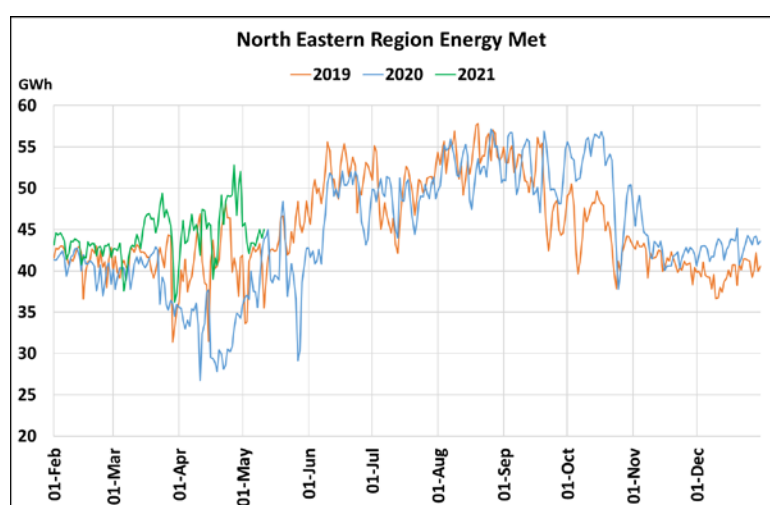
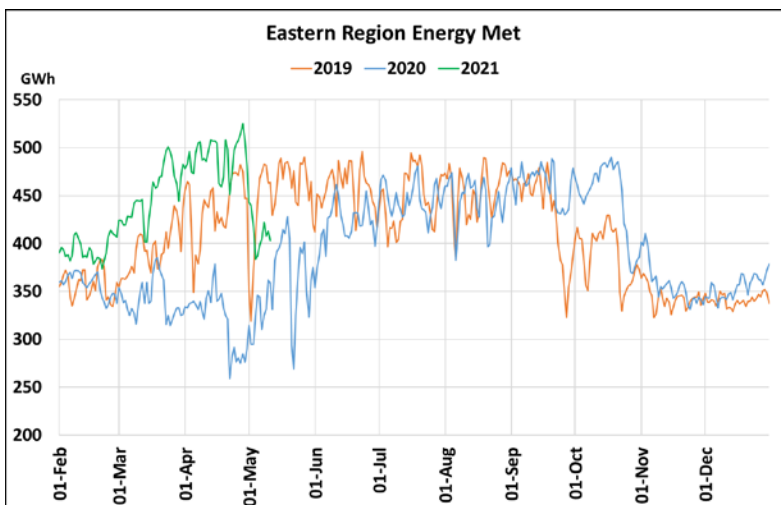
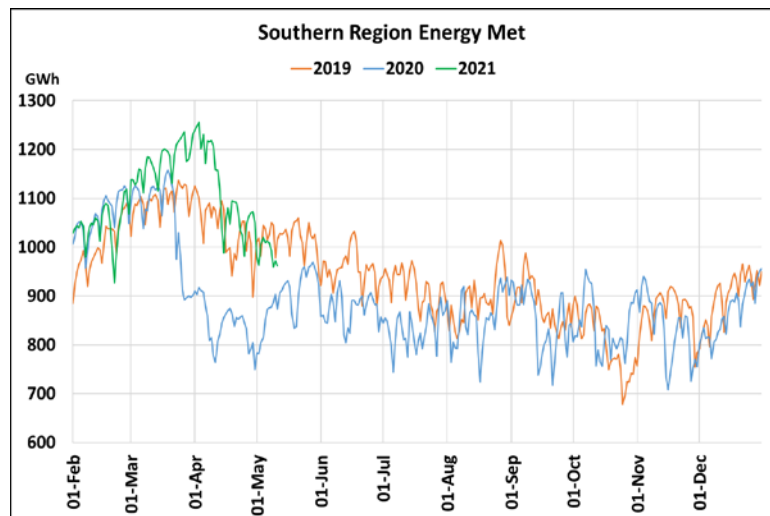
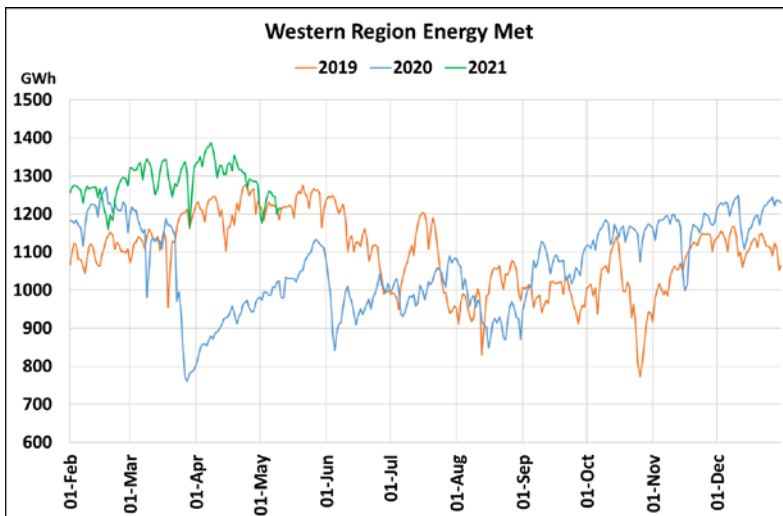
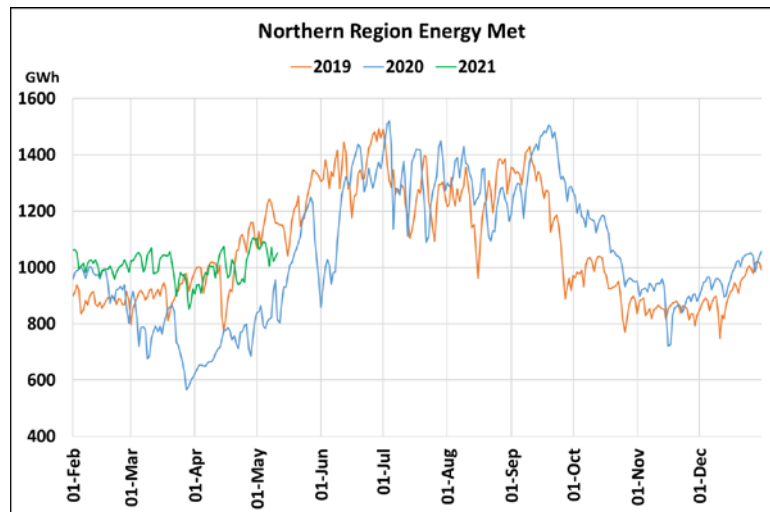
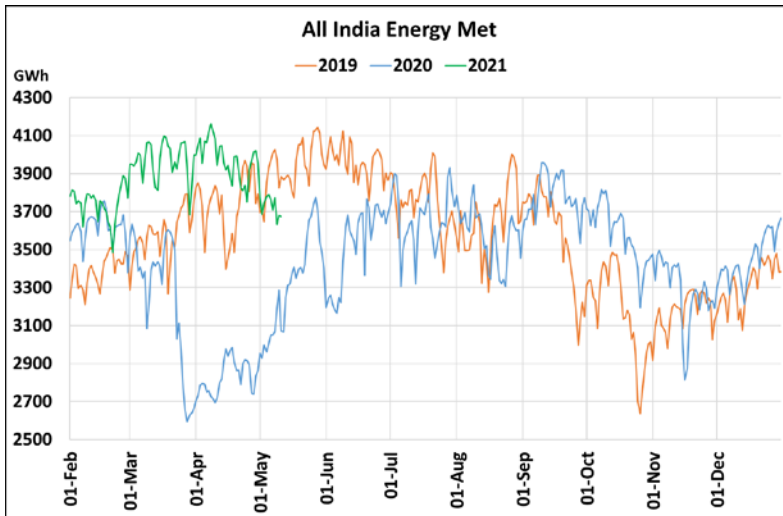


Energy Met during Management of COVID -19 in comparison to 2019

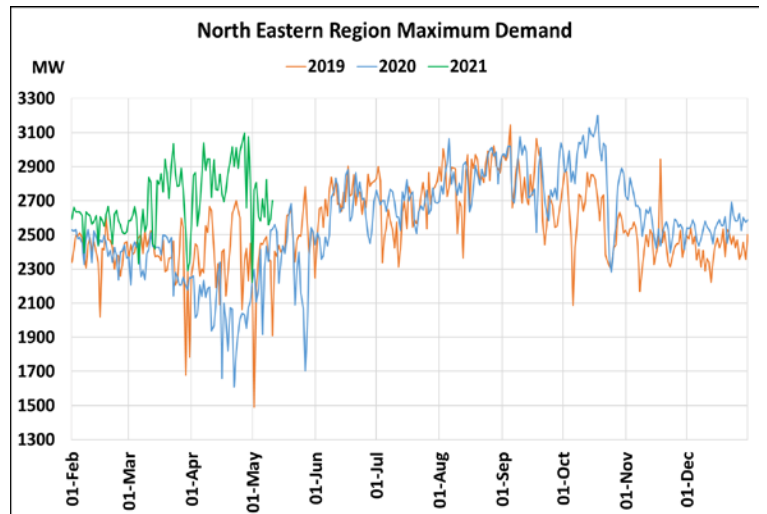
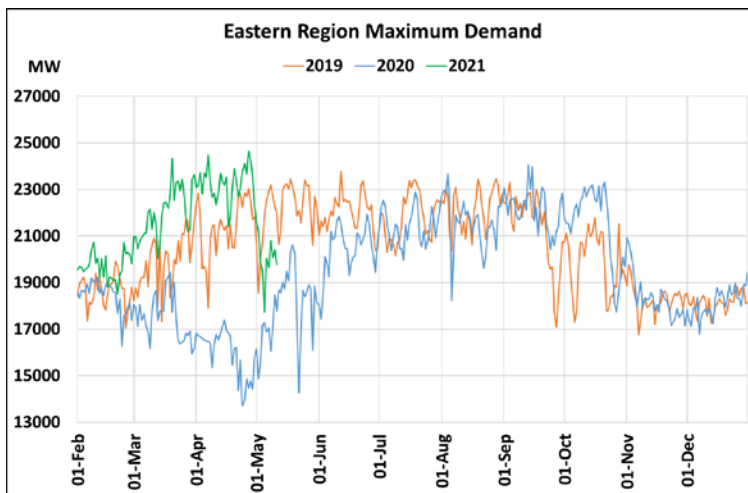
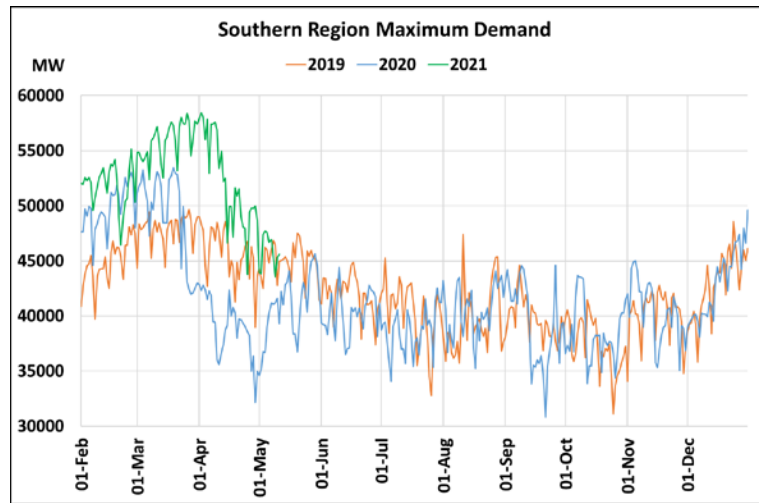
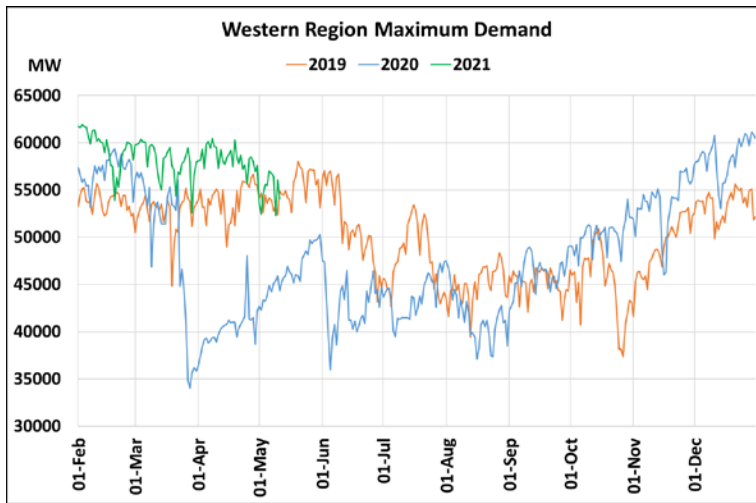
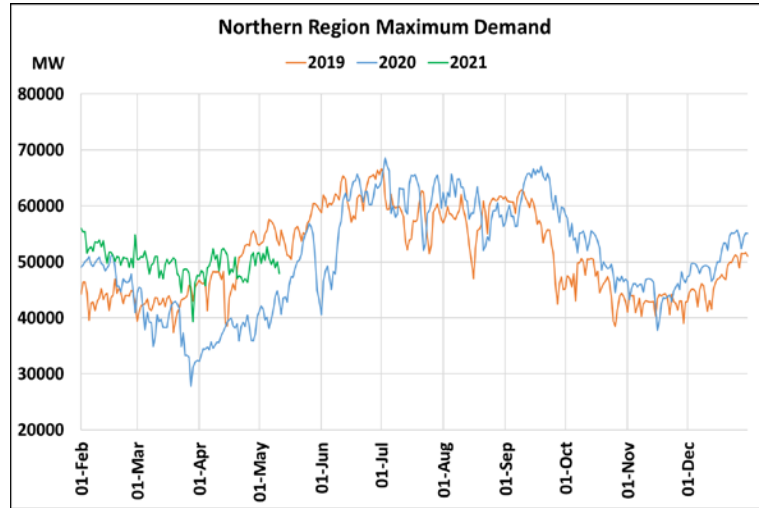
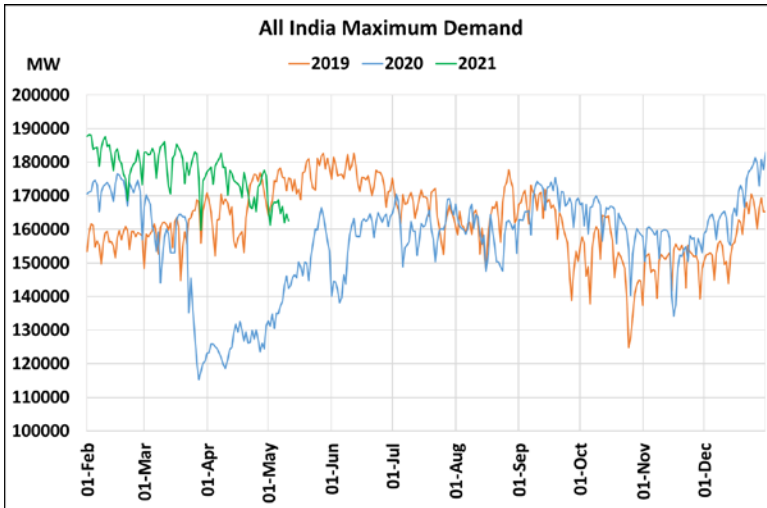


22 March 2020: Janta Curfew, 25 March – 14 April 2020: All-India containment measures, 5 April 2020: Lighting switch off event at 21:00 hrs for 9 minutes, 14 April – 31 May 2020: Extension of all-India containment measures
2021: Local lock down and containment zone in different part of the country.

**Power System Operation Corporation Limited
National Load Despatch Centre, New Delhi**

12th May 2021

Maximum Demand during Management of COVID -19 in comparison to 2019



22 March 2020: Janta Curfew, 25 March – 14 April 2020: All-India containment measures, 5 April 2020: Lighting switch off event at 21:00 hrs for 9 minutes, 14 April – 31 May 2020: Extension of all-India containment measures
2021: Local lock down and containment zone in different part of the country.