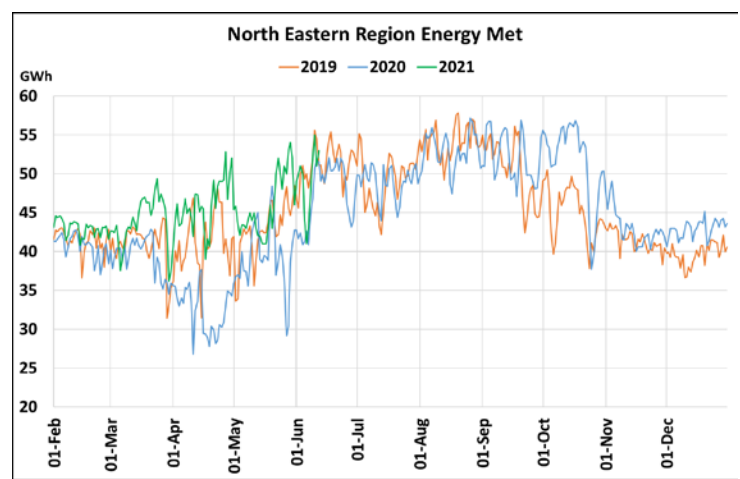
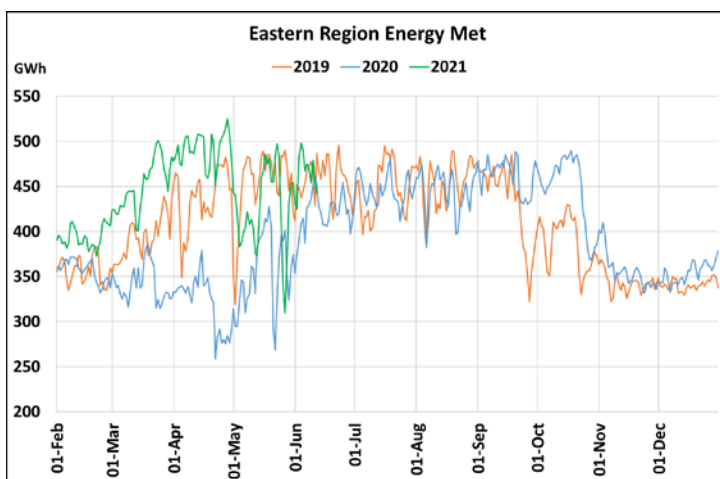
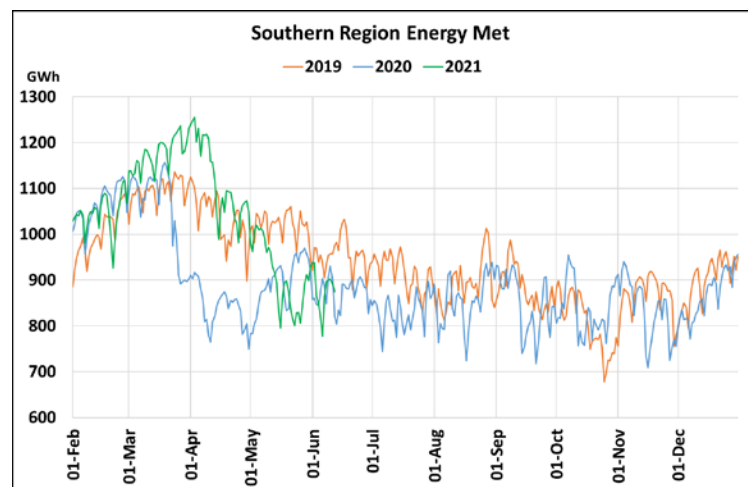
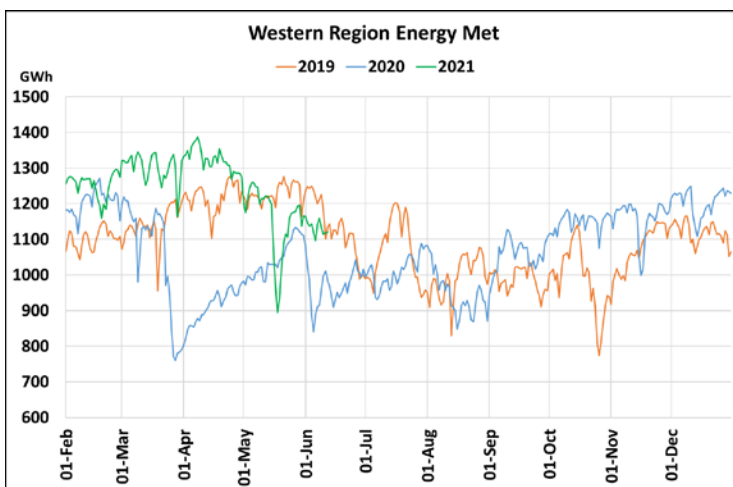
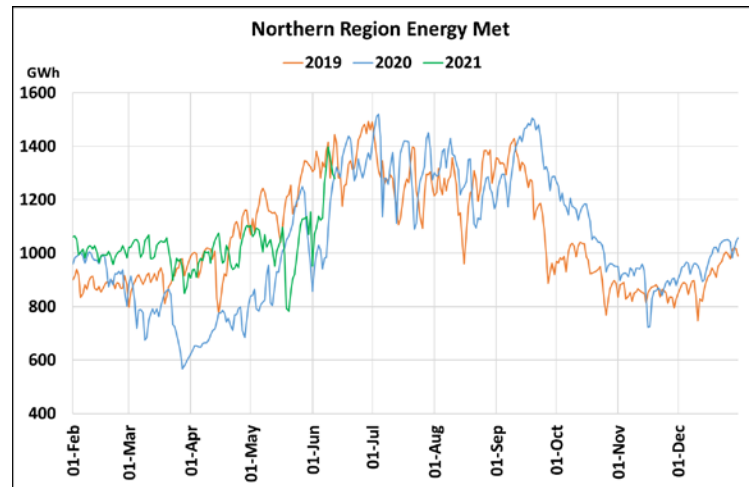
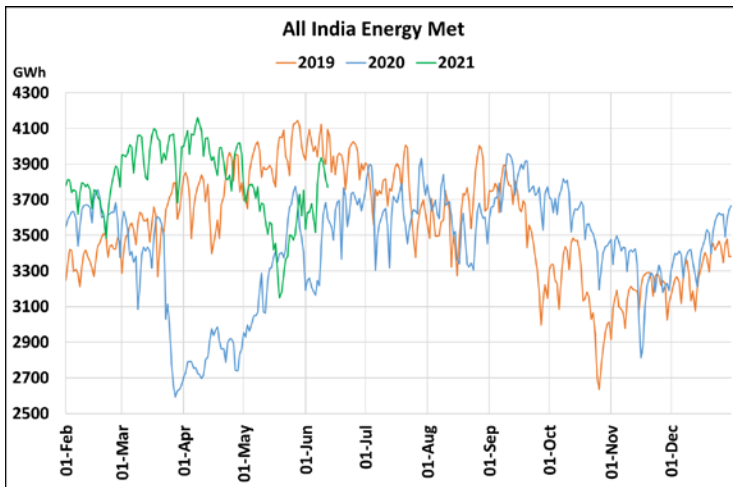


Energy Met during Management of COVID -19 in comparison to year 2019

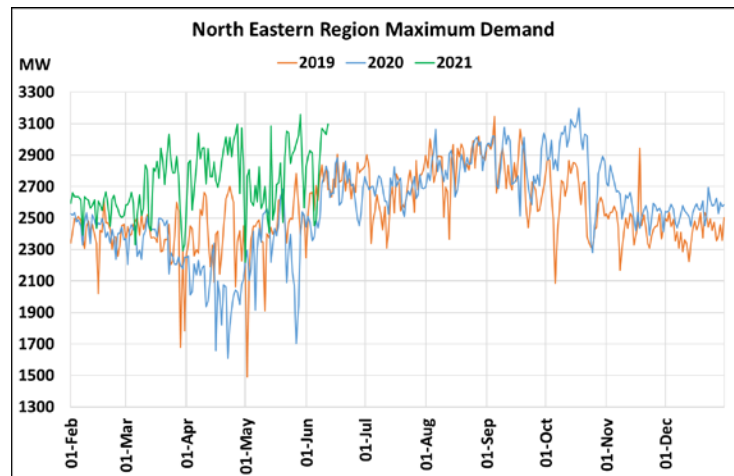
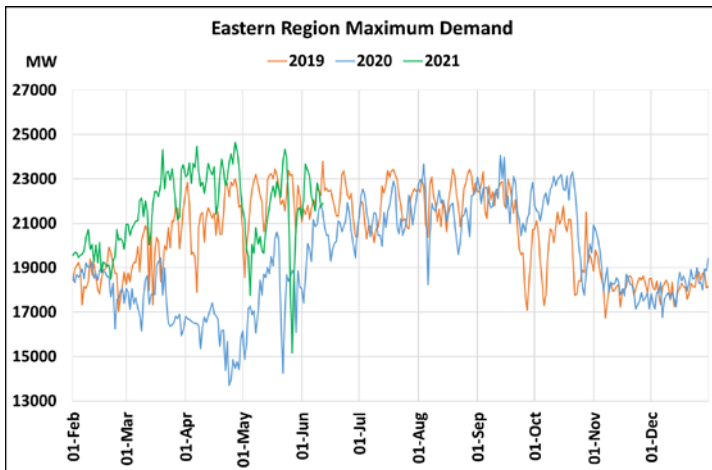
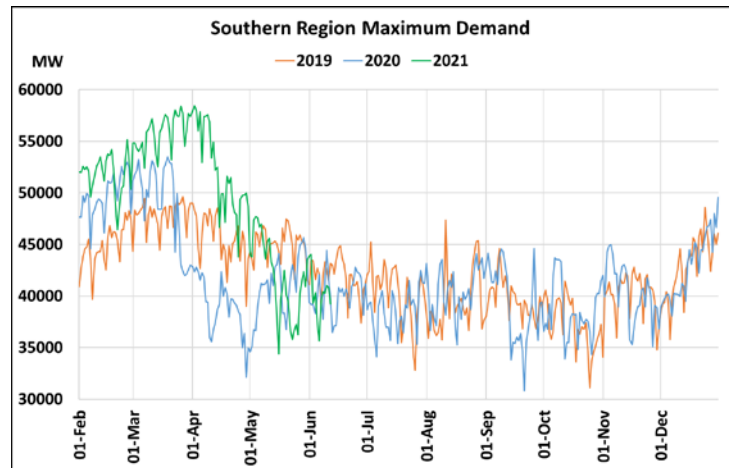
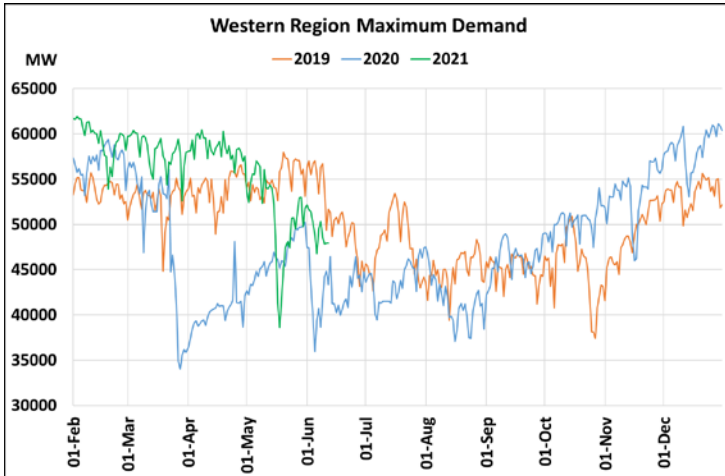
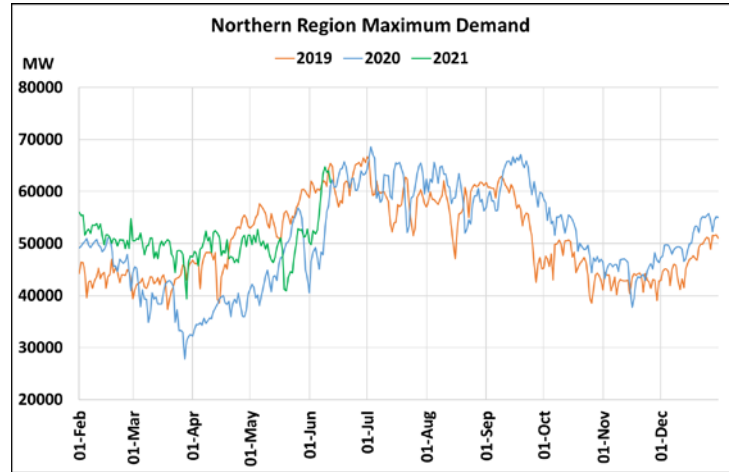
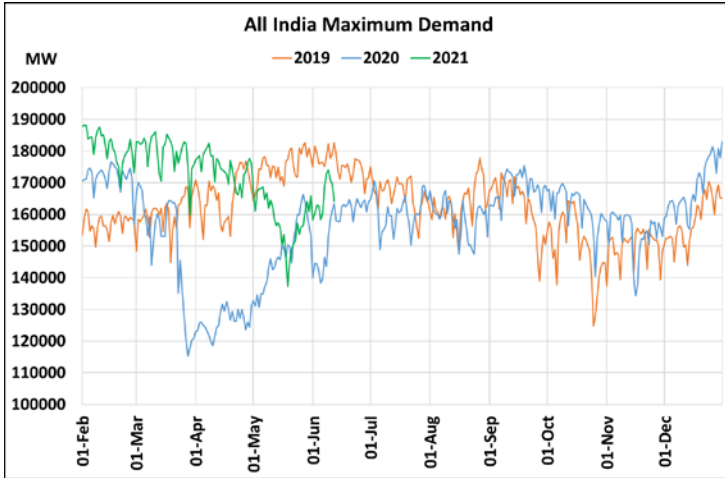


22 March 2020: Janta Curfew, 25 March – 14 April 2020: All-India containment measures, 5 April 2020: Lighting switch off event at 21:00 hrs for 9 minutes, 14 April – 31 May 2020: Extension of all-India containment measures
2021: Local lock down and containment zone in different part of the country since April 2021, Cyclone Tauktae from 14th May to 19th May 2021, Cyclone Yaas from 25th May to 28th May 2021.

**Power System Operation Corporation Limited
National Load Despatch Centre, New Delhi**

13th June 2021

Maximum Demand during Management of COVID -19 in comparison to year 2019



22 March 2020: *Janta Curfew*, 25 March – 14 April 2020: *All-India containment measures*, 5 April 2020: *Lighting switch off event at 21:00 hrs for 9 minutes*, 14 April – 31 May 2020: *Extension of all-India containment measures*
2021: *Local lock down and containment zone in different part of the country since April 2021*, Cyclone Tauktae from 14th May to 19th May 2021, Cyclone Yaas from 25th May to 28th May 2021.