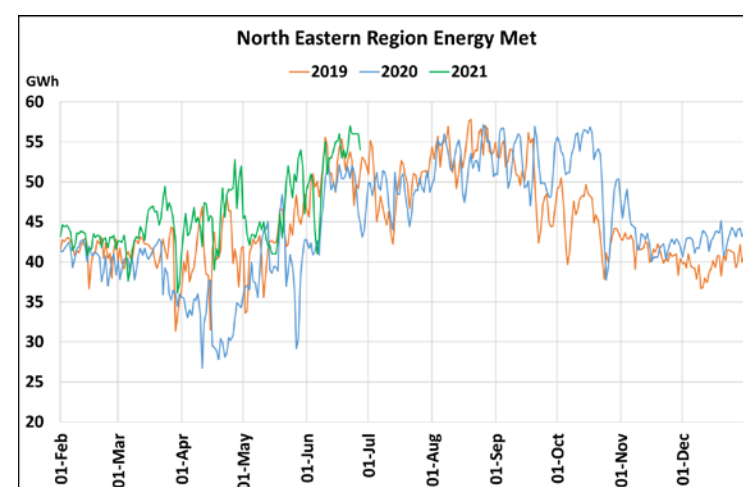
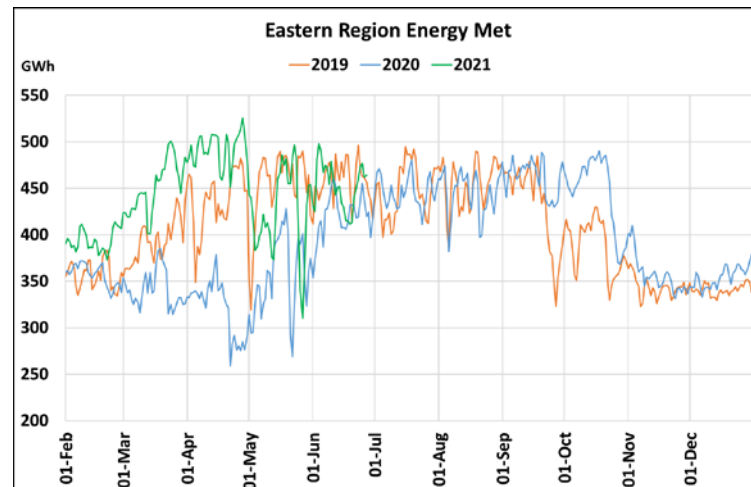
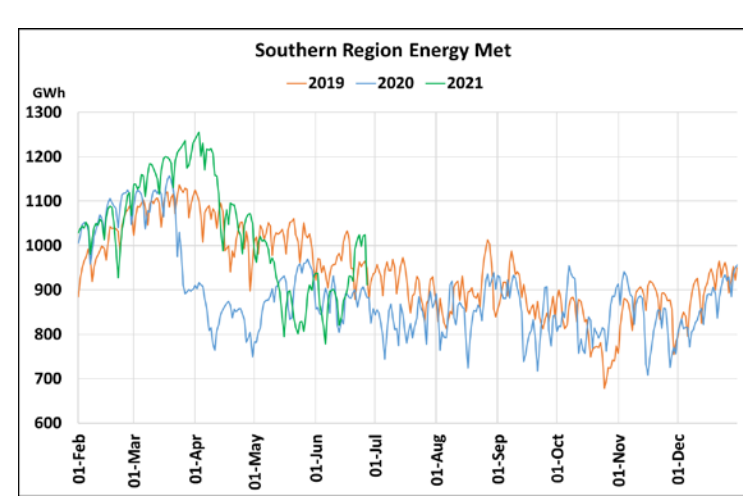
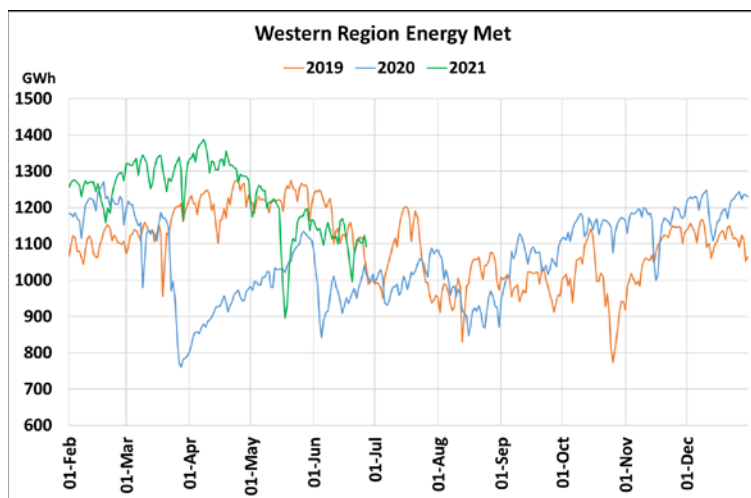
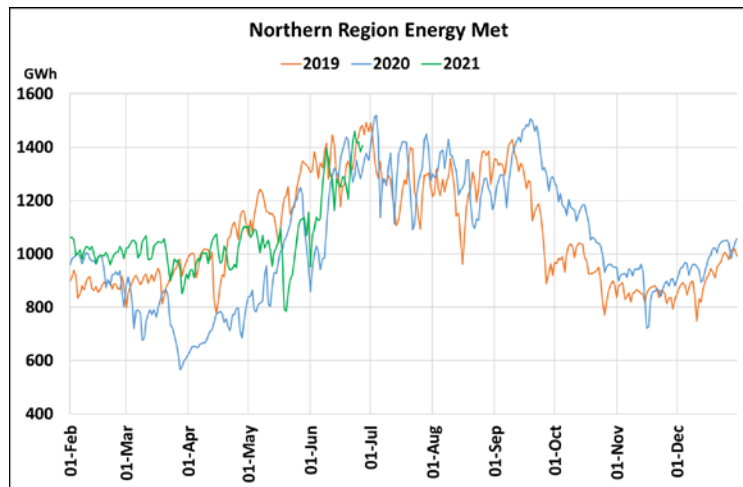
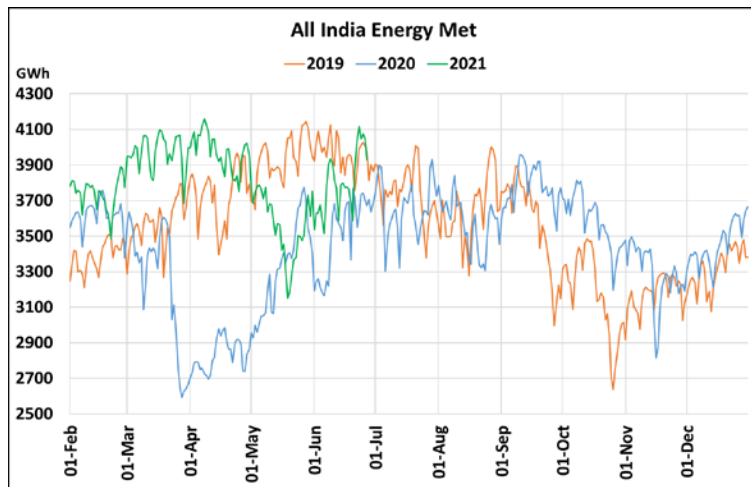


## Energy Met during Management of COVID -19 in comparison to year 2019

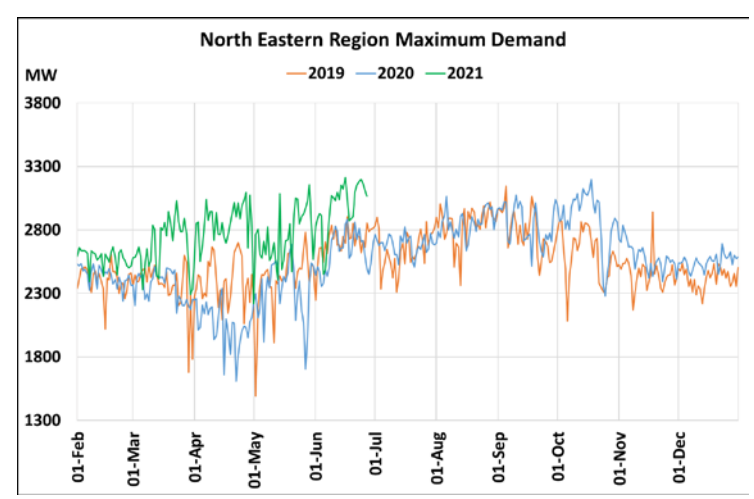
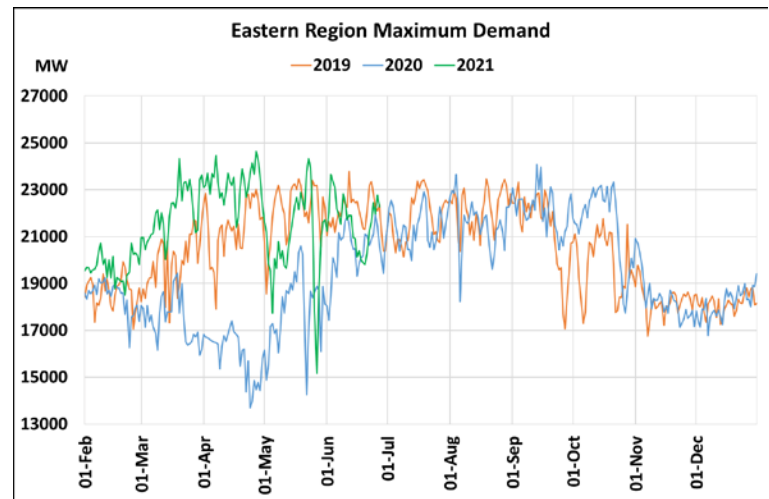
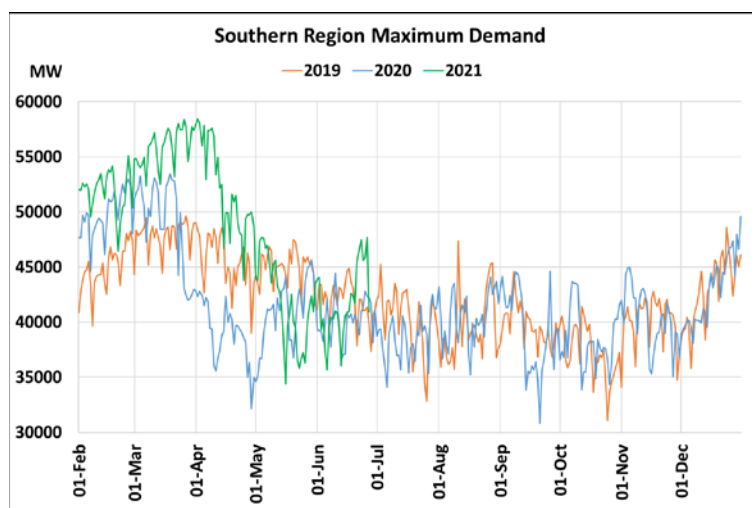
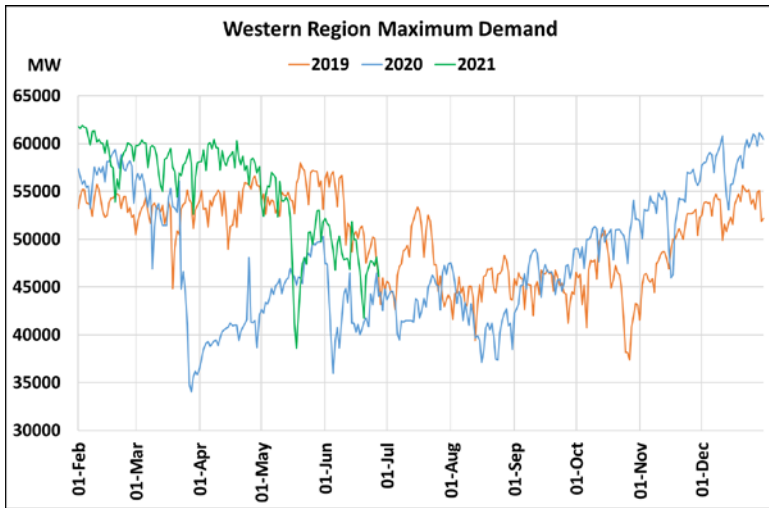
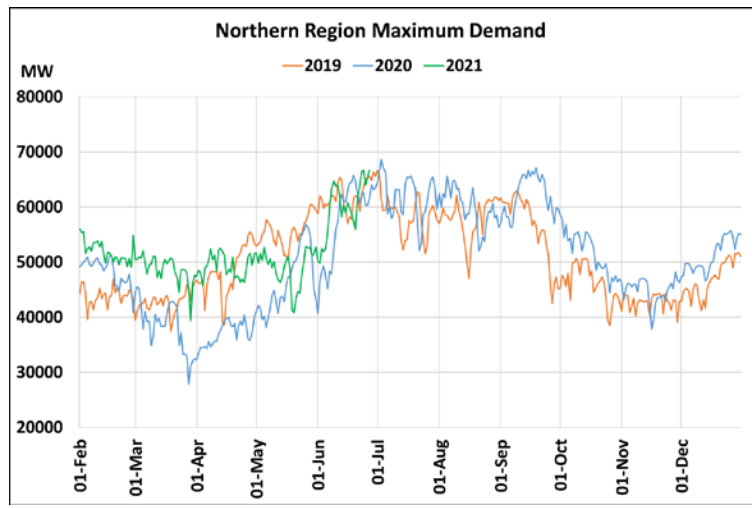
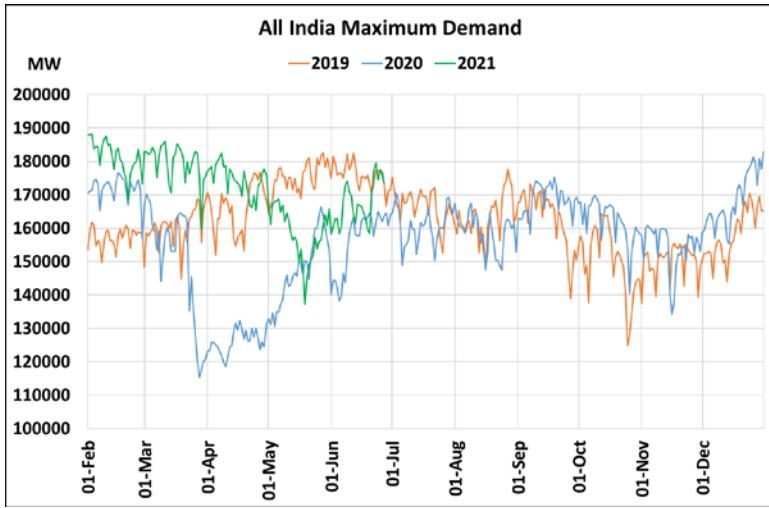


22 March 2020: Janta Curfew, 25 March – 14 April 2020: All-India containment measures, 5 April 2020: Lighting switch off event at 21:00 hrs for 9 minutes, 14 April – 31 May 2020: Extension of all-India containment measures  
2021: Local lock down and containment zone in different part of the country since April 2021, Cyclone Tauktae from 14<sup>th</sup> May to 19<sup>th</sup> May 2021, Cyclone Yaas from 25<sup>th</sup> May to 28<sup>th</sup> May 2021.

**Power System Operation Corporation Limited  
National Load Despatch Centre, New Delhi**

28<sup>th</sup> June 2021

## Maximum Demand during Management of COVID -19 in comparison to year 2019



22 March 2020: Janta Curfew, 25 March – 14 April 2020: All-India containment measures, 5 April 2020: Lighting switch off event at 21:00 hrs for 9 minutes, 14 April – 31 May 2020: Extension of all-India containment measures  
2021: Local lock down and containment zone in different part of the country since April 2021, Cyclone Tauktae from 14<sup>th</sup> May to 19<sup>th</sup> May 2021, Cyclone Yaas from 25<sup>th</sup> May to 28<sup>th</sup> May 2021.