

संदर्भ संख्या:-POSOCO/NLDC/GM/

दिनांक: 25.05.2012

सेवा में,

वितरण सूची के अनुसार

विषय:- निष्पादन रिपोर्ट - अप्रैल 2012

महोदय,

आई०ई०जी०सी०-2010 के प्रावधान के अनुसार, - अप्रैल 2012 माह की अखिल भारतीय प्रणाली की निष्पादन रिपोर्ट

धन्यवाद

भवदीय

(अवधेश मणि)
अपर महाप्रबंधक
(रा०भा०प्रे०के०)

संलग्नक: मासिक प्रणाली रिपोर्ट

Distribution List

1. Secretary ,CERC, 3rd & 4th Floor , Chanderlok Building,36,Janpath,New Delhi-110001
2. Chief Engineer(GM),CEA,Sewa Bhavan, R.K.Puram , New Delhi-110066
3. Member Secretary ,NRPC,18/A,SJSS Marg, Katwaria Sarai,New Delhi-110016
4. Member Secretary ,WRPC,F-3,MIDC Area,Andheri (East),Mumbai-400093
5. Member Secretary,SRPC,29,Race Course Cross Road,Bangalore-560009
6. Member Secretary,ERPC,14,Golf Club Road , Kolkata-7000033
7. Member Secretary,NERPC,Meghalaya State Housing Finance Cooperative Society Ltd.
Building,Nongrim Hills , Shillong -793003
8. General Manager , ERLDC,14, Golf Club Road , Kolkata-7000033
9. General Manager, WRLDC,F-3,MIDC Area,Andheri (East),Mumbai-400093
10. General Manager, NRLDC,18/A,SJSS Marg, Katwaria Sarai,New Delhi-110016
11. General Manager , SRLDC, 29,Race Course Cross Road,Bangalore-560009
12. AGM,NERLDC,Dongtiah,Lower Nongrah,Laplang,Shillong-793006

POWER SYSTEM OPERATION CORPORATION LTD
NATIONAL LOAD DESPATCH CENTRE



OPERATIONAL PERFORMANCE REPORT FOR THE
MONTH OF APRIL 2012

CONTENTS

1. SUMMARY OF REPORT FOR THE MONTH OF APRIL 2012
2. REGION WISE INSTALLED CAPACITY
3. PEAK DEMAND MET AT NATIONAL LEVEL
4. ENERGY CONSUMPTION AT NATIONAL LEVEL
5. FREQUENCY PROFILE
6. HYDRO GENERATION AT NATIONAL LEVEL
7. WIND GENERATION AT NATIONAL LEVEL
8. PEAK DEMAND & ENERGY MET AT REGIONAL LEVEL
9. SCHEDULE & DRAWAL AT REGIONAL LEVEL
10. INTER-REGIONAL EXCHANGES
11. BILATERAL SHORT-TERM OPEN ACCESS & UI DETAILS
12. POWER MARKET INFORMATION
13. IMPORTANT EVENTS/DISTURBANCES
14. IMPORTANT ELEMENTS COMMISSIONED
15. VOLTAGE PROFILE

SUMMARY OF REPORT FOR THE MONTH OF APR 2012

- During the month of Apr 2012, the overall system was running normal to the large extent except few events / incidents. The maximum of all India peak demand met was 115880 MW (on 09-04-12) which is 6.48% more as compared to last year Apr month demand (108823 MW) and 0.18% more as compared to March 2012 demand (115670 MW).
- For 93.68% of time, the NEW grid frequency was in the IEGC band (49.5 – 50.2) against 95.18% of the time in the last month (March 2012). For SR Grid, the frequency remained within the IEGC band for 91.28% against 91.75% of the time in the last month (March 2012).
- All India energy consumption was 74515 MUs at the average of 2484 MUs/day which is 0.12% less than that of last month (March 2012) average energy consumption (77105 MUs, Average 2487 MUs/day) and 5.47% more than the last year April month average energy consumption (70637 MUs, Average 2355 MUs/day).
- There was around 6% decrement in average all India Hydro generation compared to last year & 0.35% decrement compared to last month.
- Regarding wind generation, there was around 12.12% increment in average all India wind generation compared to last month. April 2012 average wind generation was 37 MUs/day against 33 MUs/day in March 2012.

**ALL INDIA REGIONWISE INSTALLED CAPACITY (MW) AS ON
30-04-2012**

SL. NO.	REGION	THERMAL				Nuclear	HYDRO (Renewable)	R.E.S. @ (MNRE)	TOTAL
		COAL	GAS	DSL	TOTAL				
1	Northern	29017.50	4421.26	12.99	33451.75	1620.00	15122.75	4391.40	54585.90
2	Western	39424.50	8254.81	17.48	47696.79	1840.00	7447.50	7909.95	64894.24
3	Southern	22882.50	4690.78	939.32	28512.60	1320.00	11338.03	11569.30	52739.93
4	Eastern	22397.88	190.00	17.20	22605.08	0.00	3882.12	398.71	26885.91
5	N. Eastern	60.00	824.20	142.74	1026.94	0.00	1200.00	228.00	2454.94
6	Islands	0.00	0.00	70.02	70.02	0.00	0.00	6.10	76.12
7	All India	113782.38	18381.05	1199.75	133363.18	4780.00	38990.40	24503.45	201637.03

Source-CEA

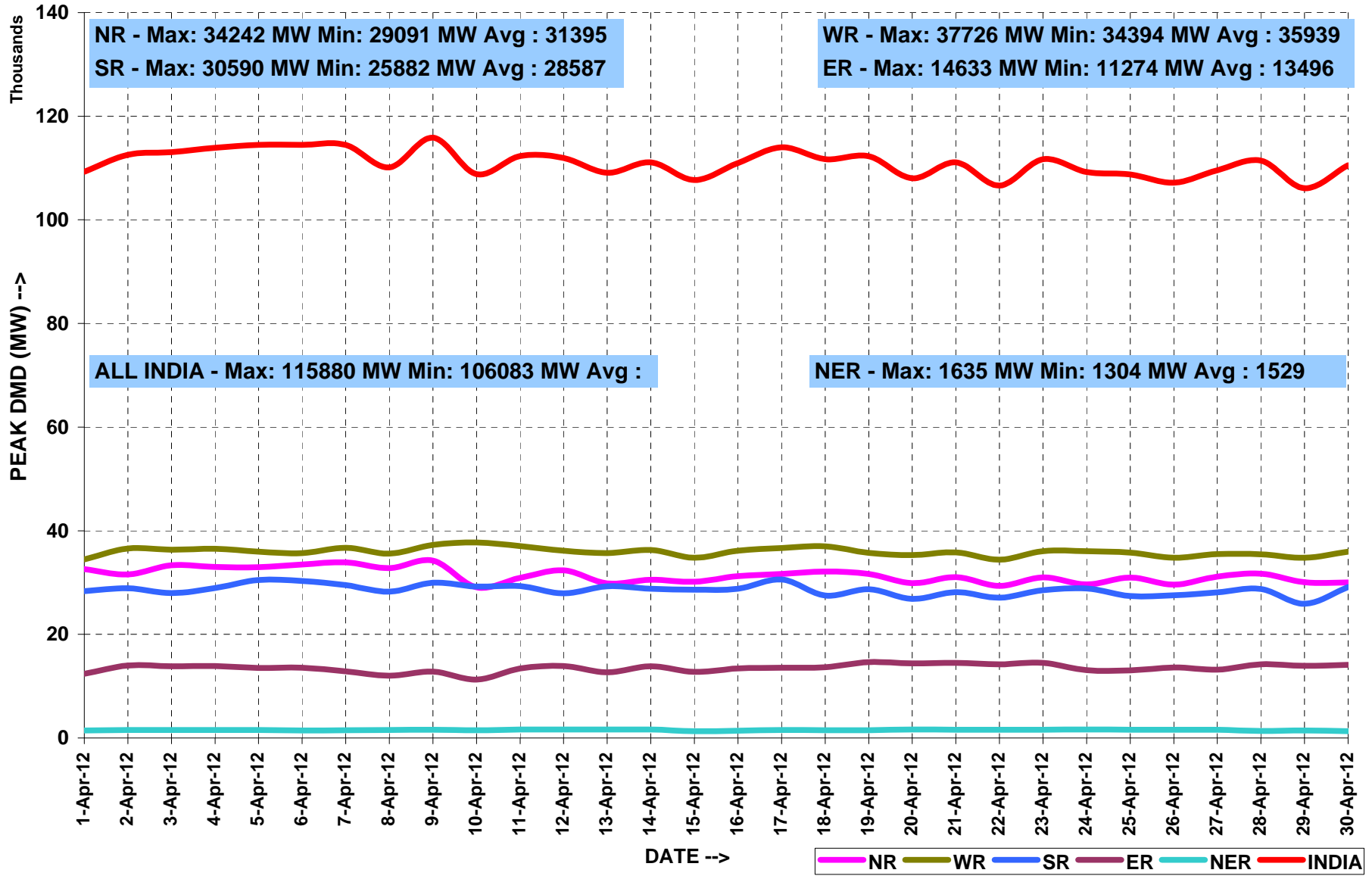
PEAK DEMAND MET AT NATIONAL LEVEL

MONTH:- APRIL 2012

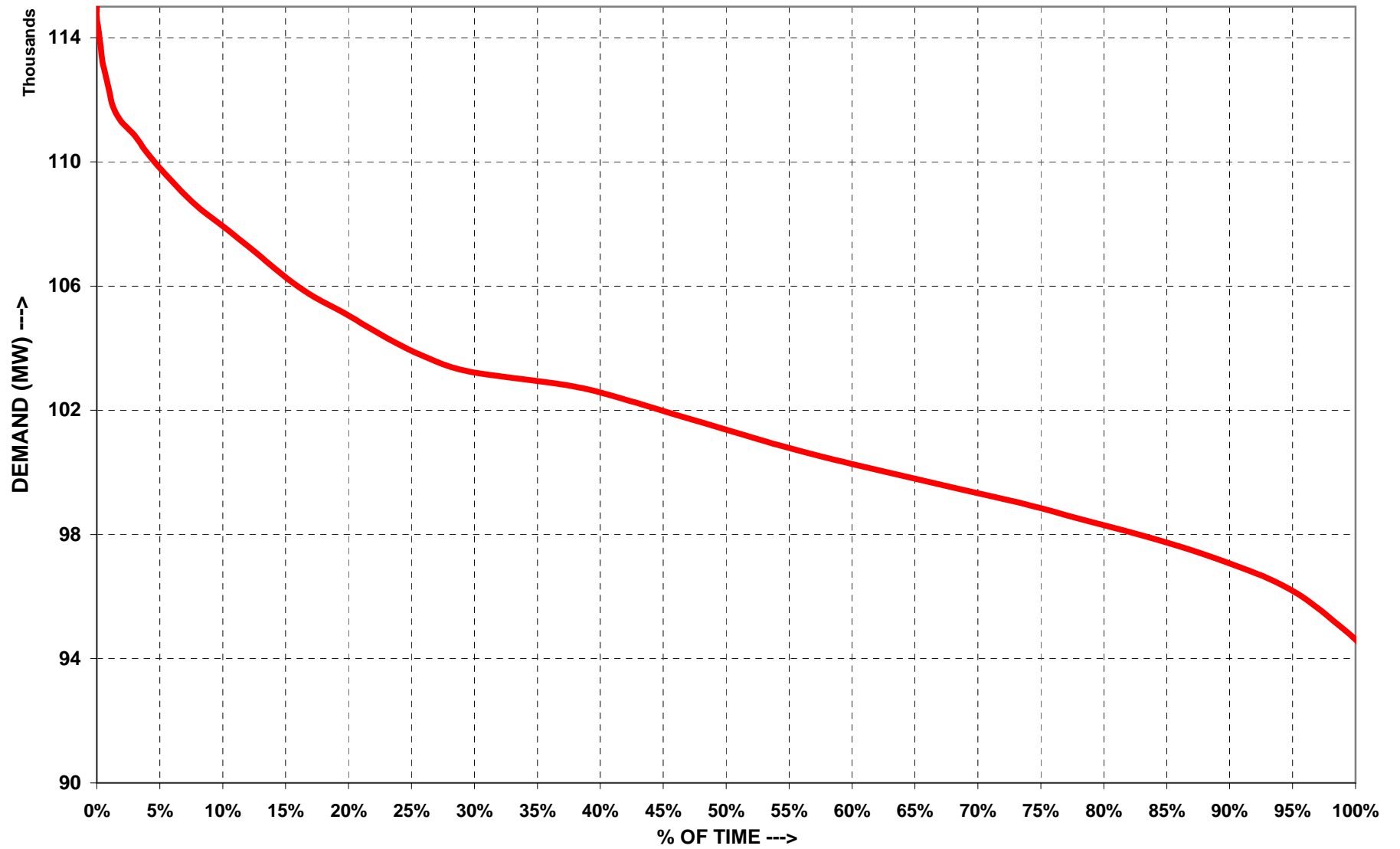
All figures in MW

Date	NR	WR	SR	ER	NER	TOTAL
4/1/2012	32607	34443	28350	12405	1458	109263
4/2/2012	31560	36568	28913	13992	1539	112572
4/3/2012	33345	36355	27958	13857	1549	113064
4/4/2012	33026	36530	28956	13886	1530	113928
4/5/2012	32982	35964	30468	13510	1532	114456
4/6/2012	33484	35666	30284	13575	1461	114470
4/7/2012	33900	36699	29522	12853	1480	114454
4/8/2012	32764	35605	28230	11994	1538	110131
4/9/2012	34242	37255	29979	12823	1581	115880
4/10/2012	29091	37726	29216	11274	1506	108813
4/11/2012	30927	37014	29332	13432	1624	112329
4/12/2012	32349	36162	27906	13892	1635	111944
4/13/2012	29817	35693	29286	12695	1615	109106
4/14/2012	30515	36291	28819	13861	1629	111115
4/15/2012	30182	34811	28596	12758	1326	107673
4/16/2012	31243	36138	28782	13403	1409	110975
4/17/2012	31666	36647	30590	13583	1528	114014
4/18/2012	32112	36976	27484	13652	1483	111707
4/19/2012	31663	35723	28730	14633	1504	112253
4/20/2012	29864	35318	26825	14379	1614	108000
4/21/2012	31051	35805	28166	14501	1579	111102
4/22/2012	29369	34394	27059	14193	1608	106623
4/23/2012	31014	36062	28528	14500	1603	111707
4/24/2012	29631	36062	28859	13074	1620	109246
4/25/2012	30938	35773	27393	13059	1602	108765
4/26/2012	29603	34812	27546	13618	1591	107170
4/27/2012	31131	35511	28100	13205	1605	109552
4/28/2012	31692	35428	28751	14201	1365	111437
4/29/2012	30065	34775	25882	13919	1442	106083
4/30/2012	30009	35959	29110	14140	1304	110522
MAXIMUM	34242	37726	30590	14633	1635	115880
MINIMUM	29091	34394	25882	11274	1304	106083
AVERAGE	31395	35939	28587	13496	1529	110945

PEAK DEMANDS MET DURING THE MONTH OF APRIL' 2012



ALL INDIA LOAD DURATION CURVE FOR APRIL' 2012



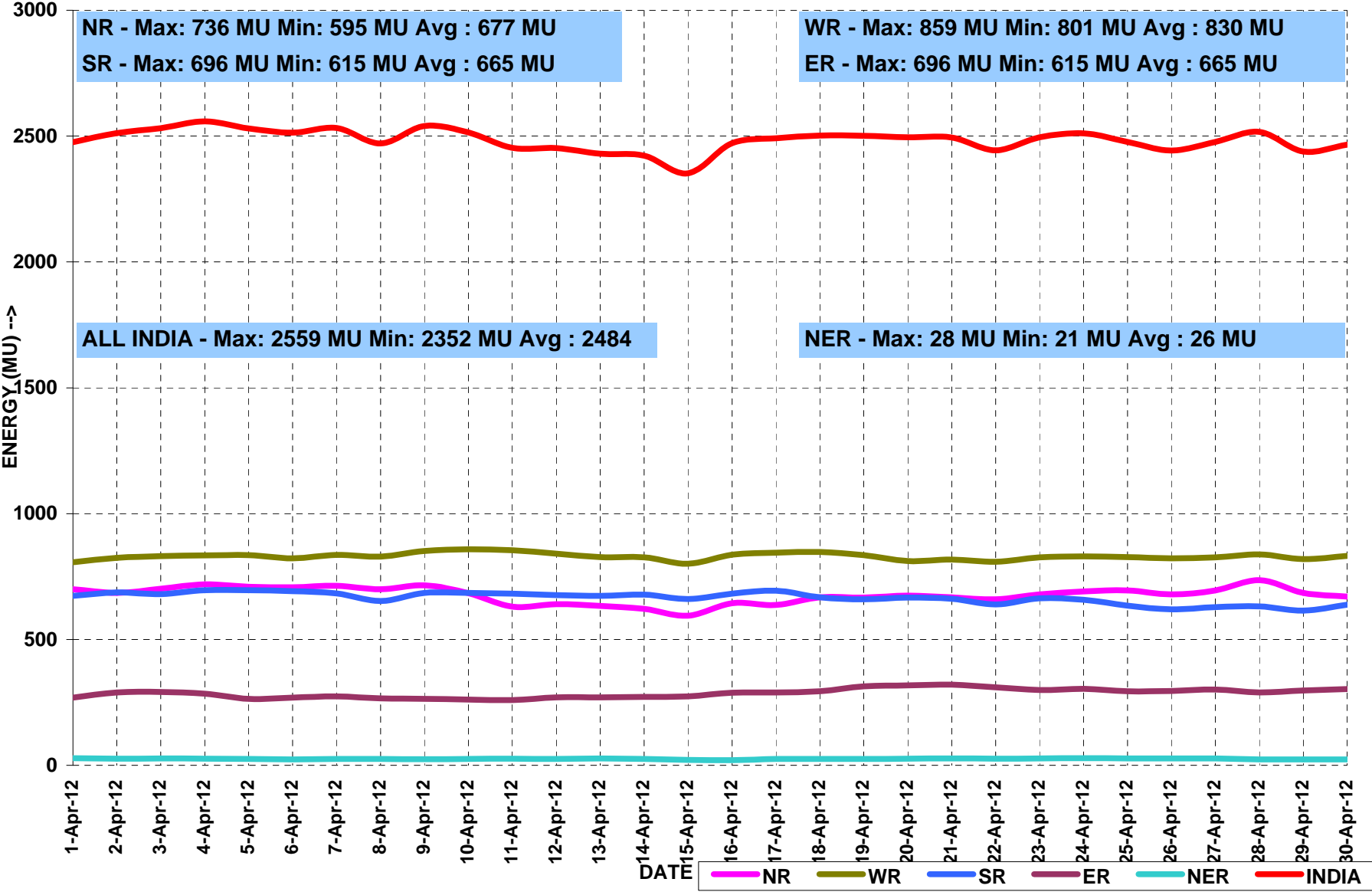
ENERGY MET AT NATIONAL LEVEL

MONTH:- APRIL 2012

All figures in MU

Date	NR	WR	SR	ER	NER	TOTAL
4/1/2012	699	807	673	269	28	2476
4/2/2012	685	824	687	289	27	2512
4/3/2012	702	831	680	291	27	2532
4/4/2012	719	834	695	284	26	2559
4/5/2012	710	835	696	265	25	2530
4/6/2012	708	822	692	269	23	2514
4/7/2012	713	836	684	274	25	2532
4/8/2012	699	829	652	266	25	2471
4/9/2012	715	852	685	264	24	2540
4/10/2012	684	859	685	261	25	2515
4/11/2012	630	855	682	259	27	2453
4/12/2012	640	841	676	270	26	2453
4/13/2012	633	827	673	270	27	2430
4/14/2012	621	826	678	272	26	2422
4/15/2012	595	801	661	274	22	2352
4/16/2012	644	837	682	288	21	2471
4/17/2012	638	845	694	289	26	2491
4/18/2012	667	848	667	295	26	2502
4/19/2012	667	835	660	314	26	2501
4/20/2012	675	811	666	317	26	2495
4/21/2012	667	818	662	321	27	2495
4/22/2012	659	809	639	310	27	2444
4/23/2012	679	826	664	299	27	2495
4/24/2012	691	830	658	304	28	2511
4/25/2012	695	827	634	294	27	2477
4/26/2012	679	822	620	295	27	2443
4/27/2012	695	826	628	301	27	2477
4/28/2012	736	838	631	289	23	2517
4/29/2012	685	819	615	297	23	2439
4/30/2012	670	832	638	303	23	2466
TOTAL	20300	24900	19956	8593	766	74515
MAXIMUM	736	859	696	321	28	2559
MINIMUM	595	801	615	259	21	2352
AVERAGE	677	830	665	286	26	2484

ENERGY MET DURING THE MONTH OF APRIL' 2012

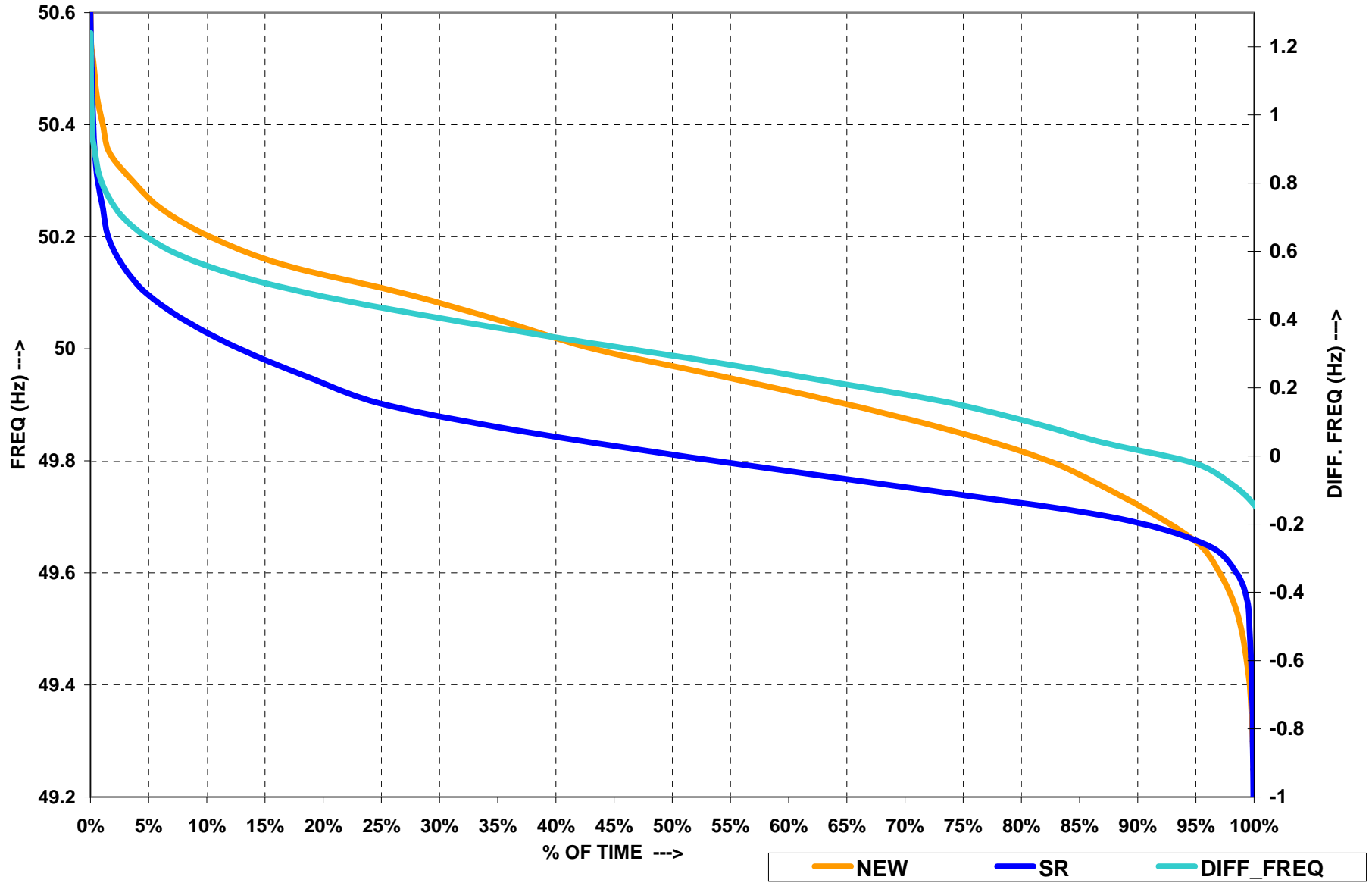


FREQUENCY PROFILE FOR THE MONTH OF APRIL 2012

SR GRID										
FREQUENCY PROFILE		< 48.5	48.5 - 49.5	< 49.5	49.5 - 50.2	>50.2		Max. Freq	Min. Freq	Avg. Freq
% TIME	Apr-12	0.00	7.79	7.79	91.28	0.93		50.66	48.66	49.69

NEW GRID										
FREQUENCY PROFILE		< 48.5	48.5 - 49.5	< 49.5	49.5 - 50.2	>50.2		Max. Freq	Min. Freq	Avg. Freq
% TIME	Apr-12	0.00	2.38	2.38	93.68	3.94		50.66	49.08	49.9

FREQUENCY DURATION CURVES FOR APRIL' 2012



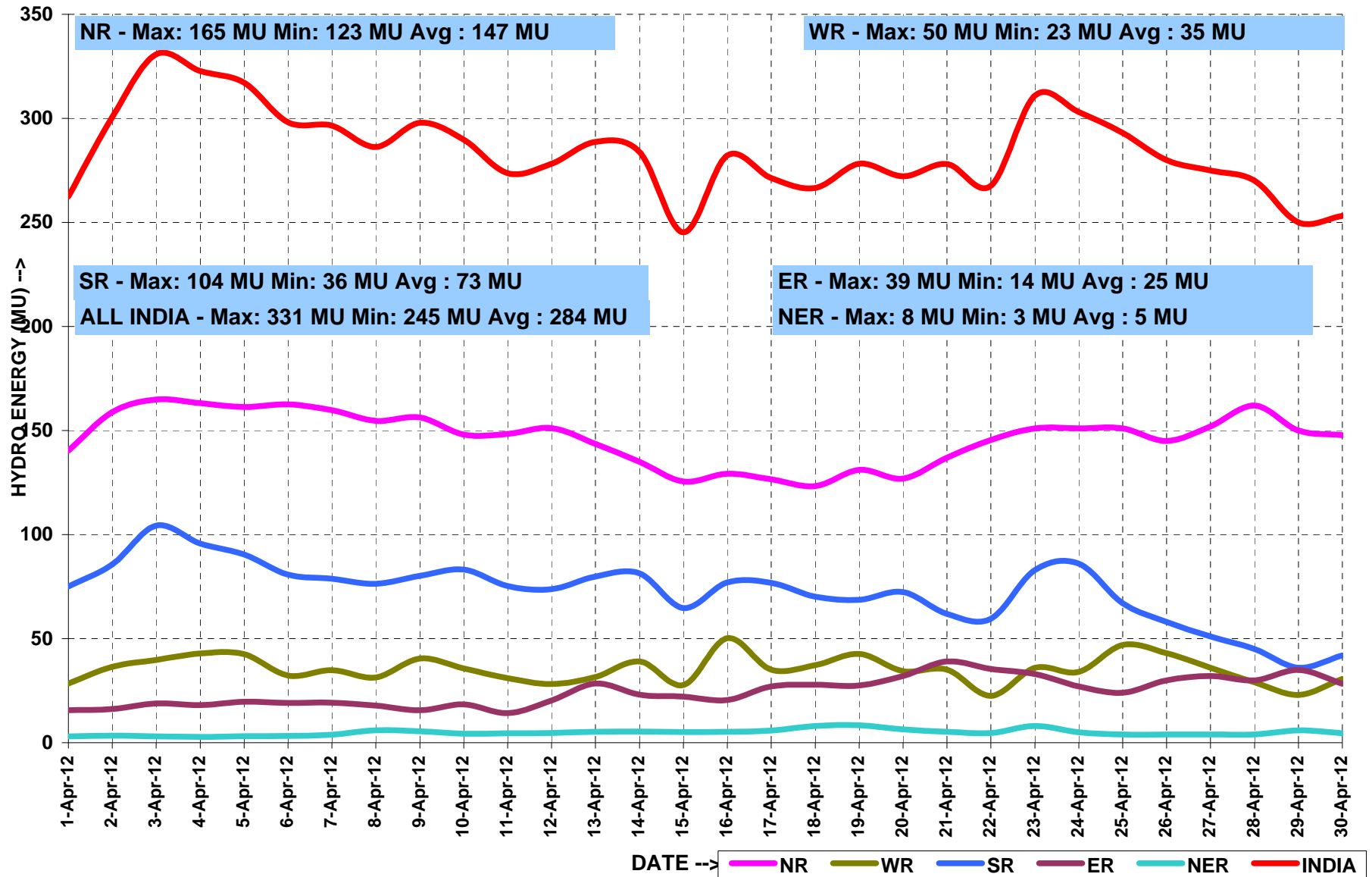
HYDRO GENERATION AT NATIONAL LEVEL

MONTH:- APRIL 2012

All figures in MU

Date	NR	WR	SR	ER	NER	TOTAL
4/1/2012	140	28	75	16	3	263
4/2/2012	159	36	86	16	3	301
4/3/2012	165	40	104	19	3	331
4/4/2012	163	43	96	18	3	323
4/5/2012	161	43	90	20	3	317
4/6/2012	163	32	81	19	3	298
4/7/2012	160	35	79	19	4	297
4/8/2012	155	31	76	18	6	286
4/9/2012	156	40	80	16	6	298
4/10/2012	148	36	83	18	4	290
4/11/2012	148	31	75	14	5	274
4/12/2012	151	28	74	20	5	278
4/13/2012	144	32	80	28	5	289
4/14/2012	135	39	81	23	5	284
4/15/2012	126	28	65	22	5	245
4/16/2012	129	50	77	21	5	282
4/17/2012	127	35	77	27	6	271
4/18/2012	123	37	70	28	8	267
4/19/2012	131	43	69	28	8	278
4/20/2012	127	34	72	32	6	272
4/21/2012	137	35	62	39	5	278
4/22/2012	145	23	60	35	5	268
4/23/2012	151	36	83	33	8	311
4/24/2012	151	34	86	27	5	303
4/25/2012	151	47	67	24	4	293
4/26/2012	145	43	58	30	4	280
4/27/2012	152	36	51	32	4	275
4/28/2012	162	29	45	30	4	270
4/29/2012	150	23	36	35	6	250
4/30/2012	148	31	42	28	5	253
TOTAL	4403	1058	2180	735	146	8523
MAXIMUM	165	50	104	39	8	331
MINIMUM	123	23	36	14	3	245
AVERAGE	147	35	73	25	5	284

HYDRO ENERGY DURING THE MONTH OF APRIL' 2012



WIND GENERATION AT NATIONAL LEVEL

MONTH:- APRIL 2012

All figures in MU

Date	NR	WR	SR	ER	NER	TOTAL
4/1/2012	8	12	6	26
4/2/2012	4	10	4	18
4/3/2012	5	14	5	24
4/4/2012	5	21	12	38
4/5/2012	3	25	18	46
4/6/2012	5	25	16	46
4/7/2012	2	16	8	25
4/8/2012	5	13	15	26
4/9/2012	7	18	9	39
4/10/2012	7	21	9	37
4/11/2012	7	21	8	37
4/12/2012	5	26	4	38
4/13/2012	10	21	4	36
4/14/2012	10	12	5	26
4/15/2012	1	12	7	18
4/16/2012	10	15	22	32
4/17/2012	6	18	14	45
4/18/2012	7	19	17	40
4/19/2012	13	17	9	47
4/20/2012	12	12	7	33
4/21/2012	7	14	11	28
4/22/2012	5	23	17	40
4/23/2012	5	24	7	46
4/24/2012	3	17	7	27
4/25/2012	5	18	6	29
4/26/2012	4	20	4	28
4/27/2012	6	20	15	41
4/28/2012	15	25	26	66
4/29/2012	11	24	24	59
4/30/2012	9	29	40	78
TOTAL	202	562	356	1119
MAXIMUM	15	29	40	66
MINIMUM	1	10	4	18
AVERAGE	7	19	12	37

SCHEDULE AND DRAWAL OF CONSTITUENTS - APRIL 2012

REGION	STATE	SCHEDULE (MU)	ACTUAL DRAWAL (MU)	Over drawal(+)/ Under Drawal(-) (MU)	SCHEDULE (MU/DAY)	ACTUAL DRAWAL (MU/DAY)	Over drawal(+)/ Under Drawal(-) (MU/DAY)
NR	Chandigarh	127	124	-3	4	4	0
	Delhi	1528	1253	-275	51	42	-9
	Haryana	1008	1031	23	34	34	1
	H.P.	406	359	-47	14	12	-2
	J&K	471	527	56	16	18	2
	Punjab	1361	1357	-3	45	45	0
	Rajasthan	1026	1354	328	34	45	11
	U.P.	2474	3006	532	82	100	18
	Uttarakhand	334	494	160	11	16	5
NFF/Railway	68	70	2	2	2	0	
WR	Gujarat	1234	900	-334	41	30	-11
	Madhya Pradesh	1706	1527	-179	57	51	-6
	Maharashtra	3545	3851	306	118	128	10
	Chhattisgarh	395	415	20	13	14	1
	Goa	191	214	23	6	7	1
	D&D	167	162	-5	6	5	0
	D&NH	409	394	-15	14	13	-1
SR	APTRANSCO	1823	1941	118	61	65	4
	KPTCL	1090	1116	26	36	37	1
	KSEB	886	947	61	30	32	2
	TNEB	1881	1977	96	63	66	3
	PONDY	245	187	-58	8	6	-2
	GOA(SR)	64	61	-3	2	2	0
ER	Bihar	1119	992	-127	37	33	-4
	JSEB	286	242	-43	10	8	-1
	DVC	-416	-407	9	-14	-14	0
	GRIDCO	785	822	37	26	27	1
	Sikkim	744	661	-82	25	22	-3
	WBSEB	38	28	-9	1	1	0
NER	Arunachal Pradesh	37	52	14	1	2	0
	Assam	297	288	-8	10	10	0
	Manipur	31	29	-2	1	1	0
	MeSEB	55	75	20	2	3	1
	Mizoram	21	27	5	1	1	0
	Nagaland	26	39	13	1	1	0
	Tripura	23	12	-11	1	0	0

ACTUAL POWER SUPPLY POSITION - MAR 2012

REGION	STATE	Requirement/Availability in MU/DAY			Requirement/Availability in MU				Peak Demand/Peak Met in MW			
		Requirement	Energy met	Surplus(+)/ Deficit(-)	Requirement	Energy met	Surplus(+)/ Deficit(-)	% Shortage	Requirement	Peak Demand	Surplus(+)/ Deficit(-)	% Shortage
NR	Chandigarh	4	4	0	124	124	0	0	215	215	0	0
	Delhi	70	70	0	2114	2113	-1	0	3779	3779	0	0
	Haryana	93	88	-5	2789	2648	-142	5	5271	5110	-161	3
	H.P.	23	22	0	679	672	-7	1	1198	1198	0	0
	J&K	40	30	-10	1195	896	-299	25	2125	1593	-532	25
	Punjab	101	99	-3	3043	2959	-84	3	6391	4569	-1822	29
	Rajasthan	135	135	-1	4063	4043	-20	0	7143	7112	-31	0
	U.P.	234	212	-23	7035	6355	-680	10	13005	11465	-1540	12
	Uttarakhand	29	27	-2	882	824	-58	7	1467	1237	-230	16
	NFF/Railway	2	2	0	70	70	0	0	103	103	0	0
	TOTAL	733	690	-43	21993	20702	-1291	6	37103	34242	-2861	8
WR	Gujarat	246	245	-1	7373	7342	-31	0	11385	11361	-24	0
	Madhya Pradesh	137	118	-18	4099	3551	-548	-13	8400	6939	-1461	-17
	Chhattisgarh	72	71	-1	2153	2128	-25	-1	3457	3320	-137	-4
	Maharashtra	385	370	-16	11564	11091	-473	-4	18437	17268	-1169	-6
	Goa	8	8	0	240	232	-8	-3	426	386	-40	-9
	D&D	6	5	-1	182	162	-20	-11	265	235	-30	-11
	DNH	13	13	0	397	394	-3	-1	565	564	-1	0
	TOTAL	897	823	-75	26924	24675	-2249	-8	39757	37961	-1796	-5
SR	AP-TRANSCO	283	246	-37	8493	7377	-1116	-13	13042	11335	-1707	-13
	KPTCL	182	159	-23	5455	4777	-678	-12	9940	8264	-1676	-17
	KSEB	59	56	-3	1757	1677	-80	-5	3256	3071	-185	-6
	TNEB	257	198	-59	7707	5940	-1767	-23	11661	10078	-1583	-14
	PONDY	6	6	0	187	185	-2	-1	314	313	-1	0
	TOTAL	787	665	-121	23599	19955	-3644	-15	37035	31936	-5099	-14
ER	Bihar	39	33	-6	1155	988	-167	-14	2500	1703	-797	-32
	JSEB	20	18	-2	590	528	-62	-11	1090	947	-143	-13
	GRIDCO	49	52	4	1455	1564	109	7	2425	2374	-51	-2
	DVC	68	64	-4	2030	1915	-115	-6	3470	3251	-219	-6
	West Bengal	128	127	-1	3842	3813	-29	-1	6726	7063	337	5
	TOTAL	302	294	-9	9072	8808	-264	-3	15845	14621	-1224	-8
NER	Arunachal Pradesh	2	2	0	51	47	-3	0	106	103	-3	0
	Assam	16	15	-1	484	451	-33	0	1053	1019	-34	0
	Manipur	1	1	0	33	30	-3	0	105	104	-2	0
	MeSEB	5	4	-1	146	105	-41	0	275	269	-6	0
	Mizoram	1	1	0	28	26	-2	0	65	60	-5	0
	Nagaland	1	1	0	34	31	-3	0	100	98	-2	0
	Tripura	3	2	0	79	74	-6	0	180	177	-3	0
	TOTAL	29	25	-3	855	764	-92	0	1884	1830	-54	0

Inter-Regional Exchanges (2011-2012)

All figs. in MUs
ALL FIGURES ARE IN MUs

		Apr-12	May-12	Jun-12	Jul-12	Aug-12	Sep-12	Oct-12	Nov-12	Dec-12	Jan-13	Feb-13	Mar-13	Total FINANCIAL YEAR 2012-13 (Till April'12)
*	WR-NR	HVDC Vindhyachal B/B	22.31											22.31
		220KV Aur.-Mal.	0.33											0.33
		220KV Kota/Morak-Badod	6.94											6.94
		400KV Agra-Gwalior	460.85											460.85
		400KV Kankroli-Jerda	4.20											4.20
		400KV Bhinmal-Jerda	3.30											3.30
		400KV Barh - Balia	114.24											114.24
*	ER-NR	HVDC Sasaram B/B (Bypass wef 1 DEC'08)	22.34											22.34
		400KV Mzp-Gkp	309.11											309.11
		220/132kV	105.31											105.31
		400KV Patna-Balia	224.55											224.55
		400KV Biharshariff-Balia	208.57											208.57
*	NR-WR	HVDC Vindhyachal B/B	70.00											70.00
		220KV Aur.-Mal.	30.53											30.53
		220KV Kota/Morak-Badod	7.12											7.12
		400KV Agra-Gwalior	0.00											0.00
		400KV Kankroli-Jerda	86.94											86.94
		400KV Bhinmal-Jerda	68.76											68.76
		400KV Barh - Balia	0.00											0.00
*	NR-ER	220/132kV	27.60											27.60
		400KV Mzp-Gkp	0.00											0.00
		HVDC Sasaram B/B (Bypass wef 1 DEC'08)	64.08											64.08
		400KV Patna-Balia	0.00											0.00
		400KV Biharshariff-Balia	0.00											0.00
*	NR-Nepal		19.17											19.17
**	ER-SR	HVDC-Gaz.	157.65											157.65
		HVDC-Tal.	1571.43											1571.43
**	SR-ER	HVDC-Gaz.	1.64											1.64
***	ER-WR	AC links	190.04											190.04
***	WR-ER	AC links	423.07											423.07
***	ER-NER	AC links	250.18											250.18
***	NER-ER	AC links	0.55											0.55
**	SR-WR	Chandrapur HVDC	0.00											0.00
**	WR-SR	Chandrapur HVDC	564.51											564.51
	TOTAL		5015	0	0	0	0	0	0	0	0	0	0	5015
	ER-SR	Tal.-Kol. Interconnector	227.01											227.01
	Net IR	(Excl. Tal.-II)	3217	0	0	0	0	0	0	0	0	0	0	3217

** Data is taken from SRLDC

*** Data is taken from ERLDC

STOA (BILATERAL AND COLLECTIVE) & UI BILLING DETAILS- APR' 2012

BILATERAL SHORT TERM OPEN ACCESS

Description	Name of RLDC	No. of Transactions	Energy Approved(MU)
APR'12	NR	267	789
	WR	119	1041
	SR	54	346
	ER	131	1182
	NER	18	102
TOTAL		589	3460

COLLECTIVE SHORT TERM OPEN ACCESS

MONTH	NO. of Buyers/Sellers	Approved Energy (MU)
APR'12	1654	1337.18
TOTAL		

MONTHLY UI BILLING DETAILS

REGION	NORTH	WEST	EAST	SOUTH	(RS. IN CRORES)
					NORTH EAST
(Upto 29th APR'12)	342	249	161	69	17

POWER MARKET INFORMATION
EXCHANGES THROUGH POWER EXCHANGES (IEX & PXI) - APRIL' 2012

S. No.	STATE	Through Power Exchange in MU	
		Sale	Purchase
1	Punjab	0.50	366.64
2	Haryana	0.01	87.27
3	Rajasthan	39.14	182.03
4	Delhi	142.25	0.10
5	Uttar Pradesh	4.23	95.67
6	Uttarakhand	0.00	5.07
7	Himachal Pradesh	92.42	0.00
8	J & K	3.07	0.00
9	UT Chandigarh	2.89	0.31
10	AD Hydro	4.24	0.00
11	KW	80.37	0.00
12	Shree Cement	0.14	0.00
13	Nathpa Jhakri	50.37	0.00
14	Baira Siul HEP(BS0)	6.68	0.00
15	Chamera-I HEP(CM1)	38.01	0.00
16	Chamera-II HEP(CM2)	26.29	0.00
17	Dhauliganga HEP(DG0)	9.58	0.00
18	Dulahasti HEP(DU0)	37.52	0.00
19	Salal HEP(SL0)	25.40	0.00
20	Sewa-II NHPC(SW2)	17.64	0.00
21	Tanakpur HEP(TP0)	2.28	0.00
22	Uri HEP(UR0)	57.22	0.00
23	MP	58.50	9.77
24	Maharashtra	19.13	138.66
25	Gujarat	120.61	247.89
26	Chattisgarh	133.03	0.00
27	Goa	0.00	0.00
28	Daman and Diu	0.00	0.00
29	Dadra & Nagar Haveli	0.00	0.00
30	JD	106.65	0.00
31	LANCO AMK	0.00	0.00
32	ACB India Limited	6.30	0.00
33	Jindal Steel and Power Ltd	23.38	0.00
34	Andhra Pradesh	40.89	24.51
35	Karnataka	0.00	0.25
36	Kerala	0.16	38.21
37	Tamilnadu	0.00	84.63
38	Pondicherry	0.00	0.00
39	Goa	0.00	0.00
40	LANCO_KONDPLY	0.00	0.00
41	SIMHAPURI	0.00	0.11
42	West Bengal	78.50	24.27
43	Orissa	0.00	7.68
44	Bihar	0.00	0.00
45	Jharkhand	0.00	0.00
46	Sikkim	15.16	0.00
47	DVC	17.79	0.00
48	STERLITE	0.00	0.00
49	Maithon Power Ltd	53.47	0.00
50	Arunachal Pradesh	0.00	7.09
51	Assam	9.42	14.41
52	Manipur	0.00	0.00
53	Meghalaya	1.40	2.62
54	Mizoram	0.00	0.00
55	Nagaland	0.00	0.00
56	Tripura	0.22	0.00
57	ASSAM GBPP	7.79	0.00
58	KOPILI	0.00	0.00
59	Agartala GTPP(AG0)	4.54	0.00

IMPORTANT EVENTS / DISTURBANCES – Apr 2012

At 14:32 Hrs.,22.04.12, Both Poles of Talcher- Kolar HVDC (Bipole setting :2000 MW towards SR) tripped due to commutation failure at Kolar HVDC in respect of delayed fault clearance of blasting of 220 KV CT at Somanhalli KSEB end and operation of ESOF from Pole Control at Talcher end. Unit# 6 of Talcher Stg.II tripped with simultaneous back down in generation of Unit# 3,4&5. N-E-W frequency increased to 50.39 Hz from 49.90 Hz while SR frequency dipped to 48.88 Hz from 49.70 Hz. Both Poles of Talcher- Kolar deblocked by 15:09 hours same day.

IMPORTANT ELEMENTS COMMISSIONED DURING April 2012

SL. NO	ELEMENT	VOLTAGE IN KV	DATE OF CHARGING
1	In WR, Essar(Vadinar)# 2(600MW) was synchronised for 1 st time at 1419 hours.	400	03/04/2012
2	In WR, Mouda #1 (500MW) was synchronised for 1 st time at 0147 hours.	400	07/04/2012
3	In ER, 400 KV Durgapur–Jamshedpur–II was taken in service for 1 st time at 2055 hours.	400	13/04/2012
4	In ER, 400 KV Farakka–Kahalgaon–IV was taken in service for 1 st time at 1329 hours.	400	21/04/2012
5	In NR, 765 KV Moga–Bhiwani was taken in service for 1 st time at 2153 hours.	765	21/04/2012
6	In NR, 400 KV Bhiwani–Mahendergarh was charged for 1 st time at 2248 hours.	400	30/04/2012
7	In NR.at Hissar S/S 125 MVAR bus–reactor was charged for 1 st time at 1636 hours.	400	07/04/2012

VOLTAGE PROFILE - APRIL 2012

Sl. No.	REGION	SUBSTATION	Maximum(kV)	Minimum(kV)
1	ER	FARAKKA	425	406
2		KAHALGAON	434	412
3		TALCHER	416	400
4		BINAGURI	416	393
5		PURNEA	425	391
6		MUZAFFARPUR	432	390
7		JAMSHEDPUR	432	410
8		RENGALI	428	395
9		JEYPORE	425	390
1	NR	NALLAGARH	431	402
2		BHIWADI	434	394
3		BALLABGARH	431	397
4		ALLAHABAD	431	396
5		HISSAR	421	391
6		BAWANA	422	396
7		KANPUR	413	392
1	WR	ASOJ	420	403
2		ITARSI	427	400
3		JETPUR	425	398
4		KARAD	421	397
5		KASOR	421	408
6		BINA	431	395
7		GWALIOR	411	388
8		DHULE	432	400

VOLTAGE PROFILE - APRIL 2012

SI. No.	REGION	SUBSTATION	Maximum(kV)	Minimum(kV)
1	SR	SRIPERUMPUDUR	421	375
2		MADRAS	429	372
3		NEYVELI	417	372
4		SALEM	417	382
5		BANGALORE	418	367
6		HOSUR	414	379
7		RAMAGUNDAM	419	397
8		VIJAYAWADA	432	410
9		TIRIVANDRUM	423	373
10		HYDERABAD	431	397
1	NER	MISA	429	384
2		BALIPARA	424	381
3		BONGAIGAON	422	381
4		SALAKATI	238	217
5		HAFLONG	141	123
6		AIZWAL	137	116
7		KUMARGHAT	138	123
8		IMPHAL	147	139
9		Khlieriat_PG	140	126