

# पावर सिस्टम ऑपरेशन कारपोरेशन लिमिटेड

(पावरग्रिड की पूर्ण स्वामित्व प्राप्त सहायक कंपनी)

## POWER SYSTEM OPERATION CORPORATION LIMITED

(A wholly owned subsidiary of POWERGRID)



पंजीकृत एवं केन्द्रीय कार्यालय : बी - 9, कुतुब इंस्टीट्यूशनल एरिया, कटवारिया सराय, नई दिल्ली - 110 016  
Registered & Corporate Office : B - 9, Qutab Institutional Area, Katwaria Sarai, New Delhi - 110 016  
Website : www.nldc.in, www.nldcindia.in, Tel. : 011-26536832, 26524522, Fax : 011-26524525, 26536901

संदर्भ संख्या:-POSOCO/NLDC/GM/

दिनांक: 20.09.2012

सेवा में,

वितरण सूची के अनुसार

विषय:- निष्पादन रिपोर्ट - अगस्त 2012

महोदय,

आई०ई०जी०सी०-2010 के प्रावधान के अनुसार, - अगस्त 2012 माह की अखिल भारतीय प्रणाली की निष्पादन रिपोर्ट

धन्यवाद,

भवदीय

(अवधेश मणि)

अपर महाप्रबंधक

(रा०भा०प्रे०के०)

संलग्नक: मासिक प्रणाली रिपोर्ट

## Distribution List

1. Secretary ,CERC, 3<sup>rd</sup> & 4<sup>th</sup> Floor , Chanderlok Building,36,Janpath,New Delhi-110001
2. Chief Engineer(GM),CEA,Sewa Bhavan, R.K.Puram , New Delhi-110066
3. Member Secretary ,NRPC,18/A,SJSS Marg, Katwaria Sarai,New Delhi-110016
4. Member Secretary ,WRPC,F-3,MIDC Area,Andheri (East),Mumbai-400093
5. Member Secretary,SRPC,29,Race Course Cross Road,Bangalore-560009
6. Member Secretary,ERPC,14,Golf Club Road , Kolkata-7000033
7. Member Secretary,NERPC,Meghalaya State Housing Finance Cooperative Society Ltd.  
Building,Nongrim Hills , Shillong -793003
8. General Manager , ERLDC,14, Golf Club Road , Kolkata-7000033
9. General Manager, WRLDC,F-3,MIDC Area,Andheri (East),Mumbai-400093
10. General Manager, NRLDC,18/A,SJSS Marg, Katwaria Sarai,New Delhi-110016
11. General Manager , SRLDC, 29,Race Course Cross Road,Bangalore-560009
12. AGM,NERLDC,Dongtiah,Lower Nongrah,Laplang,Shillong-793006

POWER SYSTEM OPERATION CORPORATION LTD  
NATIONAL LOAD DESPATCH CENTRE



OPERATIONAL PERFORMANCE REPORT FOR THE  
MONTH OF AUGUST 2012

## CONTENTS

1. SUMMARY OF REPORT FOR THE MONTH OF AUGUST 2012
2. REGION WISE INSTALLED CAPACITY
3. PEAK DEMAND MET AT NATIONAL LEVEL
4. ENERGY CONSUMPTION AT NATIONAL LEVEL
5. FREQUENCY PROFILE
6. HYDRO GENERATION AT NATIONAL LEVEL
7. WIND GENERATION AT NATIONAL LEVEL
8. PEAK DEMAND & ENERGY MET AT REGIONAL LEVEL
9. SCHEDULE & DRAWAL AT REGIONAL LEVEL
10. INTER-REGIONAL EXCHANGES
11. BILATERAL SHORT-TERM OPEN ACCESS & UI DETAILS
12. POWER MARKET INFORMATION
13. IMPORTANT EVENTS/DISTURBANCES
14. IMPORTANT ELEMENTS COMMISSIONED
15. VOLTAGE PROFILE

## **SUMMARY OF REPORT FOR THE MONTH OF AUGUST 2012**

- During the month of August 2012, the overall system was running normal to the large extent . The maximum of all India peak demand met was 112697 MW (on 24-08-2012) which is 0.43% more as compared to last year August month demand (112213MW) and 2.34% less as compared to July 2012 demand (115403MW).
- For 89.72% of time, the NEW grid frequency was in the IEGC band (49.5 – 50.2) against 73.59% of the time in the last month (July 2012). For SR Grid, the frequency remained within the IEGC band for 95.57% of the time against 92.18 % of the time in the last month (July 2012).
- All India energy consumption was 74293 MU at the average of 2476 MU/day which is 3.73% less than that of last month (July 2012) average energy consumption (77152 MUs, Average 2572 MU/day) and 3.88% more than the last year August month average energy consumption (73770 MU, Average 2380 MU/day).
- There was around 9.16 % decrement in average all India Hydro generation compared to last year & 17.54% increment compared to last month.
- Regarding wind generation, there was around 11.88% increment in average all India wind generation compared to last month. August 2012 average wind generation was 141 MU/day against 160MU/day in July 2012.

**ALL INDIA REGIONWISE GENERATING INSTALLED CAPACITY (MW) OF  
POWER UTILITIES INCLUDING ALLOCATED SHARES IN JOINT AND  
CENTRAL SECTOR**

**UTILITIES**

**(As on 31-08-12 )**

SL. NO	REGION	THERMAL				Nuclear	HYDRO (Renewable )	R.E.S.@ (MNRE)	TOTAL
		COAL	GAS	DSL	TOTAL				
1	Northern	29923.5	4671.2	12.99	34607.7	1620.0	15423.7	4437.65	56089.15
2	Western	42479.5	8254.8	17.48	50751.8	1840.0	7447.50	8146.69	68185.98
3	Southern	23032.5	4962.7	939.3	28934.6	1320.0	11338.0	11769.3	53361.95
4	Eastern	22337.8	190.00	17.20	22545	0.00	3882.12	410.71	26837.91
5	N. Eastern	60.00	824.20	142.7	1026.94	0.00	1200.00	228.00	2454.94
6	Islands	0.00	0.00	70.02	70.02	0.00	0.00	6.10	76.12
<b>7</b>	<b>All India</b>	<b>117833</b>	<b>18903</b>	<b>1200</b>	<b>137936</b>	<b>4780</b>	<b>39291</b>	<b>24998</b>	<b>207006</b>

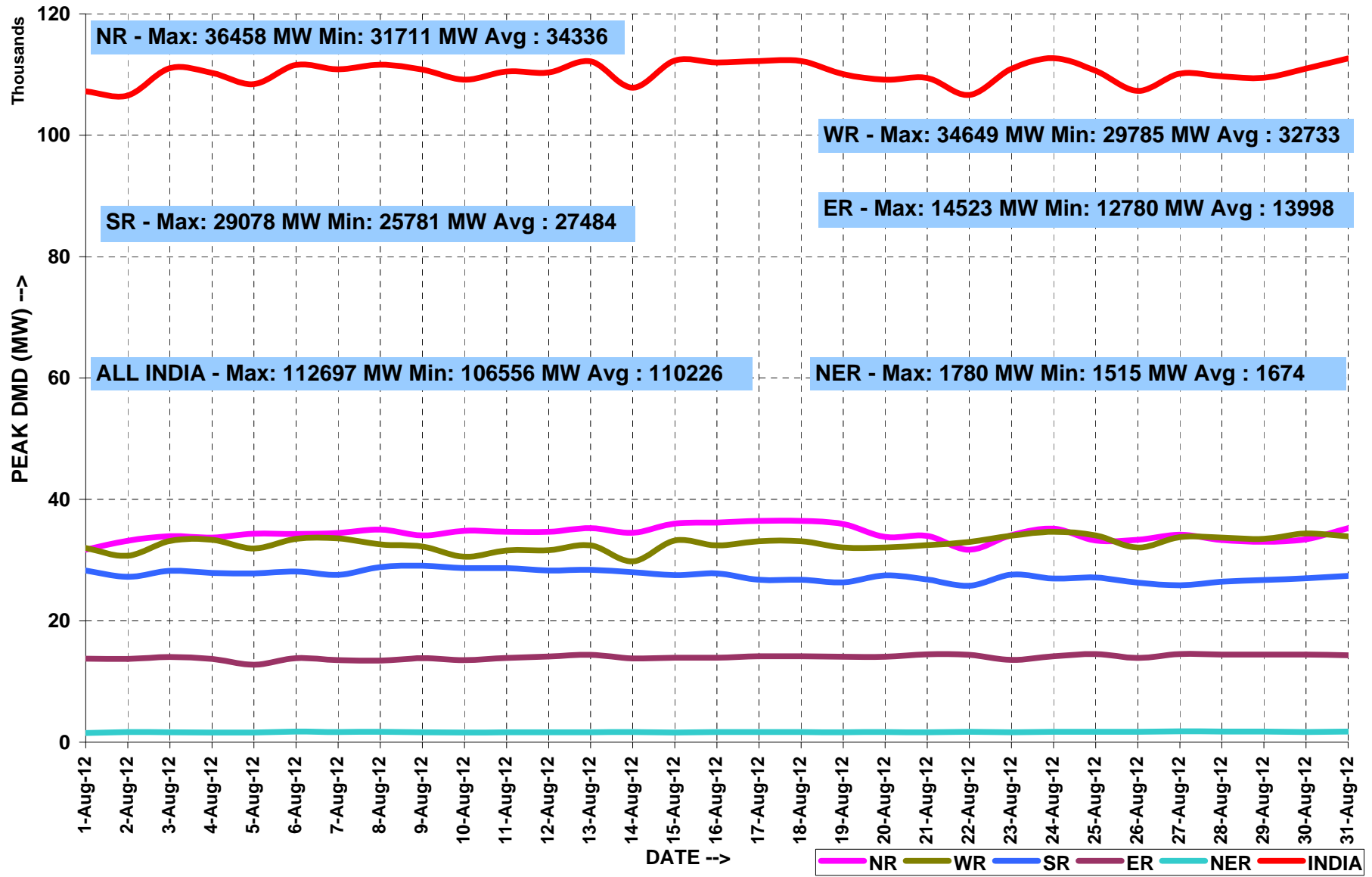
## PEAK DEMAND MET AT NATIONAL LEVEL

MONTH:- AUGUST 2012

All figures in MW

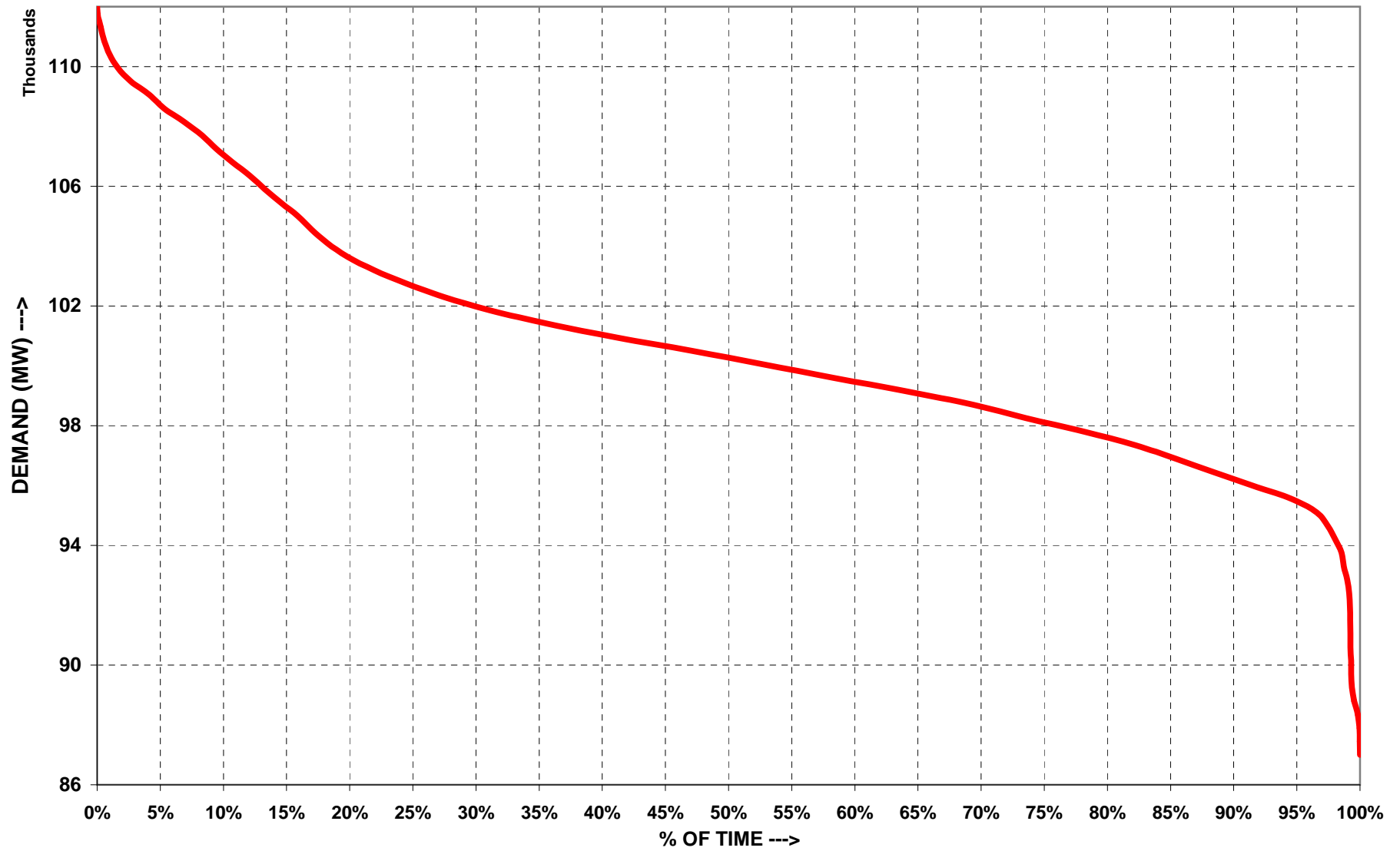
Date	NR	WR	SR	ER	NER	TOTAL
8/1/2012	31712	31992	28280	13751	1515	107250
8/2/2012	33199	30714	27246	13716	1681	106556
8/3/2012	33935	33160	28258	14059	1638	111050
8/4/2012	33695	33337	27901	13730	1586	110249
8/5/2012	34332	31907	27816	12780	1602	108437
8/6/2012	34325	33517	28132	13856	1749	111579
8/7/2012	34484	33594	27581	13531	1688	110878
8/8/2012	35035	32603	28850	13430	1716	111634
8/9/2012	34050	32230	29078	13827	1654	110839
8/10/2012	34813	30544	28672	13534	1605	109168
8/11/2012	34665	31602	28686	13894	1646	110493
8/12/2012	34682	31617	28298	14119	1639	110355
8/13/2012	35279	32449	28417	14401	1653	112199
8/14/2012	34526	29785	27996	13821	1689	107817
8/15/2012	36004	33237	27523	13927	1605	112296
8/16/2012	36175	32433	27798	13925	1666	111997
8/17/2012	36458	33121	26781	14157	1690	112207
8/18/2012	36458	33121	26781	14157	1690	112207
8/19/2012	35962	32066	26343	14067	1645	110083
8/20/2012	33829	32082	27479	14080	1679	109149
8/21/2012	33999	32490	26821	14467	1637	109414
8/22/2012	31711	32997	25781	14415	1726	106630
8/23/2012	34098	34044	27602	13572	1626	110942
8/24/2012	35181	34649	26973	14168	1726	112697
8/25/2012	33224	34068	27124	14523	1704	110643
8/26/2012	33361	32063	26298	13875	1708	107305
8/27/2012	34178	33787	25868	14523	1780	110136
8/28/2012	33312	33730	26452	14446	1765	109705
8/29/2012	33023	33491	26745	14451	1754	109464
8/30/2012	33440	34383	27016	14438	1689	110966
8/31/2012	35268	33911	27409	14306	1752	112646
MAXIMUM	36458	34649	29078	14523	1780	112697
MINIMUM	31711	29785	25781	12780	1515	106556
AVERAGE	34336	32733	27484	13998	1674	110226

## PEAK DEMANDS MET DURING THE MONTH OF AUGUST' 2012





# ALL INDIA LOAD DURATION CURVE FOR AUGUST' 2012



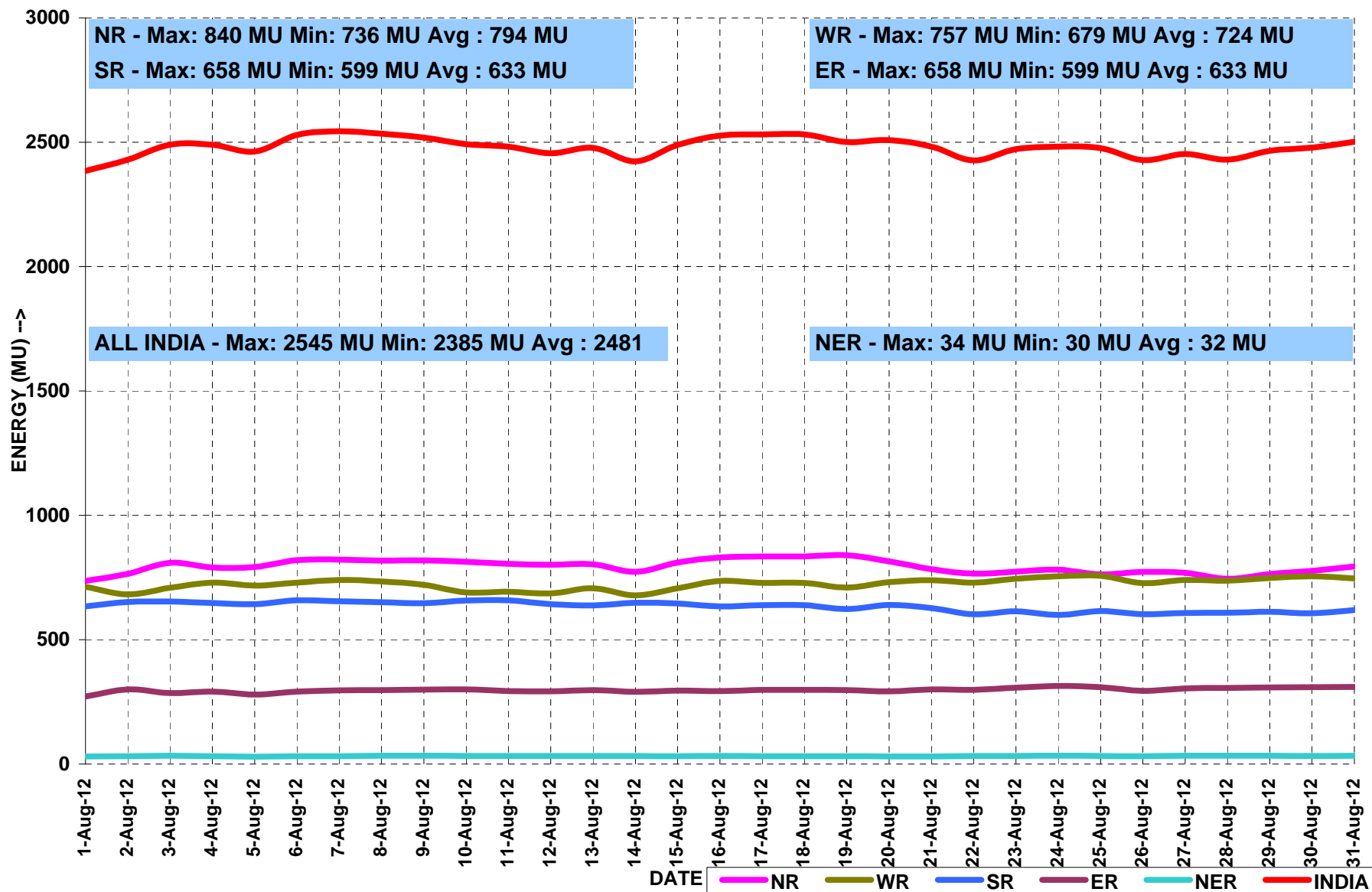
## ENERGY MET AT NATIONAL LEVEL

MONTH:- AUGUST 2012

All figures in MU

Date	NR	WR	SR	ER	NER	TOTAL
8/1/2012	736	713	634	272	30	2385
8/2/2012	764	682	652	300	31	2430
8/3/2012	809	709	654	286	34	2491
8/4/2012	790	729	648	291	31	2490
8/5/2012	792	717	643	280	30	2462
8/6/2012	819	730	658	291	32	2530
8/7/2012	822	740	655	296	32	2545
8/8/2012	818	734	651	298	33	2534
8/9/2012	819	721	647	300	33	2519
8/10/2012	813	690	657	300	32	2492
8/11/2012	805	693	658	293	33	2482
8/12/2012	802	686	643	292	32	2455
8/13/2012	803	707	638	297	32	2477
8/14/2012	773	679	649	291	32	2423
8/15/2012	810	707	646	295	32	2490
8/16/2012	831	737	634	293	32	2527
8/17/2012	834	729	639	298	31	2531
8/18/2012	834	729	639	298	31	2531
8/19/2012	840	709	623	297	32	2501
8/20/2012	815	731	640	293	31	2509
8/21/2012	784	740	627	301	31	2482
8/22/2012	765	729	602	298	33	2427
8/23/2012	774	746	614	307	32	2472
8/24/2012	782	755	599	314	33	2482
8/25/2012	762	757	615	309	33	2476
8/26/2012	773	728	602	294	32	2428
8/27/2012	768	740	607	304	34	2453
8/28/2012	745	737	608	306	34	2430
8/29/2012	764	748	612	308	34	2466
8/30/2012	776	755	606	309	33	2478
8/31/2012	794	746	619	310	33	2502
<b>TOTAL</b>	<b>23822</b>	<b>21703</b>	<b>19000</b>	<b>8910</b>	<b>964</b>	<b>74399</b>
<b>MAXIMUM</b>	<b>840</b>	<b>757</b>	<b>658</b>	<b>314</b>	<b>34</b>	<b>2545</b>
<b>MINIMUM</b>	<b>736</b>	<b>679</b>	<b>599</b>	<b>272</b>	<b>30</b>	<b>2385</b>
<b>AVERAGE</b>	<b>794</b>	<b>724</b>	<b>633</b>	<b>297</b>	<b>32</b>	<b>2481</b>

### ENERGY MET DURING THE MONTH OF AUGUST' 2012

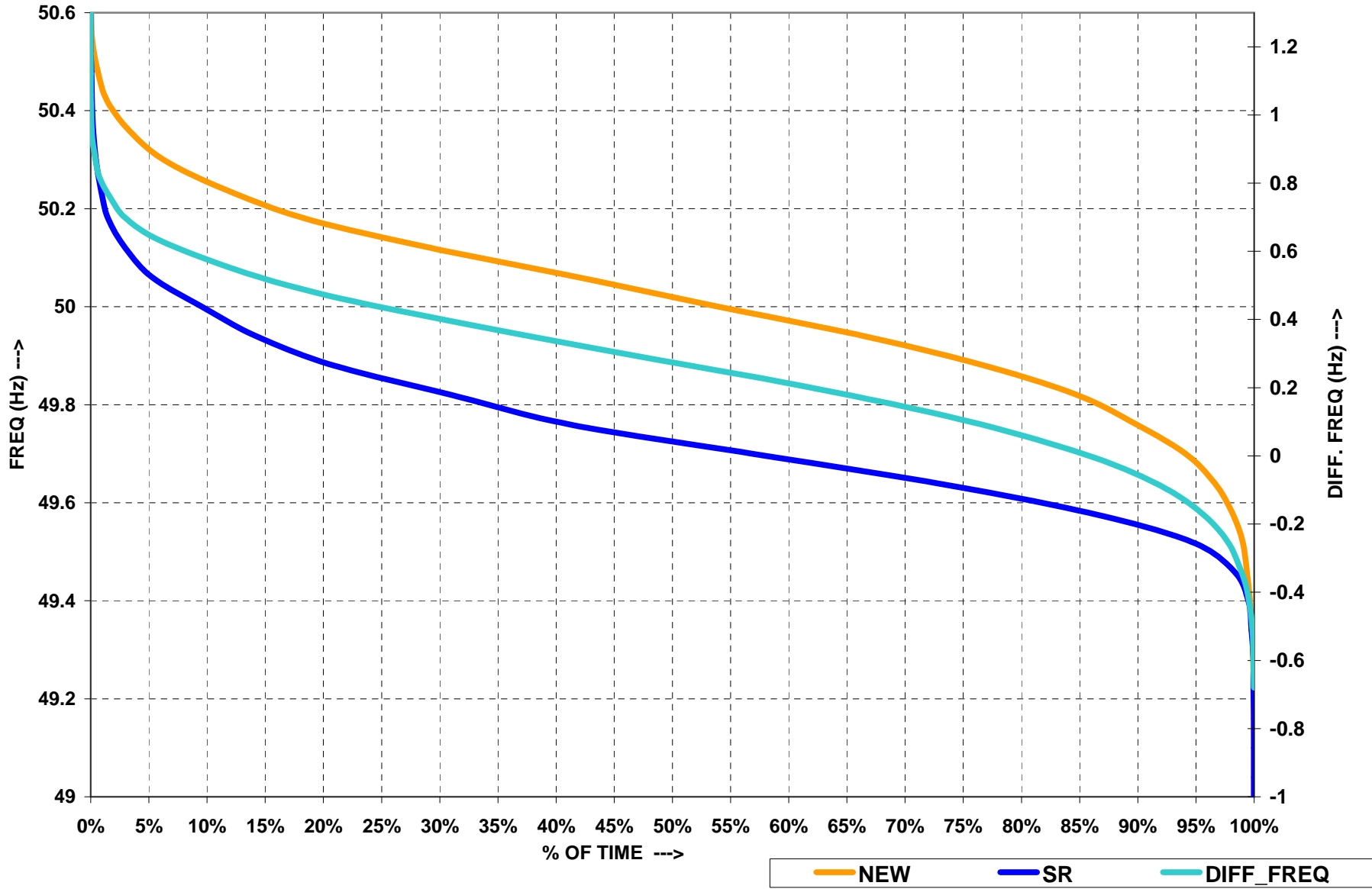


**FREQUENCY PROFILE FOR THE MONTH OF AUGUST 2012**

<b>SR GRID</b>										
<b>FREQUENCY PROFILE</b>		<b>&lt; 48.5</b>	<b>48.5 - 49.5</b>	<b>&lt; 49.5</b>	<b>49.5 - 50.2</b>	<b>&gt;50.2</b>		<b>Max. Freq</b>	<b>Min. Freq</b>	<b>Avg. Freq</b>
<b>% TIME</b>	<b>Apr-12</b>	0.00	7.79	7.79	91.28	0.93		50.66	48.66	49.69
	<b>May-12</b>	0.00	5.61	5.61	94.01	0.38		50.63	48.81	49.7
	<b>Jun-12</b>	0.00	7.83	7.83	91.03	1.14		50.79	48.86	49.68
	<b>Jul-12</b>	0.00	0.00	6.95	92.18	0.87		50.61	48.81	49.69
	<b>Aug-12</b>	0.00	3.17	3.17	95.57	1.26		50.55	48.86	49.75

<b>NEW GRID</b>										
<b>FREQUENCY PROFILE</b>		<b>&lt; 48.5</b>	<b>48.5 - 49.5</b>	<b>&lt; 49.5</b>	<b>49.5 - 50.2</b>	<b>&gt;50.2</b>		<b>Max. Freq</b>	<b>Min. Freq</b>	<b>Avg. Freq</b>
<b>% TIME</b>	<b>Apr-12</b>	0.00	2.38	2.38	93.68	3.94		50.66	49.08	49.9
	<b>May-12</b>	0.00	10.82	10.82	87.82	1.36		50.75	48.82	49.8
	<b>Jun-12</b>	0.00	19.95	19.95	78.66	1.39		50.68	48.75	49.7
	<b>Jul-12</b>	0.00	24.38	24.38	73.59	2.03		51.21	49.79	49.68
	<b>Aug-12</b>	0.00	1.57	1.57	89.72	8.71		50.65	48.82	49.95

# FREQUENCY DURATION CURVES FOR AUGUST' 2012



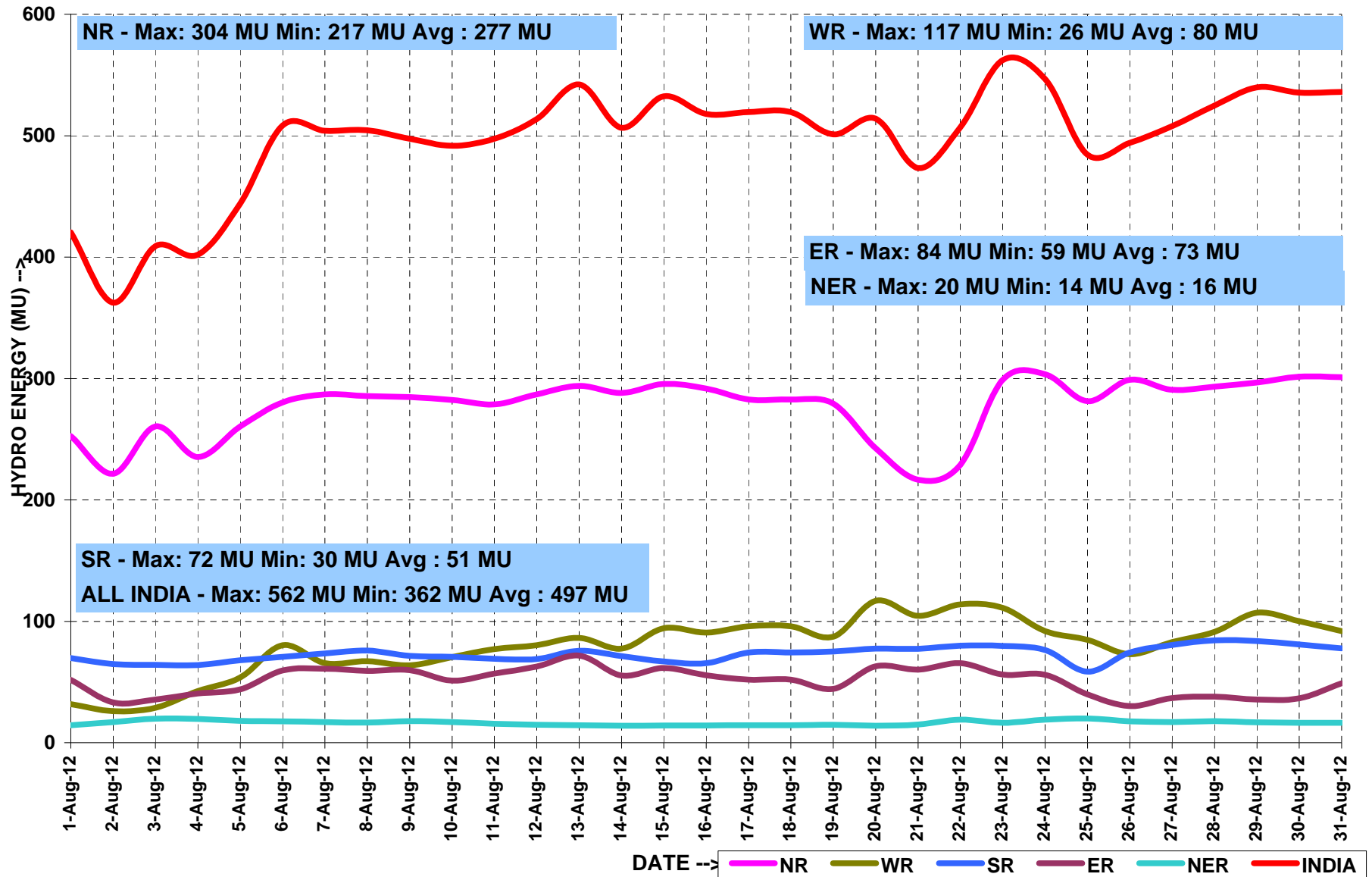
## HYDRO GENERATION AT NATIONAL LEVEL

MONTH:- AUGUST 2012

All figures in MU

Date	NR	WR	SR	ER	NER	TOTAL
8/1/2012	253	32	52	70	14	420
8/2/2012	222	26	33	65	17	362
8/3/2012	261	29	36	64	20	409
8/4/2012	235	43	41	64	20	402
8/5/2012	261	54	44	68	18	444
8/6/2012	280	80	60	71	18	509
8/7/2012	287	66	61	74	17	504
8/8/2012	286	67	59	76	17	504
8/9/2012	285	64	60	72	18	498
8/10/2012	282	71	51	71	17	492
8/11/2012	279	77	57	69	16	498
8/12/2012	284	80	55	70	14	502
8/13/2012	287	80	63	69	15	514
8/14/2012	294	86	72	76	14	542
8/15/2012	288	78	55	71	14	507
8/16/2012	296	94	62	67	14	532
8/17/2012	292	91	56	66	14	518
8/18/2012	283	96	52	74	14	519
8/19/2012	279	87	44	75	15	501
8/20/2012	243	117	63	78	14	514
8/21/2012	217	104	60	77	15	473
8/22/2012	229	114	66	80	19	507
8/23/2012	299	111	56	80	16	562
8/24/2012	304	92	56	76	19	547
8/25/2012	281	85	40	59	20	484
8/26/2012	299	73	30	74	18	494
8/27/2012	291	83	37	81	17	508
8/28/2012	293	91	38	84	18	525
8/29/2012	297	107	36	84	17	540
8/30/2012	302	100	37	81	16	535
8/31/2012	301	92	49	78	16	536
<b>TOTAL</b>	<b>8284</b>	<b>2377</b>	<b>1529</b>	<b>2184</b>	<b>492</b>	<b>14866</b>
<b>MAXIMUM</b>	<b>304</b>	<b>117</b>	<b>72</b>	<b>84</b>	<b>20</b>	<b>562</b>
<b>MINIMUM</b>	<b>217</b>	<b>26</b>	<b>30</b>	<b>59</b>	<b>14</b>	<b>362</b>
<b>AVERAGE</b>	<b>277</b>	<b>80</b>	<b>51</b>	<b>73</b>	<b>16</b>	<b>497</b>

## HYDRO ENERGY DURING THE MONTH OF AUGUST' 2012



## WIND GENERATION AT NATIONAL LEVEL

MONTH:- AUGUST 2012

All figures in MU

Date	NR	WR	SR	ER	NER	TOTAL
8/1/2012	18	72	87	...	...	177
8/2/2012	33	77	97	...	...	207
8/3/2012	32	84	108	...	...	224
8/4/2012	22	72	102	...	...	196
8/5/2012	4	51	97	...	...	153
8/6/2012	3	44	104	...	...	151
8/7/2012	5	42	94	...	...	140
8/8/2012	3	53	92	...	...	148
8/9/2012	11	68	99	...	...	177
8/10/2012	11	52	106	...	...	168
8/11/2012	4	44	102	...	...	150
8/12/2012	5	62	71	...	...	138
8/13/2012	6	61	68	...	...	136
8/14/2012	6	57	84	...	...	146
8/15/2012	6	44	81	...	...	132
8/16/2012	6	45	92	...	...	143
8/17/2012	9	44	99	...	...	151
8/18/2012	9	44	99	...	...	151
8/19/2012	10	30	102	...	...	141
8/20/2012	6	25	99	...	...	131
8/21/2012	16	32	75	...	...	123
8/22/2012	17	29	32	...	...	78
8/23/2012	11	21	43	...	...	75
8/24/2012	16	28	49	...	...	93
8/25/2012	18	36	79	...	...	134
8/26/2012	7	28	87	...	...	122
8/27/2012	5	21	90	...	...	116
8/28/2012	3	25	98	...	...	125
8/29/2012	2	14	98	...	...	113
8/30/2012	1	16	87	...	...	104
8/31/2012	1	10	86	...	...	97
<b>TOTAL</b>	<b>305</b>	<b>1318</b>	<b>2621</b>	<b>...</b>	<b>...</b>	<b>4244</b>
<b>MAXIMUM</b>	<b>33</b>	<b>84</b>	<b>108</b>	<b>...</b>	<b>...</b>	<b>224</b>
<b>MINIMUM</b>	<b>1</b>	<b>10</b>	<b>32</b>	<b>...</b>	<b>...</b>	<b>75</b>
<b>AVERAGE</b>	<b>10</b>	<b>43</b>	<b>87</b>	<b>...</b>	<b>...</b>	<b>140</b>



**ACTUAL POWER SUPPLY POSITION - AUGUST 2012**

REGION	STATE	Requirement/Availability in MU/DAY			Requirement/Availability in MU				Peak Demand/Peak Met in MW			
		Requirement	Energy met	Surplus(+)/ Deficit(-)	Requirement	Energy met	Surplus(+)/ Deficit(-)	% Shortage	Requirement	Peak Demand	Surplus(+)/ Deficit(-)	% Shortage
NR	Chandigarh	5	5	0	160	160	0	0	303	303	0	0
	Delhi	88	88	0	2730	2728	-1	0	5727	4652	-1075	-19
	Haryana	129	119	-10	3990	3684	-306	8	7098	6598	-500	-7
	H.P.	24	23	-1	740	723	-18	2	1196	1196	0	0
	J&K	39	29	-10	1196	897	-299	25	2283	1712	-571	-25
	Punjab	191	173	-19	5936	5354	-582	10	8751	7943	-808	-9
	Rajasthan	127	125	-2	3937	3862	-75	2	7044	7044	0	0
	U.P.	243	204	-39	7545	6337	-1207	16	11410	10614	-796	-7
	Uttarakhand	31	28	-3	951	862	-89	9	1607	1527	-80	-5
	NFF/Railway	2	2	0	70	70	0	0	103	103	0	0
	<b>TOTAL</b>	<b>879</b>	<b>796</b>	<b>-83</b>	<b>27254</b>	<b>24678</b>	<b>-2577</b>	<b>9</b>	<b>42214</b>	<b>38469</b>	<b>-3745</b>	<b>-9</b>
WR	Gujarat	230	228	-1	7115	7078	-37	-1	11897	11794	-103	-1
	Madhya Pradesh	96	95	-1	2990	2951	-39	-1	5916	5861	-55	-1
	Chhattisgarh	60	60	-1	1864	1848	-16	-1	3199	2935	-264	-8
	Maharashtra	325	313	-12	10064	9702	-362	-4	16317	15158	-1159	-7
	Goa	7	7	0	229	226	-3	-1	425	418	-7	-2
	D&D	6	6	0	173	173	0	0	260	232	-28	-11
	DNH	14	14	0	426	421	-4	-1	611	603	-8	-1
	<b>TOTAL</b>	<b>737</b>	<b>723</b>	<b>-15</b>	<b>22861</b>	<b>22399</b>	<b>-462</b>	<b>-2</b>	<b>35659</b>	<b>34383</b>	<b>-1276</b>	<b>-4</b>
SR	AP-TRANSCO	266	210	-56	8236	6513	-1723	-21	10910	9929	-981	-9
	KPTCL	173	145	-28	5367	4493	-874	-16	8913	7689	-1224	-14
	KSEB	55	53	-1	1694	1656	-38	-2	3427	3250	-177	-5
	TNEB	253	218	-35	7851	6773	-1078	-14	11914	10751	-1163	-10
	PONDY	6	6	0	195	186	-9	-5	331	300	-31	-9
		<b>TOTAL</b>	<b>753</b>	<b>633</b>	<b>-120</b>	<b>23344</b>	<b>19621</b>	<b>-3723</b>	<b>-16</b>	<b>33483</b>	<b>29695</b>	<b>-3788</b>
ER	Bihar	39	33	-39	1215	1033	-182	-15	2450	1751	-699	-29
	JSEB	20	19	-1	610	580	-30	-5	1125	1004	-121	-11
	GRIDCO	50	52	2	1550	1608	58	4	2495	2377	-118	-5
	DVC	69	69	0	2135	2147	12	1	3510	3521	11	0
	West Bengal	135	131	-4	4171	4047	-124	-3	6744	7124	380	6
	<b>TOTAL</b>	<b>312</b>	<b>304</b>	<b>-9</b>	<b>9681</b>	<b>9415</b>	<b>-266</b>	<b>-3</b>	<b>16950</b>	<b>14813</b>	<b>-2137</b>	<b>-13</b>
NER	Arunachal Pradesh	2	1	0	49	46	-3	-6	105	103	-2	-2
	Assam	21	20	-1	648	606	-42	-6	1171	1095	-76	-7
	Manipur	2	2	0	54	52	-2	-4	120	119	-1	-1
	MeSEB	4	4	0	137	127	-10	-7	287	275	-12	-4
	Mizoram	1	1	0	36	34	-2	-4	65	62	-3	-5
	Nagaland	1	1	0	45	42	-3	-6	101	97	-4	-4
	Tripura	3	3	0	103	97	-5	-5	211	178	-33	-15
	<b>TOTAL</b>	<b>35</b>	<b>32</b>	<b>-2</b>	<b>1072</b>	<b>1005</b>	<b>-67</b>	<b>-6</b>	<b>2061</b>	<b>1929</b>	<b>-131</b>	<b>-6</b>

**SCHEDULE AND DRAWAL OF CONSTITUENTS - AUGUST 2012**

REGION	STATE	SCHEDULE (MU)	ACTUAL DRAWAL (MU)	Over drawal(+)/ Under Drawal(-) (MU)	SCHEDULE (MU/DAY)	ACTUAL DRAWAL (MU/DAY)	Over drawal(+)/ Under Drawal(-) (MU/DAY)
NR	Chandigarh	185	168	-18	6	5	-1
	Delhi	2077	1894	-184	67	61	-6
	Haryana	2042	2041	0	66	66	0
	H.P.	39	-22	-60	1	-1	-2
	J&K	564	424	-140	18	14	-5
	Punjab	3357	3397	39	108	110	1
	Rajasthan	1360	1357	-3	44	44	0
	U.P.	3518	3483	-35	113	112	-1
	Uttarakhand	383	407	24	12	13	1
	NFF/Railway	64	70	6	2	2	0
WR	Gujarat	1212	1472	260	39	47	8
	Madhya Pradesh	1202	1163	-39	39	38	-1
	Maharashtra	3329	3514	185	107	113	6
	Chhattisgarh	375	419	43	12	14	1
	Goa	210	210	0	7	7	0
	D&D	180	173	-7	6	6	0
	D&NH	444	421	-23	14	14	-1
SR	APTRANSCO	1735	1879	144	56	61	5
	KPTCL	811	762	-49	26	25	-2
	KSEB	887	977	91	29	32	3
	TNEB	1478	1490	12	48	48	0
	PONDY	195	186	-9	6	6	0
	GOA(SR)	59	50	-10	2	2	0
ER	Bihar	1054	1059	6	34	34	0
	JSEB	341	267	-75	11	9	-2
	DVC	-429	-371	58	-14	-12	2
	GRIDCO	411	460	48	13	15	2
	Sikkim	1110	1170	61	36	38	2
	WBSEB	28	29	1	1	1	0
NER	Arunachal Pradesh	56	51	-5	2	2	0
	Assam	380	425	45	12	14	1
	Manipur	69	53	-16	2	2	-1
	MeSEB	60	59	-1	2	2	0
	Mizoram	36	29	-7	1	1	0
	Nagaland	31	27	-4	1	1	0
	Tripura	23	25	2	1	1	0

## Inter-Regional Exchanges (2012-2013)

All figs. in MUs  
ALL FIGURES ARE IN MUs

		Apr-12	May-12	Jun-12	Jul-12	Aug-12	Sep-12	Oct-12	Nov-12	Dec-12	Jan-13	Feb-13	Mar-13	Total FINANCIAL YEAR2012-13 (Till June'12)
*	WR-NR	HVDC Vindhyachal B/B	22.31	146.15	203.64	198.81	212.96							783.87
		HVDC Mundra-M'garh				221.62	328.28							549.90
		220KV Aur.-Mal.	0.33	0.00	1.51	9.17	0.00							11.00
		220KV Kota/Morak-Badod	6.94	40.25	11.71	42.95	16.11							117.95
		400KV Agra-Gwalior	460.85	610.16	697.97	712.15	378.55							2859.69
		400KV Kankroli-Jerda	4.20	20.06	72.81	66.97	0.99							165.03
		400KV Bhinmal-Jerda	3.30	40.92	72.65	94.51	4.58							215.96
*	ER-NR	400KV Barh - Balia	114.24	214.97	175.75	122.11	46.34							673.41
		HVDC Sasaram B/B (Bypass wef 1 DEC'08)	22.34	63.33	58.57	180.46	101.20							425.90
		765 kV Gaya - Fatehpur					82.99							82.99
		400KV Mzp-Gkp	309.11	484.33	447.30	670.69	499.81							2411.23
		220/132kV	105.31	98.91	105.40	98.24	101.12							508.97
		400KV Patna-Balia	224.55	320.90	299.47	370.14	256.53							1471.58
		400kV Pusauli- Balia	0.00	0.00	7.54	13.48	6.48							27.50
		400KV Biharshariff-Balia	208.57	293.31	274.10	330.85	231.34							1338.17
*	NR-WR	HVDC Vindhyachal B/B	70.00	17.02	16.83	19.77	6.86							130.48
		220KV Aur.-Mal.	30.53	32.46	17.41	10.57	35.00							125.97
		220KV Kota/Morak-Badod	7.12	0.67	0.80	0.00	14.83							23.42
		400KV Agra-Gwalior	0.00	0.00	0.00	0.00	0.00							0.00
		400KV Kankroli-Jerda	86.94	14.45	11.31	5.92	46.44							165.06
		400KV Bhinmal-Jerda	68.76	8.67	12.42	8.51	42.83							141.20
*	NR-ER	400KV Barh - Balia	0.00	0.00	0.00	0.00	0.00							0.00
		220/132kV	27.60	26.92	26.92	28.05	28.32							137.82
		400KV Mzp-Gkp	0.00	0.00	0.00	0.00	0.00							0.00
		HVDC Sasaram B/B (Bypass wef 1 DEC'08)	64.08	22.02	39.74	6.49	14.58							146.91
		400KV Patna-Balia	0.00	0.00	0.00	0.00	0.00							0.00
		400kV Pusauli- Balia				3.69	9.95							13.64
		400KV Biharshariff-Balia	0.00	0.00	0.00	0.00	0.00							0.00
*	NR-Nepal		19.17	11.91	11.91	13.25	10.28							66.52
**	ER-SR	HVDC-Gaz.	157.65	108.00	195.80	349.42	215.55							1026.42
		HVDC-Tal.	1571.43	1605.35	1427.68	1289.96	1070.88							6965.30
**	SR-ER	HVDC-Gaz.	1.64	1.16	2.83	0.42	3.51							9.56
***	ER-WR	AC links	115.00	206.00	102.00	0.00	35.00							458.00
***	WR-ER	AC links	349.00	426.00	601.00	656.00	376.00							2408.00
***	ER-NER	AC links	246.00	232.00	106.00	70.00	91.00							745.00
***	NER-ER	AC links	0.00	0.00	0.00	7.00	0.00							7.00
**	SR-WR	Chandrapur HVDC	0.00	0.00	0.00	0.00	0.00							0.00
**	WR-SR	Chandrapur HVDC	564.51	542.48	566.08	654.82	676.44							3004.33
	<b>TOTAL</b>		<b>4861</b>	<b>5588</b>	<b>5567</b>	<b>6256</b>	<b>4945</b>	<b>0</b>	<b>0</b>	<b>0</b>	<b>0</b>	<b>0</b>	<b>0</b>	<b>27218</b>
	ER-SR	Tal.-Kol. Interconnector	227.01	247.0	349.0	359.0	259.6							1441.63
	Net IR	(Excl. Tal.-II)	3063	3736	3790	4607	3614	0	0	0	0	0	0	18811

\*\* Data is taken from SRLDC

\*\*\* Data is taken from ERLDC

**STOA (BILATERAL AND COLLECTIVE) & UI BILLING DETAILS- AUGUST' 2012**

**BILATERAL SHORT TERM OPEN ACCESS**

Description	Name of RLDC	No. of Transactions	Energy Approved(MU)
AUG'12	NR	702	3026
	WR	94	745
	SR	96	997
	ER	199	629
	NER	12	29
<b>TOTAL</b>		<b>1103</b>	<b>5425</b>

**COLLECTIVE SHORT TERM OPEN ACCESS**

MONTH	NO. of Buyers/Sellers	Approved Energy (MU)
APR'12	1676	1337
MAY'12	1535	1478
JUN'12	1650	1630
JULY'12	1938	1572
AUG'12	1876	1860
<b>TOTAL</b>	<b>8675</b>	<b>7878</b>

**MONTHLY UI BILLING DETAILS**

REGION	(RS. IN CRORES)				
	NORTH	WEST	EAST	SOUTH	NORTH EAST
(Upto 29th APR'12)	342	249	161	69	17
(Upto 27th MAY'12)	937	630	363	135	32
(Upto 01st JULY'12)	1,913	1,109	807	219	56
(Upto 15th JULY'12)	2,252	1,287	1,017	262	71
(Upto 26th AUG'12)	3,127	1,778	1,418	345	104

**POWER MARKET INFORMATION**  
**EXCHANGES THROUGH POWER EXCHANGES ( IEX & PXD) - AUG' 2012**

S. No.	STATE	Through Power Exchange in MU	
		Sale	Purchase
1	Punjab	0.00	369.71
2	Haryana	0.00	148.18
3	Rajasthan	24.49	121.85
4	Delhi	119.31	8.03
5	Uttar Pradesh	0.00	213.07
6	Uttarakhand	0.20	49.11
7	Himachal Pradesh	213.58	0.00
8	J & K	6.07	0.00
9	UT Chandigarh	12.83	0.50
10	AD Hydro	21.05	0.00
11	KW	115.03	0.00
12	Shree Cement	18.50	0.00
13	Nathpa Jhakri	0.00	0.00
14	Baira Siul HEP(BS0)	4.33	0.00
15	Chamera-I HEP(CM1)	12.69	0.00
16	Chamera-II HEP(CM2)	12.00	0.00
17	Dhauliganga HEP(DG0)	10.95	0.00
18	Dulahasti HEP(DU0)	13.99	0.00
19	Salal HEP(SL0)	23.52	0.00
20	Sewa-II NHPC(SW2)	2.15	0.00
21	Tanakpur HEP(TP0)	3.60	0.00
22	Uri HEP(UR0)	13.01	0.00
23	MP	392.75	22.61
24	Maharashtra	14.67	168.68
25	Gujarat	55.30	312.40
26	Chattisgarh	91.40	0.00
27	Goa	12.93	0.00
28	Daman and Diu	0.00	0.00
29	Dadra & Nagar Haveli	0.00	0.00
30	JD	85.71	0.00
31	LANCO AMK	45.32	0.00
32	ACB India Limited	4.29	0.00
33	Jindal Steel and Power Ltd	40.92	0.00
34	Balco-II	1.99	0.00
35	Andhra Pradesh	52.88	109.65
36	Karnataka	222.08	3.21
37	Kerala	0.00	216.96
38	Tamilnadu	0.00	48.46
39	Pondicherry	0.00	0.00
40	Goa	0.00	0.00
41	LANCO_KONDPLY	0.00	0.00
42	SIMHAPURI	8.66	0.00
43	MINAXI	0.00	0.00
44	West Bengal	66.65	46.04
45	Orissa	32.81	0.00
46	Bihar	0.00	0.00
47	Jharkhand	0.00	0.00
48	Sikkim	25.41	0.00
49	DVC	31.00	0.00
50	STERLITE	7.36	0.00
51	Maithon Power Ltd	10.13	0.00
52	Arunachal Pradesh	0.00	0.00
53	Assam	0.00	20.65
54	Manipur	0.00	0.00
55	Meghalaya	3.03	1.80
56	Mizoram	3.74	0.00
57	Nagaland	0.00	0.00
58	Tripura	3.91	0.05
59	ASSAM GBPP	7.67	0.00
60	KOPILI	0.00	0.00
61	Agartala GTPP(AG0)	4.47	0.00
62	Loktak	9	0.00

## VOLTAGE PROFILE - AUGUST 2012

Sl. No.	REGION	SUBSTATION	Maximum(kV)	Minimum(kV)
1	ER	FARAKKA	429	414
2		KAHALGAON	436	412
3		TALCHER	428	412
4		BINAGURI	426	400
5		PURNEA	425	398
6		MUZAFFARPUR	425	389
7		JAMSHEDPUR	432	416
8		RENGALI	424	408
9		JEYPORE	438	370
1	NR	NALLAGARH	422	387
2		BHIWADI	434	390
3		BALLABGARH	423	411
4		ALLAHABAD	436	405
5		HISSAR	416	386
6		BAWANA	420	395
7		KANPUR	424	395
8		BASSI	435	393
9		LUCKNOW PG	429	397
10		MOGA	420	388
11		RATANGARH	428	388
1	WR	ASOJ	421	391
2		ITARSI	427	399
3		JETPUR	427	367
4		KARAD	433	405
5		KASOR	422	405
6		BINA	431	390
7		GWALIOR	432	398
8		RAIPUR	432	417
9		JABALPUR	432	404
10		DHULE	436	404

## VOLTAGE PROFILE - AUGUST 2012

Sl. No.	REGION	SUBSTATION	Maximum(kV)	Minimum(kV)
1	SR	SRIPERUMPUDUR	421	383
2		NEYVELI	418	391
3		SALEM	422	387
4		BANGALORE	425	385
5		HOSUR	420	388
6		RAMAGUNDAM	418	404
7		VIJAYAWADA	434	416
8		TIRIVANDRUM	435	382
9		HYDERABAD	431	406
1	NER	MISA	422	397
2		BALIPARA	420	386
3		BONGAIGAON	411	391
4		SALAKATI 220 kV	232	216
5		HAFLONG 132 kV	138	123
6		AIZWAL 132 kV	137	115
7		KUMARGHAT 132 kV	136	123
8		IMPHAL 132 kV	140	120
9		Khlieriat_PG 132 kV	136	125

## IMPORTANT EVENTS / DISTURBANCES - AUGUST 2012

**NIL**

## IMPORTANT ELEMENTS COMMISSIONED DURING AUGUST 2012

<b>SL. NO</b>	<b>ELEMENT</b>	<b>VOLTAGE (KV)</b>	<b>DATE OF CHARGING</b>
<b>1</b>	ICT # 2(3*500 MVA) 765/400 kV from 400 kV end test charged at no load for the first time (AGRA POWERGRID S/S)	765/400	1450 Hrs on 10.08.2012
<b>2</b>	ICT # 1(3*500 MVA) 765/400 kV from 765 kV end test charged at no load for the first time (MOGA POWERGRID S/S)	765/400	1912 Hrs on 10.08.2012
<b>3</b>	90 MVA ,400/11 kV Station Transformer at Raghunathpur in Eastern Region first time charged	400/11 kV	1444 Hrs on 14.08.2012
<b>4</b>	400 kV Khaparkheda – Koradi Circuit II of MSETCL	400 kV	1623 Hrs 14.08.2012
<b>5</b>	ICT #1 (2*315 MVA ) , 400/220 kV ICT #2 (2*315 MVA ) , 400/220 kV BALCO, Western Region	400/220 kV	1807 Hrs on 14.08.2012
<b>6</b>	ICT # 2 (200 MVA) , NTPC MAUDA	400/132 kV	1808 Hrs 19.08.2012
<b>7</b>	200 MVA ICT at NTPC BARH S/S	400/132/33 kV	1347 Hrs on 21.08.2012
<b>8</b>	100 MVA ICT #2 at LALMATIA(JSEB)	220/132 kV	1546 Hrs 24.08.2012
<b>9</b>	400 kV UPCL – HASAN Circuit – II , SOUTHERN REGION	400 kV	1459 Hrs on 25.08.2012
<b>10</b>	400 kV Warora – Tiroda Circuit – II of Adani Power Ltd.	400 kV	1239 Hrs on 26.08.2012
<b>11</b>	2* 80 MVAR Bus Reactor at Tiroda S/S of Adani Power Ltd.	400 kV	26.08.2012
<b>12</b>	LILO of 400 kV Raigarh – Raipur Circuit – III at KSK	400 kV	29.08.2012
<b>13</b>	400 kV JAYPEE – BINA s/c	400 kV	1831 Hrs on 30.08.2012



<b>SL. NO</b>	<b>ELEMENT</b>	<b>VOLTAGE (KV)</b>	<b>DATE OF CHARGING</b>
<b>14</b>	LILO of CGPL – CHORANIA circuit – I at JETPUR	400 kV	1912 Hrs on 31.08.2012
<b>15</b>	400 kV Gurgaon – Manesar circuit – I	400 kV	2017 Hrs on 31.08.2012
<b>16</b>	400 kV Gurgaon – Manesar circuit – II	400 kV	2042 Hrs on 31.08.2012
<b>17</b>	ICT # 2 ( 3*333 MVA) , 765/400 kV at SATNA S/S , POWERGRID IN WESTERN REGION	765/400 kV	2206 Hrs on 31.08.2012
<b>18</b>	ICT # 1 ( 3*333 MVA) , 765/400 kV at BINA S/S , POWERGRID IN WESTERN REGION	765/400 kV	2242 Hrs on 31.08.2012
<b>19</b>	400 kV bus of BOLANGIR S/S of POWERGRID (LILO OF 400 kV JEYPORE – MERAMUNDALI S/C)	400 kV	2344 Hrs on 31.08.2012

## VOLTAGE PROFILE - AUGUST 2012

Sl. No.	REGION	SUBSTATION	Maximum(kV)	Minimum(kV)
1	ER	FARAKKA	429	414
2		KAHALGAON	436	412
3		TALCHER	428	412
4		BINAGURI	426	400
5		PURNEA	425	398
6		MUZAFFARPUR	425	389
7		JAMSHEDPUR	432	416
8		RENGALI	424	408
9		JEYPORE	438	370
1	NR	NALLAGARH	422	387
2		BHIWADI	434	390
3		BALLABGARH	423	411
4		ALLAHABAD	436	405
5		HISSAR	416	386
6		BAWANA	420	395
7		KANPUR	424	395
8		BASSI	435	393
9		LUCKNOW PG	429	397
10		MOGA	420	388
11		RATANGARH	428	388
1	WR	ASOJ	421	391
2		ITARSI	427	399
3		JETPUR	427	367
4		KARAD	433	405
5		KASOR	422	405
6		BINA	431	390
7		GWALIOR	432	398
8		RAIPUR	432	417
9		JABALPUR	432	404
10		DHULE	436	404

## VOLTAGE PROFILE - AUGUST 2012

Sl. No.	REGION	SUBSTATION	Maximum(kV)	Minimum(kV)
1	SR	SRIPERUMPUDUR	421	383
2		NEYVELI	418	391
3		SALEM	422	387
4		BANGALORE	425	385
5		HOSUR	420	388
6		RAMAGUNDAM	418	404
7		VIJAYAWADA	434	416
8		TIRIVANDRUM	435	382
9		HYDERABAD	431	406
1	NER	MISA	422	397
2		BALIPARA	420	386
3		BONGAIGAON	411	391
4		SALAKATI 220 kV	232	216
5		HAFLONG 132 kV	138	123
6		AIZWAL 132 kV	137	115
7		KUMARGHAT 132 kV	136	123
8		IMPHAL 132 kV	140	120
9		Khlieriat_PG 132 kV	136	125