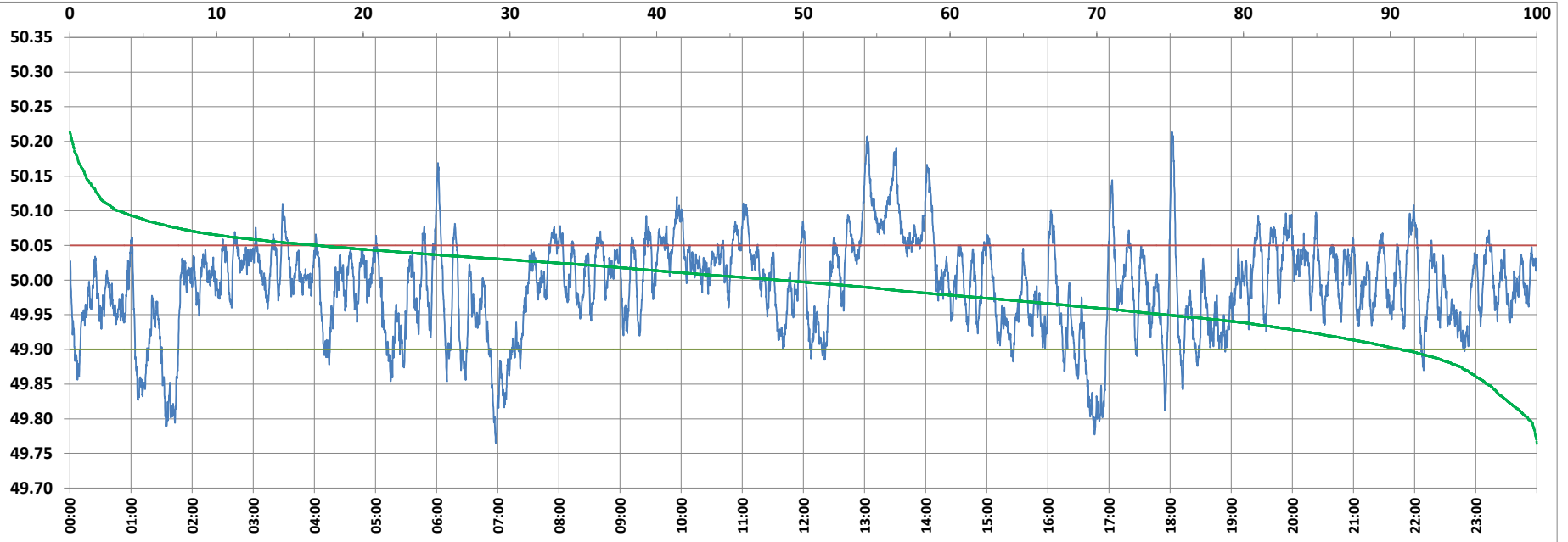


POWER SYSTEM OPERATION CORPORATION LIMITED

NATIONAL LOAD DESPATCH CENTRE, NEW DELHI



Frequency profile for 04-Mar-2022 (Friday)



<49.7	<49.90	<49.97	49.7-49.8	49.8-49.9	49.9-50.0	50.0-50.1	50.1-50.2	49.90-50.05	49.7-50.2	49.97-50.03	50.05-50.1	>50	>50.03	>50.05	>50.2	<49.95	49.95-50.05	49.90-49.95
0.00	9.22	35.32	0.59	8.63	42.34	45.09	3.17	73.81	99.83	35.09	13.62	48.44	29.58	16.97	0.17	25.24	57.79	16.02

Average Frequency : 49.991

Frequency Variation Index : 0.0460

Standard Deviation : 0.0673

Mileage: 45.1

FDI: 26.2

Instantaneous Frequency		
Max	50.214	18:01:50
Min	49.764	6:58:00

15 minute Average Frequency		
Max	50.127	13:15:00
Min	49.825	1:45:00

No. of excursions	
above 50.03 Hz	152
below 49.97 Hz	115
above 50.00 Hz	146
below 50.00 Hz	145

Average time freq per excursion remains	
below 49.97	0:04:25
above 50.03	0:02:48

No. of hours freq outside 49.9-50.05 Hz	
	6:17:10

Source : AGRA 10 Sec. (8640 samples)