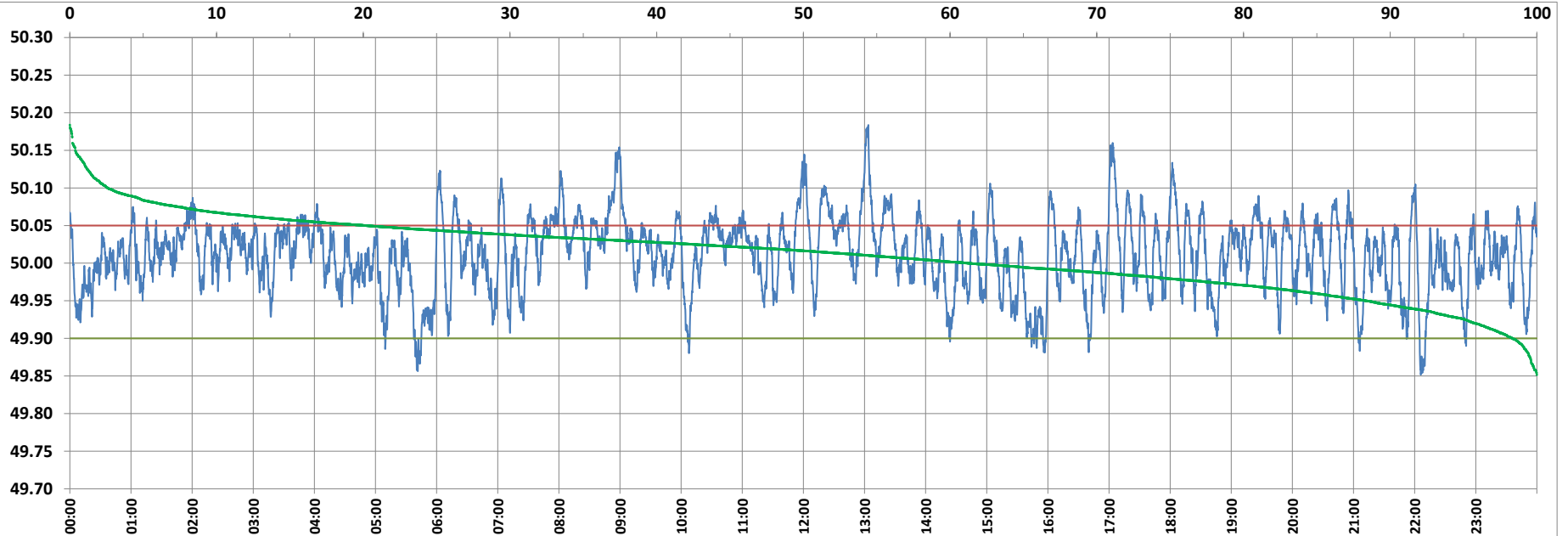


POWER SYSTEM OPERATION CORPORATION LIMITED

NATIONAL LOAD DESPATCH CENTRE, NEW DELHI



Frequency profile for 05-Feb-2022 (Saturday)



<49.7	<49.90	<49.97	49.7-49.8	49.8-49.9	49.9-50.0	50.0-50.1	50.1-50.2	49.90-50.05	49.7-50.2	49.97-50.03	50.05-50.1	>50	>50.03	>50.05	>50.2	<49.95	49.95-50.05	49.90-49.95
0.00	1.67	19.54	0.00	1.67	37.06	58.68	2.59	78.14	100.00	42.72	17.60	61.27	37.74	20.20	0.00	11.64	68.16	9.98

Average Frequency : 50.011

Frequency Variation Index : 0.0252

Standard Deviation : 0.0490

Mileage: 44.2

FDI: 21.9

Instantaneous Frequency		
Max	50.184	13:03:40
Min	49.852	22:06:00

15 minute Average Frequency		
Max	50.094	9:00:00
Min	49.918	16:00:00

No. of excursions	
above 50.03 Hz	216
below 49.97 Hz	121
above 50.00 Hz	180
below 50.00 Hz	179

Average time freq per excursion remains	
below 49.97	0:02:20
above 50.03	0:02:31

No. of hours freq outside 49.9-50.05 Hz	
	5:14:50

Source : AGRA 10 Sec. (8640 samples)