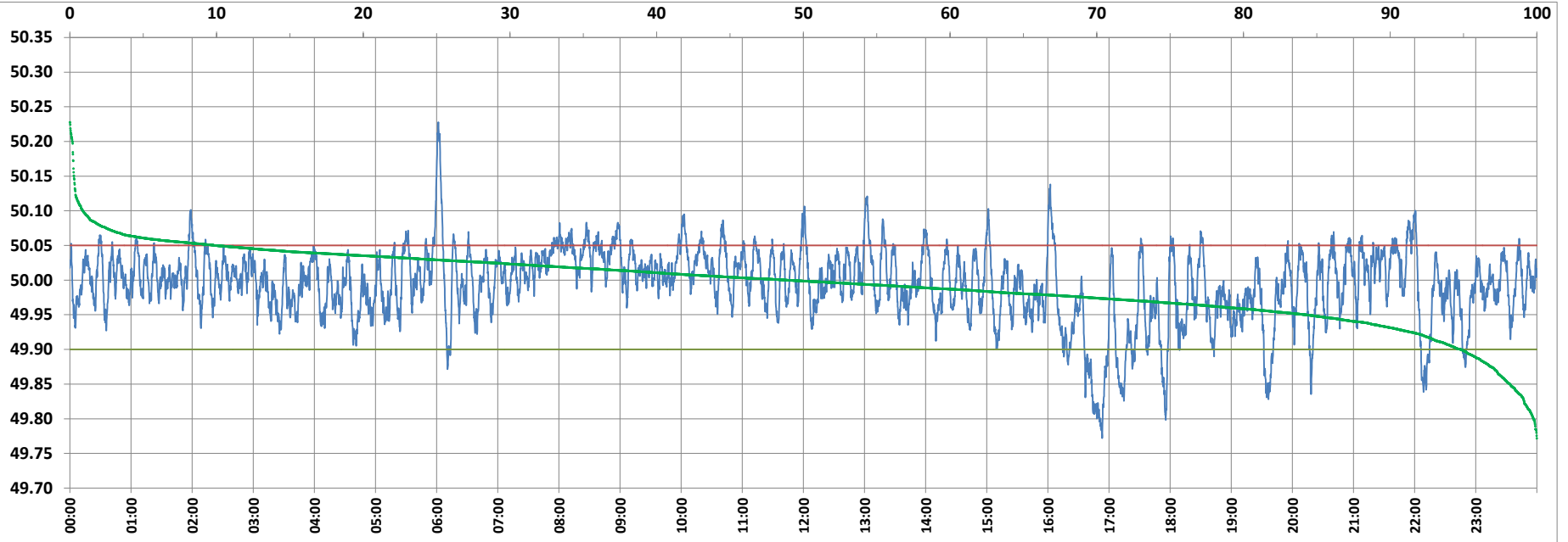


POWER SYSTEM OPERATION CORPORATION LIMITED

NATIONAL LOAD DESPATCH CENTRE, NEW DELHI



Frequency profile for 05-Mar-2022 (Saturday)



<49.7	<49.90	<49.97	49.7-49.8	49.8-49.9	49.9-50.0	50.0-50.1	50.1-50.2	49.90-50.05	49.7-50.2	49.97-50.03	50.05-50.1	>50	>50.03	>50.05	>50.2	<49.95	49.95-50.05	49.90-49.95
0.00	5.17	26.98	0.22	4.95	45.89	48.06	0.71	84.93	99.83	48.68	9.02	48.94	24.34	9.90	0.17	15.72	74.39	10.54

Average Frequency : 49.994

Frequency Variation Index : 0.0272

Standard Deviation : 0.0518

Mileage: 44.4

FDI: 15.1

Instantaneous Frequency		
Max	50.228	6:01:30
Min	49.772	16:53:20

15 minute Average Frequency		
Max	50.054	8:15:00
Min	49.831	17:00:00

No. of excursions	
above 50.03 Hz	171
below 49.97 Hz	152
above 50.00 Hz	209
below 50.00 Hz	208

Average time freq per excursion remains	
below 49.97	0:02:33
above 50.03	0:02:03

No. of hours freq outside 49.9-50.05 Hz	3:37:00
---	---------

Source : FARAKKA 10 Sec. (8640 samples)