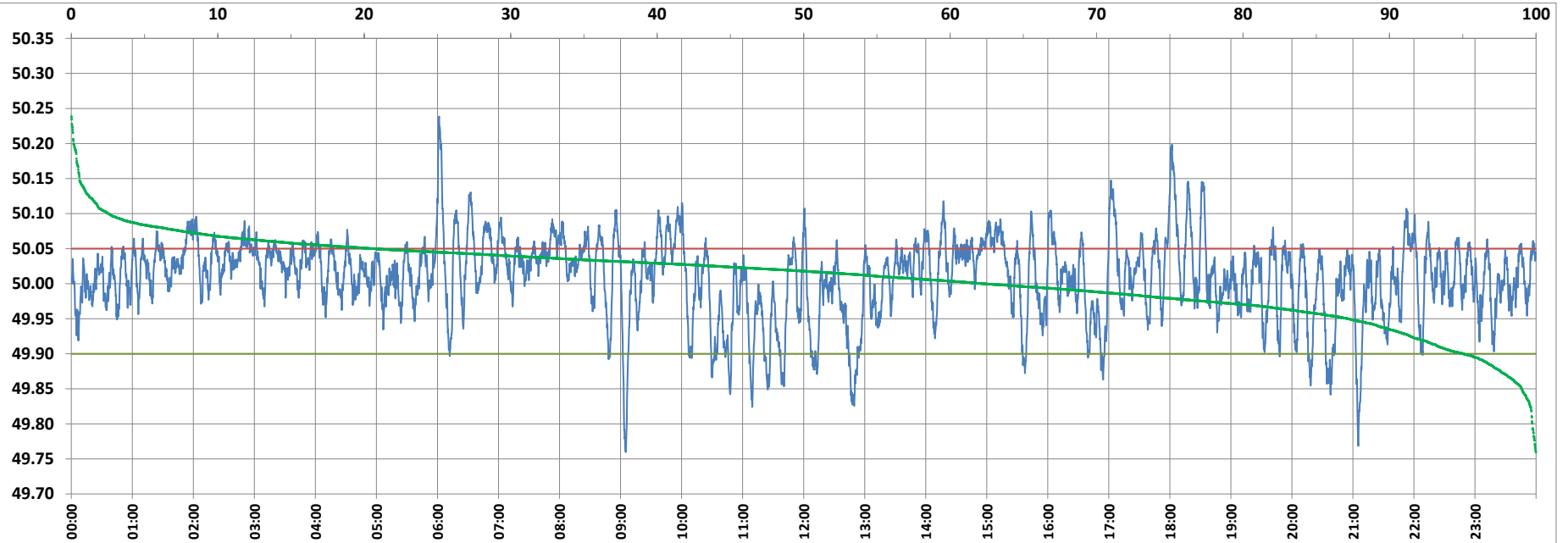


POWER SYSTEM OPERATION CORPORATION LIMITED

NATIONAL LOAD DESPATCH CENTRE, NEW DELHI



Frequency profile for 06-Mar-2022 (Sunday)



<49.7	<49.90	<49.97	49.7-49.8	49.8-49.9	49.9-50.0	50.0-50.1	50.1-50.2	49.90-50.05	49.7-50.2	49.97-50.03	50.05-50.1	>50	>50.03	>50.05	>50.2	<49.95	49.95-50.05	49.90-49.95
0.00	4.97	19.79	0.24	4.72	32.78	59.75	2.36	74.40	99.85	41.18	18.13	62.25	39.03	20.64	0.15	12.86	66.50	7.89

Average Frequency : 50.009

Frequency Variation Index : 0.0321

Standard Deviation : 0.0560

Mileage: 45.3

FDI: 25.6

Instantaneous Frequency

Max	50.239	6:01:30
Min	49.760	9:05:00

15 minute Average Frequency

Max	50.078	18:15:00
Min	49.896	13:00:00

No. of excursions

above 50.03 Hz	213
below 49.97 Hz	122
above 50.00 Hz	172
below 50.00 Hz	172

Average time freq per excursion remains

below 49.97	0:02:20
above 50.03	0:02:38

No. of hours freq outside 49.9-50.05 Hz

6:08:40

Source : AGRA 10 Sec. (8640 samples)