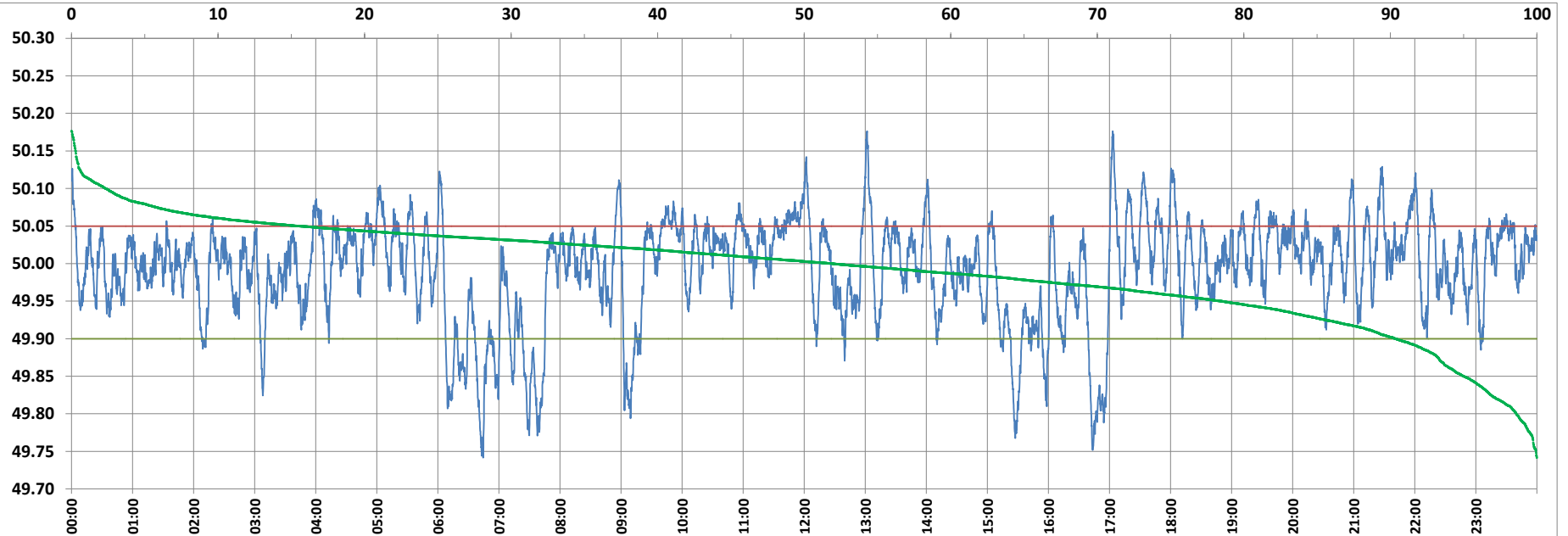


POWER SYSTEM OPERATION CORPORATION LIMITED

NATIONAL LOAD DESPATCH CENTRE, NEW DELHI



Frequency profile for 08-Feb-2022 (Tuesday)



<49.7	<49.90	<49.97	49.7-49.8	49.8-49.9	49.9-50.0	50.0-50.1	50.1-50.2	49.90-50.05	49.7-50.2	49.97-50.03	50.05-50.1	>50	>50.03	>50.05	>50.2	<49.95	49.95-50.05	49.90-49.95
0.00	9.63	30.36	1.40	8.23	38.43	49.62	2.33	74.81	100.00	38.48	13.23	51.94	31.16	15.56	0.00	21.50	62.94	11.88

Average Frequency : 49.991

Frequency Variation Index : 0.0456

Standard Deviation : 0.0669

Mileage: 45.8

FDI: 25.2

Instantaneous Frequency		
Max	50.176	17:03:10
Min	49.742	6:44:20

15 minute Average Frequency		
Max	50.067	12:00:00
Min	49.829	7:45:00

No. of excursions	
above 50.03 Hz	174
below 49.97 Hz	117
above 50.00 Hz	174
below 50.00 Hz	173

Average time freq per excursion remains	
below 49.97	0:03:44
above 50.03	0:02:35

No. of hours freq outside 49.9-50.05 Hz	
	6:02:40

Source : AGRA 10 Sec. (8640 samples)