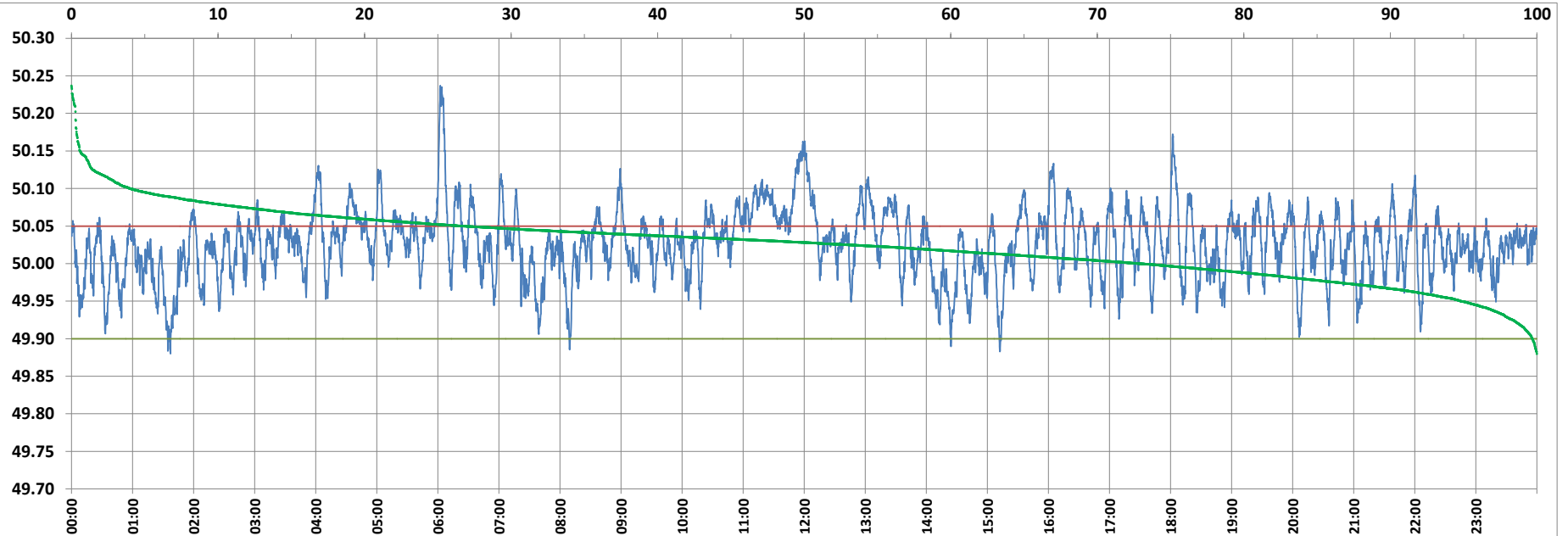


POWER SYSTEM OPERATION CORPORATION LIMITED

NATIONAL LOAD DESPATCH CENTRE, NEW DELHI



Frequency profile for 09-Feb-2022 (Wednesday)



<49.7	<49.90	<49.97	49.7-49.8	49.8-49.9	49.9-50.0	50.0-50.1	50.1-50.2	49.90-50.05	49.7-50.2	49.97-50.03	50.05-50.1	>50	>50.03	>50.05	>50.2	<49.95	49.95-50.05	49.90-49.95
0.00	0.32	11.30	0.00	0.32	26.81	68.85	3.74	72.94	99.72	40.57	22.72	72.87	48.14	26.74	0.28	5.17	68.09	4.85

Average Frequency : 50.025

Frequency Variation Index : 0.0266

Standard Deviation : 0.0451

Mileage: 44.2

FDI: 27.1

Instantaneous Frequency		
Max	50.237	6:02:20
Min	49.880	1:37:10

15 minute Average Frequency		
Max	50.111	12:00:00
Min	49.933	1:45:00

No. of excursions	
above 50.03 Hz	218
below 49.97 Hz	103
above 50.00 Hz	177
below 50.00 Hz	176

Average time freq per excursion remains	
below 49.97	0:01:35
above 50.03	0:03:11

No. of hours freq outside 49.9-50.05 Hz	
	6:29:40

Source : AGRA 10 Sec. (8640 samples)