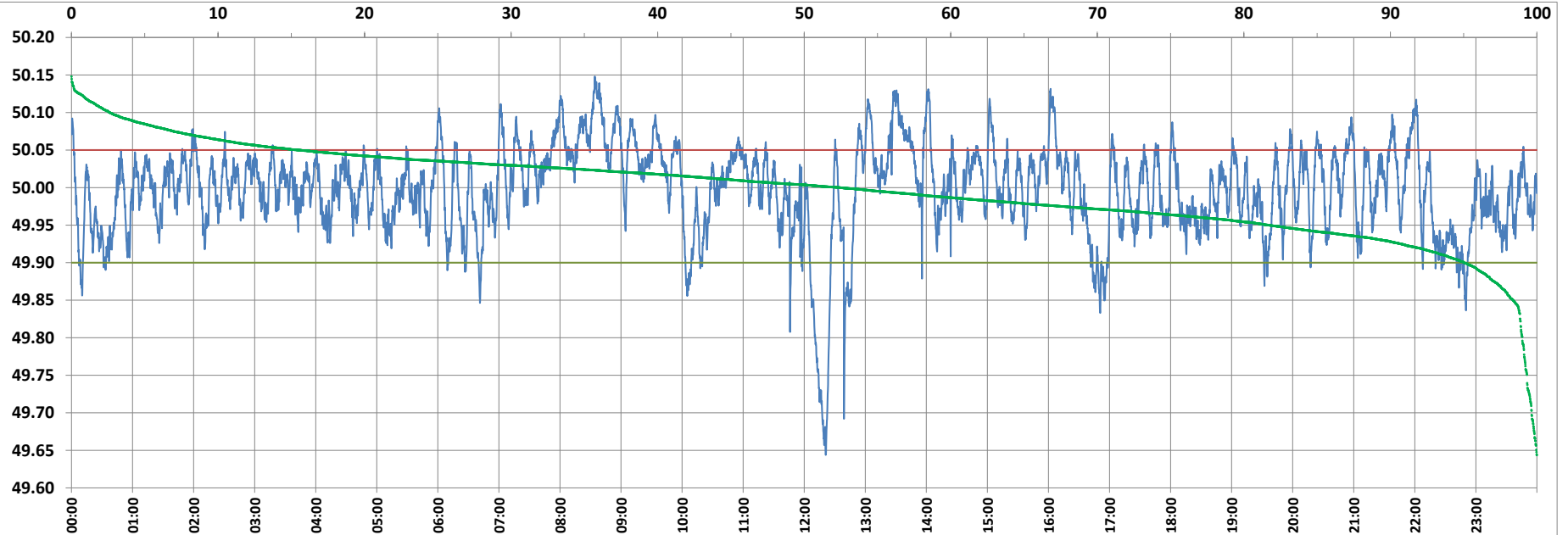


POWER SYSTEM OPERATION CORPORATION LIMITED

NATIONAL LOAD DESPATCH CENTRE, NEW DELHI



Frequency profile for 11-Feb-2022 (Friday)



<49.7	<49.90	<49.97	49.7-49.8	49.8-49.9	49.9-50.0	50.0-50.1	50.1-50.2	49.90-50.05	49.7-50.2	49.97-50.03	50.05-50.1	>50	>50.03	>50.05	>50.2	<49.95	49.95-50.05	49.90-49.95
0.36	4.98	28.83	0.64	3.98	42.55	49.87	2.60	79.50	99.64	41.50	12.92	52.48	29.66	15.52	0.00	18.26	66.22	13.29

Average Frequency : 49.997      Frequency Variation Index : 0.0364      Standard Deviation : 0.0603      Mileage: 47.8      FDI: 20.5

Instantaneous Frequency		
Max	50.148	8:34:10
Min	49.644	12:21:00

15 minute Average Frequency		
Max	50.107	8:45:00
Min	49.787	12:30:00

No. of excursions	
above 50.03 Hz	196
below 49.97 Hz	174
above 50.00 Hz	163
below 50.00 Hz	162

Average time freq per excursion remains	
below 49.97	0:02:23
above 50.03	0:02:11

No. of hours freq outside 49.9-50.05 Hz	
	4:55:10

Source : AGRA 10 Sec. (8640 samples)