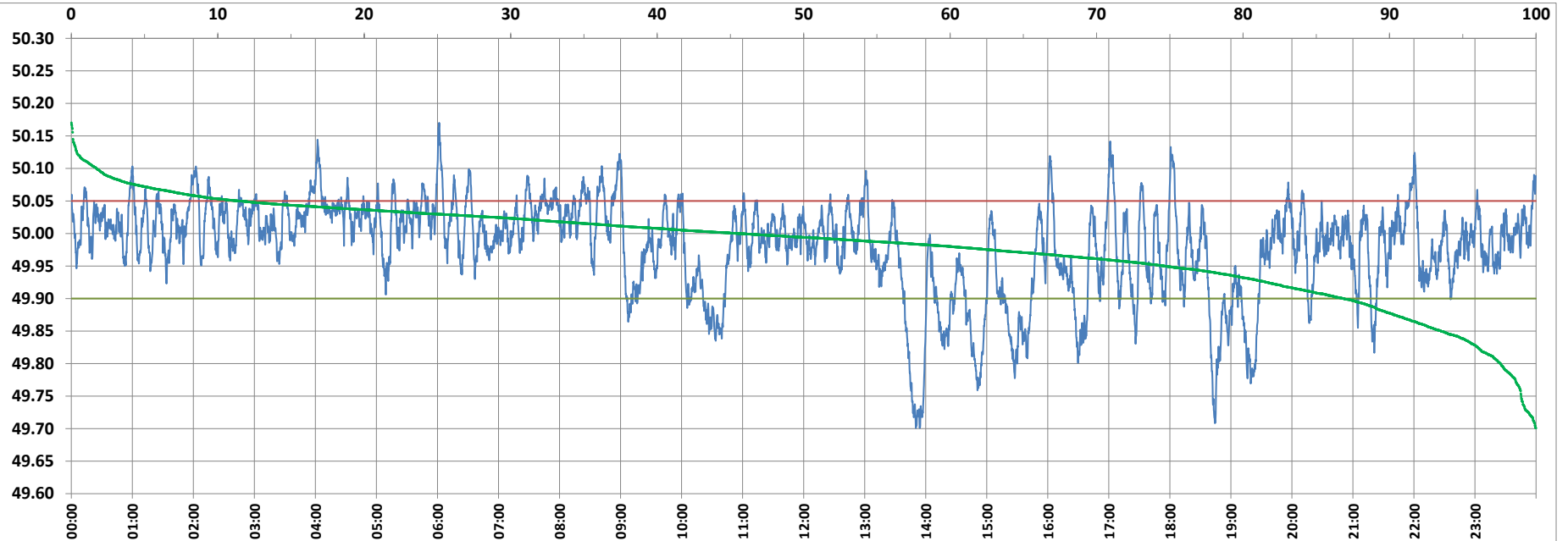


POWER SYSTEM OPERATION CORPORATION LIMITED

NATIONAL LOAD DESPATCH CENTRE, NEW DELHI



Frequency profile for 14-Mar-2022 (Monday)



<49.7	<49.90	<49.97	49.7-49.8	49.8-49.9	49.9-50.0	50.0-50.1	50.1-50.2	49.90-50.05	49.7-50.2	49.97-50.03	50.05-50.1	>50	>50.03	>50.05	>50.2	<49.95	49.95-50.05	49.90-49.95
0.00	13.15	34.62	2.44	10.71	41.32	43.82	1.71	75.44	100.00	40.50	9.70	45.53	24.88	11.41	0.00	25.38	63.21	12.23

Average Frequency : 49.981

Frequency Variation Index : 0.0552

Standard Deviation : 0.0718

Mileage: 45.6

FDI: 24.6

Instantaneous Frequency

Max	50.170	6:01:30
Min	49.701	13:50:10

15 minute Average Frequency

Max	50.066	4:15:00
Min	49.739	14:00:00

No. of excursions

above 50.03 Hz	164
below 49.97 Hz	121
above 50.00 Hz	196
below 50.00 Hz	195

Average time freq per excursion remains

below 49.97	0:04:07
above 50.03	0:02:11

No. of hours freq outside 49.9-50.05 Hz

5:53:40

Source : AGRA 10 Sec. (8640 samples)