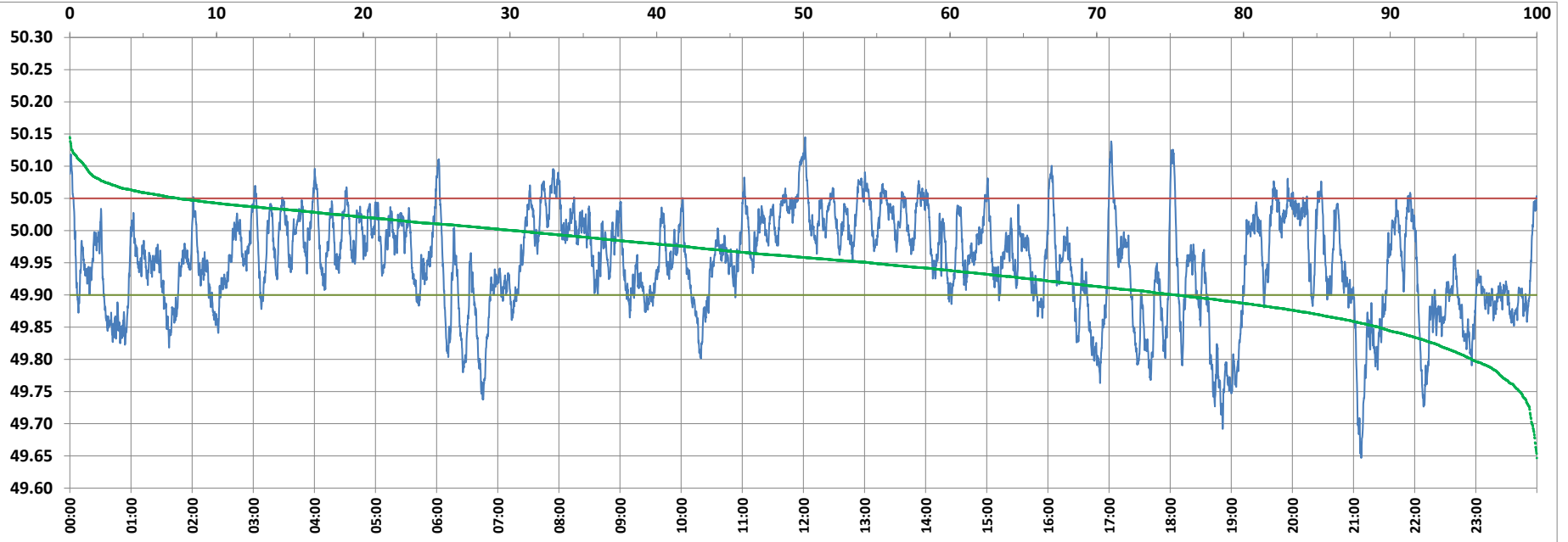


POWER SYSTEM OPERATION CORPORATION LIMITED

NATIONAL LOAD DESPATCH CENTRE, NEW DELHI



Frequency profile for 15-Mar-2022 (Tuesday)



<49.7	<49.90	<49.97	49.7-49.8	49.8-49.9	49.9-50.0	50.0-50.1	50.1-50.2	49.90-50.05	49.7-50.2	49.97-50.03	50.05-50.1	>50	>50.03	>50.05	>50.2	<49.95	49.95-50.05	49.90-49.95
0.34	24.56	55.75	4.11	20.12	45.16	29.21	1.06	68.03	99.66	28.22	6.34	30.28	16.03	7.41	0.00	45.44	47.15	20.88

Average Frequency : 49.951

Frequency Variation Index : 0.0852

Standard Deviation : 0.0781

Mileage: 46.0

FDI: 32.0

Instantaneous Frequency		
Max	50.145	12:01:40
Min	49.647	21:07:30

15 minute Average Frequency		
Max	50.061	12:00:00
Min	49.763	19:00:00

No. of excursions	
above 50.03 Hz	102
below 49.97 Hz	112
above 50.00 Hz	118
below 50.00 Hz	117

Average time freq per excursion remains	
below 49.97	0:07:10
above 50.03	0:02:16

No. of hours freq outside 49.9-50.05 Hz	
	7:40:20

Source : AGRA 10 Sec. (8640 samples)