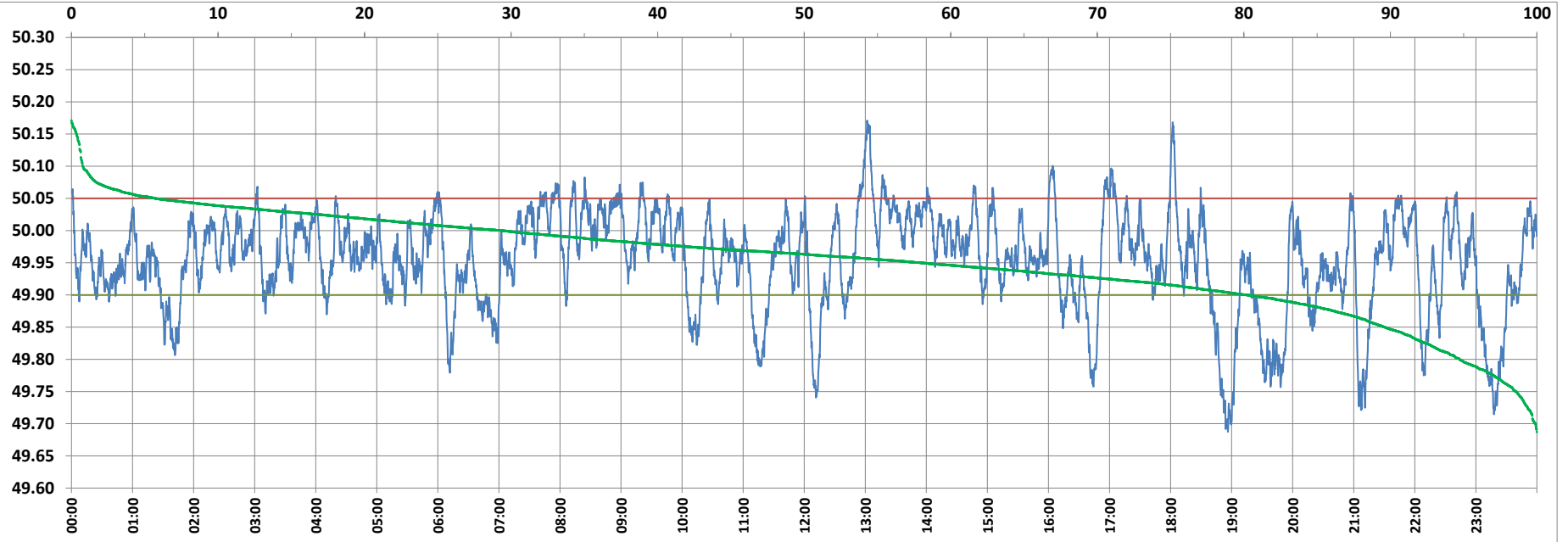


POWER SYSTEM OPERATION CORPORATION LIMITED

NATIONAL LOAD DESPATCH CENTRE, NEW DELHI



Frequency profile for 16-Mar-2022 (Wednesday)



<49.7	<49.90	<49.97	49.7-49.8	49.8-49.9	49.9-50.0	50.0-50.1	50.1-50.2	49.90-50.05	49.7-50.2	49.97-50.03	50.05-50.1	>50	>50.03	>50.05	>50.2	<49.95	49.95-50.05	49.90-49.95
0.09	19.76	54.81	5.17	14.49	50.86	28.61	0.78	74.55	99.91	31.03	4.92	29.39	14.16	5.69	0.00	41.99	52.31	22.23

Average Frequency : 49.954

Frequency Variation Index : 0.0793

Standard Deviation : 0.0760

Mileage: 45.3

FDI: 25.5

Instantaneous Frequency		
Max	50.171	13:01:50
Min	49.687	18:56:20

15 minute Average Frequency		
Max	50.068	13:15:00
Min	49.747	19:00:00

No. of excursions	
above 50.03 Hz	102
below 49.97 Hz	153
above 50.00 Hz	126
below 50.00 Hz	125

Average time freq per excursion remains	
below 49.97	0:05:10
above 50.03	0:02:00

No. of hours freq outside 49.9-50.05 Hz	
	6:06:30

Source : AGRA 10 Sec. (8640 samples)