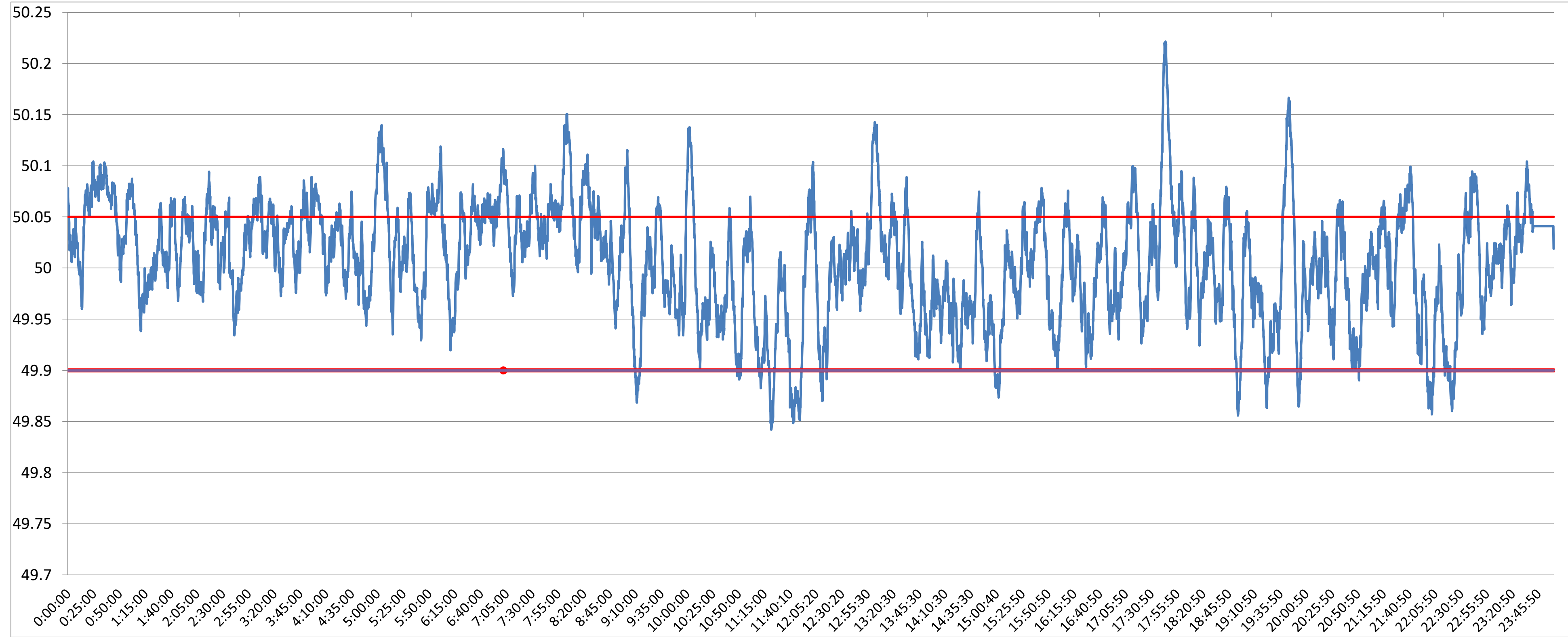




POWER SYSTEM OPERATION CORPORATION LIMITED
NATIONAL LOAD DESPATCH CENTRE NEW DELHI

SLPR4:Frequency

National Grid Frequency Profile for 16-May-17



<49.2	<49.7	<49.90	<49.97	49.7-49.8	49.8-49.9	49.9-50.0	50.0-50.1	50.1-50.2	49.90-50.05	49.7-50.2	49.97-50.03	50.05-50.1	>50	>50.03	>50.05	>50.2
0	0.00	3.92	25.27	0.00	3.92	38.96	54.03	2.92	72.88	99.83	37.66	20.23	57.05	37.07	23.19	0.17

Average Frequency		50.01	Frequency Variation Index :		0.032	Standard Deviation :		0.056
Instantaneous Frequency			15 minute average Frequency			No. of excursion above 50.03 Hz		158
Max	50.22	17:44:30	Max	50.081	0:45:00	No. of excursion below 49.97 Hz		119
Min	49.84	11:21:40	Min	49.918	11:30:00	No. of excursion above 50.00 Hz		146
Average time freq remains below 49.97 per excursion		0:03:03	Average time frequency remains above 50.03 per excursion		0:03:23	No. of excursion below 50.00 Hz		147