

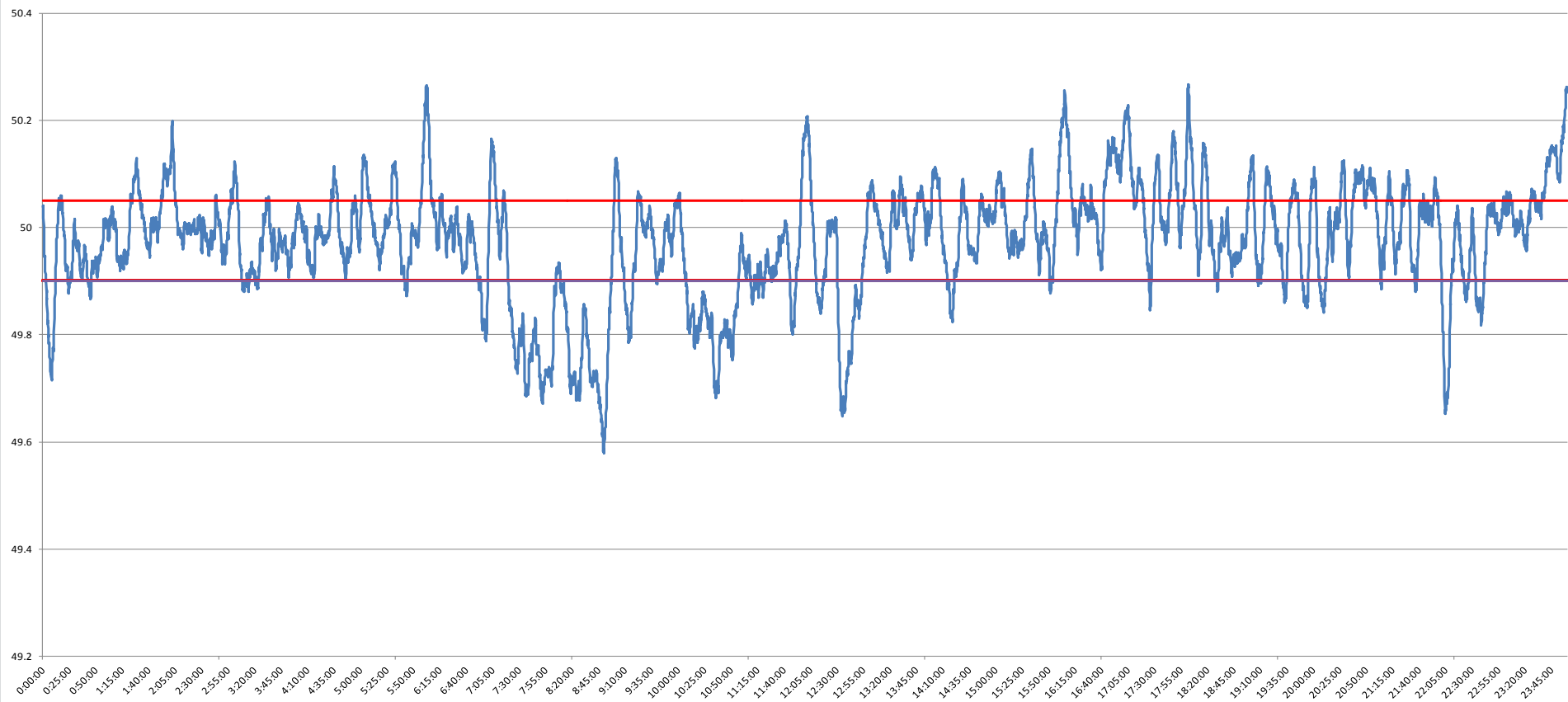


POWER SYSTEM OPERATION CORPORATION LIMITED
NATIONAL LOAD DESPATCH CENTRE NEW DELHI

NTPC-VINDHYACHAL:Frequency

National Grid Frequency Profile for

18-Jan-15



<49.2	<49.7	<49.90	<49.97	49.7-49.8	49.8-49.9	49.9-50.0	50.0-50.1	50.1-50.2	49.90-50.05	49.7-50.2	49.97-50.03	50.05-50.1	>50	>50.03	>50.05	>50.2
0	1.94	19.46	43.16	5.95	11.56	36.97	34.49	7.86	58.96	96.83	27.44	12.59	43.53	29.40	21.59	1.23

Average Frequency		49.97	Frequency Variation Index :		0.123	Standard Deviation :		0.108
Instantaneous Frequency			15 minute average Frequency			No. of excursion above 50.03 Hz		106
MAX	50.27	18:02:10	Max	50.155	0:00:00	No. of excursion below 49.97 Hz		100
Min	49.58	8:49:50	Min	49.724	8:30:00	No. of excursion above 50.00 Hz		120
Average time freq remains below 49.97 per excursion		0:06:13	Average time frequency remains above 50.03 per excursion		0:04:00	No. of excursion below 50.00 Hz		120