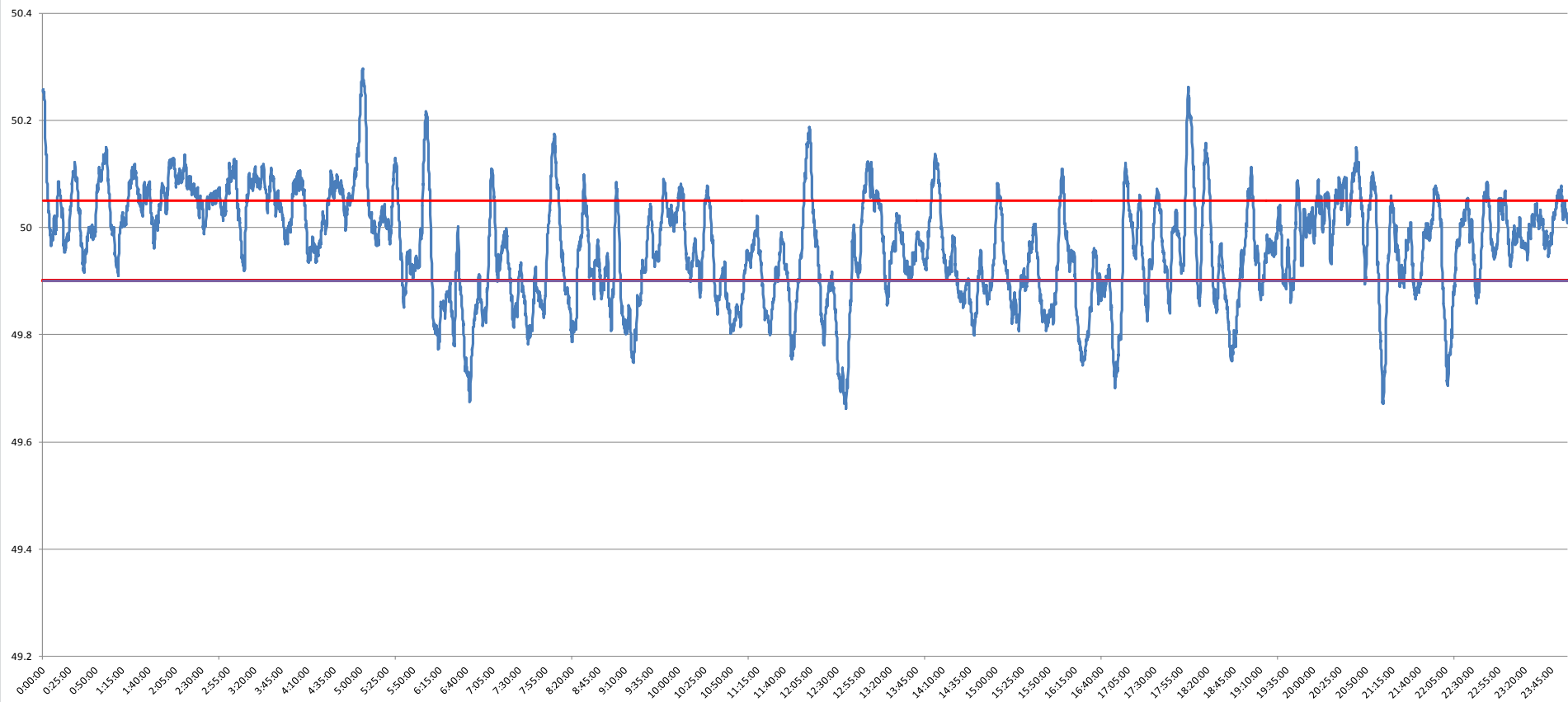




**POWER SYSTEM OPERATION CORPORATION LIMITED**  
NATIONAL LOAD DESPATCH CENTRE NEW DELHI

NTPC-VINDHYACHAL:Frequency

National Grid Frequency Profile for 19-Jan-15



<49.2	<49.7	<49.90	<49.97	49.7-49.8	49.8-49.9	49.9-50.0	50.0-50.1	50.1-50.2	49.90-50.05	49.7-50.2	49.97-50.03	50.05-50.1	>50	>50.03	>50.05	>50.2
0	0.49	25.52	49.31	4.49	20.54	34.49	33.26	5.81	51.90	98.60	21.27	15.89	39.97	29.42	22.58	0.91

<b>Average Frequency</b>		<b>49.97</b>	<b>Frequency Variation Index :</b>		<b>0.110</b>	<b>Standard Deviation :</b>		<b>0.099</b>	
<b>Instantaneous Frequency</b>			<b>15 minute average Frequency</b>			<b>No. of excursion above 50.03 Hz</b>		<b>83</b>	
<b>MAX</b>	<b>50.3</b>	<b>5:02:10</b>	<b>Max</b>	<b>50.114</b>	<b>5:15:00</b>	<b>No. of excursion below 49.97 Hz</b>		<b>108</b>	
<b>Min</b>	<b>49.66</b>	<b>12:38:40</b>	<b>Min</b>	<b>49.750</b>	<b>12:45:00</b>	<b>No. of excursion above 50.00 Hz</b>		<b>97</b>	
<b>No. of excursion below 50.00 Hz</b>		<b>95</b>		<b>Average time freq remains below 49.97 per excursion</b>		<b>0:06:34</b>	<b>Average time frequency remains above 50.03 per excursion</b>		<b>0:05:06</b>