

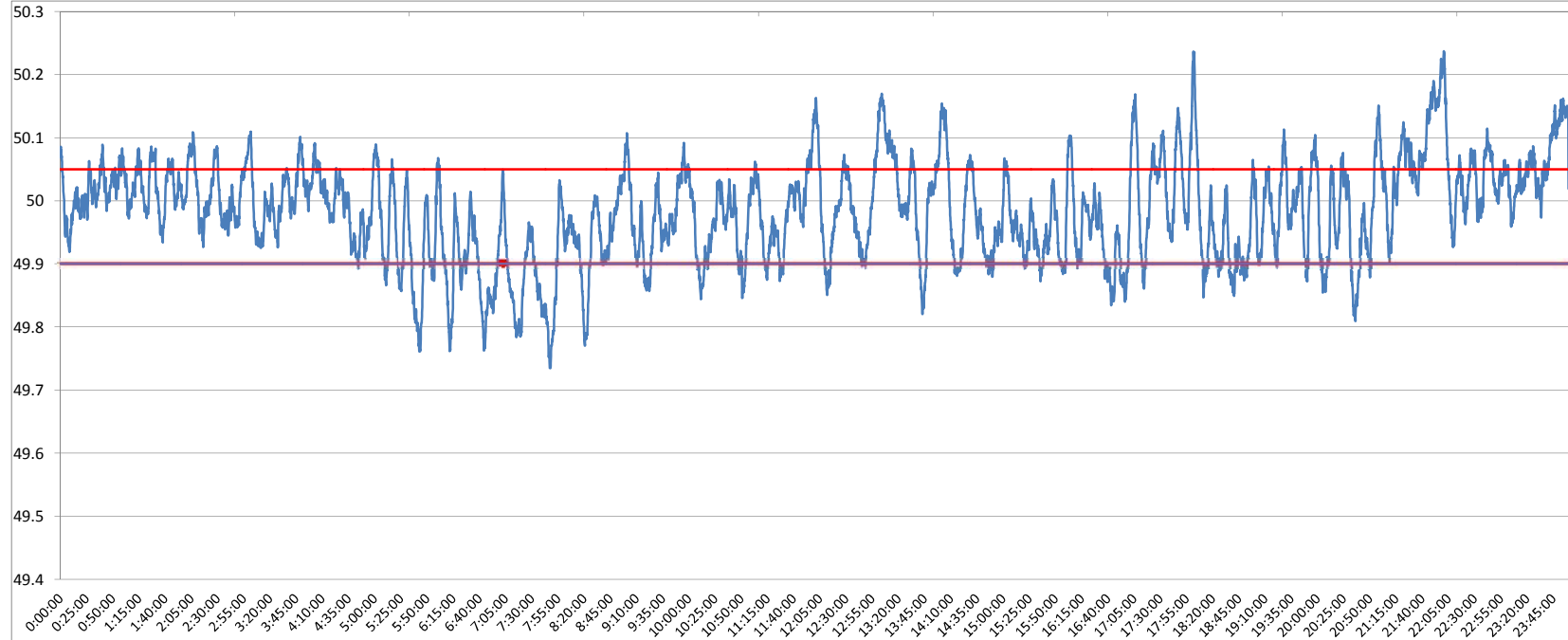


**POWER SYSTEM OPERATION CORPORATION LIMITED**  
NATIONAL LOAD DESPATCH CENTRE NEW DELHI

HISSAR:Frequency

National Grid Frequency Profile for

19-Jan-16



<49.2	<49.7	<49.90	<49.97	49.7-49.8	49.8-49.9	49.9-50.0	50.0-50.1	50.1-50.2	49.90-50.05	49.7-50.2	49.97-50.03	50.05-50.1	>50	>50.03	>50.05	>50.2
0	0.00	15.54	42.49	1.57	13.97	41.42	37.27	5.37	65.16	99.61	29.47	13.56	42.99	28.04	19.29	0.39

<b>Average Frequency</b>		<b>49.98</b>	<b>Frequency Variation Index :</b>		<b>0.065</b>	<b>Standard Deviation :</b>		<b>0.079</b>
<b>Instantaneous Frequency</b>			<b>15 minute average Frequency</b>			<b>No. of excursion above 50.03 Hz</b>		<b>110</b>
<b>Max</b>	<b>50.24</b>	<b>22:00:50</b>	<b>Max</b>	<b>50.166</b>	<b>22:00:00</b>	<b>No. of excursion below 49.97 Hz</b>		<b>119</b>
<b>Min</b>	<b>49.73</b>	<b>7:47:50</b>	<b>Min</b>	<b>49.855</b>	<b>7:00:00</b>	<b>No. of excursion above 50.00 Hz</b>		<b>119</b>
<b>Average time freq remains below 49.97 per excursion</b>		<b>0:05:08</b>	<b>Average time frequency remains above 50.03 per excursion</b>		<b>0:03:40</b>	<b>No. of excursion below 50.00 Hz</b>		<b>116</b>