

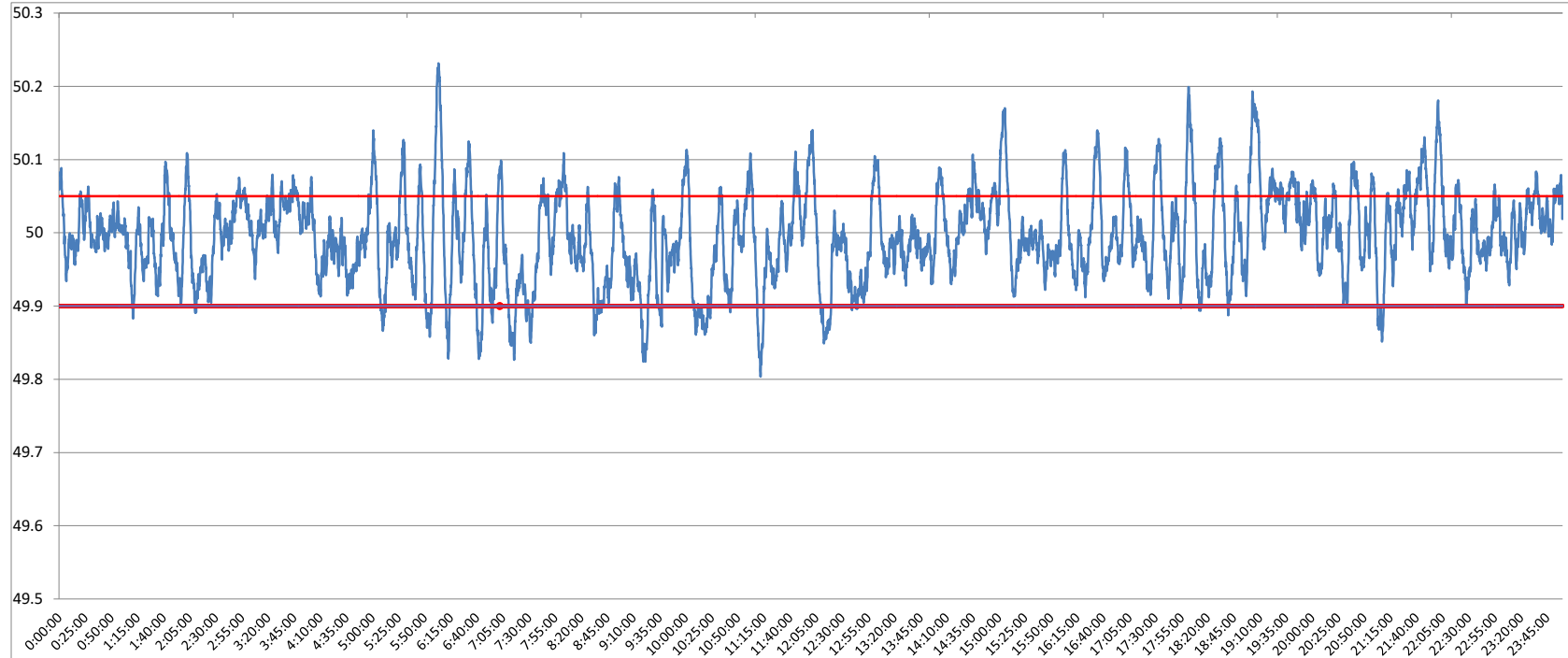


POWER SYSTEM OPERATION CORPORATION LIMITED
NATIONAL LOAD DESPATCH CENTRE NEW DELHI

SLPR4:Frequency

National Grid Frequency Profile for

20-Jan-17



<49.2	<49.7	<49.90	<49.97	49.7-49.8	49.8-49.9	49.9-50.0	50.0-50.1	50.1-50.2	49.90-50.05	49.7-50.2	49.97-50.03	50.05-50.1	>50	>50.03	>50.05	>50.2
0	0.00	6.38	33.61	0.00	6.38	48.30	40.74	4.39	74.39	99.80	37.84	14.76	45.20	28.55	19.24	0.20

Average Frequency		50.00	Frequency Variation Index :		0.039	Standard Deviation :		0.062			
Instantaneous Frequency				15 minute average Frequency				No. of excursion above 50.03 Hz		128	
Max	50.23	6:03:20		Max	50.099	19:15:00		No. of excursion below 49.97 Hz	137		
Min	49.80	11:11:50		Min	49.910	8:45:00		No. of excursion above 50.00 Hz	157		
Average time freq remains below 49.97 per excursion				0:03:32	Average time frequency remains above 50.03 per excursion				0:03:13	No. of excursion above 50.00 Hz	154