

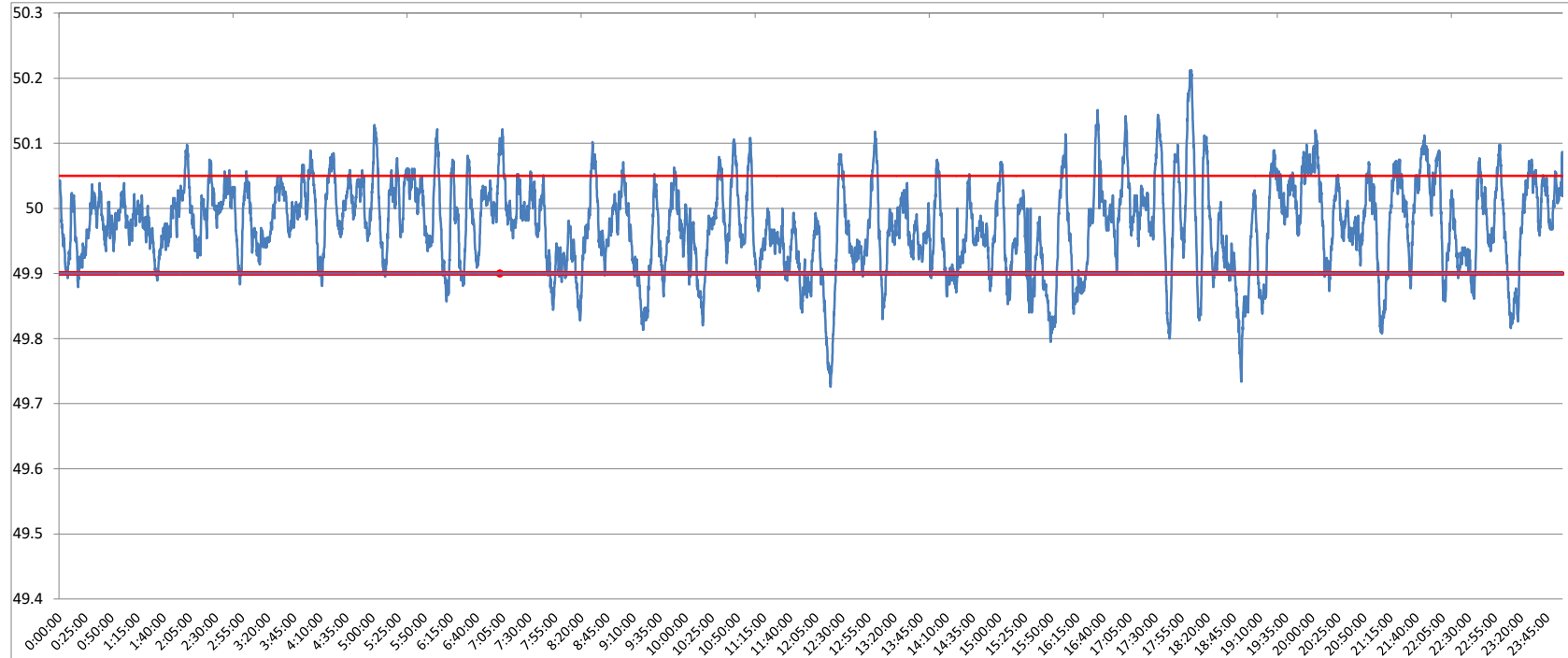


POWER SYSTEM OPERATION CORPORATION LIMITED
NATIONAL LOAD DESPATCH CENTRE NEW DELHI

MEERUT:Frequency

National Grid Frequency Profile for

20-Mar-17



<49.2	<49.7	<49.90	<49.97	49.7-49.8	49.8-49.9	49.9-50.0	50.0-50.1	50.1-50.2	49.90-50.05	49.7-50.2	49.97-50.03	50.05-50.1	>50	>50.03	>50.05	>50.2
0	0.00	14.13	45.27	0.64	13.50	48.33	35.37	2.05	73.09	99.88	33.66	10.79	36.00	21.08	12.78	0.12

Average Frequency		49.97	Frequency Variation Index :		0.052	Standard Deviation :		0.068	
Instantaneous Frequency			15 minute average Frequency			No. of excursion above 50.03 Hz		119	
Max	50.21	18:03:10	Max	50.059	22:00:00	No. of excursion below 49.97 Hz		113	
Min	49.73	12:18:50	Min	49.841	19:00:00	No. of excursion above 50.00 Hz		113	
Average time freq remains below 49.97 per excursion			0:05:46	Average time frequency remains above 50.03 per excursion		0:02:33	No. of excursion below 50.00 Hz		108