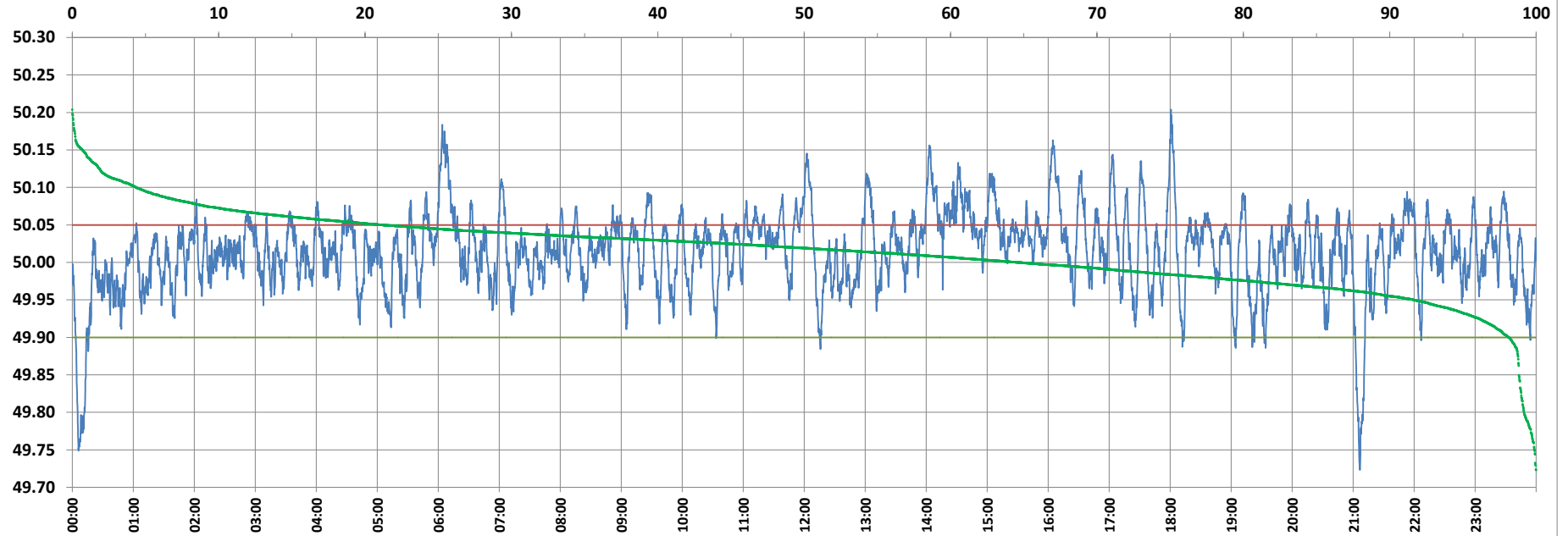


POWER SYSTEM OPERATION CORPORATION LIMITED

NATIONAL LOAD DESPATCH CENTRE, NEW DELHI



Frequency profile for 23-Jan-2022 (Sunday)



<49.7	<49.90	<49.97	49.7-49.8	49.8-49.9	49.9-50.0	50.0-50.1	50.1-50.2	49.90-50.05	49.7-50.2	49.97-50.03	50.05-50.1	>50	>50.03	>50.05	>50.2	<49.95	49.95-50.05	49.90-49.95
0.00	1.88	16.71	0.82	1.05	33.50	60.27	4.35	76.92	99.99	43.74	16.84	64.63	39.55	21.20	0.01	8.34	70.45	6.47

Average Frequency : 50.015

Frequency Variation Index : 0.0301

Standard Deviation : 0.0530

Mileage: 47.6

FDI: 23.1

Instantaneous Frequency		
Max	50.204	18:00:40
Min	49.723	21:06:30

15 minute Average Frequency		
Max	50.120	6:15:00
Min	49.843	0:15:00

No. of excursions	
above 50.03 Hz	232
below 49.97 Hz	138
above 50.00 Hz	186
below 50.00 Hz	186

Average time freq per excursion remains	
below 49.97	0:01:45
above 50.03	0:02:27

No. of hours freq outside 49.9-50.05 Hz	
	5:32:20

Source : BARH 10 Sec. (8640 samples)