

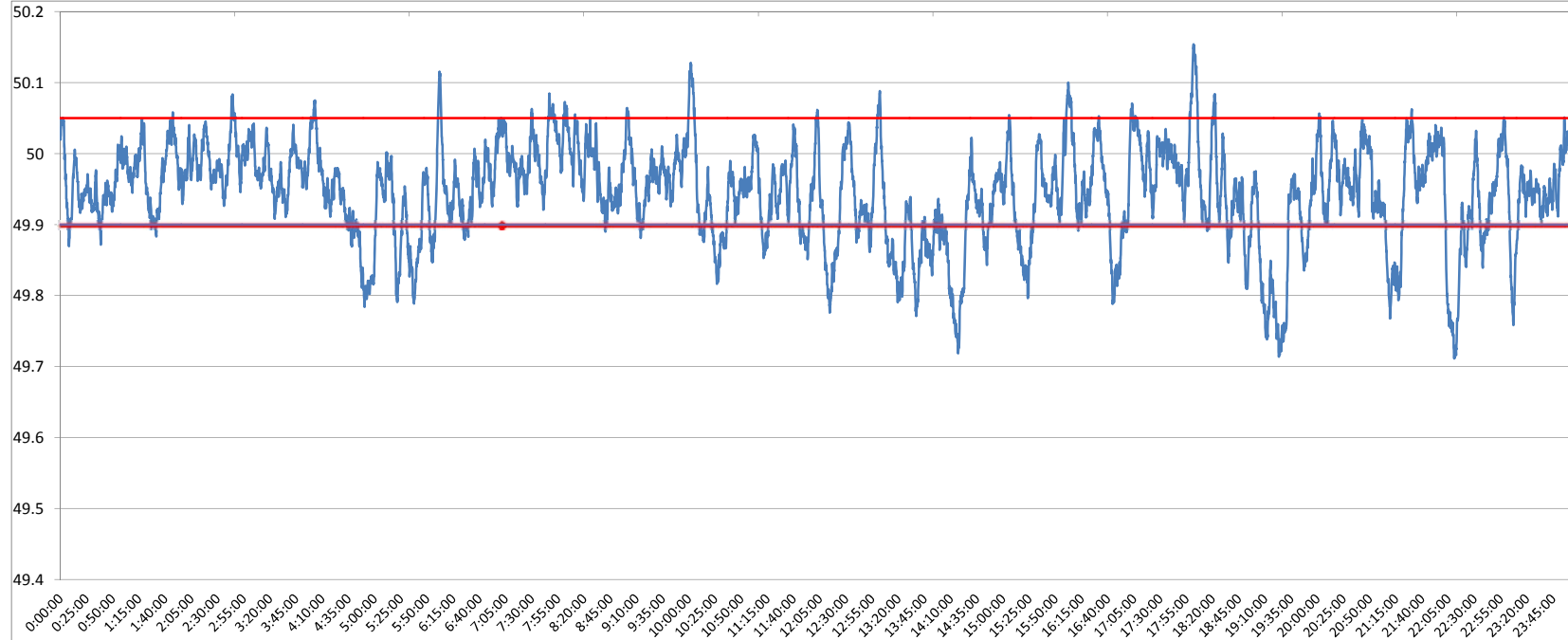


POWER SYSTEM OPERATION CORPORATION LIMITED
NATIONAL LOAD DESPATCH CENTRE NEW DELHI

NTPC-VINDHYACHAL:Frequency

National Grid Frequency Profile for

24-Aug-15



<49.2	<49.7	<49.90	<49.97	49.7-49.8	49.8-49.9	49.9-50.0	50.0-50.1	50.1-50.2	49.90-50.05	49.7-50.2	49.97-50.03	50.05-50.1	>50	>50.03	>50.05	>50.2
0	0.00	22.41	62.72	4.16	18.25	56.57	20.42	0.60	74.09	100.00	28.69	2.94	20.94	8.59	3.51	0.00

Average Frequency		49.94	Frequency Variation Index :		0.080	Standard Deviation :		0.070
Instantaneous Frequency			15 minute average Frequency			No. of excursion above 50.03 Hz		78
Max	50.15	18:02:00	Max	50.032	8:00:00	No. of excursion below 49.97 Hz		159
Min	49.71	22:10:50	Min	49.765	19:30:00	No. of excursion above 50.00 Hz		105
Average time freq remains below 49.97 per excursion		0:05:41	Average time frequency remains above 50.03 per excursion		0:01:35	No. of excursion below 50.00 Hz		103