

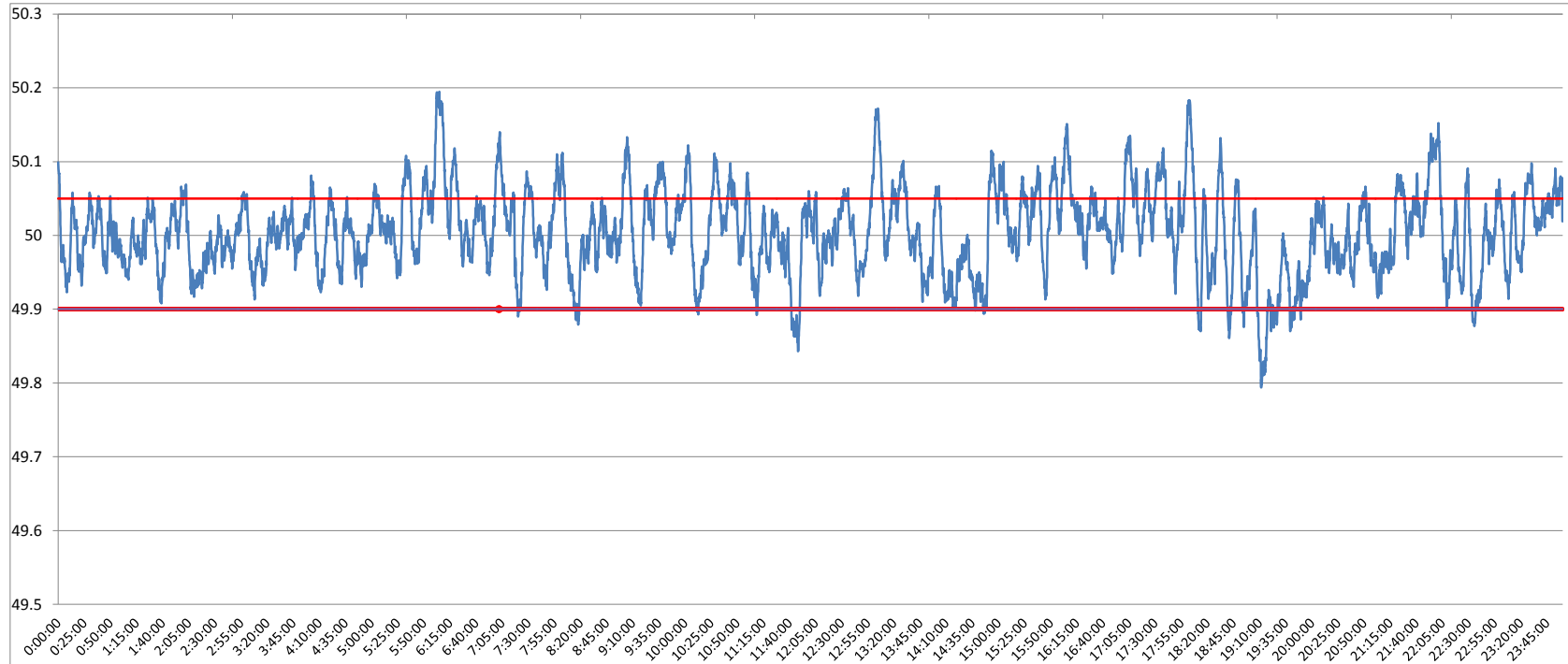


POWER SYSTEM OPERATION CORPORATION LIMITED
NATIONAL LOAD DESPATCH CENTRE NEW DELHI

SARUSUJAI:Frequency

National Grid Frequency Profile for

27-Aug-16



<49.2	<49.7	<49.90	<49.97	49.7-49.8	49.8-49.9	49.9-50.0	50.0-50.1	50.1-50.2	49.90-50.05	49.7-50.2	49.97-50.03	50.05-50.1	>50	>50.03	>50.05	>50.2
0	0.00	3.21	27.49	0.02	3.18	43.02	49.27	4.50	76.71	100.00	40.84	16.18	52.19	31.67	20.08	0.00

Average Frequency		50.00	Frequency Variation Index :		0.033	Standard Deviation :		0.057
Instantaneous Frequency			15 minute average Frequency			No. of excursion above 50.03 Hz		111
Max	50.2	6:04:40	Max	50.115	6:15:00	No. of excursion below 49.97 Hz		124
Min	49.79	19:11:20	Min	49.893	19:30:00	No. of excursion above 50.00 Hz		98
						No. of excursion below 50.00 Hz		93
Average time freq remains below 49.97 per excursion		0:03:12	Average time frequency remains above 50.03 per excursion		0:04:06			