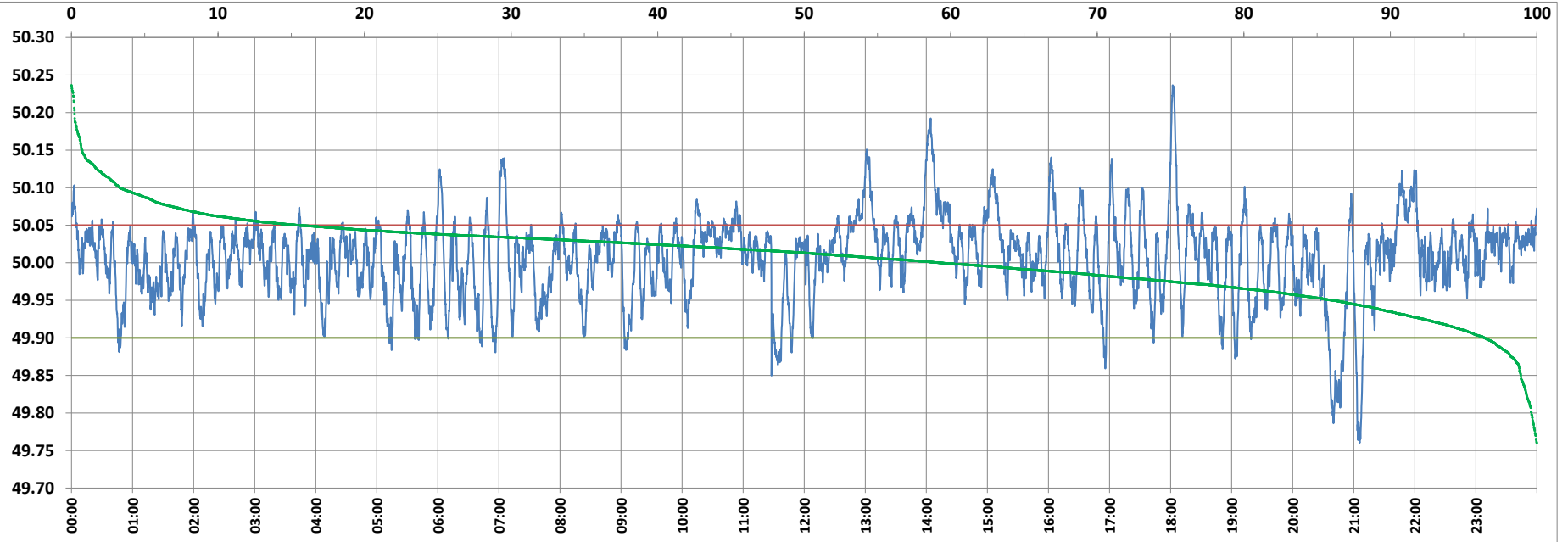


POWER SYSTEM OPERATION CORPORATION LIMITED

NATIONAL LOAD DESPATCH CENTRE, NEW DELHI



Frequency profile for 30-Jan-2022 (Sunday)



<49.7	<49.90	<49.97	49.7-49.8	49.8-49.9	49.9-50.0	50.0-50.1	50.1-50.2	49.90-50.05	49.7-50.2	49.97-50.03	50.05-50.1	>50	>50.03	>50.05	>50.2	<49.95	49.95-50.05	49.90-49.95
0.00	3.58	22.05	0.37	3.21	37.13	55.97	3.11	80.91	99.79	43.88	12.19	59.29	34.07	15.51	0.21	13.90	70.59	10.32

Average Frequency : 50.006

Frequency Variation Index : 0.0307

Standard Deviation : 0.0551

Mileage: 48.0

FDI: 19.1

Instantaneous Frequency		
Max	50.236	18:02:00
Min	49.760	21:05:40

15 minute Average Frequency		
Max	50.123	14:15:00
Min	49.870	20:45:00

No. of excursions	
above 50.03 Hz	242
below 49.97 Hz	141
above 50.00 Hz	191
below 50.00 Hz	190

Average time freq per excursion remains	
below 49.97	0:02:15
above 50.03	0:02:02

No. of hours freq outside 49.9-50.05 Hz	
	4:34:50

Source : AGRA 10 Sec. (8640 samples)