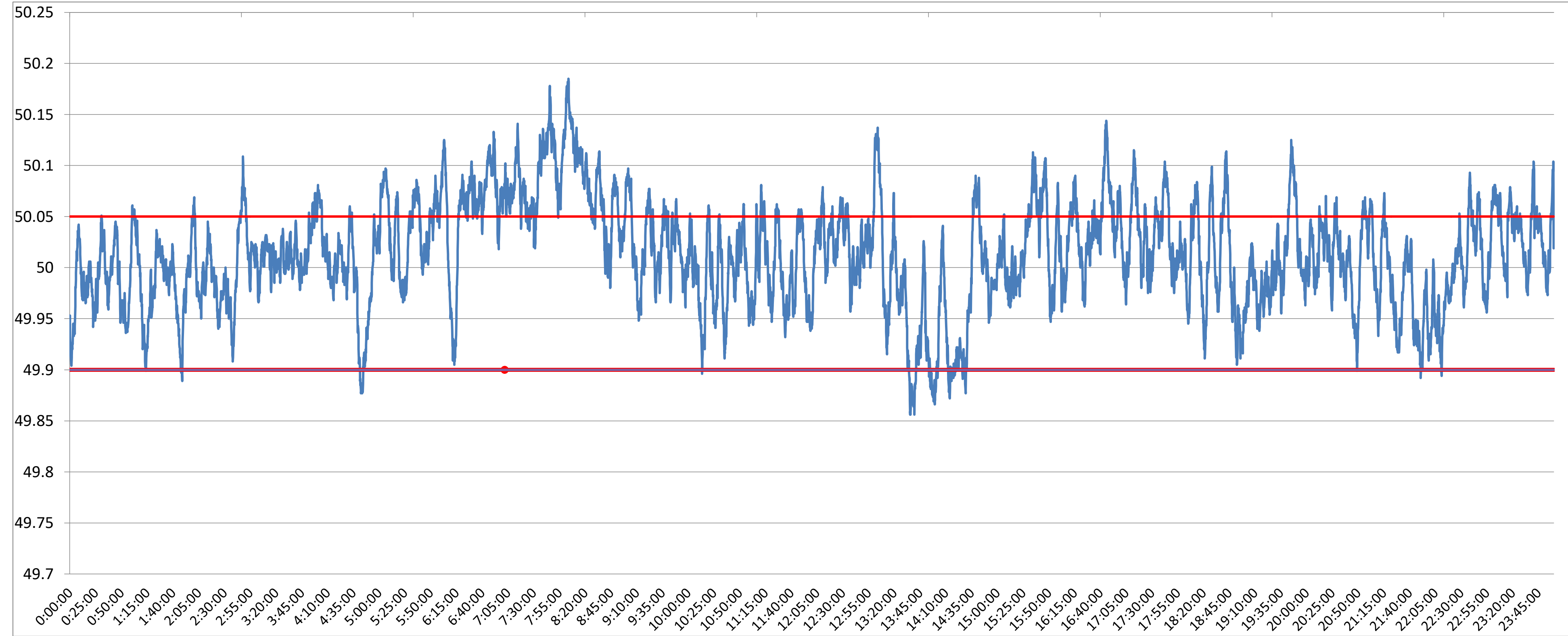




POWER SYSTEM OPERATION CORPORATION LIMITED
NATIONAL LOAD DESPATCH CENTRE NEW DELHI

400KV KALWA:Frequency

National Grid Frequency Profile for 31-May-17



<49.2	<49.7	<49.90	<49.97	49.7-49.8	49.8-49.9	49.9-50.0	50.0-50.1	50.1-50.2	49.90-50.05	49.7-50.2	49.97-50.03	50.05-50.1	>50	>50.03	>50.05	>50.2
0	0.00	1.81	19.05	0.00	1.81	37.19	56.18	4.83	74.04	100.00	43.94	20.16	59.41	37.01	24.16	0.00

Average Frequency		50.01	Frequency Variation Index :		0.029	Standard Deviation :		0.052
Instantaneous Frequency			15 minute average Frequency			No. of excursion above 50.03 Hz		122
Max	50.19	8:03:50	Max	50.136	8:15:00	No. of excursion below 49.97 Hz		99
Min	49.86	13:35:20	Min	49.906	14:30:00	No. of excursion above 50.00 Hz		136
Average time freq remains below 49.97 per excursion		0:02:46	Average time frequency remains above 50.03 per excursion		0:04:22	No. of excursion below 50.00 Hz		135