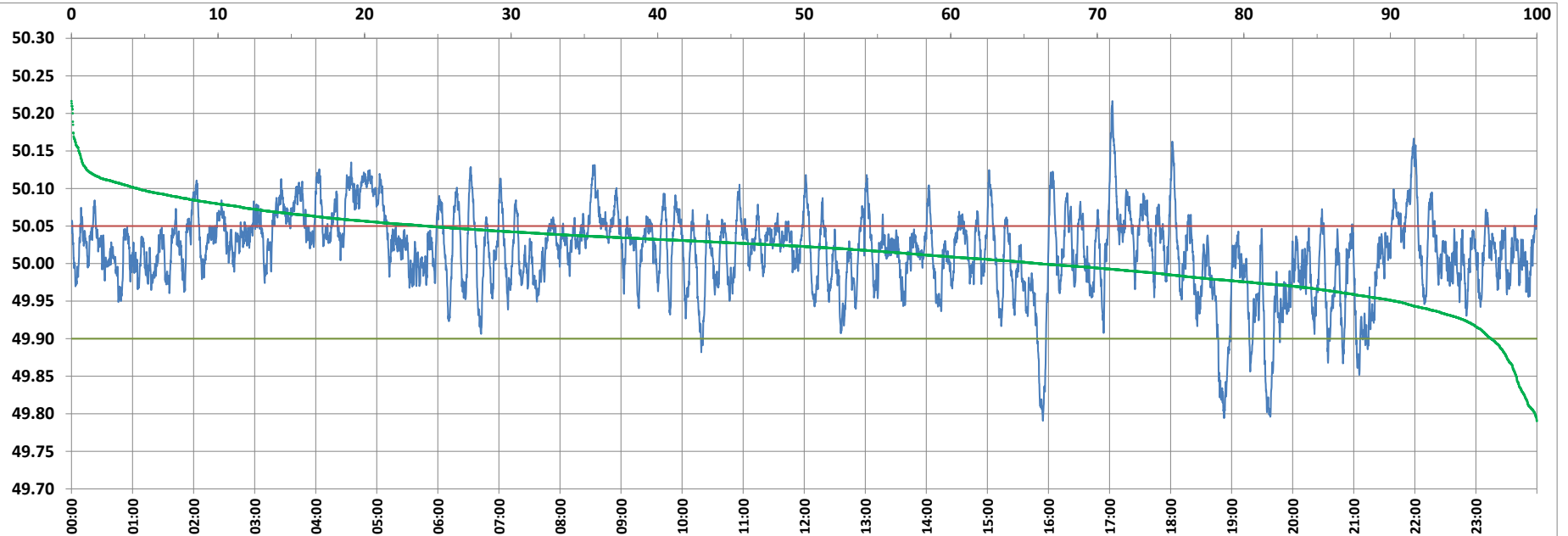


POWER SYSTEM OPERATION CORPORATION LIMITED

NATIONAL LOAD DESPATCH CENTRE, NEW DELHI



Frequency profile for 10-Feb-2022 (Thursday)



<49.7	<49.90	<49.97	49.7-49.8	49.8-49.9	49.9-50.0	50.0-50.1	50.1-50.2	49.90-50.05	49.7-50.2	49.97-50.03	50.05-50.1	>50	>50.03	>50.05	>50.2	<49.95	49.95-50.05	49.90-49.95
0.00	3.14	16.68	0.13	3.01	30.82	61.50	4.44	72.63	99.91	40.66	19.70	66.04	42.66	24.24	0.09	9.68	66.09	6.54

Average Frequency : 50.016

Frequency Variation Index : 0.0324

Standard Deviation : 0.0547

Mileage: 45.8

FDI: 27.4

Instantaneous Frequency		
Max	50.216	17:02:50
Min	49.791	15:54:30

15 minute Average Frequency		
Max	50.107	5:00:00
Min	49.861	19:00:00

No. of excursions	
above 50.03 Hz	220
below 49.97 Hz	110
above 50.00 Hz	175
below 50.00 Hz	174

Average time freq per excursion remains	
below 49.97	0:02:11
above 50.03	0:02:48

No. of hours freq outside 49.9-50.05 Hz	
	6:34:10

Source : AGRA 10 Sec. (8640 samples)