

पावर सिस्टम ऑपरेशन कारपोरेशन लिमिटेड
(पावरग्रिड की पूर्ण स्वामित्व प्राप्त सहायक कंपनी)
POWER SYSTEM OPERATION CORPORATION LIMITED
(A wholly owned subsidiary of POWERGRID)



राष्ट्रीय भार प्रेषण केन्द्र : बी - 9, कुतुब इंस्टीट्यूशनल एरिया, कटवारिया सराय, नई दिल्ली - 110016
National Load Despatch Centre : B - 9, Qutab Institutional Area, Katwaria Sarai, New Delhi - 110016
Website : www.nldc.in, www.nldcindia.in, Tel. : 011-26536832, 26524522, Fax : 011-26524525, 26536901

संदर्भ संख्या:-POSOCO/NLDC/GM/

दिनांक: 24.07.2012

सेवा में,

वितरण सूची के अनुसार

विषय:- निष्पादन रिपोर्ट - जून 2012

महोदय,

आई०ई०जी०सी०-2010 के प्रावधान के अनुसार, - जून 2012 माह की अखिल
भारतीय प्रणाली की निष्पादन रिपोर्ट

धन्यवाद

भवदीय

(अवधेश मणि)

अपर महाप्रबंधक

(रा०भा०प्रे०के०)

संलग्नक: मासिक प्रणाली रिपोर्ट

Distribution List

1. Secretary ,CERC, 3rd & 4th Floor , Chanderlok Building,36,Janpath,New Delhi-110001
2. Chief Engineer(GM),CEA,Sewa Bhavan, R.K.Puram , New Delhi-110066
3. Member Secretary ,NRPC,18/A,SJSS Marg, Katwaria Sarai,New Delhi-110016
4. Member Secretary ,WRPC,F-3,MIDC Area,Andheri (East),Mumbai-400093
5. Member Secretary,SRPC,29,Race Course Cross Road,Bangalore-560009
6. Member Secretary,ERPC,14,Golf Club Road , Kolkata-7000033
7. Member Secretary,NERPC,Meghalaya State Housing Finance Cooperative Society Ltd.
Building,Nongrim Hills , Shillong -793003
8. General Manager , ERLDC,14, Golf Club Road , Kolkata-7000033
9. General Manager, WRLDC,F-3,MIDC Area,Andheri (East),Mumbai-400093
10. General Manager, NRLDC,18/A,SJSS Marg, Katwaria Sarai,New Delhi-110016
11. General Manager , SRLDC, 29,Race Course Cross Road,Bangalore-560009
12. AGM,NERLDC,Dongtiah,Lower Nongrah,Laplang,Shillong-793006

POWER SYSTEM OPERATION CORPORATION LTD
NATIONAL LOAD DESPATCH CENTRE



OPERATIONAL PERFORMANCE REPORT FOR THE
MONTH OF JUNE 2012

CONTENTS

1. SUMMARY OF REPORT FOR THE MONTH OF JUNE 2012
2. REGION WISE INSTALLED CAPACITY
3. PEAK DEMAND MET AT NATIONAL LEVEL
4. ENERGY CONSUMPTION AT NATIONAL LEVEL
5. FREQUENCY PROFILE
6. HYDRO GENERATION AT NATIONAL LEVEL
7. WIND GENERATION AT NATIONAL LEVEL
8. PEAK DEMAND & ENERGY MET AT REGIONAL LEVEL
9. SCHEDULE & DRAWAL AT REGIONAL LEVEL
10. INTER-REGIONAL EXCHANGES
11. BILATERAL SHORT-TERM OPEN ACCESS & UI DETAILS
12. POWER MARKET INFORMATION
13. IMPORTANT EVENTS/DISTURBANCES
14. IMPORTANT ELEMENTS COMMISSIONED
15. VOLTAGE PROFILE

SUMMARY OF REPORT FOR THE MONTH OF JUNE 2012

- During the month of June 2012, the overall system was running normal to the large extent except few events / incidents. The maximum of all India peak demand met was 118066 MW (on 23-06-2012) which is 7.4% more as compared to last year June month demand (109838 MW) and 0.8% less as compared to May 2012 demand (119089 MW).
- For 78.66% of time, the NEW grid frequency was in the IEGC band (49.5 – 50.2) against 87.82% of the time in the last month (May 2012). For SR Grid, the frequency remained within the IEGC band for 91.03% of the time against 94.01% of the time in the last month (May 2012).
- All India energy consumption was 79472 MUs at the average of 2649MUs/day which is 1.49% more than that of last month (May 2012) average energy consumption (80923 MUs, Average 2610 MUs/day) and 10.55% more than the last year June month average energy consumption (71894MUs, Average 2396 MUs/day).
- There was around 7.34% decrement in average all India Hydro generation compared to last year & 17% increment compared to last month.
- Regarding wind generation, there was around 82.75% increment in average all India wind generation compared to last month. June 2012 average wind generation was 159 MUs/day against 87 MUs/day in May 2012.

**ALL INDIA REGIONWISE GENERATING INSTALLED CAPACITY (MW) OF
POWER UTILITIES INCLUDING ALLOCATED SHARES IN JOINT AND CENTRAL
SECTOR UTILITIES**
(As on 30-06-2012)

SL. NO.	REGION	THERMAL				Nuclear	HYDRO (Renewable)	R.E.S.@ (MNRE)	TOTAL
		COAL	GAS	DSL	TOTAL				
1	Northern	29923.50	4671.26	12.99	34607.75	1620.00	15423.75	4406.64	56058.14
2	Western	41129.50	8254.81	17.48	49401.79	1840.00	7447.50	8067.26	66756.55
3	Southern	22882.50	4962.78	939.32	28784.60	1320.00	11338.03	11713.98	53156.61
4	Eastern	22337.88	190.00	17.20	22545.08	0.00	3882.12	410.71	26837.91
5	N. Eastern	60.00	824.20	142.74	1026.94	0.00	1200.00	228.00	2454.94
6	Islands	0.00	0.00	70.02	70.02	0.00	0.00	6.10	76.12
7	All India	116333.38	18903.05	1199.75	136436.18	4780.00	39291.40	24832.68	205340.26

Source-CEA

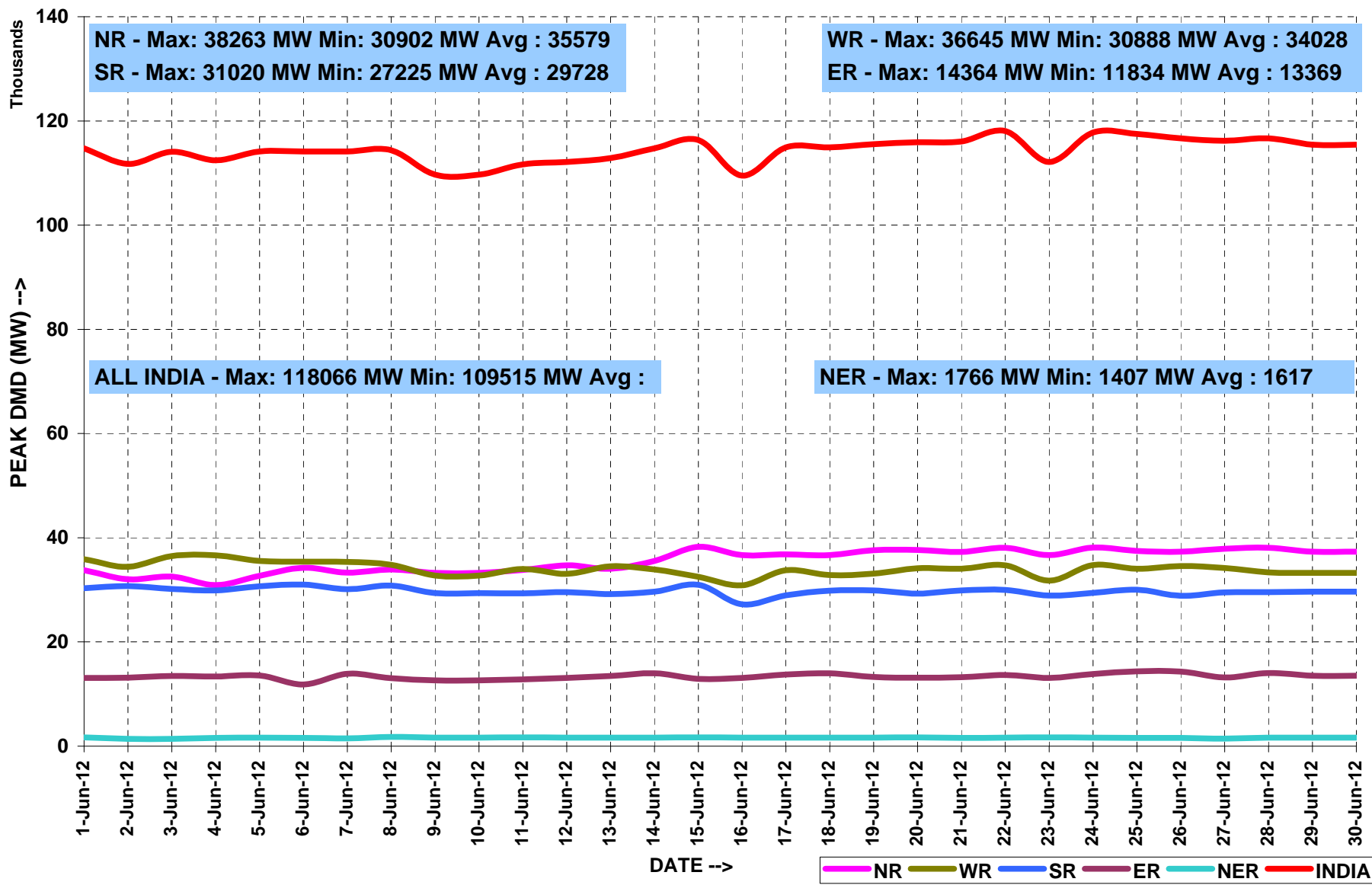
PEAK DEMAND MET AT NATIONAL LEVEL

MONTH:- JUNE 2012

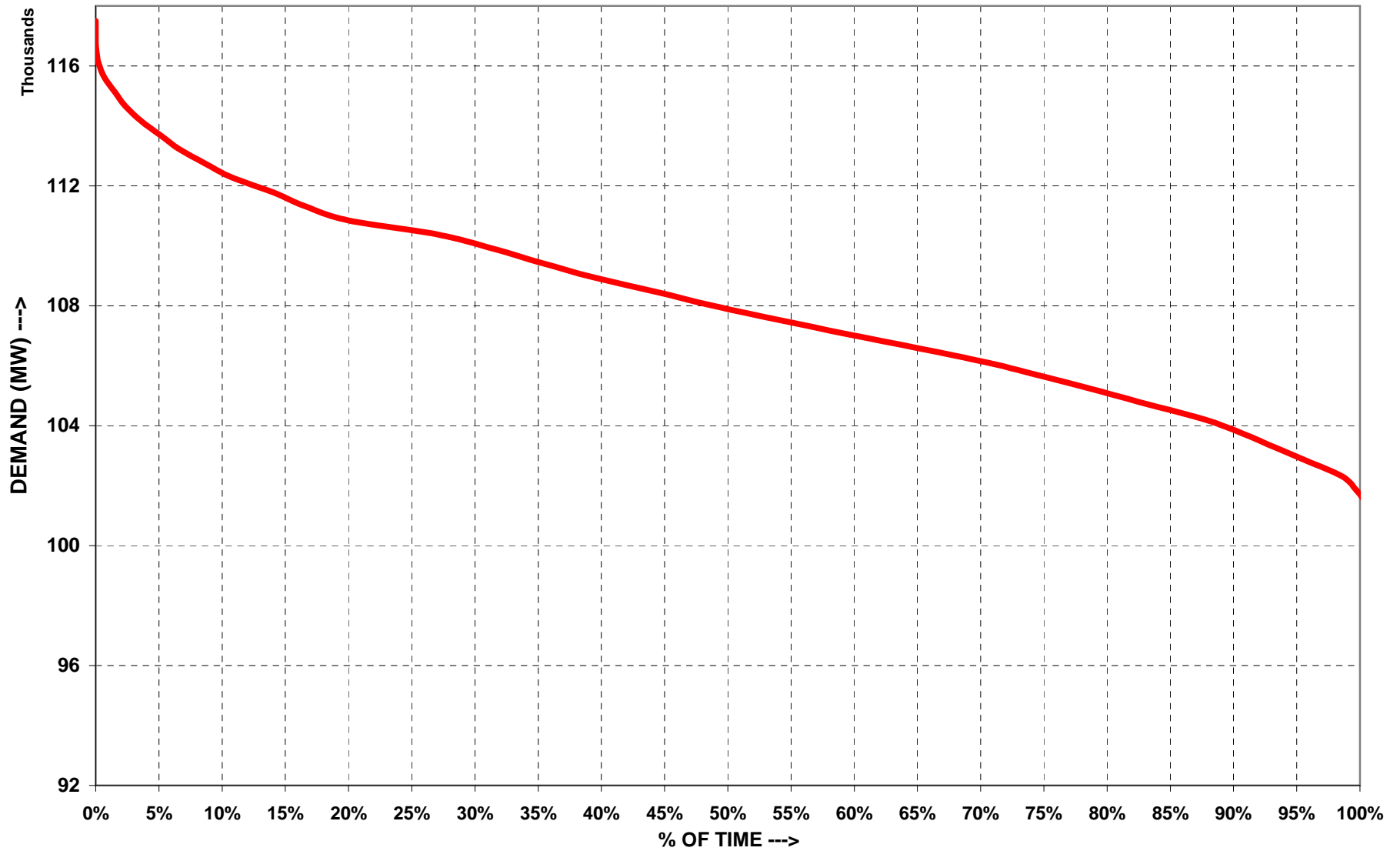
All figures in MW

Date	NR	WR	SR	ER	NER	TOTAL
6/1/2012	34495	35657	30511	13655	1680	115998
6/2/2012	33794	35881	30313	13100	1667	114755
6/3/2012	32048	34405	30737	13155	1407	111752
6/4/2012	32577	36491	30164	13450	1423	114105
6/5/2012	30902	36645	29904	13386	1610	112447
6/6/2012	32718	35555	30663	13556	1650	114142
6/7/2012	34236	35414	31020	11834	1608	114112
6/8/2012	33282	35364	30119	13878	1496	114139
6/9/2012	33930	34789	30821	13054	1766	114360
6/10/2012	33250	32762	29372	12652	1631	109667
6/11/2012	34037	34620	30342	13062	1717	113778
6/12/2012	33832	33985	29348	12815	1668	111648
6/13/2012	34716	33093	29548	13117	1629	112103
6/14/2012	34068	34519	29168	13478	1640	112873
6/15/2012	35544	33919	29638	14003	1643	114747
6/16/2012	38263	32522	30958	12890	1699	116332
6/17/2012	36667	30888	27225	13080	1655	109515
6/18/2012	36832	33762	28970	13739	1615	114918
6/19/2012	36682	32826	29828	13984	1627	114947
6/20/2012	37602	33119	29867	13302	1646	115536
6/21/2012	37654	34128	29301	13157	1688	115928
6/22/2012	37272	34038	29901	13240	1598	116049
6/23/2012	38062	34728	29984	13665	1627	118066
6/24/2012	36678	31768	28917	13076	1695	112134
6/25/2012	38111	34763	29401	13847	1644	117766
6/26/2012	37455	34067	30007	14364	1587	117480
6/27/2012	37323	34590	28864	14316	1586	116679
6/28/2012	37886	34170	29514	13168	1440	116178
6/29/2012	38059	33369	29574	14026	1652	116680
6/30/2012	37343	33266	29669	13536	1645	115459
MAXIMUM	38263	36645	31020	14364	1766	118066
MINIMUM	30902	30888	27225	11834	1407	109515
AVERAGE	35511	34170	29788	13386	1621	114476

PEAK DEMANDS MET DURING THE MONTH OF JUNE' 2012



ALL INDIA LOAD DURATION CURVE FOR JUNE' 2012



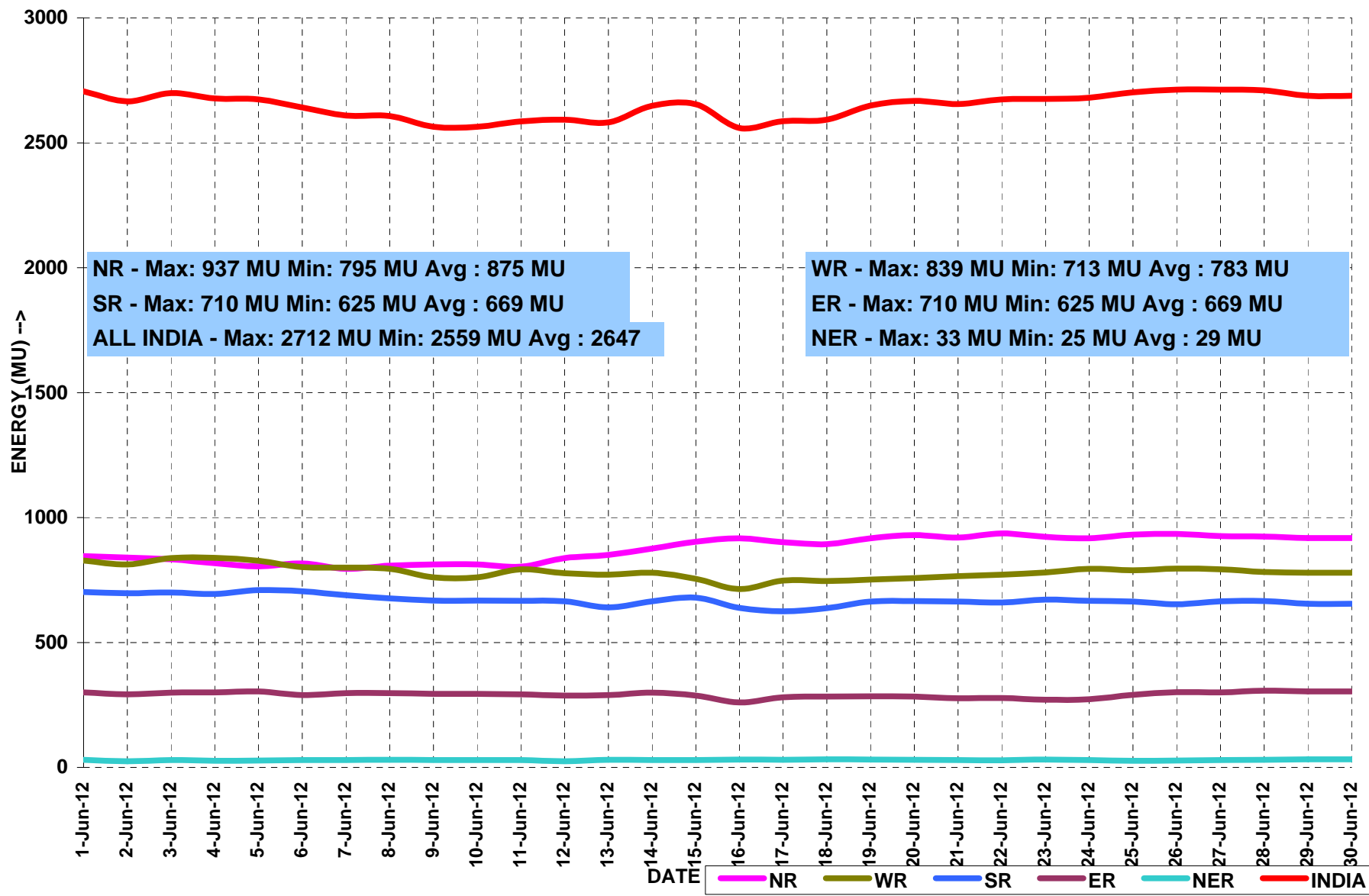
ENERGY MET AT NATIONAL LEVEL

MONTH:- JUNE 2012

All figures in MU

Date	NR	WR	SR	ER	NER	TOTAL
6/1/2012	853	825	702	305	29	2714
6/2/2012	845	828	702	300	30	2706
6/3/2012	840	812	697	292	25	2666
6/4/2012	833	837	700	299	29	2699
6/5/2012	818	839	694	300	27	2677
6/6/2012	805	827	710	304	28	2673
6/7/2012	816	802	705	290	29	2641
6/8/2012	795	799	689	297	29	2609
6/9/2012	808	795	676	297	31	2607
6/10/2012	812	761	668	294	29	2564
6/11/2012	799	791	688	285	29	2592
6/12/2012	804	793	667	292	29	2585
6/13/2012	838	777	665	288	25	2593
6/14/2012	851	771	640	290	30	2582
6/15/2012	876	779	665	299	29	2648
6/16/2012	904	754	679	287	30	2654
6/17/2012	917	713	638	260	31	2559
6/18/2012	902	748	625	281	31	2586
6/19/2012	893	746	637	283	33	2592
6/20/2012	917	752	664	285	31	2649
6/21/2012	929	758	666	284	31	2667
6/22/2012	920	766	664	276	29	2655
6/23/2012	937	771	660	278	28	2674
6/24/2012	922	780	672	271	31	2676
6/25/2012	917	794	667	273	29	2681
6/26/2012	932	789	664	290	27	2701
6/27/2012	935	796	653	301	28	2712
6/28/2012	926	792	665	300	29	2712
6/29/2012	924	782	666	307	31	2710
6/30/2012	918	779	655	304	32	2688
TOTAL	26183	23558	20143	8711	878	79472
MAXIMUM	937	839	710	307	33	2714
MINIMUM	795	713	625	260	25	2559
AVERAGE	873	785	671	290	29	2649

ENERGY MET DURING THE MONTH OF JUNE' 2012

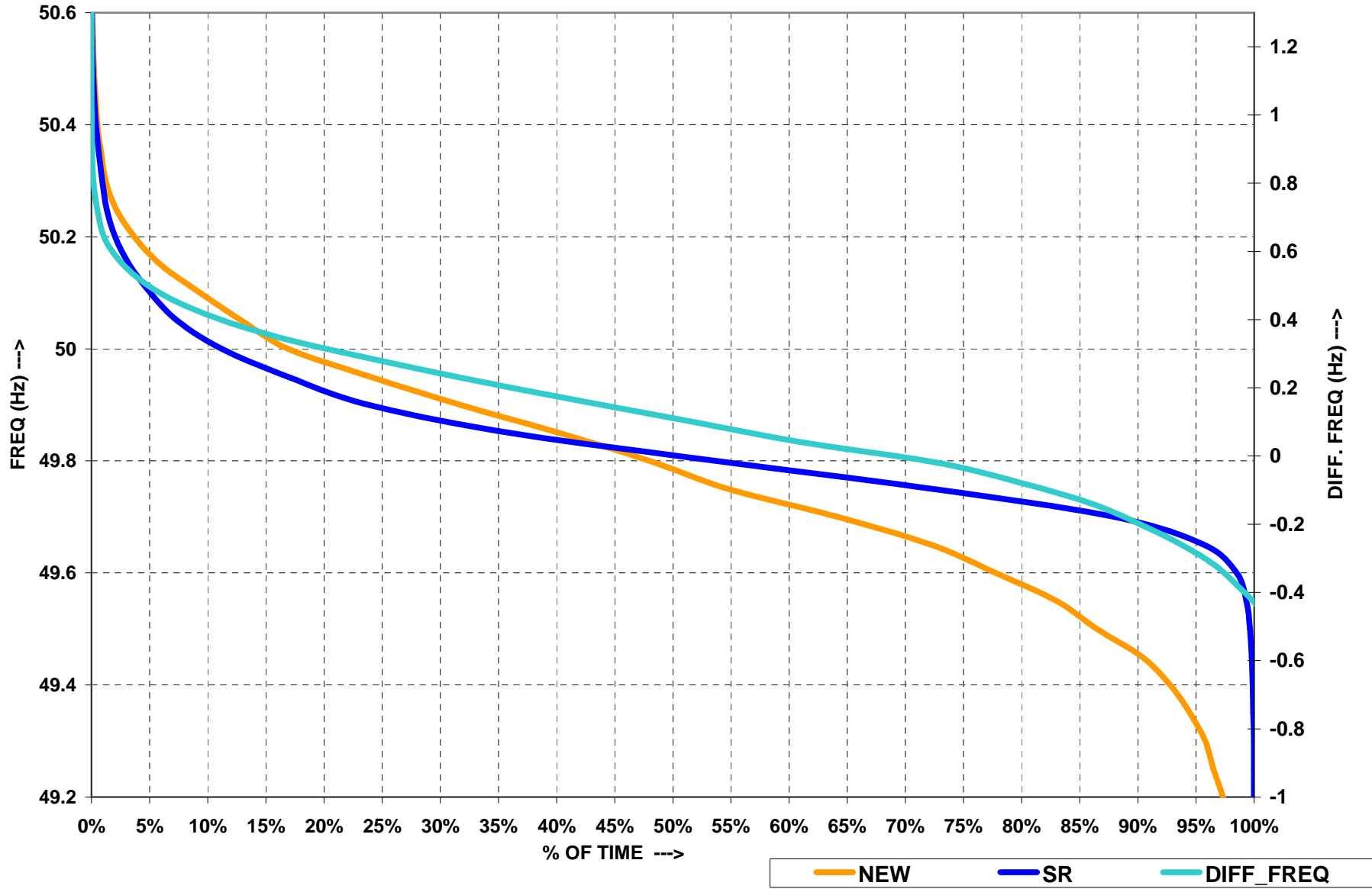


FREQUENCY PROFILE FOR THE MONTH OF JUNE 2012

SR GRID										
FREQUENCY PROFILE		< 48.5	48.5 - 49.5	< 49.5	49.5 - 50.2	>50.2		Max. Freq	Min. Freq	Avg. Freq
% TIME	Apr-12	0.00	7.79	7.79	91.28	0.93		50.66	48.66	49.69
	May-12	0.00	5.61	5.61	94.01	0.38		50.63	48.81	49.7
	Jun-12	0.00	7.83	7.83	91.03	1.14		50.79	48.86	49.68

NEW GRID										
FREQUENCY PROFILE		< 48.5	48.5 - 49.5	< 49.5	49.5 - 50.2	>50.2		Max. Freq	Min. Freq	Avg. Freq
% TIME	Apr-12	0.00	2.38	2.38	93.68	3.94		50.66	49.08	49.9
	May-12	0.00	10.82	10.82	87.82	1.36		50.75	48.82	49.8
	Jun-12	0.00	19.95	19.95	78.66	1.39		50.68	48.75	49.7

FREQUENCY DURATION CURVES FOR JUNE' 2012



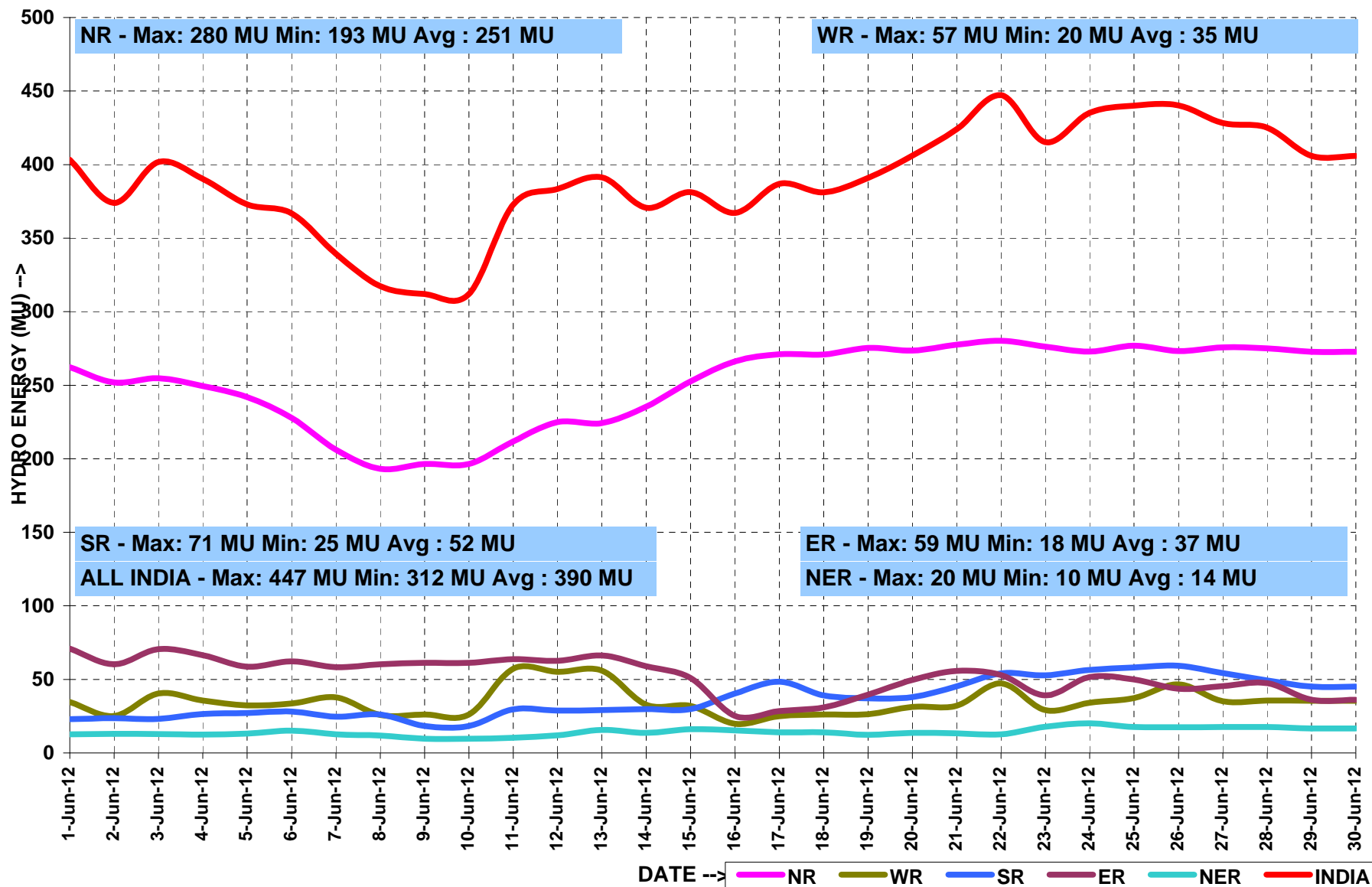
HYDRO GENERATION AT NATIONAL LEVEL

MONTH:- JUNE 2012

All figures in MU

Date	NR	WR	SR	ER	NER	TOTAL
6/1/2012	259	33	74	28	9	402
6/2/2012	262	35	71	23	13	403
6/3/2012	252	25	60	24	13	374
6/4/2012	255	40	71	23	13	402
6/5/2012	249	36	66	26	13	390
6/6/2012	242	32	59	27	13	373
6/7/2012	228	34	62	28	15	367
6/8/2012	206	38	58	25	13	339
6/9/2012	193	26	60	26	12	317
6/10/2012	197	26	61	18	10	312
6/11/2012	199	51	64	22	11	347
6/12/2012	212	57	64	30	10	373
6/13/2012	225	55	63	29	12	383
6/14/2012	224	56	66	29	16	391
6/15/2012	235	33	59	30	14	371
6/16/2012	253	32	51	30	16	381
6/17/2012	266	20	25	41	15	367
6/18/2012	271	25	29	48	14	387
6/19/2012	271	26	31	39	14	381
6/20/2012	275	26	40	37	12	391
6/21/2012	274	31	50	38	14	406
6/22/2012	278	32	56	45	13	424
6/23/2012	280	47	53	54	13	447
6/24/2012	276	29	39	53	18	415
6/25/2012	273	34	52	56	20	435
6/26/2012	277	37	50	58	18	440
6/27/2012	273	47	44	59	17	440
6/28/2012	276	35	46	54	18	428
6/29/2012	275	36	47	49	18	425
6/30/2012	273	35	36	45	17	406
TOTAL	7529	1070	1605	1094	421	11719
MAXIMUM	280	57	74	59	20	447
MINIMUM	193	20	25	18	9	312
AVERAGE	251	36	54	36	14	391

HYDRO ENERGY DURING THE MONTH OF JUNE' 2012



WIND GENERATION AT NATIONAL LEVEL

MONTH:- JUNE 2012

All figures in MU

Date	NR	WR	SR	ER	NER	TOTAL
6/1/2012	17	70	88	175
6/2/2012	29	67	96	191
6/3/2012	32	53	89	174
6/4/2012	31	46	87	164
6/5/2012	13	39	89	140
6/6/2012	5	21	88	114
6/7/2012	6	22	86	114
6/8/2012	23	41	79	143
6/9/2012	30	43	95	168
6/10/2012	30	43	95	168
6/11/2012	6	13	84	103
6/12/2012	3	13	89	106
6/13/2012	8	12	63	83
6/14/2012	16	25	86	127
6/15/2012	18	47	96	160
6/16/2012	19	65	88	172
6/17/2012	21	71	98	190
6/18/2012	20	79	100	199
6/19/2012	31	77	102	210
6/20/2012	32	75	82	189
6/21/2012	33	63	76	172
6/22/2012	28	60	81	168
6/23/2012	30	59	104	192
6/24/2012	35	70	92	197
6/25/2012	34	69	77	181
6/26/2012	30	57	80	167
6/27/2012	20	43	93	155
6/28/2012	18	36	91	144
6/29/2012	21	30	100	151
6/30/2012	21	30	100	151
TOTAL	658	1438	2672	4768
MAXIMUM	35	79	104	210
MINIMUM	3	12	63	83
AVERAGE	22	48	89	159

ACTUAL POWER SUPPLY POSITION - JUNE 2012

REGION	STATE	Requirement/Availability in MU/DAY			Requirement/Availability in MU				Peak Demand/Peak Met in MW			
		Requirement	Energy met	Surplus(+)/ Deficit(-)	Requirement	Energy met	Surplus(+)/ Deficit(-)	% Shortage	Requirement	Peak Demand	Surplus(+)/ Deficit(-)	% Shortage
NR	Chandigarh	6	6	0	193	193	0	0	329	329	0	0
	Delhi	103	103	0	3102	3101	-1	0	5472	5389	-83	2
	Haryana	137	122	-15	4098	3662	-437	11	7112	6381	-731	10
	H.P.	24	23	-1	715	690	-26	4	1254	1176	-78	6
	J&K	39	30	-10	1184	888	-296	25	2150	1612	-538	25
	Punjab	183	170	-13	5489	5095	-394	7	9055	8013	-1042	12
	Rajasthan	151	148	-4	4532	4425	-107	2	7686	7634	-52	1
	U.P.	281	239	-41	8416	7178	-1238	15	13258	12048	-1210	9
	Uttarakhand	34	33	-2	1030	977	-53	5	1757	1397	-360	20
	NFF/Railway	2	2	0	67	67	0	0	100	100	0	0
	TOTAL	961	876	-85	28826	26275	-2551	9	45860	40648	-5212	11
WR	Gujarat	246	243	-2	7372	7297	-75	-1	11586	11406	-180	-2
	Madhya Pradesh	122	111	-11	3669	3325	-344	-9	7484	6714	-770	-10
	Chhattisgarh	60	59	-1	1786	1768	-18	-1	3088	2886	-202	-7
	Maharashtra	359	347	-12	10778	10407	-371	-3	18282	17182	-1100	-6
	Goa	7	7	0	224	219	-5	-2	477	413	-64	-13
	D&D	6	6	-1	191	171	-20	-11	276	247	-29	-11
	DNH	13	13	0	399	395	-4	-1	586	579	-7	-1
	TOTAL	814	786	-28	24420	23582	-838	-3	38383	37060	-1323	-3
SR	AP-TRANSCO	256	220	-36	7680	6612	-1068	-14	11523	10826	-697	-6
	KPTCL	181	160	-21	5432	4801	-631	-12	8896	8066	-830	-9
	KSEB	56	55	-1	1676	1638	-38	-2	3378	3128	-250	-7
	TNEB	264	230	-35	7928	6893	-1035	-13	12548	11283	-1265	-10
	PONDY	7	6	0	195	191	-4	-2	325	320	-5	-2
		TOTAL	764	671	-93	22911	20135	-2776	-12	36492	32110	-4382
ER	Bihar	40	34	-40	1190	1020	-170	-14	2450	1802	-648	-26
	JSEB	19	18	-1	580	547	-33	-6	1090	995	-95	-9
	GRIDCO	49	52	3	1475	1556	81	5	2460	2925	465	19
	DVC	70	64	-6	2088	1917	-171	-8	3510	3317	-193	-5
	West Bengal	125	134	9	3753	4029	276	7	6463	6954	491	8
	TOTAL	303	302	-1	9086	9069	-17	0	16609	14764	-1845	-11
NER	Arunachal Pradesh	2	2	0	48	45	-3	-6	116	114	-2	-2
	Assam	19	18	-2	576	526	-50	-9	1186	1052	-134	-11
	Manipur	1	1	0	41	38	-3	-6	116	113	-3	-3
	MeSEB	4	4	0	133	123	-10	-8	272	268	-4	-2
	Mizoram	1	1	0	32	29	-2	-8	64	62	-2	-2
	Nagaland	1	1	0	41	38	-2	-6	100	95	-5	-5
	Tripura	3	3	0	87	83	-4	-5	181	179	-2	-1
	TOTAL	32	29	-2	958	883	-75	-8	2034	1883	-151	-7

SCHEDULE AND DRAWAL OF CONSTITUENTS - JUNE 2012

REGION	STATE	SCHEDULE (MU)	ACTUAL DRAWAL (MU)	Over drawal(+)/ Under Drawal(-) (MU)	SCHEDULE (MU/DAY)	ACTUAL DRAWAL (MU/DAY)	Over drawal(+)/ Under Drawal(-) (MU/DAY)
NR	Chandigarh	198	193	-5	7	6	0
	Delhi	2495	2304	-191	83	77	-6
	Haryana	1817	2064	247	61	69	8
	H.P.	197	189	-7	7	6	0
	J&K	419	435	15	14	14	1
	Punjab	2928	3127	199	98	104	7
	Rajasthan	1407	1505	98	47	50	3
	U.P.	3011	3762	750	100	125	25
	Uttarakhand	383	420	37	13	14	1
	NFF/Railway	65	67	2	2	2	0
WR	Gujarat	1216	871	-345	41	29	-11
	Madhya Pradesh	1612	1530	-82	54	51	-3
	Maharashtra	3206	3163	-43	107	105	-1
	Chhattisgarh	355	312	-43	12	10	-1
	Goa	196	203	7	7	7	0
	D&D	177	171	-7	6	6	0
	D&NH	414	395	-19	14	13	-1
SR	APTRANSCO	1543	1649	105	51	55	4
	KPTCL	1076	1113	37	36	37	1
	KSEB	991	1083	93	33	36	3
	TNEB	1584	1547	-37	53	52	-1
	PONDY	212	191	-21	7	6	-1
	GOA(SR)	49	46	-3	2	2	0
ER	Bihar	1177	1052	-126	39	35	-4
	JSEB	361	259	-102	12	9	-3
	DVC	-470	-483	-14	-16	-16	0
	GRIDCO	674	675	1	22	23	0
	Sikkim	912	907	-6	30	30	0
	WBSEB	29	30	1	1	1	0
NER	Arunachal Pradesh	56	44	-12	2	1	0
	Assam	394	372	-22	13	12	-1
	Manipur	53	41	-12	2	1	0
	MeSEB	80	66	-14	3	2	0
	Mizoram	33	27	-6	1	1	0
	Nagaland	38	37	-1	1	1	0
	Tripura	40	28	-12	1	1	0

Inter-Regional Exchanges (2012-2013)

All figs. in MUs
ALL FIGURES ARE IN MUS

		Apr-12	May-12	Jun-12	Jul-12	Aug-12	Sep-12	Oct-12	Nov-12	Dec-12	Jan-13	Feb-13	Mar-13	Total FINANCIAL YEAR 2012-13 (Till June'12)
*	WR-NR	HVDC Vindhyachal B/B	22.31	146.15	203.64									372.10
		220KV Aur.-Mal.	0.33	0.00	1.51									1.83
		220KV Kota/Morak-Badod	6.94	40.25	11.71									58.90
		400KV Agra-Gwalior	460.85	610.16	697.97									1768.98
		400KV Kankroli-Jerda	4.20	20.06	72.81									97.07
		400KV Bhinmal-Jerda	3.30	40.92	72.65									116.87
*	ER-NR	400KV Barh - Balia	114.24	214.97	175.75									504.96
		HVDC Sasaram B/B (Bypass wef 1 DEC'08)	22.34	63.33	58.57									144.24
		400KV Mzp-Gkp	309.11	484.33	447.30									1240.73
		220/132kV	105.31	98.91	105.40									309.62
		400KV Patna-Balia	224.55	320.90	299.47									844.92
		400kV Pusauli- Balia	0.00	0.00	7.54									7.54
		400KV Biharshariff-Balia	208.57	293.31	274.10									775.98
*	NR-WR	HVDC Vindhyachal B/B	70.00	17.02	16.83									103.85
		220KV Aur.-Mal.	30.53	32.46	17.41									80.40
		220KV Kota/Morak-Badod	7.12	0.67	0.80									8.59
		400KV Agra-Gwalior	0.00	0.00	0.00									0.00
		400KV Kankroli-Jerda	86.94	14.45	11.31									112.70
		400KV Bhinmal-Jerda	68.76	8.67	12.42									89.85
*	NR-ER	400KV Barh - Balia	0.00	0.00	0.00									0.00
		220/132kV	27.60	26.92	26.92									81.45
		400KV Mzp-Gkp	0.00	0.00	0.00									0.00
		HVDC Sasaram B/B (Bypass wef 1 DEC'08)	64.08	22.02	39.74									125.84
		400KV Patna-Balia	0.00	0.00	0.00									0.00
		400KV Biharshariff-Balia	0.00	0.00	0.00									0.00
*	NR-Nepal		19.17	11.91	11.91									42.99
**	ER-SR	HVDC-Gaz.	157.65	108.00	195.80									461.45
		HVDC-Tal.	1571.43	1605.35	1427.68									4604.46
**	SR-ER	HVDC-Gaz.	1.64	0.00	2.83									4.47
***	ER-WR	AC links	190.04	206.00	102.00									498.04
***	WR-ER	AC links	423.07	426.00	601.00									1450.07
***	ER-NER	AC links	250.18	232.00	106.00									588.18
***	NER-ER	AC links	0.55	0.00	0.00									0.55
**	SR-WR	Chandrapur HVDC	0.00	0.00	0.00									0.00
**	WR-SR	Chandrapur HVDC	564.51	542.48	566.08									1673.07
	TOTAL		5015	5587	5567	0	0	0	0	0	0	0	0	16170
	ER-SR	Tal.-Kol. Interconnector	227.01	247.0	349.0									823.01
	Net IR (Excl. Tal.-II)		3217	3735	3790	0	0	0	0	0	0	0	0	10742

** Data is taken from SRLDC

*** Data is taken from ERLDC

STOA (BILATERAL AND COLLECTIVE) & UI BILLING DETAILS- JUNE' 2012

BILATERAL SHORT TERM OPEN ACCESS

Description	Name of RLDC	No. of Transactions	Energy Approved(MU)
JUNE'12	NR	389	1995
	WR	86	744
	SR	113	586
	ER	186	732
	NER	23	97
TOTAL		797	4155

COLLECTIVE SHORT TERM OPEN ACCESS

MONTH	NO. of Buyers/Sellers	Approved Energy (MU)
APR'12	1676	1337
MAY'12	1535	1478
JUN'12	1650	1630.38
TOTAL	4861	4446

MONTHLY UI BILLING DETAILS

(RS. IN CRORES)

REGION	NORTH	WEST	EAST	SOUTH	NORTH EAST
(Upto 29th APR'12)	342	249	161	69	17
(Upto 27th MAY'12)	937	630	363	135	32
(Upto 01st JULY'12)	1,913	1,109	807	219	56

POWER MARKET INFORMATION
EXCHANGES THROUGH POWER EXCHANGES (IEX & PXI) - JUNE' 2012

S. No.	STATE	Through Power Exchange in MU	
		Sale	Purchase
1	Punjab	0.00	241.06
2	Haryana	0.00	69.76
3	Rajasthan	37.20	173.65
4	Delhi	102.01	25.65
5	Uttar Pradesh	0.00	166.24
6	Uttarakhand	5.11	11.51
7	Himachal Pradesh	336.51	2.09
8	J & K	8.59	0.00
9	UT Chandigarh	3.75	1.71
10	AD Hydro	35.05	0.00
11	KW	161.88	0.00
12	Shree Cement	26.67	0.00
13	Nathpa Jhakri	0.00	0.00
14	Baira Siul HEP(BS0)	1.64	0.00
15	Chamera-I HEP(CM1)	12.40	0.00
16	Chamera-II HEP(CM2)	7.69	0.00
17	Dhauinganga HEP(DGM)	6.93	0.00
18	Dulahasti HEP(DU0)	8.12	0.00
19	Salal HEP(SL0)	11.41	0.00
20	Sewa-II NHPC(SW2)	1.24	0.00
21	Tanakpur HEP(TP0)	2.21	0.00
22	Uri HEP(UR0)	10.06	0.00
23	MP	37.26	11.42
24	Maharashtra	45.04	65.82
25	Gujarat	227.50	337.17
26	Chattisgarh	115.68	0.00
27	Goa	0.02	0.00
28	Daman and Diu	0.00	0.00
29	Dadra & Nagar Haveli	0.00	0.00
30	JD	83.64	0.00
31	LANCO AMK	87.14	0.00
32	ACB India Limited	4.44	0.00
33	Jindal Steel and Power Ltd	21.24	0.00
34	Balco-II	2.70	0.00
35	Andhra Pradesh	31.14	147.77
36	Karnataka	90.40	10.34
37	Kerala	0.00	113.15
38	Tamilnadu	0.00	131.95
39	Pondicherry	0.00	0.00
40	Goa	0.00	0.00
41	LANCO_KONDPLY	0.00	0.00
42	SIMHAPURI	2.84	0.02
43	West Bengal	15.28	52.80
44	Orissa	0.05	8.71
45	Bihar	0.00	0.00
46	Jharkhand	0.00	30.80
47	Sikkim	23.39	0.00
48	DVC	7.69	11.73
49	STERLITE	30.00	0.00
50	Maithon Power Ltd	0.00	0.00
51	Arunachal Pradesh	0.00	0.00
52	Assam	14.65	12.44
53	Manipur	0.00	0.00
54	Meghalaya	5.37	2.89
55	Mizoram	4.03	0.00
56	Nagaland	0.00	0.00
57	Tripura	0.43	0.68
58	ASSAM GBPP	0.00	0.00
59	KOPLI	0.00	0.00
60	Agartala GTPP(AG0)	0.00	0.00
61	KOPLI	0.97	0.00

IMPORTANT EVENTS / DISTURBANCES – June 2012

NIL

IMPORTANT ELEMENTS COMMISSIONED DURING JUNE 2012

SL. NO	ELEMENT	VOLTAGE IN KV	DATE OF CHARGING
1	In WR, 220 KV Satna-Mehar was taken in service for 1 st time at 1750 hours .	220	06/06/2012
2	In ER, 400 KV Jamshedpur(TISCO)-Baripada II was taken in service for 1 st time at 1605 hours.	400	10/06/2012
3	In ER, 400 KV Maithon-Raghunathpur-Ranchi was charged for 1 st time at 1339 hours.	400	25/06/2012
4	In ER, 400 KV B'shariff-Koderma was charged for 1 st time at 1953 hours.	400	26/06/2012
5	In NR, 400 KV M'garh-Bhiwani(PG) was charged for 1 st time at 1205 hours..	400	27/06/2012
6	In ER.at Koderma S/S 400/132 KV ICT was charged for 1 st time.	400	28/06/2012
7	In WR.at Satna S/S, 1000 MVA,765/400 KV ICT was loaded for 1 st time at 1245 hours.	400	30/06/2012
8	In NR, Balia-Bhiwadi(HVDC) pole-II was charged for 1 st time.	400	30/06/2012
9	In WR, 400 KV Kolhapur-Sholapur was charged for 1 st time at 1858 hours	400	30/06/2012
10	In ER, 400 KV Sasaram-Nabinagar- I & II were charged for 1 st time at 2227 & 2248 hours respectively .	400	30/06/2012

VOLTAGE PROFILE - JUNE 2012

Sl. No.	REGION	SUBSTATION	Maximum(kV)	Minimum(kV)
1	ER	FARAKKA	424	408
2		KAHALGAON	432	404
3		TALCHER	415	399
4		BINAGURI	428	393
5		PURNEA	430	384
6		MUZAFFARPUR	432	380
7		JAMSHEDPUR	431	411
8		RENGALI	412	395
9		JEYPORE	438	388
1	NR	NALLAGARH	422	376
2		BHIWADI	430	386
3		BALLABGARH	422	384
4		ALLAHABAD	432	389
5		HISSAR	416	377
6		BAWANA	418	390
7		KANPUR	422	382
1	WR	ASOJ	421	402
2		ITARSI	426	403
3		JETPUR	427	401
4		KARAD	431	398
5		KASOR	423	412
6		BINA	432	416
7		GWALIOR	425	407
8		DHULE	430	406

VOLTAGE PROFILE - JUNE 2012

Sl. No.	REGION	SUBSTATION	Maximum(kV)	Minimum(kV)
1	SR	SRIPERUMPUDUR	411	360
2		NEYVELI	414	390
3		SALEM	415	382
4		BANGALORE	416	379
5		HOSUR	412	386
6		RAMAGUNDAM	424	403
7		VIJAYAWADA	432	413
8		TIRIVANDRUM	423	378
9		HYDERABAD	428	398
1	NER	MISA	431	389
2		BALIPARA	424	388
3		BONGAIGAON	411	390
4		SALAKATI	237	215
5		HAFLONG	141	126
6		AIZWAL	140	121
7		KUMARGHAT	135	125
8		IMPHAL	142	124
9		Khlieriat_PG	141	128