

# पावर सिस्टम ऑपरेशन कारपोरेशन लिमिटेड

(पावरग्रिड की पूर्ण स्वामित्व प्राप्त सहायक कंपनी)

**POWER SYSTEM OPERATION CORPORATION LIMITED**

(A wholly owned subsidiary of POWERGRID)



राष्ट्रीय भार प्रेषण केन्द्र : बी-9, कुतुब इंस्टीट्यूशनल एरिया, कटवारिया सराय, नई दिल्ली- 110016  
National Load Despatch Centre : B-9, Qutab Institutional Area, Katwaria Sarai, New Delhi - 110016  
website : www.nldc.in, www.nldcindia.in, Tel.: 011-26536832, 011-26524522, Fax : 011-26524525, 011-26536901

संदर्भ संख्या:-POSOCO/NLDC/GM/

दिनांक: 25.06.2012

सेवा में,

वितरण सूची के अनुसार

विषय:- निष्पादन रिपोर्ट - मई 2012

महोदय,

आई०ई०जी०सी०-2010 के प्रावधान के अनुसार, - मई 2012 माह की अखिल  
भारतीय प्रणाली की निष्पादन रिपोर्ट

धन्यवाद

भवदीय

(अवधेश मणि) 25.6.12

अपर महाप्रबंधक

(रा०भा०प्रे०के०)

संलग्नक: मासिक प्रणाली रिपोर्ट

## Distribution List

1. Secretary ,CERC, 3<sup>rd</sup> & 4<sup>th</sup> Floor , Chanderlok Building,36,Janpath,New Delhi-110001
2. Chief Engineer(GM),CEA,Sewa Bhavan, R.K.Puram , New Delhi-110066
3. Member Secretary ,NRPC,18/A,SJSS Marg, Katwaria Sarai,New Delhi-110016
4. Member Secretary ,WRPC,F-3,MIDC Area,Andheri (East),Mumbai-400093
5. Member Secretary,SRPC,29,Race Course Cross Road,Bangalore-560009
6. Member Secretary,ERPC,14,Golf Club Road , Kolkata-7000033
7. Member Secretary,NERPC,Meghalaya State Housing Finance Cooperative Society Ltd.  
Building,Nongrim Hills , Shillong -793003
8. General Manager , ERLDC,14, Golf Club Road , Kolkata-7000033
9. General Manager, WRLDC,F-3,MIDC Area,Andheri (East),Mumbai-400093
10. General Manager, NRLDC,18/A,SJSS Marg, Katwaria Sarai,New Delhi-110016
11. General Manager , SRLDC, 29,Race Course Cross Road,Bangalore-560009
12. AGM,NERLDC,Dongtiah,Lower Nongrah,Laplang,Shillong-793006

POWER SYSTEM OPERATION CORPORATION LTD  
NATIONAL LOAD DESPATCH CENTRE



OPERATIONAL PERFORMANCE REPORT FOR THE  
MONTH OF MAY 2012

## CONTENTS

1. SUMMARY OF REPORT FOR THE MONTH OF MAY 2012
2. REGION WISE INSTALLED CAPACITY
3. PEAK DEMAND MET AT NATIONAL LEVEL
4. ENERGY CONSUMPTION AT NATIONAL LEVEL
5. FREQUENCY PROFILE
6. HYDRO GENERATION AT NATIONAL LEVEL
7. WIND GENERATION AT NATIONAL LEVEL
8. PEAK DEMAND & ENERGY MET AT REGIONAL LEVEL
9. SCHEDULE & DRAWAL AT REGIONAL LEVEL
10. INTER-REGIONAL EXCHANGES
11. BILATERAL SHORT-TERM OPEN ACCESS & UI DETAILS
12. POWER MARKET INFORMATION
13. IMPORTANT EVENTS/DISTURBANCES
14. IMPORTANT ELEMENTS COMMISSIONED
15. VOLTAGE PROFILE

## **SUMMARY OF REPORT FOR THE MONTH OF MAY 2012**

- During the month of May 2012, the overall system was running normal to the large extent except few events / incidents. The maximum of all India peak demand met was 119089 MW (on 30-05-12) which is 8% more as compared to last year May month demand (110231MW) and 2.7% more as compared to April 2012 demand (115880 MW).
- For 87.82% of time, the NEW grid frequency was in the IEGC band (49.5 – 50.2) against 93.68% of the time in the last month (April 2012). For SR Grid, the frequency remained within the IEGC band for 94.01% against 91.28% of the time in the last month (April 2012).
- All India energy consumption was 80923 MUs at the average of 2610MUs/day which is 5% more than that of last month (April 2012) average energy consumption (74515 MUs, Average 2484 MUs/day) and 7.3% more than the last year May month average energy consumption (75346MUs, Average 2431 MUs/day).
- There was around 13% decrement in average all India Hydro generation compared to last year & 17% increment compared to last month.
- Regarding wind generation, there was around 128% increment in average all India wind generation compared to last month. May 2012 average wind generation was 87 MUs/day against 38 MUs/day in April 2012.

**ALL INDIA REGIONWISE INSTALLED CAPACITY (MW) AS ON  
31-05-2012**

SL. NO.	REGION	THERMAL				Nuclear	HYDRO (Renewable)	R.E.S.@ (MNRE)	TOTAL
		COAL	GAS	DSL	TOTAL				
1	Northern	30017.50	4421.26	12.99	34451.75	1620.00	15192.75	4391.40	55655.90
2	Western	39484.50	8254.81	17.48	47756.79	1840.00	7447.50	7909.95	64954.24
3	Southern	22882.50	4962.78	939.32	28784.60	1320.00	11338.03	11569.30	53011.93
4	Eastern	22337.88	190.00	17.20	22545.08	0.00	3882.12	398.71	26825.91
5	N. Eastern	60.00	824.20	142.74	1026.94	0.00	1200.00	228.00	2454.94
6	Islands	0.00	0.00	70.02	70.02	0.00	0.00	6.10	76.12
7	<b>All India</b>	<b>114782.38</b>	<b>18653.05</b>	<b>1199.75</b>	<b>134635.18</b>	<b>4780.00</b>	<b>39060.40</b>	<b>24503.45</b>	<b>202979.03</b>

Source-CEA

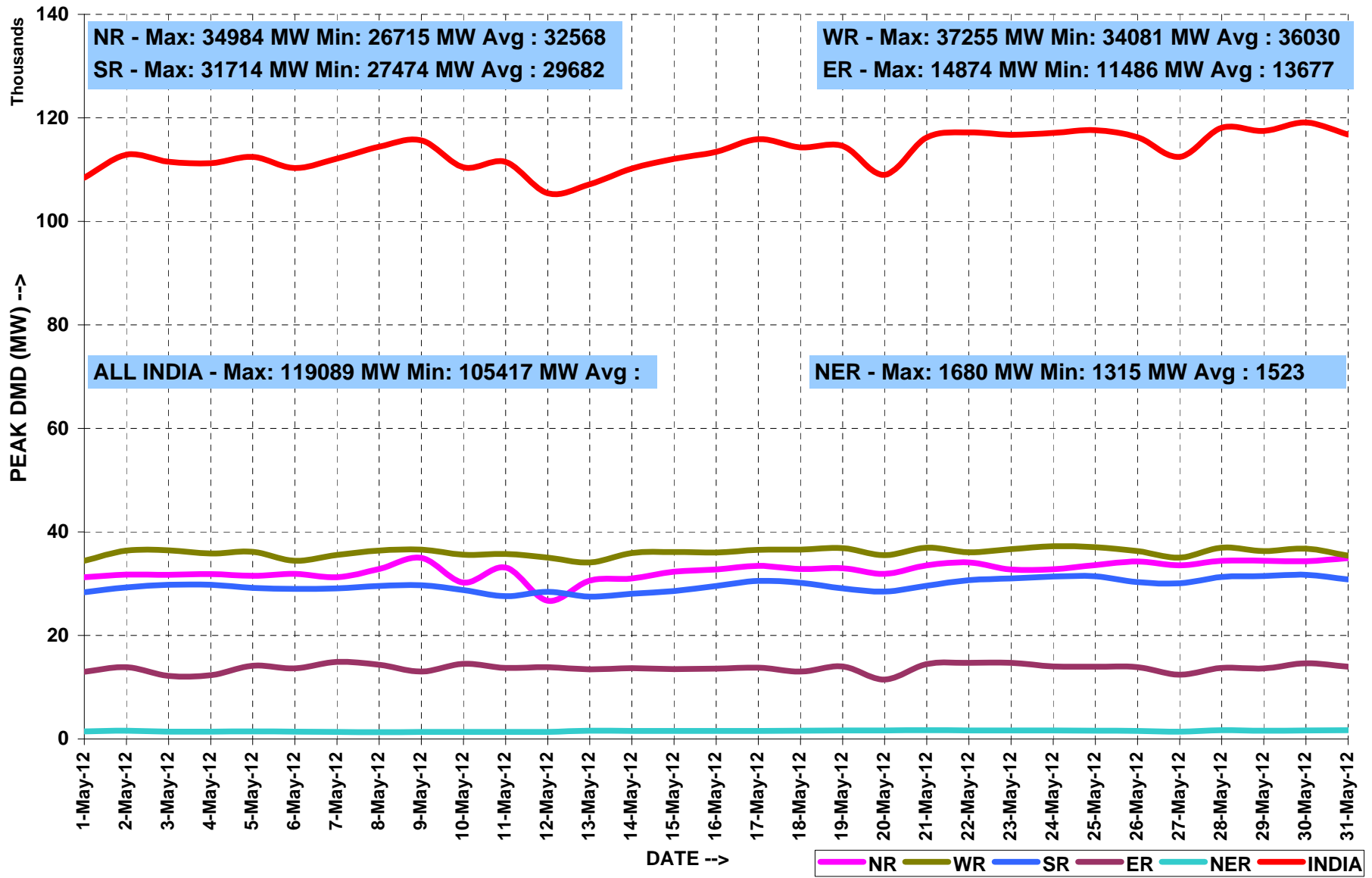
## PEAK DEMAND MET AT NATIONAL LEVEL

MONTH:- MAY 2012

All figures in MW

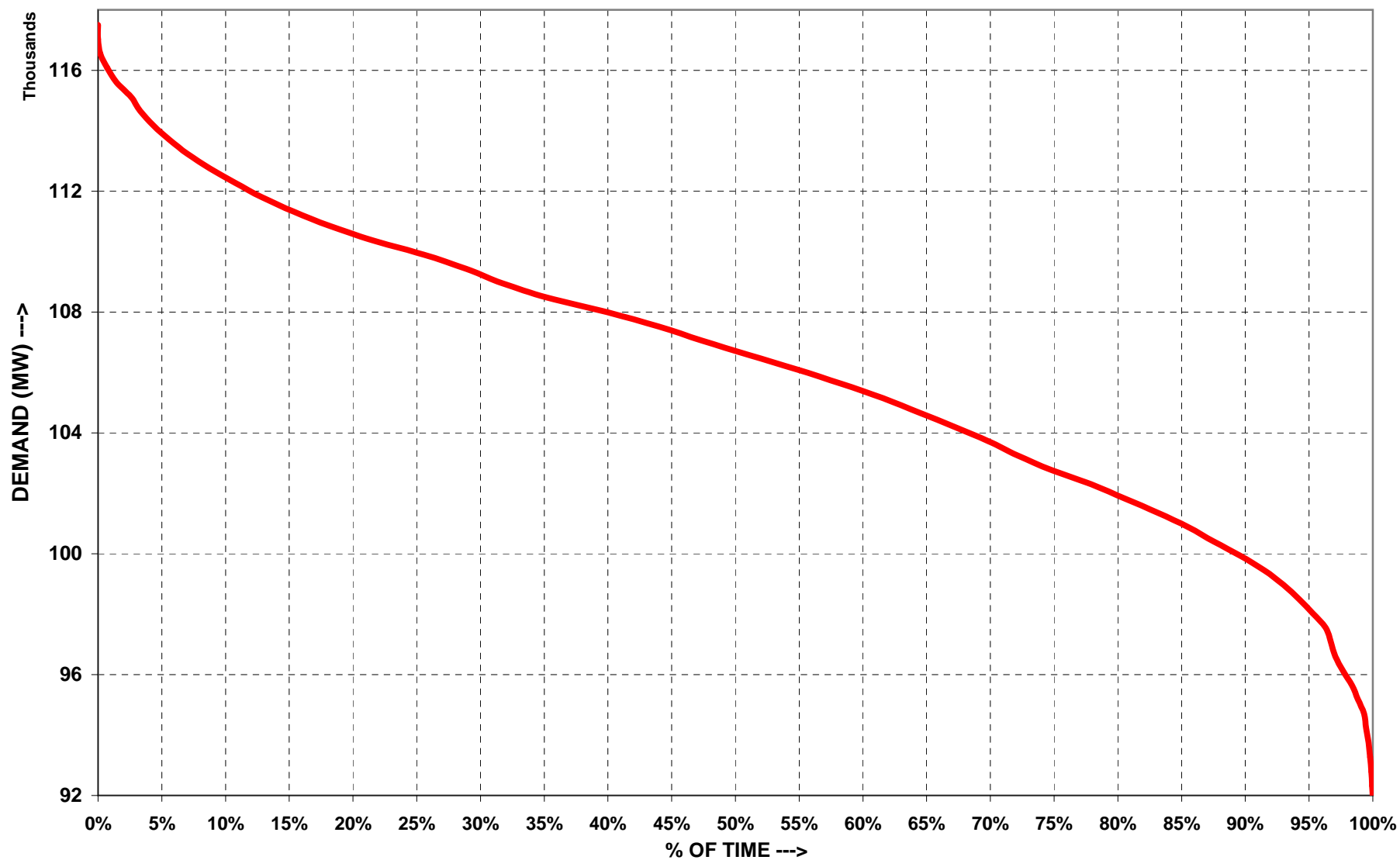
Date	NR	WR	SR	ER	NER	TOTAL
5/1/2012	31259	34431	28325	12966	1442	108423
5/2/2012	31770	36386	29275	13863	1587	112881
5/3/2012	31705	36434	29780	12195	1396	111510
5/4/2012	31870	35816	29796	12325	1418	111225
5/5/2012	31506	36173	29197	14133	1464	112473
5/6/2012	31903	34414	28975	13613	1406	110311
5/7/2012	31252	35539	29099	14874	1365	112129
5/8/2012	32841	36373	29553	14328	1315	114410
5/9/2012	34984	36571	29705	13044	1356	115660
5/10/2012	30216	35609	28743	14508	1352	110428
5/11/2012	33097	35734	27571	13711	1378	111491
5/12/2012	26715	35034	28440	13877	1351	105417
5/13/2012	30605	34081	27474	13437	1587	107184
5/14/2012	31016	35928	28050	13658	1566	110218
5/15/2012	32338	36128	28586	13491	1548	112091
5/16/2012	32733	36014	29568	13563	1547	113425
5/17/2012	33453	36541	30533	13779	1553	115859
5/18/2012	32851	36586	30186	13040	1609	114272
5/19/2012	32953	36860	29071	14025	1645	114554
5/20/2012	31909	35526	28463	11486	1626	109010
5/21/2012	33525	36948	29587	14459	1680	116199
5/22/2012	34089	36075	30672	14724	1626	117186
5/23/2012	32748	36660	30989	14689	1627	116713
5/24/2012	32772	37255	31396	14026	1636	117085
5/25/2012	33570	37029	31427	13968	1601	117595
5/26/2012	34290	36293	30289	13858	1535	116265
5/27/2012	33547	35018	30075	12426	1411	112477
5/28/2012	34430	36970	31291	13709	1667	118067
5/29/2012	34419	36301	31492	13643	1612	117467
5/30/2012	34318	36791	31714	14618	1648	119089
5/31/2012	34937	35411	30808	13941	1669	116766
MAXIMUM	34984	37255	31714	14874	1680	119089
MINIMUM	26715	34081	27474	11486	1315	105417
AVERAGE	32568	36030	29682	13677	1523	113480

## PEAK DEMANDS MET DURING THE MONTH OF MAY' 2012





### ALL INDIA LOAD DURATION CURVE FOR MAY' 2012



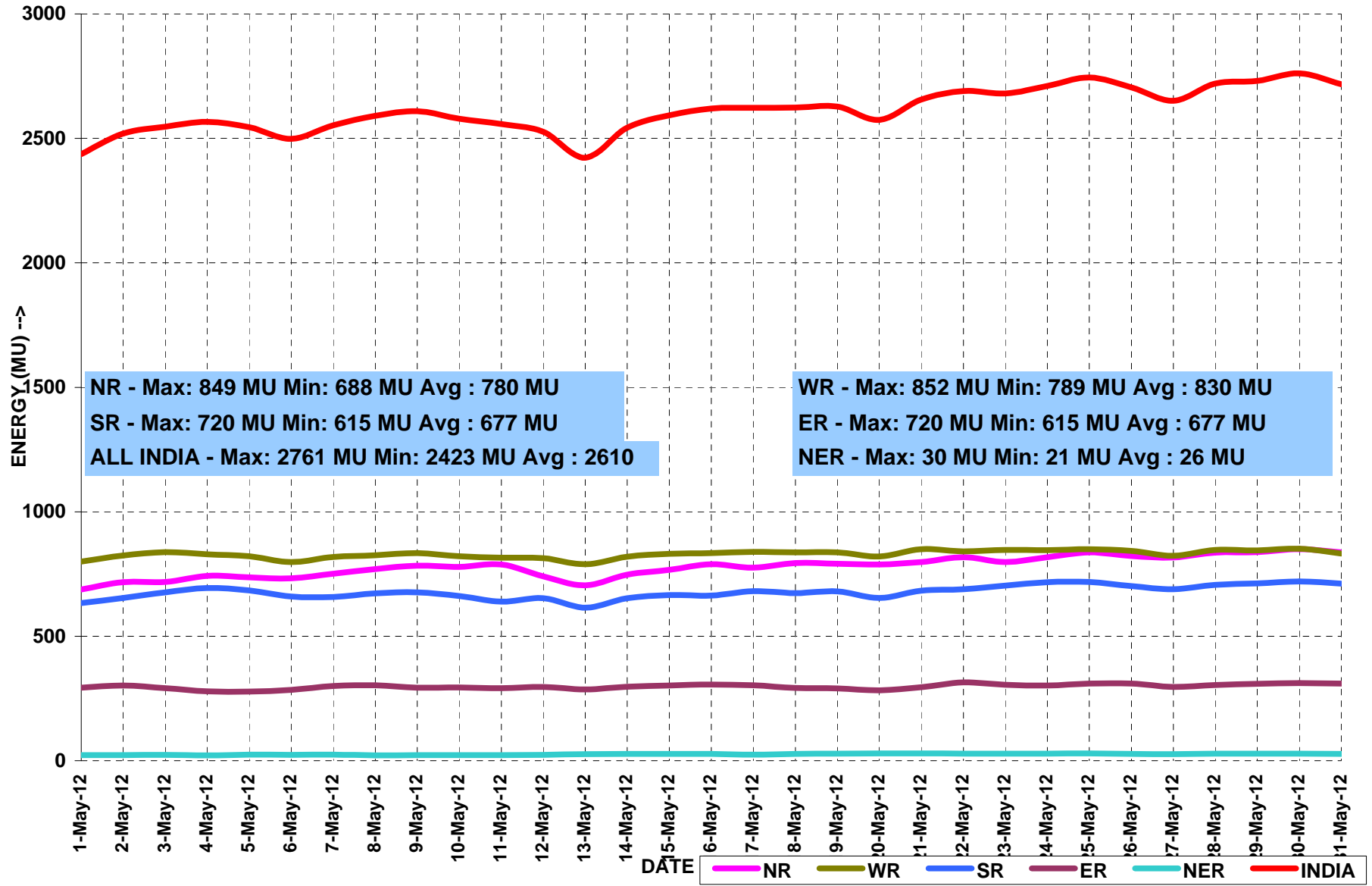
## ENERGY MET AT NATIONAL LEVEL

MONTH:- MAY 2012

All figures in MU

Date	NR	WR	SR	ER	NER	TOTAL
5/1/2012	688	800	633	293	22	2437
5/2/2012	717	824	654	302	23	2520
5/3/2012	718	838	676	291	24	2547
5/4/2012	742	829	694	279	22	2566
5/5/2012	737	822	684	278	24	2545
5/6/2012	733	798	660	285	24	2499
5/7/2012	752	819	658	300	25	2553
5/8/2012	770	825	672	303	21	2591
5/9/2012	783	834	676	293	23	2609
5/10/2012	778	822	662	294	23	2579
5/11/2012	789	815	639	292	23	2557
5/12/2012	741	813	653	296	24	2526
5/13/2012	705	789	615	287	27	2423
5/14/2012	747	819	653	298	27	2543
5/15/2012	767	831	665	303	27	2593
5/16/2012	789	834	664	306	28	2620
5/17/2012	776	839	681	304	24	2623
5/18/2012	794	837	673	292	28	2624
5/19/2012	791	837	680	291	29	2628
5/20/2012	788	820	654	283	29	2574
5/21/2012	798	850	683	296	29	2656
5/22/2012	817	841	689	314	29	2690
5/23/2012	798	847	703	305	28	2680
5/24/2012	817	846	717	302	28	2711
5/25/2012	837	850	718	310	30	2744
5/26/2012	823	843	702	310	27	2705
5/27/2012	816	823	689	296	27	2651
5/28/2012	836	847	706	304	28	2720
5/29/2012	838	844	712	309	28	2731
5/30/2012	849	852	720	312	28	2761
5/31/2012	837	832	711	310	28	2717
<b>TOTAL</b>	<b>24170</b>	<b>25720</b>	<b>20996</b>	<b>9235</b>	<b>806</b>	<b>80923</b>
<b>MAXIMUM</b>	<b>849</b>	<b>852</b>	<b>720</b>	<b>314</b>	<b>30</b>	<b>2761</b>
<b>MINIMUM</b>	<b>688</b>	<b>789</b>	<b>615</b>	<b>278</b>	<b>21</b>	<b>2423</b>
<b>AVERAGE</b>	<b>780</b>	<b>830</b>	<b>677</b>	<b>298</b>	<b>26</b>	<b>2610</b>

## ENERGY MET DURING THE MONTH OF MAY' 2012

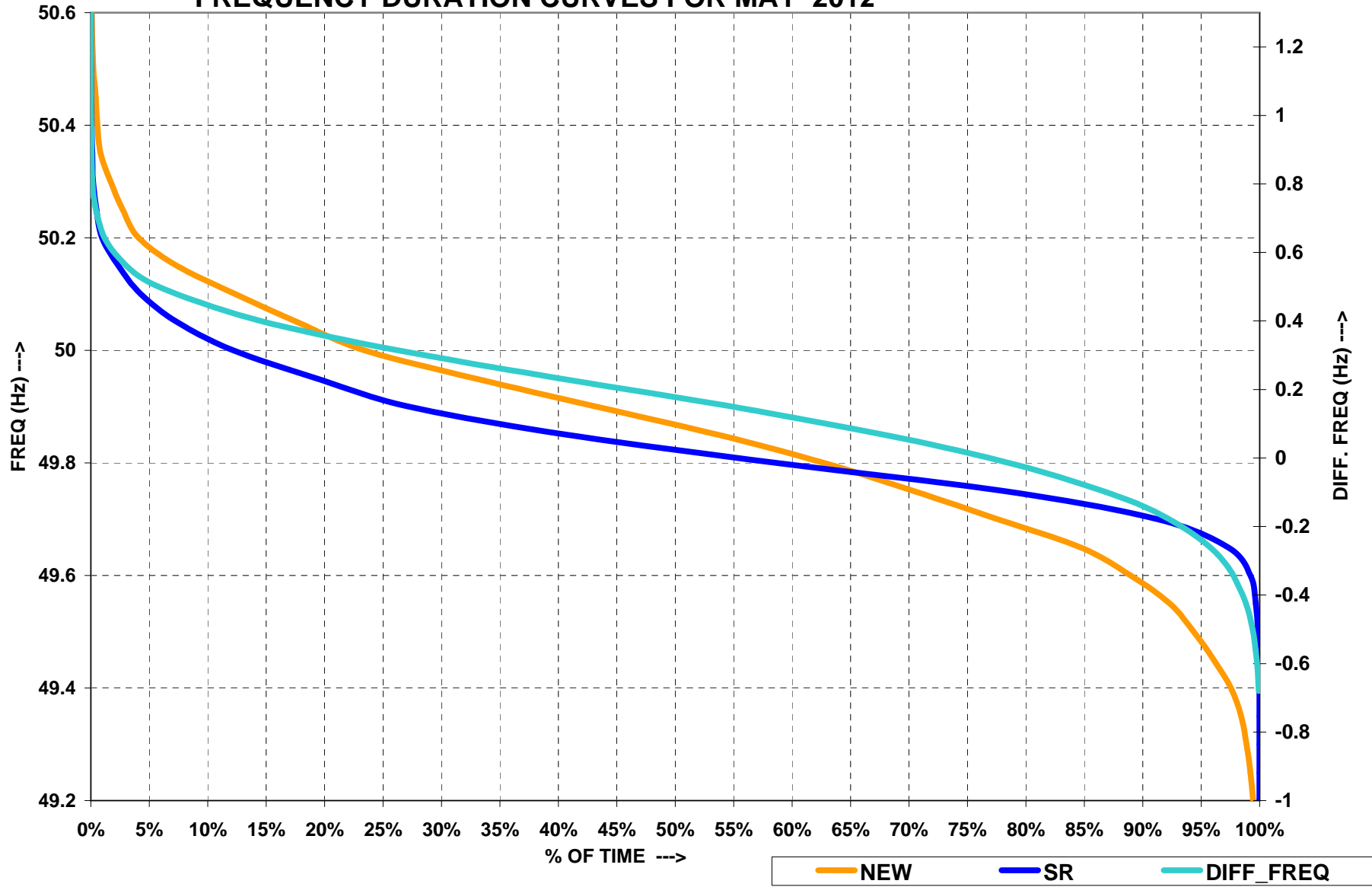


**FREQUENCY PROFILE FOR THE MONTH OF MAY 2012**

<b>SR GRID</b>										
<b>FREQUENCY PROFILE</b>		<b>&lt; 48.5</b>	<b>48.5 - 49.5</b>	<b>&lt; 49.5</b>	<b>49.5 - 50.2</b>	<b>&gt;50.2</b>		<b>Max. Freq</b>	<b>Min. Freq</b>	<b>Avg. Freq</b>
<b>% TIME</b>	<b>Apr-12</b>	0.00	7.79	7.79	91.28	0.93		50.66	48.66	49.69
	<b>May-12</b>	0.00	5.61	5.61	94.01	0.38		50.63	48.81	49.7

<b>NEW GRID</b>										
<b>FREQUENCY PROFILE</b>		<b>&lt; 48.5</b>	<b>48.5 - 49.5</b>	<b>&lt; 49.5</b>	<b>49.5 - 50.2</b>	<b>&gt;50.2</b>		<b>Max. Freq</b>	<b>Min. Freq</b>	<b>Avg. Freq</b>
<b>% TIME</b>	<b>Apr-12</b>	0.00	2.38	2.38	93.68	3.94		50.66	49.08	49.9
	<b>May-12</b>	0.00	10.82	10.82	87.82	1.36		50.75	48.82	49.8

# FREQUENCY DURATION CURVES FOR MAY' 2012



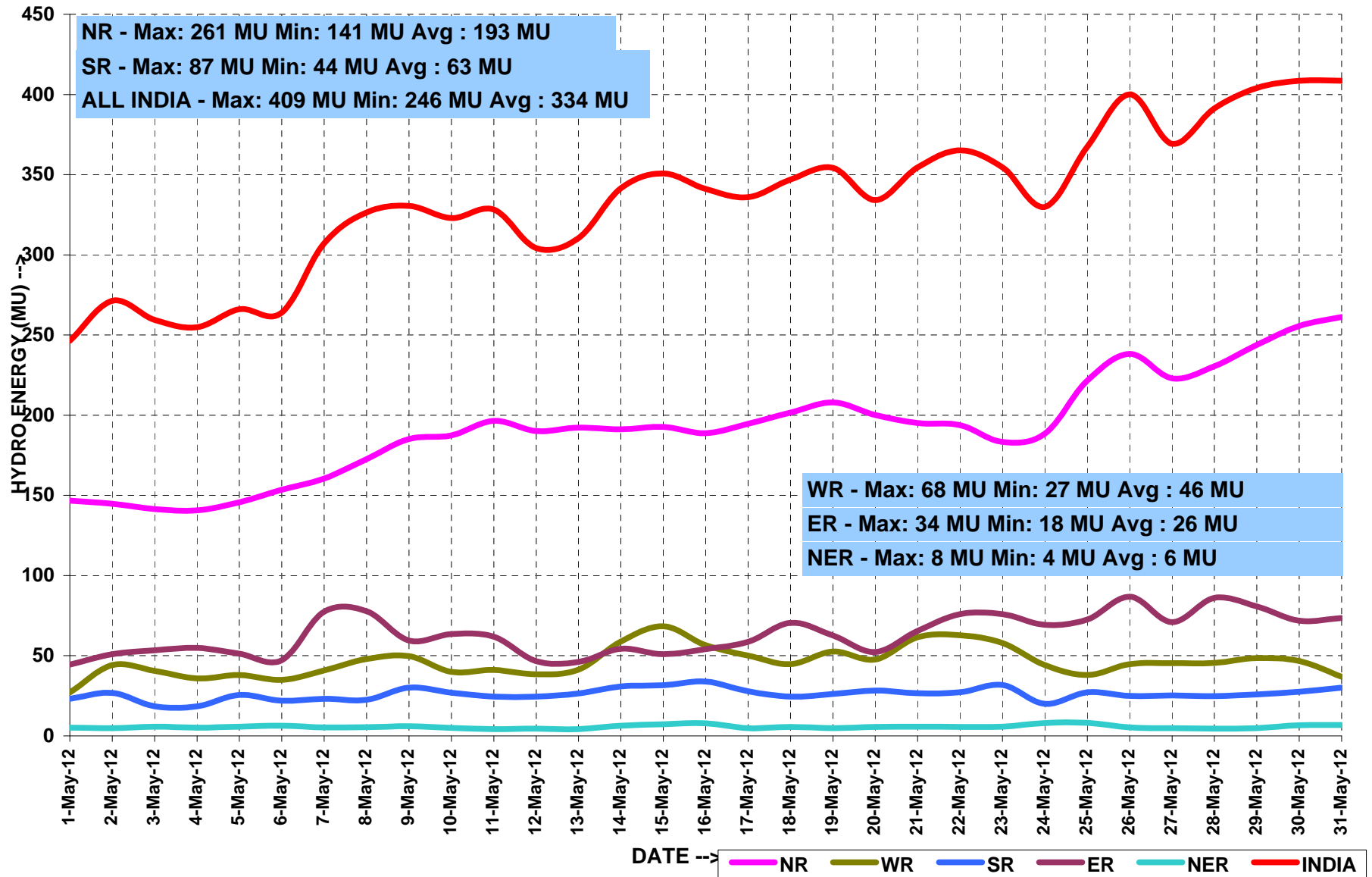
## HYDRO GENERATION AT NATIONAL LEVEL

MONTH:- MAY 2012

All figures in MU

Date	NR	WR	SR	ER	NER	TOTAL
5/1/2012	147	27	44	23	5	246
5/2/2012	145	44	51	27	5	271
5/3/2012	141	41	53	18	6	259
5/4/2012	141	36	55	18	5	255
5/5/2012	146	38	51	26	6	266
5/6/2012	154	35	47	22	6	264
5/7/2012	161	41	77	23	5	307
5/8/2012	173	48	78	23	5	326
5/9/2012	185	50	60	30	6	331
5/10/2012	187	40	64	27	5	323
5/11/2012	197	41	62	25	4	328
5/12/2012	190	38	47	25	5	304
5/13/2012	192	41	46	26	4	310
5/14/2012	191	59	54	31	6	342
5/15/2012	193	68	51	32	7	351
5/16/2012	189	57	54	34	8	341
5/17/2012	195	50	59	28	5	336
5/18/2012	202	45	71	25	6	347
5/19/2012	208	53	63	26	5	354
5/20/2012	200	48	52	28	6	334
5/21/2012	195	62	66	27	6	355
5/22/2012	194	63	76	27	6	365
5/23/2012	183	58	76	32	6	355
5/24/2012	189	44	69	20	8	330
5/25/2012	222	38	73	27	8	367
5/26/2012	238	45	87	25	5	400
5/27/2012	223	45	71	25	5	369
5/28/2012	231	46	86	25	5	391
5/29/2012	244	49	81	26	5	404
5/30/2012	256	47	72	28	7	409
5/31/2012	261	37	74	30	7	409
<b>TOTAL</b>	<b>5969</b>	<b>1430</b>	<b>1969</b>	<b>807</b>	<b>175</b>	<b>10350</b>
<b>MAXIMUM</b>	<b>261</b>	<b>68</b>	<b>87</b>	<b>34</b>	<b>8</b>	<b>409</b>
<b>MINIMUM</b>	<b>141</b>	<b>27</b>	<b>44</b>	<b>18</b>	<b>4</b>	<b>246</b>
<b>AVERAGE</b>	<b>193</b>	<b>46</b>	<b>64</b>	<b>26</b>	<b>6</b>	<b>334</b>

## HYDRO ENERGY DURING THE MONTH OF MAY' 2012



## WIND GENERATION AT NATIONAL LEVEL

MONTH:- MAY 2012

All figures in MU

Date	NR	WR	SR	ER	NER	TOTAL
5/1/2012	6	26	46	...	...	78
5/2/2012	3	21	52	...	...	76
5/3/2012	4	30	55	...	...	89
5/4/2012	2	38	74	...	...	114
5/5/2012	5	35	79	...	...	119
5/6/2012	12	30	52	...	...	94
5/7/2012	10	24	17	...	...	51
5/8/2012	8	16	25	...	...	49
5/9/2012	10	18	27	...	...	55
5/10/2012	10	31	25	...	...	66
5/11/2012	12	24	24	...	...	60
5/12/2012	14	39	53	...	...	106
5/13/2012	9	34	28	...	...	71
5/14/2012	8	28	33	...	...	69
5/15/2012	13	31	47	...	...	90
5/16/2012	21	40	50	...	...	111
5/17/2012	17	36	55	...	...	108
5/18/2012	9	32	40	...	...	80
5/19/2012	9	32	65	...	...	105
5/20/2012	15	33	54	...	...	101
5/21/2012	11	39	65	...	...	115
5/22/2012	4	40	55	...	...	99
5/23/2012	3	42	73	...	...	118
5/24/2012	14	49	93	...	...	156
5/25/2012	26	53	95	...	...	175
5/26/2012	10	50	89	...	...	149
5/27/2012	6	45	93	...	...	144
5/28/2012	10	45	90	...	...	145
5/29/2012	12	41	82	...	...	135
5/30/2012	20	51	103	...	...	174
5/31/2012	24	57	96	...	...	177
<b>TOTAL</b>	<b>334</b>	<b>1109</b>	<b>1833</b>	<b>...</b>	<b>...</b>	<b>3277</b>
<b>MAXIMUM</b>	<b>26</b>	<b>57</b>	<b>103</b>	<b>...</b>	<b>...</b>	<b>175</b>
<b>MINIMUM</b>	<b>2</b>	<b>16</b>	<b>17</b>	<b>...</b>	<b>...</b>	<b>49</b>
<b>AVERAGE</b>	<b>11</b>	<b>36</b>	<b>59</b>	<b>...</b>	<b>...</b>	<b>103</b>



**ACTUAL POWER SUPPLY POSITION - MAY 2012**

REGION	STATE	Requirement/Availability in MU/DAY			Requirement/Availability in MU				Peak Demand/Peak Met in MW			
		Requirement	Energy met	Surplus(+)/ Deficit(-)	Requirement	Energy met	Surplus(+)/ Deficit(-)	% Shortage	Requirement	Peak Demand	Surplus(+)/ Deficit(-)	% Shortage
NR	Chandigarh	5	5	0	164	164	0	0	303	303	0	0
	Delhi	90	90	0	2691	2690	-1	0	5193	5155	-38	1
	Haryana	114	103	-11	3417	3084	-332	10	6638	5445	-1193	18
	H.P.	24	24	0	724	714	-11	1	1189	1189	0	0
	J&K	40	30	-10	1212	909	-303	25	2148	1611	-537	25
	Punjab	129	126	-3	3864	3767	-97	3	7161	7114	-47	1
	Rajasthan	143	139	-4	4293	4168	-125	3	7511	7450	-61	1
	U.P.	271	231	-40	8143	6938	-1205	15	13796	11634	-2162	16
	Uttarakhand	33	31	-2	986	928	-58	6	1700	1620	-80	5
	NFF/Railway	2	2	0	68	68	0	0	100	100	0	0
	<b>TOTAL</b>	<b>781</b>	<b>852</b>	<b>71</b>	<b>23429</b>	<b>25561</b>	<b>2132</b>	<b>-9</b>	<b>36431</b>	<b>40575</b>	<b>4144</b>	<b>10</b>
WR	Gujarat	250	248	-2	7747	7683	-64	-1	11639	11510	-129	-1
	Madhya Pradesh	128	120	-8	3973	3720	-253	-6	7522	6788	-734	-10
	Chhattisgarh	68	67	-1	2096	2071	-25	-1	3243	3123	-120	-4
	Maharashtra	380	368	-12	11770	11410	-360	-3	18240	17173	-1067	-6
	Goa	8	8	0	260	255	-5	-2	473	397	-76	-16
	D&D	6	6	-1	194	177	-17	-9	276	245	-31	-11
	DNH	13	13	0	407	404	-3	-1	585	579	-6	-1
	<b>TOTAL</b>	<b>853</b>	<b>830</b>	<b>-23</b>	<b>26448</b>	<b>25721</b>	<b>-727</b>	<b>-3</b>	<b>39143</b>	<b>37363</b>	<b>-1780</b>	<b>-5</b>
SR	AP-TRANSCO	276	248	-28	8272	7447	-825	-10	11861	11099	-762	-6
	KPTCL	184	164	-20	5511	4920	-591	-11	9394	8148	-1246	-13
	KSEB	62	60	-3	1872	1792	-80	-4	3367	3181	-186	-6
	TNEB	254	222	-32	7605	6649	-956	-13	10968	10491	-477	-4
	PONDY	7	7	0	201	198	-3	-1	322	318	-4	-1
		<b>TOTAL</b>	<b>782</b>	<b>700</b>	<b>-82</b>	<b>23461</b>	<b>21006</b>	<b>-2455</b>	<b>-10</b>	<b>37019</b>	<b>32107</b>	<b>-4912</b>
ER	Bihar	38	34	-38	1190	1058	-132	-11	2500	1726	-774	-31
	JSEB	20	19	-1	605	576	-29	-5	1080	949	-131	-12
	GRIDCO	49	54	5	1510	1663	153	10	2440	2375	-65	-3
	DVC	68	66	-2	2120	2053	-67	-3	3470	3264	-206	-6
	West Bengal	117	134	17	3615	4140	525	15	6564	7044	480	7
	<b>TOTAL</b>	<b>292</b>	<b>306</b>	<b>15</b>	<b>9040</b>	<b>9490</b>	<b>450</b>	<b>5</b>	<b>16697</b>	<b>14614</b>	<b>-2083</b>	<b>-12</b>
NER	Arunachal Pradesh	1	1	0	41	37	-4	0	100	98	-2	0
	Assam	17	16	-1	524	483	-41	0	1104	1093	-12	0
	Manipur	1	1	0	35	33	-2	0	110	107	-3	0
	MeSEB	5	4	-1	151	109	-41	0	271	256	-15	0
	Mizoram	1	1	0	32	29	-2	0	65	64	-1	0
	Nagaland	1	1	0	34	30	-3	0	90	86	-4	0
	Tripura	3	3	0	90	85	-5	0	185	183	-2	0
	<b>TOTAL</b>	<b>29</b>	<b>26</b>	<b>-3</b>	<b>906</b>	<b>807</b>	<b>-99</b>	<b>0</b>	<b>1924</b>	<b>1887</b>	<b>-38</b>	<b>0</b>

**SCHEDULE AND DRAWAL OF CONSTITUENTS - MAY 2012**

REGION	STATE	SCHEDULE (MU)	ACTUAL DRAWAL (MU)	Over drawal(+)/ Under Drawal(-) (MU)	SCHEDULE (MU/DAY)	ACTUAL DRAWAL (MU/DAY)	Over drawal(+)/ Under Drawal(-) (MU/DAY)
NR	Chandigarh	161	169	8	5	5	0
	Delhi	2145	1811	-335	69	58	-11
	Haryana	1417	1630	213	46	53	7
	H.P.	347	318	-29	11	10	-1
	J&K	513	517	4	17	17	0
	Punjab	1999	2065	65	64	67	2
	Rajasthan	1403	1671	268	45	54	9
	U.P.	2922	3779	857	94	122	28
	Uttarakhand	382	461	79	12	15	3
	NFF/Railway	70	70	0	2	2	0
WR	Gujarat	1596	1236	-359	51	40	-12
	Madhya Pradesh	1835	1695	-141	59	55	-5
	Maharashtra	3737	3608	-129	121	116	-4
	Chhattisgarh	505	432	-73	16	14	-2
	Goa	234	237	4	8	8	0
	D&D	174	174	0	6	6	0
	D&NH	430	404	-26	14	13	-1
SR	APTRANSCO	1756	1879	123	57	61	4
	KPTCL	1100	1097	-3	35	35	0
	KSEB	935	1065	130	30	34	4
	TNEB	1893	1909	17	61	62	1
	PONDY	242	198	-44	8	6	-1
	GOA(SR)	54	48	-6	2	2	0
ER	Bihar	1166	1088	-78	38	35	-3
	JSEB	331	310	-21	11	10	-1
	DVC	-505	-464	41	-16	-15	1
	GRIDCO	757	765	8	24	25	0
	Sikkim	689	607	-82	22	20	-3
	WBSEB	32	30	-2	1	1	0
NER	Arunachal Pradesh	30	40	9	1	1	0
	Assam	321	321	0	10	10	0
	Manipur	38	36	-2	1	1	0
	MeSEB	65	60	-6	2	2	0
	Mizoram	26	27	1	1	1	0
	Nagaland	28	35	7	1	1	0
	Tripura	29	24	-5	1	1	0

## Inter-Regional Exchanges (2012-2013)

All figs. in MUs  
ALL FIGURES ARE IN MUS

		Apr-12	May-12	Jun-12	Jul-12	Aug-12	Sep-12	Oct-12	Nov-12	Dec-12	Jan-13	Feb-13	Mar-13	Total FINANCIAL YEAR 2012-13 (Till May '12)
*	WR-NR	HVDC Vindhyachal B/B	22.31	146.15										168.46
		220KV Aur.-Mal.	0.33	0.00										0.33
		220KV Kota/Morak-Badod	6.94	40.25										47.19
		400KV Agra-Gwalior	460.85	610.16										1071.01
		400KV Kankroli-Jerda	4.20	20.06										24.26
		400KV Bhinmal-Jerda	3.30	40.92										44.22
		400KV Barh - Balia	114.24	214.97										329.21
*	ER-NR	HVDC Sasaram B/B (Bypass wef 1 DEC'08)	22.34	63.33										85.67
		400KV Mzp-Gkp	309.11	484.33										793.44
		220/132kV	105.31	98.91										204.22
		400KV Patna-Balia	224.55	320.90										545.45
		400KV Biharshariff-Balia	208.57	293.31										501.88
*	NR-WR	HVDC Vindhyachal B/B	70.00	17.02										87.02
		220KV Aur.-Mal.	30.53	32.46										62.99
		220KV Kota/Morak-Badod	7.12	0.67										7.79
		400KV Agra-Gwalior	0.00	0.00										0.00
		400KV Kankroli-Jerda	86.94	14.45										101.39
		400KV Bhinmal-Jerda	68.76	8.67										77.43
		400KV Barh - Balia	0.00	0.00										0.00
*	NR-ER	220/132kV	27.60	26.92										54.53
		400KV Mzp-Gkp	0.00	0.00										0.00
		HVDC Sasaram B/B (Bypass wef 1 DEC'08)	64.08	22.02										86.10
		400KV Patna-Balia	0.00	0.00										0.00
		400KV Biharshariff-Balia	0.00	0.00										0.00
*	NR-Nepal		19.17	11.91										31.08
**	ER-SR	HVDC-Gaz.	157.65	108.00										265.65
		HVDC-Tal.	1571.43	1605.35										3176.78
**	SR-ER	HVDC-Gaz.	1.64	0.00										1.64
***	ER-WR	AC links	190.04	206.00										396.04
***	WR-ER	AC links	423.07	426.00										849.07
***	ER-NER	AC links	250.18	232.00										482.18
***	NER-ER	AC links	0.55	0.00										0.55
**	SR-WR	Chandrapur HVDC	0.00	0.00										0.00
**	WR-SR	Chandrapur HVDC	564.51	542.48										1106.99
	<b>TOTAL</b>		<b>5015</b>	<b>5587</b>	<b>0</b>	<b>0</b>	<b>0</b>	<b>0</b>	<b>0</b>	<b>0</b>	<b>0</b>	<b>0</b>	<b>0</b>	<b>10603</b>
	ER-SR	Tal.-Kol. Interconnector	227.01	247.0										474.01
	<b>Net IR</b>	<b>(Excl. Tal.-Il)</b>	<b>3217</b>	<b>3735</b>	<b>0</b>	<b>0</b>	<b>0</b>	<b>0</b>	<b>0</b>	<b>0</b>	<b>0</b>	<b>0</b>	<b>0</b>	<b>6952</b>
	** Data is taken from SRLDC													
	*** Data is taken from ERLDC													

**STOA (BILATERAL AND COLLECTIVE) & UI BILLING DETAILS- MAY' 2012**

**BILATERAL SHORT TERM OPEN ACCESS**

Description	Name of RLDC	No. of Transactions	Energy Approved(MU)
MAY'12	NR	350	1077
	WR	126	1158
	SR	73	346
	ER	152	791
	NER	23	107
<b>TOTAL</b>		<b>724</b>	<b>3479</b>

**COLLECTIVE SHORT TERM OPEN ACCESS**

MONTH	NO. of Buyers/Sellers	Approved Energy (MU)
APR'12	1654	1337
MAY'12	1535	1478
<b>TOTAL</b>	<b>3189</b>	<b>2815</b>

**MONTHLY UI BILLING DETAILS**

REGION	(RS. IN CRORES)				
	NORTH	WEST	EAST	SOUTH	NORTH EAST
(Upto 29th APR'12)	342	249	161	69	17
(Upto 27th MAY'12)	937	630	363	135	32

**POWER MARKET INFORMATION**  
**EXCHANGES THROUGH POWER EXCHANGES ( IEX & PXI) - MAY' 2012**

S. No.	STATE	Through Power Exchange in MU	
		Sale	Purchase
1	Punjab	0.00	232.68
2	Haryana	0.00	77.87
3	Rajasthan	31.58	333.77
4	Delhi	209.04	3.13
5	Uttar Pradesh	0.00	130.99
6	Uttarakhand	0.00	17.92
7	Himachal Pradesh	233.18	1.68
8	J & K	7.13	0.00
9	UT Chandigarh	1.36	5.26
10	AD Hydro	27.68	0.00
11	KW	95.48	0.00
12	Shree Cement	1.71	0.00
13	Nathpa Jhakri	31.70	0.00
14	Baira Siul HEP(BS0)	0.00	0.00
15	Chamera-I HEP(CM1)	0.00	0.00
16	Chamera-II HEP(CM2)	0.00	0.00
17	Dhauliganga HEP(DG0)	0.00	0.00
18	Dulahasti HEP(DU0)	0.00	0.00
19	Salal HEP(SL0)	0.00	0.00
20	Sewa-II NHPC(SW2)	0.00	0.00
21	Tanakpur HEP(TP0)	0.00	0.00
22	Uri HEP(UR0)	0.00	0.00
23	MP	108.73	7.74
24	Maharashtra	29.29	87.28
25	Gujarat	160.94	328.47
26	Chattisgarh	114.13	0.00
27	Goa	0.00	0.00
28	Daman and Diu	0.00	0.00
29	Dadra & Nagar Haveli	0.00	0.00
30	JD	11.79	0.00
31	LANCO AMK	104.18	0.00
32	ACB India Limited	7.97	0.00
33	Jindal Steel and Power Ltd	29.95	0.00
34	Andhra Pradesh	47.45	28.81
35	Karnataka	0.00	0.82
36	Kerala	0.81	30.47
37	Tamilnadu	0.26	117.79
38	Pondicherry	0.00	0.00
39	Goa	0.00	0.00
40	LANCO, KONDPLY	0.00	0.00
41	SIMHAPURI	57.23	0.00
42	West Bengal	52.62	25.90
43	Orissa	0.00	12.14
44	Bihar	0.00	0.00
45	Jharkhand	0.00	14.41
46	Sikkim	7.24	0.00
47	DVC	11.15	0.00
48	STERLITE	80.28	0.00
49	Maithon Power Ltd	9.03	0.00
50	Arunachal Pradesh	0.00	0.00
51	Assam	1.98	18.34
52	Manipur	0.00	0.00
53	Meghalaya	3.02	2.62
54	Mizoram	0.00	0.00
55	Nagaland	0.00	0.00
56	Tripura	0.28	0.00
57	ASSAM GBPP	0.55	0.00
58	KOPILI	0.00	0.00
59	Agartala GTPP(AG0)	0.32	0.00

## IMPORTANT EVENTS / DISTURBANCES – May 2012

NER grid was synchronized with NEW Grid through 220 kV Birpara(ER)-Salakati(NER) (D/C) only as 400 kV Bongaigaon-Binaguri(D/C) was out of service since 03-05-12 due to tower collapse. At 1020 hrs the 220 kV Birpara-Salakati I tripped from Salakati end and after about 3 minutes the 2<sup>nd</sup> circuit also tripped. Due to this the NER system was isolated from NEW grid and it collapsed on load generation mismatch. Tripura was first restored with help of Agartala gas power station followed by Mizoram and South Assam within half hour. Then at 1140 hrs Manipur power was restored with assistance from Tripura and Loktak HE. Meanwhile Lower Assam was restored by synchronizing Birpara-Salakati line-I at 1058 hrs and Assam/Arunachal /Nagaland grid was gradually restored. At 1219 hrs NEW grid along with part of Assam system was synchronized with rest of 132 kV system of NER. The disturbance is of Category GD-V.

## **IMPORTANT ELEMENTS COMMISSIONED DURING May 2012**

<b>SL. NO</b>	<b>ELEMENT</b>	<b>VOLTAGE IN KV</b>	<b>DATE OF CHARGING</b>
<b>1</b>	In WR, Wardha S/S ICT#3(765/400 KV) was taken in service for 1 <sup>st</sup> time at 1642 hours.	765	04/05/2012
<b>2</b>	In ER, 400 KV Andal-Jamshedpur was taken in service for 1 <sup>st</sup> time at 1751 hours.	400	06/05/2012
<b>3</b>	In ER, 400 KV Mweramundali-Talcher#1 was LILoed at GKEL at 2000 hours.	400	07/05/2012
<b>4</b>	In ER, Andal Unit # 1(500 MW) was taken in service for 1 <sup>st</sup> time at 0000 hours.	400	14/05/2012
<b>5</b>	In ER, Rihand Unit # 8(500 MW) was taken in service for 1 <sup>st</sup> time at 1036 hours.	400	19/05/2012
<b>6</b>	In WR, 400 KV Wardha-Warora(MSEB) was charged for 1 <sup>st</sup> time at 1545 hours.	400	19/05/2012
<b>7</b>	In NR, 400 KV Fatehabad-Khedar-II was LILoed at Nuhiawali at 1925 hours.	400	22/05/2012
<b>8</b>	In SR, Simhadri Unit # 4(500 MW) was taken in service for 1 <sup>st</sup> time at 1829 hours	400	23/05/2012
<b>9</b>	In WR, Rajgarh S/S 125 MVar Bus-Reactor#1 was taken in service for 1 <sup>st</sup> time at 1829 hours	400	24/05/2012
<b>10</b>	In NR, Moga S/S ICT#2(765/400 KV) was taken in service for 1 <sup>st</sup> time at 1801 hours from 400 KV side.	400	28/05/2012
<b>11</b>	In NR, Balia S/S 125 MVar Bus-Reactor#3 was taken in service for 1 <sup>st</sup> time at 1825 hours	400	28/05/2012
<b>12</b>	In WR, 765 KV Moga-Bhiwani -I was charged for 1 <sup>st</sup> time at 2100 hours	765	29/05/2012
<b>13</b>	In NR, Agra S/S 125 MVar Bus-Reactor#1 was taken in service for 1 <sup>st</sup> time at 2130 hours	400	29/05/2012
<b>14</b>	In NR, Moga S/S Bus-Reactor#1 & Bus-Reactor#2 was taken in service for 1 <sup>st</sup> time at 1330 hours & 1232 hours.	765	30/05/2012
<b>15</b>	In WR, 765 KV Wardha-Seoni-I was charged for 1 <sup>st</sup> time at 1715 hours	765	30/05/2012
<b>16</b>	In NR, Fatehpur(PG) S/S Line-Reactor#1 was taken in service for 1 <sup>st</sup> time at 1701 hours	765	30/05/2012

<b>17</b>	In NR, Agra(PG) S/S ICT#1(765/400 KV) was taken in service for 1 <sup>st</sup> time at 2155 hours.	765	30/05/2012
<b>18</b>	In NR, 400 KV Neemrana-Manesar-I & II were charged for 1 <sup>st</sup> time at 1544 & 1625 hours respectively.	400	31/05/2012
<b>19</b>	In NR, Manesar S/S ICT#1 was taken in service for 1 <sup>st</sup> time at 1710 hours.	400	31/05/2012



## VOLTAGE PROFILE - MAY 2012

Sl. No.	REGION	SUBSTATION	Maximum(kV)	Minimum(kV)
1	ER	FARAKKA	426	407
2		KAHALGAON	433	408
3		TALCHER	416	400
4		BINAGURI	427	390
5		PURNEA	425	390
6		MUZAFFARPUR	426	387
7		JAMSHEDPUR	431	413
8		RENGALI	411	396
9		JEYPORE	431	390
1	NR	NALLAGARH	429	389
2		BHIWADI	436	392
3		BALLABGARH	427	393
4		ALLAHABAD	430	393
5		HISSAR	420	396
6		BAWANA	427	392
7		KANPUR	421	389
1	WR	ASOJ	419	400
2		ITARSI	427	403
3		JETPUR	422	381
4		KARAD	429	398
5		KASOR	421	405
6		BINA	431	399
7		GWALIOR	430	396
8		DHULE	432	402

## VOLTAGE PROFILE - MAY 2012

SI. No.	REGION	SUBSTATION	Maximum(kV)	Minimum(kV)
1	SR	SRIPERUMPUDUR	414	361
2		MADRAS	426	360
3		NEYVELI	417	389
4		SALEM	418	375
5		BANGALORE	420	367
6		HOSUR	416	375
7		RAMAGUNDAM	416	400
8		VIJAYAWADA	430	409
9		TIRIVANDRUM	421	368
10		HYDERABAD	427	397
1	NER	MISA	432	385
2		BALIPARA	417	382
3		BONGAIGAON	417	382
4		SALAKATI	238	215
5		HAFLONG	140	124
6		AIZWAL	137	120
7		KUMARGHAT	136	125
8		IMPHAL	141	119
9		Khlieriat_PG	141	125