



पावर सिस्टम ऑपरेशन कॉरपोरेशन लिमिटेड

(पावरग्रिड की पूर्ण स्वामित्व प्राप्त सहायक कंपनी)

POWER SYSTEM OPERATION CORPORATION LIMITED

(A wholly owned subsidiary of POWERGRID)



पंजीकृत एवं केन्द्रीय कार्यालय: बी-9, प्रथम तल, कुतुब इंस्टीट्यूशनल एरिया, कटवारिया सराय, नई दिल्ली - 110016
Registered & Corporate Office : B-9, 1st Floor, Qutub Institutional Area, Katwaria Sarai, New Delhi - 110016
Website : www.posoco.in, www.nldc.in, Tel: 011-26536832, 26524522, Fax: 011-26524525, 26536901

संदर्भ संख्या:-POSOCO/NLDC/GM/ 114

दिनांक: 26.08.2014

सेवा में,

वितरण सूची के अनुसार

विषय:- निष्पादन रिपोर्ट - जुलाई 2014

महोदय,

आई०ई०जी०सी०-2010 के प्रावधान के अनुसार, - जुलाई 2014 माह की अखिल भारतीय प्रणाली की निष्पादन रिपोर्ट

धन्यवाद

भवदीय

Upt. O. (En) 26/8/14
(एन नललारसन)

उप महाप्रबंधक

(रा०भा०प्रे०के०)

संलग्नक: मासिक प्रणाली रिपोर्ट

वितरण सूची

Distribution List

1. सचिव, के.वि.नि.आ. तीसरा एवं चौथा तल, चंद्रलोक भवन, 36, जनपथ, नई दिल्ली - 110001
Secretary, CERC, 3rd & 4th Floor, Chanderlok Building, 36, Janpath, New Delhi-110001
2. मुख्य अभियंता, (जी एम), के. वि. प्रा., सेवा भवन, आर. के. पुरम, नई दिल्ली - 110066
Chief Engineer (GM), CEA, Sewa Bhavan, R.K.Puram, New Delhi-110066
3. सदस्य सचिव, ऊ. क्षे. वि. स., 18/ ए, शहीद जीत सिंह सनसनवाल मार्ग, नई दिल्ली - 110016
Member Secretary, NRPC, 18/A, SJSS Marg, Katwaria Sarai, New Delhi-110016
4. सदस्य सचिव, प. क्षे. वि. स., एफ-3, एम आई डी सी क्षेत्र, अंधेरी, मुंबई - 400093
Member Secretary, WRPC, F-3, MIDC Area, Andheri (East), Mumbai-400093
5. सदस्य सचिव, द. क्षे. वि. स., 29, रेस कोर्स क्रॉस रोड, बंगलुरु - 560009
Member Secretary, SRPC, 29, Race Course Cross Road, Bangalore-560009
6. सदस्य सचिव, पू. क्षे. वि. स., 14, गोल्फ क्लब रोड, कोलकाता - 700033
Member Secretary, ERPC, 14, Golf Club Road, Kolkata-700033
7. सदस्य सचिव, ऊ. पू. क्षे. वि. स., मेघालय राज्य आवसीय वित्त सहकारी समिति लिमिटेड भवन, नॉग्रिम हिल्स, शिलॉंग - 793003
Member Secretary, NERPC, Meghalaya State Housing Finance Cooperative Society Ltd.
Building, Nongrim Hills, Shillong -793003
8. महाप्रबंधक, पू. क्षे. भा. प्रे. के., 14, गोल्फ क्लब रोड, कोलकाता - 700033
General Manager, ERLDC, 14, Golf Club Road, Kolkata-700033
9. महाप्रबंधक, प. क्षे. भा. प्रे. के., एफ-3, एम आई डी सी क्षेत्र, अंधेरी, मुंबई - 400093
General Manager, WRLDC, F-3, MIDC Area, Andheri (East), Mumbai-400093
10. महाप्रबंधक, ऊ. क्षे. भा. प्रे. के., 18/ ए, शहीद जीत सिंह सनसनवाल मार्ग, नई दिल्ली - 110016
General Manager, NRLDC, 18/A, SJSS Marg, Katwaria Sarai, New Delhi-110016
11. कार्यपालक निदेशक, द. क्षे. भा. प्रे. के., 29, रेस कोर्स क्रॉस रोड, बंगलुरु - 560009
Executive Director, SRLDC, 29, Race Course Cross Road, Bangalore-560009
12. महाप्रबंधक, ऊ. पू. क्षे. भा. प्रे. के., डोंगतिह, लोअर नॉग्रह, लापलंग, शिलॉंग - 793006
General Manager, NERLDC, Dongtiah, Lower Nongrah, Laplang, Shillong-793006



POWER SYSTEM OPERATION CORPORATION LIMITED

(A wholly owned subsidiary of POWERGRID)

पावर सिस्टम ऑपरेशन कारपोरेशन लिमिटेड

NATIONAL LOAD DESPATCH CENTRE –राष्ट्रीय भार प्रेषण केन्द्र

मासिक ऑपरेशन रिपोर्ट

Monthly
Operation Report



जुलई 2014

पावर सिस्टम ऑपरेशन कॉर्पोरेशन लिमिटेड
राष्ट्रीय भार प्रेषण केंद्र, नई दिल्ली

POWER SYSTEM OPERATION CORPORATION LTD
NATIONAL LOAD DESPATCH CENTRE, NEW DELHI



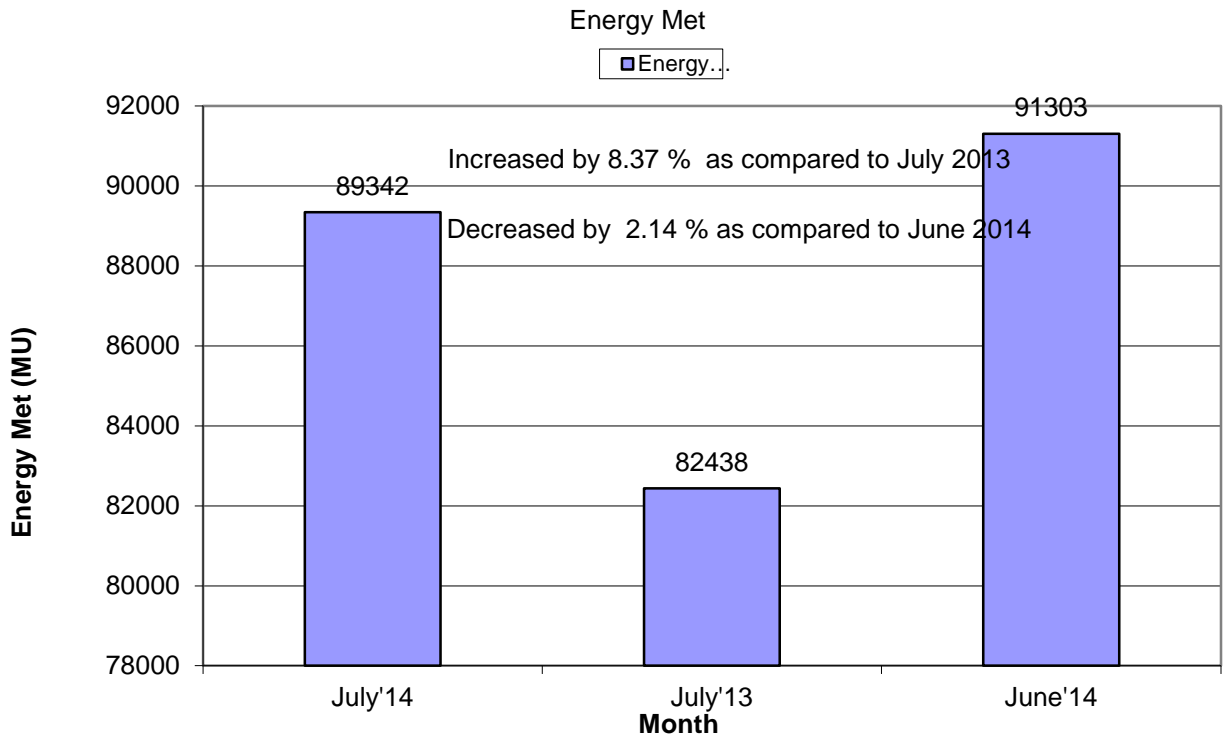
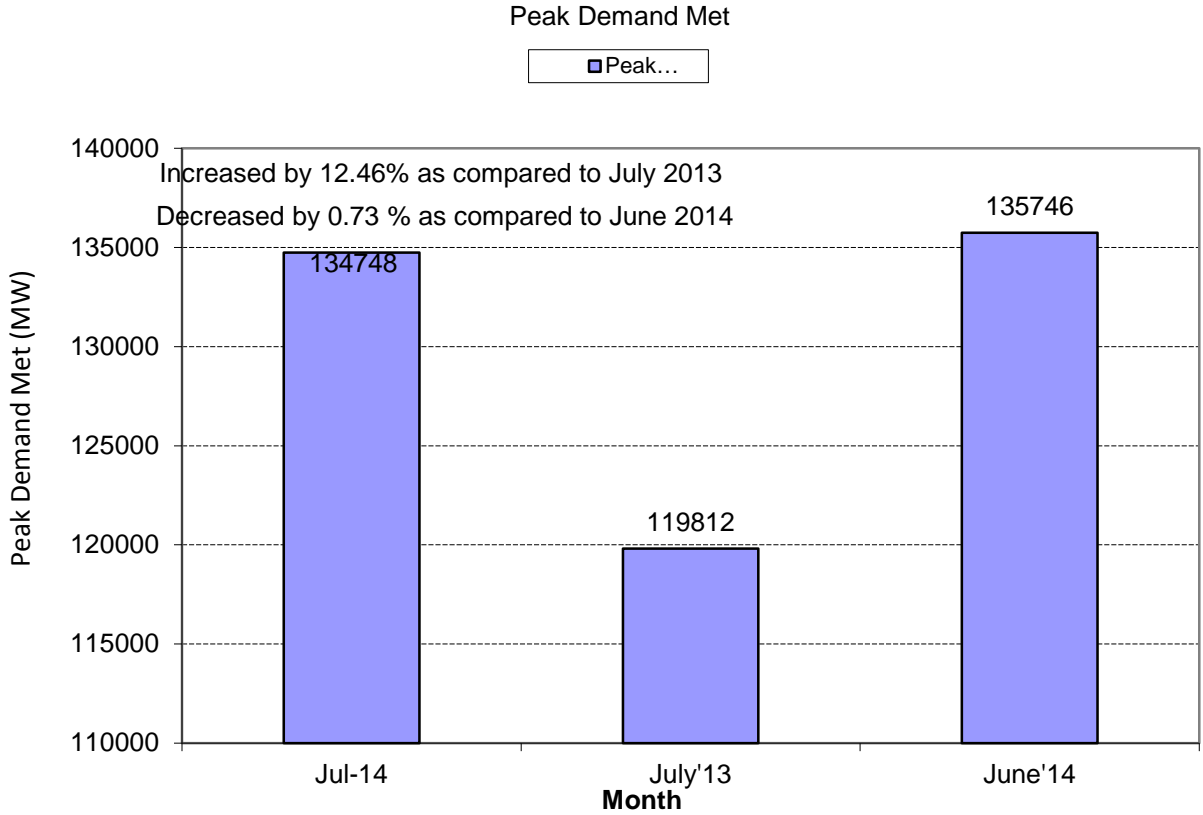
माह जुलाई 2014 के लिए प्रचालन निष्पादन रिपोर्ट
OPERATIONAL PERFORMANCE REPORT FOR THE
MONTH OF JULY 2014

पृष्ठसूची CONTENTS

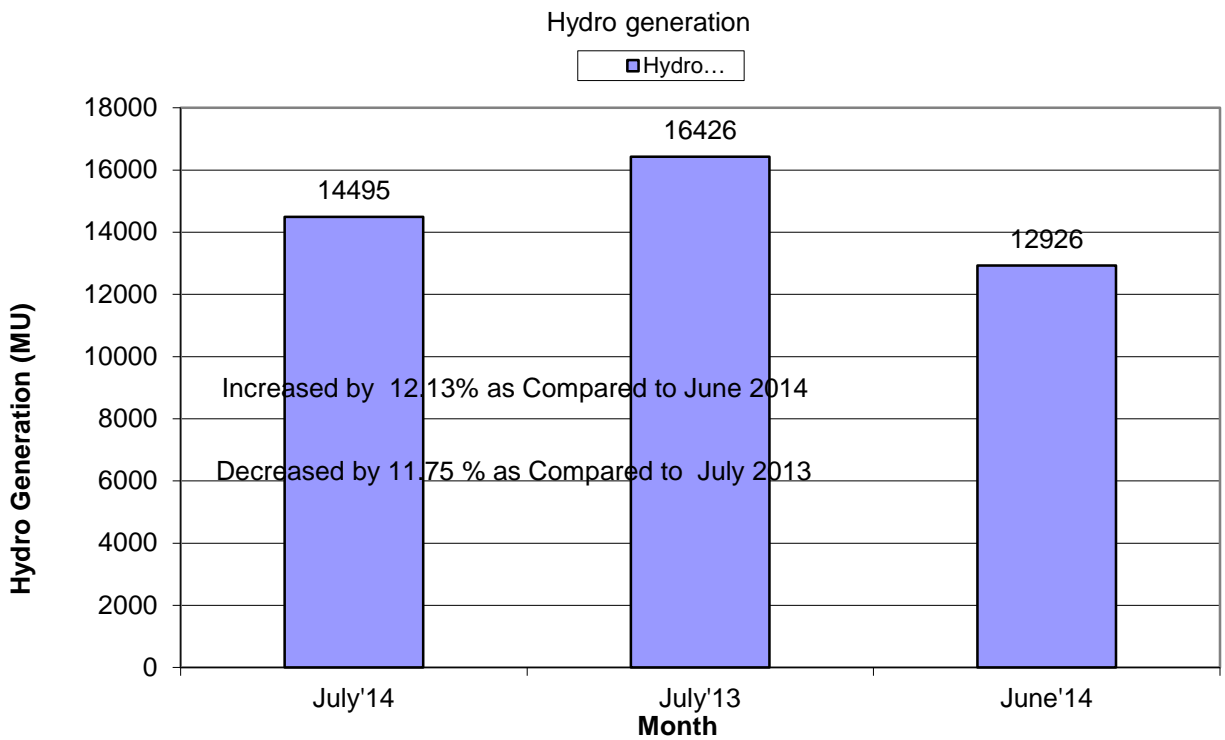
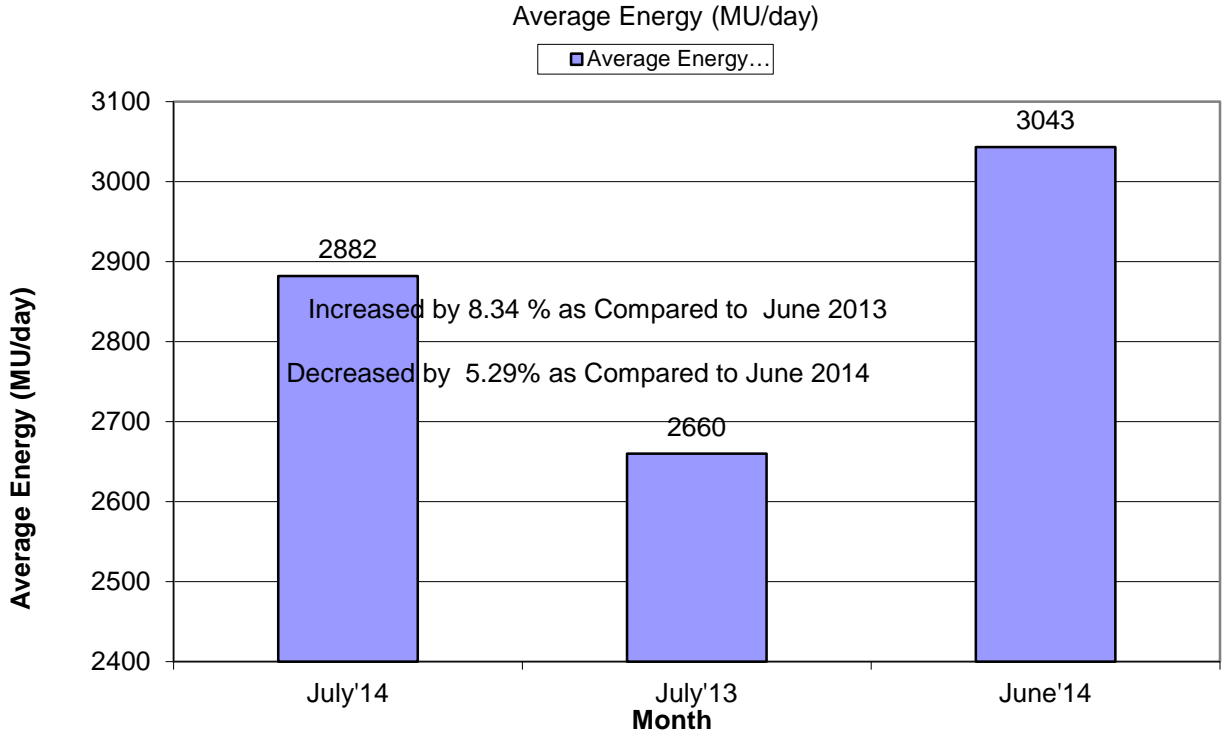
1. माह जून 2014 की सारांश रिपोर्ट SUMMARY OF REPORT FOR THE MONTH OF JUNE' 2014	1-4
2. क्षेत्रवार स्थापित विद्युत क्षमता REGION WISE INSTALLED CAPACITY	5
3. राष्ट्रीय स्तर पर संध्यकालीन शिखर मांगपूर्ति PEAK DEMAND MET AT NATIONAL LEVEL	6-8
4. राष्ट्रीय स्तर पर विद्युत ऊर्जा खपत ENERGY CONSUMPTION AT NATIONAL LEVEL	9-10
5. फ्रिक्वेंसी रूपरेखा FREQUENCY PROFILE	11-13
6. राष्ट्रीय स्तर पर जल विद्युत ऊर्जा उत्पादन HYDRO GENERATION AT NATIONAL LEVEL	14-15
7. राष्ट्रीय स्तर पर पन विद्युत ऊर्जा उत्पादन WIND GENERATION AT NATIONAL LEVEL	16
8. ऊर्जा आपूर्ति की वास्तविक स्थिति ACTUAL POWER SUPPLY POSITION	17
9. शिखर मांग आवश्यकता एवं आपूर्ति की पिछले वर्ष के जून माह से तुलना ENERGY REQUIREMENT & MET COMPARISON WITH JUN'2013	18
10. ऊर्जा आवश्यकता एवं आपूर्ति की पिछले वर्ष के जून माह से तुलना PEAK DEMAND REQUIREMENT & MET COMPARISON WITH JUN'2013	19
11. क्षेत्रीय स्तर पर शिड्यूल एवं ड्रावल SCHEDULE & DRAWAL AT REGIONAL LEVEL	20
12. अंतर क्षेत्रीय विनिमय INTER-REGIONAL EXCHANGES	21-26
13. अंतर राष्ट्रीय विद्युत विनिमय INTER-NATIONAL EXCHANGES	27
14. एसटीओए (द्विपक्षीय एवं सामूहिक) एवं यू आई का ब्यौरा BILATERAL & COLLECTIVE SHORT-TERM OPEN ACCESS & UI DETAILS	28
15. पावर मार्केट की सूचना POWER MARKET INFORMATION	29-30

16. अक्षय ऊर्जा प्रमाण - पत्र प्रक्रिया RENEWABLE ENERGY CERTIFICATE MECHANISM	31-33
17. मुख्य घटनाये एवं डिसटरबेनसेज IMPORTANT EVENTS/DISTURBANCES	34-35
18. नये कमीशंड पारेषण तत्व NEW ELEMENTS COMMISSIONED	36
19. विभव रूपरेखा VOLTAGE PROFILE	37

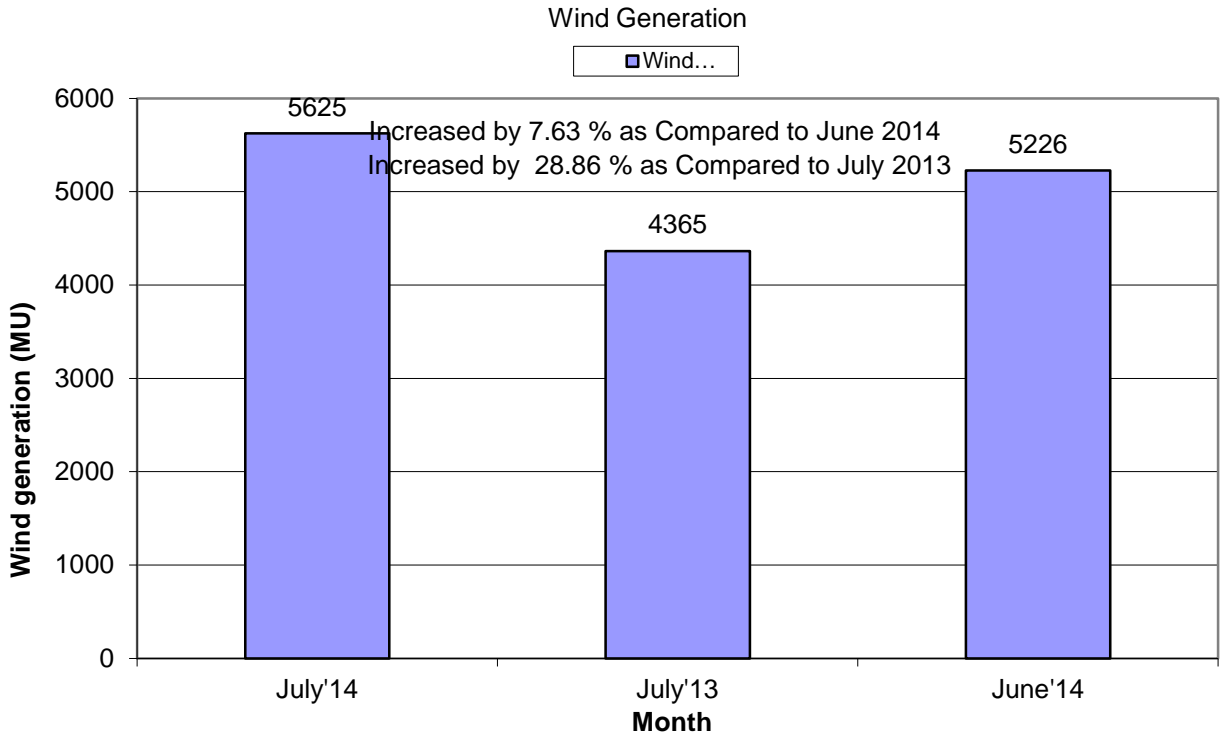
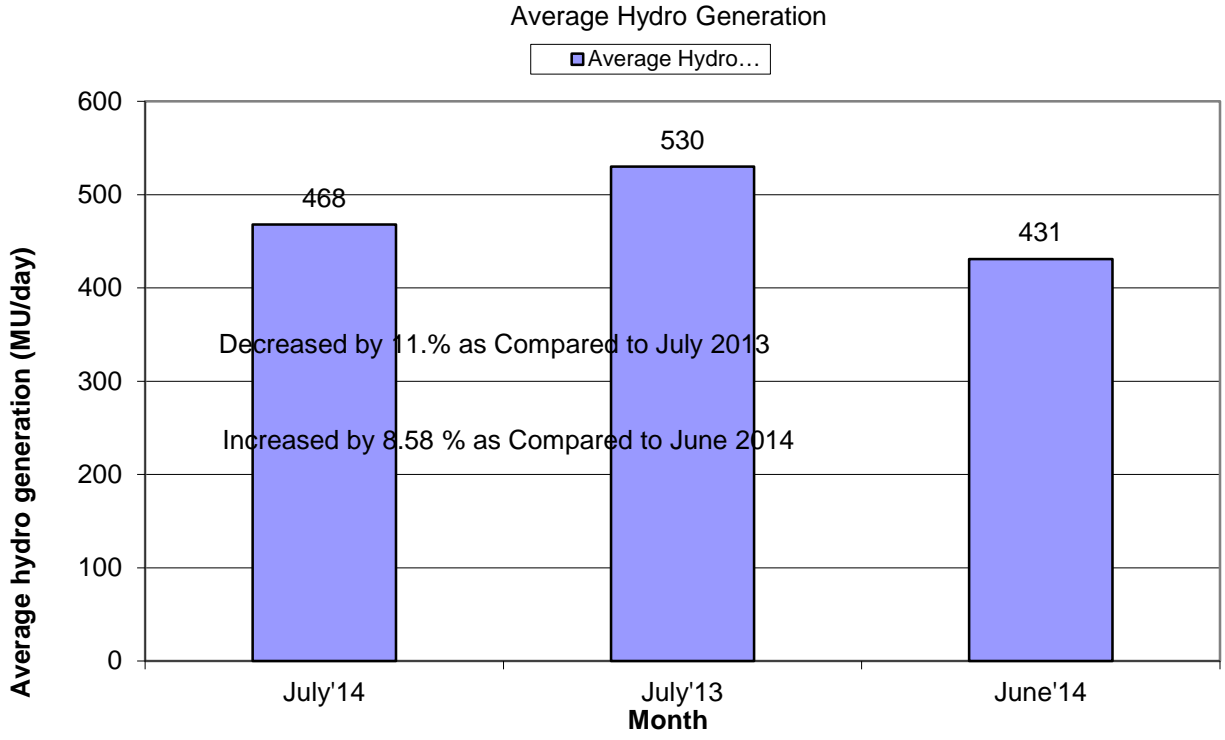
1. SUMMARY OF REPORT FOR THE MONTH OF JULY 2014



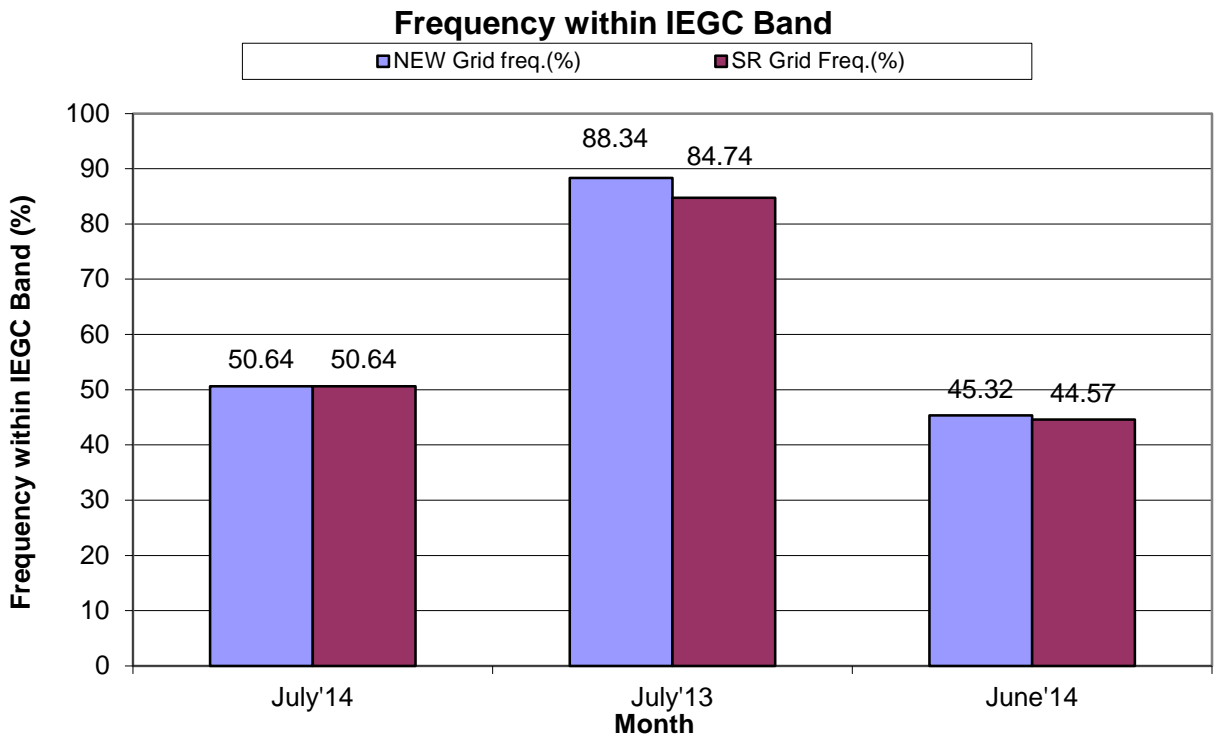
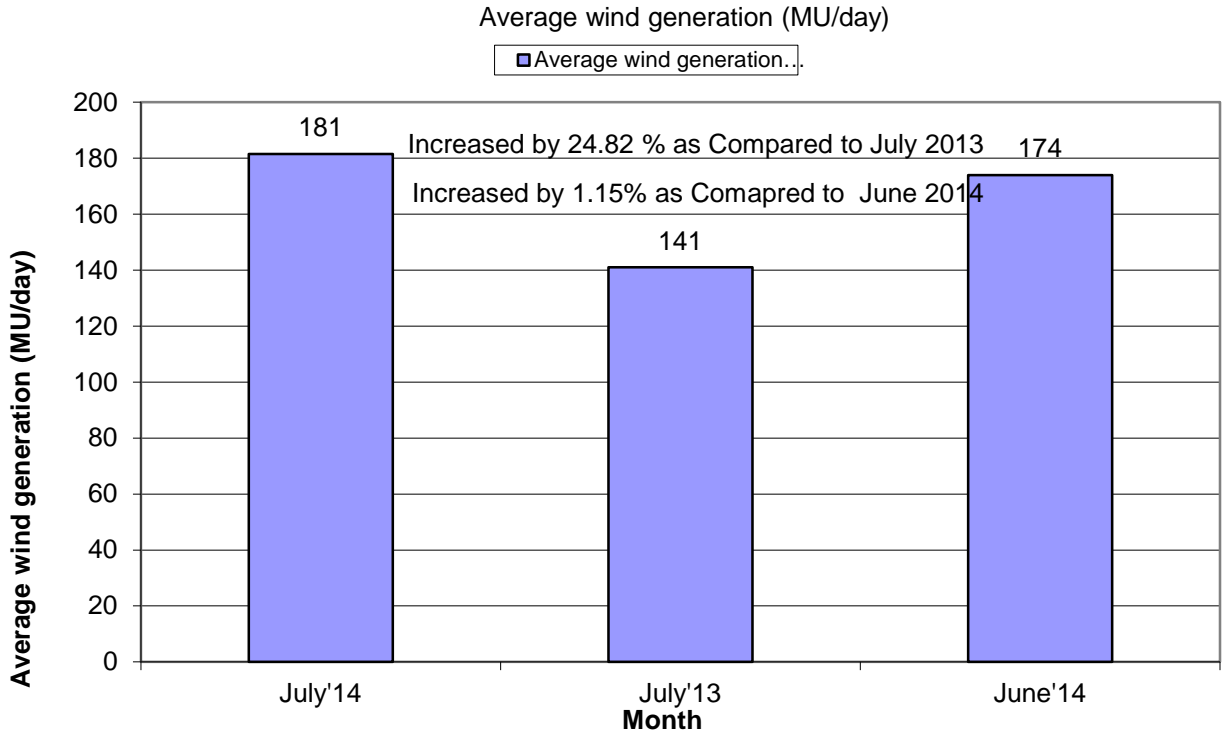
1. SUMMARY OF REPORT FOR THE MONTH OF JULY 2014



1. SUMMARY OF REPORT FOR THE MONTH OF JULY 2014



1. SUMMARY OF REPORT FOR THE MONTH OF JULY 2014



Note: IEGC Frequency band changed from 49.7 -50.2 to 49.9-50.05 wef 17th Feb 2014

(2) ALL INDIA REGIONWISE INSTALLED CAPACITY

As on 31.07.2014

(All figures are in MW)

S No	Region	THERMAL				NUCLEAR	HYDRO	RES @ MNRE	GRAND TOTAL
		COAL	GAS	DIESEL	TOTAL				
1	NR	39144	5331	13	44488	1620	16598	5936	68642
2	WR	57465	10915	17	68397	1840	7448	11271	88956
3	SR	26583	4963	8939	32485	1320	11398	13785	58987
4	ER	25928	190	17	26135	0	4113	433	30681
5	NER	60	1209	143	1411	0	1242	256	2910
6	ISLANDS	0	0	70	70	0	0	11	81
		149178	22608	9200	172986	4780	40799	31691	250257

Remarks: Data taken from CEA website

**3. राष्ट्रीय स्तर पर संध्याकालीन शिखर विधुत मांग पूर्ति
PEAK DEMAND MET AT NATIONAL LEVEL**

माह:- जुलाई 2014

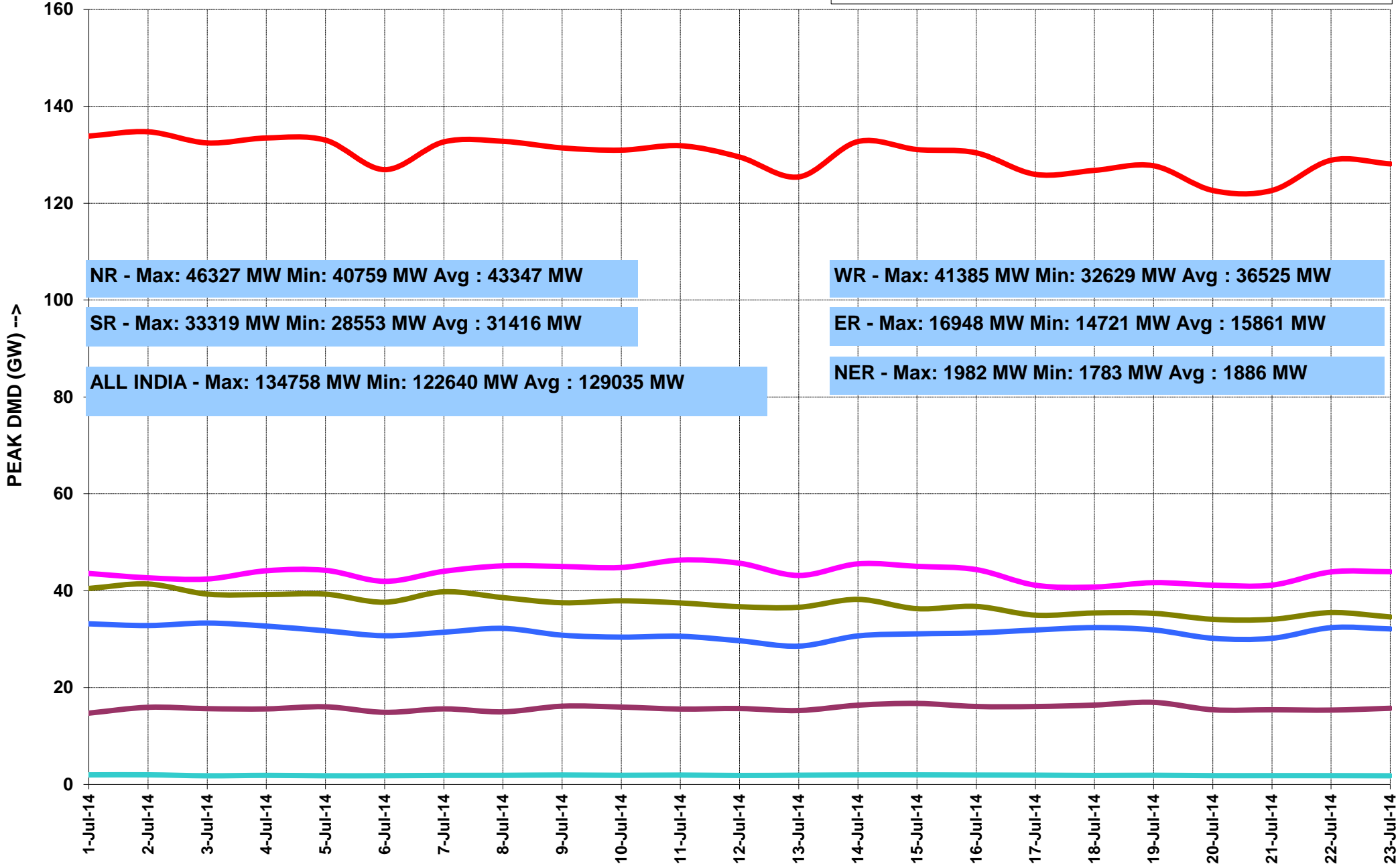
MONTH:- July 2014

सभी आंकड़े मेगावाट में All figures in MW

दिनांक Date	ऊत्तरी क्षे. NR	पश्चिमी क्षे. WR	दक्षिणी क्षे. SR	पूर्वी क्षे. ER	पूर्वोत्तर क्षे. NER	कुल TOTAL
01-Jul-14	43560	40462	33157	14721	1970	133870
02-Jul-14	42662	41385	32804	15925	1982	134758
03-Jul-14	42413	39298	33319	15642	1783	132455
04-Jul-14	44121	39206	32691	15592	1870	133480
05-Jul-14	44208	39289	31719	16029	1786	133031
06-Jul-14	41936	37622	30697	14885	1798	126938
07-Jul-14	44005	39776	31424	15601	1862	132667
08-Jul-14	45130	38577	32219	14989	1877	132792
09-Jul-14	45002	37516	30815	16153	1945	131431
10-Jul-14	44790	37913	30410	15970	1882	130965
11-Jul-14	46327	37474	30588	15563	1930	131882
12-Jul-14	45675	36693	29662	15670	1847	129547
13-Jul-14	43142	36578	28553	15261	1901	125435
14-Jul-14	45545	38207	30664	16359	1959	132735
15-Jul-14	45027	36286	31088	16722	1970	131093
16-Jul-14	44359	36751	31283	16089	1933	130415
17-Jul-14	41135	34949	31885	16080	1912	125961
18-Jul-14	40759	35407	32384	16383	1853	126786
19-Jul-14	41665	35328	31905	16948	1890	127736
20-Jul-14	41150	34091	30172	15413	1814	122640
21-Jul-14	41150	34091	30172	15413	1814	122640
22-Jul-14	43874	35484	32371	15345	1812	128886
23-Jul-14	43928	34584	32115	15723	1783	128133
24-Jul-14	42281	34522	31241	15781	1899	125724
25-Jul-14	42569	34459	32452	15476	1958	126914
26-Jul-14	43411	34381	32334	16123	1868	128117
27-Jul-14	43404	34751	31608	15973	1848	127584
28-Jul-14	42752	32629	29622	16425	1968	123396
29-Jul-14	41880	35024	31839	16496	1955	127194
30-Jul-14	42588	34359	31200	16312	1871	126330
31-Jul-14	43319	35172	31499	16633	1936	128559
उच्चतम MAXIMUM	46327	41385	33319	16948	1982	134758
निम्नतम MINIMUM	40759	32629	28553	14721	1970	122640
औसत AVERAGE	43347	36570	31413	15835	1885	129051
अब तक का उच्चतम All Time Max.	46237	41896	36126	16979	2013	135746
दिनांक Date	11.07.14	26.04.14	24.03.14	22.04.14	11.10.13	30.06.14

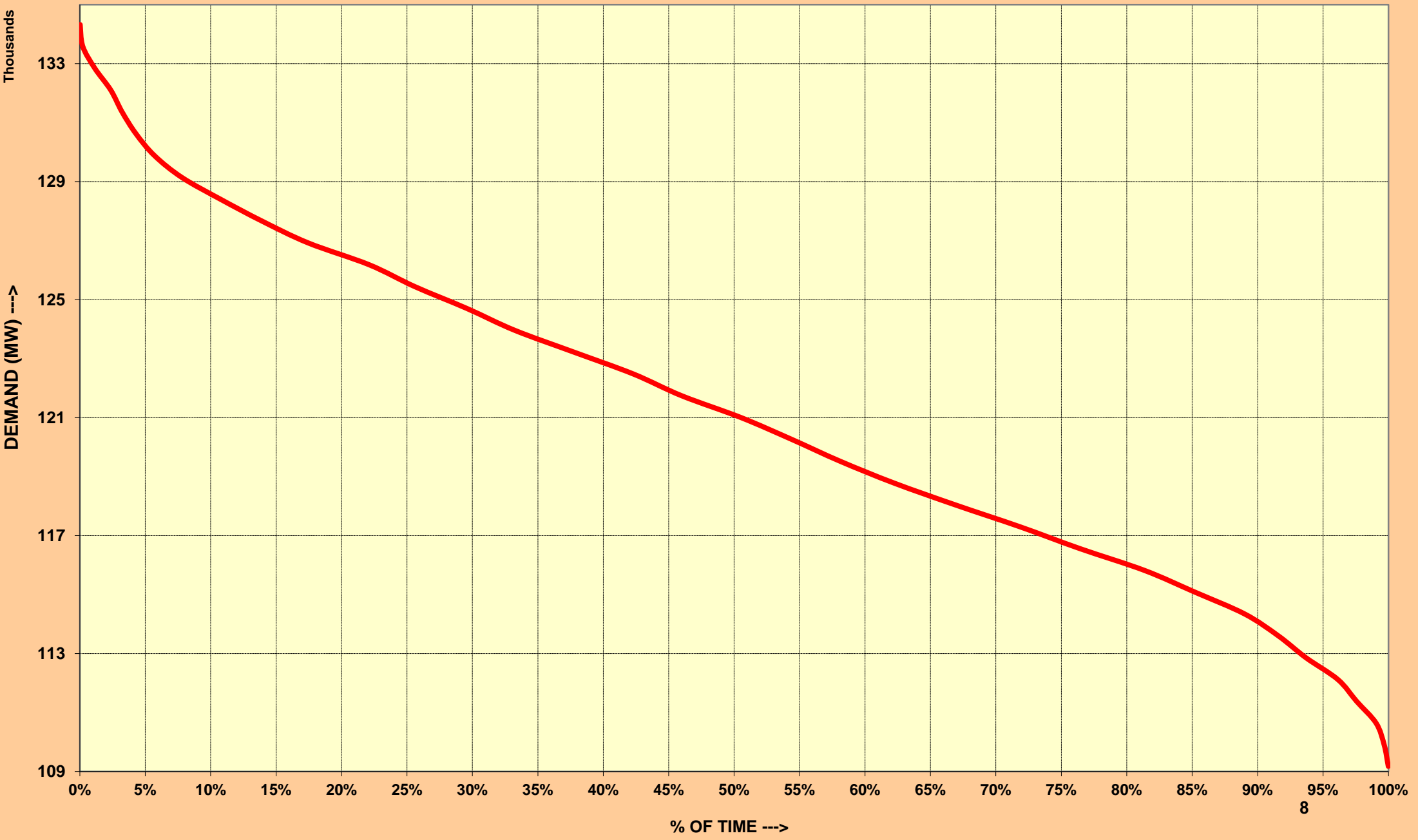
नोट : सभी आंकड़े 1900 बजे की मांगपूर्ति पर आधारित हैं । Note: The above figures corresponds to value at 1900 Hrs

PEAK DEMANDS MET DURING THE MONTH OF JULY' 2014



DATE -->

ALL INDIA LOAD DURATION CURVE FOR JULY' 2014



4. राष्ट्रीय स्तर पर विद्युत ऊर्जा आपूर्ति ENERGY MET AT NATIONAL LEVEL

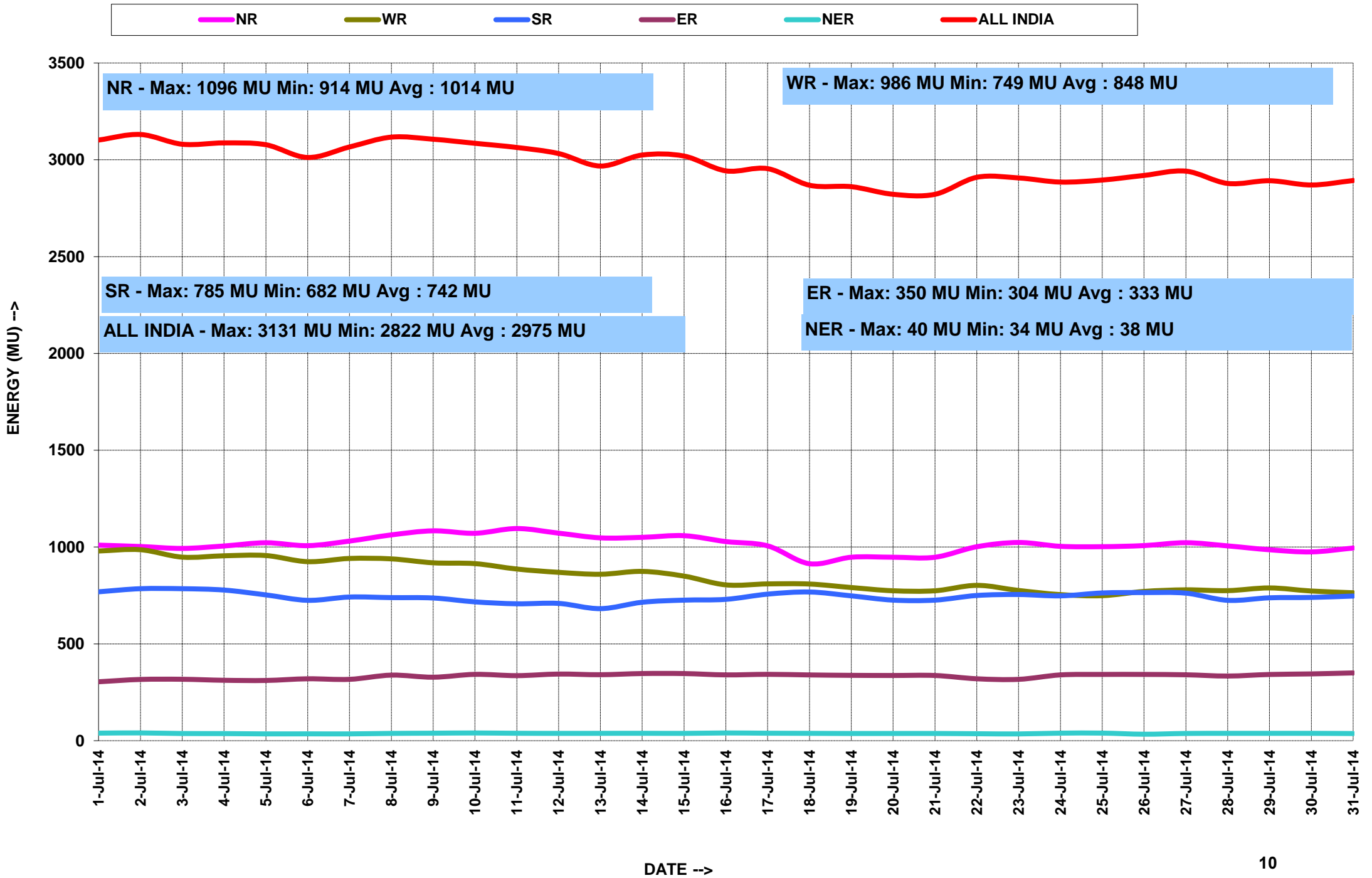
माह:- जुलई 2014

MONTH:- July 2014

सभी आंकड़े मिलियन यूनिट में All figures in MU

दिनांक Date	उत्तरी क्षे. NR	पश्चिमी क्षे. WR	दक्षिणी क्षे. SR	पूर्वी क्षे. ER	पूर्वोत्तर क्षे. NER	कुल TOTAL
01-Jul-14	1010	980	769	304	39	3102
02-Jul-14	1003	986	785	316	40	3131
03-Jul-14	993	948	785	317	37	3080
04-Jul-14	1006	955	778	312	37	3087
05-Jul-14	1022	956	753	311	35	3078
06-Jul-14	1007	925	725	320	35	3012
07-Jul-14	1031	941	742	317	35	3066
08-Jul-14	1063	939	739	339	38	3117
09-Jul-14	1084	919	737	328	39	3106
10-Jul-14	1071	914	717	343	40	3085
11-Jul-14	1096	887	707	336	38	3064
12-Jul-14	1072	870	709	344	38	3032
13-Jul-14	1048	860	682	341	38	2968
14-Jul-14	1050	874	715	347	38	3025
15-Jul-14	1059	850	726	347	38	3019
16-Jul-14	1028	805	730	340	40	2943
17-Jul-14	1006	810	757	343	39	2954
18-Jul-14	914	809	768	340	38	2869
19-Jul-14	948	791	748	338	37	2861
20-Jul-14	948	774	726	337	37	2822
21-Jul-14	948	774	726	337	37	2822
22-Jul-14	1002	802	750	320	36	2910
23-Jul-14	1024	776	755	317	35	2906
24-Jul-14	1004	754	748	340	39	2885
25-Jul-14	1002	749	763	342	39	2895
26-Jul-14	1008	771	765	342	34	2919
27-Jul-14	1023	779	762	340	37	2942
28-Jul-14	1006	775	725	334	38	2878
29-Jul-14	986	789	738	342	38	2892
30-Jul-14	975	773	740	345	38	2870
31-Jul-14	995	764	747	350	37	2893
कुल TOTAL	30434	25535	22270	9977	1128	89342
उच्चतम MAXIMUM	1096	986	785	350	40	3131
निम्नतम MINIMUM	914	749	682	304	34	2822
औसत AVERAGE	1014	848	742	333	38	2975
अब तक का उच्चतम All Time Max.	1096	1001	845	367	40	3120
दिनांक Date	11.07.14	29.04.14	26.03.14	26.04.14	02.07.2014	25.06.14

ENERGY MET DURING THE MONTH OF JULY' 2014

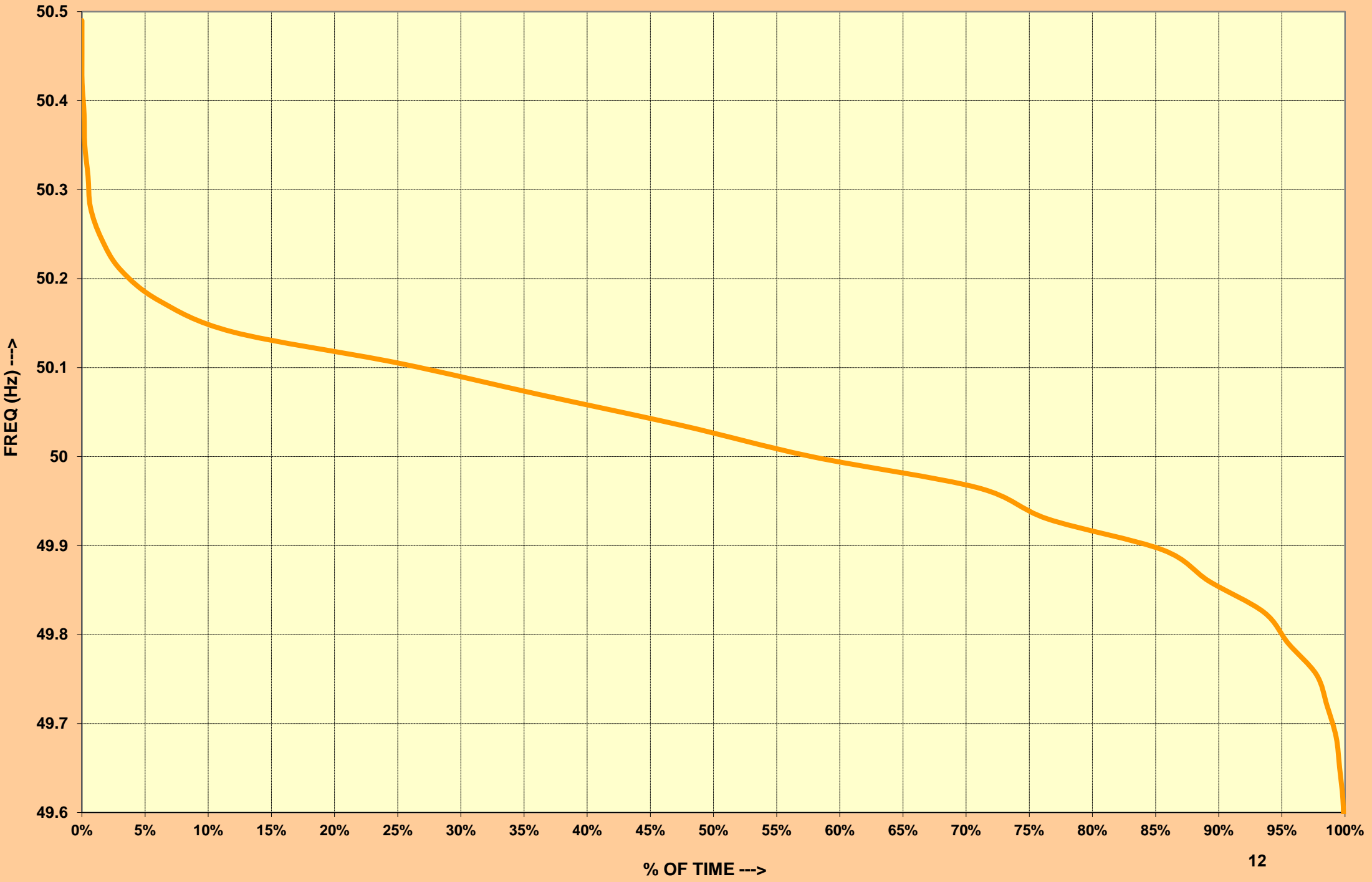


5.वर्ष 2014-15 के लिए आवृत्ति रूपरेखा FREQUENCY PROFILE FOR YEAR 2014-15

राष्ट्रीय ग्रिड NATIONAL GRID										
फ्रिक्वेंसी रूपरेखा (Hz)	<49.7	49.0-49.9	<49.9	49.9-50.05	>50.05		उच्चतम फ्रिक्वेंसी	निम्नतम फ्रिक्वेंसी	औसत फ्रिक्वेंसी	
ऑल इंडिया ग्रिड ALL INDIA GRID										
% समय	Jul-14	0.00	34.45	34.45	50.36	14.91		50.36	49.4	49.94
ऑल इंडिया ग्रिड NEW GRID*										
% समय	Jun-14	4.99	37.27	37.27	45.32	17.41		50.65	49.32	49.93
% समय	May-14	0.93	22.39	22.39	53.09	24.52		50.56	49.41	49.98
द. क्ष. ग्रिड SR GRID*										
% समय	May-14	1.46	26.88	26.88	51.54	21.58		50.56	49.41	49.97
% समय	Jun-14	6.25	40.68	40.68	43.93	15.40		50.65	49.32	49.92

* On Account of separation of SR GRID from NEW GRID for a brief time during the month of May & June 2014

ALL INDIA FREQUENCY DURATION CURVE FOR JULY' 2014



5.1 जून 2014 के लिए आवृत्ति रूपरेखा FREQUENCY PROFILE FOR JULY 2014

राष्ट्रीय ग्रिड NATIONAL GRID

फ़िक्वेंसी रूपरेखा (Hz)		<49.0	49.0-49.9	<49.9	49.9-50.05	>50.05	उच्चतम फ़िक्वेंसी	निम्नतम फ़िक्वेंसी	औसत फ़िक्वेंसी
% समय	01-Jul-14	0.00	20.42	20.42	50.86	28.73	50.27	49.74	49.99
	02-Jul-14	0.00	6.85	6.85	63.30	29.85	50.26	49.78	50.01
	03-Jul-14	0.00	24.97	24.97	52.25	22.78	50.29	49.45	49.97
	04-Jul-14	0.00	55.09	55.09	37.89	7.02	50.22	49.50	49.87
	05-Jul-14	0.00	73.37	73.37	22.21	4.42	50.16	49.53	49.84
	06-Jul-14	0.00	40.91	40.91	45.87	13.22	50.25	49.49	49.93
	07-Jul-14	0.00	61.33	61.33	33.62	5.05	50.12	49.51	49.86
	08-Jul-14	0.00	63.19	63.19	32.57	4.24	50.36	49.94	49.85
	09-Jul-14	0.00	51.24	51.24	42.70	6.10	50.17	49.58	49.89
	10-Jul-14	0.00	73.56	73.56	21.48	4.95	50.17	49.40	49.82
	11-Jul-14	0.00	41.86	41.86	50.46	7.66	50.20	49.54	49.91
	12-Jul-14	0.00	51.63	51.63	44.05	4.31	50.19	49.47	49.88
	13-Jul-14	0.00	34.43	34.43	50.16	15.41	50.27	49.51	49.93
	14-Jul-14	0.00	28.96	28.96	58.89	12.12	5.19	49.64	49.95
	15-Jul-14	0.00	25.61	25.61	53.65	20.73	50.28	49.66	49.96
	16-Jul-14	0.00	27.85	27.85	55.00	17.15	50.29	49.65	49.96
	17-Jul-14	0.00	24.93	24.93	58.68	16.39	50.23	49.71	49.96
	18-Jul-14	0.00	10.54	10.54	59.78	29.68	50.25	49.65	50.00
	19-Jul-14	0.00	11.72	11.72	65.25	23.02	50.22	49.71	49.99
	20-Jul-14	0.00	10.28	10.28	70.31	19.41	50.19	49.75	49.99
	21-Jul-14	0.00	10.28	10.28	70.31	19.41	50.28	49.55	49.95
	22-Jul-14	0.00	27.49	27.49	58.53	13.98	50.16	49.48	49.96
	23-Jul-14	0.00	48.61	48.61	41.53	9.86	50.36	49.65	49.96
	24-Jul-14	0.00	33.16	33.16	52.38	14.46	50.26	49.54	49.96
	25-Jul-14	0.00	26.50	26.50	57.60	15.90	50.25	49.40	50.00
	26-Jul-14	0.00	52.30	52.30	40.98	6.71	50.23	49.46	49.99
	27-Jul-14	0.00	52.35	52.35	38.88	8.77	50.31	49.77	49.99
	28-Jul-14	0.00	12.72	12.72	63.31	23.97	50.26	49.65	49.95
	29-Jul-14	0.00	20.82	20.82	62.40	16.80	50.34	49.67	49.96
	30-Jul-14	0.00	17.40	17.40	56.86	25.74	50.19	49.65	49.96
	31-Jul-14	0.00	27.63	27.63	58.02	14.35	50.23	49.62	49.96

6.राष्ट्रीय स्तर पर जल विद्युत उत्पादन
HYDRO GENERATION AT NATIONAL LEVEL

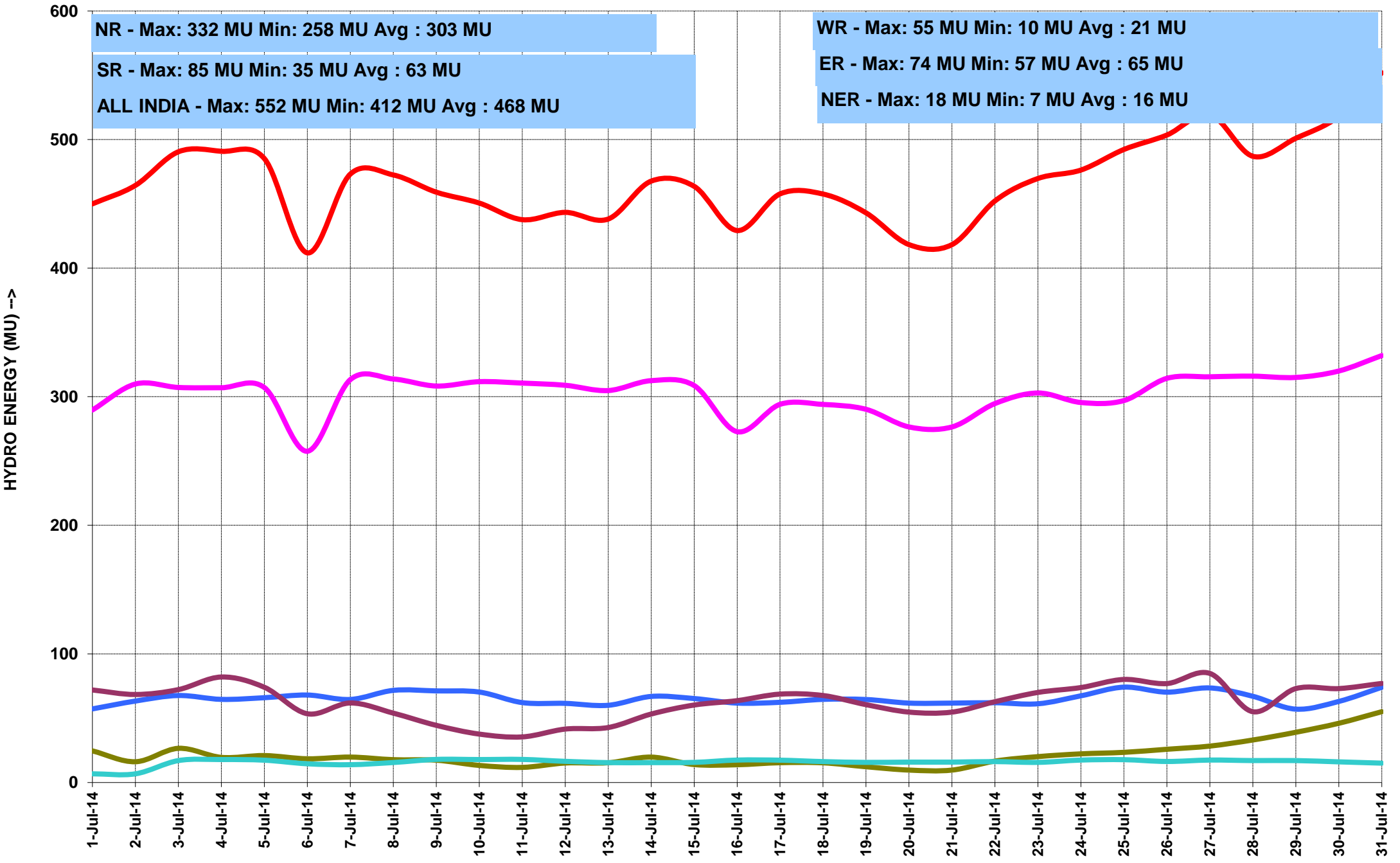
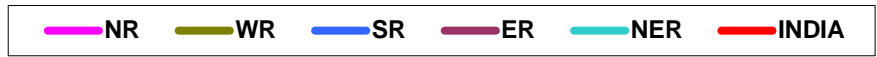
माह:- जून 2014

MONTH:- July 2014

सभी आंकड़े मिलियन यूनिट में All figures in MU

दिनांक Date	उत्तरी क्षे. NR	पश्चिमी क्षे. WR	दक्षिणी क्षे. SR	पूर्वी क्षे. ER	पूर्वोत्तर क्षे. NER	कुल TOTAL
01-Jul-14	290	25	72	57	7	450
02-Jul-14	310	16	68	63	7	464
03-Jul-14	307	27	72	68	17	491
04-Jul-14	307	19	82	65	18	491
05-Jul-14	307	21	74	66	17	485
06-Jul-14	258	18	53	68	15	412
07-Jul-14	313	20	62	65	14	473
08-Jul-14	314	18	54	72	16	473
09-Jul-14	308	17	44	71	18	459
10-Jul-14	312	13	38	70	18	451
11-Jul-14	311	12	35	62	18	438
12-Jul-14	309	15	42	62	16	443
13-Jul-14	305	15	43	60	15	438
14-Jul-14	313	20	53	67	15	468
15-Jul-14	309	14	60	65	16	464
16-Jul-14	273	14	64	62	17	429
17-Jul-14	294	15	69	62	17	458
18-Jul-14	294	15	68	65	16	458
19-Jul-14	290	12	61	65	16	443
20-Jul-14	277	10	55	62	16	418
21-Jul-14	277	10	55	62	16	418
22-Jul-14	295	17	63	62	16	452
23-Jul-14	303	20	70	61	16	470
24-Jul-14	296	22	74	67	17	476
25-Jul-14	297	23	80	74	18	492
26-Jul-14	314	26	77	70	16	504
27-Jul-14	316	28	85	74	17	519
28-Jul-14	316	33	55	67	17	487
29-Jul-14	315	39	73	57	17	501
30-Jul-14	320	46	73	63	16	518
31-Jul-14	332	55	77	74	15	552
कुल TOTAL	9378	655	1949	2026	489	14495
उच्चतम MAXIMUM	332	55	85	74	18	552
निम्नतम MINIMUM	258	10	35	57	7	412
औसत AVERAGE	303	21	63	65	16	468
अब तक का उच्चतम All Time Max.	332	142	202	91	27	712
दिनांक Date	31.07.14	29.09.11	08.08.13	07.09.13	14.09.10	27.08.13

HYDRO ENERGY DURING THE MONTH OF JULY' 2014



DATE -->

7. राष्ट्रीय स्तर पर पवन ऊर्जा उत्पादन
WIND GENERATION AT NATIONAL LEVEL
माह:- जुलाई 2014 **MONTH:- July 2014**

सभी आंकड़े मिलियन यूनिट में All figures in MU

दिनांक Date	ऊत्तरी क्षे. NR	पश्चिमी क्षे. WR	दक्षिणी क्षे. SR	पूर्वी क्षे. ER	पूर्वोत्तर क्षे. NER	कुल TOTAL
01-Jul-14	2	82	90	174
02-Jul-14	2	79	102	183
03-Jul-14	23	74	106	203
04-Jul-14	24	69	96	189
05-Jul-14	21	51	97	169
06-Jul-14	19	44	79	142
07-Jul-14	24	52	70	146
08-Jul-14	2	58	85	145
09-Jul-14	26	45	95	166
10-Jul-14	2	44	91	137
11-Jul-14	15	62	104	181
12-Jul-14	18	49	109	176
13-Jul-14	13	38	83	134
14-Jul-14	9	37	101	147
15-Jul-14	12	44	111	167
16-Jul-14	2	41	116	159
17-Jul-14	7	44	121	172
18-Jul-14	9	73	123	205
19-Jul-14	19	91	124	234
20-Jul-14	21	95	116	232
21-Jul-14	22	90	122	234
22-Jul-14	22	94	124	240
23-Jul-14	15	86	121	222
24-Jul-14	8	85	116	209
25-Jul-14	10	51	111	172
26-Jul-14	8	48	115	171
27-Jul-14	12	61	113	186
28-Jul-14	2	71	119	192
29-Jul-14	9	75	126	210
30-Jul-14	5	44	120	169
31-Jul-14	4	39	116	159
कुल TOTAL	387	1916	3322	5625
उच्चतम MAXIMUM	26	95	126	240
निम्नतम MINIMUM	2	37	70	134
औसत AVERAGE	12	62	107	181
अब तक का उच्चतम All Time Max.	34.9	102.8	125.1	223.8
दिनांक Date	12.06.12	22.06.14	25.06.14	03.08.12

8. ACTUAL POWER SUPPLY POSITION - July 2014

REGION	STATE	Requirement/Availability in MU/DAY			Requirement/Availability in MU				Peak Demand/Peak Met in MW			
		Requirement	Energy met	Surplus(+)/Deficit(-)	Requirement	Energy met	Surplus(+)/Deficit(-)	% Shortage	Requirement	Peak Demand Met	Surplus(+)/Deficit(-)	% Shortage
NR	Chandigarh	6	6	0	182	182	0	0	367	367	0	0
	Delhi	107	107	0	3322	3320	-1	0	5925	5925	0	0
	Haryana	172	172	0	5340	5333	-8	0	8752	8752	0	0
	H.P.	25	24	0	765	754	-11	-1	1248	1248	0	0
	J&K	31	30	-2	973	925	-48	-5	2413	1931	-482	-20
	Punjab	214	208	-6	6642	6447	-195	-3	10377	10377	0	0
	Rajasthan	182	179	-4	5644	5535	-109	-2	9403	9403	0	0
	U.P.	305	257	-49	9470	7966	-1504	-16	14407	12027	-2380	-17
	Uttarakhand	35	34	-1	1084	1048	-36	-3	1780	1780	0	0
	NFF/Railway	2	2	0	69	69	0	0	100	100	0	0
TOTAL	1080	1019	-62	33491	31579	-1912	-6	50392	47367	-3025	-6	
WR	Gujarat	263	262	-1	7879	7858	-21	0	13969	13833	-136	-1
	Madhya Pradesh	143	141	-1	4283	4244	-39	-1	7121	7090	-31	0
	Chhattisgarh	69	68	-1	2067	2035	-32	-2	3414	3118	-296	-9
	Maharashtra	377	375	-2	11318	11261	-57	-1	19385	19283	-102	-1
	Goa	8	8	0	243	240	-3	-1	459	459	0	0
	D&D	6	6	0	187	187	0	0	287	287	0	0
	DNH	16	15	0	467	464	-3	-1	721	721	0	0
	ESIL	7	7	0	199	198	-1	-1	532	532	0	0
TOTAL	888	883	-5	26643	26487	-156	-1	43419	43034	-385	-1	
SR	AP-TRANSCO	140	134	-6	4201	4011	-190	-5	6230	6072	-158	-3
	TG - TRANSCO	142	126	-16	4255	3780	-475	-11	6556	5949	-607	-9
	KPTCL	165	159	-6	4954	4782	-172	-3	8228	8137	-91	-1
	KSEB	59	58	-1	1765	1733	-32	-2	3373	3218	-154	-5
	TNEB	285	284	-1	8557	8532	-25	0	13298	13293	-4	0
	PONDICHERY	7	7	0	211	206	-5	-3	327	325	-2	-1
TOTAL	656	642	-14	19689	19264	-424	-2	36409	35380	-1029	-3	
ER	Bihar	44	46	2	1312	1374	62	5	2650	2433	-217	-8
	JSEB	22	20	-1	650	612	-38	-6	1050	1033	-17	-2
	DVC	53	57	5	1575	1711	136	9	2625	2630	5	0
	Odisha	74	75	1	2232	2249	17	1	3750	3814	64	2
	West Bengal	137	146	8	4118	4366	248	6	7500	7602	102	1
TOTAL	330	344	14	9887	10312	425	4	17155	17078	-77	0	
NER	Arunachal Pradesh	2	2	0	52	51	-2	-3	118	116	-2	-1
	Assam	27	25	-2	820	756	-64	-8	1329	1187	-142	-11
	Manipur	2	2	0	52	49	-2	-5	131	125	-6	-4
	MeSEB	5	4	-1	155	131	-23	-15	299	297	-2	-1
	Mizoram	1	1	0	38	36	-2	-5	83	82	-1	-1
	Nagaland	2	2	0	52	50	-2	-4	120	117	-3	-2
	Tripura	3	3	0	101	93	-7	-7	239	238	-1	0
TOTAL	42	39	-3	1269	1167	-102	-8	2318	2163	-156	-7	
ALL INDIA	2997	3043	-70	90978	91303	-2107	0	149694	135746	-13948	-9	

9. ENERGY COMPARISON OF JULY 2014 Vs JULY 2013

REGION	STATE	Energy Requirement (MU)					Energy Met (MU)				
		Jul-13	Jul-14	Difference	% Change	Average MU/day for Jul-14	Jul-13	Jul-14	Difference	% Change	Average for MU/day Jul -14
NR	Chandigarh	178	182	5	3	6	178	182	5	3	6
	Delhi	3073	3322	248	8	111	3072	3320	248	8	111
	Haryana	5085	5340	256	5	178	5082	5333	250	5	178
	H.P.	751	765	14	2	26	748	754	7	1	25
	J&K	1240	973	-267	-22	32	916	925	9	1	31
	Punjab	6290	6642	352	6	221	5876	6447	570	10	215
	Rajasthan	4437	5644	1207	27	188	4421	5535	1114	25	184
	U.P.	8450	9470	1020	12	316	7380	7966	586	8	266
	Uttarakhand	1062	1084	22	2	36	1004	1048	44	4	35
	NFF/Railway	78	69	-10	-12	2	78	69	-10	-12	2
TOTAL	30643	33491	2847	9	1116	28755	31579	2824	10	1053	
WR	Gujarat	6230	7879	1649	26	263	6224	7858	1634	26	262
	Madhya Pradesh	3392	4283	891	26	143	3391	4244	853	25	141
	Chhattisgarh	1948	2067	119	6	69	1943	2035	92	5	68
	Maharashtra	9450	11318	1868	20	377	9392	11261	1869	20	375
	Goa	223	243	20	9	8	222	240	18	8	8
	D&D	186	187	1	1	6	185	187	2	1	6
	DNH	442	467	25	6	16	430	464	34	8	15
	ESIL	297	199	-98	-33	7	296	198	-98	-33	7
TOTAL	22166	26643	4477	20	888	22085	26487	4402	20	883	
SR	AP-TRANSCO	7599	4201	857	11	136	6858	3859	516	8	129
	TG - TRANSCO		4255			137		3515			117
	KPTCL	4763	4954	191	4	165	4306	4785	479	11	160
	KSEB	1609	1765	156	10	59	1594	1725	131	8	58
	TNEB	7952	8557	605	8	285	7736	8412	676	9	280
	PONDY	194	211	17	9	7	193	206	13	7	7
	TOTAL	22118	19689	-2429	-11	656	20688	22851	2163	10	762
ER	Bihar	1230	1291	61	5	43	1295	1424	129	10	47
	JSEB	710	700	-10	-1	23	610	634	24	4	21
	DVC	1635	1640	5	0	55	1806	1755	-51	-3	59
	Odisha	2260	2329	69	3	78	2059	2201	142	7	73
	West Bengal	4446	4433	-13	0	148	4386	4565	179	4	152
	TOTAL	10281	10393	112	1	346	10156	10579	423	4	353
NER	Arunachal Pradesh	38	52	14	36	2	36	51	15	40	2
	Assam	737	820	83	11	27	694	756	62	9	25
	Manipur	46	52	6	12	2	44	49	5	11	2
	MeSEB	145	155	10	7	5	138	131	-6	-5	4
	Mizoram	36	38	2	4	1	35	36	1	3	1
	Nagaland	46	52	6	14	2	44	50	5	12	2
	Tripura	107	101	-6	-6	3	100	93	-7	-7	3
TOTAL	1155	1269	114	10	42	1092	1167	75	7	39	
ALL INDIA	86363	91484	5121	6	3049	82776	92662	9887	12	3089	

10. DEMAND COMPARISON OF JULY 2014 Vs JULY 2013

REGION	STATE	Peak Requirement (MW)				Peak Met (MW)			
		Jul-13	Jul-14	Difference	% Change	Jul-13	Jul-14	Difference	% Change
NR	Chandigarh	328	367	39	11.9	328	367	39	11.9
	Delhi	5398	5925	527	9.8	5384	5925	541	10.0
	Haryana	8114	8752	638	7.9	8114	8752	638	7.9
	H.P.	1196	1248	52	4.3	1149	1248	99	8.6
	J&K	2104	2413	309	14.7	2004	1931	-73	-3.6
	Punjab	9179	10377	1198	13.1	8779	10377	1598	18.2
	Rajasthan	7306	9403	2097	28.7	7293	9403	2110	28.9
	U.P.	14101	14407	306	2.2	13089	12027	-1062	-8.1
	Uttarakhand	1689	1780	91	5.4	1689	1780	91	5.4
	NFF/Railway	105	100	-5	-4.8	105	100	-5	-4.8
TOTAL	45752	50392	4640	10.1	42523	47367	4844	11.4	
WR	Gujarat	10641	13969	3328	31	10675	13833	3158	29.6
	Madhya Pradesh	5811	7121	1310	23	5821	7090	1269	21.8
	Chhattisgarh	3089	3414	325	11	3050	3118	68	2.2
	Maharashtra	15040	19385	4345	29	14919	19283	4364	29.3
	Goa	425	459	34	8	412	459	47	11.4
	D&D	269	287	18	6.7	239	287	48	20.1
	DNH	639	721	82	12.8	610	721	111	18.2
	ESIL	513	532	19	3.7	512	532	20	3.9
TOTAL	34541	43419	8878	25.7	34317	43034	8717	25.4	
SR	AP-TRANSCO	11090	6230	1696	15.3	10932	6072	1089	10.0
	TG - TRANSCO		6556				5949		
	KPTCL	8087	8228	141	1.7	7314	8137	823	11.3
	KSEB	3162	3373	211	6.7	3024	3218	194	6.4
	TNEB	12094	13298	1204	10.0	11794	13293	1499	12.7
	PONDY	324	327	3	0.9	324	325	1	0.3
	TOTAL	34505	36409	1904	5.5	31620	35380	3760	11.9
ER	Bihar	2650	2650	0	0.0	2126	2570	444	20.9
	JSEB	1140	1090	-50	-4.4	999	1024	25	2.5
	DVC	2635	2645	10	0.4	2671	2693	22	0.8
	Odisha	3650	3700	50	1.4	3635	3736	101	2.8
	West Bengal	7399	7460	61	0.8	7373	7806	433	5.9
TOTAL	17052	17126	74	0.4	16115	17175	1060	6.6	
NER	Arunachal Pradesh	108	118	10	9.1	104	116	12	11.5
	Assam	1262	1329	67	5.3	1188	1187	-1	-0.1
	Manipur	118	131	13	11.0	117	125	8	6.7
	MeSEB	269	299	30	11.2	269	297	28	10.4
	Mizoram	60	83	24	39.5	59	82	23	39.7
	Nagaland	102	120	17	17.1	101	117	16	15.8
	Tripura	220	239	19	8.6	220	238	18	8.3
TOTAL	2138	2318	180	8.4	2058	2163	104	5.1	
ALL INDIA		133988	150882	16894	12.6	118235	135746	17511	15

11. SCHEDULE AND DRAWAL OF CONSTITUENTS - July 2014

REGION	STATE	SCHEDULE (MU)	ACTUAL DRAWAL (MU)	Over drawal(+)/ Under Drawal(-) (MU)	% OD/UD	SCHEDULE (MU/DAY)	ACTUAL DRAWAL (MU/DAY)	Over drawal(+)/ Under Drawal(-) (MU/DAY)
NR	Chandigarh	169	198	28.9	17.1	5.6	6.6	1.0
	Delhi	2455	2383	-72.3	-2.9	81.8	79.4	-2.4
	Haryana	3503	3452	-50.6	-1.4	116.8	115.1	-1.7
	H.P.	-4	11	15.3	-345.6	-0.1	0.4	0.5
	J&K	525	533	7.7	1.5	17.5	17.8	0.3
	Punjab	3687	3739	52.3	1.4	122.9	124.6	1.7
	Rajasthan	1582	1582	0.7	0.0	52.7	52.7	0.0
	U.P.	3748	3880	131.7	3.5	124.9	129.3	4.4
	Uttarakhand	432	449	17.0	3.9	14.4	15.0	0.6
NFF/Railway	48	68	19.9	41.3	1.6	2.3	0.7	
WR	Gujarat	1173	1143	-30.0	-2.6	39.1	38.1	-1.0
	Madhya Pradesh	2362	2364	2.0	0.1	78.7	78.8	0.1
	Maharashtra	2988	2934	-54.0	-1.8	99.6	97.8	-1.8
	Chhattisgarh	567	578	11.0	1.9	18.9	19.3	0.4
	Goa	219	229	10.0	4.6	7.3	7.6	0.3
	D&D	172	187	15.0	8.7	5.7	6.2	0.5
	D&NH	468	463	-5.0	-1.1	15.6	15.4	-0.2
	ESIL	224	198	-26.0	-11.6	7.5	6.6	-0.9
SR	AP TRANSCO	1143	1041	-101.6	-8.9	38.1	34.7	-3.4
	TG TRANSCO	2122	2218	96.7	4.6	70.7	73.9	3.2
	KPTCL	585	590	5.2	0.9	19.5	19.7	0.2
	KSEB	847	910	63.3	7.5	28.2	30.3	2.1
	TNEB	2447	2441	-6.2	-0.3	81.6	81.4	-0.2
	PONDICHERRY	205	206	0.5	0.3	6.8	6.9	0.0
	Goa(SR)	46	45	-1.0	-2.2	1.5	1.5	0.0
ER	Bihar	1389	1394	4.8	0.3	46.3	46.5	0.2
	JSEB	402	391	-11.2	-2.8	13.4	13.0	-0.4
	DVC	-459	-445	14.2	-3.1	-15.3	-14.8	0.5
	GRIDCO	812	843	31.7	3.9	27.1	28.1	1.1
	WBSEB	1197	1208	11.9	1.0	39.9	40.3	0.4
	Sikkim	35	31	-4.0	-11.3	1.2	1.0	-0.1
NER	Arunachal Pradesh	54	60	5.7	10.5	1.8	2.0	0.2
	Assam	469	506	37.3	8.0	15.6	16.9	1.2
	Manipur	69	65	-3.6	-5.3	2.3	2.2	-0.1
	MeSEB	29	24	-4.9	-16.8	1.0	0.8	-0.2
	Mizoram	38	39	1.2	3.1	1.3	1.3	0.0
	Nagaland	52	52	-0.2	-0.5	1.7	1.7	0.0
	Tripura	46	53	7.8	17.1	1.5	1.8	0.3

12. INTER REGIONAL EXCHANGES 2014-15

	April'14	May'14	June'14	July'14	Fin. Year 2014-15 Till July 2014
Name of Line					
Import of NR from WR (WR-NR)					
WR - NR 765 kV Gwalior - Agra D/C	1131.41	1094.02	1169.37	1136.35	3394.80
WR - NR HVDC Vindhyachal	226.93	146.02	220.87	76.68	593.82
WR - NR 400 kV Zerda Kankroli	0.00	0.00	0.00	1.12	0.00
WR - NR 400 kV Zerda Bhinmal	0.00	0.00	0.11	0.11	0.11
WR - NR 220 kV Badod - Kota/ Modak	0.00	0.00	5.46	3.26	5.46
WR - NR 220 kV Auraiya - Malanpur/Mehgaon	0.00	0.00	2.26	0.00	2.26
WR - NR HVDC Mundra - Mohindergarh	1435.93	1407.11	1420.90	1508.24	5772.18
Total WR - NR	2794.27	2647.15	2818.96	2725.76	8260.38
Import of NR from ER (ER-NR)					
ER - NR 765 kV Sasaram - Fatehpur	15.63	29.42	61.54	63.42	106.58
ER - WR 765 kV Gaya - Fatehpur	0.00	5.45	7.52	10.10	12.97
ER - WR 400 kV Pusauli - Balia	1.80	0.00	2.18	1.89	3.98
ER-NR 400 kV Patna - Balia 2xD/C	199.41	188.18	196.33	216.02	583.91
ER - NR 400 kV Muzaffarpur - Gorakhpur D/C	60.87	153.36	338.00	356.61	552.22
ER - NR 400 kV Biharshariff - Balia D/C	73.20	134.72	234.73	161.92	442.65
ER - NR HVDC Sasaram (Byepass)	214.12	275.04	232.52	300.59	721.68
ER - NR 220 kV Pusauli - Sahupuri	112.59	109.26	117.30	106.27	339.14
ER - NR 132 kV Sahupuri - Karamnasa	0.00	0.00	0.00	0.00	0.00
ER - NR 132 kV Rihand - Son Nagar	0.00	0.00	0.00	0.00	0.00
Total NR - ER	677.62	895.41	1190.11	1216.83	2763.13
Export of NR to WR (NR-WR)					
NR - WR 765 kV Gwalior - Agra D/C	0.00	0.00	0.00	0.00	0.00
NR - WR HVDC Vindhyachal	7.75	36.56	10.16	68.79	54.47
NR - WR 400 kV Zerda Kankroli	180.30	135.80	123.34	131.77	439.44
NR - WR 400 kV Zerda Bhinmal	133.65	98.67	104.05	114.09	336.37
NR - WR 220 kV Badod - Kota/ Modak	88.03	68.11	90.43	54.24	246.58
NR - WR 220 kV Auraiya - Malanpur/Mehgaon	26.51	28.54	26.76	37.59	81.81
NR - WR HVDC Mundra - Mohindergarh	0.00	0.00	0.00	0.00	0.00
Total NR - WR	436.24	367.68	354.74	406.49	1158.66
Export of NR to ER (NR-ER)					
NR - ER 765 kV Sasaram - Fatehpur	39.73	10.26	1.31	1.06	51.30
NR - ER 765 kV Gaya - Fatehpur	50.11	22.91	1.64	3.28	74.66
NR - ER 400 kV Pusauli - Balia	66.02	53.18	20.67	43.56	139.87
NR - ER 400 kV Patna - Balia 2xD/C	0.00	0.00	0.65	0.00	0.65
NR - ER 400 kV Muzaffarpur - Gorakhpur D/C	5.12	1.26	0.00	0.00	6.38
NR - ER 400 kV Biharshariff - Balia D/C	2.38	0.00	0.00	0.00	2.38
NR - ER HVDC Sasaram (Byepass)	25.06	0.70	1.72	0.00	27.49
NR - ER 220 kV Pusauli - Sahupuri	0.00	0.03	0.00	3.28	0.03
NR - ER 132 kV Sahupuri - Karamnasa	0.00	0.94	0.00	-0.50	0.94
NR - ER 132 kV Rihand - Son Nagar	12.54	7.36	3.28	6.11	23.18
Total NR - ER	200.97	96.65	29.27	56.78	326.88

12. INTER REGIONAL EXCHANGES 2014-15

	April'14	May'14	June'14	July'14	Fin. Year 2014-15 Till July 2014
Name of Line					
Export of WR to ER (WR-ER)					
WR - ER 765 kV Ranchi - Dharamjaygarh	4.29	72.09	2.90	-84.11	79.28
WR - ER 400 kV Sipat - Ranchi D/C	5.57	97.73	44.48	-64.65	147.77
WR - ER 400 kV Raigarh - Sterlite D/C	0.00	0.00	0.37	-79.86	0.37
WR - ER 400 kV Raigarh - Jharsuguda D/C	2.20	78.59	45.11	-134.56	125.90
WR - ER 220 kV Korba - Budhipadar D/C	0.19	10.23	8.18	-4.97	18.60
WR - ER 220 kV Raigarh - Budhipadar	0.00	0.49	0.08	-0.80	0.57
Total WR - ER	7.95	259.13	141.09		408.18
Import of WR from ER (ER - WR)					
ER - WR 765 kV Ranchi - Dharamjaygarh	0.00	0.73	5.28	6.08	6.02
ER - WR 400 kV Sipat - Ranchi D/C	2.42	0.00	2.53	3.75	4.95
ER - WR 400 kV Raigarh - Sterlite D/C	115.86	115.02	172.47	118.86	403.35
ER - WR 400 kV Raigarh - Jharsuguda D/C	0.00	0.00	13.84	2.72	13.84
ER - WR 220 kV Korba - Budhipadar D/C	4.66	9.39	12.19	33.53	26.24
ER - WR 220 kV Raigarh - Budhipadar	70.98	63.40	64.54	34.75	198.92
Total ER - WR	193.92	188.55	270.86	199.69	653.33
Export of ER to NER					
ER - NER 400 kV Binaguri - Bongaigaon D/C	231.89	201.50	128.44	48.77	610.60
ER - NER 220 kV Birpara - Salakati D/C	41.64	59.03	63.64	25.26	189.57
Total ER - NER	273.52	260.53	192.08	74.03	726.13
Import of ER from NER (NER - ER)					
NER - ER 400 kV Binaguri - Bongaigaon D/C	0.00	0.00	6.92	-34.70	-27.78
NER - ER 220 kV Birpara - Salakati D/C	0.00	0.00	0.00	0.46	0.46
Total NER - ER	0.00	0.00	6.92	-34.24	6.92
Export of ER to SR (ER - SR)	0.00				0.00
ER - SR HVDC Gazuwaka	534.56	526.50	394.52	488.09	1455.59
ER - SR HVDC Talchar - Kolar	1419.85	1299.16	1345.00	1431.12	4064.01
ER - SR 220 kV Balimela - Upper Sileru*	0.38	0.00	0.21	0.12	0.71
Total ER - SR	1954.41	1825.70	1739.53	1919.33	5519.64
Import of ER from SR (SR - ER)					
SR - ER HVDC Gazuwaka	0.00	0.00	0.00	0.00	0.00
SR - ER HVDC Talchar - Kolar	0.00	0.00	0.00	0.00	0.00
Total SR - ER	0.00	0.00	0.00	0.00	0.00
Export of WR to SR (WR-SR)					
WR - SR HVDC Bhadravati	691.96	692.54	675.04	727.00	2786.54
WR - SR 765 kV Sholapur - Raichur	78.84	68.83	79.31	118.00	344.98
Total WR - SR	770.80	761.36	754.35	845.00	2286.51
Import of WR from SR (SR - WR)					
SR - WR HVDC Bhadravati	0.00	0.00	0.00	0.00	0.00
SR - WR 765 kV Raichur - Sholapur	35.99	47.17	50.50	51.39	185.04
Total SR - WR	35.99	47.17	50.50	51.39	133.65
TOTAL ALL INDIA	7346	7349	7548	7461	22243

Date	12.1 Import of NR from WR & ER during July 2014																			
	Import of NR from WR (WR-NR)									Import of NR from ER (ER-NR)										
	WR - NR 765 kV Gwalior - Agra D/C	WR - NR HVDC V'chal	WR - NR 400 kV Zerda- Kankroli	WR - NR 400 kV Zerda- Bhinmal	WR - NR 220 kV Badod - Kota / Modak	WR - NR 220 kV Auraiya - Malanpur / Mehgaon	WR-NR 400 KV Rihand Vindhyachal	WR - NR HVDC Mundra - M'garh	Total WR - NR	ER - NR 765 kV Sasaram - Fatehpur	ER - WR 765 kV Gaya - Fatehpur	ER - WR 400 kV Pusauli - Balua	ER-NR 400 kV Patna - Balua 2xD/C	ER - NR 400 kV Muzaffarpur - G'pur D/C	ER - NR 400 kV B'shariff - Balua D/C	ER - NR HVDC Sasaram (Byepass)	ER - NR 220 kV Pusauli - Sahupuri	ER - NR 132 kV Sahupuri - K'nasa	ER - NR 132 kV Rihand - Son Nagar	Total NR -WR
1-Jul-14	31.12	2.77	0.00	0.00	0.00	0.00	0.00	47.24	81.12	0.00	0.00	0.00	5.08	12.41	5.88	9.51	3.60	0.00	0.00	36.49
2-Jul-14	26.31	1.66	0.00	0.00	0.00	0.00	0.00	44.33	72.30	1.73	0.00	0.00	5.00	12.68	5.85	9.71	3.77	0.00	0.00	38.74
3-Jul-14	27.14	1.82	0.00	0.00	0.00	0.00	0.00	49.14	78.10	1.69	0.00	0.00	4.68	12.75	5.63	9.64	3.68	0.00	0.00	38.07
4-Jul-14	27.44	0.27	0.00	0.00	0.00	0.00	7.68	45.94	81.32	1.68	0.00	0.00	5.74	14.72	7.23	9.75	0.00	0.00	0.00	39.12
5-Jul-14	29.23	2.45	0.00	0.00	0.00	0.00	12.06	43.13	86.86	3.24	0.00	0.00	-2.72	8.99	-4.19	9.69	3.05	0.00	0.00	18.06
6-Jul-14	29.23	2.45	0.00	0.00	0.00	0.00	12.06	43.13	86.86	3.08	0.00	0.00	2.72	8.99	4.19	9.69	3.05	0.00	0.00	31.73
7-Jul-14	38.17	4.65	0.00	0.00	0.00	0.00	12.06	48.39	103.27	0.00	0.00	0.00	3.70	10.08	4.43	9.73	3.07	0.00	0.00	31.01
8-Jul-14	37.77	0.08	0.00	0.11	0.00	0.00	10.43	47.68	96.06	3.34	0.00	0.00	3.35	10.23	5.27	9.67	3.52	0.00	0.00	35.37
9-Jul-14	43.87	1.04	0.00	0.00	0.00	0.00	12.35	51.62	108.88	3.19	0.00	0.00	7.27	14.04	7.71	9.72	3.76	0.00	0.00	45.70
10-Jul-14	46.87	2.96	0.00	0.00	1.31	0.00	9.68	55.62	116.44	3.23	0.00	0.00	9.49	14.81	7.39	9.65	3.71	0.00	0.00	48.28
11-Jul-14	46.87	2.96	0.00	0.00	1.31	0.00	9.68	55.62	116.44	0.89	0.00	0.00	9.49	14.81	7.39	9.65	3.71	0.00	0.00	45.93
12-Jul-14	47.72	4.98	1.12	0.00	0.64	0.00	0.00	54.39	108.85	0.00	0.00	0.00	11.74	13.28	7.19	9.74	3.75	0.00	0.00	45.69
13-Jul-14	42.54	1.89	0.00	0.00	0.00	0.00	0.00	52.72	97.15	2.53	0.00	0.00	13.15	12.44	8.30	9.72	3.60	0.00	0.00	49.73
14-Jul-14	47.74	9.21	0.00	0.00	0.00	0.00	11.01	50.39	118.36	3.06	0.32	0.00	12.30	13.45	6.46	9.72	3.94	0.00	0.00	49.25
15-Jul-14	47.97	1.26	0.00	0.00	0.00	0.00	11.52	56.62	117.36	3.13	2.77	0.00	12.30	13.92	6.46	9.72	3.94	0.00	0.00	52.24
16-Jul-14	44.42	2.27	0.00	0.00	0.00	0.00	11.52	48.11	106.32	2.94	0.00	0.00	12.30	13.92	6.46	9.72	3.94	0.00	0.00	49.28
17-Jul-14	36.82	2.27	0.00	0.00	0.00	0.00	11.52	41.92	92.53	1.22	0.00	0.00	3.43	9.18	4.05	9.72	3.94	0.00	0.00	31.55
18-Jul-14	33.83	0.24	0.00	0.00	0.00	0.00	7.66	42.63	84.36	1.80	0.00	0.00	3.44	8.61	3.05	9.68	3.21	0.00	0.00	29.79
19-Jul-14	36.38	2.02	0.00	0.00	0.00	0.00	0.00	45.15	83.55	2.10	0.00	1.89	3.03	8.58	2.73	9.77	3.46	0.00	0.00	31.54
20-Jul-14	38.14	1.30	0.00	0.00	0.00	0.00	8.18	46.40	94.03	4.32	0.00	0.00	5.17	9.76	3.32	9.60	3.31	0.00	0.00	35.48
21-Jul-14	37.67	3.70	0.00	0.00	0.00	0.00	0.00	44.51	85.88	3.24	1.12	0.00	3.61	11.17	4.32	9.76	3.39	0.00	0.00	36.61
22-Jul-14	37.67	1.67	0.00	0.00	0.00	0.00	9.17	51.18	99.70	4.32	1.12	0.00	9.85	12.75	5.13	9.71	2.97	0.00	0.00	45.85
23-Jul-14	36.21	4.10	0.00	0.00	0.00	0.00	9.42	49.23	98.96	0.27	0.61	0.00	9.04	10.96	5.06	9.71	3.21	0.00	0.00	38.85
24-Jul-14	32.29	6.34	0.00	0.00	0.00	0.00	11.02	52.86	102.52	3.52	0.66	0.00	12.00	10.82	4.77	9.59	3.32	0.00	0.00	44.67
25-Jul-14	31.89	6.86	0.00	0.00	0.00	0.00	12.01	48.37	99.13	2.87	0.57	0.00	10.73	11.05	5.19	9.64	3.68	0.00	0.00	43.72
26-Jul-14	34.85	1.33	0.00	0.00	0.00	0.00	11.96	51.70	99.84	4.15	0.27	0.00	8.49	10.86	4.47	9.78	3.45	0.00	0.00	41.47
27-Jul-14	32.73	0.80	0.00	0.00	0.00	0.00	11.32	50.80	95.64	0.00	1.11	0.00	11.48	11.26	4.40	9.69	3.61	0.00	0.00	41.56
28-Jul-14	35.64	0.51	0.00	0.00	0.00	0.00	7.78	48.39	92.32	0.00	0.00	0.00	4.49	7.81	4.49	9.84	3.77	0.00	0.00	30.41
29-Jul-14	30.64	0.70	0.00	0.00	0.00	0.00	7.80	48.39	87.53	0.00	0.00	0.00	4.55	8.65	5.51	9.70	3.77	0.00	0.00	32.19
30-Jul-14	32.24	0.18	0.00	0.00	0.00	0.00	8.45	44.90	85.77	0.00	0.56	0.00	4.81	10.93	5.85	9.67	3.64	0.00	0.00	35.45
31-Jul-14	34.96	1.93	0.00	0.00	0.00	0.00	9.15	47.75	93.79	1.89	0.98	0.00	6.31	12.71	7.94	9.70	3.49	0.00	0.00	43.02
Total	1136.35	76.68	1.12	0.11	3.26	0.00	245.48	1508.20	2971.21	63.42	10.10	1.89	216.02	356.61	161.92	300.59	106.27	0.00	0.00	1216.83

Date	12.2 Export of NR to WR & ER during July 2014																		
	Export of NR to WR (NR- WR)								Export of NR to ER (NR- ER)										
	WR - NR 765 kV Gwalior - Agra D/C	WR - NR HVDC V'chal	WR - NR 400 kV Zerda- Kankroli	WR - NR 400 kV Zerda- Bhinmal	WR - NR 220 kV Badod - Kota / Modak	WR - NR 220 kV Auraiya - Malanpur / Mehgaon	WR - NR HVDC Mundra - M'garh	Total WR - NR	ER - NR 765 kV Sasaram - Fatehpur	ER - WR 765 kV Gaya - Fatehpur	ER - WR 400 kV Pusauli - Balia	ER-NR 400 kV Patna - Balialia 2xD/C	ER - NR 400 kV Muzaffarpur - G'pur D/C	ER - NR 400 kV B'shariff - Balialia D/C	ER - NR HVDC Sasaram (Byepass)	ER - NR 220 kV Pusauli - Sahupuri	ER - NR 132 kV K'nasa	ER - NR 132 kV Rihand - Son Nagar	Total NR -WR
1-Jul-14	0.00	2.22	6.64	6.45	2.93	1.51	0.00	19.75	0.00	0.00	1.70	0.00	0.00	0.00	0.00	0.00	0.00	0.00	1.70
2-Jul-14	0.00	1.43	6.56	6.16	2.66	1.40	0.00	18.20	0.00	0.00	1.64	0.00	0.00	0.00	0.00	0.00	0.00	0.76	2.40
3-Jul-14	0.00	1.14	6.95	6.37	2.68	1.29	0.00	18.43	0.00	0.00	1.53	0.00	0.00	0.00	0.00	0.00	0.00	0.65	2.18
4-Jul-14	0.00	4.61	6.24	6.13	2.34	1.37	0.00	20.68	0.00	0.00	1.38	0.00	0.00	0.00	3.28	0.00	-0.51	4.15	
5-Jul-14	0.00	4.19	5.18	5.12	1.40	1.18	0.00	17.07	0.00	0.00	1.57	0.00	0.00	0.00	0.00	0.00	-0.65	0.92	
6-Jul-14	0.00	4.19	5.18	5.12	1.40	1.18	0.00	17.07	0.00	0.00	1.57	0.00	0.00	0.00	0.00	0.00	-0.65	0.92	
7-Jul-14	0.00	0.38	4.62	4.84	0.71	0.99	0.00	11.53	0.00	0.00	1.76	0.00	0.00	0.00	0.00	0.00	0.67	2.44	
8-Jul-14	0.00	4.06	4.44	4.94	0.87	1.06	0.00	15.37	0.00	0.00	1.44	0.00	0.00	0.00	0.00	0.00	-0.75	0.69	
9-Jul-14	0.00	4.80	4.39	4.21	1.27	0.66	0.00	15.33	0.00	0.00	1.29	0.00	0.00	0.00	0.00	0.00	-0.65	0.64	
10-Jul-14	0.00	0.75	0.05	0.60	0.00	0.66	0.00	2.06	0.00	0.00	1.68	0.00	0.00	0.00	0.00	0.00	0.78	2.46	
11-Jul-14	0.00	0.75	0.05	0.60	0.00	0.66	0.00	2.06	0.00	0.00	1.68	0.00	0.00	0.00	0.00	0.00	0.78	2.46	
12-Jul-14	0.00	0.86	0.00	0.61	0.00	0.82	0.00	2.28	0.00	0.00	-1.62	0.00	0.00	0.00	0.00	0.00	0.00	-1.62	
13-Jul-14	0.00	1.46	3.85	2.91	1.37	1.10	0.00	10.68	0.00	0.00	0.75	0.00	0.00	0.00	0.00	0.00	-0.70	0.05	
14-Jul-14	0.00	0.00	4.12	3.15	0.93	0.55	0.00	8.75	0.00	0.00	1.59	0.00	0.00	0.00	0.00	0.00	0.69	2.28	
15-Jul-14	0.00	4.17	4.53	3.15	1.46	0.90	0.00	14.21	0.00	0.00	1.59	0.00	0.00	0.00	0.00	-0.98	-0.68	-0.06	
16-Jul-14	0.00	1.59	4.53	3.15	1.46	0.90	0.00	11.63	0.00	0.00	1.59	0.00	0.00	0.00	0.00	-0.48	-0.66	0.46	
17-Jul-14	0.00	1.59	3.36	2.93	1.46	0.90	0.00	10.24	0.00	0.00	1.61	0.00	0.00	0.00	0.00	0.00	0.97	2.58	
18-Jul-14	0.00	4.63	3.85	3.05	1.92	1.03	0.00	14.48	0.31	1.64	1.61	0.00	0.00	0.00	0.00	0.00	0.71	4.27	
19-Jul-14	0.00	2.55	4.79	4.70	3.18	0.98	0.00	16.20	0.75	0.00	0.00	0.00	0.00	0.00	0.00	0.00	0.57	1.32	
20-Jul-14	0.00	3.09	5.41	4.97	3.24	1.07	0.00	17.78	0.00	0.00	0.71	0.00	0.00	0.00	0.00	0.00	-0.70	0.01	
21-Jul-14	0.00	0.18	9.41	3.79	3.34	1.21	0.00	17.93	0.00	0.00	1.72	0.00	0.00	0.00	0.00	0.00	0.48	2.20	
22-Jul-14	0.00	2.58	4.91	3.79	3.34	1.21	0.00	15.84	0.00	0.00	1.62	0.00	0.00	0.00	0.00	0.48	-0.59	1.51	
23-Jul-14	0.00	0.00	3.86	3.23	2.84	1.21	0.00	11.14	0.00	0.00	1.50	0.00	0.00	0.00	0.00	0.48	0.70	2.69	
24-Jul-14	0.00	0.00	2.34	1.54	2.30	1.55	0.00	7.72	0.00	0.00	1.66	0.00	0.00	0.00	0.00	0.00	0.82	2.48	
25-Jul-14	0.00	0.00	2.42	1.92	2.14	1.32	0.00	7.79	0.00	0.00	1.44	0.00	0.00	0.00	0.00	0.00	0.76	2.20	
26-Jul-14	0.00	0.75	4.25	3.81	1.93	1.33	0.00	12.08	0.00	0.00	1.61	0.00	0.00	0.00	0.00	0.00	0.79	2.40	
27-Jul-14	0.00	2.66	4.15	3.93	1.45	1.45	0.00	13.64	0.00	0.00	1.78	0.00	0.00	0.00	0.00	0.00	0.73	2.51	
28-Jul-14	0.00	5.06	4.81	4.43	1.57	3.59	0.00	19.45	0.00	0.00	2.19	0.00	0.00	0.00	0.00	0.00	-0.63	1.56	
29-Jul-14	0.00	1.40	4.81	3.15	1.70	1.51	0.00	12.57	0.00	0.00	1.83	0.00	0.00	0.00	0.00	0.00	0.79	2.62	
30-Jul-14	0.00	6.12	3.25	2.90	1.63	1.48	0.00	15.37	0.00	0.00	1.42	0.00	0.00	0.00	0.00	0.00	0.78	2.20	
31-Jul-14	0.00	1.59	2.84	2.46	0.74	1.53	0.00	9.16	0.00	1.64	1.72	0.00	0.00	0.00	0.00	0.82	4.18		
Total Jul	0.00	68.79	131.77	114.09	54.24	37.59	0.00	406.49	1.06	3.28	43.56	0.00	0.00	0.00	3.28	-0.50	6.11	56.78	

Date	12.3 Import - Export of ER with WR & NER during July 2014																			
	Export of WR to ER (WR-ER)							Import of WR from ER (ER - WR)							Export of ER to NER (ER - NER)			Import of ER from NER (NER - ER)		
	WR - ER 765 kV Dharamjygarh - Ranchi D/C	WR - ER 400 kV Sipat - Ranchi D/C	WR - ER 400 kV Raigarh - Sterlite D/C	WR - ER 400 kV Raigarh - Jharsuguda D/C	WR - ER 220 kV Korba - Budhipadar D/C	WR - ER 220 kV Raigarh - Budhipadar	Total WR - ER	WR - ER 765 kV Dharamjygarh - Ranchi D/C	ER - WR 400 kV Sipat - Ranchi D/C	ER - WR 400 kV Raigarh - Sterlite D/C	ER - WR 400 kV Raigarh - Jharsuguda D/C	ER - WR 220 kV Korba - Budhipadar D/C	ER - WR 220 kV Raigarh - Budhipadar	Total ER - WR	ER - NER 400 kV Binaguri - Bongaigaon D/C	ER - NER 220 kV Birpara - Salakati D/C	Total ER - NER	NER - ER 400 kV Binaguri - Bongaigaon D/C	NER - ER 220 kV Birpara - Salakati D/C	Total NER - ER
1-Jul-14	-0.31	-1.61	-0.04	-1.60	-0.08	0.00	-3.64	0.5	0.1	3.5	0.22	0.59	2.35	7.24	0.85	1.92	2.77	-0.79	0.00	-0.79
2-Jul-14	-0.65	-1.77	-0.74	-2.12	-0.34	-0.01	-5.62	0.1	0.1	2.9	0.05	0.31	1.74	5.14	0.76	1.82	2.59	-1.46	0.00	-1.46
3-Jul-14	-1.34	-1.79	-1.46	-2.34	-0.44	0.00	-7.37	0.5	0.1	3.4	0.26	0.13	1.05	5.40	0.40	1.37	1.77	-2.46	0.00	-2.46
4-Jul-14	-0.54	-0.47	-1.68	-0.94	-0.11	0.00	-3.74	0.5	0.4	3.2	0.00	0.50	1.81	6.35	0.39	1.20	1.59	-3.08	-0.01	-3.09
5-Jul-14	-1.25	-1.01	-0.71	-2.54	-0.04	0.00	-5.55	0.6	0.4	4.5	0.03	0.93	2.51	8.90	1.49	2.02	3.52	-0.44	0.00	-0.44
6-Jul-14	-1.81	-1.55	-1.49	-2.53	-0.26	0.00	-7.64	0.2	0.1	4.3	0.04	0.28	2.24	7.19	1.44	2.04	3.48	-0.19	0.00	-0.19
7-Jul-14	-2.68	-2.18	-2.12	-3.61	-0.27	0.00	-10.86	0.0	0.0	4.2	0.00	0.06	2.29	6.54	1.65	1.95	3.59	-0.05	0.00	-0.05
8-Jul-14	-2.76	-2.00	-1.90	-3.20	-0.28	0.00	-10.14	0.0	0.0	4.7	0.00	0.05	1.44	6.23	0.55	1.76	2.31	-0.81	0.00	-0.81
9-Jul-14	-1.57	-1.19	-1.24	-2.09	-1.04	-0.18	-7.30	0.3	0.2	5.1	0.00	0.08	0.72	6.40	0.45	1.61	2.05	-1.48	0.00	-1.48
10-Jul-14	-0.28	-0.23	-0.29	-0.48	-0.02	0.00	-1.29	1.3	1.0	9.3	1.25	1.62	1.65	16.11	0.64	1.64	2.28	-1.06	0.00	-1.06
11-Jul-14	-1.00	-0.61	-0.92	-1.53	0.00	0.00	-4.06	0.6	0.6	9.8	0.53	3.44	0.00	14.97	0.48	1.25	1.73	-1.96	0.00	-1.96
12-Jul-14	-1.24	-1.04	-1.02	-1.70	0.00	0.00	-5.01	0.5	0.3	9.4	0.22	2.52	0.00	12.99	0.75	1.61	2.36	-0.92	0.00	-0.92
13-Jul-14	-2.57	-1.90	-1.76	-2.97	0.00	0.00	-9.20	0.0	0.0	7.3	0.00	1.94	0.00	9.20	0.91	1.71	2.62	-0.48	0.00	-0.48
14-Jul-14	-1.91	-1.16	-1.97	-3.37	0.00	0.00	-8.40	0.1	0.1	6.9	0.00	2.36	0.00	9.50	1.35	1.66	3.01	-1.07	0.00	-1.07
15-Jul-14	-0.64	-0.51	-1.67	-2.85	0.00	0.00	-5.67	0.6	0.3	6.6	0.11	3.13	0.00	10.81	0.87	1.59	2.46	-0.77	0.00	-0.77
16-Jul-14	-3.01	-1.89	-3.72	-6.47	0.00	0.00	-15.09	0.0	0.1	8.3	0.00	1.75	0.00	10.18	0.60	1.37	1.97	-1.60	0.00	-1.60
17-Jul-14	-5.40	-3.58	-4.42	-7.71	0.00	0.00	-21.11	0.0	0.0	4.8	0.00	1.62	0.00	6.37	0.71	1.31	2.02	-1.97	0.00	-1.97
18-Jul-14	-5.84	-4.21	-5.06	-8.34	0.00	-0.01	-23.47	0.0	0.0	0.8	0.00	1.11	0.00	1.88	0.99	1.58	2.56	-1.32	0.00	-1.32
19-Jul-14	-4.90	-3.54	-4.56	-7.51	-0.03	-0.01	-20.55	0.0	0.0	0.5	0.00	0.93	0.00	1.43	0.68	1.33	2.02	-1.72	0.00	-1.72
20-Jul-14	-5.00	-3.66	-4.26	-7.10	-0.03	-0.01	-20.06	0.0	0.0	0.5	0.00	1.21	0.35	2.09	0.57	1.60	2.17	-1.18	0.00	-1.18
21-Jul-14	-2.47	-1.75	-3.49	-6.15	-0.01	0.00	-13.87	0.0	0.0	1.7	0.00	0.84	1.99	4.53	0.28	0.88	1.16	-1.17	-0.26	-1.42
22-Jul-14	-1.64	-1.06	-2.72	-4.73	0.00	0.00	-10.16	0.0	0.0	2.5	0.00	1.53	2.01	6.09	0.32	0.93	1.24	-0.94	-0.19	-1.14
23-Jul-14	-2.28	-1.54	-3.17	-5.43	0.00	0.00	-12.42	0.1	0.1	2.0	0.00	1.08	1.45	4.67	0.41	1.35	1.76	-1.29	0.00	-1.29
24-Jul-14	-2.20	-1.33	-2.68	-4.64	0.00	0.00	-10.85	0.0	0.1	1.7	0.00	1.28	1.64	4.72	0.71	1.55	2.26	-1.76	0.00	-1.76
25-Jul-14	-3.73	-2.25	-3.20	-5.50	-0.01	0.00	-14.67	0.0	0.0	2.3	0.00	0.97	2.01	5.26	1.79	1.72	3.52	-0.76	0.00	-0.76
26-Jul-14	-3.00	-3.86	-4.15	-7.17	-0.07	0.00	-18.25	0.0	0.0	1.6	0.00	0.30	1.49	3.37	0.88	1.44	2.31	-1.32	0.00	-1.32
27-Jul-14	-4.70	-3.16	-3.76	-6.53	0.00	0.00	-18.15	0.0	0.0	2.0	0.00	1.01	2.42	5.39	0.78	1.77	2.55	-0.54	0.00	-0.54
28-Jul-14	-6.56	-4.54	-4.68	-7.84	-0.03	0.00	-23.65	0.0	0.0	1.7	0.00	0.69	1.87	4.30	0.56	1.49	2.05	-1.35	0.00	-1.35
29-Jul-14	-5.65	-4.08	-4.57	-6.33	-0.22	0.00	-20.85	0.0	0.0	0.5	0.00	0.80	1.29	2.60	1.16	1.68	2.84	-0.13	0.00	-0.13
30-Jul-14	-3.80	-2.82	-3.60	-5.32	-1.11	-0.08	-16.74	0.0	0.0	1.5	0.00	0.17	0.00	1.64	0.96	1.64	2.59	-0.46	0.00	-0.46
31-Jul-14	-3.41	-2.36	-2.80	-3.90	-0.58	-0.51	-355.39	0.0	0.0	1.5	0.00	0.31	0.41	197.46	0.89	1.98	2.66	-0.18	0.00	-0.18
Total	-84.11	-64.65	-79.86	-134.56	-4.97	-0.80	-710.77	6.08	3.75	118.86	2.72	33.53	34.75	394.93	25.26	48.77	73.82	-34.71	-0.46	-35.17

Date	12.4 Import and Export of SR with ER & WR during July 2014											
	Export of ER to SR (ER - SR)			Import of ER from SR (SR - ER)			Export of WR to SR (WR-SR)			Import of WR from SR (SR - WR)		
	ER - SR HVDC Gazuwaka	ER - SR HVDC Talchar - Kolar	Total ER - SR	SR - ER HVDC Gazuwaka	SR - ER HVDC Talchar - Kolar	Total SR - ER	WR - SR HVDC Bhadrawati	WR - SR 765 kv Sholapur - Raichur	Total WR - SR	SR - WR HVDC Bhadrawati	SR - WR 765 kv Raichur - Sholapur	Total SR - WR
1-Jul-14	11.00	49.86	60.86	0.00	0.00	0.00	23.80	5.70	29.50	0.00	2.30	2.30
2-Jul-14	11.48	50.35	61.82	0.00	0.00	0.00	23.80	7.80	31.60	0.00	3.40	3.40
3-Jul-14	12.24	50.45	62.69	0.00	0.00	0.00	23.70	6.60	30.30	0.00	4.38	4.38
4-Jul-14	12.25	49.38	61.63	0.00	0.00	0.00	23.60	2.60	26.20	0.00	2.81	2.81
5-Jul-14	14.53	49.76	64.29	0.00	0.00	0.00	23.50	6.50	30.00	0.00	3.36	3.36
6-Jul-14	16.09	48.31	64.39	0.00	0.00	0.00	23.70	2.40	26.10	0.00	2.51	2.51
7-Jul-14	16.07	48.39	64.46	0.00	0.00	0.00	23.90	0.80	24.70	0.00	1.74	1.74
8-Jul-14	16.12	42.02	58.14	0.00	0.00	0.00	20.70	3.70	24.40	0.00	1.88	1.88
9-Jul-14	17.21	45.41	62.61	0.00	0.00	0.00	23.70	4.60	28.30	0.00	2.34	2.34
10-Jul-14	12.63	41.86	54.49	0.00	0.00	0.00	23.80	1.50	25.30	0.00	2.07	2.07
11-Jul-14	13.43	40.66	54.10	0.00	0.00	0.00	24.00	1.90	25.90	0.00	2.17	2.17
12-Jul-14	15.86	39.75	55.62	0.00	0.00	0.00	23.80	4.50	28.30	0.00	2.15	2.15
13-Jul-14	15.94	42.74	58.68	0.00	0.00	0.00	23.80	4.20	28.00	0.00	1.88	1.88
14-Jul-14	15.83	38.53	54.36	0.00	0.00	0.00	23.90	0.00	23.90	0.00	1.35	1.35
15-Jul-14	16.06	37.08	53.13	0.00	0.00	0.00	23.07	0.03	23.10	0.00	1.14	1.14
16-Jul-14	15.35	41.70	57.05	0.00	0.00	0.00	23.90	0.10	24.00	0.00	0.59	0.59
17-Jul-14	13.21	47.28	60.49	0.00	0.00	0.00	23.80	4.00	27.80	0.00	0.95	0.95
18-Jul-14	17.04	48.92	65.96	0.00	0.00	0.00	23.30	6.50	29.80	0.00	1.62	1.62
19-Jul-14	17.44	46.65	64.10	0.00	0.00	0.00	23.90	3.00	26.90	0.00	1.27	1.27
20-Jul-14	16.44	47.66	64.10	0.00	0.00	0.00	23.30	5.50	28.80	0.00	1.63	1.63
21-Jul-14	17.27	47.02	64.28	0.00	0.00	0.00	23.60	3.20	26.80	0.00	0.56	0.56
22-Jul-14	17.18	47.81	64.99	0.00	0.00	0.00	23.90	3.20	27.10	0.00	0.45	0.45
23-Jul-14	15.76	43.83	59.58	0.00	0.00	0.00	23.70	2.90	26.60	0.00	0.61	0.61
24-Jul-14	16.24	48.89	65.13	0.00	0.00	0.00	23.60	2.90	26.50	0.00	1.38	1.38
25-Jul-14	17.65	48.94	66.59	0.00	0.00	0.00	21.50	5.60	27.10	0.00	0.06	0.06
26-Jul-14	18.56	49.68	68.24	0.00	0.00	0.00	21.40	7.40	28.80	0.00	1.61	1.61
27-Jul-14	18.61	47.93	66.55	0.00	0.00	0.00	23.80	4.40	28.20	0.00	0.95	0.95
28-Jul-14	18.67	49.36	68.03	0.00	0.00	0.00	23.90	3.70	27.60	0.00	1.81	1.81
29-Jul-14	18.10	48.45	66.55	0.00	0.00	0.00	23.70	7.00	30.70	0.00	0.83	0.83
30-Jul-14	16.43	49.24	65.67	0.00	0.00	0.00	23.80	3.70	27.50	0.00	0.71	0.71
31-Jul-14	17.40	43.21	60.62	0.00	0.00	0.00	24.00	2.80	32.80	0.00	0.89	0.98
Total July '14	488.09	1431.12	1919.21	0.00	0.00	0.00	727.87	118.73	852.60	0.00	51.39	51.48

**13. भूटान , नेपाल एवं बांग्लादेश के साथ अंतरराष्ट्रीय विद्युत विनिमय
INTERNATIONAL EXCHANGE WITH BHUTAN, NEPAL AND BANGLADESH**

अप्रैल 2014 APRIL 2014 -जुलाई 2014 जुलाई 2014

अंतरराष्ट्रीय विद्युत विनिमय [भारत से दूसरे देश को आयात (+) / निर्यात (-)]
Transnational Exchange (Import=(+ve) /Export =(-ve))

माह MONTH	भूटान BHUTAN	नेपाल NEPAL	बांग्लादेश BANGLADESH
	Energy Exchange (In MU)	Energy Exchange (In MU)	Energy Exchange (In MU)
अप्रैल 2014 APR'14	78.02	-79.85	-276.56
मई 2014 MAY'14	271.28	-76.50	-273.69
जून 2014 JUN'14	586.46	-65.04	-282.55
जुलाई 2014 JULY 14	988.60	-66.50	-290.60
कुल Total	1924.36	-287.89	-1123.40

14. एसटीओए (द्विपक्षीय एवं सामूहिक) एवं डी एस एम बिलिंग का ब्योरा – माह जुलाई 2014
STOA (BILATERAL AND COLLECTIVE) & DSM BILLING DETAILS- July' 2014

द्विपक्षीय एसटीओए BILATERAL SHORT TERM OPEN ACCESS

	जुलाई 2014	July 14	Apr'14- Jun'14	
क्षे.भा.प्रे.के. का नाम Name of RLDC	लेन - देनों की संख्या No. of Transactions	अनुमोदित ऊर्जा (मि.यु.) Energy Approved(MU)	लेन - देनों की संख्या No. of Transactions	अनुमोदित ऊर्जा (मि.यु.) Energy Approved (MU)
ऊ.क्षे. NR	505	2293	1577	7635
प.क्षे. WR	229	578	712	2296
द.क्षे. SR	163	1061	829	4218
पू.क्षे. ER	189	913	636	3490
पूर्वोत्तर क्षे. NER	11	24	114	286
कुल TOTAL	1097	4869	2771	12356

एसटीओए SHORT TERM OPEN ACCESS

माह MONTH	सामूहिक एसटीओए Collective STOA		द्विपक्षीय एसटीओए Bilateral STOA	
	क्र्रेताओं / विक्रेताओं की सं. NO. of Buyers/Sellers	अनुमोदित ऊर्जा (मि.यु.) Approved Energy (MU)	क्र्रेताओं / विक्रेताओं की सं. NO. of Buyers/Sellers	अनुमोदित ऊर्जा (मि.यु.) Approved Energy (MU)
अप्रैल 2014 APR'14	2015	2143	783	3765
मई 2014 MAY'14	1962	2383	930	3872
जून 2014 JUN'14	2123	2643	1058	4719
जुलाई 2014 July 2014	2240	2351	1110	5556
कुल TOTAL	8340	9520	3881	17912.1853

मासिक डी एस एम बिलिंग का ब्योरा 2014-15
 MONTHLY DSM BILLING DETAILS 2014-15

अनंतिम आकड़े
 subject to change
 provisional data

करोड़ रु. में (RS. IN CRORES)

क्षेत्र REGION	उत्तरी क्षेत्र NORTH	पश्चिमी क्षेत्र WEST	पूर्वी क्षेत्र EAST	दक्षिणी क्षेत्र SOUTH	पूर्वोत्तर क्षेत्र NORTH EAST	अखिल भारतीय स्तर ALL INDIA
30June to 6th July	52	13	3	15	6	89
7th July to 13th July	96	23	6	22	7	154
14th July to 20th July	49	7	4	12	4	76
21st July to 27th July	68	9	6	16	5	104

15. पावर मार्केट की सूचना (स्रोत : आई.ई.एक्स. एव पी.एक्स.आई.एल.)
POWER MARKET INFORMATION (Source IEX & PXIL)

पावर एक्सचेंज के माध्यम से विनिमय - माह जुलाई 2014

EXCHANGES THROUGH POWER EXCHANGES -JULY'2014

क्र. स. S. No.	क्षेत्रीय ईकाई Regional Entity	क्षेत्र Region	पावर एक्सचेंज के माध्यम से (मि.यु. मे) Through Power Exchange in MU	
			विक्रय Sale	क्रय Purchase
1	पंजाब Punjab	उत्तरी क्षेत्र NR	0.00	179.02
2	हरियाणा Haryana		60.56	99.03
3	राजस्थान Rajasthan		7.99	355.50
4	दिल्ली Delhi		90.81	76.73
5	उत्तर प्रदेश Uttar Pradesh		0.00	190.51
6	उत्तराखंड Uttarakhand		14.52	34.53
7	हिमाचल प्रदेश Himachal Pradesh		301.62	0.68
8	जम्मू और कश्मीर J & K		74.68	17.10
9	केंद्र शासित चंडीगढ़ UT Chandigarh		0.00	8.17
10	ए डी हाइड्रो AD Hydro		35.73	0.00
11	करचम वांगत् KW		183.38	0.00
12	श्री सीमेंट Shree Cement		4.57	0.00
13	नाथपा झाकरी Nathpa Jhakri		27.92	0.00
14	बैरासूल Baira Siul HEP(BS0)		0.00	0.00
15	चमेरा -1 Chamera-I HEP(CM1)		0.00	0.00
16	चमेरा -2 Chamera-II HEP(CM2)		0.00	0.00
17	धौलीगंगा Dhauliganga HEP(DG0)		0.00	0.00
18	धौलीगंगा Dulahasti HEP(DU0)		0.00	0.00
19	सलाल Salal HEP(SL0)		0.00	0.00
20	सेवा -2 Sewa-II NHPC(SW2)		0.00	0.00
21	टनकपुर Tanakpur HEP(TP0)		0.00	0.00
22	उरी Uri HEP(UR0)		0.00	0.00
23	लांको बुधिल LANCO Budhil		20.90	0.00
24	चमेरा-3 chamera 3		0.00	0.00
25	अदानी एचवीडीसी ADANI HVDC(NORGU0)		0.00	0.00
26	मलाना MALANA		9.00	0.00
27	उरी-II Uri-II HEP(UR2)		0.00	0.00
28	मध्य प्रदेश MP		पश्चिमी क्षेत्र WR	14.18
29	महाराष्ट्र Maharashtra	77.95		260.43
30	गुजरात Gujarat	178.70		294.69
31	छत्तीसगढ़ Chattisgarh	115.24		22.43
32	गोवा Goa	0.00		0.00
33	दमन और दीव Daman and Diu	0.00		27.38
34	दादरा और नगर हवेली Dadra & Nagar Haveli	0.00		0.00
35	जिंदल JD	234.27		0.00
36	लांको अमरकटक LANCO AMK	0.00		0.00
37	आर्यन कोल ACB India Limited	55.05		0.00
38	जिंदल स्टील एंड पावर Jindal Steel and Power Ltd	46.72		0.00
39	बालको -2 Balco-II	0.54		26.63
40	स्टरलाइट Sterlite(w3rse0)	162.76		0.00
41	एमको EMCO	11.63		0.00
42	वन्दना विद्युत VANDANA VIDYUT	30.03		0.00
43	एस्सार पावर ESSAR POWER	0.00		0.00
44	एस्सार स्टील ESSAR STEEL	0.00		113.21
45	के एस के महानदी KSK Mahanadi	0.00		0.00
46	जिंदल स्टील -II Jindal Stg-II	10.09		0.00
47	कोरबा (प.) Korba(W) Comp. Ltd.	0.00		0.00
48	डी बी पावर D B Power	58.65	0.00	

15. पावर मार्केट की सूचना (स्रोत : आई.ई.एक्स. एव पी.एक्स.आई.एल.) POWER MARKET INFORMATION (Source IEX & PXIL)				
पावर एक्सचेंज के माध्यम से विनिमय - माह जुलाई 2014 EXCHANGES THROUGH POWER EXCHANGES -JULY'2014				
क्र. स. S. No.	क्षेत्रीय ईकाई Regional Entity	क्षेत्र Region	पावर एक्सचेंज के माध्यम से (मि.यु. मे) Through Power Exchange in MU	
			विक्रय Sale	क्रय Purchase
49	आंध्र प्रदेश Andhra Pradesh	दक्षिणी क्षेत्र SR	2.55	114.14
50	कर्नाटक Karnataka		117.82	27.65
51	केरल Kerala		3.41	21.19
52	तमिलनाडु Tamilnadu		0.00	4.74
53	पॉण्डिचेरी Pondicherry		0.00	0.00
54	गोवा Goa		0.00	0.00
55	लान्को कॉन्डापल्ली LANCO_KONDPLY		0.00	0.00
56	सिमापुरी SIMHAPURI		11.70	0.00
57	मीनाक्षी MINAXI		0.00	1.62
58	तेलंगाना TELANGANA		14.02	134.20
59	पश्चिम बंगाल West Bengal	पूर्वी क्षेत्र ER	55.85	48.05
60	उड़ीशा Odisha		3.89	30.89
61	बिहार Bihar		0.00	89.93
62	झारखंड Jharkhand		0.00	0.00
63	सिक्किम Sikkim		55.72	0.00
64	दामोदर घाटी परियोजना DVC		29.03	0.00
65	स्टरलाइट STERLITE		0.00	0.00
66	मैथन पावर लिमिटेड Maithon P. Ltd		16.17	0.00
67	आधुनिक पा. लिमिटेड Adhunik P.Ltd		10.08	0.00
68	चुजाचैन Chuzachen HEP		31.40	0.00
69	रंगित Rangit HEP	9.42	0.00	
70	तीस्ता Teesta HEP	46.70	0.00	
71	जीएमआर कमलंगा GMR Kamalanga	25.16	0.00	
72	जिंदल आई पी टी एल JIPTL	22.54	0.00	
73	अरुणाचल प्रदेश Arunachal Pradesh	पूर्वोत्तर क्षेत्र NER	7.99	0.36
74	असम Assam		0.11	98.43
75	मणिपुर Manipur		4.82	0.27
76	मेघालय Meghalaya		8.85	10.37
77	मिज़ोरम Mizoram		7.18	0.00
78	नागालैंड Nagaland		0.00	0.00
79	त्रिपुरा Tripura		20.52	0.61
80	अगरतला जीटीपीपी Agartala GTPP_AG0		0.00	0.00
81	कोपिली KOPILI_KP1		0.00	0.00
82	असम जीबीपीपी Assam GBPP_KT0		0.00	0.00
83	लोकटक LOKTAK		8.92	0.00
84	रंगानदी Ranganadi		0.00	0.00
85	दोयांग Doyang		0.00	0.00
86	पलाताना Palatana		10.08	0.00
कुल Total			2351.44	2351.44

16. RENEWABLE ENERGY CERTIFICATE MECHANISM**MONTH:-JULY 2014****RE Source & Unit wise break up (July,14)**

Sr.No	Source Wise	Accreditation		Registration	
		Capacity (MW)	Unit	Capacity (MW)	Unit
1	Wind	30.9	2	51	5
2	Urban or Municipal Waste	0	0	0	0
3	Solar Thermal	0	0	0	0
4	Solar PV	20.4	8	20.9	11
5	Small Hydro	0	0	0	0
6	Others	0	0	0	0
7	Geothermal	0	0	0	0
8	Biomass	0	0	31.2	2
9	Bio-fuel cogeneration	15	2	0	0
	Total	66.3	12	103.1	18

RECs Issued (July,14)

Sr.No.	Non Solar	Solar	Total
1	1338162	55545	1393707

Redemption of REC (July 14)

Sr.No.	Non Solar	Solar	Total
1	31809	6633	38442

16. RENEWABLE ENERGY CERTIFICATE MECHANISM**MONTH:-JULY 2014****RE Source & Unit wise break up (Apr,14-July,14)**

Sr.No	Source Wise	Accreditation		Registration	
		Capacity (MW)	Unit	Capacity (MW)	Unit
1	Wind	99.6	7	85.56	16
2	Urban or Municipal Waste	0	0	0	0
3	Solar Thermal	0	0	0	0
4	Solar PV	77.66	43	127.8	64
5	Small Hydro	41.98	4	85.48	8
6	Others	0	0	0	0
7	Geothermal	0	0	0	0
8	Biomass	27.8	1	63.7	6
9	Bio-fuel cogeneration	31.63	5	6.98	1
	Total	278.67	60	369.52	95

RECs Issued (Apr,14-July,14)

Sr.No.	Non Solar	Solar	Total
1	3289298	159841	3449139

Redemption of REC (Apr,14-July,14)

Sr.No.	Non Solar	Solar	Total
1	279872	11396	291268

16. RENEWABLE ENERGY CERTIFICATE MECHANISM

MONTH:-JULY 2014

RE Source & Unit wise break up Since Inception to July,14

Sr.No	Source Wise	Accreditation		Registration	
		Capacity (MW)	Unit	Capacity (MW)	Unit
1	Wind	2444.98	615	2235.74	582
2	Urban or Municipal Waste	8	1	0	0
3	Solar Thermal	3	1	0	0
4	Solar PV	532.18	246	514.68	232
5	Small Hydro	342.49	37	288.49	31
6	Others	1.67	1	1.67	1
7	Geothermal	0	0	0	0
8	Biomass	695.16	72	705.16	73
9	Bio-fuel cogeneration	815.05	88	745.05	82
	Total	4842.52	1061	4490.78	1001

RECs Issued since Inception to July 14

Sr.No.	Non Solar	Solar	Total
1	15635432	434528	16069960

Redemption of REC since Inception to July 14

Sr.No.	Non Solar	Solar	Total
1	6553385	92089	6645474

REC Closing balance as on 30.06.2014

Sr.No.	Non Solar	Solar	Total
1	9082047	342439	9424486

17. माह जुलाई 2014 की मुख्य घटनाएँ / Important Events of month July 2014

Outage		Region	Name of Element	Owner / Agency	Event	Generation/ Load Loss	Revival		Category as per CEA Grid
Date	Time						Date	Time	
A	B	C	D	E	F	G	H	I	J
2-Jul-14	14:03	NR	1) 220 KV Wazirabad-Kashmiri Gate D/C 2) 220 KV Wazirabad-Geeta Colony D/C 3) Pragati and Rajghat Generation	DTL	Due to inclement weather , towers at location no-14 & 15 of 220 KV Wazirabad-Kashmiri gate D/C line collapsed and fell on adjacent Wazirabad-Geeta Colony line causing tripping of elements given in column D.	Gen Loss- 400 MW Load Loss- 350 MW	03-07-2014	19:45	GD-I
3-Jul-14	03:16	WR	1) 400 KV Lonikhand-New Lonikhand D/C 400 KV Karad-Lonikhand 400/220kV ICT-I,II at Lonikhand 400 KV Pune-Lonikhand S/C	PGCIL	Due to 400 KV CT failure at Lonikhand S/S, 400 KV Bus bar protection operated and given elements in column D tripped.	Nil	03-07-2014	04:41	GI-II
7-Jul-14	15:19	ER	1). 220 KV Purnea-Dalkhola(PG) D/C 2). 220KV Purnea(old)-Purnea(new) D/C 3). 220 KV Purnea-Madhepura –I	BSPHCL/PG	Due to Insulator decapping of 220 KV Purnea-Dalkhola –II at loc no 41, elements given in Column D tripped.	Load Loss=150MW	07-07-2014	17:00	GD-I
7-Jul-14	19:55	ER	1). 132kV Purnea-Purnea -I,II &III 2).132kV Purnea-Frobisganj	BSPHCL	Due to fault in 132kV Purnea-Forbisganj line, elements given in column D tripped	Load Loss=120MW	07-07-2014	20:07	GD-I
8-Jul-14	13:53	ER	1). 220kV Chandil-Ranchi 2). 220kV Chandil-Santaldih 3). 220kV Chandil-Ramchandrapur 4). 132kV Chandil-Hatia 5). 132kV Chandil-rajk'swan 6). 132kV Chandil-Rajk'swan-Adityapur 7).132kV Ramchandrapur-Adityapur D/C	JSEB/PG	Due to failure of R-Phase LA of 100MVA 132/33kV ICT-IV at Adityapur, given elements in column D tripped	Load Loss=111MW	08-0-2014	14:27	GD-I
8-Jul-14	17:21	ER	1). 220 kV Budhipadar -Raigarh S/C 2). 220 kV Budhipadar -Korba D/C 3). 220 kV Budhipadar -Tarkera D/C 4). 220 kV Budhipadar –Vedanta D/C 5). 220 kV Budhipadar –IB Valley Q/C 6). 220 kV Budhipadar –Katapalli D/C 7). 220 kV Budhipadar –Basundhara S/C 8). 220 kV Budhipadar –SPS S/C 9). 220 kV Budhipadar –BHUSAN D/C 10).220/132 kV ,160 MVA ICT-I & II, at Budhipadar 11). Unit#1 (600 MW) at SEL (Vedanta) 12). units #1&2 (210 MW each) at IB Valley	OPTCL/CSE B	Due to Bus Fault at 220kV Budhipadar S/S, all the elements given in column D tripped.	Load Loss=450MW Gen Loss=780MW	08-07-2014	18:56	GD-I

12-Jul-14	16:57	ER	<p>1).220 KV Bokaro- Chandrapura – I & II. 2).220 KV Bokaro- Ramgarh- I & II. 3). 220 KV Bokaro- Jamshedpur – I & II. 4). 150 MVA 220/132 KV ICT- I & II at Bokaro. 5). 132 KV Bokaro – Bokaro 'A' – I & II. 6). 132 KV Bokaro- Barhi- I & II 7). 132 KV Bokaro- Gomia- I & II. 8). 220 KV Joda- Jindal- Jamshedpur. 9). 220 KV Joda- Ramchandrapur. 10). 220 KV Joda- TTPS- I & II. 11). 220 KV TTPS- TSTPS. 12). 220 KV TTPS- Meramundali- I & II. 13). 220 KV TTPS- Nalco. 14). 132 KV Lines at TTPS, Joda & Bokaro S/s. 15). Unit 2& 3(2*210 MW)at Bokaro 16). Unit -I,II,III,IV(4*60 MW) at Talcher</p>	DVC/OPTC L/JSEB	Major tripping occurred in GRIDCO, JSEB & DVC network which involved tripping of 22 elements including 220&132 KV transmission lines , ICTs as well as generating units at Bokaro & Talcher TPS.	Load Loss=340MW Gen Loss=560MW	12-07-2014	19:30	GD-I
14-Jul-14	1003 hrs	ER/SR	<p>1). Talcher-Kolar Pole-I 2). 220kV Kolar(PG)-Chintamani D/C 3). 220kV Kolar(PG)-Kolar(KP) D/C</p>	PG	Due to problem in Valve Cooling UPS at Talcher. Pole 1 received ESOF signal from Talcher and Blocked at Kolar end. Changeover to Metallic Return mode was successful and the final DC power in Pole 2 settled at 1000MW.Due to generation of SPS-1 at HVDC Kolar, all the 4 no's 220kV feeders at Kolar tripped	Load Loss=Nil	14.07.2014	1032 hrs	GI-I
25-Jul-14	1153 hrs	NR	<p>1). 400kV Auraiya-Kanpur-D/C 2). 400kV Auraiya-Agra(PG) D/C 3). 220kV Auraiya-Mehgaon 4). 220kV Auraiya-Malanpur</p>	PG	Due to bursting of Y-ph CT of 400 KV Auriya-Kanpur-II at Auriya,bus bar protection operated at 400kV Auraiya S/S and given elements in Coulum D tripped	Gen Loss=100MW	25.07.2014	2346hrs	GD-I
26-Jul-14	2331 hrs	ER	<p>1).220kV Biharshriff-Bodhgaya 2). 315MVA 400/220kV ICT-I,II and III at Biharshariff(PG)</p>	BSPHCL	Due to fault in 220kv Biharsarif-Bodhgaya line which was idle charged from Biharsarif (BSEB) all the 3 no. 400/220 KV ICTs at Biharshariff(PG) tripped to clear the fault beyond 220kv Biharsarif. S/S of BSEB.	Load Loss=465MW	27.07.2014	0005hrs	GD-I

18. NEW ELEMENTS COMMISSIONED in JULY-2014

COMMISSIONING OF NEW GENERATING UNITS

REGION	SL. NO.	CONSTITUENT	UNIT NAME	UNIT NO	CAPACITY (MW)	DATE	TIME
			NIL				

COMMISSIONING OF NEW TRANSMISSION LINES

REGION	SL. NO.	CONSTITUENT	LINE NAME	CKT NO	KV	DATE	TIME
WR	1	POWERGRID	WARDHA - AURANGABAD	II	765	03.07.14	02:31
	2	POWERGRID	SATNA- GWALIOR	II	765	31.07.14	00:35
WR-ER	3	POWERGRID	DHARAMJAIGARH-JHARSUGUDA	II	765	29.07.14	16:00
	4	POWERGRID	DHARAMJAIGARH-JHARSUGUDA	I	765	29.07.14	00:00
SR	5	TANTRANSCO	TIRUVALLAM-KALINVEDAPATTU	I	400	24.07.14	18:57
	6	TANTRANSCO	TIRUVALLAM-KALINVEDAPATTU	II	400	24.07.14	19:56
	7	POWERGRID	TIRUVALLAM-PUGULUR	I	400	23.07.14	19:42

COMMISSIONING OF NEW ICTS

REGION	SL. NO.	CONSTITUENT	STATION NAME	KV RATIO	CAPACITY (MVA)	DATE	TIME
WR	1	POWERGRID	Bhopal	765/400	1500	03.07.2014	16:45
NR	2	POWERGRID	New Wanpoh	400/220	315	01.07.2014	00:00
ER	3	POWERGRID	Rangpo	400/220	315	01.07.2014	19:18
	4	POWERGRID	Jharsuguda	765/400	1500	03.07.2014	19:10

COMMISSIONING OF BUS REACTORS

REGION	SL.NO.	CONSTITUENT	STATION NAME	KV	CAPACITY (MVAR)	DATE	TIME
WR	1	POWERGRID	BHATAPARA	400	125	24.07.2014	19:56
WR	2	POWERGRID	RAIGARH	400	125	30.07.2014	19:30
WR	3	POWERGRID	SHUJALPUR	400	125	31.07.2014	00:35
WR	4	POWERGRID	INDORE	765	3 x 80	31.07.2014	18:27

COMMISSIONING OF LINE REACTORS

REGION	SL. NO.	CONSTITUENT	STATION NAME	LINE NAME	KV	CAPACITY (MVAR)	DATE	TIME
WR	1	POWERGRID	BHOPAL	BHOPAL INDORE	765	3 x 80 MVAR	23.07.2014	19:35

19.विद्युत विभव रूपरेखा माह - जुलाई 2014
VOLTAGE PROFILE - JULY 2014

क्र.स. Sl. No.	क्षेत्र REGION	उपकेंद्र SUBSTATION	VOLTAGE < V(lower)* (V=122,380,728 kV)	V(lower) < VOLTAGE < V(upper)*	VOLTAGE > V(upper)* (V=145, 420, 800 kV)	उच्चतम (कि.वो.) Maximum (kV)	निम्नतम (कि.वो.) Minimum (kV)	औसत (कि.वो.) Average (kV)
1	पूर्वी क्षेत्र ER	फरक्का FARAKKA	0%	93%	7%	424	406	416
2		कहलगाँव KAHALGAON	0%	47%	53%	427	409	419
3		तालचर TALCHER	0%	100%	0%	412	397	405
4		पूर्णिया PURNEA	0%	97%	3%	422	397	412
5		मुजफ्फरपुर MUZAFFARPUR	0%	100%	0%	418	388	406
6		जमशेदपुर JAMSHEDPUR	0%	31%	69%	431	410	420
7		रेंगाली RENGALI	0%	100%	0%	408	393	401
8		जेयपुर JEYPORE	0%	97%	3%	437	384	412
1	उत्तरी क्षेत्र NR	नल्लागढ़ NALLAGARH	0%	100%	0%	418	387	405
2		भिवाड़ी BHIWADI	0%	81%	19%	430	394	413
3		बल्लभगढ़ BALLABGARH	0%	89%	11%	428	387	410
4		इलाहाबाद ALLAHABAD	0%	98%	2%	427	399	413
5		हिसार HISSAR	0%	100%	0%	415	384	400
6		बवाना BAWANA	0%	96%	3%	421	391	406
7		कानपुर KANPUR	0%	99%	1%	425	392	409
8		बस्सी BASSI	0%	74%	26%	413	391	415
9		लखनऊ LUCKNOW 765 kV	0%	99%	1%	789	722	757
10		मोगा MOGA	0%	100%	0%	424	387	404
11		रतनगढ़ RATANGARH	0%	98%	2%	420	387	406
1	पश्चिमी क्षेत्र WR	आसोज ASOJ	0%	96%	4%	421	396	399
2		इटारसी ITARSI	0%	91%	9%	426	397	414
3		जैतपुर JETPUR	0%	97%	3%	421	395	399
4		कासोर KASOR	0%	97%	3%	424	399	412
5		कोल्हापुर KOLHAPUR	0%	100%	0%	418	400	418
6		बीना BINA	0%	37%	63%	423	393	411
7		ग्वालियर GWALIOR	0%	100%	0%	418	387	404
8		रायपुर RAIPUR	0%	13%	87%	433	411	424
9		जबलपुर JABALPUR	0%	98%	2%	424	400	406
10		धुले DHULE	0%	85%	15%	433	383	420
1	दक्षिणी क्षेत्र SR	श्रीपेरुपुडूर SRIPERUPUDUR	0%	100%	0%	420	391	405
2		नेवेली NEYVELI	0%	90%	10%	425	399	413
3		सेलम SALEM	0%	100%	0%	415	381	400
4		बंगलूरु BANGALORE	1%	99%	1%	419	373	398
5		होसूर HOSUR	0%	100%	0%	415	380	398
6		रामागुंडम RAMAGUNDAM	0%	99%	1%	422	406	414
7		विजयवाड़ा VIJAYAWADA	0%	71%	29%	433	412	423
8		तिरुवनंतपुरम TIRIVANDRUM	2%	100%	0%	420	374	401
9		हैदराबाद HYDERABAD	0%	73%	26%	429	378	411
1	पूर्वोत्तर क्षेत्र NER	मिसा MISA	0%	100%	0%	417	391	405
2		बलिपारा BALIPARA	0%	100%	0%	414	390	400
3		बोंगाईगाँव BONGAIGAON	0%	100%	0%	409	388	398
4		हाफ्लोंग HAFLONG 132 kV	0%	100%	0%	155	131	132
5		आइजोल AIZWAL 132 kV	0%	91%	9%	137	126	129
6		कुमारघाट KUMARGHAT 132 kV	0%	100%	0%	139	126	130
7		इम्फाल IMPHAL 132 kV	74%	91%	9%	130	113	118
8		ख्लेरियट Khlieriat_PG 132 kV	0%	100%	0%	156	131	132

*Percentage is calculated w.r.t. Time of one month.



POWER SYSTEM OPERATION CORPORATION LIMITED

पावर सिस्टम ऑपरेशन कारपोरेशन लिमिटेड

NATIONAL LOAD DESPATCH CENTRE – राष्ट्रीय भार प्रेषण केन्द्र

POWERGRID, B-9, Qutab Institutional Area,
Katwaria Sarai, New Delhi-110016.