

पावर सिस्टम ऑपरेशन कारपोरेशन लिमिटेड

(पावरग्रिड की पूर्ण स्वामित्व प्राप्त सहायक कंपनी)

POWER SYSTEM OPERATION CORPORATION LIMITED

(A wholly owned subsidiary of POWERGRID)



पंजीकृत एवं केन्द्रीय कार्यालय : बी - 9, कुतुब इंस्टीट्यूशनल एरिया, कटवारिया सराय, नई दिल्ली - 110 016
Registered & Corporate Office : B - 9, Qutab Institutional Area, Katwaria Sarai, New Delhi - 110 016
Website : www.nldc.in, www.nldcindia.in, Tel. : 011-26536832, 26524522, Fax : 011-26524525, 26536901

संदर्भ संख्या:-POSOCO/NLDC/GM/ 683

दिनांक: 24.01.2013

सेवा में,

वितरण सूची के अनुसार

विषय:- निष्पादन रिपोर्ट - दिसंबर 2012

महोदय,

आई०ई०जी०सी०-2010 के प्रावधान के अनुसार, - दिसंबर 2012 माह की अखिल भारतीय प्रणाली की निष्पादन रिपोर्ट

धन्यवाद

भवदीय

(अवधेश मणि)

महाप्रबंधक

(रा०भा०प्रे०के०)

संलग्नक: मासिक प्रणाली रिपोर्ट

Distribution List

1. Secretary ,CERC, 3rd & 4th Floor , Chanderlok Building,36,Janpath,New Delhi-110001
2. Chief Engineer(GM),CEA,Sewa Bhavan, R.K.Puram , New Delhi-110066
3. Member Secretary ,NRPC,18/A,SJSS Marg, Katwaria Sarai,New Delhi-110016
4. Member Secretary ,WRPC,F-3,MIDC Area,Andheri (East),Mumbai-400093
5. Member Secretary,SRPC,29,Race Course Cross Road,Bangalore-560009
6. Member Secretary,ERPC,14,Golf Club Road , Kolkata-7000033
7. Member Secretary,NERPC,Meghalaya State Housing Finance Cooperative Society Ltd.
Building,Nongrim Hills , Shillong -793003
8. General Manager , ERLDC,14, Golf Club Road , Kolkata-7000033
9. General Manager, WRLDC,F-3,MIDC Area,Andheri (East),Mumbai-400093
10. General Manager, NRLDC,18/A,SJSS Marg, Katwaria Sarai,New Delhi-110016
11. Executive Director, SRLDC, 29,Race Course Cross Road,Bangalore-560009
12. General Manager, NERLDC,Dongtieh,Lower Nongrah,Laplang,Shillong-793006

POWER SYSTEM OPERATION CORPORATION LTD
NATIONAL LOAD DESPATCH CENTRE



OPERATIONAL PERFORMANCE REPORT FOR THE
MONTH OF DECEMBER 2012

CONTENTS

1. SUMMARY OF REPORT FOR THE MONTH OF DECEMBER 2012
2. REGION WISE INSTALLED CAPACITY
3. PEAK DEMAND MET AT NATIONAL LEVEL
4. ENERGY CONSUMPTION AT NATIONAL LEVEL
5. FREQUENCY PROFILE
6. HYDRO GENERATION AT NATIONAL LEVEL
7. WIND GENERATION AT NATIONAL LEVEL
8. PEAK DEMAND & ENERGY MET AT REGIONAL LEVEL
9. SCHEDULE & DRAWAL AT REGIONAL LEVEL
10. INTER-REGIONAL EXCHANGES
11. BILATERAL SHORT-TERM OPEN ACCESS & UI DETAILS
12. POWER MARKET INFORMATION
13. RENEWABLE ENERGY CERTIFICATE MECHANISM
14. IMPORTANT EVENTS/DISTURBANCES
15. IMPORTANT ELEMENTS COMMISSIONED
16. VOLTAGE PROFILE

SUMMARY OF REPORT FOR THE MONTH OF DECEMBER 2012

- During the month of December 2012, the overall system was running normal to the large extent. The maximum of all India peak demand met was 116239 MW (on 31 -12-2012) which is 7.1% more as compared to last year December month demand (108540 MW) and 4.8% more as compared to November 2012 demand(110870 MW).
- For 84.1% of time the NEW grid frequency was in the IEGC band (49.7 – 50.2 Hz) against 85.8% of the time in the last month (November 2012). For SR Grid, the frequency remained within the IEGC band for 93.4 % of the time against 90.4 % of the time in the last month (November 2012).
- All India energy consumption was 76562 MU at the average of 2470 MU/day which is 3.1% more than that of last month (November 2012) average energy consumption (71861MUs, Average 2395 MU/day) and 5.6% more than the last year December month average energy consumption (72536MU, Average 2340 MU/day).
- There was around 10.4% decrement in average all India Hydro generation compared to last year & 8.2% decrement compared to last month.
- Regarding wind generation, there was around 80% increment in average all India wind generation compared to last month. December 2012 average wind generation was 45MU/day against 25 MU/day in November 2012.
- The Operation of the Grid was normal during the month except few events given in **Important Events/ Disturbances**.

6. ALL INDIA REGIONWISE GENERATING INSTALLED CAPACITY (MW) OF POWER UTILITIES INCLUDING ALLOCATED SHARES IN JOINT AND CENTRAL SECTOR UTILITIES

(As on 31-12-12)

SL. NO.	REGION	THERMAL				Nuclear	HYDRO (Renewable)	R.E.S.@ (MNRE)	TOTAL
		COAL	GAS	DSL	TOTAL				
1	Northern	31323.50	4671.26	12.99	36007.75	1620.00	15456.75	4623.24	57707.74
2	Western	43099.50	8254.81	17.48	51371.79	1840.00	7447.50	8450.04	69109.33
3	Southern	23782.50	4962.78	939.32	29684.60	1320.00	11353.03	12096.78	54454.41
4	Eastern	22607.88	190.00	17.20	22815.08	0.00	3882.12	436.71	27133.91
5	N. Eastern	60.00	824.20	142.74	1026.94	0.00	1200.00	243.28	2470.22
6	Islands	0.00	0.00	70.02	70.02	0.00	0.00	6.10	76.12
7	All India	120873.38	18903.05	1199.75	140976.18	4780.00	39339.40	25856.14	210951.72

Captive Generation Capacity in Industries having demand of 1 MW or above, Grid interactive(as on 31-03-2011)=34444.12 MW

Source-CEA Website

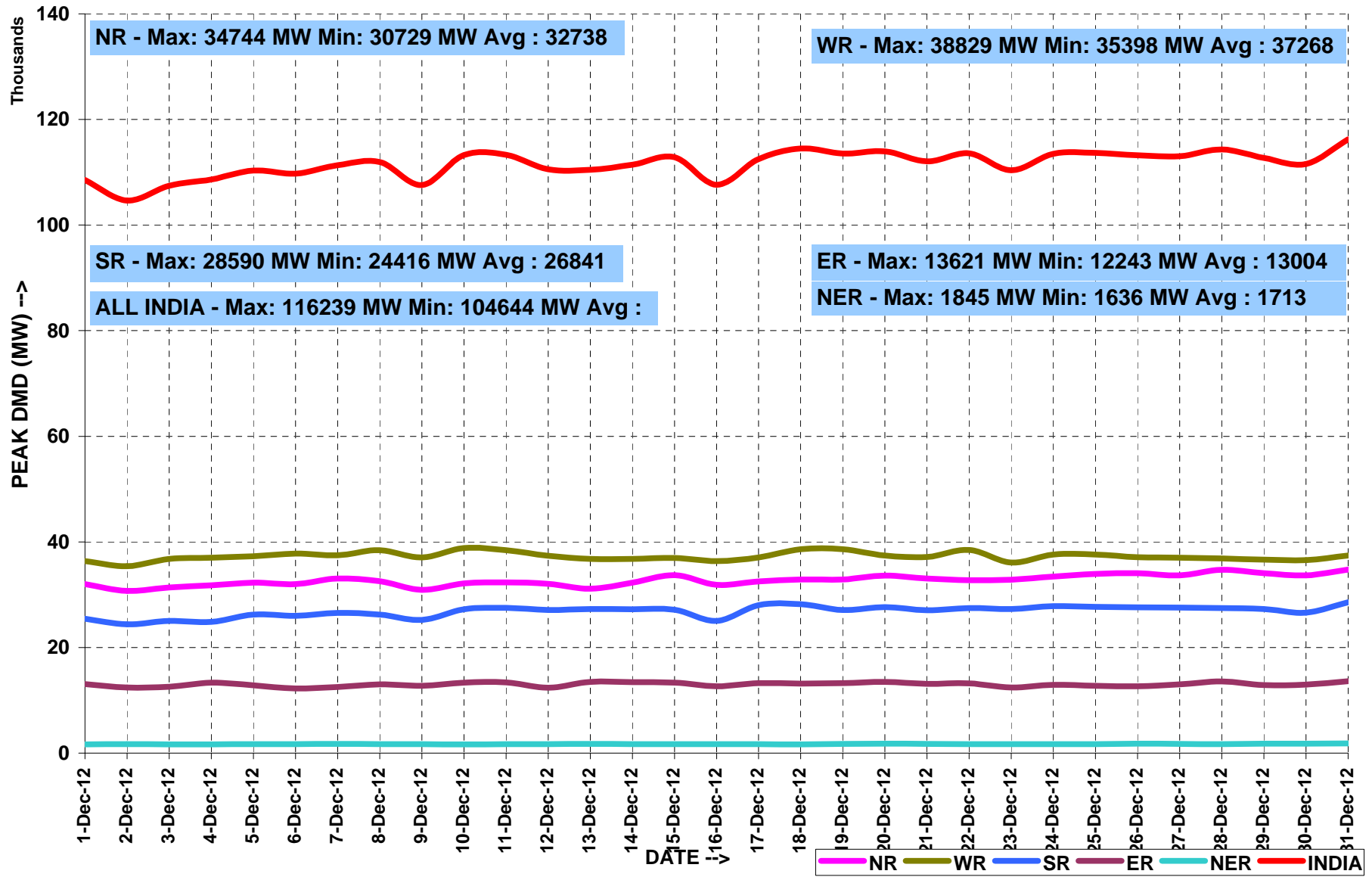
PEAK DEMAND MET AT NATIONAL LEVEL

MONTH:- DECEMBER 2012

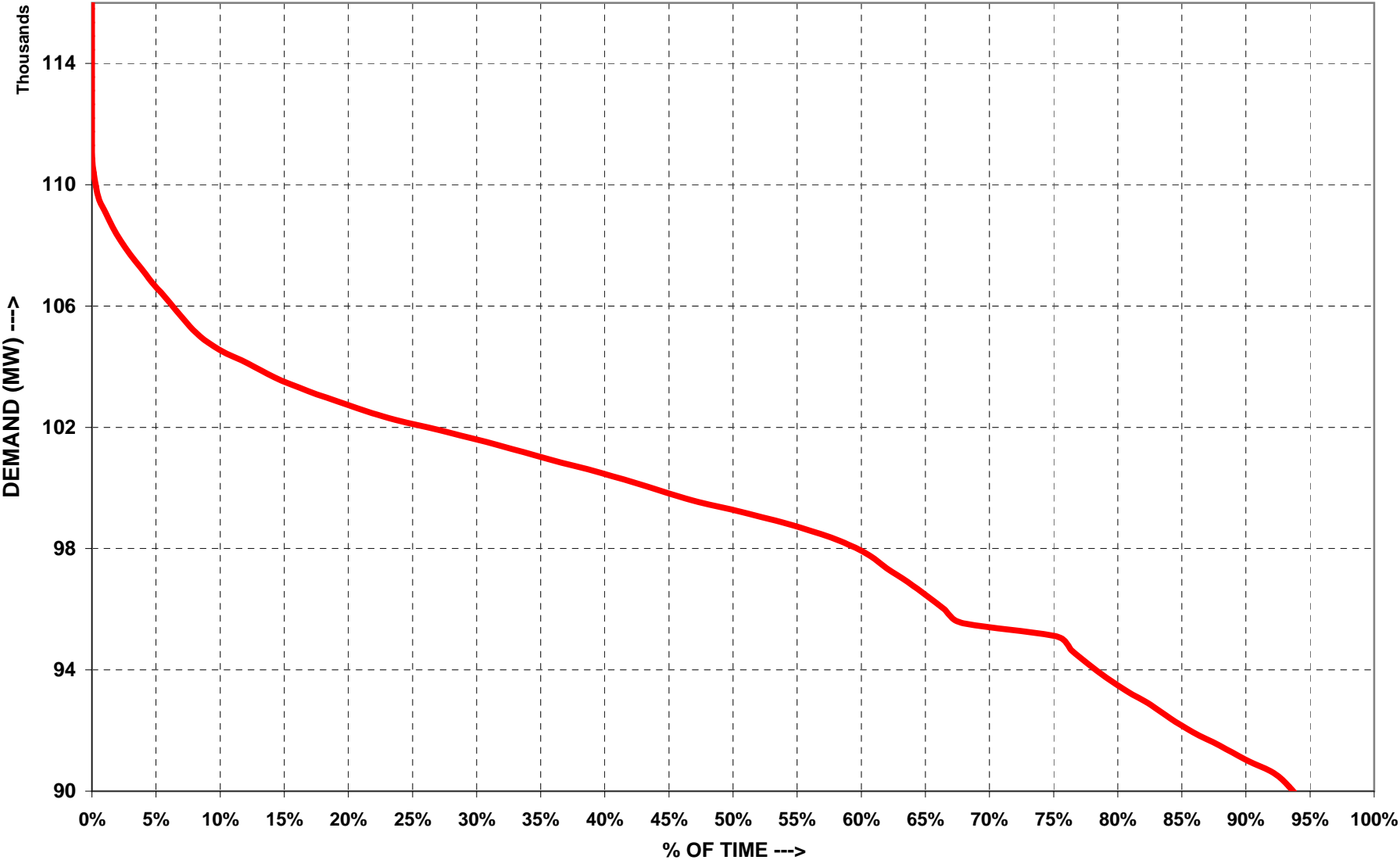
All figures in MW

Date	NR	WR	SR	ER	NER	TOTAL
12/1/2012	31994	36375	25458	13086	1636	108549
12/2/2012	30729	35398	24416	12427	1674	104644
12/3/2012	31350	36774	25057	12573	1671	107425
12/4/2012	31778	36991	24836	13346	1669	108620
12/5/2012	32263	37279	26230	12852	1699	110323
12/6/2012	31987	37797	25992	12243	1706	109725
12/7/2012	33062	37456	26566	12512	1733	111329
12/8/2012	32557	38428	26240	13037	1687	111949
12/9/2012	30916	37055	25205	12734	1682	107592
12/10/2012	32167	38829	27259	13338	1672	113265
12/11/2012	32311	38407	27513	13370	1689	113290
12/12/2012	32036	37392	27097	12366	1685	110576
12/13/2012	31159	36785	27304	13497	1726	110471
12/14/2012	32277	36794	27235	13441	1675	111422
12/15/2012	33723	36964	27158	13351	1678	112874
12/16/2012	31875	36387	25040	12634	1701	107637
12/17/2012	32492	37032	28006	13237	1717	112484
12/18/2012	32889	38594	28202	13177	1663	114525
12/19/2012	32860	38615	27087	13253	1733	113548
12/20/2012	33607	37439	27647	13465	1787	113945
12/21/2012	33047	37138	27048	13100	1750	112083
12/22/2012	32733	38489	27461	13223	1676	113582
12/23/2012	32833	36096	27288	12448	1700	110365
12/24/2012	33419	37615	27854	12909	1718	113515
12/25/2012	33923	37608	27694	12748	1695	113668
12/26/2012	34071	37094	27607	12652	1776	113200
12/27/2012	33642	37015	27580	13021	1765	113023
12/28/2012	34696	36851	27477	13588	1719	114331
12/29/2012	34091	36643	27299	12893	1784	112710
12/30/2012	33654	36530	26618	12989	1790	111581
12/31/2012	34744	37439	28590	13621	1845	116239
MAXIMUM	34744	38829	28590	13621	1845	116239
MINIMUM	30729	35398	24416	12243	1636	104644
AVERAGE	32738	37268	26841	13004	1713	111564
All Time Max.	38263	40699	31714	14976	1845	119089
Date	15.06.12	20.10.12	30.08.12	01.10.12	31.12.12	30.05.12

PEAK DEMANDS MET DURING THE MONTH OF DECEMBER' 2012



ALL INDIA LOAD DURATION CURVE FOR DECEMBER' 2012

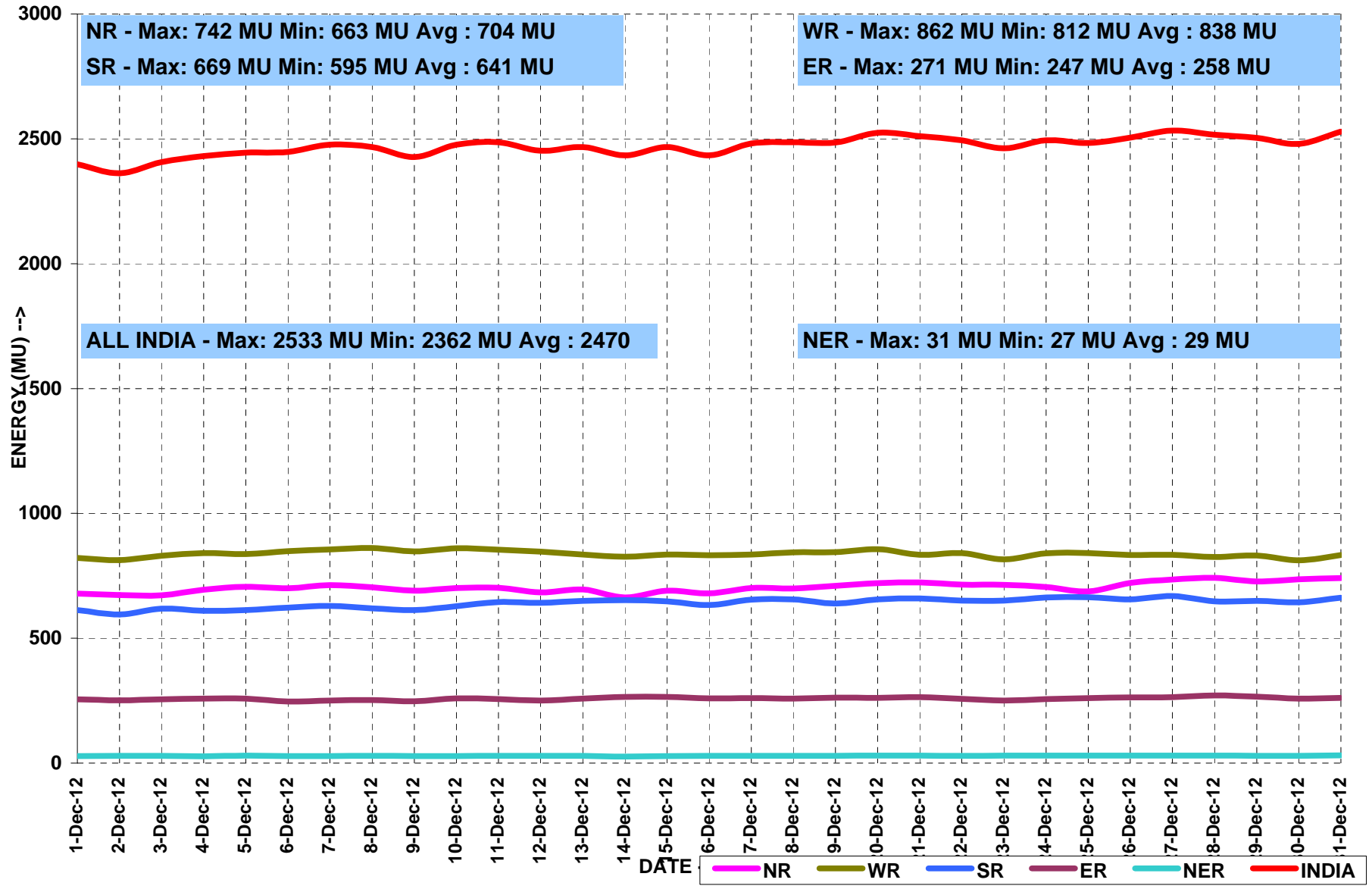


ENERGY MET AT NATIONAL LEVEL
MONTH:- DECEMBER 2012

All figures in MU

Date	NR	WR	SR	ER	NER	TOTAL
12/1/2012	679	822	613	256	28	2398
12/2/2012	673	813	595	252	29	2362
12/3/2012	672	830	619	256	29	2407
12/4/2012	694	841	610	258	28	2431
12/5/2012	706	837	613	258	30	2445
12/6/2012	700	849	623	247	29	2448
12/7/2012	713	855	629	251	28	2476
12/8/2012	704	862	620	253	29	2467
12/9/2012	690	848	612	248	28	2427
12/10/2012	701	861	628	259	28	2477
12/11/2012	702	854	645	256	29	2486
12/12/2012	684	847	642	251	29	2453
12/13/2012	695	835	650	258	29	2467
12/14/2012	663	826	653	265	27	2434
12/15/2012	691	835	648	265	28	2467
12/16/2012	680	832	633	260	29	2434
12/17/2012	702	835	655	260	29	2481
12/18/2012	699	844	656	258	29	2486
12/19/2012	710	845	639	263	29	2485
12/20/2012	721	856	656	261	30	2525
12/21/2012	723	834	659	264	30	2511
12/22/2012	715	842	651	257	30	2494
12/23/2012	714	816	651	251	30	2462
12/24/2012	705	840	663	256	30	2494
12/25/2012	688	841	664	260	30	2483
12/26/2012	721	834	656	263	30	2505
12/27/2012	735	834	669	264	30	2533
12/28/2012	742	825	648	271	30	2516
12/29/2012	727	831	650	266	29	2503
12/30/2012	736	812	644	258	30	2479
12/31/2012	742	833	662	261	31	2529
TOTAL	21829	25968	19856	8005	903	76562
MAXIMUM	742	862	669	271	31	2533
MINIMUM	663	812	595	247	27	2362
AVERAGE	704	838	641	258	29	2470
All Time Max.	937	884	720	321	34	2761
Date	23.06.12	22.10.12	30.05.12	30.09.12	05.09.12	30.05.12

ENERGY MET DURING THE MONTH OF DECEMBER' 2012

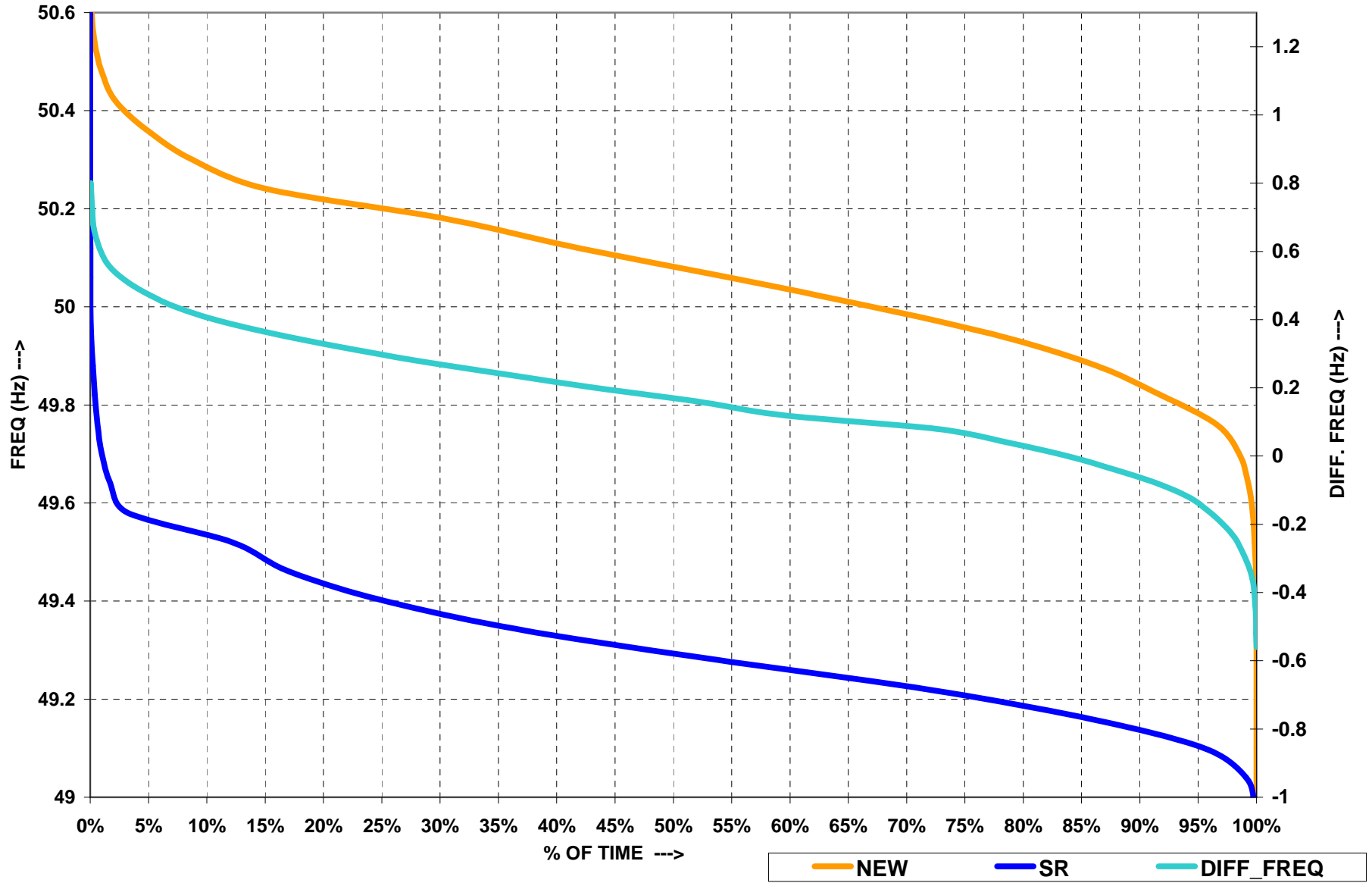


FREQUENCY PROFILE FOR THE MONTH OF DECEMBER 2012

SR GRID									
FREQUENCY PROFILE		< 48.5	48.5 - 49.5	< 49.5	49.5 - 50.2	>50.2	Max. Freq	Min. Freq	Avg. Freq
% TIME	Apr-12	0.00	7.79	7.79	91.28	0.93	50.66	48.66	49.69
	May-12	0.00	5.61	5.61	94.01	0.38	50.63	48.81	49.7
	Jun-12	0.00	7.83	7.83	91.03	1.14	50.79	48.86	49.68
	Jul-12	0.00	0.00	6.95	92.18	0.87	50.61	48.81	49.69
	Aug-12	0.00	3.17	3.17	95.57	1.26	50.55	48.86	49.75
	Sep-12 (till 16 sep)	0.00	1.68	1.68	95.88	2.44	50.58	49.12	49.81
FREQUENCY PROFILE		<49.0	49.0-49.7	<49.7	49.7-50.2	>50.2	Max. Freq	Min. Freq	Avg. Freq
% TIME	Sep-12 (17 Sep onwards)	0.00	0.00	18.37	81.43	0.2	50.51	49.12	49.79
	Oct-12	0.00	8.26	8.26	89.38	2.36	50.73	49.19	49.86
	Nov-12	0.00	0.00	4.16	91.85	3.99	50.69	49.15	49.91
	Dec-12	0.00	3.68	3.68	93.4	2.92	50.87	49.28	49.9

NEW GRID									
FREQUENCY PROFILE		< 48.5	48.5 - 49.5	< 49.5	49.5 - 50.2	>50.2	Max. Freq	Min. Freq	Avg. Freq
% TIME	Apr-12	0.00	2.38	2.38	93.68	3.94	50.66	49.08	49.9
	May-12	0.00	10.82	10.82	87.82	1.36	50.75	48.82	49.8
	Jun-12	0.00	19.95	19.95	78.66	1.39	50.68	48.75	49.7
	Jul-12	0.00	24.38	24.38	73.59	2.03	51.21	49.79	49.68
	Aug-12	0.00	1.57	1.57	89.72	8.71	50.65	48.82	49.95
	Sep-12 (till 16 sep)	0.00	0.60	0.60	83.73	15.67	50.65	48.96	50.02
FREQUENCY PROFILE		<49.0	49.0-49.7	<49.7	49.7-50.2	>50.2	Max. Freq	Min. Freq	Avg. Freq
% TIME	Sep-12 (17 Sep onwards)	0.00	3.22	3.22	84.09	12.69	50.65	48.96	50.03
	Oct-12	0.00	3.33	3.33	90.39	6.28	50.61	49.37	49.98
	Nov-12	0.00	0.05	1.79	85.83	12.38	50.63	49.33	50.02
	Dec-12	0.00	4.39	4.39	84.1	11.51	50.63	49.25	50

FREQUENCY DURATION CURVES FOR DECEMBER' 2012



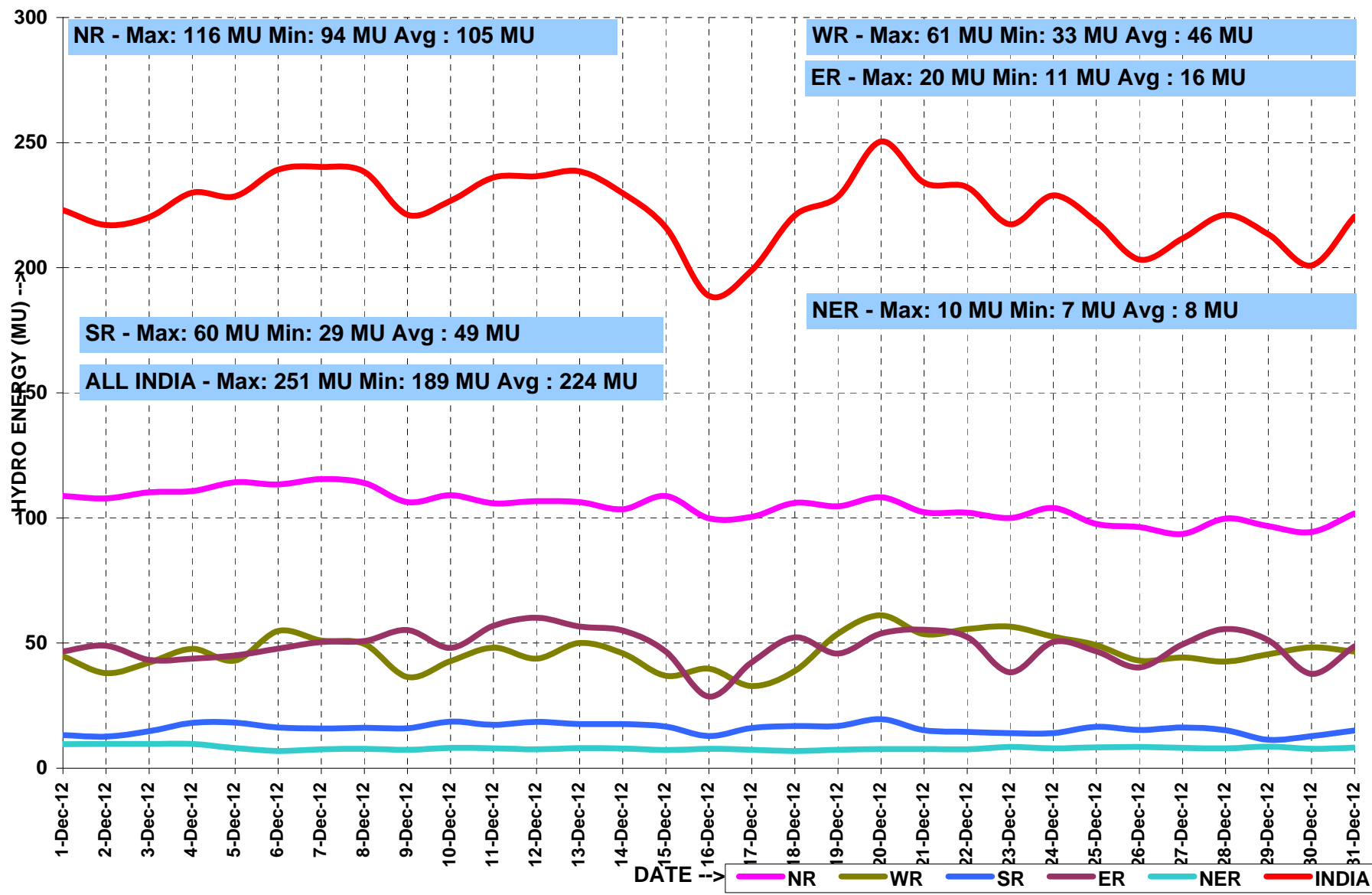
HYDRO GENERATION AT NATIONAL LEVEL

MONTH:- DECEMBER 2012

All figures in MU

Date	NR	WR	SR	ER	NER	TOTAL
12/1/2012	109	45	47	13	10	223
12/2/2012	108	38	49	13	10	217
12/3/2012	110	42	43	15	10	220
12/4/2012	111	48	44	18	10	230
12/5/2012	114	43	45	18	8	229
12/6/2012	113	55	48	16	7	239
12/7/2012	116	51	50	16	8	240
12/8/2012	114	50	51	16	8	238
12/9/2012	106	36	55	16	7	221
12/10/2012	109	43	48	19	8	227
12/11/2012	106	48	57	17	8	236
12/12/2012	107	44	60	19	8	237
12/13/2012	106	50	57	18	8	239
12/14/2012	104	46	55	18	8	230
12/15/2012	109	37	47	17	7	216
12/16/2012	100	40	29	13	8	189
12/17/2012	101	33	42	16	7	199
12/18/2012	106	39	52	17	7	221
12/19/2012	105	54	46	17	7	228
12/20/2012	108	61	54	20	8	251
12/21/2012	102	54	55	15	8	234
12/22/2012	102	56	52	15	8	232
12/23/2012	100	57	38	14	9	217
12/24/2012	104	53	50	14	8	229
12/25/2012	98	49	47	17	8	218
12/26/2012	96	43	40	15	9	203
12/27/2012	94	44	49	16	8	212
12/28/2012	100	43	56	15	8	221
12/29/2012	97	46	51	11	9	213
12/30/2012	94	48	38	13	8	201
12/31/2012	102	47	49	15	8	221
TOTAL	3249	1439	1504	490	248	6931
MAXIMUM	116	61	60	20	10	251
MINIMUM	94	33	29	11	7	189
AVERAGE	105	46	49	16	8	224

HYDRO ENERGY DURING THE MONTH OF DECEMBER' 2012



WIND GENERATION AT NATIONAL LEVEL

MONTH:- DECEMBER 2012

All figures in MU

Date	NR	WR	SR	ER	NER	TOTAL
12/1/2012	7.8	22.0	4.7	34.5
12/2/2012	5.3	15.5	8.5	29.3
12/3/2012	12.3	21.0	14.5	47.8
12/4/2012	10.5	23.0	14.8	48.3
12/5/2012	2.8	26.7	29.7	59.2
12/6/2012	1.6	21.4	27.7	50.7
12/7/2012	0.9	19.2	22.1	42.2
12/8/2012	0.1	6.7	13.7	20.5
12/9/2012	0.5	7.8	8.2	16.5
12/10/2012	2.2	9.0	13.2	24.4
12/11/2012	2.4	8.1	12.6	23.1
12/12/2012	1.7	4.9	7.0	13.6
12/13/2012	11.7	8.4	7.6	27.7
12/14/2012	6.3	6.4	19.2	31.9
12/15/2012	9.0	15.5	29.7	54.2
12/16/2012	10.3	26.0	48.6	84.9
12/17/2012	15.8	28.4	57.0	101.2
12/18/2012	3.7	24.0	55.4	83.1
12/19/2012	3.5	28.9	37.0	69.4
12/20/2012	0.9	20.8	36.6	58.3
12/21/2012	1.5	16.8	29.6	47.9
12/22/2012	1.7	21.8	25.4	48.9
12/23/2012	1.6	17.9	30.7	50.2
12/24/2012	2.7	15.9	21.2	39.8
12/25/2012	3.5	20.3	19.3	43.1
12/26/2012	1.7	14.0	20.2	35.9
12/27/2012	5.5	8.3	20.4	34.2
12/28/2012	12.2	7.6	10.6	30.4
12/29/2012	8.5	16.6	14.3	39.4
12/30/2012	10.2	30.0	11.8	52.0
12/31/2012	4.8	24.3	11.3	40.4
TOTAL	163	537	683	1383
MAXIMUM	16	30	57	101
MINIMUM	0	5	5	14
AVERAGE	5	17	22	45

ACTUAL POWER SUPPLY POSITION - DECEMBER 2012

REGION	STATE	Requirement/Availability in MU/DAY			Requirement/Availability in MU				Peak Demand/Peak Met in MW			
		Requirement	Energy met	Surplus(+)/ Deficit(-)	Requirement	Energy met	Surplus(+)/ Deficit(-)	% Shortage	Requirement	Peak Demand	Surplus(+)/ Deficit(-)	% Shortage
NR	Chandigarh	4	4	0	109	109	0	0	232	232	0	0
	Delhi	58	58	0	1785	1787	1	0	3666	3643	-23	-1
	Haryana	97	102	5	3015	3171	156	-5	5645	5645	0	0
	H.P.	24	24	0	731	737	7	-1	1360	1360	0	0
	J&K	36	48	12	1112	1482	370	-33	2422	1817	-605	-25
	Punjab	91	95	5	2809	2956	147	-5	5336	5336	0	0
	Rajasthan	166	168	1	5155	5197	42	-1	8511	8255	-256	-3
	U.P.	200	241	42	6187	7482	1295	-21	12354	9613	-2741	-22
	Uttarakhand	30	31	1	917	958	40	-4	1742	1487	-255	-15
	NFF/Railway	2	2	0	66	66	0	0	102	102	0	0
	TOTAL	706	772	67	21881	23945	2064	-9	37830	34743	-3087	-8
WR	Gujarat	243	242	0	7528	7517	-11	0	11375	11295	-80	-1
	Madhya Pradesh	192	167	-25	5966	5187	-779	-13	10137	8845	-1292	-13
	Chhattisgarh	58	57	-1	1793	1764	-29	-2	2979	2764	-215	-7
	Maharashtra	352	340	-11	10904	10550	-354	-3	17707	16985	-722	-4
	Goa	6	6	0	197	194	-3	-2	365	293	-72	-20
	D&D	6	6	-1	191	171	-20	-10	245	205	-40	-16
	DNH	13	13	0	413	412	-1	0	586	318	-268	-46
	TOTAL	877	838	-39	27192	25969	-1223	-4	41131	38902	-2229	-5
SR	AP-TRANSCO	263	221	-41	8150	6865	-1285	-16	11968	10551	-1417	-12
	KPTCL	179	160	-19	5555	4959	-596	-11	9040	7959	-1081	-12
	KSEB	57	54	-3	1755	1673	-82	-5	3012	3004	-8	0
	TNEB	260	200	-60	8047	6187	-1860	-23	13370	9625	-3745	-28
	PONDY	6	6	0	174	172	-2	-1	301	299	-2	-1
		TOTAL	764	641	-123	23682	19856	-3826	-16	36902	29736	-7166
ER	Bihar	40	36	-40	1230	1102	-128	-10	2250	1619	-631	-28
	JSEB	22	18	-3	670	566	-104	-16	1200	1031	-169	-14
	GRIDCO	51	51	0	1590	1596	6	0	2570	2432	-138	-5
	DVC	71	59	-12	2190	1826	-364	-17	3625	3325	-300	-8
	West Bengal	95	101	6	2949	3120	171	6	5862	6044	182	3
	TOTAL	278	265	-14	8629	8210	-419	-5	15162	13766	-1396	-9
NER	Arunachal Pradesh	2	2	0	50	47	-3	-6.0	110	109	-1	-1
	Assam	18	17	-1	552	527	-25	-4.6	1147	1148	1	0
	Manipur	2	2	0	53	50	-2	-4.6	122	120	-2	-2
	MeSEB	5	5	0	160	152	-8	-5.1	306	301	-5	-2
	Mizoram	1	1	0	36	34	-2	-5.8	75	73	-2	-3
	Nagaland	2	1	0	47	45	-2	-4.3	109	105	-4	-4
	Tripura	3	3	0	97	92	-5	-5.2	213	205	-8	-4
	TOTAL	32	31	-2	994	946	-48	-4.8	2083	2061	-22	-1

SCHEDULE AND DRAWAL OF CONSTITUENTS - DECEMBER 2012

REGION	STATE	SCHEDULE (MU)	ACTUAL DRAWAL (MU)	Over drawal(+)/ Under Drawal(-) (MU)	SCHEDULE (MU/DAY)	ACTUAL DRAWAL (MU/DAY)	Over drawal(+)/ Under Drawal(-) (MU/DAY)
NR	Chandigarh	108	116	7	3	4	0
	Delhi	1034	942	-91	33	30	-3
	Haryana	1132	1078	-54	37	35	-2
	H.P.	568	588	20	18	19	1
	J&K	884	944	60	29	30	2
	Punjab	1015	1018	4	33	33	0
	Rajasthan	2084	2090	6	67	67	0
	U.P.	2166	2088	-78	70	67	-3
	Uttarakhand	598	658	60	19	21	2
	NFF/Railway	75	66	-9	2	2	0
WR	Gujarat	1256	1193	-64	41	38	-2
	Madhya Pradesh	3030	3085	55	98	100	2
	Maharashtra	3464	3478	14	112	112	0
	Chhattisgarh	426	456	30	14	15	1
	Goa	210	179	-30	7	6	-1
	D&D	177	171	-6	6	6	0
	D&NH	421	413	-8	14	14	0
SR	APTRANSCO	2216	2307	91	71	74	3
	KPTCL	785	816	31	25	26	1
	KSEB	960	1040	80	31	34	3
	TNEB	2011	2065	54	65	67	2
	PONDY	217	172	-45	7	6	-1
	GOA(SR)	67	60	-7	2	2	0
ER	Bihar	1092	1070	-22	35	35	-1
	JSEB	260	242	-19	8	8	-1
	DVC	-796	-805	-9	-26	-26	0
	GRIDCO	524	516	-8	17	17	0
	Sikkim	195	199	4	6	6	0
	WBSEB	41	35	-6	1	1	0
NER	Arunachal Pradesh	40	51	11	1	2	0
	Assam	331	319	-11	11	10	0
	Manipur	45	51	7	1	2	0
	MeSEB	98	101	3	3	3	0
	Mizoram	29	33	4	1	1	0
	Nagaland	37	44	7	1	1	0
	Tripura	8	10	2	0	0	0

Inter-Regional Exchanges (2012-2013)

All figs. in MUs

Provisional data - subject to change

		Apr-12	May-12	Jun-12	Jul-12	Aug-12	Sep-12	Oct-12	Nov-12	Dec-12	Jan-13	Feb-13	Mar-13	Total FINANCIAL YEAR 2012-13 (Till June'12)
*	WR-NR	HVDC Vindhyachal B/B	22.31	146.15	203.64	198.81	212.96	102.09	131.08	7.61	9.14			1033.79
		HVDC Mundra-M'garh#				221.62	328.28	373.97	491.33	482.80	390.55			2288.55
		220KV Aur.-Mal.	0.33	0.00	1.51	9.17	0.00	1.18	0.00	0.00	0.00			12.18
		220KV Kota/Morak-Badod	6.94	40.25	11.71	42.95	16.11	22.89	6.25	2.73	0.50			150.33
		400KV Agra-Gwalior D/C	460.85	610.16	697.97	712.15	378.55	362.60	311.59	145.61	190.59			3870.08
		400KV Kankroli-Zerda	4.20	20.06	72.81	66.97	0.99	10.67	4.49	0.00	6.29			186.48
		400KV Bhinmal-Zerda	3.30	40.92	72.65	94.51	4.58	29.07	31.31	3.82	37.43			317.59
*	ER-NR	400KV Barh - Balia D/C \$	114.24	214.97	175.75	122.11	46.34	61.71	282.67	103.19	0.00			1120.98
		HVDC Sasaram B/B (Bypass wef 1 DEC'08)	22.34	63.33	58.57	180.46	101.20	127.47	33.20	102.62	33.03			722.22
		765 kV Gaya - Fatehpur					82.99	66.01	101.65	109.05	137.99			497.69
		400KV Mzp-Gkp D/C	309.11	484.33	447.30	670.69	499.81	481.15	536.30	282.99	341.08			4052.75
		220/132kV	105.31	98.91	105.40	98.24	101.12	109.94	106.68	99.39	97.31			922.28
		400KV Patna-Balia 2xD/C \$	224.55	320.90	299.47	370.14	256.53	253.89	209.32	231.84	512.62			2679.26
		400kV Pusauli- Balia	0.00	0.00	7.54	13.48	6.48	9.36	30.89	1.43	8.64			77.82
		400KV Biharshariff-Balia D/C	208.57	293.31	274.10	330.85	231.34	198.45	241.50	184.24	200.47			2162.84
*	NR-WR	HVDC Vindhyachal B/B	70.00	17.02	16.83	19.77	6.86	26.18	55.01	194.44	220.48			626.60
		220KV Aur.-Mal.	30.53	32.46	17.41	10.57	35.00	36.63	69.13	100.33	103.01			435.07
		220KV Kota/Morak-Badod	7.12	0.67	0.80	0.00	14.83	4.28	37.09	77.33	57.75			199.87
		400KV Agra-Gwalior D/C	0.00	0.00	0.00	0.00	0.00	0.00	0.00	0.68	0.99			1.67
		400KV Kankroli-Zerda	86.94	14.45	11.31	5.92	46.44	28.02	48.47	88.70	38.07			368.32
		400KV Bhinmal-Zerda	68.76	8.67	12.42	8.51	42.83	7.75	8.28	25.52	4.41			187.15
*	NR-ER	400KV Barh - Balia D/C	0.00	0.00	0.00	0.00	0.00	0.00	0.00	0.00	0.00			0.00
		220/132kV	27.60	26.92	26.92	28.05	28.32	22.51	31.50	30.12	25.62			247.57
		400KV Mzp-Gkp D/C	0.00	0.00	0.00	0.00	0.00	0.00	0.00	0.00	0.00			0.00
		765 kV Gaya - Fatehpur					0.00	0.00	0.40	0.40	0.00			0.80
		HVDC Sasaram B/B (Bypass wef 1 DEC'08)	64.08	22.02	39.74	6.49	14.58	17.91	63.94	6.30	33.72			268.78
		400KV Patna-Balia D/C	0.00	0.00	0.00	0.00	0.00	0.00	0.00	0.00	0.00			0.00
		400kV Pusauli- Balia				3.69	9.95	21.23	1.66	26.16	8.51			71.19
		400KV Biharshariff-Balia D/C	0.00	0.00	0.00	0.00	0.00	0.00	0.00	0.00	0.00			0.00
*	NR-Nepal		19.17	11.91	11.91	13.25	10.28	3.52	0.85	11.79	15.90			98.58
**	ER-SR	HVDC-Gaz.	157.65	108.00	195.80	349.42	215.55	239.21	296.76	348.46	368.72			2279.57
		HVDC-Tal.	1571.43	1605.35	1427.68	1289.96	1070.88	945.53	1368.47	1287.79	1356.60			11923.69
**	SR-ER	HVDC-Gaz.	1.64	1.16	2.83	0.42	3.51	0.00	0.00	0.00	0.00			9.56
***	ER-WR	AC links	188.97	240.24	149.77	61.17	93.46	99.07	303.91	258.07	553.00			1947.66
***	WR-ER	AC links	422.66	460.91	649.57	717.30	434.47	285.63	30.62	18.52	-2.00			3017.68
***	ER-NER	AC links	246.32	231.89	124.78	86.43	105.44	90.27	70.50	215.87	266.00			1437.49
***	NER-ER	AC links	0.05	0.07	18.31	23.02	14.05	27.16	23.32	1.28	-3.00			104.27
**	SR-WR	Chandrapur HVDC	0.00	0.00	0.00	0.00	0.00	0.00	0.00	0.00	0.00			0.00
**	WR-SR	Chandrapur HVDC	564.51	542.48	566.08	654.82	676.44	634.54	685.19	645.61	606.10			5575.77
		TOTAL	5009	5657	5701	6411	5090	4700	5613	5095	5620	0	0	48896
	ER-SR	Tal.-Kol. Interconnector	225.40	246.9	348.7	358.9	257.8	258.1	66.8	143.2	99.4			2005.03
		Net IR (Excl. Tal.-II)	3213	3805	3924	4762	3761	3496	4178	3664	4164	0	0	34967

** Data is taken from SRLDC

*** Data is taken from ERLDC # dedicated transmission line of M/s Adani Power Ltd. and not part of ISTS, \$ Barh-Balia D/C converted to Patna -Balia III & IV on 30.11.12

STOA (BILATERAL AND COLLECTIVE) & UI BILLING DETAILS- DECEMBER' 2012

BILATERAL SHORT TERM OPEN ACCESS

Description	Name of RLDC	No. of Transactions	Energy Approved(MU)
DEC'12	NR	272	1480
	WR	428	1417
	SR	146	837
	ER	200	495
	NER	27	90
TOTAL		1073	4318

SHORT TERM OPEN ACCESS

MONTH	Collective STOA		Bilateral STOA	
	NO. of Buyers/Sellers	Approved Energy (MU)	NO. of Buyers/Sellers	Approved Energy (MU)
APR'12	1676	1337	589	3460
MAY'12	1535	1478	724	3479
JUN'12	1650	1629	797	4155
JULY'12	1938	1572	826	5321
AUG'12	1876	1860	1103	5425
SEP'12	1725	1910	857	4635
OCT'12	2017	2301	918	3315
NOV'12	1988	2186	966	3944
DEC'12	1992	2315	1073	4318
TOTAL	16397	16588	7853	38052

MONTHLY UI BILLING DETAILS

provisional data subject to change

(RS. IN CRORES)

REGION	NORTH	WEST	EAST	SOUTH	NORTH EAST
(Upto 29th APR'12)	342	249	161	88	14
(Upto 27th MAY'12)	937	630	363	154	29
(Upto 01st JULY'12)	1,904	1,109	807	238	61
(Upto 29th JULY'12)	3,003	1,673	1,342	315	96
(Upto 26th AUG'12)	3,119	1,778	1,417	364	110
(upto 30th SEP'12)	3,220	1,850	1,485	425	121
(upto 28th OCT'12)	3,323	1,925	1,529	460	132
(upto 25th NOV'12)	3,402	1,979	1,575	504	140
(Upto 30th DEC'12)	3,515	2,082	1,620	563	150

POWER MARKET INFORMATION

EXCHANGES THROUGH POWER EXCHANGES (IEX & PXI) - DEC' 2012

S. No.	Regional Entity	Region	Through Power Exchange in MU	
			Sale	Purchase
1	Punjab	NR	1.73	147.75
2	Haryana	NR	0.23	146.27
3	Rajasthan	NR	21.43	562.67
4	Delhi	NR	408.91	2.25
5	Uttar Pradesh	NR	17.79	41.42
6	Uttarakhand	NR	12.70	11.62
7	Himachal Pradesh	NR	24.96	0.19
8	J & K	NR	5.36	0.00
9	UT Chandigarh	NR	2.50	0.53
10	AD Hydro	NR	0.00	0.00
11	KW	NR	12.00	0.00
12	Shree Cement	NR	42.23	0.00
13	Nathpa Jhakri	NR	0.00	0.00
14	Baira Siul HEP(BS0)	NR	1.02	0.00
15	Chamera-I HEP(CM1)	NR	5.71	0.00
16	Chamera-II HEP(CM2)	NR	5.22	0.00
17	Dhauliganga HEP(DG0)	NR	4.66	0.00
18	Dulahasti HEP(DU0)	NR	11.10	0.00
19	Salal HEP(SL0)	NR	8.69	0.00
20	Sewa-II NHPC(SW2)	NR	1.29	0.00
21	Tanakpur HEP(TP0)	NR	2.01	0.00
22	Uri HEP(UR0)	NR	7.85	0.00
23	LANCO Budhil	NR	0.37	0.00
24	chamera 3	NR	1.68	0.00
25	ADANI HVDC(N0RGU0)	NR	8.68	0.00
26	MP	WR	36.85	92.83
27	Maharashtra	WR	69.10	129.26
28	Gujarat	WR	334.09	475.44
29	Chattisgarh	WR	34.79	13.38
30	Goa	WR	0.00	0.00
31	Daman and Diu	WR	0.00	0.00
32	Dadra & Nagar Haveli	WR	0.00	0.00
33	JD	WR	304.86	0.00
34	LANCO AMK	WR	11.71	0.00
35	ACB India Limited	WR	6.84	0.00
36	Jindal Steel and Power Ltd	WR	57.83	0.00
37	Balco-II	WR	0.90	0.00
38	Sterlite(w3rse0)	WR	63.00	0.00
39	EMCO	WR	0.00	1.58
40	VANDANA VIDYUT	WR	0.00	0.00
41	Andhra Pradesh	SR	90.33	251.79
42	Karnataka	SR	509.49	4.77
43	Kerala	SR	0.00	104.05
44	Tamilnadu	SR	0.00	267.79
45	Pondicherry	SR	0.00	0.00
46	Goa	SR	0.00	0.00
47	LANCO_KONDPLY	SR	0.00	0.00
48	SIMHAPURI	SR	7.90	0.00
49	MINAXI	SR	0.00	0.00
50	West Bengal	ER	103.82	13.89
51	Orissa	ER	19.53	0.00
52	Bihar	ER	0.00	0.00
53	Jharkhand	ER	0.00	1.61
54	Sikkim	ER	13.10	0.00
55	DVC	ER	9.45	0.00
56	STERLITE	ER	0.00	0.00
57	Maithon Power Ltd	ER	11.38	0.00
58	Arunachal Pradesh	NER	0.00	11.13
59	Assam	NER	0.00	21.55
60	Manipur	NER	0.00	0.00
61	Meghalaya	NER	1.13	6.04
62	Mizoram	NER	0.24	0.00
63	Nagaland	NER	0.00	6.73
64	Tripura	NER	0.34	0.06
65	Agartala GTPP_AG0	NER	5	0.00
66	KOPILI_KP1	NER	0	0.00
67	Assam GBPP_KT0	NER	8	0.00
68	LOKTAK	NER	6	0.00
	Total		2315	2315

RENEWABLE ENERGY CERTIFICATE MECHANISM
MONTH:- DECEMBER 2012

RE Source & Unit wise break up (Dec,12)					
Sr.No	Source Wise	Accreditation		Registration	
		Capacity(MW)	Unit	Capacity(MW)	Unit
1	Wind	26.32	10	1.65	2
2	Urban or Municipal Waste	0	0	0	0
3	Solar PV	1.5	2	0	0
4	Small Hydro	22.8	2	0	0
5	Others	0	0	0	0
6	Biomass	0	0	8.2	2
7	Bio-fuel cogeneration	0	0	0	0
	Total	50.62	14	9.85	4

RECs Issued (Dec,12)			
Sr.No.	Non Solar	Solar	Total
1	382391	992	383383

Redemption of REC (Dec,12)			
Sr.No.	Non Solar	Solar	Total
1	273644	1208	274852

RE Source & Unit wise break up (Apr,12 - Dec,12)					
Sr.No	Source Wise	Accreditation		Registration	
		Capacity(MW)	Unit	Capacity(MW)	Unit
1	Wind	814.95	217	812.9	230
2	Urban or Municipal Waste	16	2	0	0
3	Solar PV	4.36	7	18.16	7
4	Small Hydro	30	4	10.7	3
5	Others	0	0	0	0
6	Biomass	81.43	11	135.6	18
7	Bio-fuel cogeneration	177.64	21	140.47	21
	Total	1124.38	262	1117.83	279

RECs Issued (Apr,12 - Dec,12)			
Sr.No.	Non Solar	Solar	Total
1	3431542	6541	3438083

Redemption of REC (Apr,12 - Dec,12)			
Sr.No.	Non Solar	Solar	Total
1	1801641	6288	1807929

IMPORTANT EVENTS / DISTURBANCES - DECEMBER 2012

S.No.	Outage		Region	Area Affected in Region	Brief Particulars	Generation/Load Loss	Category as per CEA Grid Standards
	Date	Time					
1	14-Dec-12	1040 hours	NER	Assam, Arunachal Pradesh, Meghalaya, Mizoram, Nagaland, Manipur & Tripura	220 kV Balipara-Samaguri tripped from Samaguri end, simultaneously 315 MVA ICT#I at Misa tripped. Due to tripping of these elements NER Grid comprising parts of Assam, Arunachal Pradesh, Meghalaya, Mizoram, Nagaland, Manipur & Tripura separated from NEW Grid & collapsed on load generation mismatch	Gen. Loss=553 MW Load Loss=1023 MW	GD-V
2	14-Dec-12	2245 hours	NER	Some parts of Meghalaya	Barnihat ICT, 2*160 MVA, 220/132 kV & 220 kV Misa-Kilin line tripped due to which some part of Meghalaya got isolated due to Gen. & Load mismatch	Gen. Loss=78 MW Load Loss=170 MW	GD-II
3	16-Dec-12	0521 hrs	NR	Part of Delhi	Due to CT blast 220 kV Pragati(Gas)-Maharanibag, all lines emanating from Pragati tripped and Pragati generation of 400 MW tripped	Generation Loss = 400 MW & Load Loss=50 MW	GD-I
4	22-Dec-12	1907 hours	NER	Part of NER at Ranganadi.	Due to problem in ICT of Ranganadi 400/132 kV there was loss of generation	Gen. Loss=200 MW	GD-III
5	23-Dec-12	0153 hours	NR	Parts of Uttar-Pradesh around Lucknow, Kanpur, Fatehpur, Singrauli & Unnao	Due to Bus fault at Panki & Unnao following grid elements tripped : 400 kV Lucknow-Unnao-II Kanpur-Panki D/C Muradnagar-Panki S/C Panki-Unnao S/C Bareilly-Unnao-I Panki-Obra-S/C Fatehpur-Kanpur-I Fatehpur-Singrauli S/C Unnao, 1000MVA & 315 MVA I	No Generation Loss & No Load Loss	
6	29-Dec-12	1159 hours	NER	Assam, Arunachal Pradesh, Meghalaya, Mizoram, Nagaland, Manipur & Tripura	Balipara-Bongaigaon I & II tripped due to which NER grid separated from NEW grid & collapsed due to load Generation mismatch (except part of upper Assam with LTPS, NTPS Generation)	Load Loss=954 MW Gen. Loss=603 MW	GD-V

IMPORTANT ELEMENTS COMMISSIONED DURING DECEMBER 2012

SL. NO	ELEMENT	VOLTAGE (KV)	DATE OF CHARGING
1	In ER-NR, 400 kV Patna-Balia-IV synchronised for 1 st time.	400	1544Hrs on 03.12.2012
2	400 kV Wardha – Mauda LILO at IEPL Wardha – IEPL (1422 Hrs) IEPL – Mauda (1717 Hrs)	400	16.12.2012
3	In WR at Raipur S/s of POWERGRID Line Reactor of 63 MVar in 400 kV Raipur –Wardha – I was taken in service for the first time	400	1555 Hrs on 21.12.2012
4	In WR Bus Reactor of 3x80 MVar Capacity at Satna S/s of POWERGRID was taken in service for the first time	765	1806 Hrs on 21.12.2012
5	In WR at Raipur S/s of POWERGRID Line Reactor of 63 MVar in 400 kV Raipur –Wardha – II was taken in service for the first time	400	1623 Hrs on 21.12.2012
6	In WR Bus Reactor of 3x80 MVar Capacity at Bina S/s of POWERGRID was taken in service for the first time	765	1341 Hrs on 24.12.2012
7	In WR, at Essar(Mahan), 600 MW synchronised for 1 st time.	400	1657Hrs on 24.12.2012
8	In WR , at CGPL(Mundra) , unit 40 of 830 MW synchronized for the first time	400	1331 hrs on 28.12.2012
9	In WR Vindhyachal – Sasan – I charged for the first time	400	1550 Hrs on 30.12.2012
10	In WR Vindhyachal – Sasan – II charged for the first time	400	1632 Hrs on 30.12.2012
11	In WR at Sasan S/s of POWERGRID 765/400 ICT of 1000 MVA Capacity was taken in service for the first time	765/400	1735 Hrs on 30.12.2012
12	In ER, at Siliguri S/S, 220/132 kV, 160MVA,ICT # II was idle charged for 1 st time.	220	1853 Hrs on 30.12.2012
13	In WR,400 kV Raipur-Wardha-I with 40% FSC & Line Reactor of 63 MVar at wardha end was taken in service for 1 st time.	400	0956 Hrs on 31.12.2012
14	In WR, Line reactor of 63 MVar in 400 kV Raipur-Wardha-II Line was taken in service for 1 st time at Raipur end	400	0956 Hrs on 31.12.2012

15	In WR,400 kV Raipur-Wardha-II was taken in service for 1 st time at Raipur end.	400	2335 Hrs on 31.12.2012
16	In NR,at Agra S/S, 3*80 MVA, Bus Reactor was charged for 1 st time.	765	1755 Hrs on 31.12.2012
17	In WR, 400 kV CGPL Mundra-Jetpur-I was synchronised for 1 st time.	400	2234 Hrs on 31.12.2012
18	In WR, 400 kV CGPL Mundra-Jetpur-I was synchronised for 1 st time.	400	2359 Hrs on 31.12.2012
19	In WR , at Chhegaon S/S of MPPTCL an ICT of 315 MVA capacity energized from 220 kV side for the first time	400	Dec-2012

VOLTAGE PROFILE - DECEMBER 2012

SI. No.	REGION	SUBSTATION	Maximum(kV)	Minimum(kV)	Average(kV)
1	ER	FARAKKA	426	411	419
2		KAHALGAON	431	413	422
3		TALCHER	422	405	414
4		BINAGURI	430	390	412
5		PURNEA	424	395	410
6		MUZAFFARPUR	427	400	414
7		JAMSHEDPUR	435	420	428
8		RENGALI	421	405	413
9		JEYPORE	435	383	411
1	NR	NALLAGARH	428	396	411
2		BHIWADI	434	394	413
3		BALLABGARH	433	399	415
4		ALLAHABAD	428	400	414
5		HISSAR	423	388	394
6		BAWANA	431	399	415
7		KANPUR	424	392	408
8		BASSI	436	395	412
9		LUCKNOW PG	429	398	416
10		MOGA	426	388	406
11		RATANGARH	426	394	410
1	WR	ASOJ	421	402	411
2		ITARSI	426	392	413
3		JETPUR	425	396	411
4		KARAD	413	400	408
5		KASOR	422	407	415
6		BINA	427	392	413
7		GWALIOR	427	399	413
8		RAIPUR	445	408	414
9		JABALPUR	429	400	415
10		DHULE	437	393	418

VOLTAGE PROFILE - DECEMBER 2012

SI. No.	REGION	SUBSTATION	Maximum(kV)	Minimum(kV)	Average(kV)
1	SR	SRIPERUMPUDUR	422	392	407
2		NEYVELI	416	396	409
3		SALEM	417	388	404
4		BANGALORE	420	385	407
5		HOSUR	417	388	399
6		RAMAGUNDAM	420	406	415
7		VIJAYAWADA	436	415	426
8		TIRIVANDRUM	428	390	404
9		HYDERABAD	433	412	420
1	NER	MISA	426	391	410
2		BALIPARA	411	372	400
3		BONGAIGAON	420	385	397
4		SALAKATI 220 kV	237	217	223
5		HAFLONG 132 kV	136	127	133
6		AIZWAL 132 kV	136	118	128
7		KUMARGHAT 132 kV	136	125	131
8		IMPHAL 132 kV	143	129	132
9		Khlieriat_PG 132 kV	138	123	132