

पावर सिस्टम ऑपरेशन कॉरपोरेशन लिमिटेड

(पावरग्रिड की पूर्ण स्वामित्व प्राप्त सहायक कंपनी)

POWER SYSTEM OPERATION CORPORATION LIMITED

(A wholly owned subsidiary of POWERGRID)



पंजीकृत एवं केन्द्रीय कार्यालय: बी-9, प्रथम तल, कुतुब इंस्टीट्यूशनल एरिया, कटवारिया सराय, नई दिल्ली-110 016
Registered & Corporate Office : B - 9, 1st Floor, Qutub Institutional Area, Katwaria Sarai, New Delhi - 110 016
Website : www.posoco.in, www.nldc.in, Tel: 011-26536832, 26524522, Fax: 011-26524525, 26536901

संदर्भ संख्या:-POSOCO/NLDC/GM/

दिनांक: 26.02.2015

सेवा में,

वितरण सूची के अनुसार

विषय:- निष्पादन रिपोर्ट - जनवरी 2015

महोदय,

आई०ई०जी०सी०-2010 के प्रावधान के अनुसार, - जनवरी 2015 माह की अखिल भारतीय प्रणाली की निष्पादन रिपोर्ट संलग्न है।

धन्यवाद

भवदीय

(एस आर नरसिंहन)

अपर महाप्रबंधक

(रा०भा०प्रे०के०)

संलग्नक: मासिक प्रणाली रिपोर्ट

वितरण सूची

Distribution List

1. सचिव, के.वि.नि.आ. तीसरा एवं चौथा तल, चंद्रलोक भवन, 36, जनपथ, नई दिल्ली - 110001
Secretary, CERC, 3rd & 4th Floor, Chanderlok Building, 36, Janpath, New Delhi-110001
2. मुख्य अभियंता, (जी एम), के. वि. प्रा., सेवा भवन , आर. के. पुरम , नई दिल्ली - 110066
Chief Engineer (GM), CEA, Sewa Bhavan, R.K.Puram , New Delhi-110066
3. सदस्य सचिव, ऊ. क्षे. वि. स., 18/ ए , शहीद जीत सिंह सनसनवाल मार्ग, नई दिल्ली - 110016
Member Secretary, NRPC, 18/A, SJSS Marg, Katwaria Sarai, New Delhi-110016
4. सदस्य सचिव, प. क्षे. वि. स., एफ-3, एम आई डी सी क्षेत्र , अंधेरी, मुंबई - 400093
Member Secretary, WRPC, F-3, MIDC Area, Andheri (East), Mumbai-400093
5. सदस्य सचिव, द. क्षे. वि. स., 29, रेस कोर्स क्रॉस रोड, बंगलुरु - 560009
Member Secretary, SRPC, 29, Race Course Cross Road, Bangalore-560009
6. सदस्य सचिव, पू. क्षे. वि. स., 14, गोल्फ क्लब रोड, कोलकाता - 700033
Member Secretary, ERPC, 14, Golf Club Road , Kolkata-700033
7. सदस्य सचिव, ऊ. पू. क्षे. वि. स., मेघालय राज्य आवसीय वित्त सहकारी समिति लिमिटेड भवन , नॉग्रिम हिल्स, शिलॉंग - 793003
Member Secretary, NERPC, Meghalaya State Housing Finance Cooperative Society Ltd. Building, Nongrim Hills , Shillong -793003
8. महाप्रबंधक, पू. क्षे. भा. प्रे. के., 14, गोल्फ क्लब रोड , कोलकाता - 700033
General Manager, ERLDC, 14, Golf Club Road , Kolkata-700033
9. महाप्रबंधक, प. क्षे. भा. प्रे. के., एफ-3, एम आई डी सी क्षेत्र , अंधेरी, मुंबई - 400093
General Manager, WRLDC, F-3, MIDC Area, Andheri (East), Mumbai-400093
10. महाप्रबंधक, ऊ. क्षे. भा. प्रे. के., 18/ ए , शहीद जीत सिंह सनसनवाल मार्ग, नई दिल्ली - 110016
General Manager, NRLDC, 18/A, SJSS Marg, Katwaria Sarai, New Delhi-110016
11. कार्यपालक निदेशक, द. क्षे. भा. प्रे. के., 29, रेस कोर्स क्रॉस रोड, बंगलुरु - 560009
Executive Director, SRLDC, 29, Race Course Cross Road, Bangalore-560009
12. महाप्रबंधक, ऊ. पू. क्षे. भा. प्रे. के., डोंगतिह, लोअर नॉग्रह , लापलंग, शिलॉंग - 793006
General Manager, NERLDC, Dongtieh, Lower Nongrah, Laplang, Shillong-793006



POWER SYSTEM OPERATION CORPORATION LIMITED

(A wholly owned subsidiary of POWERGRID)

पाँवर सिस्टम ऑपरेशन कारपोरेशन लिमिटेड

NATIONAL LOAD DESPATCH CENTRE –राष्ट्रीय भार प्रेषण केन्द्र

मासिक ऑपरेशन रिपोर्ट

Monthly
Operation Report



जनवरी 2015

पावर सिस्टम ऑपरेशन कॉर्पोरेशन लिमिटेड
राष्ट्रीय भार प्रेषण केंद्र, नई दिल्ली

POWER SYSTEM OPERATION CORPORATION LTD
NATIONAL LOAD DESPATCH CENTRE, NEW DELHI



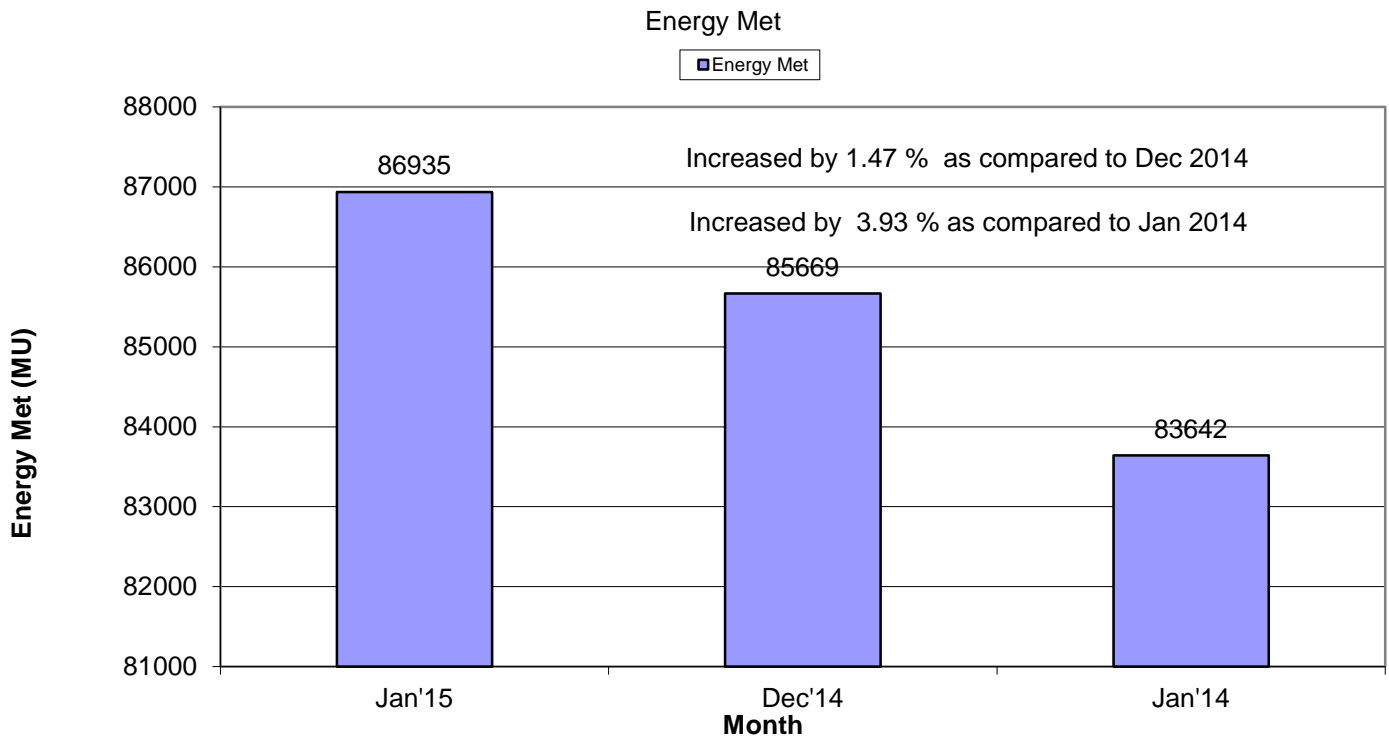
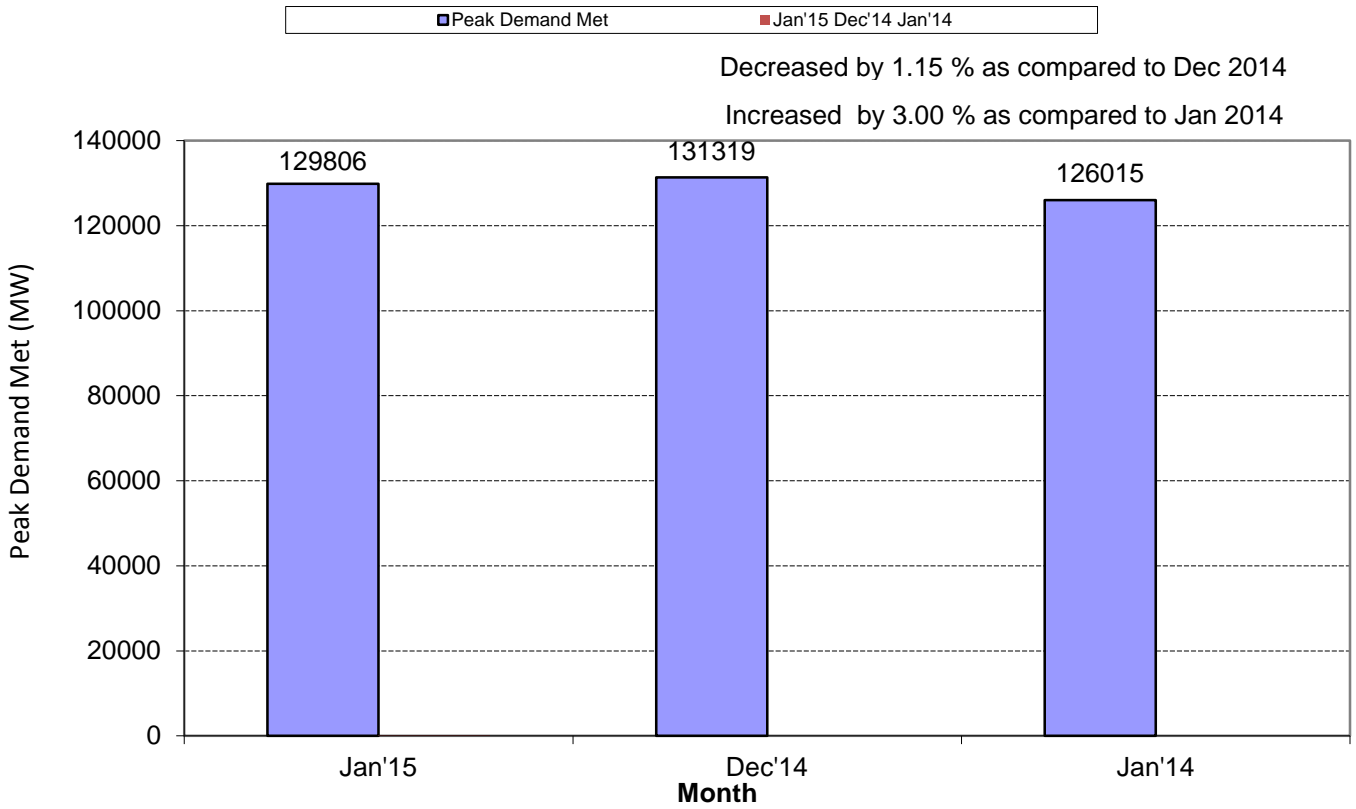
माह जनवरी 2015 के लिए प्रचालन निष्पादन रिपोटर
OPERATIONAL PERFORMANCE REPORT FOR THE
MONTH OF JANUARY 2015

पृष्ठसूची CONTENTS

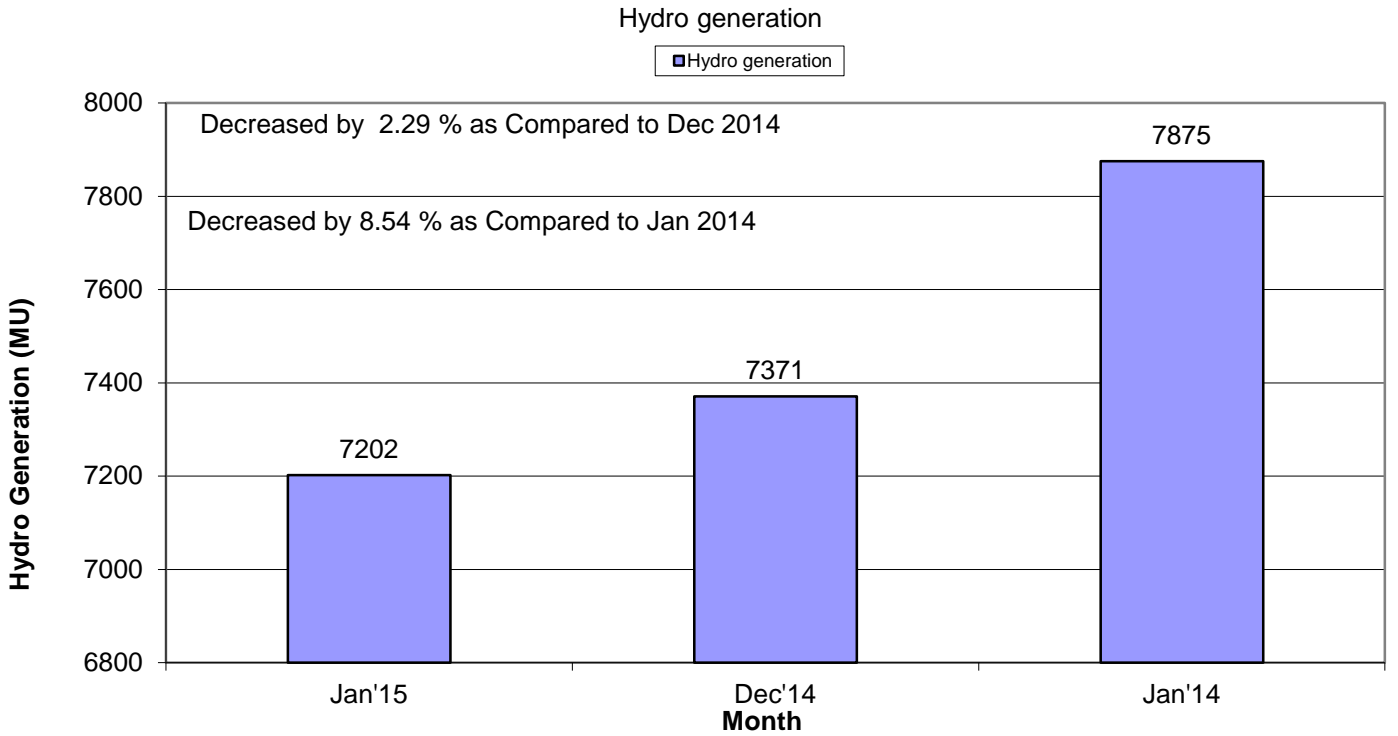
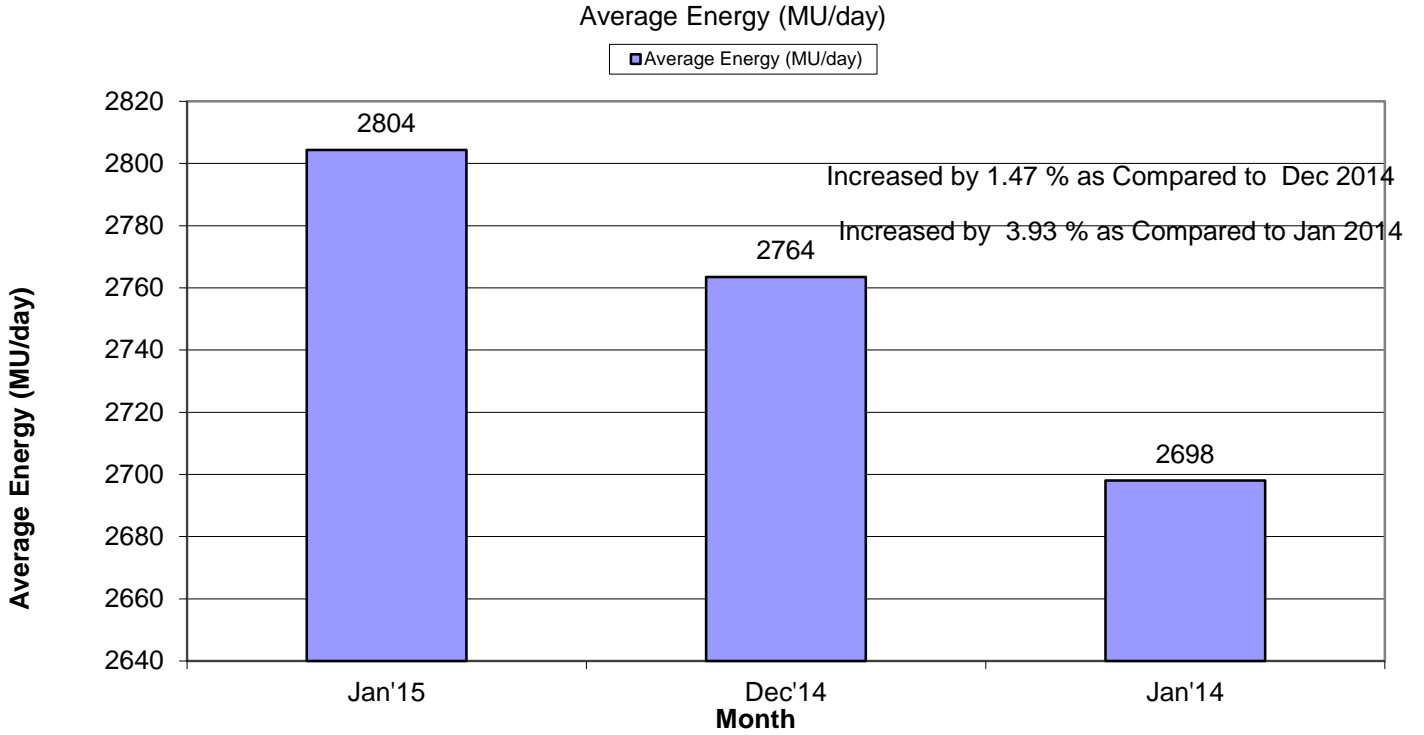
1.	माह जनवरी 2015 की सारांश रिपोटर SUMMARY OF REPORT FOR THE MONTH OF JANUARY 2015	1-4
2.	क्षेत्रवार स्थापित विधुत क्षमता REGION WISE INSTALLED CAPACITY	5
3.	राष्ट्रीय स्तर पर संध्यकालीन शिखर मांगपूर्ति PEAK DEMAND MET AT NATIONAL LEVEL	6-8
4.	राष्ट्रीय स्तर पर विधुत ऊर्जा खपत ENERGY CONSUMPTION AT NATIONAL LEVEL	9-10
5.	फ्रिक्वेन्सी रूपरेखा FREQUENCY PROFILE	11-13
6.	राष्ट्रीय स्तर पर जल विधुत ऊर्जा उत्पादन HYDRO GENERATION AT NATIONAL LEVEL	14-15
7.	राष्ट्रीय स्तर पर पन विधुत ऊर्जा उत्पादन WIND GENERATION AT NATIONAL LEVEL	16
8.	ऊर्जा आपूर्ति की वास्तविक स्थिति ACTUAL POWER SUPPLY POSITION	17
9.	शिखर मांग आवश्यकता एवं आपूर्ति की पिछले वषर के माह जनवरी से तुलना ENERGY REQUIREMENT & MET COMPARISON WITH JANUARY 2014	18
10.	ऊजार आवश्यकता एवं आपूर्ति की पिछले वषर के जनवरी माह से तुलना PEAK DEMAND REQUIREMENT & MET COMPARISON WITH JANUARY 2014	19
11.	क्षेत्रीय स्तर पर शिड्यूल एवं ड्रावल SCHEDULE & DRAWAL AT REGIONAL LEVEL	20
12.	अंतर क्षेत्रीय विनिमय INTER-REGIONAL EXCHANGES	21-27
13.	अंतर राष्ट्रीय विधुत विनिमय INTER-NATIONAL EXCHANGES	28
14.	एसटीओए (द्विपक्षीय एवं सामूहिक) एवं यू आई का ब्यौरा BILATERAL & COLLECTIVE SHORT-TERM OPEN ACCESS & UI DETAILS	29
15.	पावर मार्केट की सूचना POWER MARKET INFORMATION	30-31

16. अक्षय ऊर्जा प्रमाण - पत्र प्रक्रिया RENEWABLE ENERGY CERTIFICATE MECHANISM	32-34
17. मुख्य घटनाये एवं डिसटर्बेनसेज IMPORTANT EVENTS/DISTURBANCES	35-40
18. नये कमीशंड पारेषण तत्व NEW ELEMENTS COMMISSIONED	41
19. विभव रूपरेखा VOLTAGE PROFILE	42

1. SUMMARY OF REPORT FOR THE MONTH OF JANUARY 2015

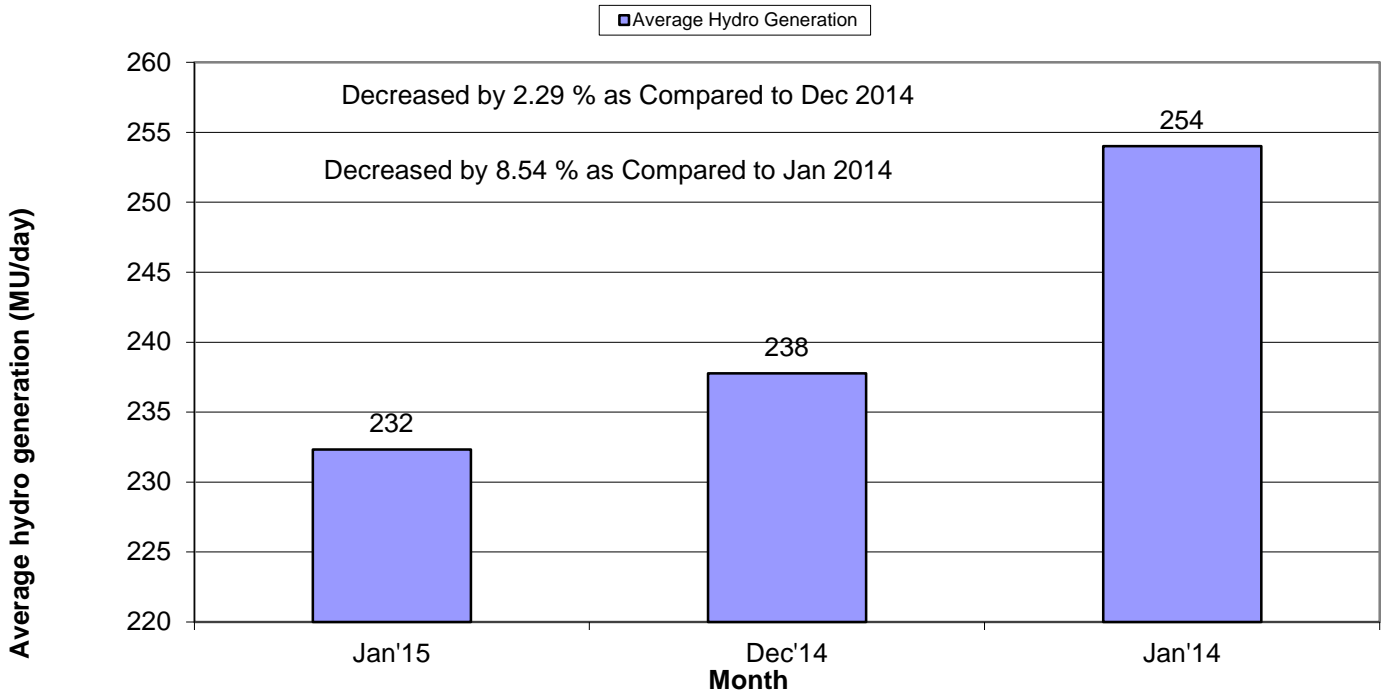


1. SUMMARY OF REPORT FOR THE MONTH OF JANUARY 2015

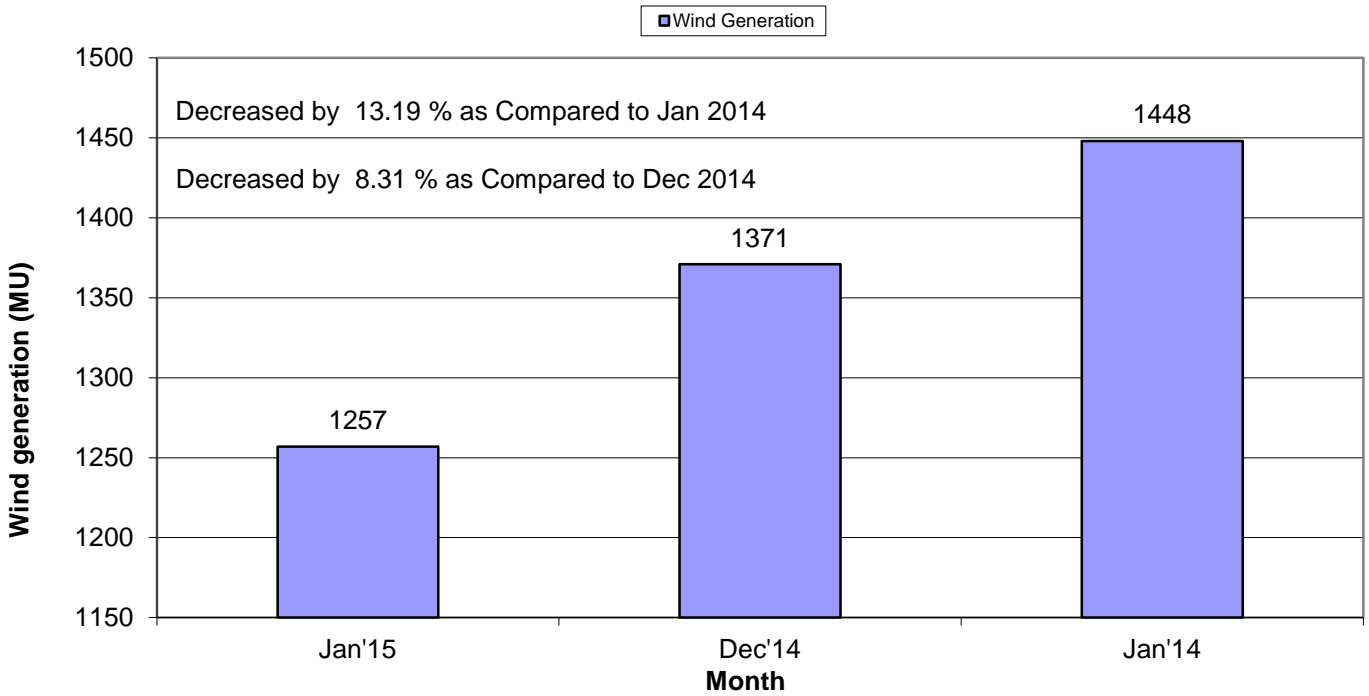


1. SUMMARY OF REPORT FOR THE MONTH OF JANUARY 2015

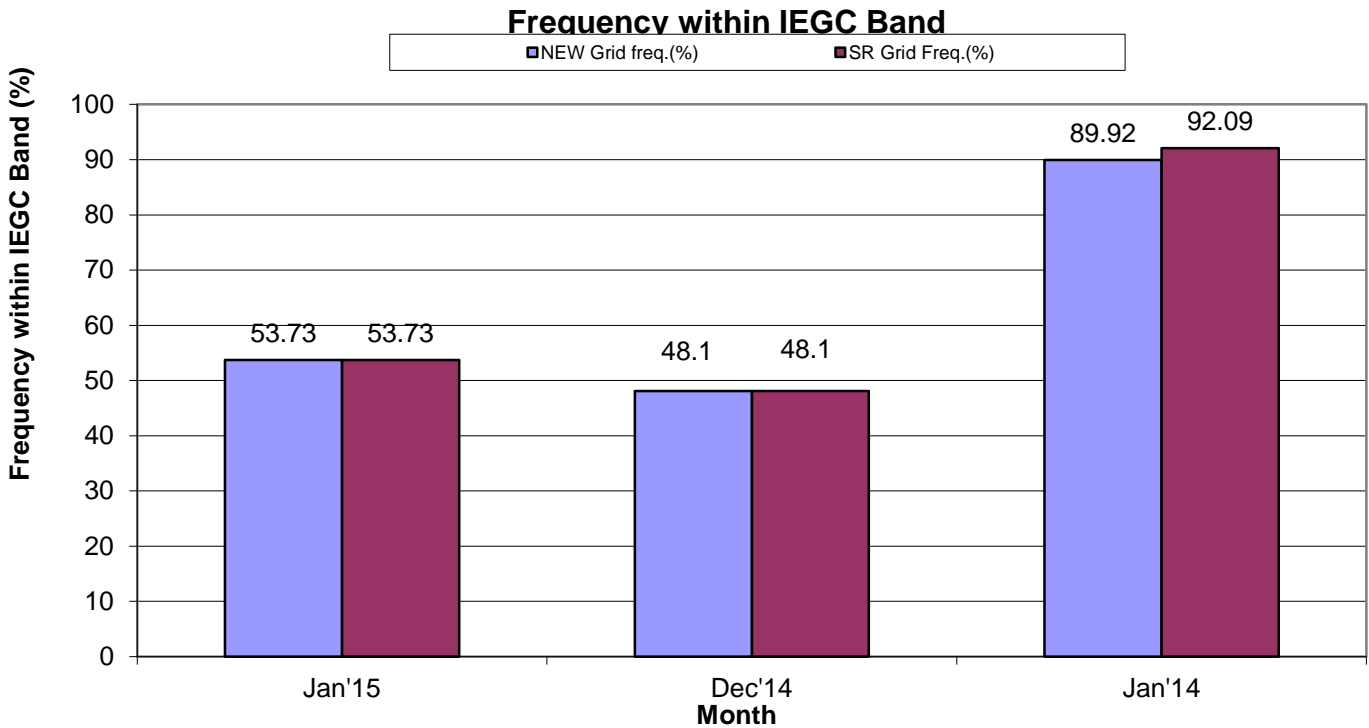
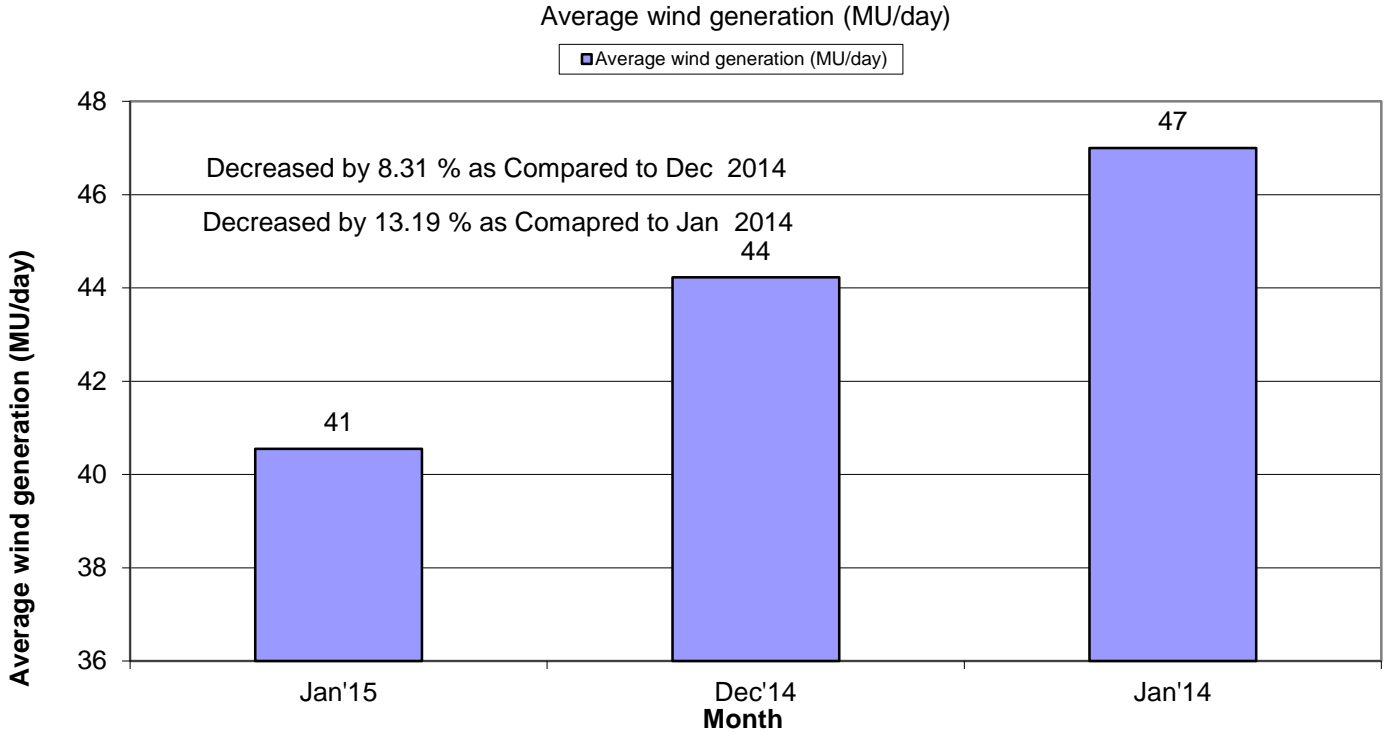
Average Hydro Generation



Wind Generation



1. SUMMARY OF REPORT FOR THE MONTH OF JANUARY 2015



- W.e.f 17th Feb 2014, IEGC Band has been changed to 49.9 to 50.05 from 49.70 – 50.20

(2) ALL INDIA REGIONWISE INSTALLED CAPACITY

As on 31.01.2015
(All figures are in MW)

S No	Region	THERMAL				NUCLEAR	HYDRO	RES @ MNRE	GRAND TOTAL
		COAL	GAS	DIESEL	TOTAL				
1	NR	39431	5331	13	44775	1620	16666	5936	68997
2	WR	61040	10915	17	71973	1840	7448	11271	92531
3	SR	28232	4963	939	34134	2320	11398	13785	61637
4	ER	27247	190	17	27635	0	4113	433	32181
5	NER	60	1571	143	1774	0	1242	257	3272
6	ISLANDS	0	0	70	70	0	0	11	81
		156010	22970	1200	180361	5780	40867	31692	258700

Remarks: Data from CEA website

3. राष्ट्रीय स्तर पर संध्याकालीन शिखर विद्युत मांग पूर्ति

PEAK DEMAND MET AT NATIONAL LEVEL

माह:- जनवरी 2015

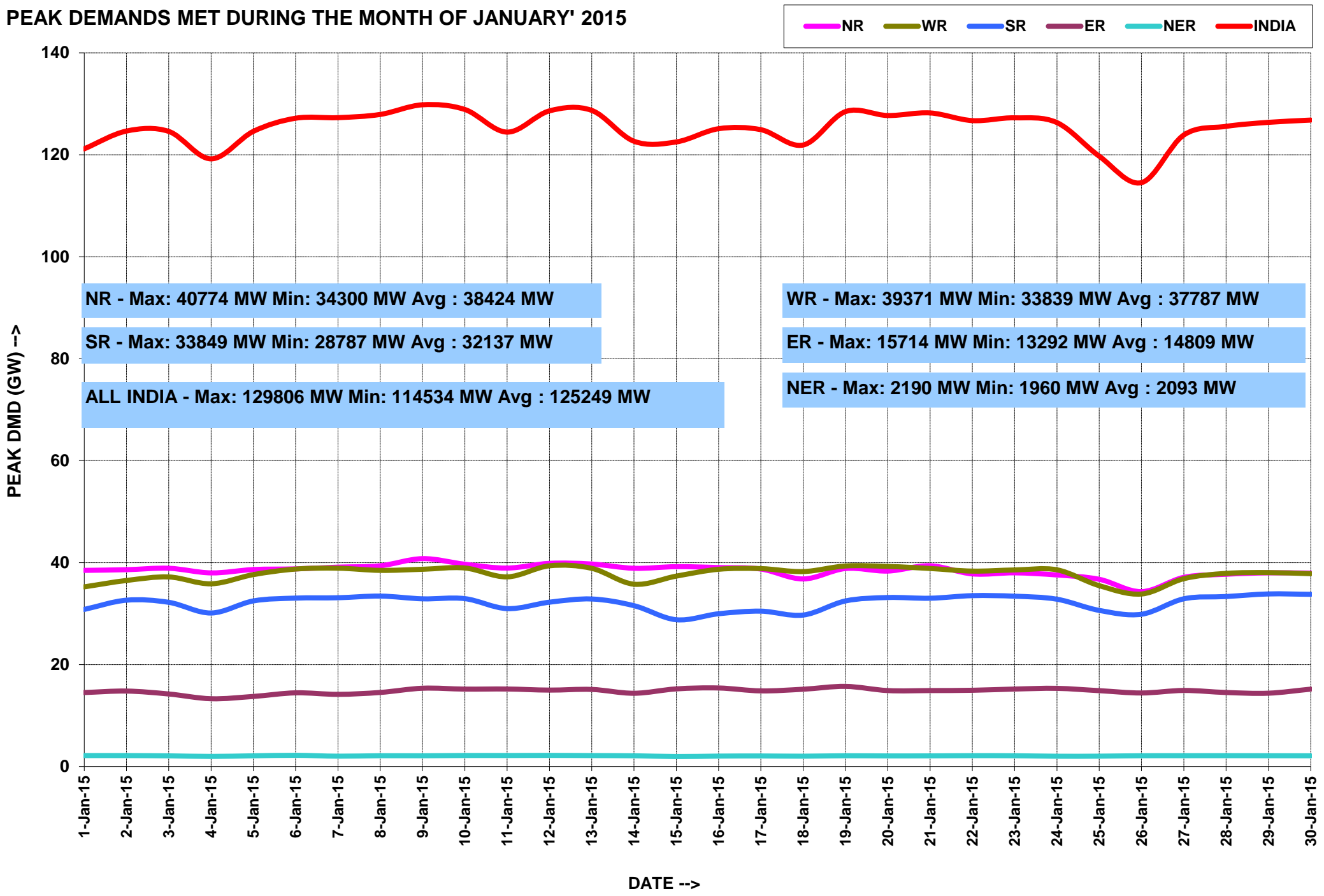
MONTH:- January 2015

सभी आकड़े मेगावाट में All figures in MW

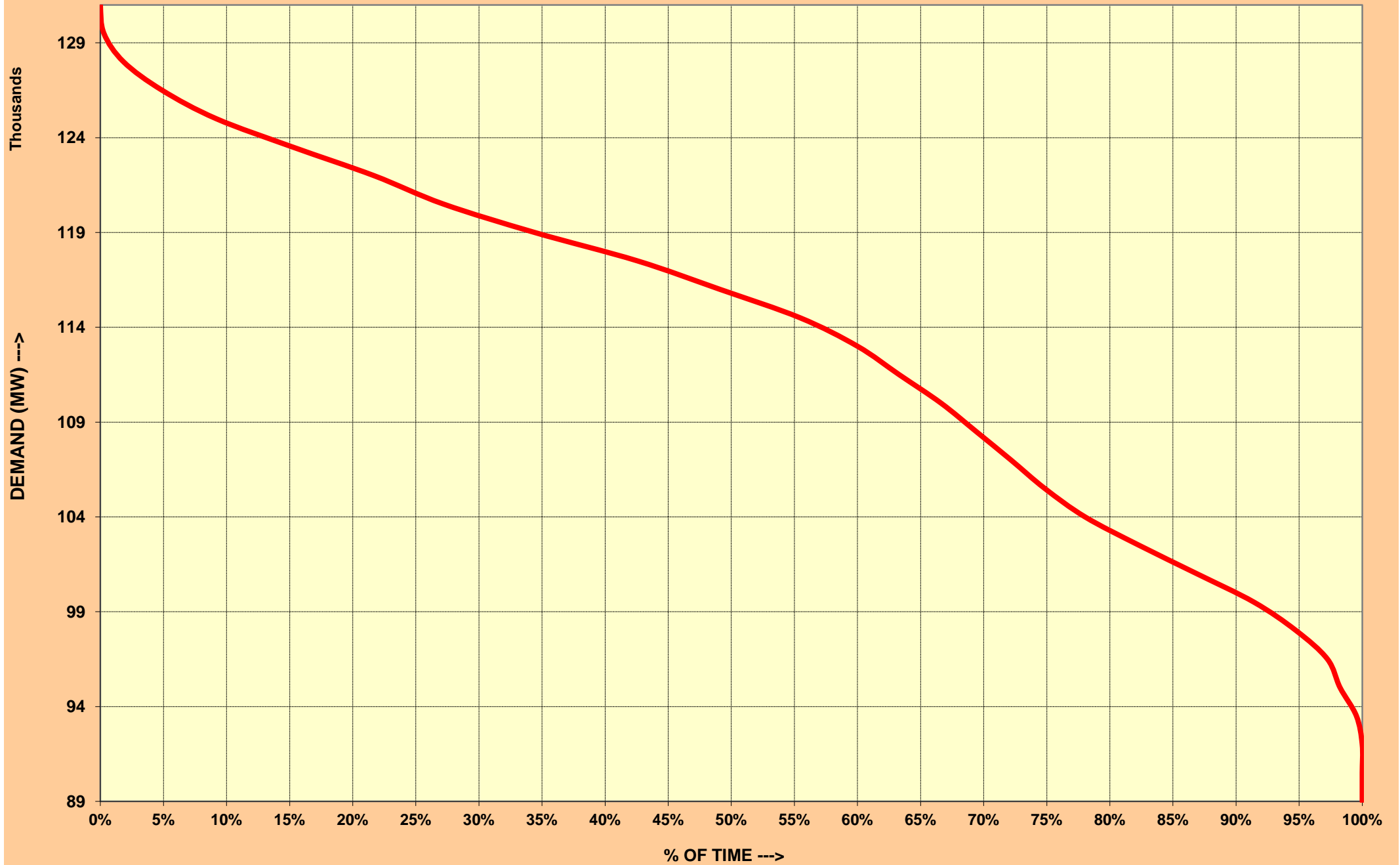
दिनांक Date	उत्तरी क्षे. NR	पश्चिमी क्षे. WR	दक्षिणी क्षे. SR	पूर्वी क्षे. ER	पूर्वोत्तर क्षे. NER	कुल TOTAL
01-Jan-15	38472	35235	30810	14507	2140	121164
02-Jan-15	38606	36490	32624	14796	2138	124654
03-Jan-15	38886	37181	32205	14223	2086	124581
04-Jan-15	37978	35839	30111	13292	1981	119201
05-Jan-15	38635	37641	32479	13743	2094	124592
06-Jan-15	38768	38730	33033	14449	2190	127170
07-Jan-15	39104	38900	33104	14152	2022	127282
08-Jan-15	39376	38471	33428	14525	2113	127913
09-Jan-15	40774	38686	32890	15352	2104	129806
10-Jan-15	39677	38941	32927	15182	2157	128884
11-Jan-15	38926	37198	30970	15199	2154	124447
12-Jan-15	39847	39371	32231	14986	2175	128610
13-Jan-15	39716	38874	32858	15117	2141	128706
14-Jan-15	38884	35759	31544	14366	2099	122652
15-Jan-15	39199	37348	28787	15223	1960	122517
16-Jan-15	39023	38688	29963	15400	2038	125112
17-Jan-15	38735	38820	30473	14831	2063	124922
18-Jan-15	36792	38238	29709	15157	2021	121917
19-Jan-15	38835	39337	32476	15714	2106	128468
20-Jan-15	38340	39249	33147	14893	2072	127701
21-Jan-15	39377	38844	33008	14895	2083	128207
22-Jan-15	37781	38330	33514	14952	2124	126701
23-Jan-15	37990	38553	33407	15193	2106	127249
24-Jan-15	37574	38581	32815	15328	2013	126311
25-Jan-15	36722	35475	30621	14875	2026	119719
26-Jan-15	34300	33839	29865	14420	2110	114534
27-Jan-15	37103	36844	32896	14917	2118	123878
28-Jan-15	37711	37881	33341	14515	2124	125572
29-Jan-15	37987	38036	33849	14379	2111	126362
30-Jan-15	37936	37822	33776	15173	2098	126805
31-Jan-15	38079	38182	33382	15331	2113	127088
उच्चतम MAXIMUM	40774	39371	33849	15714	2190	129806
निम्नतम MINIMUM	34300	33839	28787	13292	1960	114534
औसत AVERAGE	38424	37787	32137	14809	2093	125249
अब तक का उच्चतम All Time Max.	46681	43764	36126	17649	2190	138215
दिनांक Date	26.08.14	29.09.14	24.03.14	22.10.14	06.01.2015	25.09.14

नोट : सभी आकड़े 1900 बजे की मांगपूर्ति पर आधारित हैं । Note: The above figures corresponds to value at 1900 Hrs

PEAK DEMANDS MET DURING THE MONTH OF JANUARY' 2015



ALL INDIA LOAD DURATION CURVE FOR JANUARY' 2015

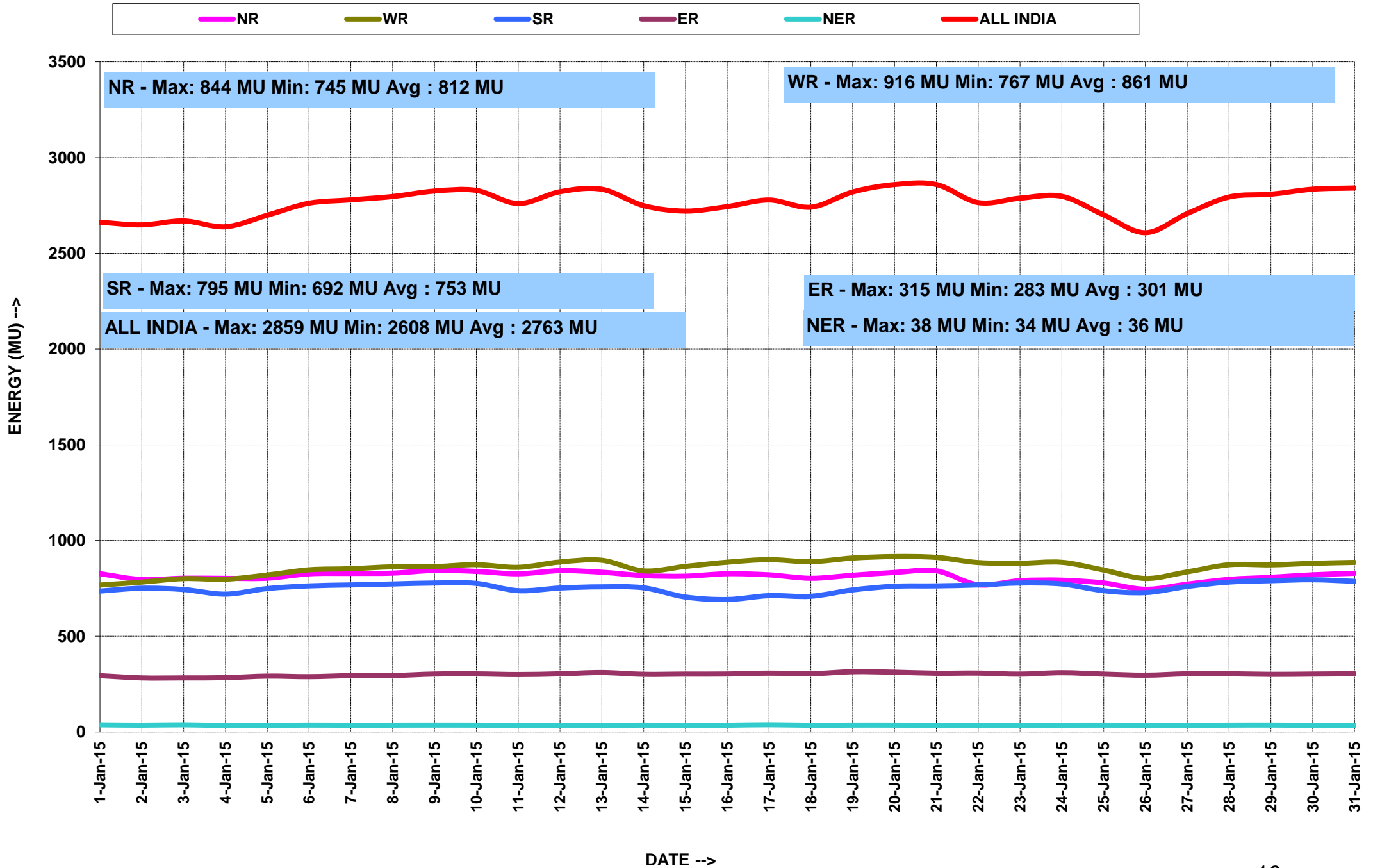


4. राष्ट्रीय स्तर पर विद्युत ऊर्जा आपूर्ति ENERGY MET AT NATIONAL LEVEL

माह:- जनवरी 2015 MONTH:- January 2015
सभी आंकड़े मिलियन यूनिट में All figures in MU

दिनांक Date	उत्तरी क्षे. NR	पश्चिमी क्षे. WR	दक्षिणी क्षे. SR	पूर्वी क्षे. ER	पूर्वोत्तर क्षे. NER	कुल TOTAL
01-Jan-15	827	767	736	294	38	2662
02-Jan-15	796	783	751	283	36	2648
03-Jan-15	803	801	744	283	38	2669
04-Jan-15	803	798	720	284	34	2639
05-Jan-15	803	820	749	292	35	2699
06-Jan-15	826	847	763	289	36	2762
07-Jan-15	828	853	768	295	36	2779
08-Jan-15	830	863	773	295	36	2797
09-Jan-15	844	864	778	303	36	2825
10-Jan-15	839	874	776	304	36	2829
11-Jan-15	826	860	738	300	35	2760
12-Jan-15	843	888	752	304	35	2822
13-Jan-15	835	897	758	311	35	2835
14-Jan-15	817	841	753	301	36	2749
15-Jan-15	814	865	705	303	34	2721
16-Jan-15	827	887	692	303	36	2744
17-Jan-15	821	900	712	307	38	2779
18-Jan-15	803	889	709	304	36	2741
19-Jan-15	819	909	742	315	36	2821
20-Jan-15	833	916	761	312	36	2859
21-Jan-15	842	912	763	307	35	2859
22-Jan-15	769	885	768	308	36	2765
23-Jan-15	791	881	778	302	36	2788
24-Jan-15	793	887	773	310	36	2798
25-Jan-15	778	846	738	302	36	2701
26-Jan-15	745	802	728	297	35	2608
27-Jan-15	772	836	760	304	35	2708
28-Jan-15	797	874	783	304	36	2794
29-Jan-15	808	873	790	301	37	2809
30-Jan-15	821	881	795	303	35	2835
31-Jan-15	829	886	787	304	35	2841
कुल TOTAL	25180	26687	23343	9326	1111	85645
उच्चतम MAXIMUM	844	916	795	315	38	2859
निम्नतम MINIMUM	745	767	692	283	34	2608
औसत AVERAGE	812	861	753	301	36	2763
अब तक का उच्चतम All Time Max.	1096	1028	845	367	40	3120
दिनांक Date	11.07.14	29.09.14	26.03.14	26.04.14	02.07.2014	25.06.14

ENERGY MET DURING THE MONTH OF JANUARY' 2015



5.वर्ष 2014-15 के लिए आवृत्ति रूपरेखा FREQUENCY PROFILE FOR YEAR 2014-15

राष्ट्रीय ग्रिड NATIONAL GRID								
फ्रिक्वेंसी रूपरेखा (Hz)	49.0-49.9	<49.9	49.9-50.05	>50.05	उच्चतम फ्रिक्वेंसी	निम्नतम फ्रिक्वेंसी	औसत फ्रिक्वेंसी	
ऑल इंडिया ग्रिड ALL INDIA GRID								
% समय	Jan-15	17.46	17.46	53.73	28.81	50.56	49.55	50.00
% समय	Dec-14	22.54	22.54	48.10	29.36	50.58	49.54	49.98
% समय	Nov-14	20.97	20.97	48.88	30.15	50.42	49.58	50.00
ऑल इंडिया ग्रिड NEW GRID**								
% समय	Oct-14	24.82	24.82	53.07	22.11	50.48	49.53	49.97
द. क्षे. ग्रिड SR GRID**								
% समय	Oct-14	25.32	25.32	52.25	22.38	50.48	49.53	49.97
ऑल इंडिया ग्रिड ALL INDIA GRID								
फ्रिक्वेंसी रूपरेखा (Hz)	49.0-49.9	<49.9	49.9-50.05	>50.05	उच्चतम फ्रिक्वेंसी	निम्नतम फ्रिक्वेंसी	औसत फ्रिक्वेंसी	
% समय	Sep-14	28.51	28.51	53.81	17.68	50.37	49.34	49.95
% समय	Aug-14	40.11	40.11	49.04	10.85	50.34	49.36	49.97
% समय	Jul-14	34.45	34.45	50.36	14.91	50.36	49.40	49.94
ऑल इंडिया ग्रिड NEW GRID*								
% समय	Jun-14	37.27	37.27	45.32	17.41	50.65	49.32	49.93
% समय	May-14	22.39	22.39	53.09	24.52	50.56	49.41	49.98
द. क्षे. ग्रिड SR GRID*								
% समय	Jun-14	40.68	40.68	43.93	15.40	50.65	49.32	49.92
% समय	May-14	26.88	26.88	51.54	21.58	50.56	49.41	49.97

* On Account of separation of SR GRID from NEW GRID for a brief time during the month of May & June 2014

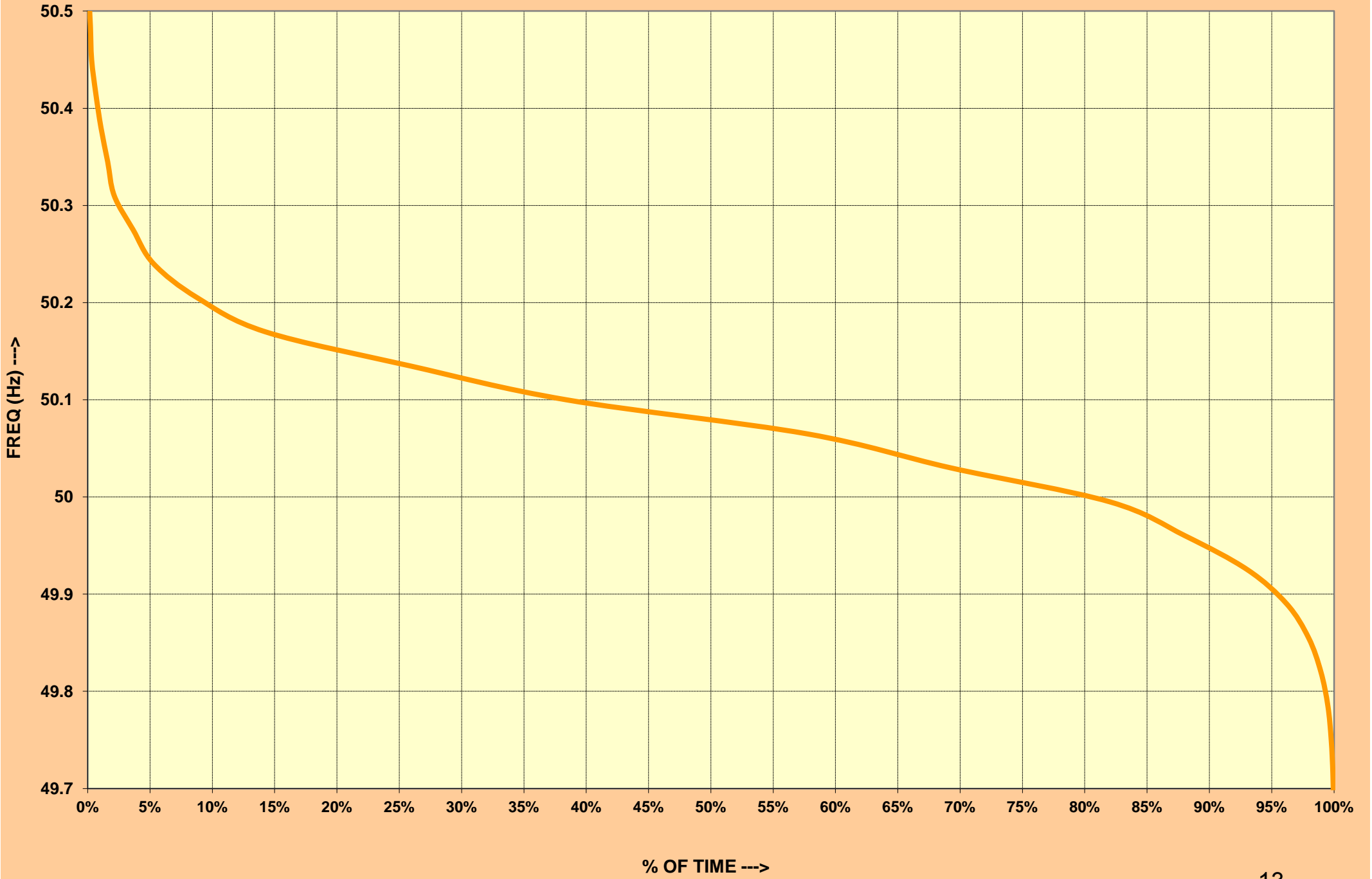
** On Account of separation of SR GRID from NEW GRID on 16th October 2014

5.2 जनवरी 2015 के लिए आवृत्ति रूपरेखा FREQUENCY PROFILE FOR JANUARY 2015

अखिल भारतीय ग्रिड ALL INDIA GRID

फ़िक्वेंसी रूपरेखा (Hz)		<49.0	49.0-49.9	<49.9	49.9-50.05	>50.05	उच्चतम फ़िक्वेंसी	निम्नतम फ़िक्वेंसी	औसत फ़िक्वेंसी
% समय	01-Jan-15	0.00	7.07	7.07	41.92	51.01	50.56	49.69	50.07
	02-Jan-15	0.00	14.71	14.71	43.14	42.15	50.55	49.63	50.06
	03-Jan-15	0.00	19.21	19.21	53.51	27.28	50.38	49.67	49.99
	04-Jan-15	0.00	4.63	4.63	48.48	46.89	50.39	49.75	50.04
	05-Jan-15	0.00	13.82	13.82	51.47	34.71	50.42	49.68	50.02
	06-Jan-15	0.00	25.66	25.66	53.75	20.59	50.22	49.67	49.97
	07-Jan-15	0.00	27.57	27.57	50.52	21.91	50.21	49.62	49.96
	08-Jan-15	0.00	29.14	29.14	54.78	16.08	50.26	49.60	49.95
	09-Jan-15	0.00	20.19	20.19	56.82	23.00	50.34	49.63	49.98
	10-Jan-15	0.00	17.88	17.88	55.60	26.52	50.29	49.57	49.99
	11-Jan-15	0.00	5.65	5.65	55.79	38.56	50.41	49.75	50.03
	12-Jan-15	0.00	13.89	13.89	55.89	30.22	50.36	49.70	50.00
	13-Jan-15	0.00	16.72	16.72	57.01	26.26	50.39	49.68	50.00
	14-Jan-15	0.00	5.86	5.86	49.03	45.12	50.34	49.77	50.04
	15-Jan-15	0.00	18.95	18.95	64.84	16.22	50.32	49.55	49.97
	16-Jan-15	0.00	37.21	37.21	50.68	12.11	50.19	49.65	49.93
	17-Jan-15	0.00	21.76	21.76	61.26	16.98	50.31	49.63	49.96
	18-Jan-15	0.00	19.46	19.46	58.96	21.59	50.27	49.58	49.97
	19-Jan-15	0.00	25.52	25.52	51.90	22.58	50.30	49.66	49.97
	20-Jan-15	0.00	28.06	28.06	53.60	18.34	50.33	49.61	49.96
	21-Jan-15	0.00	32.93	32.93	43.22	23.85	50.31	49.56	49.96
	22-Jan-15	0.00	10.50	10.50	53.65	35.86	50.40	49.75	50.03
	23-Jan-15	0.00	23.48	23.48	58.56	17.95	50.27	49.69	49.97
	24-Jan-15	0.00	13.68	13.68	61.05	25.27	50.41	49.71	49.99
	25-Jan-15	0.00	16.62	16.62	47.35	36.03	50.50	49.57	50.01
	26-Jan-15	0.00	4.16	4.16	48.33	47.51	50.46	49.78	50.05
	27-Jan-15	0.00	24.47	24.47	47.96	27.57	50.43	49.58	49.98
	28-Jan-15	0.00	14.70	14.70	64.14	21.16	50.32	49.68	49.99
	29-Jan-15	0.00	11.71	11.71	53.10	35.19	50.37	49.75	50.01
	30-Jan-15	0.00	9.50	9.50	59.28	31.22	50.31	49.71	50.01
	31-Jan-15	0.00	6.68	6.68	60.03	33.29	50.38	49.77	50.02

ALL INDIA GRID FREQUENCY DUR ATION CURVE FOR JANUARY' 2015



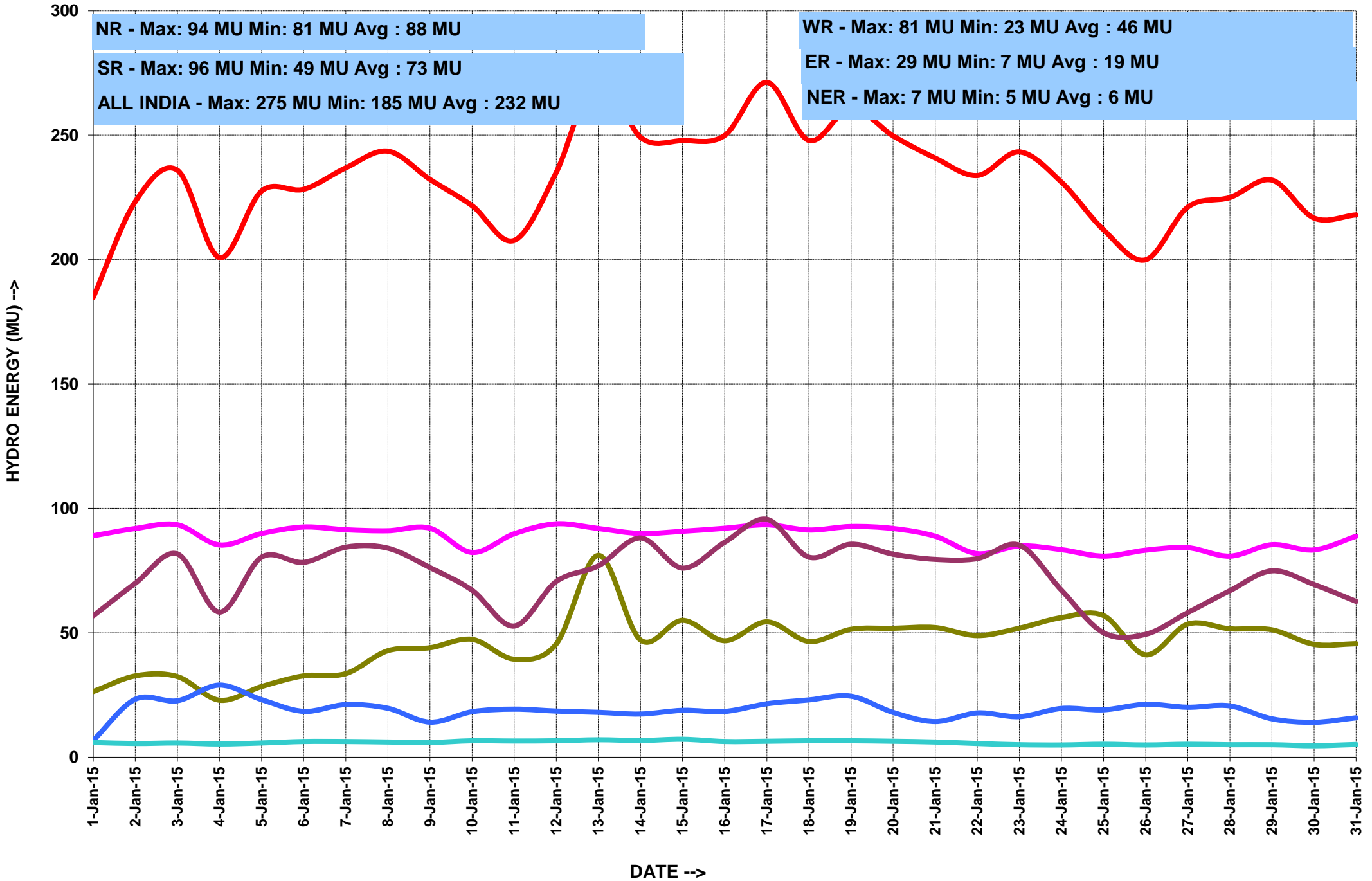
6.राष्ट्रीय स्तर पर जल विद्युत उत्पादन
HYDRO GENERATION AT NATIONAL LEVEL

माह:- जनवरी 2015 MONTH:- January 2015

सभी आंकड़े मिलियन यूनिट में All figures in MU

दिनांक Date	उत्तरी क्षे. NR	पश्चिमी क्षे. WR	दक्षिणी क्षे. SR	पूर्वी क्षे. ER	पूर्वोत्तर क्षे. NER	कुल TOTAL
01-Jan-15	89	26	57	7	6	185
02-Jan-15	92	33	70	23	6	223
03-Jan-15	93	32	82	23	6	236
04-Jan-15	85	23	58	29	5	201
05-Jan-15	90	28	80	23	6	228
06-Jan-15	93	33	78	18	6	228
07-Jan-15	91	34	84	21	6	237
08-Jan-15	91	43	84	20	6	244
09-Jan-15	92	44	76	14	6	232
10-Jan-15	82	47	67	18	7	222
11-Jan-15	90	39	53	19	7	208
12-Jan-15	94	46	71	19	7	235
13-Jan-15	92	81	77	18	7	275
14-Jan-15	90	47	88	17	7	249
15-Jan-15	91	55	76	19	7	248
16-Jan-15	92	47	86	18	6	250
17-Jan-15	93	54	96	21	6	271
18-Jan-15	91	47	80	23	7	248
19-Jan-15	93	51	86	25	7	261
20-Jan-15	92	52	82	18	6	250
21-Jan-15	89	52	80	14	6	241
22-Jan-15	82	49	80	18	6	234
23-Jan-15	85	52	85	16	5	243
24-Jan-15	83	56	67	20	5	231
25-Jan-15	81	57	50	19	5	212
26-Jan-15	83	41	49	21	5	200
27-Jan-15	84	54	58	20	5	221
28-Jan-15	81	52	67	21	5	225
29-Jan-15	85	51	75	15	5	232
30-Jan-15	83	45	69	14	5	217
31-Jan-15	89	46	63	16	5	218
कुल TOTAL	2742	1416	2274	588	182	7202
उच्चतम MAXIMUM	94	81	96	29	7	275
निम्नतम MINIMUM	81	23	49	7	5	185
औसत AVERAGE	88	46	73	19	6	232
अब तक का उच्चतम All Time Max.	332	142	202	94	27	712
दिनांक Date	31.07.14	29.09.11	08.08.13	09.09.13	14.09.10	27.08.13

HYDRO ENERGY DURING THE MONTH OF JANUARY' 2015



7. राष्ट्रीय स्तर पर पवन ऊर्जा उत्पादन
WIND GENERATION AT NATIONAL LEVEL

माह:- जनवरी 2015

MONTH:- January 2015

सभी आंकड़े मिलियन यूनिट में All figures in MU

दिनांक Date	उत्तरी क्षे. NR	पश्चिमी क्षे. WR	दक्षिणी क्षे. SR	पूर्वी क्षे. ER	पूर्वोत्तर क्षे. NER	कुल TOTAL
01-Jan-14	21	36	14	-----	-----	71
02-Jan-14	12	18	6	-----	-----	36
03-Jan-14	2	8	5	-----	-----	15
04-Jan-14	8	19	8	-----	-----	35
05-Jan-14	1	24	15	-----	-----	40
06-Jan-14	2	10	12	-----	-----	24
07-Jan-14	2	7	5	-----	-----	14
08-Jan-14	2	7	5	-----	-----	14
09-Jan-14	3	11	12	-----	-----	26
10-Jan-14	2	12	19	-----	-----	33
11-Jan-14	28	15	18	-----	-----	61
12-Jan-14	4	14	17	-----	-----	35
13-Jan-14	4	13	15	-----	-----	32
14-Jan-14	9	17	10	-----	-----	36
15-Jan-14	8	33	12	-----	-----	53
16-Jan-14	5	28	12	-----	-----	45
17-Jan-14	5	22	12	-----	-----	39
18-Jan-14	25	17	15	-----	-----	57
19-Jan-14	24	12	18	-----	-----	54
20-Jan-14	9	10	17	-----	-----	36
21-Jan-14	5	6	19	-----	-----	30
22-Jan-14	5	12	14	-----	-----	31
23-Jan-14	6	21	15	-----	-----	42
24-Jan-14	6	27	16	-----	-----	49
25-Jan-14	7	28	20	-----	-----	55
26-Jan-14	4	22	20	-----	-----	46
27-Jan-14	6	23	23	-----	-----	52
28-Jan-14	10	34	18	-----	-----	62
29-Jan-14	2	23	14	-----	-----	39
30-Jan-14	5	28	21	-----	-----	54
31-Jan-14	4	12	25	-----	-----	41
कुल TOTAL	236	569	452	1257
उच्चतम MAXIMUM	28	36	25	71
निम्नतम MINIMUM	1	6	5	14
औसत AVERAGE	8	18	15	41
अब तक का उच्चतम All Time Max.	34.9	102.8	125.1	223.8
दिनांक Date	12.06.12	22.06.14	06.08.14	03.08.12

8. ACTUAL POWER SUPPLY POSITION - January 2015

REGION	STATE	Requirement/Availability in MU/DAY			Requirement/Availability in MU				Peak Demand/Peak Met in MW			
		Requirement	Energy met	Surplus(+)/ Deficit(-)	Requirement	Energy met	Surplus(+)/ Deficit(-)	% Shortage	Requirement	Peak Demand Met	Surplus(+)/ Deficit(-)	% Shortage
NR	Chandigarh	4.0	4.0	0.0	124.5	124.5	0.0	0.0	252.0	252.0	0.0	0.0
	Delhi	65.8	65.8	0.0	2038.6	2039.9	1.2	0.1	4210.0	4405.0	195.0	4.6
	Haryana	113.9	114.0	0.0	3531.8	3533.2	1.4	0.0	6720.0	6720.0	0.0	0.0
	H.P.	25.9	25.9	0.0	803.5	803.8	0.3	0.0	1417.0	1403.0	-14.0	-1.0
	J&K	41.7	51.7	10.0	1293.9	1603.9	310.0	24.0	2393.0	2006.0	-387.0	-16.2
	Punjab	89.9	89.9	0.0	2788.2	2788.2	0.0	0.0	5296.0	5296.0	0.0	0.0
	Rajasthan	203.9	203.9	0.0	6320.4	6320.4	0.0	0.0	10179.0	10179.0	0.0	0.0
	U.P.	268.1	232.6	-35.5	8311.5	7211.3	-1100.2	15.3	12024.0	11644.0	-380.0	-3.2
	Uttarakhand	35.8	36.4	0.6	1109.1	1127.0	17.9	1.6	1942.0	1942.0	0.0	0.0
	NFF/Railway	2.1	2.1	0.0	65.7	65.7	0.0	0.0	100.0	100.0	0.0	0.0
TOTAL	851.2	826.4	-24.8	26387.3	25618.0	-769.4	-2.9	42381.0	40774.0	-1607.0	-3.8	
WR	Gujarat	248.9	248.7	-0.2	7715.6	7709.2	-6.3	-0.1	12457.0	12418.0	-39.0	-0.3
	Madhya Pradesh	155.3	155.3	0.0	4815.0	4815.0	0.0	0.0	9812.0	9766.0	-46.0	-0.5
	Chhattisgarh	68.0	67.1	-0.9	2108.3	2080.6	-27.7	-1.3	3372.0	3269.0	-103.0	-3.1
	Maharashtra	358.0	354.9	-3.1	11098.7	11002.5	-96.2	-0.9	19006.0	18408.0	-598.0	-3.1
	Goa	7.6	7.6	0.0	234.2	234.2	0.0	0.0	393.0	393.0	0.0	0.0
	D&D	5.5	5.5	0.0	169.8	169.8	0.0	0.0	271.0	271.0	0.0	0.0
	DNH	14.8	14.8	0.0	458.4	457.5	-0.8	-0.2	672.0	672.0	0.0	0.0
	ESIL	7.0	7.0	0.0	218.2	217.8	-0.4	-0.2	440.0	440.0	0.0	0.0
TOTAL	865.1	860.9	-4.2	26818.0	26686.6	-131.4	-0.5	45380.0	44549.0	-831.0	-1.8	
SR	AP-TRANSCO	135.3	135.2	0.0	4193.0	4192.0	-1.0	0.0	6392.0	6392.0	0.0	0.0
	TG - TRANSCO	131.3	128.1	-3.2	4070.0	3970.0	-100.0	-2.5	6870.0	6682.0	-188.0	-2.7
	KPTCL	183.5	178.4	-5.0	5687.0	5531.0	-156.0	-2.7	9481.0	9175.0	-306.0	-3.2
	KSEB	59.5	59.0	-0.5	1845.0	1829.0	-16.0	-0.9	3545.0	3417.0	-128.0	-3.6
	TNEB	255.3	246.7	-8.5	7913.0	7649.0	-264.0	-3.3	12901.0	12149.0	-752.0	-5.8
	PONDICHERRY	5.5	5.5	0.0	172.0	172.0	0.0	0.0	319.0	314.0	-5.0	-1.6
TOTAL	770.3	753.0	-17.3	23880.0	23343.0	-537.0	-2.2	37290.0	36422.0	-868.0	-2.3	
ER	Bihar	43.2	53.7	10.6	1338.0	1666.0	328.0	24.5	2570.0	2734.0	164.0	6.4
	JSEB	22.6	21.4	-1.2	700.0	663.0	-37.0	-5.3	1050.0	1067.0	17.0	1.6
	DVC	55.5	55.1	-0.4	1720.0	1708.0	-12.0	-0.7	2770.0	2630.0	-140.0	-5.1
	Odisha	75.5	63.6	-11.9	2340.0	1972.0	-368.0	-15.7	3720.0	3558.0	-162.0	-4.4
	West Bengal	111.7	98.9	-12.7	3462.0	3067.0	-395.0	-11.4	6670.0	6933.0	263.0	3.9
TOTAL	308.4	292.8	-15.6	9560.0	9076.0	-484.0	-5.1	16409.0	16116.0	-293.0	-1.8	
NER	Arunachal Pradesh	1.9	1.9	0.0	60.0	59.5	-0.5	-0.8	120.1	115.1	-5.0	-4.1
	Assam	21.9	19.4	-2.5	679.6	602.3	-77.3	-11.4	1381.5	1220.0	-161.5	-11.7
	Manipur	2.3	2.3	0.0	72.0	71.1	-0.9	-1.3	150.4	144.0	-6.4	-4.3
	MeSEB	6.2	6.1	-0.1	192.1	187.7	-4.4	-2.3	370.5	343.0	-27.5	-7.4
	Mizoram	1.4	1.4	0.0	43.0	42.3	-0.7	-1.7	90.3	88.0	-2.3	-2.5
	Nagaland	2.0	1.9	-0.1	60.5	58.5	-2.0	-3.4	130.3	123.0	-7.3	-5.6
	Tripura	3.0	2.9	-0.1	92.0	90.0	-2.0	-2.2	245.6	210.0	-35.6	-14.5
TOTAL	38.7	35.8	-2.8	1199.2	1111.3	-87.8	-7.3	2539.8	2253.9	-285.9	-11.3	
ALL INDIA	2833.7	2768.9	-64.8	87844.5	85834.9	-2009.6	-2.3	143999.8	140114.9	-3884.9	-2.7	

9. ENERGY COMPARISON OF January 2015 Vs January 2014

REGION	STATE	Energy Requirement (MU)					Energy Met (MU)				
		Jan-14	Jan-15	Difference	% Change	Average MU/day for Jan-15	Jan-14	Jan-15	Difference	% Change	Average for MU/day Jan -15
NR	Chandigarh	116	124	8	7	4	116	124	8	7	4
	Delhi	2022	2039	16	1	68	2021	2040	19	1	68
	Haryana	3225	3532	307	10	118	3210	3533	323	10	118
	H.P.	765	803	38	5	27	765	804	39	5	27
	J&K	1492	1294	-198	-13	43	1193	1604	411	34	53
	Punjab	2738	2788	51	2	93	2737	2788	52	2	93
	Rajasthan	5801	6320	519	9	211	5797	6320	524	9	211
	U.P.	7928	8311	384	5	277	6882	7211	329	5	240
	Uttarakhand	1046	1109	63	6	37	1031	1127	96	9	38
	NFF/Railway	65	66	1	1	2	65	66	1	1	2
TOTAL	25250	25287	37	0	843	23847	26718	2871	12	891	
WR	Gujarat	7280	7716	436	6	257	7278	7709	432	6	257
	Madhya Pradesh	4961	4815	-146	-3	160	4973	4815	-158	-3	160
	Chhattisgarh	2022	2108	87	4	70	2016	2081	65	3	69
	Maharashtra	11511	11099	-412	-4	370	11181	11003	-179	-2	367
	Goa	234	234	0	0	8	234	234	0	0	8
	D&D	177	170	-7	-4	6	177	170	-7	-4	6
	DNH	457	458	1	0	15	456	458	1	0	15
	ESIL	209	218	9	4	7	209	218	9	4	7
TOTAL	26708	26818	110	0	894	26369	26687	317	1	890	
SR	AP-TRANSCO	8405	4193	-142	-2	135	7265	4192	897	7	140
	TG - TRANSCO		4070			131		3970			132
	KPTCL	5945	5687	-258	-4	190	5155	5531	376	7	184
	KSEB	1847	1845	-2	0	62	1673	1829	156	9	61
	TNEB	7821	7913	92	1	264	6648	7649	1001	15	255
	PONDY	171	172	1	1	6	175	172	-3	-2	6
TOTAL	24188	23880	-308	-1	796	20915	23343	2428	12	778	
ER	Bihar	1275	1338	63	5	45	982	1666	684	70	56
	JSEB	725	700	-25	-3	23	626	663	37	6	22
	DVC	1710	1720	10	1	57	1704	1708	4	0	57
	Odisha	2320	2340	20	1	78	1903	1972	69	4	66
	West Bengal	3400	3462	62	2	115	3288	3067	-221	-7	102
TOTAL	9430	9560	130	1	319	8503	9076	573	7	303	
NER	Arunachal Pradesh	50	60	10	21	2	47	60	13	27	2
	Assam	612	680	67	11	23	572	602	31	5	20
	Manipur	52	72	20	39	2	48	71	23	48	2
	MeSEB	180	192	12	7	6	157	188	30	19	6
	Mizoram	42	43	1	3	1	39	42	3	7	1
	Nagaland	51	61	10	19	2	49	59	10	20	2
	Tripura	93	92	-1	-1	3	92	90	-2	-2	3
TOTAL	1079	1199	121	11	40	1004	1111	108	11	37	
ALL INDIA	86655	86744	89	0	2891	80639	86935	6297	8	2898	

10. DEMAND COMPARISON OF JANUARY 2015 Vs JANUARY 2014

REGION	STATE	Peak Requirement (MW)				Peak Met (MW)			
		Jan-14	Jan-15	Difference	% Change	Jan-14	Jan-15	Difference	% Change
NR	Chandigarh	232	252	20	8.6	232	252	20	8.6
	Delhi	4000	4210	210	5.3	4000	4405	405	10.1
	Haryana	6043	6720	677	11.2	6043	6720	677	11.2
	H.P.	1392	1417	25	1.8	1392	1403	11	0.8
	J&K	2490	2393	-97	-3.9	1991	2006	15	0.8
	Punjab	5329	5296	-33	-0.6	5329	5296	-33	-0.6
	Rajasthan	9977	10179	202	2.0	9936	10179	243	2.4
	U.P.	12885	12024	-861	-6.7	10950	11644	694	6.3
	Uttarakhand	1794	1942	148	8.2	1794	1942	148	8.2
	NFF/Railway	96	100	4	4.2	96	100	4	4.2
WR	Gujarat	11501	12457	956	8	11472	12418	946	8.2
	Madhya Pradesh	9445	9812	367	4	9334	9766	432	4.6
	Chhattisgarh	3183	3372	189	6	3151	3269	118	3.7
	Maharashtra	18928	19006	78	0	17901	18408	507	2.8
	Goa	433	393	-40	-9	433	393	-40	-9.2
	D&D	258	271	13	5.0	258	271	13	5.0
	DNH	654	672	18	2.8	654	672	18	2.8
	ESIL	424	440	16	3.8	424	440	16	3.8
SR	AP-TRANSCO	12358	6392	904	7.3	12349	6392	725	5.9
	TG - TRANSCO		6870				6682		
	KPTCL	9747	9481	-266	-2.7	9055	9175	120	1.3
	KSEB	3484	3545	61	1.8	3342	3417	75	2.2
	TNEB	13475	12901	-574	-4.3	12799	12149	-650	-5.1
	PONDY	318	319	1	0.3	317	314	-3	-0.9
ER	Bihar	2490	2570	80	3.2	2152	2734	582	27.0
	JSEB	1220	1050	-170	-13.9	1046	1067	21	2.0
	DVC	2755	2770	15	0.5	2727	2630	-97	-3.6
	Odisha	3650	3720	70	1.9	3702	3558	-144	-3.9
	West Bengal	6473	6670	197	3.0	6459	6933	474	7.3
NER	Arunachal Pradesh	118	120	2	1.9	116	115	-1	-0.7
	Assam	1089	1381	292	26.8	1079	1220	141	13.1
	Manipur	129	150	21	16.2	129	144	15	11.6
	MeSEB	343	371	28	8.1	330	343	13	3.9
	Mizoram	84	90	6	7.3	82	88	6	7.3
	Nagaland	107	130	24	22.3	106	123	17	16.0
	Tripura	201	246	45	22.3	201	210	9	4.5

11. SCHEDULE AND DRAWAL OF CONSTITUENTS - January 2015

REGION	STATE	SCHEDULE (MU)	ACTUAL DRAWAL (MU)	Over drawal(+)/ Under Drawal(-) (MU)	% OD/UD	SCHEDULE (MU/DAY)	ACTUAL DRAWAL (MU/DAY)	Over drawal(+)/ Under Drawal(-) (MU/DAY)
NR	Chandigarh	116.29	133.48	17.20	14.79	3.75	4.31	0.55
	Delhi	1390.60	1371.50	-19.11	-1.37	44.86	44.24	-0.62
	Haryana	1406.24	1317.89	-88.35	-6.28	45.36	42.51	-2.85
	H.P.	639.04	648.66	9.62	1.51	20.61	20.92	0.31
	J&K	1104.98	1150.34	45.36	4.10	35.64	37.11	1.46
	Punjab	1272.08	1325.60	53.52	4.21	41.03	42.76	1.73
	Rajasthan	2234.35	2326.85	92.50	4.14	72.08	75.06	2.98
	U.P.	2525.66	2307.87	-217.79	-8.62	81.47	74.45	-7.03
	Uttarakhand	781.48	822.25	40.77	5.22	25.21	26.52	1.32
NFF/Railway	42.10	65.74	23.64	56.14	1.36	2.12	0.76	
WR	Gujarat	1468.98	1449.51	-19.47	-1.33	47.39	46.76	-0.63
	Madhya Pradesh	2529.59	2500.91	-28.68	-1.13	81.60	80.67	-0.93
	Maharashtra	3069.69	3113.39	43.70	1.42	99.02	100.43	1.41
	Chhattisgarh	602.98	603.49	0.51	0.08	19.45	19.47	0.02
	Goa	223.08	214.88	-8.20	-3.68	7.20	6.93	-0.26
	D&D	174.39	169.75	-4.64	-2.66	5.63	5.48	-0.15
	D&NH	460.49	457.52	-2.97	-0.64	14.85	14.76	-0.10
ESIL	217.74	217.80	0.06	0.03	7.02	7.03	0.00	
SR	AP TRANSCO	680.10	737.31	57.21	8.41	21.94	23.78	1.85
	TG TRANSCO	2234.58	2323.67	89.09	3.99	72.08	74.96	2.87
	KPTCL	951.81	1040.93	89.12	9.36	30.70	33.58	2.87
	KSEB	1343.35	1410.69	67.34	5.01	43.33	45.51	2.17
	TNEB	3006.88	3054.14	47.26	1.57	97.00	98.52	1.52
	PONDICHERRY	175.68	171.71	-3.97	-2.26	5.67	5.54	-0.13
ER	Bihar	1612.63	1542	-70.36	-4.36	52.02	49.75	-2.27
	JSEB	365.58	363	-3.08	-0.84	11.79	11.69	-0.10
	DVC	-616.46	-617	-0.11	0.02	-19.89	-19.89	0.00
	GRIDCO	574.86	611	36.03	6.27	18.54	19.71	1.16
	WBSEB	553.88	592	38.38	6.93	17.87	19.11	1.24
	Sikkim	37.20	32	-5.50	-14.78	1.20	1.02	-0.18
NER	Arunachal Pradesh	43.26	59.51	16.25	37.57	1.40	1.92	0.52
	Assam	412.99	432.62	19.62	4.75	13.32	13.96	0.63
	Manipur	67.40	71.06	3.66	5.43	2.17	2.29	0.12
	MeSEB	157.12	153.54	-3.58	-2.28	5.07	4.95	-0.12
	Mizoram	31.86	41.16	9.30	29.20	1.03	1.33	0.30
	Nagaland	48.25	55.24	6.99	14.48	1.56	1.78	0.23
	Tripura	11.45	22.05	10.60	92.57	0.37	0.71	0.34

12. INTER REGIONAL EXCHANGES 2014-15

	April'14	May'14	June'14	July'14	Aug'14	Sep'14	Oct'14	Nov'14	Dec'14	Jan'15	Fin. Year 2014-15 Till January 2015
Name of Line											
Import of NR from WR (WR-NR)											
WR - NR 765 kV Gwalior - Agra D/C	1131.41	1094.02	1169.37	1136.35	1056.36	961.21	931.72	954.54	1292.85	1057.08	10784.91
WR - NR HVDC Vindhyachal	226.93	146.02	220.87	76.68	102.45	87.66	42.38	10.07	148.47	37.54	1099.06
WR - NR 400 kV Zerda Kankroli	0.00	0.00	0.00	1.12	0.35	0.00	0.00	0.00	1.73	0.00	3.20
WR - NR 400 kV Zerda Bhinmal	0.00	0.00	0.11	0.11	4.56	0.00	0.00	3.79	36.69	32.25	77.50
WR - NR 220 kV Badod - Kota/ Modak	0.00	0.00	5.46	3.26	6.72	3.34	1.34	8.44	0.00	1.06	29.62
WR - NR 220 kV Auraiya - Malanpur/Mehgaon	0.00	0.00	2.26	0.00	0.00	2.36	0.00	0.00	0.00	0.00	4.61
WR - NR HVDC Mundra - Mohindergarh	1435.93	1407.11	1420.90	1508.24	1425.60	1113.54	1319.67	1446.07	1564.15	37.54	12678.75
Total WR - NR	2794.27	2647.15	2818.96	2725.76	2877.20	2168.12	2295.10	2422.91	3043.89	1421.34	25214.71
Import of NR from ER (ER-NR)											
ER - NR 765 kV Sasaram - Fatehpur	15.63	29.42	61.54	63.42	127.24	60.30	145.50	81.68	56.99	53.90	695.61
ER - WR 765 kV Gaya - Fatehpur	0.00	5.45	7.52	10.10	47.03	119.40	132.67	158.46	187.76	226.04	894.43
ER - WR 765 kV Gaya - Balia	1.80	0.00	2.18	1.89	10.35	4.91	0.00	0.00	2.36	1.63	25.11
ER-NR 400 kV Patna - Balia 2xD/C	199.41	188.18	196.33	216.02	228.67	174.58	306.75	421.44	431.63	469.55	2832.55
ER - NR 400 kV Muzaffarpur - Gorakhpur D/C	60.87	153.36	338.00	356.61	407.36	323.35	309.24	151.68	118.26	28.99	2247.72
ER - NR 400 kV Biharshariff - Balia D/C	73.20	134.72	234.73	161.92	210.72	162.99	169.34	61.64	86.58	4.88	1300.70
ER - NR HVDC Sasaram (Bypass)	214.12	275.04	232.52	300.59	130.61	206.35	247.26	209.57	246.83	156.58	2219.46
ER - NR 220 kV Pusauli - Sahupuri	112.59	109.26	117.30	106.27	99.97	95.07	108.72	71.40	75.01	91.71	987.30
ER - NR 132 kV Sahupuri - Karamnasa	0.00	0.00	0.00	0.00	6.72	15.36	0.96	0.48	1.44	0.96	25.92
ER - NR 132 kV Rihand - Son Nagar	0.00	0.00	0.00	0.00	0.00	-0.54	0.00	0.00	0.00	0.00	-0.54
Total NR - ER	677.62	895.41	1190.11	1216.83	1268.66	1161.78	1420.44	1156.35	1206.84	1034.23	11228.27
Export of NR to WR (NR-WR)											
NR - WR 765 kV Gwalior - Agra D/C	0.00	0.00	0.00	0.00	0.00	0.00	0.00	0.00	0.00	0.00	0.00
NR - WR HVDC Vindhyachal	7.75	36.56	10.16	68.79	110.02	105.84	172.27	189.68	46.66	81.38	829.11
NR - WR 400 kV Zerda Kankroli	180.30	135.80	123.34	131.77	112.67	101.46	145.09	91.68	1.73	38.39	1062.23
NR - WR 400 kV Zerda Bhinmal	133.65	98.67	104.05	114.09	93.08	92.64	97.44	32.12	5.74	4.59	776.06
NR - WR 220 kV Badod - Kota/ Modak	88.03	68.11	90.43	54.24	69.10	31.14	93.79	105.80	57.45	45.25	703.35
NR - WR 220 kV Auraiya - Malanpur/Mehgaon	26.51	28.54	26.76	37.59	50.65	47.78	68.24	70.93	51.64	60.54	469.16
NR - WR HVDC Mundra - Mohindergarh	0.00	0.00	0.00	0.00	0.00	0.00	0.00	0.00	0.00	0.00	0.00
Total NR - WR	436.24	367.68	354.74	406.49	435.52	378.86	576.82	490.22	163.21	230.14	3839.91

Export of NR to ER (NR-ER)												
NR - ER 765 kV Sasaram - Fatehpur	39.73	10.26	1.31	1.06	0.79	0.90	0.00	0.12	6.65	9.88		70.69
NR - ER 765 kV Gaya - Fatehpur	50.11	22.91	1.64	3.28	2.64	4.07	0.00	0.00	7.07	0.00		91.72
NR - ER 765 kV Gaya - Balia	66.02	53.18	20.67	43.56	13.45	39.91	41.91	57.21	41.81	6.20		383.92
NR - ER 400 kV Patna - Balia 2xD/C	0.00	0.00	0.65	0.00	0.00	0.00	0.00	0.00	0.00	0.00		0.65
NR - ER 400 kV Muzaffarpur - Gorakhpur D/C	5.12	1.26	0.00	0.00	0.00	5.63	0.00	0.00	0.00	0.00		18.75
NR - ER 400 kV Biharshariff - Balia D/C	2.38	0.00	0.00	0.00	0.00	0.00	0.00	0.00	0.70	43.46		46.53
NR - ER HVDC Sasaram (Bypass)	25.06	0.70	1.72	0.00	47.93	7.07	5.78	0.00	40.45	8.73		137.46
NR - ER 220 kV Pusauli - Sahupuri	0.00	0.03	0.00	3.28	3.72	0.00	0.00	0.00	2.71	0.00		9.74
NR - ER 132 kV Sahupuri - Karamnasa	0.00	0.94	0.00	-0.50	0.48	2.19	7.88	0.48	4.80	3.84		20.11
NR - ER 132 kV Rihand - Son Nagar	12.54	7.36	3.28	6.11	19.90	23.09	22.81	18.15	22.98	24.49		160.70
Total NR - ER	200.97	96.65	29.27	56.78	88.91	82.84	78.38	75.96	127.16	103.33		940.26
Export of WR to ER (WR-ER)												
WR - ER 765 kV Ranchi - Dharamjaygarh	4.29	72.09	2.90	84.11	112.10	94.49	39.32	39.63	33.01	-15.03		466.92
WR - ER 400 kV Sipat - Ranchi D/C	5.57	97.73	44.48	64.65	69.00	77.39	17.12	19.77	32.53	-19.71		408.53
WR - ER 400 kV Raigarh - Sterlite D/C	0.00	0.00	0.37	79.86	55.03	58.80	17.77	6.50	10.35	-2.45		226.23
WR - ER 400 kV Raigarh - Jharsuguda D/C	2.20	78.59	45.11	134.56	59.72	70.43	37.98	57.39	8.38	-1.91		492.44
WR - ER 220 kV Korba - Budhipadar D/C	0.19	10.23	8.18	4.97	19.97	36.32	4.98	1.15	9.24	-3.58		91.65
WR - ER 220 kV Raigarh - Budhipadar	0.00	0.49	0.08	0.80	6.35	15.72	0.19	0.00	0.26	0.00		23.89
Total WR - ER	7.95	259.13	141.09	368.94	322.17	353.15	117.37	124.44	93.77	-42.68		1745.34
Import of WR from ER (ER - WR)												
ER - WR 765 kV Ranchi - Dharamjaygarh	0.00	0.73	5.28	6.08	4.84	1.84	22.71	18.29	40.38	24.52		124.68
ER - WR 400 kV Sipat - Ranchi D/C	2.42	0.00	2.53	3.75	5.35	2.95	31.44	20.95	22.71	7.66		99.75
ER - WR 400 kV Raigarh - Sterlite D/C	115.86	115.02	172.47	118.86	129.37	147.84	235.79	190.93	229.82	38.70		1494.66
ER - WR 400 kV Raigarh - Jharsuguda D/C	0.00	0.00	13.84	2.72	3.53	3.31	13.38	-2.72	46.38	39.99		120.43
ER - WR 220 kV Korba - Budhipadar D/C	4.66	9.39	12.19	33.53	11.44	4.15	32.28	21.08	9.90	36.22		174.85
ER - WR 220 kV Raigarh - Budhipadar	70.98	63.40	64.54	34.75	33.26	31.17	76.47	89.85	43.75	54.37		562.55
Total ER - WR	193.92	188.55	270.86	199.69	187.79	191.26	412.07	338.39	392.94	201.45		2576.92
Export of ER to NER												
ER - NER 400 kV Binaguri - Bongaigaon D/C	231.89	201.50	128.44	48.77	16.46	7.67	69.79	200.52	271.61	299.51		1476.16
ER - NER 220 kV Birpara - Salakati D/C	41.64	59.03	63.64	25.26	37.33	27.02	44.48	40.57	37.32	31.79		408.08
Total ER - NER	273.52	260.53	192.08	74.03	53.80	34.69	114.27	241.09	308.92	331.30		1884.24
Import of ER from NER (NER - ER)												
NER - ER 400 kV Binaguri - Bongaigaon D/C	0.00	0.00	6.92	34.70	87.32	114.52	15.20	0.00	0.00	0.00		258.67
NER - ER 220 kV Birpara - Salakati D/C	0.00	0.00	0.00	0.46	2.02	8.20	0.03	0.00	0.00	0.00		10.71
Total NER - ER	0.00	0.00	6.92	35.16	89.34	122.73	15.23	0.00	0.00	0.00		269.38

Export of ER to SR (ER - SR)	0.00										
ER - SR HVDC Gazuwaka	534.56	526.50	394.52	488.09	480.65	428.23	182.83	0.00	432.16	522.83	3990.38
ER - SR HVDC Talchar - Kolar	1419.85	1299.16	1345.00	1431.12	924.60	1344.73	1454.94	1463.47	1377.62	1323.53	13384.01
Total ER - SR	1954.41	1825.70	1739.53	1919.21	1405.25	1772.96	1637.77	1463.47	1809.78	1846.36	17374.44
Import of ER from SR (SR - ER)											
SR - ER HVDC Gazuwaka	0.00	0.00	0.00	0.00	0.00	0.00	0.00	0.00	0.00	0.00	0.00
SR - ER HVDC Talchar - Kolar	0.00	0.00	0.00	0.00	0.00	0.00	0.00	0.00	0.00	0.00	0.00
Total SR - ER	0.00	0.00	0.00	0.00	0.00	0.00	0.00	0.00	0.00	0.00	0.00
Export of WR to SR (WR-SR)											
WR - SR HVDC Bhadrawati	691.96	692.54	675.04	727.00	727.87	701.99	732.95	701.52	721.41	736.87	7109.16
WR - SR 765 kV Sholapur - Raichur	78.84	68.83	79.31	118.00	118.73	218.95	225.86	319.22	254.56	242.41	1724.70
Total WR - SR	770.80	761.36	754.35	845.00	846.60	920.94	958.81	1020.74	975.97	979.28	8833.86
Import of WR from SR (SR - WR)											
SR - WR HVDC Bhadrawati	0.00	0.00	0.00	0.00	0.00	0.00	0.00	0.00	0.00	0.00	0.00
SR - WR 765 kV Raichur - Sholapur	35.99	47.17	50.50	51.39	0.56	28.88	30.80	4.71	19.48	18.45	287.91
Total SR - WR	35.99	47.17	50.50	51.39	0.56	28.88	30.80	4.71	19.48	18.45	287.91
TOTAL ALL INDIA	7346	7349	7548	7899	7576	7216	7657	7338	6662	4739	66592.28

12.1 Import of NR from WR & ER during January 2015																				
Date	Import of NR from WR (WR-NR)									Import of NR from ER (ER-NR)										
	WR - NR 765 kV Gwalior - Agra D/C	WR - NR HVDC V'chal	WR - NR 400 kV Zerda- Kankroli	WR - NR 400 kV Zerda- Bhinmal	WR - NR 220 kV Badod - Kota / Modak	WR - NR 220 kV Auraiya - Mehgaon	WR-NR 400 KV Rihand Vindhya	WR - NR HVDC Mundra - M'garh	Total WR - NR	ER - NR 765 kV Sasaram - Fatehpur	ER - WR 765 kV Gaya - Fatehpur	ER - WR 765 kV Gaya Balua	ER-NR 400 kV Patna - Balua 2x2/C	ER - NR 400 kV Muzaffarpur - G'pur D/C	ER - NR 400 kV B'shariff - Balua D/C	ER - NR HVDC Sasaram (Bypass)	ER - NR 220 kV Pusauli - Sahupuri	ER - NR 132 kV Sahupuri - K'nasa	ER - NR 132 kV Rihand - Son Nagar	Total NR -WR
1-Jan-15	42.14	6.41	0.00	0.00	0.00	0.00	6.83	50.78	106.16	0.28	7.61	0.00	10.72	1.19	0.54	11.13	2.44	0.00	0.00	33.91
2-Jan-15	35.44	5.32	0.00	0.00	0.00	0.00	5.32	51.61	97.68	2.31	8.89	0.00	10.72	1.03	0.54	9.15	2.64	0.00	0.00	35.28
3-Jan-15	39.65	4.39	0.00	1.27	0.00	0.00	4.39	50.47	100.16	1.69	7.94	0.00	13.19	0.11	2.24	8.69	2.60	0.00	0.00	36.46
4-Jan-15	39.75	3.85	0.00	1.84	0.00	0.00	3.85	51.53	100.81	1.72	7.75	0.00	12.41	0.34	0.86	9.27	2.72	0.00	0.00	35.06
5-Jan-15	33.55	0.87	0.00	1.41	0.00	0.00	0.87	45.45	82.16	2.39	7.43	0.00	16.61	0.56	0.00	2.45	3.06	0.00	0.00	32.50
6-Jan-15	33.55	0.87	0.00	1.41	0.00	0.00	0.87	45.45	82.16	2.39	7.43	0.00	16.61	0.56	0.00	2.45	3.06	0.00	0.00	32.50
7-Jan-15	33.55	0.87	0.00	1.41	0.00	0.00	0.87	45.45	82.16	2.39	7.43	0.00	16.61	0.56	0.00	2.45	3.06	0.00	0.00	32.50
8-Jan-15	33.55	0.87	0.00	1.41	0.00	0.00	0.87	45.45	82.16	2.39	7.43	0.00	16.61	0.56	0.00	2.45	3.06	0.00	0.00	32.50
9-Jan-15	33.55	0.87	0.00	1.41	0.00	0.00	0.87	45.45	82.16	2.39	7.43	0.00	16.61	0.56	0.00	2.45	3.06	0.00	0.00	32.50
10-Jan-15	33.55	0.87	0.00	1.41	0.00	0.00	0.87	45.45	82.16	2.39	7.43	0.00	16.61	0.56	0.00	2.45	3.06	0.00	0.00	32.50
11-Jan-15	33.55	0.87	0.00	1.41	0.00	0.00	0.87	45.45	82.16	2.39	7.43	0.00	16.61	0.56	0.00	2.45	3.06	0.00	0.00	32.50
12-Jan-15	33.55	0.87	0.00	1.41	0.00	0.00	0.87	45.45	82.16	2.39	7.43	0.00	16.61	0.56	0.00	2.45	3.06	0.00	0.00	32.50
13-Jan-15	33.55	0.87	0.00	1.41	0.00	0.00	0.87	45.45	82.16	2.39	7.43	0.00	16.61	0.56	0.00	2.45	3.06	0.00	0.00	32.50
14-Jan-15	33.55	0.87	0.00	1.41	0.00	0.00	0.87	45.45	82.16	2.39	7.43	0.00	16.61	0.56	0.00	2.45	3.06	0.00	0.00	32.50
15-Jan-15	33.55	0.87	0.00	1.41	0.00	0.00	0.87	45.45	82.16	2.39	7.43	0.00	16.61	0.56	0.00	2.45	3.06	0.00	0.00	32.50
16-Jan-15	28.87	2.07	0.00	1.04	0.00	0.00	2.07	47.37	81.42	0.60	9.39	0.00	16.95	2.47	0.00	2.44	2.95	0.00	0.00	34.80
17-Jan-15	27.33	1.81	0.00	1.33	1.06	0.00	1.81	42.66	76.01	0.60	9.39	0.00	17.81	2.33	0.00	2.40	2.95	0.00	0.00	35.48
18-Jan-15	20.76	1.12	0.00	1.84	0.00	0.00	1.12	40.83	65.67	2.43	10.24	0.00	17.69	1.50	0.00	2.44	3.00	0.00	0.00	37.30
19-Jan-15	37.78	0.08	0.00	1.08	0.00	0.00	0.08	42.82	81.84	3.76	9.44	0.02	17.99	0.92	0.00	2.44	3.07	0.00	0.00	37.64
20-Jan-15	28.17	1.34	0.00	0.00	0.00	0.00	1.34	48.37	79.21	5.04	9.55	0.60	15.16	2.46	0.42	1.17	3.02	0.00	0.00	37.41
21-Jan-15	28.17	0.65	0.00	0.00	0.00	0.00	0.65	48.36	77.82	5.04	9.55	0.52	12.96	2.05	0.27	3.73	2.98	0.48	0.00	37.58
22-Jan-15	29.96	0.65	0.00	0.00	0.00	0.00	0.65	0.00	31.25	0.74	7.01	0.22	19.13	2.05	0.00	7.37	3.02	0.00	0.00	39.54
23-Jan-15	32.86	0.00	0.00	0.31	0.00	0.00	0.00	44.04	77.22	0.71	7.04	0.00	11.99	0.00	0.00	7.28	3.10	0.00	0.00	30.12
24-Jan-15	34.34	0.36	0.00	1.06	0.00	0.00	0.36	49.00	85.12	0.62	6.91	0.00	12.35	1.09	0.00	7.28	3.03	0.48	0.00	31.76
25-Jan-15	35.28	0.74	0.00	1.03	0.00	0.00	0.74	46.91	84.71	0.00	4.98	0.05	7.92	0.00	0.00	7.23	3.05	0.00	0.00	23.22
26-Jan-15	33.38	0.23	0.00	1.00	0.00	0.00	0.23	48.37	83.21	0.00	2.89	0.00	11.37	3.50	0.00	7.24	3.35	0.00	0.00	28.34
27-Jan-15	39.24	0.00	0.00	1.20	0.00	0.00	0.00	48.62	89.07	0.00	3.90	0.00	13.63	1.73	0.00	7.66	2.83	0.00	0.00	29.75
28-Jan-15	37.77	0.00	0.00	1.20	0.00	0.00	0.00	48.37	87.35	0.00	4.77	0.00	15.88	0.00	0.00	7.66	2.83	0.00	0.00	31.14
29-Jan-15	38.54	0.00	0.00	1.20	0.00	0.00	0.00	49.48	89.22	0.00	5.73	0.00	15.51	0.00	0.00	9.00	2.83	0.00	0.00	33.07
30-Jan-15	42.68	0.00	0.00	1.33	0.00	0.00	0.00	55.33	99.34	0.00	5.63	0.21	15.17	0.00	0.00	9.05	2.77	0.00	0.00	32.82
31-Jan-15	42.68	0.00	0.00	0.00	0.00	0.00	0.00	55.61	98.30	0.00	4.49	0.00	18.34	0.18	0.00	8.97	2.71	0.00	0.00	34.69
Total	1063.79	38.63	0.00	32.25	1.06	0.00	39.05	1420.52	2595.28	51.87	224.76	1.63	469.55	29.14	4.88	158.56	91.51	0.96	0.00	1032.86

Date	12.2 Export of NR to WR & ER during January 2015																			
	Export of NR to WR (NR- WR)								Export of NR to ER (NR- ER)											
	WR - NR 765 kV Gwalior - Agra D/C	WR - NR HVDC V'chal	WR - NR 400 kV Zerda- Kankroli	WR - NR 400 kV Zerda- Bhinmal	WR - NR 220 kV Badod - Kota / Modak	WR - NR 220 kV Auraiya - Malanpur / Mehgaon	WR - NR HVDC Mundra - M'garh	Total WR - NR	ER - NR 765 kV Sasaram - Fatehpur	ER - WR 765 kV Gaya - Fatehpur	ER - WR 765 kV Gaya Balua	ER-NR 400 kV Patna - Balua 2xD/C	ER - NR 400 kV Muzaffarpur - G'pur D/C	ER - NR 400 kV B'shariff - Balua D/C	ER - NR HVDC Sasaram (Byepass)	ER - NR 220 kV Pusauli - Sahupuri	ER - NR 132 kV Sahupuri - K'nasa	ER - NR 132 kV Rihand - Son Nagar	ER-NR 765 KV Gaya- Balua	Total NR -WR
1-Jan-15	0.00	0.30	2.97	0.48	0.45	2.05	0.00	6.25	0.00	0.00	0.00	0.00	0.00	0.11	0.00	0.96	0.78	0	1.85	
2-Jan-15	0.00	0.30	2.97	0.48	0.45	2.05	0.00	6.25	0.00	0.00	0.00	0.00	0.00	0.11	0.00	0.96	0.78	0	1.85	
3-Jan-15	0.00	1.45	1.37	0.00	0.65	2.18	0.00	5.64	0.00	0.00	0.00	0.00	0.00	0.00	0.00	0.48	0.80	0	1.28	
4-Jan-15	0.00	0.20	0.49	0.00	0.73	1.97	0.00	3.39	0.00	0.00	0.00	0.00	0.00	0.00	0.00	0.00	0.78	0	0.78	
5-Jan-15	0.00	0.73	0.67	0.00	0.71	2.19	0.00	4.30	0.00	0.00	0.20	0.00	0.00	1.32	0.00	0.00	0.81	0.2	2.52	
6-Jan-15	0.00	0.73	0.67	0.00	0.71	2.19	0.00	4.30	0.00	0.00	0.20	0.00	0.00	1.32	0.00	0.00	0.81	0.2	2.52	
7-Jan-15	0.00	0.73	0.67	0.00	0.71	2.19	0.00	4.30	0.00	0.00	0.20	0.00	0.00	1.32	0.00	0.00	0.81	0.2	2.52	
8-Jan-15	0.00	0.73	0.67	0.00	0.71	2.19	0.00	4.30	0.00	0.00	0.20	0.00	0.00	1.32	0.00	0.00	0.81	0.2	2.52	
9-Jan-15	0.00	0.73	0.67	0.00	0.71	2.19	0.00	4.30	0.00	0.00	0.20	0.00	0.00	1.32	0.00	0.00	0.81	0.2	2.52	
10-Jan-15	0.00	0.73	0.67	0.00	0.71	2.19	0.00	4.30	0.00	0.00	0.20	0.00	0.00	1.32	0.00	0.00	0.81	0.2	2.52	
11-Jan-15	0.00	0.73	0.67	0.00	0.71	2.19	0.00	4.30	0.00	0.00	0.20	0.00	0.00	1.32	0.00	0.00	0.81	0.2	2.52	
12-Jan-15	0.00	0.73	0.67	0.00	0.71	2.19	0.00	4.30	0.00	0.00	0.20	0.00	0.00	1.32	0.00	0.00	0.81	0.2	2.52	
13-Jan-15	0.00	0.73	0.67	0.00	0.71	2.19	0.00	4.30	0.00	0.00	0.20	0.00	0.00	1.32	0.00	0.00	0.81	0.2	2.52	
14-Jan-15	0.00	0.73	0.67	0.00	0.71	2.19	0.00	4.30	0.00	0.00	0.20	0.00	0.00	1.32	0.00	0.00	0.81	0.2	2.52	
15-Jan-15	0.00	0.73	0.67	0.00	0.71	2.19	0.00	4.30	0.00	0.00	0.20	0.00	0.00	1.32	0.00	0.00	0.81	0.2	2.52	
16-Jan-15	0.00	-1.57	1.03	0.00	0.55	2.90	0.00	2.91	0.00	0.00	0.54	0.00	0.00	2.04	0.00	0.00	0.00	0.54	3.12	
17-Jan-15	0.00	-3.20	0.75	0.00	0.30	3.25	0.00	1.11	0.00	0.00	0.07	0.00	0.00	1.14	0.00	0.00	0.00	0.07	1.28	
18-Jan-15	0.00	2.25	0.41	0.00	0.82	1.23	0.00	4.71	0.00	0.00	0.01	0.00	0.00	0.94	0.00	0.00	0.92	0.01	1.88	
19-Jan-15	0.00	5.40	1.09	0.00	1.20	1.00	0.00	8.69	0.00	0.00	0.00	0.00	0.00	1.39	0.00	0.00	0.89	0	2.28	
20-Jan-15	0.00	1.50	3.11	0.82	1.30	2.66	0.00	9.39	0.00	0.00	0.00	0.00	0.00	4.38	0.00	0.48	0.93	0	5.79	
21-Jan-15	0.00	0.56	3.11	0.82	1.08	2.84	0.00	8.40	0.00	0.00	0.00	0.00	0.00	4.14	0.00	0.96	0.91	0	6.01	
22-Jan-15	0.00	0.56	3.87	1.72	2.21	1.78	0.00	10.13	0.00	0.00	0.00	0.00	1.53	1.80	0.00	0.00	0.90	0	4.23	
23-Jan-15	0.00	4.10	1.81	0.00	2.25	1.78	0.00	9.94	0.00	0.00	0.66	0.00	2.60	0.30	0.00	0.00	0.92	0.66	5.14	
24-Jan-15	0.00	5.45	1.27	0.00	1.54	1.75	0.00	10.00	0.00	0.00	0.14	0.00	0.00	2.14	0.00	0.00	0.88	0.14	3.30	
25-Jan-15	0.00	5.34	1.23	0.00	6.36	1.66	0.00	14.59	1.10	0.00	0.00	0.00	1.99	2.37	0.00	0.00	0.85	0	6.32	
26-Jan-15	0.00	3.88	1.16	0.00	1.10	1.63	0.00	7.77	3.13	0.00	0.79	0.00	0.00	4.71	0.00	0.00	0.89	0.79	10.32	
27-Jan-15	0.00	8.72	0.89	0.00	1.30	1.28	0.00	12.19	2.00	0.00	0.71	0.00	0.00	4.00	0.00	0.00	0.84	0.71	8.25	
28-Jan-15	0.00	11.42	0.02	0.00	0.39	0.49	0.00	12.32	1.09	0.00	0.30	0.00	0.24	2.95	0.00	0.00	0.88	0.3	5.76	
29-Jan-15	0.00	7.85	0.07	0.00	0.12	0.61	0.00	8.64	0.39	0.00	0.19	0.00	0.24	2.01	0.00	0.00	0.79	0.19	3.80	
30-Jan-15	0.00	9.09	0.86	0.00	5.20	1.69	0.00	16.84	0.63	0.00	0.00	0.00	0.15	1.83	0.00	0.00	0.94	0	3.54	
31-Jan-15	0.00	9.76	2.52	0.26	9.47	1.70	0.00	23.71	1.54	0.00	0.64	0.00	0.00	1.35	0.00	0.00	0.95	0.64	5.12	
Total	0.00	81.38	38.39	4.59	45.25	60.54	0.00	230.14	9.88	0.00	6.20	0.00	6.74	43.46	8.73	0.00	3.84	24.49	6.25	109.58

Date	12.3 Import - Export of ER with WR & NER during January 2015																			
	Export of WR to ER (WR-ER)							Import of WR from ER (ER - WR)							Export of ER to NER (ER - NER)			Import of ER from NER (NER - ER)		
	WR - ER 765 kV Dharamjaygarh - Ranchi D/C	WR - ER 400 kV Sipat - Ranchi D/C	WR - ER 400 kV Raigarh - Sterlite D/C	WR - ER 400 kV Raigarh - Jharsuguda D/C	WR - ER 220 kV Korba - Budhipadar D/C	WR - ER 220 kV Raigarh - Budhipadar	Total WR - ER	WR - ER 765 kV Dharamjaygarh - Ranchi D/C	ER - WR 400 kV Sipat - Ranchi D/C	ER - WR 400 kV Raigarh - Sterlite D/C	ER - WR 400 kV Raigarh - Jharsuguda D/C	ER - WR 220 kV Korba - Budhipadar D/C	ER - WR 220 kV Raigarh - Budhipadar	Total ER - WR	ER - NER 400 kV Binaguri - Bongaigaon D/C	ER - NER 220 kV Birpara - Salakati D/C	Total ER - NER	NER - ER 400 kV Binaguri - Bongaigaon 2xD/C	NER - ER 220 kV Birpara - Salakati D/C	Total NER - ER
1-Jan-15	3.98	1.23	0.00	0.00	0.92	0.00	6.12	0.00	0.00	0.4	3.06	0.21	0.00	3.69	10.35	1.46	11.80	0.00	0.00	0.00
2-Jan-15	0.00	0.00	0.00	0.00	0.79	0.00	0.79	1.56	0.72	1.5	1.93	0.00	0.00	5.69	10.00	1.40	11.39	0.00	0.00	0.00
3-Jan-15	0.00	0.00	0.00	0.00	0.00	0.00	0.00	0.23	0.56	1.6	1.98	1.35	0.00	5.73	9.83	1.44	11.27	0.00	0.00	0.00
4-Jan-15	1.80	0.43	0.00	0.00	0.00	0.00	2.23	0.00	0.00	1.2	2.71	1.44	0.00	5.37	7.49	1.10	8.59	0.00	0.00	0.00
5-Jan-15	0.00	0.27	0.00	0.00	0.00	0.00	0.27	0.57	0.00	1.4	3.30	2.08	0.00	7.34	7.74	1.05	8.80	0.00	0.00	0.00
6-Jan-15	0.51	1.35	0.00	0.00	0.14	0.00	1.99	0.00	0.00	0.9	0.82	0.82	0.00	2.54	8.81	1.11	9.91	0.00	0.00	0.00
7-Jan-15	0.80	0.99	0.00	0.00	0.05	0.00	1.83	0.00	0.00	0.7	1.15	0.65	0.00	2.51	9.01	1.19	10.20	0.00	0.00	0.00
8-Jan-15	0.00	0.00	0.00	0.00	0.02	0.00	0.02	1.27	2.16	0.4	0.46	1.42	0.00	5.67	9.22	1.34	10.56	0.00	0.00	0.00
9-Jan-15	1.08	2.58	0.00	0.00	0.01	0.00	3.67	0.00	0.00	0.0	0.43	1.51	0.00	1.98	9.84	1.30	11.14	0.00	0.00	0.00
10-Jan-15	0.50	0.91	0.00	0.00	0.00	0.00	1.41	0.00	0.00	0.9	1.16	1.83	0.00	3.90	9.81	1.20	11.01	0.00	0.00	0.00
11-Jan-15	0.26	0.67	0.00	0.00	0.00	0.00	0.93	0.00	0.00	0.6	0.86	1.86	0.00	3.36	11.02	1.67	12.69	0.00	0.00	0.00
12-Jan-15	0.17	0.30	0.00	0.00	0.03	0.00	0.50	0.00	0.00	0.3	0.46	2.16	0.00	2.96	10.98	1.58	12.55	0.00	0.00	0.00
13-Jan-15	0.00	0.13	0.00	0.00	0.03	0.00	0.16	0.73	0.00	0.6	0.49	2.39	0.00	4.20	11.83	1.71	13.55	0.00	0.00	0.00
14-Jan-15	0.00	0.23	0.00	0.00	0.01	0.00	0.24	0.50	0.00	0.3	0.36	2.12	0.00	3.26	10.51	1.33	11.84	0.00	0.00	0.00
15-Jan-15	0.00	0.30	0.00	0.00	0.10	0.00	0.40	0.49	0.00	0.7	0.91	1.06	0.39	3.56	11.85	1.04	12.88	0.00	0.00	0.00
16-Jan-15	0.00	0.00	0.00	0.00	0.27	0.00	0.27	3.14	0.77	2.9	2.21	0.71	3.06	12.77	6.07	0.99	7.05	0.00	0.00	0.00
17-Jan-15	0.00	0.00	0.00	0.00	0.02	0.00	0.02	4.96	1.17	4.9	3.57	1.35	3.57	19.53	11.27	0.66	11.93	0.00	0.00	0.00
18-Jan-15	0.00	0.00	0.00	0.00	0.00	0.00	0.00	5.48	2.04	5.3	4.09	1.15	3.38	21.40	8.04	0.55	8.59	0.00	0.00	0.00
19-Jan-15	0.00	0.00	0.00	0.00	0.00	0.00	0.00	3.63	0.30	3.6	2.81	0.06	1.93	12.32	9.49	0.68	10.17	0.00	0.00	0.00
20-Jan-15	0.00	0.00	0.00	0.00	0.01	0.00	0.01	2.24	1.42	2.0	1.31	0.79	2.78	10.54	9.13	0.67	9.80	0.00	0.00	0.00
21-Jan-15	0.00	0.00	0.00	0.00	0.02	0.00	0.02	0.72	0.28	2.1	0.97	1.82	3.63	9.51	10.19	0.80	10.99	0.00	0.00	0.00
22-Jan-15	0.00	0.00	0.00	0.00	0.01	0.00	0.01	0.00	1.42	2.0	1.05	1.60	3.97	10.04	10.66	0.99	11.64	0.00	0.00	0.00
23-Jan-15	0.15	0.00	0.00	0.00	0.00	0.00	0.15	0.00	1.13	1.8	1.19	1.61	3.86	9.56	10.02	0.83	10.86	0.00	0.00	0.00
24-Jan-15	0.00	0.91	0.00	0.00	0.72	0.00	1.63	0.85	0.00	1.4	1.44	0.86	4.18	8.71	9.70	0.92	10.62	0.00	0.00	0.00
25-Jan-15	0.00	1.55	0.00	0.00	0.15	0.00	1.70	0.70	0.00	0.6	0.60	0.31	3.22	5.46	9.37	0.75	10.12	0.00	0.00	0.00
26-Jan-15	1.68	2.07	1.39	0.81	0.29	0.00	6.24	0.00	0.00	0.0	0.00	0.00	2.86	2.86	9.33	0.75	10.08	0.00	0.00	0.00
27-Jan-15	1.68	2.07	0.66	0.77	0.00	0.00	5.18	0.00	0.00	0.0	0.00	0.64	3.52	4.16	8.30	0.84	9.14	0.00	0.00	0.00
28-Jan-15	0.84	1.23	0.00	0.00	0.00	0.00	2.07	0.00	0.00	0.2	0.27	1.06	3.44	4.93	9.91	0.58	10.49	0.00	0.00	0.00
29-Jan-15	0.13	0.59	0.00	0.00	0.00	0.00	0.72	0.00	0.00	0.4	0.39	1.44	3.50	5.71	10.19	0.63	10.82	0.00	0.00	0.00
30-Jan-15	0.50	0.71	0.15	0.00	0.00	0.00	1.35	0.00	0.00	0.0	0.03	1.28	3.56	4.87	9.65	0.57	10.22	0.00	0.00	0.00
31-Jan-15	0.96	1.20	0.25	0.33	0.02	0.00	2.75	0.00	0.00	0.0	0.00	0.63	3.53	4.16	9.90	0.68	10.58	0.00	0.00	0.00
Total	15.03	19.71	2.45	1.91	3.58	0.00	42.68	27.07	11.98	38.70	39.99	36.22	54.37	208.32	299.51	31.79	331.30	0.00	0.00	0.00

Date	12.4 Import and Export of SR with ER & WR during January 2015											
	Export of ER to SR (ER - SR)			Import of ER from SR (SR - ER)			Export of WR to SR (WR-SR)			Import of WR from SR (SR - WR)		
	ER - SR HVDC Gazuwaka	ER - SR HVDC Talchar -Kolar	Total ER - SR	SR - ER HVDC Gazuwaka	SR - ER HVDC Talchar -	Total SR - ER	WR - SR HVDC Bhadrawati	WR - SR 765 kV Sholapur - Raichur	Total WR - SR	SR - WR HVDC Bhadrawati	SR - WR 765 kV Raichur - Sholapur	Total SR - WR
1-Jan-15	15.49	48.10	63.59	0.00	0.00	0.00	23.74	11.11	34.85	0.00	0.02	0.02
2-Jan-15	17.40	45.88	63.28	0.00	0.00	0.00	23.78	14.71	38.49	0.00	0.00	0.00
3-Jan-15	14.58	45.43	60.01	0.00	0.00	0.00	23.77	10.42	34.19	0.00	0.01	0.01
4-Jan-15	14.55	47.29	61.85	0.00	0.00	0.00	23.75	11.46	35.21	0.00	0.01	0.01
5-Jan-15	14.61	47.17	61.79	0.00	0.00	0.00	23.74	10.36	34.11	0.00	0.05	0.05
6-Jan-15	14.55	46.73	61.29	0.00	0.00	0.00	23.79	10.46	34.25	0.00	0.10	0.10
7-Jan-15	16.37	48.24	64.61	0.00	0.00	0.00	23.78	11.39	35.17	0.00	0.03	0.03
8-Jan-15	17.92	46.17	64.09	0.00	0.00	0.00	23.51	9.86	33.38	0.00	0.00	0.00
9-Jan-15	18.23	48.12	66.35	0.00	0.00	0.00	23.80	9.54	33.34	0.00	0.02	0.02
10-Jan-15	18.30	44.56	62.86	0.00	0.00	0.00	23.79	6.66	30.45	0.00	0.42	0.42
11-Jan-15	18.01	46.14	64.15	0.00	0.00	0.00	23.73	3.17	26.90	0.00	3.65	3.65
12-Jan-15	18.19	38.95	57.14	0.00	0.00	0.00	23.77	5.50	29.27	0.00	0.61	0.61
13-Jan-15	18.19	43.89	62.09	0.00	0.00	0.00	23.74	8.03	31.77	0.00	0.45	0.45
14-Jan-15	18.32	47.67	65.98	0.00	0.00	0.00	23.78	9.45	33.23	0.00	0.23	0.23
15-Jan-15	16.97	45.88	62.85	0.00	0.00	0.00	23.75	3.40	27.15	0.00	1.46	1.46
16-Jan-15	17.17	34.30	51.47	0.00	0.00	0.00	23.76	5.16	28.91	0.00	0.96	0.96
17-Jan-15	19.78	8.60	28.39	0.00	0.00	0.00	23.75	7.80	31.55	0.00	0.36	0.36
18-Jan-15	20.04	3.95	23.99	0.00	0.00	0.00	23.77	8.30	32.07	0.00	0.11	0.11
19-Jan-15	18.12	26.04	44.15	0.00	0.00	0.00	23.78	6.80	30.58	0.00	0.49	0.49
20-Jan-15	17.02	44.03	61.05	0.00	0.00	0.00	23.83	3.55	27.37	0.00	1.61	1.61
21-Jan-15	14.32	48.15	62.47	0.00	0.00	0.00	23.79	3.82	27.61	0.00	0.61	0.61
22-Jan-15	16.35	45.04	61.39	0.00	0.00	0.00	23.81	5.67	29.48	0.00	1.53	1.53
23-Jan-15	16.98	47.67	64.65	0.00	0.00	0.00	23.81	2.40	26.21	0.00	1.88	1.88
24-Jan-15	16.95	49.09	66.04	0.00	0.00	0.00	23.91	9.15	33.06	0.00	0.18	0.18
25-Jan-15	18.04	48.09	66.13	0.00	0.00	0.00	23.79	4.87	28.66	0.00	1.72	1.72
26-Jan-15	16.55	47.66	64.21	0.00	0.00	0.00	23.70	5.85	29.54	0.00	1.24	1.24
27-Jan-15	15.63	42.97	58.60	0.00	0.00	0.00	23.71	5.45	29.16	0.00	0.45	0.45
28-Jan-15	15.62	45.64	61.25	0.00	0.00	0.00	23.77	8.59	32.36	0.00	0.13	0.13
29-Jan-15	15.63	47.66	63.29	0.00	0.00	0.00	23.81	10.90	34.71	0.00	0.00	0.00
30-Jan-15	16.08	47.37	63.45	0.00	0.00	0.00	23.83	10.18	34.00	0.00	0.02	0.02
31-Jan-15	16.87	47.03	63.90	0.00	0.00	0.00	23.82	8.42	32.24	0.00	0.10	0.10
Total	522.83	1323.53	1846.36	0.00	0.00	0.00	736.87	242.41	979.28	0.00	18.45	18.45

13. भूटान , नेपाल एवं बांग्लादेश के साथ अंतरराष्ट्रीय विद्युत विनिमय
INTERNATIONAL EXCHANGE WITH BHUTAN, NEPAL AND BANGLADESH

अप्रैल 2014 से जनवरी 2015 April 2014 to January 2015

अंतरराष्ट्रीय विद्युत विनिमय [भारत से दूसरे देश को आयात (+) / निर्यात (-)]
Exchange (Import=(+ve) /Export =(-ve))

Transnational

माह MONTH	भूटान BHUTAN	नेपाल NEPAL	बांग्लादेश BANGLADESH
	Energy Exchange (In MU)	Energy Exchange (In MU)	Energy Exchange (In MU)
अप्रैल 2014 APR'14	78.02	-79.85	-276.56
मई 2014 MAY'14	271.28	-76.50	-273.69
जून 2014 JUN'14	586.46	-65.04	-282.55
जुलाई 2014 JULY 14	988.60	-66.50	-290.60
अगस्त 2014 AUG 2014	1003.78	-65.26	-269.45
सितम्बर 2014 SEP 2014	979.83	-72.10	-272.36
अक्तूबर 2014 OCT 2014	607.90	-66.90	-310.50
नवम्बर 2014 NOV 2014	243.78	-75.56	-225.18
दिसम्बर 2014 DEC 2014	135.68	-107.65	-214.24
जनवरी 2014 JAN 2014	80.81	-109.31	-242.86
कुल Total	4976.14	-784.67	-2657.98

**14. एसटीओए (द्विपक्षीय एवं सामूहिक) एवं डी एस एम बिलिंग का ब्योरा – माह जनवरी 2015
STOA (BILATERAL AND COLLECTIVE) & DSM BILLING DETAILS- January 2015**

द्विपक्षीय एसटीओए BILATERAL SHORT TERM OPEN ACCESS

जनवरी 2015 January 2015			April'14- January'15	
क्षे.भा.प्रे.के. का नाम Name of RLDC	लेन - देनों की संख्या No. of Transactions	अनुमोदित ऊर्जा (मि.यु.) Energy Units Approved(MU)	लेन - देनों की संख्या No. of Transactions	अनुमोदित ऊर्जा (मि.यु.) Energy Approved (MU)
ऊ.क्षे. NR	298	2116	4412	21499
प.क्षे. WR	338	844	2597	7764
द.क्षे. SR	231	1174	2453	10964
पू.क्षे. ER	62	475	1422	8048
पूर्वोत्तर क्षे. NER	20	115	233	686
कुल TOTAL	949	4724	11117	48961

एसटीओए SHORT TERM OPEN ACCESS

माह MONTH	सामूहिक एसटीओए Collective STOA		द्विपक्षीय एसटीओए Bilateral STOA	
	क्रैताओं / विक्रेताओं की सं. NO. of Buyers/Sellers	अनुमोदित ऊर्जा (मि.यु.) Approved Energy (MU)	क्रैताओं / विक्रेताओं की सं. NO. of Buyers/Sellers	अनुमोदित ऊर्जा (मि.यु.) Approved Energy (MU)
अप्रैल 2014 APR'14	2015	2143	783	3765
मई 2014 MAY'14	1962	2383	930	3872
जून 2014 JUN'14	2123	2643	1058	4719
जुलाई 2014 JUL 2014	2240	2351	1110	5556
अगस्त 2014 AUG 2014	2106	2522	1244	5589
सितम्बर 2014 Sep 2014	2550	2073	1201	4934
अक्टूबर 2014 Oct 2014	2143	2800	1005	3257
नवम्बर 2014 Nov 2014	2098	2143	733	3646
दिसम्बर 2014 Dec 2014	2330	2200	1063	4672
जनवरी 2015 Jan'2015	2334	2375	949	4723
कुल TOTAL	21901	23633	10076	44734

मासिक डी एस एम बिलिंग का ब्योरा 2014-15
MONTHLY DSM BILLING DETAILS 2014-15

अंतिम आकड़े
Provisional data
subject to change

करोड़ रु. में (RS. IN CRORES)

क्षेत्र REGION	उत्तरी क्षेत्र NORTH	पश्चिमी क्षेत्र WEST	दक्षिणी क्षेत्र SOUTH	पूर्वी क्षेत्र EAST	पूर्वोत्तर क्षेत्र NORTH EAST
29/12/2014 to 04/01/2015	41.98	29.42	9.16	25.86	2.95
05/01/2015 to 11/01/2015	53.14	31.59	10.63	26.90	3.33
12/01/2015 to 18/01/2015	48.57	31.87	17.91	31.85	3.98
19/01/2015 to 25/01/2015	47.82	25.18	9.39	34.75	3.29

15. पावर मार्केट की सूचना (स्रोत : आई.ई.एक्स. एवं पी.एक्स.आई.एल.)					POWER
MARKET INFORMATION (Source IEX & PXIL)					
पावर एक्स्चेंज के माध्यम से विनिमय - माह जनवरी 2015					
EXCHANGES THROUGH POWER EXCHANGES - JANUARY 2015					
क्र. स. S. No.	क्षेत्रीय ईकाई Regional Entity	क्षेत्र Region	पावर एक्स्चेंज के माध्यम से (मि.यु. मे) Through Power Exchange in MU		
			विक्रय Sale	क्रय Purchase	
1	पंजाब Punjab	उत्तरी क्षेत्र NR	0.00	62.36	
2	हरियाणा Haryana		65.64	74.44	
3	राजस्थान Rajasthan		24.63	465.70	
4	दिल्ली Delhi		24.54	134.72	
5	उत्तर प्रदेश Uttar Pradesh		0.00	1.00	
6	उत्तराखंड Uttarakhand		5.06	247.73	
7	हिमाचल प्रदेश Himachal Pradesh		91.54	10.99	
8	जम्मू और कश्मीर J & K		5.62	82.18	
9	केंद्र शासित चंडीगढ़ UT Chandigarh		0.00	14.80	
10	ए डी हाइड्रो AD Hydro		11.20	0.00	
11	करचम वांगतू KW		45.84	0.00	
12	श्री सीमेंट Shree Cement		52.44	0.00	
13	नाथपा झाकरी Nathpa Jhakri		4.43	0.00	
14	बैरासूल Baira Siul HEP(BS0)		0.00	0.00	
15	चमेरा -1 Chamera-I HEP(CM1)		0.00	0.00	
16	चमेरा -2 Chamera-II HEP(CM2)		0.00	0.00	
17	धौलीगंगा Dhauliganga HEP(DGO)		0.00	0.00	
18	धौलीगंगा Dulahasti HEP(DUO)		0.00	0.00	
19	सलाल Salal HEP(SLO)		0.00	0.00	
20	सेवा -2 Sewa-II NHPC(SW2)		0.00	0.00	
21	टनकपुर Tanakpur HEP(TPO)		0.00	0.00	
22	उरी Uri HEP(UR0)		0.00	0.00	
23	लांको बुधिल LANCO Budhil		0.30	0.00	
24	चमेरा-3 chamera 3		0.00	0.00	
25	अदानी एचवीडीसी ADANI HVDC(NORGUO)		0.00	0.00	
26	मलाना MALANA		0.00	0.00	
27	उरी-II Uri-II HEP(UR2)		0.00	0.00	
28	मध्य प्रदेश MP	पश्चिमी क्षेत्र WR	207.13	76.74	
29	महाराष्ट्र Maharashtra		143.95	145.43	
30	गुजरात Gujarat		118.45	292.15	
31	छत्तीसगढ़ Chattisgarh		142.55	5.26	
32	गोवा Goa		28.10	1.16	
33	दमन और दीव Daman and Diu		0.00	27.94	
34	दादरा और नगर हवेली Dadra & Nagar Haveli		0.00	12.10	
35	जिंदल JD		182.41	0.00	
36	लांको अमरकंटक LANCO AMK		0.00	0.00	
37	आर्यन कोल ACB India Limited		70.49	0.00	
38	जिंदल स्टील एंड पावर Jindal Steel and Power Ltd		160.09	0.00	
39	बालको -2 Balco-II		0.00	56.20	
40	स्टरलाइट Sterlite(w3rse0)		142.51	0.00	
41	एमको EMCO		1.92	0.00	
42	वन्दना विद्युत VANDANA VIDYUT		0.86	0.00	
43	एस्सार पावर ESSAR POWER		0.00	0.00	
44	एस्सार स्टील ESSAR STEEL		0.00	83.59	
45	के एस के महानदी KSK Mahanadi		0.00	0.00	
46	जिंदल स्टेज -II Jindal Stg-II		76.44	0.00	
47	कोरबा (प.) Korba(W) Comp. Ltd.		18.18	0.00	
48	डी बी पावर D B Power		0.00	0.00	
49	धारीवाल Dhariwal		0.00	0.00	
50	जे पी निगी Jaypee Nigire		103.67	0.00	
51	जी एम आर छत्तीसगढ़ GMR Chhattisgarh		0.00	0.32	
52	डी जीईएन मेगा पावर DGEN Mega Power		0.07	0.00	

15. पावर मार्केट की सूचना (स्रोत : आई.ई.एक्स. एवं पी.एक्स.आई.एल.)					POWER
MARKET INFORMATION (Source IEX & PXIL)					
पावर एक्स्चेंज के माध्यम से विनिमय - माह जनवरी 2015					
EXCHANGES THROUGH POWER EXCHANGES - JANUARY 2015					
क्र. स. S. No.	क्षेत्रीय ईकाई Regional Entity	क्षेत्र Region	पावर एक्स्चेंज के माध्यम से (मि.यु. मे) Through Power Exchange in MU		
			विक्रय Sale	क्रय Purchase	
53	आंध्र प्रदेश Andhra Pradesh	दक्षिणी क्षेत्र SR	26.37	94.24	
54	कर्नाटक Karnataka		147.04	72.76	
55	केरल Kerala		2.17	104.01	
56	तमिलनाडु Tamilnadu		0.00	85.42	
57	पॉण्डिचेरी Pondicherry		0.00	0.00	
58	गोवा Goa		0.00	0.00	
59	लांको कोंडापल्ली LANCO_KONDPLY		0.00	0.00	
60	सिमापुरी SIMHAPURI		7.67	0.00	
61	मीनाक्षी MINAXI		23.07	0.00	
62	तेलंगाना TELANGANA		27.12	122.30	
63	पश्चिम बंगाल West Bengal		पूर्वी क्षेत्र ER	88.08	33.26
64	उड़ीशा Odisha			43.20	1.53
65	बिहार Bihar	0.00		0.00	
66	झारखंड Jharkhand	0.00		0.00	
67	सिक्किम Sikkim	17.18		0.00	
68	दामोदर घाटी परियोजना DVC	61.61		0.00	
69	स्टरलाइट STERLITE	0.00		0.00	
70	मैथन पावर लिमिटेड Maithon P. Ltd	58.80		0.00	
71	आधुनिक पा. लिमिटेड Adhunik P.Ltd	0.00		0.00	
72	चुजाचैन Chuzachen HEP	9.72		0.00	
73	रंगित Rangit HEP	2.44		0.00	
74	तीस्ता Teesta HEP	8.42		0.00	
75	जीएमआर कमलंगा GMR Kamalanga	43.73		0.00	
76	जिंदल आई पी टी एल JIPTL	0.00		0.00	
77	अरुणाचल प्रदेश Arunachal Pradesh	पूर्वोत्तर क्षेत्र NER		0.00	11.10
78	असम Assam			0.11	26.91
79	मणिपुर Manipur		4.89	9.71	
80	मेघालय Meghalaya		4.61	17.69	
81	मिज़ोरम Mizoram		1.41	0.00	
82	नागालैंड Nagaland		0.00	1.55	
83	त्रिपुरा Tripura		59.72	0.00	
84	अगरतला जीटीपीपी Agartala GTPP_AGO		0.00	0.00	
85	कोपिली KOPIJI KP1		0.00	0.00	
86	असम जीबीपीपी Assam GBPP_KTO		0.00	0.00	
87	लोकटक LOKTAK		1.14	0.00	
88	रंगानदी Ranganadi		0.00	0.00	
89	दोयांग Doyang		0.00	0.00	
90	पलाताना Palatana		8.72	0.00	
कुल Total			2375.27	2375.27	

16. RENEWABLE ENERGY CERTIFICATE MECHANISM**MONTH:-JANUARY2015****RE Source & Unit wise break up (JANUARY15)**

Sr.No	Source Wise	Accreditation		Registration	
		Capacity (MW)	Unit	Capacity (MW)	Unit
1	Wind	0	0	2.45	2
2	Urban or Municipal Waste	0	0	0	0
3	Solar Thermal	0	0	0	0
4	Solar PV	5.5	2	16.39	12
5	Small Hydro	0	0	2.5	1
6	Others	0	0	0	0
7	Geothermal	0	0	0	0
8	Biomass	3	1	0	0
9	Bio-fuel cogeneration	12	2	10.2	2
	Total	20.5	5	31.54	17

RECs Issued (JANUARY15)

Sr.No.	Non Solar	Solar	Total
1	411590	0	411590

Redemption of REC (JANUARY15)

Sr.No.	Non Solar	Solar	Total
1	537009	32140	569149

16. RENEWABLE ENERGY CERTIFICATE MECHANISM**MONTH:-JANUARY2015****RE Source & Unit wise break up (Apr-14- Jan-15)**

Sr.No	Source Wise	Accreditation		Registration	
		Capacity (MW)	Unit	Capacity (MW)	Unit
1	Wind	128.11	12	135.57	26
2	Urban or Municipal Waste	0	0	0	0
3	Solar Thermal	0	0	0	0
4	Solar PV	119.55	72	185.43	98
5	Small Hydro	46.98	5	92.98	10
6	Others	0	0	0	0
7	Geothermal	0	0	0	0
8	Biomass	38.8	4	69.7	7
9	Bio-fuel cogeneration	138.78	17	89.18	13
	Total	472.22	110	572.86	154

RECs Issued (April14- January 15)

Sr.No.	Non Solar	Solar	Total
1	7347662	1231028	8578690

Redemption of REC (April 14 - JANUARY-15)

Sr.No.	Non Solar	Solar	Total
1	1495950	49649	1545599

16. RENEWABLE ENERGY CERTIFICATE MECHANISM**MONTH:-JANUARY2015****RE Source & Unit wise break up Since Inception to JANUARY15**

Sr.No	Source Wise	Accreditation		Registration	
		Capacity (MW)	Unit	Capacity (MW)	Unit
1	Wind	2459.09	619	2309.75	592
2	Urban or Municipal Waste	8	1	0	0
3	Solar Thermal	3	1	0	0
4	Solar PV	570.57	273	554.31	262
5	Small Hydro	342.69	37	295.99	33
6	Others	1.67	1	1.67	1
7	Geothermal	0	0	0	0
8	Biomass	696.66	74	693.66	72
9	Bio-fuel cogeneration	884.47	99	830.52	94
	Total	4966.14	1105	4685.9	1054

RECs Issued since Inception to JANUARY15

Sr.No.	Non Solar	Solar	Total
1	19136814	1658593	20795407

Redemption of REC since Inception to JANUARY15

Sr.No.	Non Solar	Solar	Total
1	7769463	130342	7899805

REC Closing balance as on 31.01.2015

Sr.No.	Non Solar	Solar	Total
1	11190409	1528251	12718660

Major Grid Events of Northern Region for January-2015

S.NO.	Region	Name of Element	Owner / Agency	Outage		Revival		Outage Duration	Event	Generation Loss(MW)	Load Loss(MW)	Category as per CEA Grid Standards
				Date	Time	Date	Time	Time				
1	NR	1). 400kV Abdullapur-Karchamwangtoo-I 2). 400kV Karchamwangtoo-Baspa-I 3). 400kV Karchamwangtoo-Jhakri-I	JPL/JPHydro	3-Jan-15	00:03	3-Jan-15	05:28	05:25:00	Due to overvoltage at Karchamwangtoo all the lines given in column C tripped.	Nil	Nil	GI-2
2	NR	1). 400 kV Uri-Wagoora-D/C 2). 400 kV Kishenpur-New Wanpoh-II 3). 220kV Wagoora-Zainkote D/C 4). 220kV Wagoora-Pampore D/C 5). Unit-III(120MW)at Uri-I 6). 315MVA, 400/220kV ICT-I,II,III at Wagoora	PG	11-Jan-15	11:06	11-Jan-15	19:05	07:59	As reported, 220 kV side of ICT-III , R phase CT blasted & caught fire resulting in Bus bar protection operation & all ICT-#1,#2 & #3 (ICT #4 was under shutdown) & lines at Wagoora(PG) tripped along with 400 kV Kishenpur-New Wanpoh-2 & Unit #3 at Uri-I HEP tripped.	100	500	GD-1
3	NR	1). 400kV Akal-Barmer-I 2). 220kV Akal-Jajiya 3). 220kV Akal-Amarsagar 4). 220kV Akal-Bhu Ener 5). 220kV Akal-Mada Suz 6). 220kV Akal-Dengari 7). 220kV Akal-Bhensada 8). Ramgarh Generating Unit 9) Wind Generation around Akal	RRVPL	15-Jan-15	07:04	15-Jan-15	07:47	00:43	Due to Dense Fog around Akal area, all 400kV and 220kV line given in column C tripped.	180	350-400	GD-1
4	NR	1). 220 kV Panipat- Panipat(BBMB) Q/C 2). 220kV Panipat-Narela T/C 3). 220kV Panipat-Kurukshetra ckt 4). 220kV Panipat-Charkhi-Dadri ckt 5). 220 kV Panipat(BBMB)- Dhulkote-1&2 6). 400/220 kV 450MVA ICT-1&2,Panipat(BBMB) 7). 220/132kV ICT's at Panipat(BBMB) 8). 220/33kV ICT's at Panipat(BBMB)	BBMB	20-Jan-15	02:56	20-Jan-15	04:45	01:49	Bus bar protection operated at 220kV Bus-1 of Panipat(BBMB). Due to wrong insulator selection for Bus-2. Bus-2 also tripped. All the elements connected with Panipat(BBMB) tripped	Nil	200	GD-1
5	NR	1). 220 kV Panipat- Panipat(BBMB) Q/C 2). 220kV Panipat-Narela T/C 3). 220kV Panipat-Kurukshetra ckt 4). 220kV Panipat-Charkhi-Dadri ckt 5). 220 kV Panipat(BBMB)- Dhulkote ckt-1 & 2 6). 400/220 kV 450MVA ICT-1 & 2 at Panipat(BBMB) 7). 220/132kV ICT's at Panipat(BBMB) 8). 220/33kV ICT's at Panipat(BBMB)	BBMB	25-Jan-15	02:48	25-Jan-15	06:11	03:23	Busbar protection of 220KV Bus-II operated at Panipat(BBMB) due to which 4 lines of 220KV alongwith 400/220KV ICT-2 were tripped at Panipat(BBMB) s/s	Nil	Nil	GI-2
6	NR	1).220 kV Badarpur-Ballabgarh-I 2).220 kV Badarpur-Ballabgarh-II 3).220 kV Ballabgarh-Dadri 4).220 kV Ballabgarh-Samaypur-I 5).220 kV BallabgarhSamaypur-II 6).220 kV BallabgarhSamaypur-III 7).220/132 kV Ballabgarh ICT-I,II & III	BBMB	29-Jan-15	02:49	29-Jan-15			220 kV Ballabgarh(BBMB) s/s, B phase CVT of Bus-2 Blasted.This caused outage of Bus-II. Later B/B protection of Bus-1 operated and whole 220 kV station became dark	Nil	140	GD-1

Major Grid Events of Western Region for January-2015

Sr. No.	Details of incident (Elements / Generation Tripped)	Owner Utility	Date	Time	Effect (Loss of generation/ Load), if any	Category as per CEA Grid Standards
1	Bus Fault at 400 kV JPL Stage 2 S/s	JPL	06-01-2015	13:16	Nil	GI-2
2	Multiple element tripping at 220 kV Bus of 400/220 kV Nagda S/s	MPPTCL	12-01-2015	20:42	Load Loss : Not Known (To be submitted by Gujarat SLDC)	GI-1
3	Multiple tripping from 220 kV Sagar S/s	MPPTCL	13-01-2015	16:49	Nil	GI-1
4	Blackout at 220 /132 kV Ponda S/s	Goa	13-01-2015	16:30	Load Loss : 140 MW	GD-1
5	Tripping of HVDC Vindhyachal both poles	PGCIL	19-01-2015	22:39	Nil	GI-2
6	Multiple Tripping at Shingaji S/s	MPPGCL	21-01-2015	13:44	submitted by MP SLDC	GI-2
7	220 kV Bus Fault at 400/220 kV Wanakbori S/s	GSECL	21-01-2015	12:53	Gen loss : 600 MW	GI-2
8	Blackout of 220/66 kv Sartanpur S/s	GETCO	22-01-2015	17:25	load Loss : Not Known To be submitted by Gujarat SLDC	GD-1
9	Bus Fault at 220/132 kV Damoh(MP) S/s: Due to Failure of R-Phase CT of 220 kV Katni line at Damoh S/S	MPPTCL	23-01-2015	11:28	Load Loss : Not Known To be submitted by MP SLDC	GD-1
10	Multiple 400 kV lines tripping from Karad on Over Voltage	MSETCL	26-01-2015	16:37	Nil	GI-2

Major Grid Events of Southern Region for January-2015												
S.NO.	Region	Name of Element	Owner / Agency	Outage		Revival		Outage Duration	Event	Generation Loss(MW)	Load Loss(MW)	Category as per CEA Grid Standards
				Date	Time	Date	Time					
1	SR	1.400/110kV ICT-1 2.400/230kV ICT-2&3 3.400kV Kayathar-Karaikudi-1	TNEB	07-Jan-15	23:33	08-Jan-15	02:44	3:11:00	Failure of B phase Current transformer in ICT-2 at Kayathar substation caused a bus fault and this in turn resulted in operation of Bus-bar	Nil	Nil	GI-2
2	SR	1. HVDC Bhadrawati Pole-2	PG	08-Jan-15	09:57	08-Jan-15	10:16	0:19:00	Pole tripped on operation of Non Valid Tap code alarm	Nil	Nil	GI-2
3	SR	1.400 kV Srisailam-Mamidapalli-1 2. 400 kV Srisailam-Satenapalli-2 3.400kV bus-2 at Srisailam LBHS	AP	23-Jan-15	16:10	23-Jan-15	19:28	03:18:00	As per report, Bus-2 at Srisailam became dead while converting Srisailam Generator to condenser mode. Direct trip was received at Mamidapalli and Satenapalli end.	Nil	Nil	GI-2
4	SR	1.400 kV NLC EXP- IL&FS 2.400 kV ILFS - TRICHY 3.400kV Bus at IL&FS	TNEB	24-Jan-15	13:15	24-Jan-15	14:12	00:57:00	As per report, 400kV NLC EXP-IL&FS line tripped on R-phase to earth fault.400kV Trichy-IL&FS line tripped at Trichy due to Direct trip receive from IL&FS. It was also mentioned that over voltage protection had operated at IL&FS	Nil	Nil	GI-2

Major Grid Events of Eastern Region for January-2015

S.No	Region	Name of Element	Owner / Agency	Outage		Revival		Outage Duration	Event	Generation Loss(MW)	Load Loss(MW)	Category as per CEA Grid Standards
				Date	Time	Date	Time					
1	ER	1). 400kV Meramundali-IBTPS 2). 400kV Meramundali-Angul-I 3). 400kV Angul-Bolangir	OPTCL/PG	19-Jan-15	17:36	19-Jan-15	18:35	00:59	Due to R-Phase LA Blast of 400 kV Meramundali-IBTPS, 400 kV Meramundali-Angul-1 & , 400 kV Angul-Bolangir tripped.	Nil	Nil	GI-2
2	ER	1). 400kV Angul-Bolangir 2). 400kV Angul-Meramundali-I 3). 400kV Angul-GMR-I	OPTCL/PG	20-Jan-15	11:23	20-Jan-15	12:17	00:54	Due to the fault at Meramundali end, all elements given in column C tripped.	Nil	Nil	GI-2

Major Grid Events of North Eastern Region for January 2015

S.NO.	Region	Name of Element	Owner / Agency	Outage		Revival		Outage Duration	Event	Generation Loss(MW)	Load Loss(MW)	Category as per CEA Grid Standards
				Date	Time	Date	Time					
1	NER	400 kV Balipara-Ranganadi II	PG	1-Jan-15	22:02	1-Jan-15	22:15	00:13:00	400 kV Balipara-Ranganadi-II got tripped on O/V while 400 kV Balipara-Ranganadi-I was opened to contain O/V. Load Loss took place in the Ziro and capital areas of Arunachal Pradesh while load loss took place in Gohpur area of Assam.	Nil	78	GD-1
2	NER	400 kV Balipara-Ranganadi II	PG	2-Jan-15	13:11	2-Jan-15	13:14	00:03:00	400 kV Balipara-Ranganadi-II got tripped on O/V while 400 kV Balipara-Ranganadi-I was opened to contain O/V. Load Loss took place in the Ziro and capital areas of Arunachal Pradesh while load loss took place in Gohpur area of Assam.	Nil	80	GD-1
3	NER	132 kv Dimapur(PG)-Kohima	Nagaland	2-Jan-15	13:30	2-Jan-15	13:40	00:10:00	The line tripped from Dimapur end on operation of overcurrent protection and load loss took place in Nagaland area.	Nil	26	GD-1
4	NER	400 kV Balipara-Ranganadi II	PG	3-Jan-15	23:11	3-Jan-15	23:36	00:25:00	400 kV Balipara-Ranganadi-II got tripped on O/V while 400 kV Balipara-Ranganadi-I was opened to contain O/V. Load Loss took place in the Ziro and capital areas of Arunachal Pradesh while load loss took place in Gohpur area of Assam.	Nil	58	GD-1
5	NER	400 kV Balipara-Ranganadi II	PG	9-Jan-15	12:35	9-Jan-15	12:40	00:05:00	400 kV Balipara- Ranganadi I was opened to contain O/V.Due to tripping of 400 kV Balipara- Ranganadi II, power supply to Ziro & Capital area of Arunachal Pradesh and Gohpur area of Assam disrupted.	Nil	35	GD-1
6	NER	132 kV Imphal(PG)- Imphal(Manipur)-I	PG/Manipur	15-Jan-15	20:20	15-Jan-15	20:40	00:20:00	Due to tripping of 132 kV Imphal(PG)-Imphal on earth fault,power supply on Imphal area disrupted. 132 kV Imphal(PG) - Imphal I was under shutdown wef 0949 Hrs of 23.12.14	Nil	56	GD-1
7	NER	132 kV Dimapur(PG) - Kohima	Nagaland	17-Jan-15	15:45	17-Jan-15	15:54	00:09:00	Due to tripping of 132 kV Dimapur- Kohima on B-Phase to Ground Fault, power supply to Kohima area of Nagaland & Karong area of Manipur interrupted	Nil	33	GD-1
8	NER	1.132 kV Loktak-Imphal 2.132 kV Loktak-Ningthoukong 3.132 kV Ningthoukong-Imphal 4.132 kV Loktak-Rengpang 5.Loktak Unit-4	PG/MSPCL/ NHPC	19-Jan-15	13:02	19-Jan-15	13:45	00:43:00	Due to tripping of 132 kV Loktak - Imphal (PG), 132 kV Loktak - Ningthoukhong & 132 kV Ningthoukong - Imphal(PG), power supply to Ningthoukhong area of Manipur & Loktak HEP was disrupted. (132 kV Loktak- Jiribam was under Planned shutdown w.e.f 0708 Hrs on 19.01.15)	8	16	GD-1
9	NER	1) 132 kV Dimapur (PG) - Imphal (PG)	PG	19-Jan-15	15:34	19-Jan-15	15:41	00:07:00	Manipur is connected to the rest of NER grid through 132 kV Loktak- Jiribam & 132 kV Dimapur (PG) - Imphal (PG) lines. Due to tripping of 132 kV Dimapur (PG) - Imphal (PG) line, power supply to Manipur & Loktak HEP was disrupted. (132 kV Loktak- Jiribam was under Planned shutdown w.e.f 0708 Hrs on 19.01.15)	8	76	GD-1
10	NER	1.132 kV Loktak-Ningthoukong 2.132 kV Ningthoukong-Imphal	PG/MSPCL	24-Jan-15	18:32	24-Jan-15	19:44	01:12:00	Due to tripping of 132 kV Loktak - Ningthoukhong & 132 kV Ningthoukong - Imphal(PG), power supply to Ningthoukhong area of Manipur was disrupted.	Nil	30	GD-1

11	NER	1.132 kV Badarpur - Kolasib S/C 2.132 kV Aizawl - Kolasib S/C	PG	26-Jan-15	07:42	26-Jan-15	08:11	00:29:00	Due to tripping of all connected feeders to Kolasib, power supply to Kolasib area of Mizoram was disrupted	Nil	7	GD-1
12	NER	400 kV Balipara-Ranganadi II	PG	27-Jan-15	11:19	27-Jan-15	11:35	00:16:00	400 kV Balipara- Ranganadi I was opened to contain O/V.Due to tripping of 400 kV Balipara- Ranganadi II, power supply to Ziro & Capital area of Arunachal Pradesh and Gohpur area of Assam disrupted.	Nil	55	GD-1
13	NER	400 kV Balipara-Ranganadi II	PG	27-Jan-15	12:21	27-Jan-15	13:18	00:57:00	400 kV Balipara- Ranganadi I was opened to contain O/V.Due to tripping of 400 kV Balipara- Ranganadi II, power supply to Ziro & Capital area of Arunachal Pradesh and Gohpur area of Assam disrupted. Power was restored through 400 kV Balipara - Ranganadi I, while 400 kV Balipara - Ranganadi II was taken under shutdown till 1814 Hrs on 01.02.15	Nil	55	GD-1

18. NEW ELEMENTS COMMISSIONED in JANUARY-2015

COMMISSIONING OF NEW GENERATING UNITS

REGION	SL. NO.	CONSTITUENT	UNIT NAME	UNIT NO	CAPACITY (MW)	DATE	TIME
WR	1	Maharashtra	Chandrapur	8	500	01-11-2015	

COMMISSIONING OF NEW TRANSMISSION LINES

REGION	SL. NO.	CONSTITUENT	LINE NAME	CKT NO	KV	DATE	TIME
NR	1	RRVNL	ANTA-PHAGI	I	765	04-01-2015	21:09
	2	RRVNL	ANTA-PHAGI	II	765	08-01-2015	21:21
	1	POWERGRID	GAYA-BALIA	I	765	05-01-2015	21:34
WR		GETCO	Bachau-Varsana	I	400	06-01-2015	11:37
		GETCO	Bachau-Varsana	II	400	06-01-2015	12:19
NER	1	POWERGRID	BONGAIGAON-AZARA	1	400	12-01-2015	19:35
	2						

COMMISSIONING OF NEW ICTS

REGION	SL. NO.	CONSTITUENT	STATION NAME	KV RATIO	CAPACITY (MVA)	DATE	TIME
NR	1	RRVNL	PHAGI	765/400	1500	04-01-2015	18:16
NR	1	RRVNL	ANTAH	765/400	1500	05-01-2015	15:31
NR	2	RRVNL	PHAGI	765/400	1500	08-01-2015	16:55
NR	3	RRVNL	ANTAH	765/400	1500	09-01-2015	14:12

COMMISSIONING OF BUS REACTORS

REGION	SL.NO.	CONSTITUENT	STATION NAME	KV	CAPACITY (MVAR)	DATE	TIME
WR	1	POWERGRID	Magarwada GIS (DAMAN)	400	80	09-01-2015	18:20
	2	POWERGRID	Parli	400	125	08-01-2015	20:00

COMMISSIONING OF LINE REACTORS

REGION	SL. NO.	CONSTITUENT	STATION NAME	LINE NAME	KV	CAPACITY (MVAR)	DATE	TIME
WR	1	POWERGRID	SATNA	SATNA-VINDHYACHAL-II	765	240	12-01-2015	19:35
		POWERGRID	Boisar	Boisar-Aurangabad ckt I	400	80	09-01-2015	22:29
		POWERGRID	Boisar	Boisar-Aurangabad ckt II	400	80	09-01-2015	22:29
		Reliance Power	Sasan	Sasan-Satna Ckt-II	765	240	21-01-2015	12:47

19.विद्युत विभव रूपरेखा माह – जनवरी 2015			VOLTAGE PROFILE - January 2015					
क्र.स. Sl. No.	क्षेत्र REGION	उपकेंद्र SUBSTATION	VOLTAGE < V(lower)* (V=122,380,728 kV)	V(lower) < VOLTAGE < V(upper)*	VOLTAGE > V(upper)* (V=145, 420, 800 kV)	उच्चतम (कि.वो.) Maximum (kV)	निम्नतम (कि.वो.) Minimum (kV)	औसत (कि.वो.) Average (kV)
1	पूर्वी क्षेत्र ER	फरक्का FARAKKA	0.0%	60.5%	39.5%	426	410	419
2		कहलगाव KAHALGAON	0.8%	0.0%	99.2%	421	416	417
3		तालचर TALCHER	0.0%	100.0%	0.0%	419	409	414
4		पूणिया PURNEA	0.0%	82.0%	18.0%	426	398	414
5		मुजफ्फरपुर MUZAFFARPUR	1.3%	97.5%	1.2%	423	379	403
6		जमशेदपुर JAMSHEDPUR	0.0%	7.4%	92.6%	433	416	424
7		रंगाली RENGALI	0.0%	100.0%	0.0%	413	404	409
8		जेयपुर JEYPORE	0.0%	60.5%	39.5%	439	392	418
1	उत्तरी क्षेत्र NR	नल्लागढ़ NALLAGARH	0.0%	57.7%	42.3%	432	389	417
2		भिवाड़ी BHIWADI	0.0%	60.3%	39.7%	432	392	418
3		बल्लभगढ़ BALLABGARH	2.0%	58.2%	39.7%	433	378	409
4		इलाहाबाद ALLAHABAD	0.0%	85.7%	14.3%	428	401	415
5		हिसार HISSAR	0.0%	99.7%	0.3%	422	389	407
6		बवाना BAWANA	0.9%	63.9%	35.2%	430	375	413
7		कानपुर KANPUR	0.0%	90.6%	9.4%	426	393	412
8		बरसी BASSI	0.6%	67.2%	32.3%	436	377	412
9		लखनऊ LUCKNOW 765 kV	3.8%	96.2%	0.0%	781	727	733
10		मोगा MOGA	1.1%	87.0%	11.9%	427	379	409
11		रतनगढ़ RATANGARH	0.0%	94.2%	5.7%	426	395	410
1	पश्चिमी क्षेत्र WR	आसोज ASOJ	2.1%	90.7%	7.2%	426	378	405
2		इटारसी ITARSI	0.0%	100.0%	0.0%	419	390	407
3		जेतपुर JETPUR	0.0%	100.0%	0.0%	415	388	402
4		कासोर KASOR	0.0%	99.3%	0.7%	422	402	413
5		कोल्हापुर KOLHAPUR	0.0%	45.0%	55.0%	436	396	420
6		बीना BINA	0.0%	98.0%	2.0%	425	394	411
7		ग्वालियर GWALIOR	0.0%	100.0%	0.0%	420	384	402
8		रायपुर RAIPUR	0.0%	62.1%	37.9%	435	405	418
9		जबलपुर JABALPUR	0.0%	100.0%	0.0%	421	391	408
10		धुले DHULE	0.0%	67.3%	32.7%	434	389	415
1	दक्षिणी क्षेत्र SR	श्रीपेरुपुडूर SRIPERUMPUDUR	0.0%	92.5%	7.5%	426	401	414
2		नेवेली NEYVELI	0.0%	100.0%	0.0%	418	401	410
3		सेलम SALEM	0.0%	100.0%	0.0%	414	384	402
4		बंगलूरु BANGALORE	0.8%	99.2%	0.0%	416	379	396
5		होसूर HOSUR	0.0%	100.0%	0.0%	414	383	399
6		रामागुंडम RAMAGUNDAM	0.0%	99.5%	0.5%	421	403	414
7		विजयवाड़ा VIJAYAWADA	0.4%	65.3%	34.3%	431	377	416
8		तिरुवनंतपुरम TIRIVANDRUM	0.0%	99.9%	0.1%	422	389	402
9		हैदराबाद HYDERABAD	0.0%	82.5%	17.5%	427	398	414
1	पूर्वोत्तर क्षेत्र NER	मिसा MISA	0.0%	96.0%	2.0%	426	393	410
2		बलिपारा BALIPARA	0.0%	97.7%	1.1%	432	387	407
3		बोंगाईगाँव BONGAIGAON	0.0%	100.0%	0.0%	418	388	404
4		हाफ्लोंग HAFLONG 132 kV	1.0%	97.8%	0.0%	139	118	131
5		आइजोल AIZWAL 132 kV	4.2%	93.5%	0.0%	135	108	128
6		कुमारघाट KUMARGHAT 132 kV	0.0%	100.0%	0.0%	135	125	131
7		इम्फाल IMPHAL 132 kV	92.7%	6.7%	0.0%	141	106	117
8		खलैरियट Khlieriat_PG 132 kV	0.0%	100.0%	0.0%	139	124	132

*Percentage is calculated w.r.t. Time of one month.



POWER SYSTEM OPERATION CORPORATION LIMITED

पावर सिस्टम ऑपरेशन कारपोरेशन लिमिटेड

NATIONAL LOAD DESPATCH CENTRE – राष्ट्रीय भार प्रेषण केन्द्र

POWERGRID, B-9, Qutab Institutional Area,
Katwaria Sarai, New Delhi-110016.