

पावर सिस्टम ऑपरेशन कॉरपोरेशन लिमिटेड

(पावरग्रिड की पूर्ण स्वामित्व प्राप्त सहायक कंपनी)

POWER SYSTEM OPERATION CORPORATION LIMITED

(A wholly owned subsidiary of POWERGRID)



पंजीकृत एवं केन्द्रीय कार्यालय: बी-9, प्रथम तल, कुतुब इंस्टीट्यूशनल एरिया, कटवारिया सराय, नई दिल्ली-110 016
Registered & Corporate Office : B - 9, 1st Floor, Qutub Institutional Area, Katwaria Sarai, New Delhi - 110 016
Website : www.posoco.in, www.nldc.in, Tel: 011-26536832, 26524522, Fax: 011-26524525, 26536901

संदर्भ संख्या:-POSOCO/NLDC/GM/ 83

दिनांक: 23.07.2014

सेवा में,

वितरण सूची के अनुसार

विषय:- निष्पादन रिपोर्ट - जून 2014

महोदय,

आई०ई०जी०सी०-2010 के प्रावधान के अनुसार, - जून 2014 माह की अखिल
भारतीय प्रणाली की निष्पादन रिपोर्ट

धन्यवाद

भवदीय

एस-आर-नरसिंहन

(एस. आर. नरसिंहन)

अपर महाप्रबंधक

(रा०भा०प्रे०के०)

संलग्नक: मासिक प्रणाली रिपोर्ट

वितरण सूची

Distribution List

1. सचिव, के.वि.नि.आ. तीसरा एवं चौथा तल, चंद्रलोक भवन, 36, जनपथ, नई दिल्ली - 110001
Secretary, CERC, 3rd & 4th Floor, Chanderlok Building, 36, Janpath, New Delhi-110001
2. मुख्य अभियंता, (जी एम), के. वि. प्रा., सेवा भवन, आर. के. पुरम, नई दिल्ली - 110066
Chief Engineer (GM), CEA, Sewa Bhavan, R.K.Puram, New Delhi-110066
3. सदस्य सचिव, ऊ. क्षे. वि. स., 18/ ए, शहीद जीत सिंह सनसनवाल मार्ग, नई दिल्ली - 110016
Member Secretary, NRPC, 18/A, SJSS Marg, Katwaria Sarai, New Delhi-110016
4. सदस्य सचिव, प. क्षे. वि. स., एफ-3, एम आई डी सी क्षेत्र, अंधेरी, मुंबई - 400093
Member Secretary, WRPC, F-3, MIDC Area, Andheri (East), Mumbai-400093
5. सदस्य सचिव, द. क्षे. वि. स., 29, रेस कोर्स क्रॉस रोड, बंगलुरु - 560009
Member Secretary, SRPC, 29, Race Course Cross Road, Bangalore-560009
6. सदस्य सचिव, पू. क्षे. वि. स., 14, गोल्फ क्लब रोड, कोलकाता - 700033
Member Secretary, ERPC, 14, Golf Club Road, Kolkata-700033
7. सदस्य सचिव, ऊ. पू. क्षे. वि. स., मेघालय राज्य आवसीय वित्त सहकारी समिति लिमिटेड भवन, नॉग्रिम हिल्स, शिलॉंग - 793003
Member Secretary, NERPC, Meghalaya State Housing Finance Cooperative Society Ltd.
Building, Nongrim Hills, Shillong -793003
8. महाप्रबंधक, पू. क्षे. भा. प्रे. के., 14, गोल्फ क्लब रोड, कोलकाता - 700033
General Manager, ERLDC, 14, Golf Club Road, Kolkata-700033
9. महाप्रबंधक, प. क्षे. भा. प्रे. के., एफ-3, एम आई डी सी क्षेत्र, अंधेरी, मुंबई - 400093
General Manager, WRLDC, F-3, MIDC Area, Andheri (East), Mumbai-400093
10. महाप्रबंधक, ऊ. क्षे. भा. प्रे. के., 18/ ए, शहीद जीत सिंह सनसनवाल मार्ग, नई दिल्ली - 110016
General Manager, NRLDC, 18/A, SJSS Marg, Katwaria Sarai, New Delhi-110016
11. कार्यपालक निदेशक, द. क्षे. भा. प्रे. के., 29, रेस कोर्स क्रॉस रोड, बंगलुरु - 560009
Executive Director, SRLDC, 29, Race Course Cross Road, Bangalore-560009
12. महाप्रबंधक, ऊ. पू. क्षे. भा. प्रे. के., डोंगतिह, लोअर नॉग्रह, लापलंग, शिलॉंग - 793006
General Manager, NERLDC, Dongtiah, Lower Nongrah, Laplang, Shillong-793006



POWER SYSTEM OPERATION CORPORATION LIMITED

(A wholly owned subsidiary of POWERGRID)

पावर सिस्टम ऑपरेशन कारपोरेशन लिमिटेड

NATIONAL LOAD DESPATCH CENTRE –राष्ट्रीय भार प्रेषण केन्द्र

मासिक ऑपरेशन रिपोर्ट

Monthly
Operation Report



जून 2014

पावर सिस्टम ऑपरेशन कॉर्पोरेशन लिमिटेड
राष्ट्रीय भार प्रेषण केंद्र, नई दिल्ली

POWER SYSTEM OPERATION CORPORATION LTD
NATIONAL LOAD DESPATCH CENTRE, NEW DELHI



माह जून 2014 के लिए प्रचालन निष्पादन रिपोर्ट
OPERATIONAL PERFORMANCE REPORT FOR THE
MONTH OF JUNE 2014

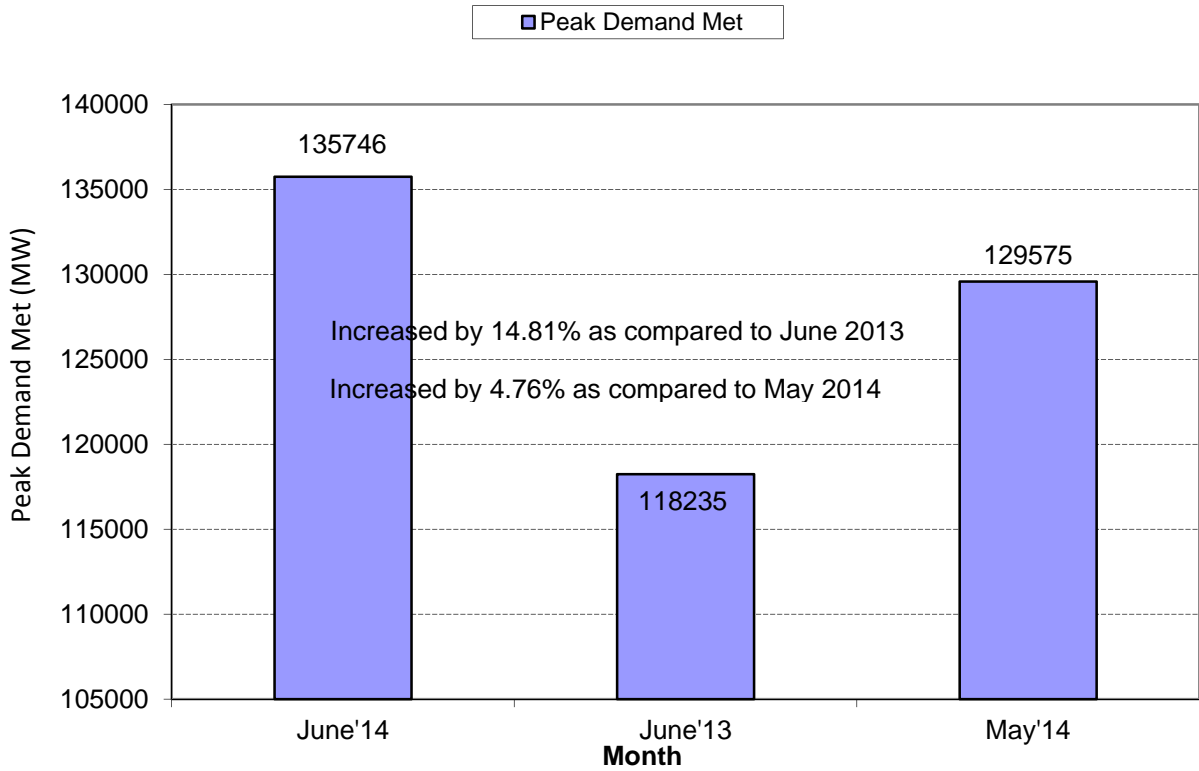
पृष्ठसूची CONTENTS

1. माह जून 2014 की सारांश रिपोर्ट SUMMARY OF REPORT FOR THE MONTH OF JUNE' 2014	1-4
2. क्षेत्रवार स्थापित विद्युत क्षमता REGION WISE INSTALLED CAPACITY	5
3. राष्ट्रीय स्तर पर संध्यकालीन शिखर मांगपूर्ति PEAK DEMAND MET AT NATIONAL LEVEL	6-8
4. राष्ट्रीय स्तर पर विद्युत ऊर्जा खपत ENERGY CONSUMPTION AT NATIONAL LEVEL	9-10
5. फ्रिक्वेंसी रूपरेखा FREQUENCY PROFILE	11-14
6. राष्ट्रीय स्तर पर जल विद्युत ऊर्जा उत्पादन HYDRO GENERATION AT NATIONAL LEVEL	15-16
7. राष्ट्रीय स्तर पर पन विद्युत ऊर्जा उत्पादन WIND GENERATION AT NATIONAL LEVEL	17
8. ऊर्जा आपूर्ति की वास्तविक स्थिति ACTUAL POWER SUPPLY POSITION	18
9. शिखर मांग आवश्यकता एवं आपूर्ति की पिछले वर्ष के जून माह से तुलना ENERGY REQUIREMENT & MET COMPARISON WITH JUN'2013	19
10. ऊर्जा आवश्यकता एवं आपूर्ति की पिछले वर्ष के जून माह से तुलना PEAK DEMAND REQUIREMENT & MET COMPARISON WITH JUN'2013	20
11. क्षेत्रीय स्तर पर शिड्यूल एवं ड्रावल SCHEDULE & DRAWAL AT REGIONAL LEVEL	21
12. अंतर क्षेत्रीय विनिमय INTER-REGIONAL EXCHANGES	22-27
13. अंतर राष्ट्रीय विद्युत विनिमय INTER-NATIONAL EXCHANGES	28
14. एसटीओए (द्विपक्षीय एवं सामूहिक) एवं यू आई का ब्यौरा BILATERAL & COLLECTIVE SHORT-TERM OPEN ACCESS & UI DETAILS	29
15. पावर मार्केट की सूचना POWER MARKET INFORMATION	30-31

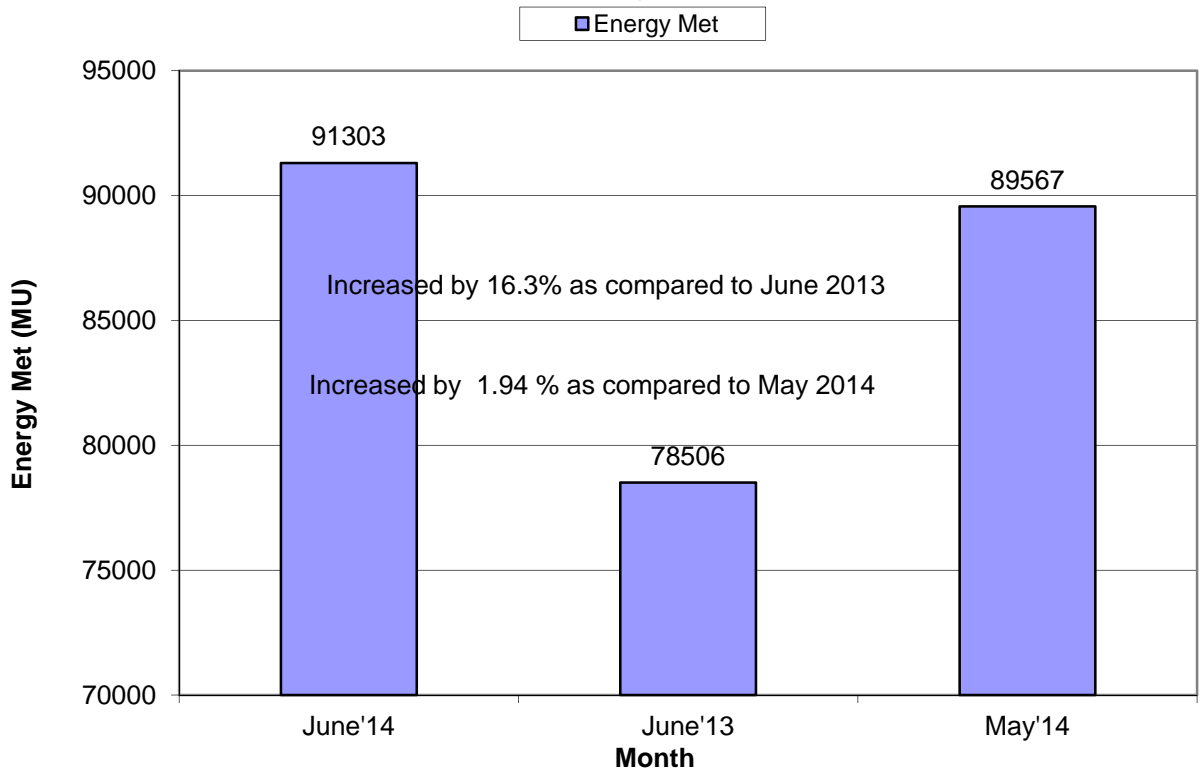
16. अक्षय ऊर्जा प्रमाण - पत्र प्रक्रिया RENEWABLE ENERGY CERTIFICATE MECHANISM	32-34
17. मुख्य घटनाये एवं डिसटर्बेनसेज IMPORTANT EVENTS/DISTURBANCES	35-36
18. नये कमीशंड पारेषण तत्व NEW ELEMENTS COMMISSIONED	37
19. विभव रूपरेखा VOLTAGE PROFILE	38

1. SUMMARY OF REPORT FOR THE MONTH OF JUNE 2014

Peak Demand Met

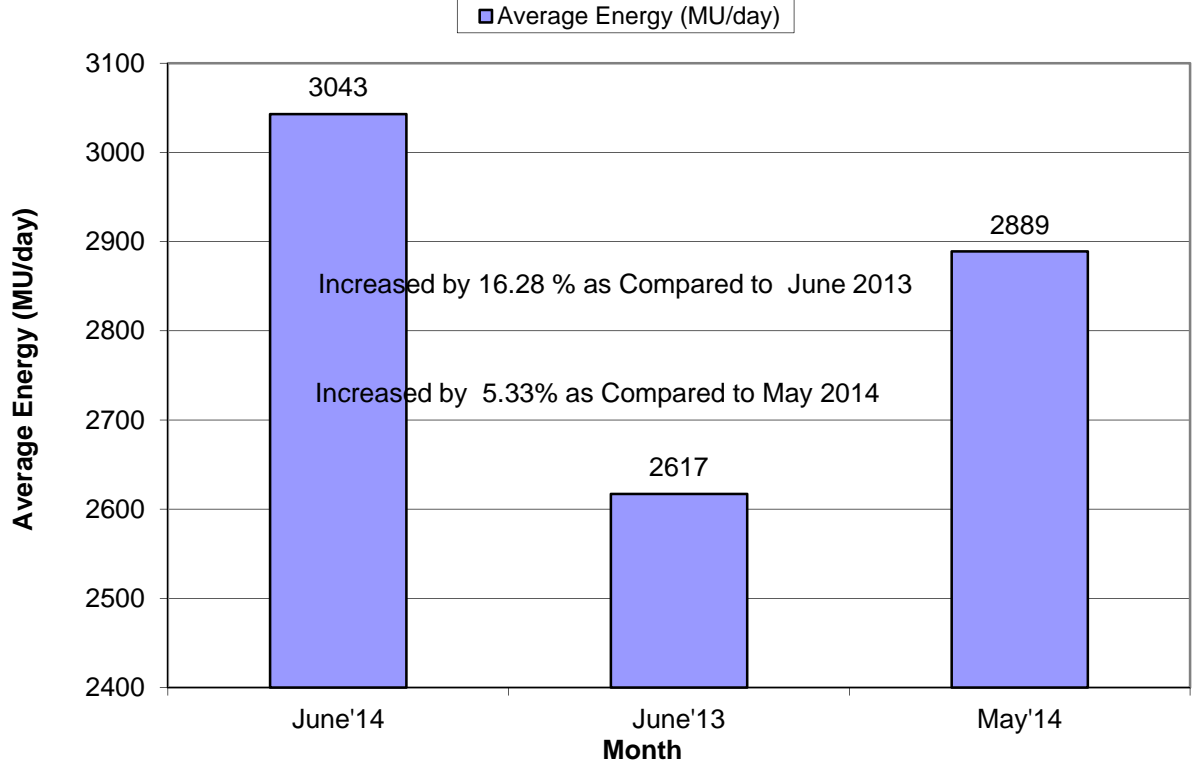


Energy Met

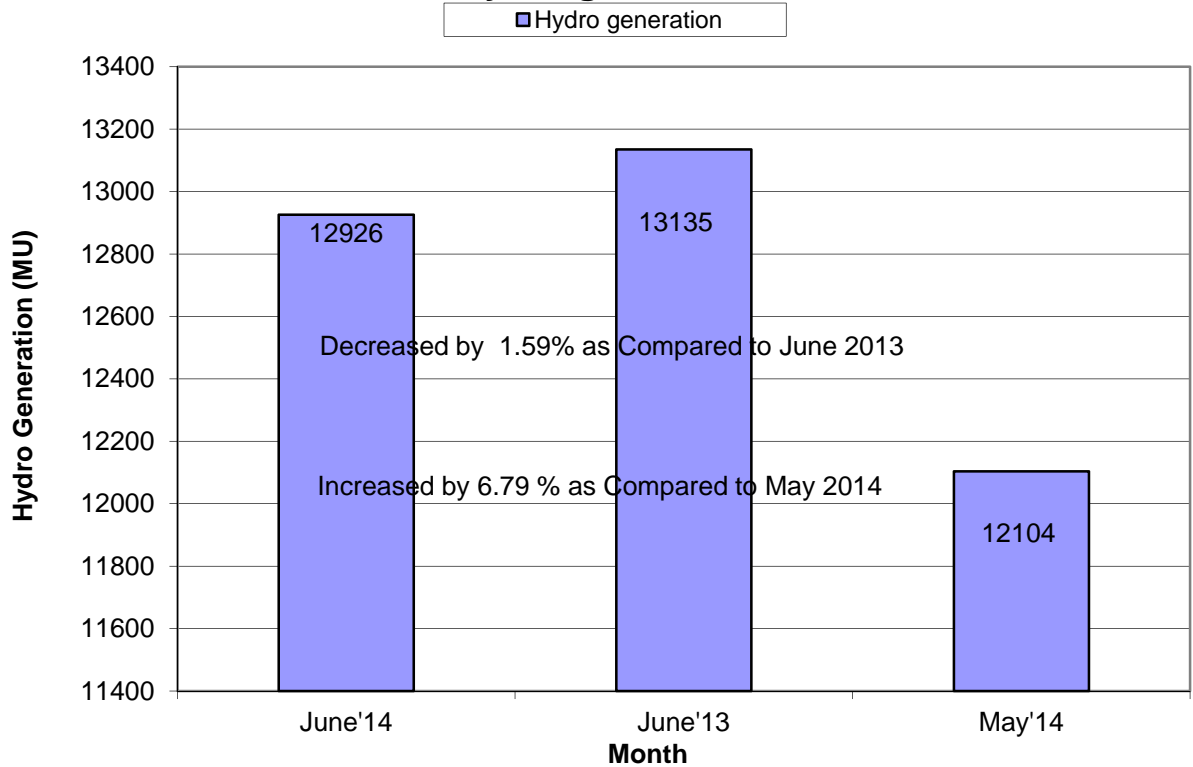


1. SUMMARY OF REPORT FOR THE MONTH OF JUNE 2014

Average Energy (MU/day)

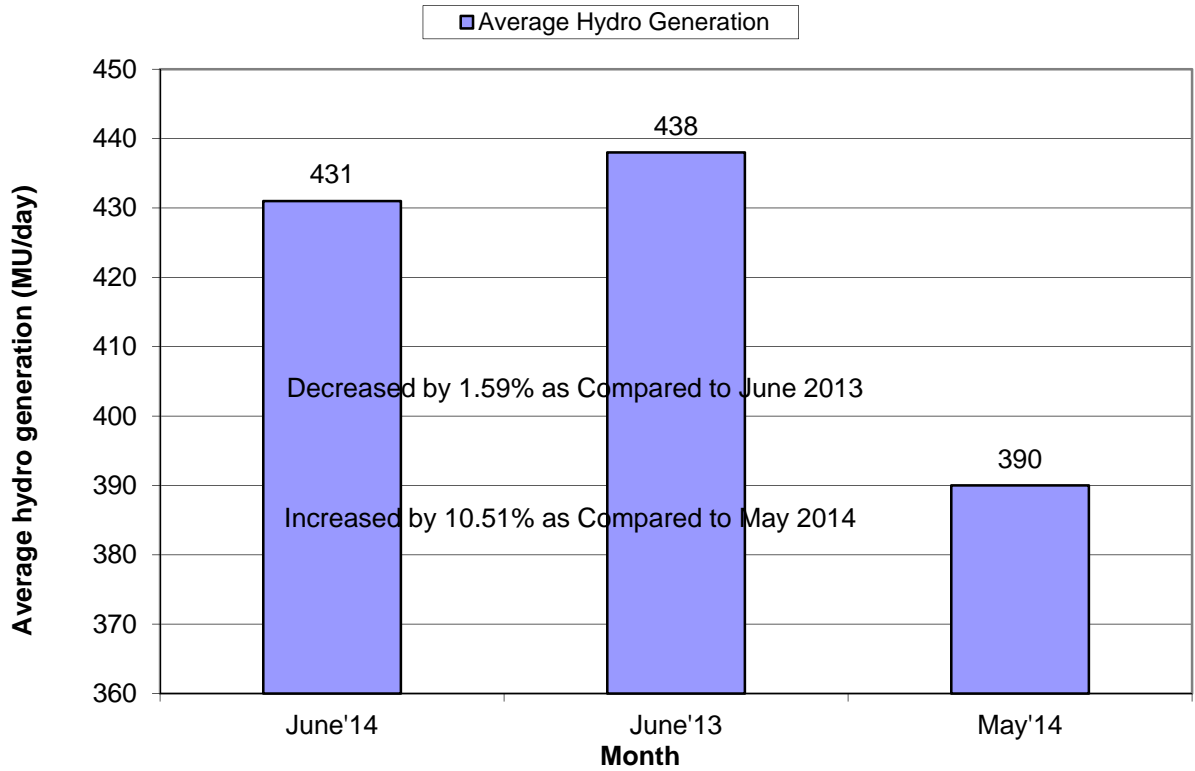


Hydro generation

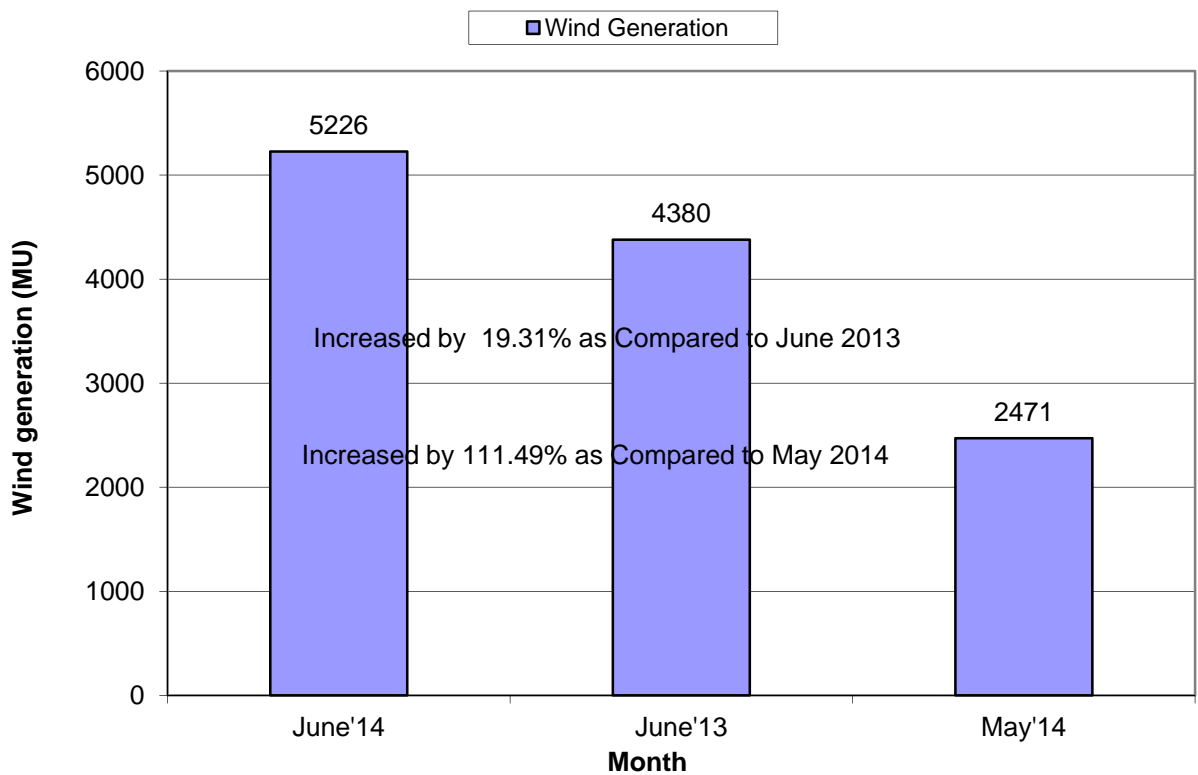


1. SUMMARY OF REPORT FOR THE MONTH OF JUNE 2014

Average Hydro Generation

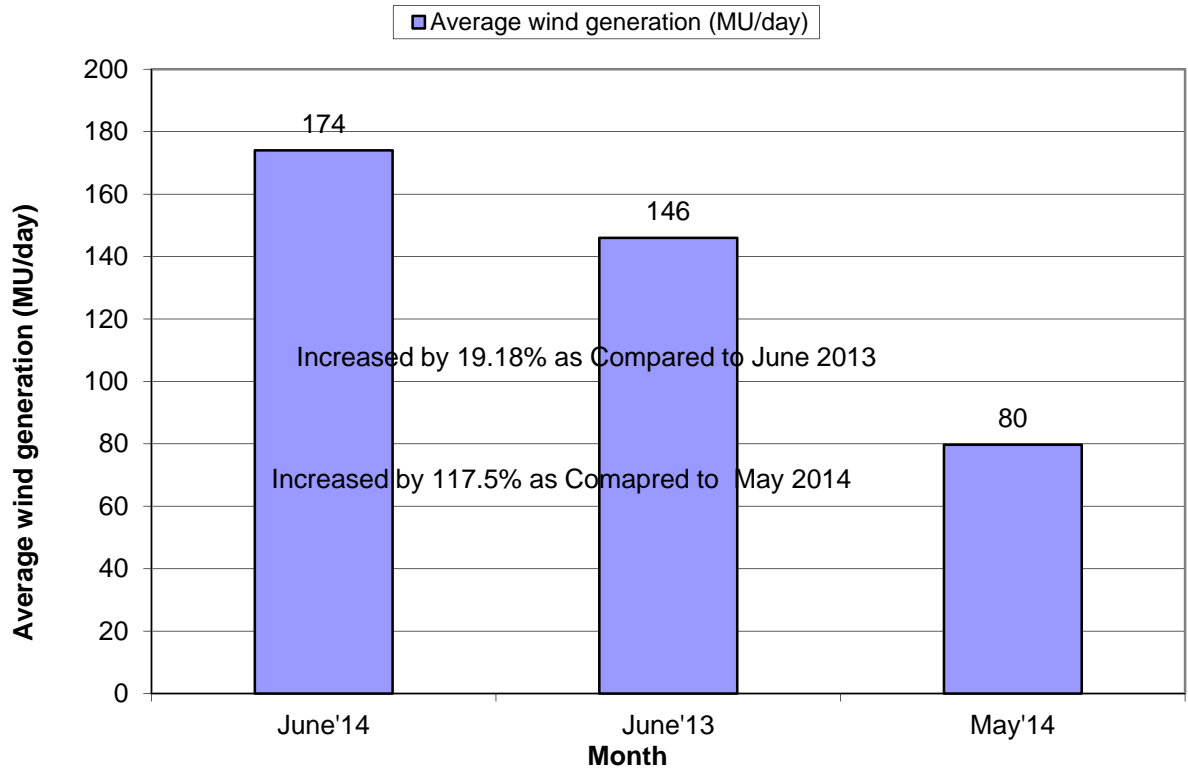


Wind Generation

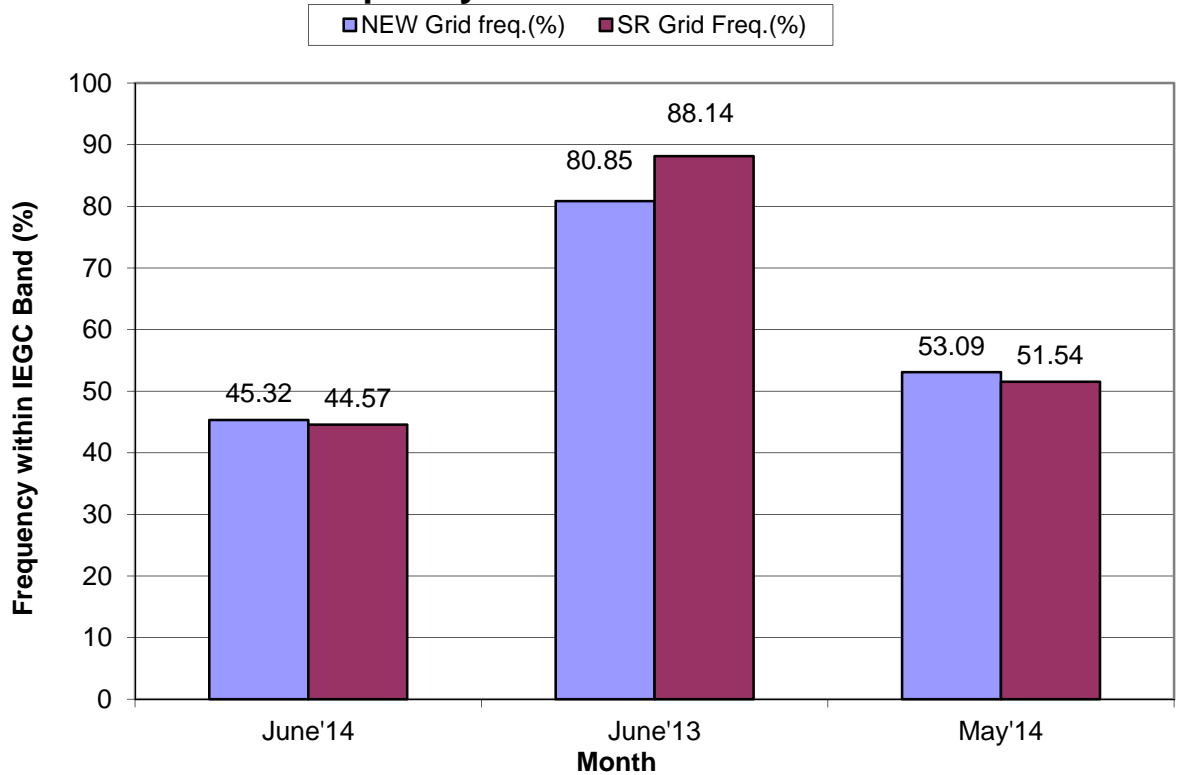


1. SUMMARY OF REPORT FOR THE MONTH OF JUNE 2014

Average wind generation (MU/day)



Frequency within IEGC Band



2. ALL INDIA REGIONWISE INSTALLED CAPACITY

As on 30.06.2014
(All figures are in MW)

SL. NO.	REGION	THERMAL				NUCLEAR	HYDRO	R.E.S. @ (MNRE)	TOTAL
		COAL	GAS	DSL	TOTAL				
1	NORTHERN	36798	5331	13	42138	1620	16529	5936	66223
2	WESTERN	59115	10915	17	70047	1840	7448	11271	90606
3	SOUTHERN	26583	4963	939	32485	1320	11398	13785	58987
4	EASTERN	25928	190	17	26135	0	4113	433	30681
5	NORTH EASTERN	60	1208	143	1411	0	1242	257	2910
6	ISLANDS	0	0	70	70	0	0	11	81
All India		148478	22608	1200	172286	4780	40730	31692	249488

Remarks: Data taken from CEA website

**3. राष्ट्रीय स्तर पर संध्याकालीन शिखर विधुत मांग पूर्ति
PEAK DEMAND MET AT NATIONAL LEVEL**

माह:- जून 2014

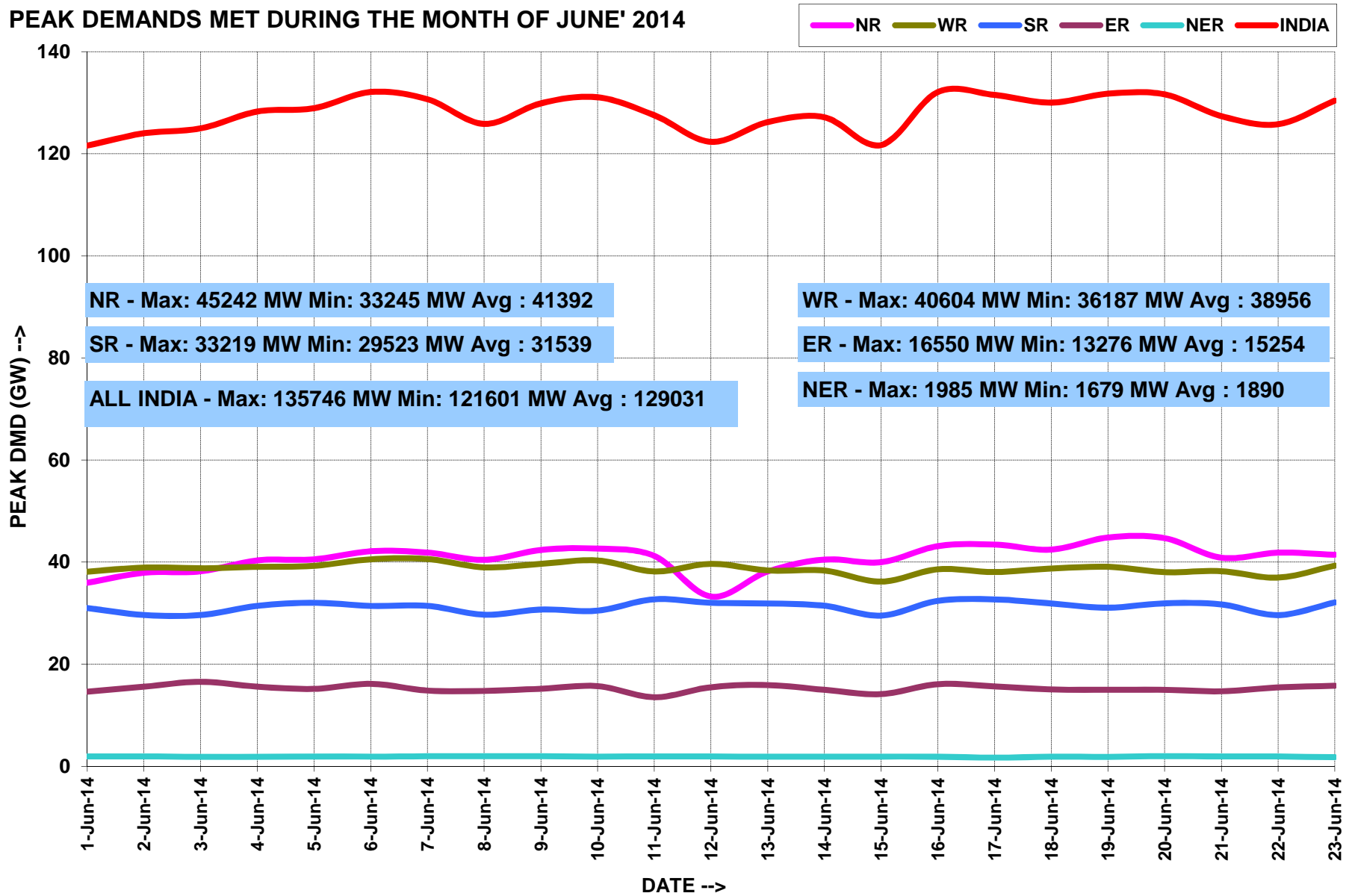
MONTH:- June 2014

सभी आंकड़े मेगावाट मे All figures in MW

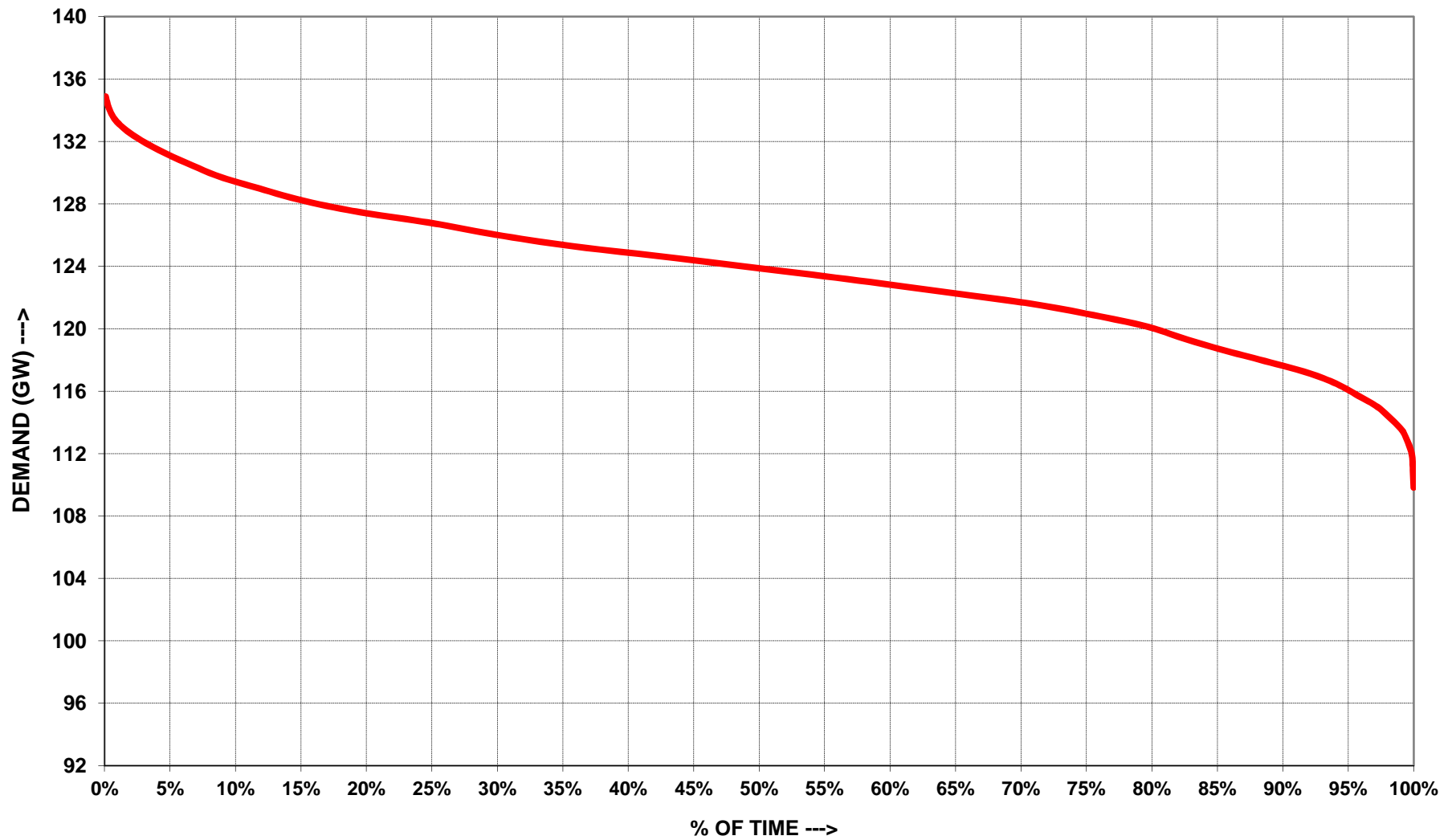
दिनांक Date	उत्तरी क्षे. NR	पश्चिमी क्षे. WR	दक्षिणी क्षे. SR	पूर्वी क्षे. ER	पूर्वोत्तर क्षे. NER	कुल TOTAL
01-Jun-14	35956	38103	30991	14635	1916	121601
02-Jun-14	37907	38934	29648	15582	1943	124014
03-Jun-14	38188	38798	29623	16550	1819	124978
04-Jun-14	40333	39061	31425	15606	1864	128289
05-Jun-14	40543	39267	32043	15164	1917	128934
06-Jun-14	42122	40554	31410	16153	1873	132112
07-Jun-14	41883	40604	31433	14828	1959	130707
08-Jun-14	40447	38973	29709	14774	1962	125865
09-Jun-14	42377	39662	30712	15183	1964	129898
10-Jun-14	42658	40334	30495	15699	1897	131083
11-Jun-14	41213	38169	32717	13536	1922	127557
12-Jun-14	33245	39663	32024	15505	1912	122348
13-Jun-14	38171	38375	31897	15914	1862	126219
14-Jun-14	40496	38335	31450	14978	1901	127160
15-Jun-14	39988	36187	29523	14140	1871	121709
16-Jun-14	43128	38594	32410	16078	1889	132099
17-Jun-14	43444	38061	32695	15647	1679	131526
18-Jun-14	42448	38738	31888	15057	1904	130035
19-Jun-14	44819	39085	31062	14975	1844	131785
20-Jun-14	44693	38045	31933	14987	1985	131643
21-Jun-14	40860	38216	31705	14692	1916	127389
22-Jun-14	41846	36972	29618	15453	1909	125798
23-Jun-14	41440	39312	32100	15781	1791	130424
24-Jun-14	43035	40158	32360	15940	1809	133302
25-Jun-14	42798	40129	32866	15379	1898	133070
26-Jun-14	43052	39530	32712	15953	1799	133046
27-Jun-14	43759	38845	33219	15080	1920	132823
28-Jun-14	42641	39257	32653	16088	1943	132582
29-Jun-14	43016	38201	30812	13276	1878	127183
30-Jun-14	45242	40510	33048	14992	1954	135746
उच्चतम MAXIMUM	45242	40604	33219	16550	1985	135746
निम्नतम MINIMUM	33245	36187	29523	13276	1679	121601
औसत AVERAGE	41392	38956	31539	15254	1890	129031
अब तक का उच्चतम All Time Max.	45242	41896	36126	16979	2013	135746
दिनांक Date	30.06.14	26.04.14	24.03.14	22.04.14	11.10.13	30.06.14

नोट : सभी आंकड़े 1900 बजे की मांगपूर्ति पर आधारित है। | Note: The above figures corresponds to value at 1900 Hrs

PEAK DEMANDS MET DURING THE MONTH OF JUNE' 2014



ALL INDIA LOAD DURATION CURVE FOR JUNE' 2014



4. राष्ट्रीय स्तर पर विद्युत ऊर्जा आपूर्ति ENERGY MET AT NATIONAL LEVEL

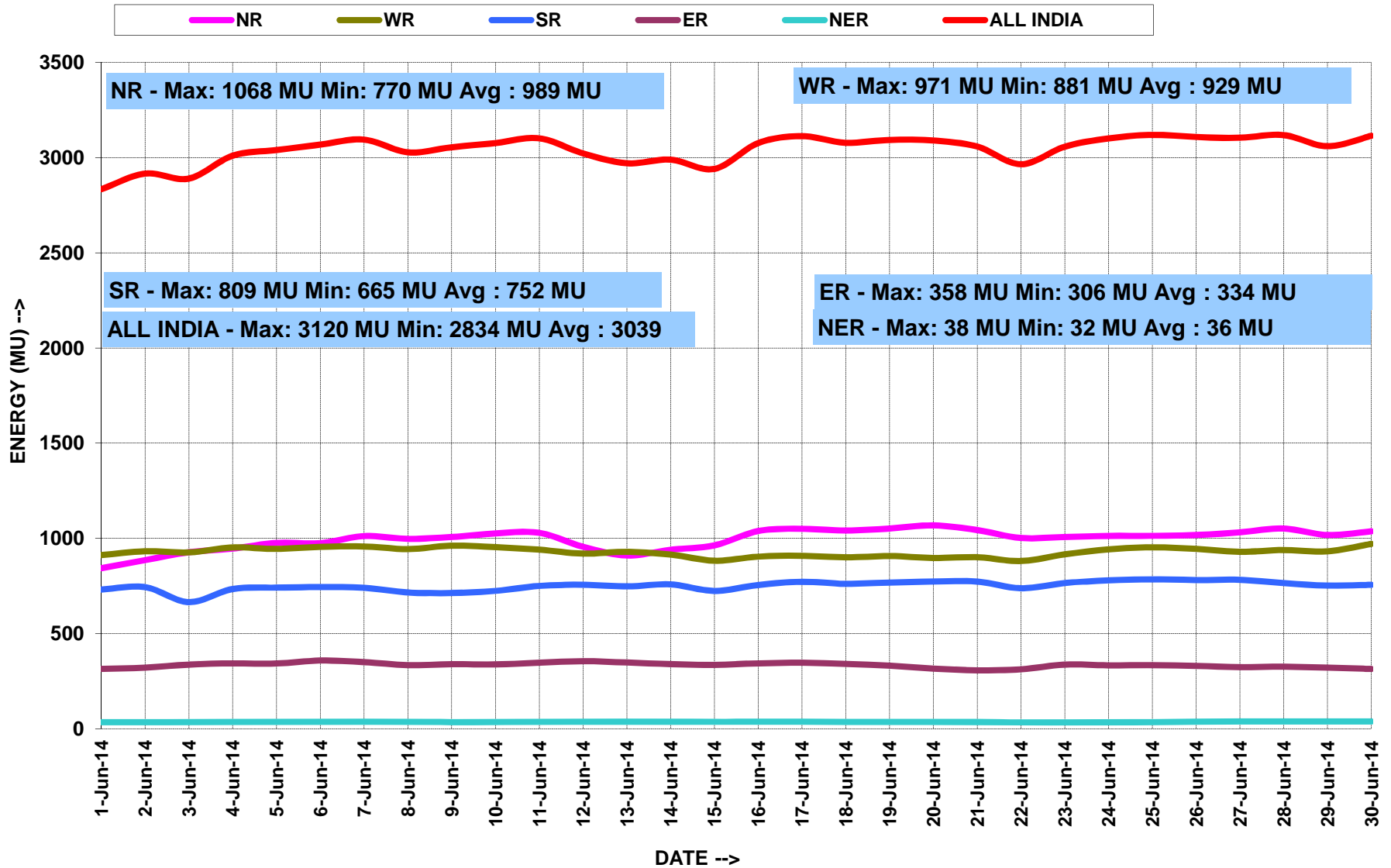
माह:- जून 2014

MONTH:- June 2014

सभी आंकड़े मिलियन यूनिट में All figures in MU

दिनांक Date	उत्तरी क्षे. NR	पश्चिमी क्षे. WR	दक्षिणी क्षे. SR	पूर्वी क्षे. ER	पूर्वोत्तर क्षे. NER	कुल TOTAL
01-Jun-14	843	912	731	314	34	2834
02-Jun-14	885	932	744	321	34	2917
03-Jun-14	927	926	665	337	35	2890
04-Jun-14	946	952	734	343	35	3011
05-Jun-14	976	945	741	342	36	3040
06-Jun-14	975	956	744	358	36	3069
07-Jun-14	1012	958	740	350	36	3095
08-Jun-14	998	943	716	334	37	3028
09-Jun-14	1007	961	713	338	35	3055
10-Jun-14	1026	954	724	338	35	3077
11-Jun-14	1029	940	750	346	36	3102
12-Jun-14	956	920	756	355	36	3023
13-Jun-14	910	929	748	348	37	2971
14-Jun-14	940	915	758	339	37	2990
15-Jun-14	964	883	724	336	35	2941
16-Jun-14	1039	904	755	343	37	3077
17-Jun-14	1050	908	772	347	36	3113
18-Jun-14	1041	900	761	341	36	3078
19-Jun-14	1052	907	768	331	36	3094
20-Jun-14	1068	897	773	316	36	3090
21-Jun-14	1044	901	773	306	35	3058
22-Jun-14	1002	881	738	312	32	2965
23-Jun-14	1008	916	765	337	33	3058
24-Jun-14	1013	942	779	333	34	3101
25-Jun-14	1013	953	785	334	35	3120
26-Jun-14	1017	944	781	330	36	3109
27-Jun-14	1032	929	782	324	38	3105
28-Jun-14	1051	938	765	326	38	3119
29-Jun-14	1018	932	752	321	38	3060
30-Jun-14	1037	971	756	314	37	3115
कुल TOTAL	29877	27851	22492	10012	1071	91303
उच्चतम MAXIMUM	1068	971	785	358	38	3120
निम्नतम MINIMUM	843	881	665	306	32	2834
औसत AVERAGE	996	928	750	334	36	3043
अब तक का उच्चतम All Time Max.	1068	1001	845	367	38	3120
दिनांक Date	20.06.14	29.04.14	26.03.14	26.04.14	22.09.13	25.06.14

ENERGY MET DURING THE MONTH OF JUNE' 2014



5.वर्ष 2014-15 के लिए आवृत्ति रूपरेखा FREQUENCY PROFILE FOR YEAR 2014-15

राष्ट्रीय ग्रिड NATIONAL GRID

फ्रिक्वेंसी रूपरेखा (Hz)		<49.7	49.0-49.9	<49.9	49.9-50.05	>50.05		उच्चतम फ्रिक्वेंसी	निम्नतम फ्रिक्वेंसी	औसत फ्रिक्वेंसी
% समय	Apr-14	1.84	34.20	36.04	50.5	13.46		50.53	49.49	49.94

न्यु ग्रिड NEW GRID

% समय	May-14	0.93	22.39	22.39	53.09	24.52		50.56	49.41	49.98
	Jun-14	4.99	37.27	37.27	45.32	17.41		50.65	49.32	49.93

द. क्षे. ग्रिड SR GRID*

% समय	May-14	1.46	26.88	26.88	51.54	21.58		50.56	49.41	49.97
	Jun-14	6.25	40.68	40.68	43.93	15.40		50.65	49.32	49.92

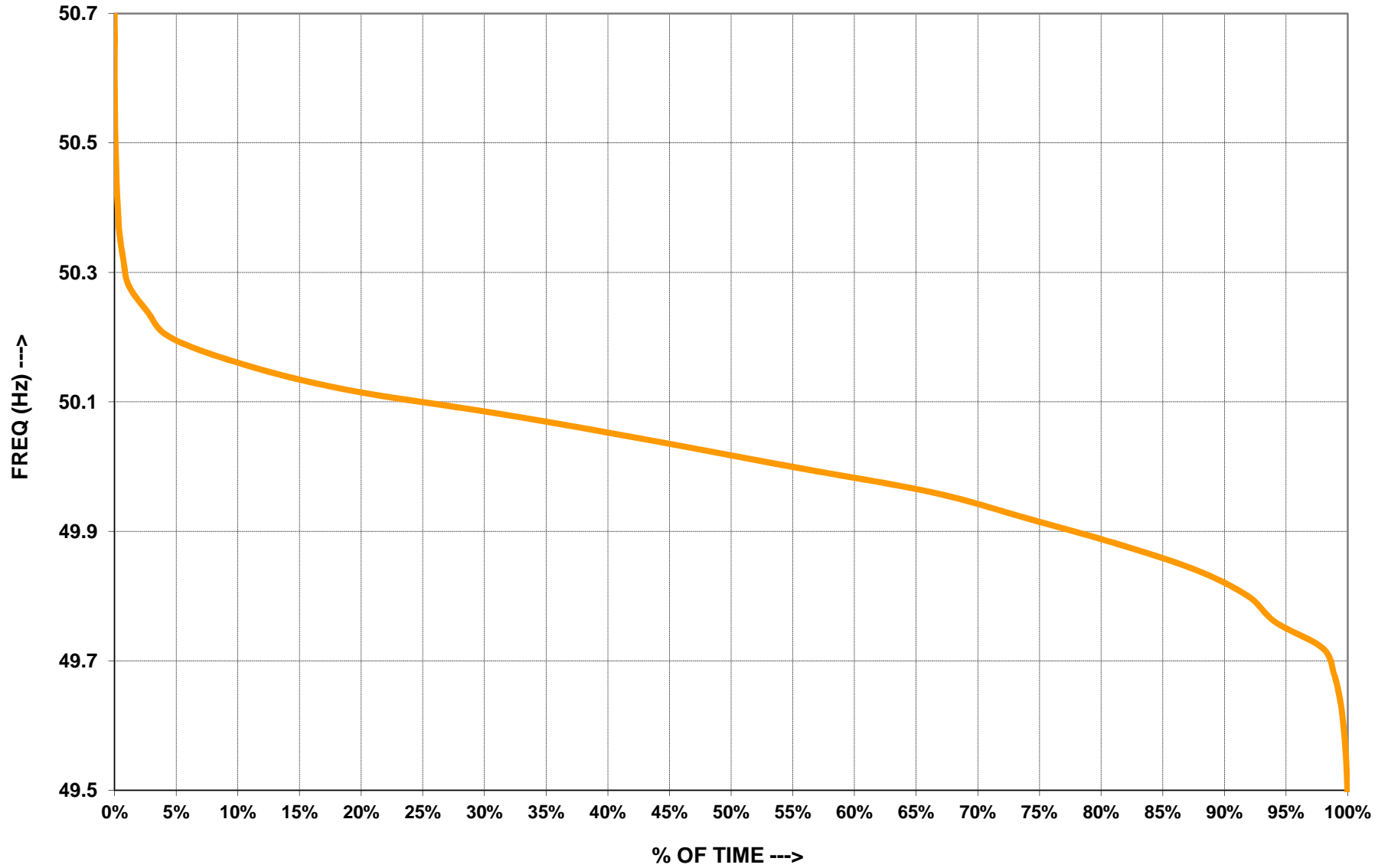
* Desynchronisation of NEW & SR Grid on following day occurred:- (i) On 29.05.14 from 17:01 hrs to 17:35 hrs due to tripping of 765 kV Sholapur - Raichur , (ii) On 30.05.14 from 10:36 hrs to 14:37 hrs due to shut down of 765 kV Sholapur - Raichur, (iii) On 05.06.14 from 19:10 hrs to 20:01 hrs , (iv) On 17.06.14 from 10:08 hrs to 21:06 hrs, (v) On 25.06.14 from 06:12 hrs to 20:12 hrs

5.1 जून 2014 के लिए आवृत्ति रूपरेखा FREQUENCY PROFILE FOR JUNE' 2014

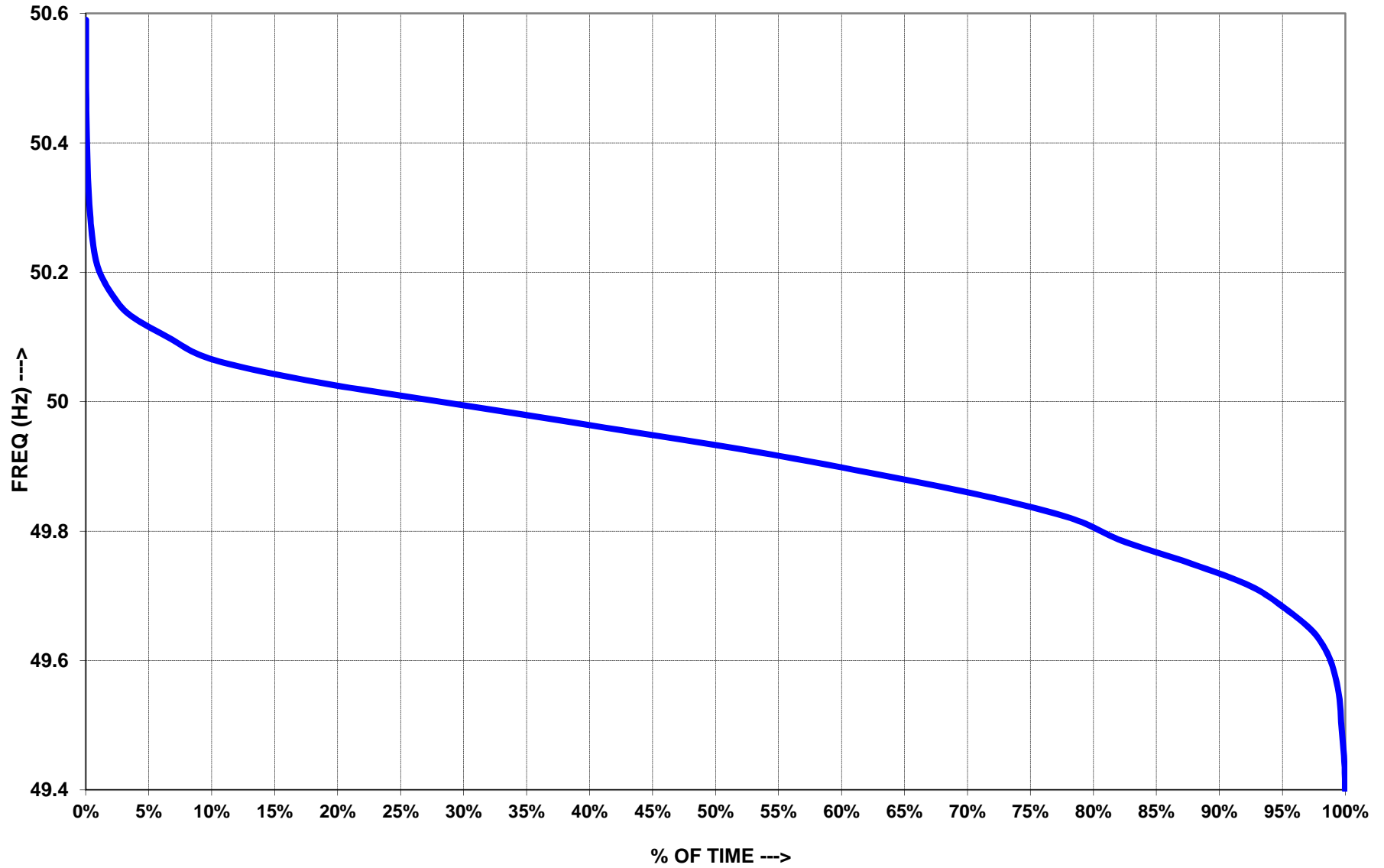
राष्ट्रीय गिड NATIONAL GRID									
फ्रिक्वेंसी रूपरेखा (Hz)	<49.0	49.0-49.9	>49.9	49.9-50.05	>50.05	उच्चतम फ्रिक्वेंसी	निम्नतम फ्रिक्वेंसी	औसत फ्रिक्वेंसी	
% समय	01-Jun-14	0.00	18.88	18.88	41.01	40.11	50.49	49.51	50.01
	02-Jun-14	0.00	47.45	47.45	42.84	9.71	50.26	49.45	49.89
	03-Jun-14	0.00	57.14	57.14	36.94	5.91	50.21	49.47	49.86
	04-Jun-14	0.00	50.38	50.38	40.95	8.67	50.21	49.46	49.89
	05-Jun-14	0.00	40.19	40.19	49.92	9.90	50.20	49.52	49.92
	06-Jun-14	0.00	30.28	30.28	55.05	14.67	50.22	49.47	49.94
	07-Jun-14	0.00	16.35	16.35	61.25	22.40	50.29	49.63	49.98
	08-Jun-14	0.00	15.02	15.02	60.01	24.97	50.30	49.58	49.99
	09-Jun-14	0.00	41.46	41.46	43.29	15.24	50.28	49.57	49.92
	10-Jun-14	0.00	62.99	62.99	32.92	4.10	50.16	49.35	49.84
	11-Jun-14	0.00	45.70	45.70	43.30	11.00	50.40	49.47	49.91
	12-Jun-14	0.00	39.40	39.40	43.90	16.70	50.65	49.54	49.94
	13-Jun-14	0.00	48.50	48.50	36.10	15.40	50.26	49.47	49.90
	14-Jun-14	0.00	41.44	41.44	45.23	13.33	50.22	49.59	49.92
	15-Jun-14	0.00	23.04	23.04	50.70	26.26	50.42	49.67	49.98
	16-Jun-14	0.00	42.55	42.55	44.26	13.19	50.17	49.60	49.91
	17-Jun-14	0.00	34.41	34.41	47.50	18.09	50.24	49.40	49.93
	18-Jun-14	0.00	44.57	44.57	43.93	11.50	50.24	49.43	49.91
	19-Jun-14	0.00	29.55	29.55	54.87	15.58	50.26	49.47	49.95
	20-Jun-14	0.00	20.44	20.44	48.70	30.86	50.33	49.65	49.99
	21-Jun-14	0.00	2.28	2.28	49.55	48.17	50.49	49.79	50.05
	22-Jun-14	0.00	6.47	6.47	56.89	36.64	50.32	49.76	50.03
	23-Jun-14	0.00	24.92	24.92	52.51	22.57	50.35	49.52	49.96
	24-Jun-14	0.00	39.27	39.27	50.06	10.67	50.21	49.55	49.92
	25-Jun-14	0.00	38.34	38.34	46.83	14.83	50.28	49.46	49.93
	26-Jun-14	0.00	63.38	63.38	31.10	5.52	50.17	49.39	49.85
	27-Jun-14	0.00	85.66	85.66	12.50	1.84	50.16	49.32	49.79
	28-Jun-14	0.00	65.95	65.95	28.29	5.76	50.30	49.55	49.86
	29-Jun-14	0.00	16.41	16.41	54.27	29.32	50.37	49.65	50.00
	30-Jun-14	0.00	25.60	25.60	55.09	19.31	50.41	49.67	49.97
द. क्षे. गिड SR GRID*									
% समय	05-Jun-14	0.00	42.99	42.99	47.99	9.03	50.23	49.44	49.91
	17-Jun-14	0.00	37.29	37.29	46.74	15.97	50.22	49.40	49.92
	25-Jun-14	0.00	59.51	59.51	30.49	10.00	50.45	49.46	49.88

* For remaining days SR Grid remained in synchronisation with National Grid

NEW GRID FREQUENCY DURATION CURVE FOR JUNE' 2014



SOUTHERN GRID FREQUENCY DURATION CURVE FOR JUNE' 2014



**6.राष्ट्रीय स्तर पर जल विद्युत उत्पादन
HYDRO GENERATION AT NATIONAL LEVEL**

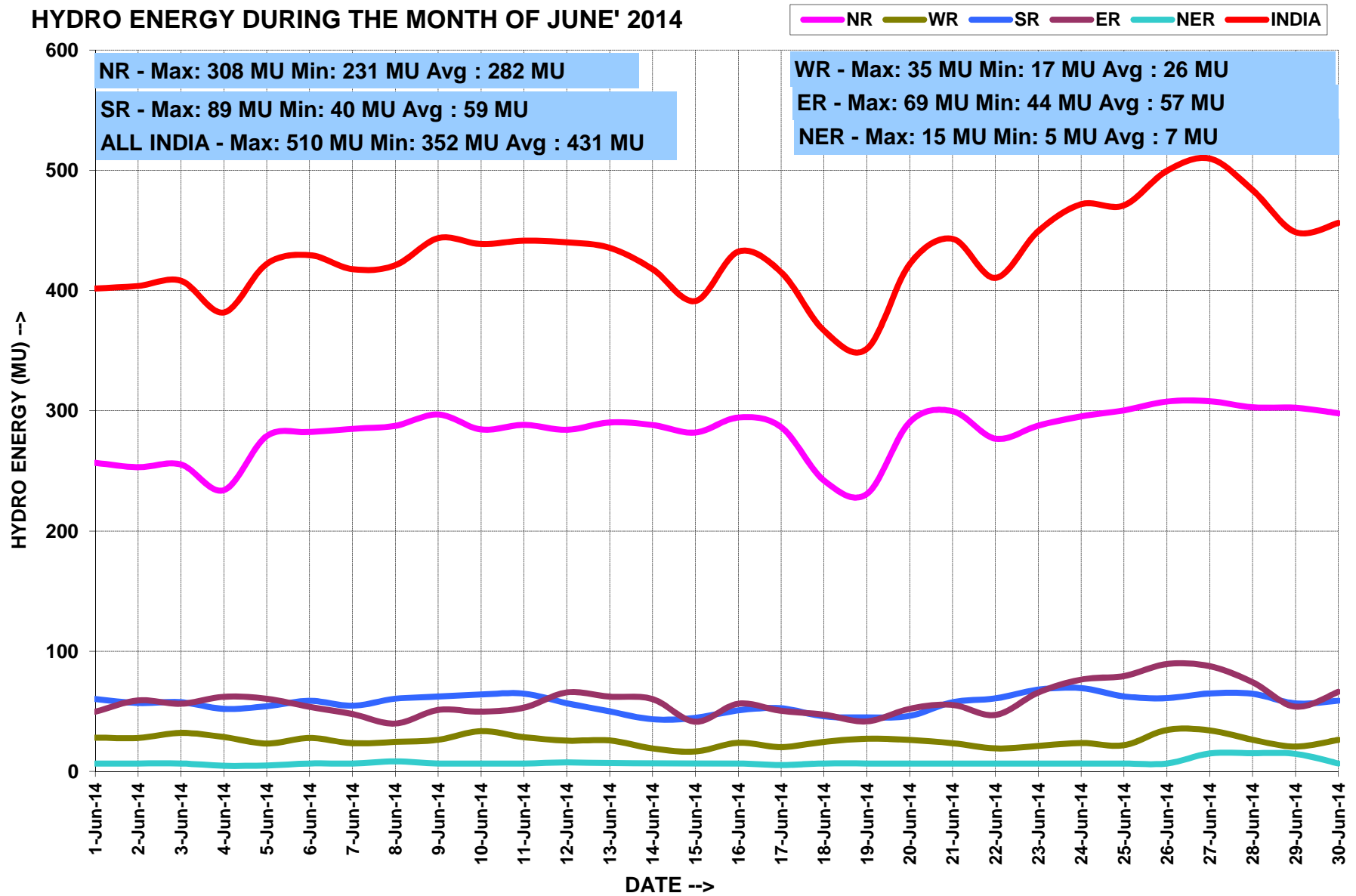
माह:- जून 2014

MONTH:- June 2014

सभी आंकड़े मिलियन यूनिट में All figures in MU

दिनांक Date	ऊत्तरी क्षे. NR	पश्चिमी क्षे. WR	दक्षिणी क्षे. SR	पूर्वी क्षे. ER	पूर्वोत्तर क्षे. NER	कुल TOTAL
01-Jun-14	257	28	50	60	7	402
02-Jun-14	253	28	59	57	7	404
03-Jun-14	255	32	56	58	7	408
04-Jun-14	234	29	62	52	5	382
05-Jun-14	279	23	61	54	5	422
06-Jun-14	282	28	54	59	7	430
07-Jun-14	285	24	48	55	7	418
08-Jun-14	288	25	40	61	8	421
09-Jun-14	297	26	51	62	7	444
10-Jun-14	285	34	50	64	7	439
11-Jun-14	288	29	53	65	7	442
12-Jun-14	284	26	66	57	8	440
13-Jun-14	290	26	62	50	7	436
14-Jun-14	288	19	60	44	7	418
15-Jun-14	282	17	41	45	7	391
16-Jun-14	294	24	56	51	7	432
17-Jun-14	287	20	51	53	5	415
18-Jun-14	242	25	47	46	7	367
19-Jun-14	231	27	42	45	7	352
20-Jun-14	291	26	52	46	7	422
21-Jun-14	300	24	55	58	7	443
22-Jun-14	277	19	47	61	7	411
23-Jun-14	288	21	66	68	7	449
24-Jun-14	295	24	77	69	7	472
25-Jun-14	300	22	79	63	7	471
26-Jun-14	308	35	89	61	7	500
27-Jun-14	308	34	88	65	15	510
28-Jun-14	303	26	74	65	15	484
29-Jun-14	303	21	54	57	15	449
30-Jun-14	298	26	66	59	7	456
कुल TOTAL	8471	767	1757	1707	224	12926
उच्चतम MAXIMUM	308	35	89	69	15	510
निम्नतम MINIMUM	231	17	40	44	5	352
औसत AVERAGE	282	26	59	57	7	431
अब तक का उच्चतम All Time Max.	319	142	202	91	27	712
दिनांक Date	22.08.13	29.09.11	08.08.13	07.09.13	14.09.10	27.08.13

HYDRO ENERGY DURING THE MONTH OF JUNE' 2014



7. राष्ट्रीय स्तर पर पवन ऊर्जा उत्पादन
WIND GENERATION AT NATIONAL LEVEL
माह:- जून 2014 **MONTH:- June 2014**

सभी आंकड़े मिलियन यूनिट में All figures in MU

दिनांक Date	ऊत्तरी क्षे. NR	पश्चिमी क्षे. WR	दक्षिणी क्षे. SR	पूर्वी क्षे. ER	पूर्वोत्तर क्षे. NER	कुल TOTAL
01-Jun-14	19.2	40.0	76.3	135.5
02-Jun-14	19.3	26.5	85.6	131.4
03-Jun-14	14.8	30.4	55.5	100.7
04-Jun-14	8.4	35.9	73.0	117.3
05-Jun-14	6.2	41.0	78.3	125.5
06-Jun-14	14.5	45.4	85.5	145.4
07-Jun-14	14.5	47.0	92.0	153.5
08-Jun-14	14.2	58.4	103.6	176.2
09-Jun-14	14.4	55.4	91.4	161.2
10-Jun-14	15.4	35.6	86.6	137.6
11-Jun-14	14.4	48.2	108.7	171.3
12-Jun-14	22.9	54.6	108.4	185.9
13-Jun-14	21.3	72.9	103.8	197.9
14-Jun-14	19.4	64.0	100.8	184.2
15-Jun-14	25.8	57.9	104.8	188.5
16-Jun-14	29.1	40.2	100.4	169.7
17-Jun-14	27.9	53.9	116.8	198.6
18-Jun-14	25.8	47.6	112.0	185.4
19-Jun-14	28.0	59.0	118.8	205.8
20-Jun-14	24.4	85.1	119.6	229.1
21-Jun-14	25.7	98.4	106.8	230.9
22-Jun-14	23.2	102.8	92.6	218.6
23-Jun-14	24.3	101.8	105.8	231.9
24-Jun-14	22.4	98.8	118.7	239.9
25-Jun-14	13.4	92.8	125.1	231.3
26-Jun-14	14.2	65.3	89.6	169.1
27-Jun-14	18.8	47.4	63.0	129.2
28-Jun-14	24.1	58.9	55.9	138.9
29-Jun-14	31.8	70.7	76.3	178.8
30-Jun-14	2.2	82.2	72.3	156.7
कुल TOTAL	580	1818	2828	5226
उच्चतम MAXIMUM	32	103	125	240
निम्नतम MINIMUM	2	26	56	101
औसत AVERAGE	19	61	94	174
अब तक का उच्चतम All Time Max.	34.9	102.8	125.1	223.8
दिनांक Date	12.06.12	22.06.14	25.06.14	03.08.12

8. ACTUAL POWER SUPPLY POSITION - June 2014

REGION	STATE	Requirement/Availability in MU/DAY			Requirement/Availability in MU				Peak Demand/Peak Met in MW			
		Requirement	Energy met	Surplus(+)/ Deficit(-)	Requirement	Energy met	Surplus(+)/ Deficit(-)	% Shortage	Requirement	Peak Demand	Surplus(+)/ Deficit(-)	% Shortage
NR	Chandigarh	6	6	0	188	188	0	0.0	352	352	0	0.0
	Delhi	107	107	-1	3330	3309	-21	-0.6	5612	5490	-122	-2.2
	Haryana	149	148	0	4604	4594	-10	-0.2	8056	8056	0	0.0
	H.P.	25	25	0	768	764	-5	-0.6	1281	1281	0	0.0
	J&K	36	34	-2	1112	1059	-53	-4.7	2312	1850	-462	-20.0
	Punjab	191	191	-1	5936	5915	-21	-0.4	10091	10091	0	0.0
	Rajasthan	190	190	-1	5897	5878	-19	-0.3	9131	9131	0	0.0
	U.P.	312	269	-43	9685	8351	-1334	-13.8	15670	11535	-4135	-26.4
	Uttarakhand	37	36	-1	1145	1121	-24	-2.1	1833	1833	0	0.0
	NFF/Railway	2	2	0	69	69	0	0.0	100	100	0	0.0
TOTAL	1063	1008	-55	32947	31247	-1700	-5.2	51112	45242	-5870	-11.5	
WR	Gujarat	283	283	0	8502	8487	-15	-0.2	13906	13755	-151	-1.1
	Madhya Pradesh	149	148	-1	4463	4442	-20	-0.5	7434	7120	-314	-4.2
	Chhattisgarh	66	65	-1	1973	1956	-17	-0.9	3473	3472	-1	0.0
	Maharashtra	408	399	-9	12229	11965	-263	-2.2	19755	19452	-303	-1.5
	Goa	9	9	0	263	261	-2	-0.8	475	475	0	0.0
	D&D	6	6	0	181	181	0	0.0	298	298	0	0.0
	DNH	14	14	0	428	425	-2	-0.5	677	677	0	0.0
	ESIL	9	9	0	281	279	-1	-0.5	535	535	0	0.0
TOTAL	944	933	-11	28318	27997	-321	-1.1	43802	42934	-868	-2.0	
SR	AP-TRANSCO	144	129	-15	4323	3859	-464	-10.7	6199	6146	-53	-0.9
	TG - TRANSCO	124	117	-7	3723	3515	-208	-5.6	5735	5661	-74	-1.3
	KPTCL	173	160	-14	5197	4785	-412	-7.9	8849	8261	-588	-6.6
	KSEB	60	58	-2	1799	1725	-74	-4.1	3527	3352	-174	-4.9
	TNEB	283	280	-2	8479	8412	-67	-0.8	13804	13771	-33	-0.2
	PONDICHERRY	7	7	0	209	206	-3	-1.4	344	344	0	-0.1
	TOTAL	796	762	-34	23871	22851	-1021	-4.3	36521	34578	-1943	-5.3
ER	Bihar	44	46	2	1312	1374	62	4.7	2650	2433	-217	-8.2
	JSEB	22	20	-1	650	612	-38	-5.8	1050	1033	-17	-1.6
	DVC	53	57	5	1575	1711	136	8.6	2625	2630	5	0.2
	Odisha	74	75	1	2232	2249	17	0.8	3750	3814	64	1.7
	West Bengal	137	146	8	4118	4366	248	6.0	7500	7602	102	1.4
TOTAL	330	344	14	9887	10312	425	4.3	17155	17078	-77	-0.4	
NER	Arunachal Pradesh	2	2	0	49	47	-2	-4.8	111	110	-1	-0.7
	Assam	25	23	-2	743	684	-58	-7.9	1343	1215	-129	-9.6
	Manipur	2	2	0	48	46	-3	-5.6	118	117	-1	-0.7
	MeSEB	5	4	-1	155	126	-29	-18.8	294	289	-5	-1.6
	Mizoram	1	1	0	37	35	-2	-5.2	75	74	-1	-1.9
	Nagaland	2	2	0	48	46	-2	-4.6	115	111	-4	-3.8
	Tripura	3	3	0	97	91	-6	-6.4	235	230	-5	-2.1
TOTAL	39	36	-3	1178	1075	-103	-8.8	2292	2146	-146	-6.4	
ALL INDIA		3171	3043	-89	96202	91303	-2665	-5.1	150882	135746	-15136	-10.0

9. ENERGY COMPARISON OF JUNE 2014 Vs JUNE 2013

REGION	STATE	Energy Requirement (MU)					Energy Met (MU)				
		Jun-13	Jun-14	Difference	% Change	Average MU/day for Jun-14	Jun-13	Jun-14	Difference	% Change	Average for MU/day Jun-14
NR	Chandigarh	162	188	26	16	6.3	162	188	27	16	6.3
	Delhi	2965	3330	365	12	111.0	2964	3309	345	12	110.3
	Haryana	4154	4604	449	11	153.5	4146	4594	447	11	153.1
	H.P.	730	768	39	5	25.6	722	764	42	6	25.5
	J&K	883	1112	229	26	37.1	832	1059	227	27	35.3
	Punjab	4981	5936	955	19	197.9	4871	5915	1044	21	197.2
	Rajasthan	4766	5897	1131	24	196.6	4745	5878	1133	24	195.9
	U.P.	7619	9685	2066	27	322.8	6791	8351	1561	23	278.4
	Uttarakhand	957	1145	189	20	38.2	933	1121	189	20	37.4
	NFF/Railway	68	69	1	1	2.3	68	69	1	1	2.3
	TOTAL	27284	32947	5664	21	1098.2	26232	31247	5016	19	1041.6
WR	Gujarat	6853	8502	1649	24	283.4	6848	8487	1639	24	282.9
	Madhya Pradesh	3372	4463	1091	32	148.8	3371	4442	1071	32	148.1
	Chhattisgarh	1760	1973	213	12	65.8	1751	1956	204	12	65.2
	Maharashtra	9540	12229	2688	28	407.6	9404	11965	2561	27	398.8
	Goa	221	263	42	19	8.8	221	261	40	18	8.7
	D&D	177	181	5	3	6.0	176	181	5	3	6.0
	DNH	413	428	14	3	14.3	412	425	13	3	14.2
	ESIL		281			9.4		279			9.3
	TOTAL	22336	28318	5982	27	943.9	22185	27997	5812	26	933.2
SR	AP-TRANSCO	7531	4323	515	7	144.1	6673	3859	701	11	128.6
	TG - TRANSCO		3723					3515			
	KPTCL	4600	5197	597	13	173.2	4136	4785	649	16	159.5
	KSEB	1524	1799	275	18	60.0	1470	1725	255	17	57.5
	TNEB	7755	8479	724	9	282.6	7466	8412	946	13	280.4
	PONDY	195	209	14	7	7.0	193	206	13	7	6.9
		TOTAL	21606	23871	2265	10	795.7	19938	22851	2913	15
ER	Bihar	1250	1312	62	5	43.7	1194	1374	180	15	45.8
	JSEB	700	650	-50	-7	21.7	543	612	69	13	20.4
	DVC	1570	1575	5	0	52.5	1663	1711	48	3	57.0
	Odisha	2230	2232	2	0	74.4	2016	2249	233	12	75.0
	West Bengal	4380	4118	-262	-6	137.3	4021	4366	345	9	145.5
		TOTAL	10130	9887	-243	-2	329.6	9437	10312	875	9
NER	Arunachal Pradesh	40	49	10	25	1.6	37	47	10	26	1.6
	Assam	687	743	55	8	24.8	648	684	36	6	22.8
	Manipur	45	48	3	7	1.6	43	46	3	7	1.5
	MeSEB	146	155	9	6	5.2	130	126	-4	-3	4.2
	Mizoram	34	37	3	9	1.2	32	35	3	9	1.2
	Nagaland	47	48	1	2	1.6	45	46	1	2	1.5
	Tripura	92	97	6	6	3.2	86	91	5	6	3.0
	TOTAL	1091	1178	87	8	39.3	1022	1075	53	5	35.8
ALL INDIA		82447	96202	13755	17	3206.7	78814	91303	14668	19	3043.4

10. DEMAND COMPARISON OF JUNE 2014 Vs JUNE 2013

REGION	STATE	Peak Requirement (MW)				Peak Met (MW)			
		Jun-13	Jun-14	Difference	% Change	Jun-13	Jun-14	Difference	% Change
NR	Chandigarh	345	300	-45	-13.0	352	352	0	0.0
	Delhi	5714	5612	-102	-1.8	5653	5490	-163	-2.9
	Haryana	7767	8056	289	3.7	7767	8056	289	3.7
	H.P.	1244	1281	37	3.0	1244	1281	37	3.0
	J&K	2250	2312	62	2.8	1678	1850	172	10.3
	Punjab	9519	10091	572	6.0	8201	10091	1890	23.0
	Rajasthan	7626	9131	1505	19.7	7599	9131	1532	20.2
	U.P.	12501	15670	3169	25.3	11711	11535	-176	-1.5
	Uttarakhand	1709	1833	124	7.3	1709	1833	124	7.3
	NFF/Railway	104	100	-4	-3.8	104	100	-4	-3.8
TOTAL	44450	51112	6662	15.0	41606	45242	3636	8.7	
WR	Gujarat	12000	13906	1906	15.9	11987	13755	1768	14.7
	Madhya Pradesh	7817	7434	-383	-4.9	7832	7120	-712	-9.1
	Chhattisgarh	2917	3473	556	19.1	2793	3472	679	24.3
	Maharashtra	16679	19755	3076	18.4	16075	19452	3377	21.0
	Goa	398	475	77	19.3	384	475	91	23.7
	D&D	248	298	50	20.2	247	298	51	20.6
	DNH	598	677	79	13.1	596	677	81	13.5
	ESIL		535				535		
	TOTAL	37566	43802	6236	16.6	36657	42934.36	6277	17.1
SR	AP-TRANSCO	11755	6199	179	1.5	10723	6146	1084	10.1
	TG - TRANSCO		5735				5661		
	KPTCL	8397	8849	452	5.4	7438	8261	823	11.1
	KSEB	3072	3527	455	14.8	2927	3352	425	14.5
	TNEB	12469	13804	1335	10.7	11854	13771	1917	16.2
	PONDY	348	344	-4	-1.1	323	344	21	6.5
	TOTAL	35256	36521	1265	3.6	32181	34578	2397	7.4
ER	Bihar	2650	2650	0	0.0	2029	2433	404	19.9
	JSEB	1130	1050	-80	-7.1	938	1033	95	10.1
	DVC	2615	2625	10	0.4	2622	2630	8	0.3
	Odisha	3650	3750	100	2.7	3531	3814	283	8.0
	West Bengal	7380	7500	120	1.6	7121	7602	481	6.8
	TOTAL	17005	17155	150	0.9	15999	17078	1079	6.7
NER	Arunachal Pradesh	111	111	0	0.1	106	110	4	3.8
	Assam	1257	1343	86	6.8	1118	1215	97	8.6
	Manipur	117	118	1	0.5	116	117	1	1.2
	MeSEB	272	294	22	8.1	271	289	18	6.8
	Mizoram	70	75	5	7.4	68	74	6	8.8
	Nagaland	99	115	17	17.1	96	111	15	15.6
	Tripura	225	235	10	4.4	220	230	10	4.6
	TOTAL	2151	2292	141	6.5	1995	2146	152	7.6
ALL INDIA		136428	150882	14454	10.6	118235	135746	17511	15

11. SCHEDULE AND DRAWAL OF CONSTITUENTS - June 2014

REGION	STATE	SCHEDULE (MU)	ACTUAL DRAWAL (MU)	Over drawal(+)/ Under Drawal(-) (MU)	% OD/UD	SCHEDULE (MU/DAY)	ACTUAL DRAWAL (MU/DAY)	Over drawal(+)/ Under Drawal(-) (MU/DAY)
NR	Chandigarh	163	195	31.7	19.5	5.4	6.5	1.1
	Delhi	2410	2376	-34.1	-1.4	80.3	79.2	-1.1
	Haryana	3000	2981	-18.8	-0.6	100.0	99.4	-0.6
	H.P.	32	61	29.0	90.8	1.1	2.0	1.0
	J&K	504	519	15.5	3.1	16.8	17.3	0.5
	Punjab	3337	3357	19.6	0.6	111.2	111.9	0.7
	Rajasthan	1703	1698	-5.0	-0.3	56.8	56.6	-0.2
	U.P.	3819	3778	-40.9	-1.1	127.3	125.9	-1.4
	Uttarakhand	569	577	8.2	1.4	19.0	19.2	0.3
NFF/Railway	48	66	18.2	37.7	1.6	2.2	0.6	
WR	Gujarat	1330	1264	-66.1	-5.0	44.3	42.1	-2.2
	Madhya Pradesh	2317	2300	-16.9	-0.7	77.2	76.7	-0.6
	Maharashtra	3517	3601	83.7	2.4	117.2	120.0	2.8
	Chhattisgarh	497	485	-12.1	-2.4	16.6	16.2	-0.4
	Goa	228	250	22.0	9.7	7.6	8.3	0.7
	D&D	181	181	0.6	0.3	6.0	6.0	0.0
	D&NH	442	425	-16.7	-3.8	14.7	14.2	-0.6
	ESIL	284	279	-4.8	-1.7	9.5	9.3	-0.2
SR	AP TRANSCO	707	652	-55.0	-7.8	23.6	21.7	-1.8
	TG TRANSCO	1949	2116	167.3	8.6	65.0	70.5	5.6
	KPTCL	696	713	16.7	2.4	23.2	23.8	0.6
	KSEB	1007	1070	62.5	6.2	33.6	35.7	2.1
	TNEB	2415	2410	-4.9	-0.2	80.5	80.3	-0.2
	PONDICHERRY	206	206	-0.4	-0.2	6.9	6.9	0.0
	Goa(SR)	54	52	-1.5	-2.8	1.8	1.7	-0.1
ER	Bihar	1289	1285	-4.5	-0.3	43.0	42.8	-0.1
	JSEB	314	291	-22.7	-7.2	10.5	9.7	-0.8
	DVC	-537	-528	8.9	-1.7	-17.9	-17.6	0.3
	GRIDCO	518	567	49.0	9.5	17.3	18.9	1.6
	WBSEB	1025	1107	82.3	8.0	34.2	36.9	2.7
	Sikkim	33	30	-3.1	-9.2	1.1	1.0	-0.1
NER	Arunachal Pradesh	47	57	9.3	19.8	1.6	1.9	0.3
	Assam	439	469	30.1	6.9	14.6	15.6	1.0
	Manipur	54	51	-3.5	-6.5	1.8	1.7	-0.1
	MeSEB	39	34	-4.6	-12.0	1.3	1.1	-0.2
	Mizoram	32	34	1.7	5.4	1.1	1.1	0.1
	Nagaland	49	54	5.2	10.7	1.6	1.8	0.2
	Tripura	30	36	6.2	20.9	1.0	1.2	0.2

12. INTER REGIONAL EXCHANGES 2014-15

	April'14	May'14	June'14	Fin. Year 2014-15 Till June 2014
Name of Line				
Import of NR from WR (WR-NR)				
WR - NR 765 kV Gwalior - Agra D/C	1131.41	1094.02	1169.37	3394.80
WR - NR HVDC Vindhyachal	226.93	146.02	220.87	593.82
WR - NR 400 kV Zerda Kankroli	0.00	0.00	0.00	0.00
WR - NR 400 kV Zerda Bhinmal	0.00	0.00	0.11	0.11
WR - NR 220 kV Badod - Kota/ Modak	0.00	0.00	5.46	5.46
WR - NR 220 kV Auraiya - Malanpur/Mehgaon	0.00	0.00	2.26	2.26
WR - NR HVDC Mundra - Mohindergarh	1435.93	1407.11	1420.90	4263.94
Total WR - NR	2794.27	2647.15	2818.96	8260.38
Import of NR from ER (ER-NR)				
ER - NR 765 kV Sasaram - Fatehpur	15.63	29.42	61.54	106.58
ER - WR 765 kV Gaya - Fatehpur	0.00	5.45	7.52	12.97
ER - WR 400 kV Pusauli - Balia	1.80	0.00	2.18	3.98
ER-NR 400 kV Patna - Balia 2xD/C	199.41	188.18	196.33	583.91
ER - NR 400 kV Muzaffarpur - Gorakhpur D/C	60.87	153.36	338.00	552.22
ER - NR 400 kV Biharshariff - Balia D/C	73.20	134.72	234.73	442.65
ER - NR HVDC Sasaram (Byepass)	214.12	275.04	232.52	721.68
ER - NR 220 kV Pusauli - Sahupuri	112.59	109.26	117.30	339.14
ER - NR 132 kV Sahupuri - Karamnasa	0.00	0.00	0.00	0.00
ER - NR 132 kV Rihand - Son Nagar	0.00	0.00	0.00	0.00
Total NR - WR	677.62	895.41	1190.11	2763.13
Export of NR to WR (NR-WR)				
NR - WR 765 kV Gwalior - Agra D/C	0.00	0.00	0.00	0.00
NR - WR HVDC Vindhyachal	7.75	36.56	10.16	54.47
NR - WR 400 kV Zerda Kankroli	180.30	135.80	123.34	439.44
NR - WR 400 kV Zerda Bhinmal	133.65	98.67	104.05	336.37
NR - WR 220 kV Badod - Kota/ Modak	88.03	68.11	90.43	246.58
NR - WR 220 kV Auraiya - Malanpur/Mehgaon	26.51	28.54	26.76	81.81
NR - WR HVDC Mundra - Mohindergarh	0.00	0.00	0.00	0.00
Total NR - WR	436.24	367.68	354.74	1158.66
Export of NR to ER (NR-ER)				
NR - ER 765 kV Sasaram - Fatehpur	39.73	10.26	1.31	51.30
NR - ER 765 kV Gaya - Fatehpur	50.11	22.91	1.64	74.66
NR - ER 400 kV Pusauli - Balia	66.02	53.18	20.67	139.87
NR - ER 400 kV Patna - Balia 2xD/C	0.00	0.00	0.65	0.65
NR - ER 400 kV Muzaffarpur - Gorakhpur D/C	5.12	1.26	0.00	6.38
NR - ER 400 kV Biharshariff - Balia D/C	2.38	0.00	0.00	2.38
NR - ER HVDC Sasaram (Byepass)	25.06	0.70	1.72	27.49
NR - ER 220 kV Pusauli - Sahupuri	0.00	0.03	0.00	0.03
NR - ER 132 kV Sahupuri - Karamnasa	0.00	0.94	0.00	0.94
NR - ER 132 kV Rihand - Son Nagar	12.54	7.36	3.28	23.18
Total NR - ER	200.97	96.65	29.27	326.88

12. INTER REGIONAL EXCHANGES 2014-15

	April'14	May'14	June'14	Fin. Year 2014-15 Till June 2014
Name of Line				
Export of WR to ER (WR-ER)				
WR - ER 765 kV Ranchi - Dharamjaygarh	4.29	72.09	2.90	79.28
WR - ER 400 kV Sipat - Ranchi D/C	5.57	97.73	44.48	147.77
WR - ER 400 kV Raigarh - Sterlite D/C	0.00	0.00	0.37	0.37
WR - ER 400 kV Raigarh - Jharsuguda D/C	2.20	78.59	45.11	125.90
WR - ER 220 kV Korba - Budhipadar D/C	0.19	10.23	8.18	18.60
WR - ER 220 kV Raigarh - Budhipadar	0.00	0.49	0.08	0.57
Total WR - ER	7.95	259.13	141.09	408.18
Import of WR from ER (ER - WR)				
ER - WR 765 kV Ranchi - Dharamjaygarh	0.00	0.73	5.28	6.02
ER - WR 400 kV Sipat - Ranchi D/C	2.42	0.00	2.53	4.95
ER - WR 400 kV Raigarh - Sterlite D/C	115.86	115.02	172.47	403.35
ER - WR 400 kV Raigarh - Jharsuguda D/C	0.00	0.00	13.84	13.84
ER - WR 220 kV Korba - Budhipadar D/C	4.66	9.39	12.19	26.24
ER - WR 220 kV Raigarh - Budhipadar	70.98	63.40	64.54	198.92
Total ER - WR	193.92	188.55	270.86	653.33
Export of ER to NER				
ER - NER 400 kV Binaguri - Bongaigaon D/C	231.89	201.50	128.44	561.83
ER - NER 220 kV Birpara - Salakati D/C	41.64	59.03	63.64	164.31
Total ER - NER	273.52	260.53	192.08	726.13
Import of ER from NER (NER - ER)				
NER - ER 400 kV Binaguri - Bongaigaon D/C	0.00	0.00	6.92	6.92
NER - ER 220 kV Birpara - Salakati D/C	0.00	0.00	0.00	0.00
Total NER - ER	0.00	0.00	6.92	6.92
Export of ER to SR (ER - SR)	0.00			0.00
ER - SR HVDC Gazuwaka	534.56	526.50	394.52	1455.59
ER - SR HVDC Talchar - Kolar	1419.85	1299.16	1345.00	4064.01
ER - SR 220 kV Balimela - Upper Sileru*	0.38	0.00		0.38
Total ER - SR	1954.41	1825.70	1739.53	5519.64
Import of ER from SR (SR - ER)				
SR - ER HVDC Gazuwaka	0.00	0.00	0.00	0.00
SR - ER HVDC Talchar - Kolar	0.00	0.00	0.00	0.00
Total SR - ER	0.00	0.00	0.00	0.00
Export of WR to SR (WR-SR)				
WR - SR HVDC Bhadravati	691.96	692.54	675.04	2059.54
WR - SR 765 kV Sholapur - Raichur	78.84	68.83	79.31	226.98
Total WR - SR	770.80	761.36	754.35	2286.51
Import of WR from SR (SR - WR)				
SR - WR HVDC Bhadravati	0.00	0.00	0.00	0.00
SR - WR 765 kV Raichur - Sholapur	35.99	47.17	50.50	133.65
Total SR - WR	35.99	47.17	50.50	133.65
TOTAL ALL INDIA	7346	7349	7548	22243

12.1 Import of NR from WR & ER during June 2014

Date	Import of NR from WR (WR-NR)								Import of NR from ER (ER-NR)										Total NR -WR
	WR - NR 765 kV Gwalior - Agra D/C	WR - NR HVDC V'chal	WR - NR 400 kV Zerda- Kankroli	WR - NR 400 kV Zerda- Bhinmal	WR - NR 220 kV Badod - Kota / Modak	WR - NR 220 kV Auraiya - Malanpur / Mehgaon	WR - NR HVDC Mundra - M'garh	Total WR - NR	ER - NR 765 kV Sasaram - Fatehpur	ER - WR 765 kV Gaya - Fatehpur	ER - WR 400 kV Pusauli - Balua	ER-NR 400 kV Patna - Balua 2xD/C	ER - NR 400 kV Muzaffarpur - G'pur D/C	ER - NR 400 kV B'shariff - Balua D/C	ER - NR HVDC Sasaram (Byepass)	ER - NR 220 kV Pusauli - Sahupuri	ER - NR 132 kV Sahupuri - K'nasa	ER - NR 132 kV Rihand - Son Nagar	
	1-Jun-14	44.77	7.05	0.00	0.00	0.27	0.00	41.30	93.39	0.00	3.76	0.00	9.99	11.54	7.59	9.77	4.35	0.00	
2-Jun-14	34.60	3.24	0.00	0.00	0.00	0.00	48.36	86.20	1.73	0.00	0.00	8.33	9.63	7.87	9.69	4.09	0.00	0.00	41.34
3-Jun-14	40.22	12.92	0.00	0.00	0.00	0.00	49.36	102.50	1.69	0.00	0.00	7.71	8.49	7.06	9.76	4.30	0.00	0.00	39.01
4-Jun-14	34.33	9.79	0.00	0.00	0.00	0.00	48.35	92.47	1.68	0.00	0.00	7.57	7.50	6.67	9.60	3.95	0.00	0.00	36.97
5-Jun-14	38.81	6.08	0.00	0.00	0.00	0.00	48.35	93.24	3.24	0.00	0.00	9.28	9.91	8.36	9.72	3.90	0.00	0.00	44.41
6-Jun-14	38.70	7.16	0.00	0.00	0.00	0.00	48.35	94.21	3.08	0.00	0.00	8.27	10.55	6.95	9.71	4.07	0.00	0.00	42.62
7-Jun-14	44.77	7.05	0.00	0.00	0.27	0.00	41.30	93.39	0.00	3.76	0.00	9.99	11.54	7.59	9.77	4.35	0.00	0.00	46.98
8-Jun-14	39.26	10.75	0.00	0.11	4.91	0.00	30.29	85.32	3.34	0.00	0.00	4.84	10.85	8.95	9.53	4.19	0.00	0.00	41.70
9-Jun-14	33.96	6.48	0.00	0.00	0.00	0.00	33.58	74.02	3.19	0.00	0.00	2.65	10.58	9.41	9.64	3.84	0.00	0.00	39.32
10-Jun-14	35.81	7.29	0.00	0.00	0.00	0.00	48.19	91.30	3.23	0.00	0.00	2.60	11.90	9.21	9.90	4.21	0.00	0.00	41.06
11-Jun-14	33.11	4.83	0.00	0.00	0.00	0.00	48.35	86.30	0.89	0.00	0.00	2.33	10.41	8.94	9.67	0.00	0.00	0.00	32.23
12-Jun-14	31.45	3.30	0.00	0.00	0.00	0.27	45.86	80.88	0.00	0.00	0.00	0.00	6.05	4.41	7.71	4.03	0.00	0.00	22.19
13-Jun-14	34.77	2.70	0.00	0.00	0.00	0.22	45.59	83.28	2.53	0.00	1.08	0.23	7.09	5.39	0.00	4.04	0.00	0.00	20.36
14-Jun-14	36.21	7.84	0.00	0.00	0.00	0.00	48.13	92.18	3.06	0.00	0.52	0.00	7.51	6.18	0.87	4.13	0.00	0.00	22.27
15-Jun-14	35.98	7.76	0.00	0.00	0.00	0.00	47.33	91.07	3.13	0.00	0.00	0.69	8.74	6.81	2.43	4.10	0.00	0.00	25.89
16-Jun-14	46.31	12.01	0.00	0.00	0.00	0.00	49.99	108.31	2.94	0.00	0.29	5.29	12.00	11.17	4.13	4.24	0.00	0.00	40.05
17-Jun-14	48.45	12.01	0.00	0.00	0.00	0.18	48.95	109.59	1.22	0.00	0.20	7.15	10.75	11.61	6.55	3.83	0.00	0.00	41.31
18-Jun-14	43.01	12.00	0.00	0.00	0.00	0.00	53.08	108.09	1.80	0.00	0.00	9.37	10.34	11.04	9.71	3.88	0.00	0.00	46.15
19-Jun-14	46.27	12.00	0.00	0.00	0.00	0.36	51.53	110.16	2.10	0.00	0.00	10.57	10.61	11.02	9.71	4.07	0.00	0.00	48.07
20-Jun-14	39.21	10.15	0.00	0.00	0.00	1.23	51.22	101.81	4.32	0.00	0.00	12.55	13.68	10.95	7.30	3.92	0.00	0.00	52.72
21-Jun-14	35.76	6.65	0.00	0.00	0.00	0.00	46.40	88.81	3.24	0.00	0.09	10.98	14.06	9.62	4.83	3.74	0.00	0.00	46.56
22-Jun-14	36.79	6.63	0.00	0.00	0.00	0.00	45.13	88.55	4.32	0.00	0.00	10.00	15.51	7.79	5.75	3.43	0.00	0.00	46.80
23-Jun-14	40.75	6.75	0.00	0.00	0.00	0.00	52.66	100.16	0.27	0.00	0.00	10.95	16.96	8.61	7.19	3.99	0.00	0.00	47.96
24-Jun-14	41.69	6.68	0.00	0.00	0.00	0.00	47.08	95.44	3.52	0.00	0.00	9.48	13.22	6.39	7.29	4.10	0.00	0.00	44.00
25-Jun-14	44.31	9.32	0.00	0.00	0.00	0.00	52.29	105.91	2.87	0.00	0.00	6.41	10.91	5.69	7.21	4.44	0.00	0.00	37.53
26-Jun-14	38.54	3.26	0.00	0.00	0.00	0.00	49.54	91.34	4.15	0.00	0.00	7.35	12.02	6.82	7.58	4.14	0.00	0.00	42.06
27-Jun-14	41.05	5.69	0.00	0.00	0.00	0.00	49.06	95.79	0.00	0.00	0.00	7.92	15.03	7.36	9.67	4.09	0.00	0.00	44.06
28-Jun-14	42.24	4.95	0.00	0.00	0.00	0.00	49.06	96.24	0.00	0.00	0.00	5.33	15.07	6.05	8.47	4.10	0.00	0.00	39.02
29-Jun-14	34.95	2.91	0.00	0.00	0.00	0.00	50.74	88.60	0.00	0.00	0.00	2.85	11.73	3.59	9.68	3.75	0.00	0.00	31.60
30-Jun-14	33.29	5.64	0.00	0.00	0.00	0.00	51.48	90.41	0.00	0.00	0.00	5.66	13.81	5.65	9.71	4.06	0.00	0.00	38.89
Total Jun'14	1169.37	220.87	0.00	0.11	5.46	2.26	1420.90	2818.96	61.54	7.52	2.18	196.33	338.00	234.73	232.52	117.30	0.00	0.00	1190.11

Date	12.2 Export of NR to WR & ER during June 2014																		
	Export of NR to WR (NR- WR)								Export of NR to ER (NR- ER)										
	WR - NR 765 kV Gwalior - Agra D/C	WR - NR HVDC V'chal	WR - NR 400 kV Zerda- Kankroli	WR - NR 400 kV Zerda- Bhinmal	WR - NR 220 kV Badod - Kota / Modak	WR - NR 220 kV Auraiya - Malanpur / Mehgaon	WR - NR HVDC Mundra - M'garh	Total WR - NR	ER - NR 765 kV Sasaram - Fatehpur	ER - WR 765 kV Gaya - Fatehpur	ER - WR 400 kV Pusauli - Balua	ER-NR 400 kV Patna - Balua 2xD/C	ER - NR 400 kV Muzaffarpur - G'pur D/C	ER - NR 400 kV B'shariff - Balua D/C	ER - NR HVDC Sasaram (Byepass)	ER - NR 220 kV Pusauli - Sahupuri	ER - NR 132 kV Sahupuri - K'nasa	ER - NR 132 kV Rihand - Son Nagar	Total NR -WR
1-Jun-14	0.00	0.05	1.34	0.19	0.00	0.71	0.00	2.30	0.00	0.00	1.39	0.00	0.00	0.00	0.00	0.00	0.00	0.00	1.39
2-Jun-14	0.00	0.00	4.67	3.19	2.65	0.98	0.00	11.48	0.00	0.00	0.86	0.00	0.00	0.00	0.00	0.00	0.00	0.65	1.51
3-Jun-14	0.00	0.00	2.79	2.09	1.26	0.70	0.00	6.85	0.00	0.00	0.94	0.00	0.00	0.00	0.00	0.00	0.00	0.64	1.58
4-Jun-14	0.00	0.00	3.39	2.31	1.85	1.05	0.00	8.60	0.00	0.00	1.06	0.00	0.00	0.00	0.00	0.00	0.00	0.00	1.06
5-Jun-14	0.00	0.37	1.93	0.65	0.92	0.84	0.00	4.70	0.00	0.00	0.87	0.00	0.00	0.00	0.00	0.00	0.00	0.00	0.87
6-Jun-14	0.00	0.47	2.15	1.15	0.78	0.86	0.00	5.41	0.00	0.00	1.25	0.00	0.00	0.00	0.00	0.00	0.00	0.00	1.25
7-Jun-14	0.00	0.05	1.34	0.19	0.00	0.71	0.00	2.30	0.00	0.00	1.39	0.00	0.00	0.00	0.00	0.00	0.00	0.00	1.39
8-Jun-14	0.00	0.00	1.31	0.00	0.00	2.07	0.00	3.38	0.00	0.00	0.88	0.00	0.00	0.00	0.00	0.00	0.00	0.66	1.54
9-Jun-14	0.00	0.00	2.70	1.63	0.58	1.33	0.00	6.24	0.00	0.00	0.75	0.00	0.00	0.00	0.00	0.00	0.00	0.00	0.75
10-Jun-14	0.00	0.00	3.22	2.81	0.12	1.21	0.00	7.36	0.00	0.00	0.80	0.00	0.00	0.00	0.00	0.00	0.00	0.00	0.80
11-Jun-14	0.00	0.00	3.67	3.17	0.82	0.90	0.00	8.56	0.00	0.00	0.47	0.00	0.00	0.00	0.00	0.00	0.00	0.00	0.47
12-Jun-14	0.00	2.36	4.47	3.94	22.57	0.00	0.00	33.33	1.31	0.00	0.74	0.53	0.00	0.00	1.72	0.00	0.00	0.00	4.31
13-Jun-14	0.00	1.71	4.62	4.39	20.03	0.00	0.00	30.74	0.00	0.00	0.00	0.00	0.00	0.00	0.00	0.00	0.00	0.00	0.00
14-Jun-14	0.00	0.00	4.67	4.35	1.89	0.55	0.00	11.46	0.00	0.00	0.00	0.12	0.00	0.00	0.00	0.00	0.00	0.00	0.12
15-Jun-14	0.00	0.00	3.73	3.36	1.41	0.69	0.00	9.19	0.00	0.00	0.62	0.00	0.00	0.00	0.00	0.00	0.00	0.00	0.62
16-Jun-14	0.00	0.00	3.47	2.86	0.90	0.06	0.00	7.29	0.00	0.00	0.00	0.00	0.00	0.00	0.00	0.00	0.00	0.00	0.00
17-Jun-14	0.00	0.00	3.01	2.82	0.85	0.00	0.00	6.69	0.00	0.00	0.00	0.00	0.00	0.00	0.00	0.00	0.00	0.00	0.00
18-Jun-14	0.00	0.00	4.79	4.63	1.48	0.67	0.00	11.57	0.00	1.64	0.03	0.00	0.00	0.00	0.00	0.00	0.00	0.00	1.66
19-Jun-14	0.00	0.00	3.23	2.57	10.06	0.00	0.00	15.86	0.00	0.00	0.18	0.00	0.00	0.00	0.00	0.00	0.00	0.45	0.64
20-Jun-14	0.00	0.00	6.35	5.95	1.70	0.00	0.00	14.00	0.00	0.00	0.07	0.00	0.00	0.00	0.00	0.00	0.00	0.00	0.07
21-Jun-14	0.00	0.00	8.14	8.10	2.76	2.08	0.00	21.08	0.00	0.00	0.00	0.00	0.00	0.00	0.00	0.00	0.00	0.00	0.00
22-Jun-14	0.00	0.00	3.49	4.60	1.68	2.36	0.00	12.13	0.00	0.00	0.18	0.00	0.00	0.00	0.00	0.00	0.00	0.00	0.18
23-Jun-14	0.00	0.90	4.92	4.63	2.38	1.77	0.00	14.60	0.00	0.00	0.03	0.00	0.00	0.00	0.00	0.00	0.00	0.00	0.03
24-Jun-14	0.00	0.40	6.95	6.73	3.19	1.67	0.00	18.95	0.00	0.00	0.99	0.00	0.00	0.00	0.00	0.00	0.00	0.00	0.99
25-Jun-14	0.00	0.00	7.45	7.31	3.24	0.62	0.00	18.62	0.00	0.00	1.16	0.00	0.00	0.00	0.00	0.00	0.00	0.88	2.04
26-Jun-14	0.00	2.06	6.00	5.72	1.38	0.87	0.00	16.03	0.00	0.00	1.19	0.00	0.00	0.00	0.00	0.00	0.00	0.00	1.19
27-Jun-14	0.00	0.00	4.54	4.26	0.22	0.74	0.00	9.76	0.00	0.00	1.38	0.00	0.00	0.00	0.00	0.00	0.00	0.00	1.38
28-Jun-14	0.00	0.21	3.79	3.82	1.22	0.89	0.00	9.93	0.00	0.00	0.81	0.00	0.00	0.00	0.00	0.00	0.00	0.00	0.81
29-Jun-14	0.00	1.59	5.07	5.15	2.10	0.95	0.00	14.86	0.00	0.00	1.63	0.00	0.00	0.00	0.00	0.00	0.00	0.00	1.63
30-Jun-14	0.00	0.00	6.12	1.49	2.38	1.49	0.00	11.49	0.00	0.00	1.01	0.00	0.00	0.00	0.00	0.00	0.00	0.00	1.01
Total Jun'14	0.00	10.16	123.34	104.05	90.43	26.76	0.00	354.74	1.31	1.64	20.67	0.65	0.00	0.00	1.72	0.00	0.00	3.28	29.27

12.3 Import - Export of ER with WR & NER during June'2014

Date	Export of WR to ER (WR-ER)							Import of WR from ER (ER - WR)							Export of ER to NER (ER - NER)			Import of ER from NER (NER - ER)		
	WR - ER 765 kV Dharamjaygarh - Ranchi D/C	WR - ER 400 kV Sipat - Ranchi D/C	WR - ER 400 kV Raigarh - Sterlite D/C	WR - ER 400 kV Raigarh - Jharsuguda D/C	WR - ER 220 kV Korba - Budhipadar D/C	WR - ER 220 kV Raigarh - Budhipadar	Total WR - ER	WR - ER 765 kV Dharamjaygarh - Ranchi D/C	ER - WR 400 kV Sipat - Ranchi D/C	ER - WR 400 kV Raigarh - Sterlite D/C	ER - WR 400 kV Raigarh - Jharsuguda D/C	ER - WR 220 kV Korba - Budhipadar D/C	ER - WR 220 kV Raigarh - Budhipadar	Total ER - WR	ER - NER 400 kV Binaguri - Bongaigaon D/C	ER - NER 220 kV Birpara - Salakati D/C	Total ER - NER	NER - ER 400 kV Binaguri - Bongaigaon D/C	NER - ER 220 kV Birpara - Salakati D/C	Total NER - ER
1-Jun-14	1.56	2.32	0.00	1.22	0.00	0.00	5.10	0.00	0.00	6.53	0.00	0.73	2.59	9.84	6.99	2.94	9.93	0.00	0.00	0.00
2-Jun-14	2.21	3.53	0.00	1.14	0.00	0.00	6.88	0.00	0.00	9.38	0.00	0.65	2.68	12.72	5.43	2.39	7.82	0.00	0.00	0.00
3-Jun-14	4.05	3.70	0.00	2.40	0.00	0.00	10.15	0.00	0.00	8.18	0.00	0.50	2.57	11.26	6.46	2.63	9.09	0.00	0.00	0.00
4-Jun-14	2.26	2.21	0.00	1.09	0.00	0.00	5.56	0.00	0.00	10.70	0.00	0.66	2.46	13.82	6.96	2.56	9.53	0.00	0.00	0.00
5-Jun-14	0.06	0.07	0.00	0.00	0.00	0.00	0.13	0.00	0.00	13.00	1.04	1.51	2.40	17.95	7.25	2.40	9.65	0.00	0.00	0.00
6-Jun-14	0.24	0.43	0.00	0.16	0.02	0.00	0.85	0.00	0.00	10.89	0.00	0.62	2.35	13.86	7.79	0.63	8.43	0.00	0.00	0.00
7-Jun-14	0.00	0.39	0.00	0.00	0.42	0.00	0.82	0.24	0.00	11.37	1.17	0.29	1.46	14.53	5.36	2.10	7.46	0.00	0.00	0.00
8-Jun-14	0.00	0.00	0.00	0.00	0.70	0.08	0.78	0.70	0.51	8.20	2.80	0.56	0.99	13.76	4.99	2.19	7.18	0.00	0.00	0.00
9-Jun-14	0.00	0.00	0.00	0.00	0.63	0.00	0.63	2.29	1.33	1.45	5.69	0.00	1.44	12.20	4.48	2.06	6.54	0.00	0.00	0.00
10-Jun-14	0.18	0.04	0.00	0.31	0.07	0.00	0.60	0.00	0.00	6.09	0.00	0.00	1.39	7.48	2.74	1.53	4.28	0.00	0.00	0.00
11-Jun-14	1.79	1.21	0.00	1.77	0.00	0.00	4.77	0.00	0.00	6.89	0.00	0.40	1.95	9.24	3.46	1.75	5.21	0.00	0.00	0.00
12-Jun-14	3.18	2.91	0.00	3.65	0.33	0.00	10.07	0.00	0.00	4.35	0.00	0.00	1.83	6.18	5.33	1.95	7.28	0.00	0.00	0.00
13-Jun-14	4.03	3.44	0.00	2.86	0.00	0.00	10.33	0.00	0.00	4.93	0.00	0.30	1.60	6.83	5.85	2.18	8.03	0.00	0.00	0.00
14-Jun-14	1.99	1.93	0.00	0.98	0.05	0.00	4.94	0.00	0.00	5.48	0.00	0.32	2.65	8.44	6.63	2.39	9.02	0.00	0.00	0.00
15-Jun-14	2.20	1.96	0.00	2.23	0.10	0.00	6.49	0.00	0.00	4.55	0.00	0.31	2.59	7.46	7.88	2.45	10.32	0.00	0.00	0.00
16-Jun-14	0.99	1.35	0.00	0.68	0.21	0.00	3.22	0.00	0.00	5.26	0.00	0.00	2.59	7.85	6.69	2.45	9.13	0.00	0.00	0.00
17-Jun-14	2.29	2.26	0.00	2.76	0.80	0.00	8.10	0.00	0.00	4.27	0.00	0.00	1.95	6.22	7.40	2.66	10.06	0.00	0.00	0.00
18-Jun-14	2.32	2.22	0.00	2.78	0.55	0.00	7.86	0.00	0.00	4.62	0.00	0.00	2.19	6.81	7.24	2.60	9.84	0.00	0.00	0.00
19-Jun-14	2.76	2.44	0.00	3.08	0.97	0.00	9.24	0.00	0.00	4.03	0.00	0.00	1.66	5.69	5.88	2.35	8.23	0.00	0.00	0.00
20-Jun-14	0.62	0.51	0.00	1.35	0.70	0.00	3.19	0.00	0.00	4.51	0.00	0.02	1.42	5.94	2.46	2.00	4.46	0.00	0.00	0.00
21-Jun-14	0.81	0.89	0.00	2.26	0.73	0.00	4.68	0.00	0.00	4.52	0.00	0.09	2.03	6.64	0.88	1.94	2.82	0.00	0.00	0.00
22-Jun-14	0.00	0.00	0.00	2.13	0.40	0.00	2.53	0.29	0.26	3.25	0.00	0.09	2.14	6.03	0.00	1.12	1.12	2.01	0.00	2.01
23-Jun-14	1.24	0.87	0.00	2.99	0.47	0.00	5.56	0.00	0.00	3.04	0.00	0.03	2.04	5.11	0.00	0.78	0.78	3.40	0.00	3.40
24-Jun-14	2.89	2.65	0.00	4.36	0.81	0.00	10.72	0.00	0.00	3.58	0.00	0.00	1.86	5.44	0.00	1.39	1.39	1.25	0.00	1.25
25-Jun-14	1.14	2.47	0.00	2.58	0.09	0.00	6.28	0.00	0.00	4.40	0.00	0.00	2.29	6.69	3.78	2.94	6.72	0.00	0.00	0.00
26-Jun-14	0.25	0.82	0.00	0.00	0.00	0.00	1.07	0.00	0.00	5.98	0.12	0.94	1.99	9.04	5.09	3.01	8.10	0.00	0.00	0.00
27-Jun-14	0.00	0.68	0.00	0.00	0.00	0.00	0.68	0.34	0.00	5.67	0.79	1.45	2.75	10.99	0.58	1.85	2.42	0.00	0.00	0.00
28-Jun-14	0.91	1.60	0.37	0.57	0.08	0.00	3.53	0.00	0.00	0.00	0.00	1.08	2.77	3.85	0.00	1.85	1.85	0.26	0.00	0.26
29-Jun-14	2.90	1.60	0.00	1.79	0.05	0.00	6.33	0.00	0.00	1.09	0.00	0.58	2.89	4.56	0.12	2.18	2.30	0.00	0.00	0.00
30-Jun-14	0.00	0.00	0.00	0.00	0.01	0.00	0.01	1.42	0.44	6.26	2.23	1.06	3.04	14.44	0.71	2.38	3.09	0.00	0.00	0.00
Total Jun'14	2.90	44.48	0.37	45.11	8.18	0.08	141.09	5.28	2.53	172.47	13.84	12.19	64.54	270.86	128.44	63.64	192.08	6.92	0.00	6.92

Date	12.4 Import and Export of SR with ER & WR during June 2014											
	Export of ER to SR (ER - SR)			Import of ER from SR (SR - ER)			Export of WR to SR (WR-SR)			Import of WR from SR (SR - WR)		
	ER - SR HVDC Gazuwaka	ER - SR HVDC Talchar - Kolar	Total ER - SR	SR - ER HVDC Gazuwaka	SR - ER HVDC Talchar - Kolar	Total SR - ER	WR - SR HVDC Bhadrawati	WR - SR 765 kV Sholapur - Raichur	Total WR - SR	SR - WR HVDC Bhadrawati	SR - WR 765 kV Raichur - Sholapur	Total SR - WR
1-Jun-14	18.74	45.23	63.97	0.00	0.00	0.00	22.17	2.33	24.50	0.00	2.30	2.30
2-Jun-14	18.27	44.63	62.90	0.00	0.00	0.00	20.56	1.66	22.22	0.00	3.40	3.40
3-Jun-14	9.94	40.88	50.82	0.00	0.00	0.00	18.52	0.57	19.09	0.00	4.38	4.38
4-Jun-14	15.32	38.38	53.70	0.00	0.00	0.00	21.98	1.86	23.84	0.00	2.81	2.81
5-Jun-14	12.16	33.67	45.83	0.00	0.00	0.00	22.60	1.30	23.90	0.00	3.36	3.36
6-Jun-14	12.98	38.31	51.29	0.00	0.00	0.00	22.16	1.56	23.72	0.00	2.51	2.51
7-Jun-14	9.87	46.02	55.89	0.00	0.00	0.00	23.05	1.65	24.70	0.00	1.74	1.74
8-Jun-14	9.91	38.58	48.48	0.00	0.00	0.00	22.65	1.91	24.56	0.00	1.88	1.88
9-Jun-14	12.35	40.73	53.08	0.00	0.00	0.00	21.28	2.53	23.81	0.00	2.34	2.34
10-Jun-14	16.25	44.49	60.73	0.00	0.00	0.00	21.37	2.17	23.54	0.00	2.07	2.07
11-Jun-14	16.12	36.29	52.41	0.00	0.00	0.00	21.14	2.23	23.37	0.00	2.17	2.17
12-Jun-14	14.55	43.54	58.09	0.00	0.00	0.00	23.05	2.75	25.80	0.00	2.15	2.15
13-Jun-14	15.66	45.03	60.70	0.00	0.00	0.00	22.55	2.09	24.64	0.00	1.88	1.88
14-Jun-14	16.80	46.56	63.36	0.00	0.00	0.00	21.36	2.53	23.89	0.00	1.35	1.35
15-Jun-14	15.99	48.85	64.84	0.00	0.00	0.00	23.07	2.92	25.99	0.00	1.14	1.14
16-Jun-14	9.33	46.57	55.90	0.00	0.00	0.00	23.15	3.59	26.74	0.00	0.59	0.59
17-Jun-14	17.61	46.90	64.52	0.00	0.00	0.00	21.82	3.33	25.15	0.00	0.95	0.95
18-Jun-14	12.62	47.01	59.63	0.00	0.00	0.00	22.24	1.99	24.23	0.00	1.62	1.62
19-Jun-14	11.65	48.70	60.34	0.00	0.00	0.00	23.61	2.76	26.37	0.00	1.27	1.27
20-Jun-14	11.22	47.05	58.27	0.00	0.00	0.00	21.67	2.29	23.96	0.00	1.63	1.63
21-Jun-14	12.03	49.83	61.86	0.00	0.00	0.00	23.62	3.93	27.55	0.00	0.56	0.56
22-Jun-14	12.24	49.52	61.76	0.00	0.00	0.00	23.59	4.22	27.81	0.00	0.45	0.45
23-Jun-14	12.18	50.23	62.40	0.00	0.00	0.00	23.64	3.79	27.42	0.00	0.61	0.61
24-Jun-14	12.25	50.10	62.35	0.00	0.00	0.00	23.52	3.88	27.40	0.00	1.38	1.38
25-Jun-14	12.25	47.55	59.80	0.00	0.00	0.00	23.22	2.18	25.40	0.00	0.06	0.06
26-Jun-14	12.01	46.97	58.98	0.00	0.00	0.00	23.39	2.96	26.36	0.00	1.61	1.61
27-Jun-14	11.14	44.16	55.30	0.00	0.00	0.00	23.55	2.88	26.43	0.00	0.95	0.95
28-Jun-14	11.10	42.64	53.73	0.00	0.00	0.00	23.71	2.45	26.16	0.00	1.81	1.81
29-Jun-14	11.00	48.00	58.99	0.00	0.00	0.00	23.70	3.54	27.24	0.00	0.83	0.83
30-Jun-14	11.00	48.61	59.60	0.00	0.00	0.00	23.08	5.46	28.54	0.00	0.71	0.71
Total June'14	394.52	1345.00	1739.53	0.00	0.00	0.00	675.04	79.31	754.35	0.00	50.50	50.50

**13. भूटान ,नेपाल एवं बांग्लादेश के साथ अंतरराष्ट्रीय विद्युत विनिमय
INTERNATIONAL EXCHANGE WITH BHUTAN, NEPAL AND BANGLADESH**

अप्रैल 2014 APRIL 2014 -जून 2014 JUNE 2014

अंतरराष्ट्रीय विद्युत विनिमय [भारत से दूसरे देश को आयात (+) / निर्यात (-)]
Transnational Exchange (Import=(+ve) /Export =(-ve))

माह MONTH	भूटान BHUTAN	नेपाल NEPAL	बांग्लादेश BANGLADESH
	Energy Exchange (In MU)	Energy Exchange (In MU)	Energy Exchange (In MU)
अप्रैल 2014 APR'14	78.02	-79.85	-276.56
मई 2014 MAY'14	271.28	-76.50	-273.69
जून 2014 JUN'14	586.46	-65.04	-282.55
कुल Total	935.76	-221.39	-832.80

**14. एसटीओए (द्विपक्षीय एवं सामूहिक) एवं डी एस एम बिलिंग का ब्योरा – माह जून 2014
STOA (BILATERAL AND COLLECTIVE) & DSM BILLING DETAILS- Jun' 2014**

द्विपक्षीय एसटीओए BILATERAL SHORT TERM OPEN ACCESS

	जून 2014	June'14	Apr'14- Jun'14	
क्षे.भा.प्रे.के. का नाम Name of RLDC	लेन – देनों की संख्या No. of Transactions	अनुमोदित ऊर्जा (मि.यु.) Energy Approved(MU)	लेन – देनों की संख्या No. of Transactions	अनुमोदित ऊर्जा (मि.यु.) Energy Approved (MU)
ऊ.क्षे. NR	484	2299	1072	4642
प.क्षे. WR	173	575	483	1718
द.क्षे. SR	212	1039	666	3157
पू.क्षे. ER	159	735	447	2577
पूर्वात्तर क्षे. NER	30	70	103	262
कुल TOTAL	1058	4719	2771	12356

एसटीओए SHORT TERM OPEN ACCESS

	सामूहिक एसटीओए STOA	Collective	द्विपक्षीय एसटीओए STOA	Bilateral
माह MONTH	क्रेताओं / विक्रेताओं की सं. NO. of Buyers/Sellers	अनुमोदित ऊर्जा (मि.यु.) Approved Energy (MU)	क्रेताओं / विक्रेताओं की सं. NO. of Buyers/Sellers	अनुमोदित ऊर्जा (मि.यु.) Approved Energy (MU)
अप्रैल 2014 APR'14	2015	2143	783	3765
मई 2014 MAY'14	1962	2383	930	3872
जून 2014 JUN'14	2123	2643	1058	4719
कुल TOTAL	6100	7169	2771	12356

**मासिक डी एस एम बिलिंग का ब्योरा 2014-15
MONTHLY DSM BILLING DETAILS 2014-15**

अंतिम आकड़े
provisional data subject to change

करोड़ रु. में (RS. IN CRORES)

क्षेत्र REGION	उत्तरी क्षेत्र NORTH	पश्चिमी क्षेत्र WEST	पूर्वी क्षेत्र EAST	दक्षिणी क्षेत्र SOUTH	पूर्वात्तर क्षेत्र NORTH EAST	अखिल भारतीय स्तर ALL INDIA
31 Mar- 27 Apr 2014	228	184	145	38	30	624
Up to 01 Jun 2014	490	358	245	80	61	1234
Up to 29 Jun 2014	747	521	367	194	88	1916

15. पावर मार्केट की सूचना (स्रोत : आई.ई.एक्स. एवं पी.एक्स.आई.एल.)
POWER MARKET INFORMATION (Source IEX & PXIL)
पावर एक्सचेंज के माध्यम से विनिमय – माह जून 2014
EXCHANGES THROUGH POWER EXCHANGES -JUNE'2014

क्र. स. S. No.	क्षेत्रीय ईकाई Regional Entity	क्षेत्र Region	पावर एक्सचेंज के माध्यम से (मि.यु. मे) Through Power Exchange in MU	
			विक्रय Sale	क्रय Purchase
1	पंजाब Punjab	उत्तरी क्षेत्र NR	0.00	256.20
2	हरियाणा Haryana		99.73	76.64
3	राजस्थान Rajasthan		39.49	346.12
4	दिल्ली Delhi		160.47	31.07
5	उत्तर प्रदेश Uttar Pradesh		0.00	186.62
6	उत्तराखंड Uttarakhand		5.01	107.92
7	हिमाचल प्रदेश Himachal Pradesh		362.83	0.00
8	जम्मू और कश्मीर J & K		33.45	23.16
9	केंद्र शासित चंडीगढ़ UT Chandigarh		0.00	4.37
10	ए डी हाइड्रो AD Hydro		73.79	0.00
11	करचम वांगतू KW		133.82	0.00
12	श्री सीमेंट Shree Cement		15.92	0.00
13	नाथपा झाकरी Nathpa Jhakri		25.59	0.00
14	बैरासूल Baira Siul HEP(BS0)		0.00	0.00
15	चमेरा -1 Chamera-I HEP(CM1)		0.00	0.00
16	चमेरा -2 Chamera-II HEP(CM2)		0.00	0.00
17	धौलीगंगा Dhauliganga HEP(DG0)		0.00	0.00
18	धौलीगंगा Dulahasti HEP(DU0)		0.00	0.00
19	सलाल Salal HEP(SL0)		0.00	0.00
20	सेवा -2 Sewa-II NHPC(SW2)		0.00	0.00
21	टनकपुर Tanakpur HEP(TP0)		0.00	0.00
22	उरी Uri HEP(UR0)		0.00	0.00
23	लांको बुधिल LANCO Budhil		46.46	0.00
24	चमेरा-3 chamera 3		0.00	0.00
25	अदानी एचवीडीसी ADANI HVDC(NORGU0)		0.00	0.00
26	मलाना MALANA	6.46	0.00	
27	उरी-II Uri-II HEP(UR2)	0.00	0.00	
28	मध्य प्रदेश MP	पश्चिमी क्षेत्र WR	107.30	45.98
29	महाराष्ट्र Maharashtra		48.81	273.45
30	गुजरात Gujarat		220.35	221.21
31	छत्तीसगढ़ Chattisgarh		167.99	4.76
32	गोवा Goa		0.00	0.00
33	दमन और दीव Daman and Diu		0.00	27.94
34	दादरा और नगर हवेली Dadra & Nagar Haveli		0.00	0.00
35	जिंदल JD		159.58	0.00
36	लांको अमरकंटक LANCO AMK		0.00	0.00
37	आर्यन कोल ACB India Limited		64.07	0.00
38	जिंदल स्टील एंड पावर Jindal Steel and Power Ltd		72.15	0.00
39	बालको -2 Balco-II		0.77	16.46
40	स्टरलाइट Sterlite(w3rse0)		105.98	0.00
41	एमको EMCO		26.46	0.00
42	वन्दना विद्युत VANDANA VIDYUT		13.01	0.00
43	एस्सार पावर ESSAR POWER		0.00	0.00
44	एस्सार स्टील ESSAR STEEL		0.00	228.51
45	के एस के महानदी KSK Mahanadi		0.00	0.00
46	जिंदल स्टेज -II Jindal Stg-II		15.31	0.00
47	कोरबा (प.) Korba(W) Comp. Ltd.		0.00	0.00
48	डी बी पावर D B Power		46.19	0.00

15. पावर मार्केट की सूचना (स्रोत : आई.ई.एक्स. एवं पी.एक्स.आई.एल.)
POWER MARKET INFORMATION (Source IEX & PXIL)
पावर एक्सचेंज के माध्यम से विनिमय – माह जून 2014
EXCHANGES THROUGH POWER EXCHANGES -JUNE'2014

क्र. स. S. No.	क्षेत्रीय ईकाई Regional Entity	क्षेत्र Region	पावर एक्सचेंज के माध्यम से (मि.यु. मे) Through Power Exchange in MU	
			विक्रय Sale	क्रय Purchase
49	आंध्र प्रदेश Andhra Pradesh	दक्षिणी क्षेत्र SR	1.80	245.67
50	कर्नाटक Karnataka		126.56	26.63
51	केरल Kerala		2.74	11.41
52	तमिलनाडु Tamilnadu		0.00	2.05
53	पॉण्डिचेरी Pondicherry		0.00	0.00
54	गोवा Goa		0.00	0.00
55	लांको कोंडापल्ली LANCO_KONDPLY		0.00	0.00
56	सिमापुरी SIMHAPURI		1.27	0.00
57	मीनाक्षी MINAXI		0.00	1.12
58	तेलंगाना TELANGANA		7.83	104.39
59	पश्चिम बंगाल West Bengal	पूर्वी क्षेत्र ER	38.82	126.63
60	उड़ीशा Odisha		102.71	78.90
61	बिहार Bihar		0.00	82.53
62	झारखंड Jharkhand		0.00	0.00
63	सिक्किम Sikkim		43.42	0.00
64	दामोदर घाटी परियोजना DVC		24.30	0.00
65	स्टरलाइट STERLITE		0.00	0.00
66	मैथन पावर लिमिटेड Maithon P. Ltd		18.43	0.00
67	आधुनिक पा. लिमिटेड Adhunik P.Ltd		1.69	0.00
68	चुजाचेन Chuzachen HEP		20.44	0.00
69	रंगित Rangit HEP		3.65	0.00
70	तीस्ता Teesta HEP		19.22	0.00
71	जीएमआर कमलंगा GMR Kamalanga		50.20	0.00
72	जिंदल आई पी टी एल JIPTL		50.05	0.00
73	अरुणाचल प्रदेश Arunachal Pradesh		पूर्वोत्तर क्षेत्र NER	1.24
74	असम Assam	2.25		95.77
75	मणिपुर Manipur	1.14		3.39
76	मेघालय Meghalaya	12.73		9.04
77	मिज़ोरम Mizoram	2.02		0.00
78	नागालैंड Nagaland	0.00		0.00
79	त्रिपुरा Tripura	31		0.04
80	अगरतला जीटीपीपी Agartala GTPP_AG0	0		0.00
81	कोपिली KOPILI_KP1	0		0.00
82	असम जीबीपीपी Assam GBPP_KT0	0		0.00
83	लोकटक LOKTAK	3		0.00
84	रंगानदी Ranganadi	0		0.00
85	दोयांग Doyang	0		0.00
86	पलाताना Palatana	26		0.00
कुल Total			2643	2643

16. RENEWABLE ENERGY CERTIFICATE MECHANISM

MONTH:-JUNE 2014

RE Source & Unit wise break up (June,14)

Sr.No	Source Wise	Accreditation		Registration	
		Capacity (MW)	Unit	Capacity (MW)	Unit
1	Wind	45	1	0	0
2	Urban or Municipal Waste	0	0	0	0
3	Solar Thermal	0	0	0	0
4	Solar PV	9.9	6	15.5	11
5	Small Hydro	0	0	31.5	2
6	Others	0	0	0	0
7	Geothermal	0	0	0	0
8	Biomass	27.8	1	9.9	1
9	Bio-fuel cogeneration	0	0	0	0
	Total	82.7	8	56.9	14

RECs Issued (June,14)

Sr.No.	Non Solar	Solar	Total
1	398552	27787	426339

Redemption of REC (June,14)

Sr.No.	Non Solar	Solar	Total
1	139454	1654	141108

16. RENEWABLE ENERGY CERTIFICATE MECHANISM

MONTH:-JUNE 2014

RE Source & Unit wise break up (Apr,14-Jun,14)

Sr.No	Source Wise	Accreditation		Registration	
		Capacity (MW)	Unit	Capacity (MW)	Unit
1	Wind	68.7	5	34.56	11
2	Urban or Municipal Waste	0	0	0	0
3	Solar Thermal	0	0	0	0
4	Solar PV	57.26	35	106.9	53
5	Small Hydro	41.98	4	85.48	8
6	Others	0	0	0	0
7	Geothermal	0	0	0	0
8	Biomass	27.8	1	32.5	4
9	Bio-fuel cogeneration	16.63	3	6.98	1
	Total	212.37	48	266.42	77

RECs Issued (Apr,14-Jun,14)

Sr.No.	Non Solar	Solar	Total
1	1951136	104296	2055432

Redemption of REC (Apr,14-Jun,14)

Sr.No.	Non Solar	Solar	Total
1	248063	4763	252826

16. RENEWABLE ENERGY CERTIFICATE MECHANISM

MONTH:-JUNE 2014

RE Source & Unit wise break up Since Inception to June,14

Sr.No	Source Wise	Accreditation		Registration	
		Capacity (MW)	Unit	Capacity (MW)	Unit
1	Wind	2410.43	616	2172.74	576
2	Urban or Municipal Waste	8	1	0	0
3	Solar Thermal	3	1	0	0
4	Solar PV	510.28	237	475.78	217
5	Small Hydro	342.49	37	288.49	31
6	Others	1.67	1	1.67	1
7	Geothermal	0	0	0	0
8	Biomass	721.16	75	673.96	71
9	Bio-fuel cogeneration	853.3	89	745.05	82
	Total	4850.32	1057	4357.68	978

RECs Issued since Inception to June,14

Sr.No.	Non Solar	Solar	Total
1	13740288	325327	14065615

Redemption of REC since Inception to June,14

Sr.No.	Non Solar	Solar	Total
1	6521576	85456	6607032

REC Closing balance as on 30.06.2014

Sr.No.	Non Solar	Solar	Total
1	7218712	239871	7458583

17.माह जून 2014 की मुख्य घटनाये / डिस्टर्बेन्सेज Important Events / Disturbances June 2014

A	B		C	D	E	F	G	H		I
S.NO.	Outage		Region	Name of tripping elements	Owner / Agency	Event	Generation/Load Loss	Revival		Category as per CEA Grid Standards
	Date	Time						Date	Time	
1	02.06.14	1554 hrs	SR	1). 230kV Kayathar-Tirunelveli 2).09 no. of feeders of 230kV 3).11 no. of feeders of 132kV 4).230/110kV Transformer-I,II,III at Kayathar 5) Wind Power generation in tamilnadu	TNEB	Failure of Y-phase jumper caused bus fault in 110 kv bus at 230/110 kv Kayathar Substaion.There was also failure of CT in 110kV Periyar Kaither Feeder at Kayathar which caused tripping of all elements given in column D.	Gen Loss=1135MW	02.06.14	1634hrs	GD-I
2	05.06.14	0103 hrs	NR	1).400 kv Azamgarh – Sultanpur 2).400 kv Azamgarh – Sarnath-I 3).400 kv Azamgarh – Mau 4).400kv Azamgarh-Gorakhpur 4).315 MVA 400/220kv ICT-I&II at Azamgarh	UPPTCL	Due to failure of R-Phase CT of Azamgarh-Gorakhpur Line, given elements in column D tripped	Load Loss=150MW	05.06.14	0300 hrs	GD-I
3	05.06.14	1910 hrs	SR	1).400kv NeyveliTS2-Pondy cherry line 2). 400kv NeyveliTS2-Trichy line 3). 400kv NeyveliTS2-TS1 EXP tie line 4). 400kv NeyveliTS2-Salem-1 5).400kv NeyveliTS2-TS2EXP tie line 6).765kv Raichur-Sholapur S/C 7). Unit 1,4,5 &7 at Neyveli 8).Unit-I at STCMS 9)920 MW of Tamilnadu wind generation	PG/STCMS	Due to heavy storm and rain, lighting cable of switchyard gantry tower broke and fell over 400kv bus-1 resulting into a bus fault on 400kv bus-1 at Neyveli TS2. This resulted in operation of bus bar protection of 400kv bus-1 which resulting in tripping of all elements given in column D.	Gen Loss=1800MW	05.06.14	2329 hrs	GD-I
4	05.06.14	2249 hrs	NR	1).220kv Bamnauli-Dial -II	DTL	Due to tripping of 220kv Bamnauli Dial on Phase to earth fault Load loss occurred in Delhi network.	Load Loss=400MW	05.06.14	1108 hrs	GD-I
5	05.06.14	2356 hrs	NR	1)400/220kv 315MVA ICT-1&2 2)400/220kv 500MVA ICT-1 3)220kv Agra-Gokul ckt	PG/UPPCL	At 400kv Agra UP S/S, R-phase C.T. of 220kv side of 400/220kv 315MVA ICT-I failed. At the same time 400/220kv 315MVA ICT-1 tripped on differential protection, 400/220kv ICT-2, 500MVA ICT-1 tripped in cascading on overcurrent protection.	Load Loss=1059 MW	06.06.14	0050 hrs	GD-I
6	07.06.14	0011 hrs	NR	1).400 kv Azamgarh – Sultanpur 2).400 kv Azamgarh – Sarnath-I 3).400 kv Azamgarh – Mau 4).400kv Azamgarh-Gorakhpur 4).315 MVA 400/220kv ICT-I&II at Azamgarh	UPPTCL	Due to failure of B-Phase CT of Azamgarh-Sultanpur Line at Azamgarh end, given elements in column D tripped	Load Loss=300MW	07.06.14	0147 hrs	GD-I
7	07.06.14	1540 hrs	NR	1). 200kv Mehrauli-Dial-D/C 2). 220kv Bamnauli-Dial-II 3). 220kv Bamnauli-Najafgarh-D/C	DTL	Due to B-Phase to Earth fault on 220kv Mehrauli-Dial Ckt,given element tripped.	Load loss=60MW	07.06.14	1600 hrs	GD-I
8	08.06.14	2003 hrs	ER	1).400kv Raigarh- Sterlite-II 2).400kv Sterlite-Rourkela-II 3). Unit#I &III at Sterlite	SEL	Due to Jumper Snapping of 400kv Sterlite-Rourkela-II, elements given in column D tripped.	Gen Loss=900MW(Approx)	08.06.14	2037 hrs	GD-I
9	09.06.14	2036 hrs	NR	1)400/220kv 315MVA ICT-1&2 2)400/220kv 500MVA ICT-1 3)220kv Agra-Sikandra ckt 4)220kv Agra-Hathras ckt	PG/UPPCL	At 400kv Agra UP S/S, B-phase C.T. of 220kv side of 400/220kv 315MVA ICT-2 failed. At the same time 400/220kv 315MVA ICT-2 tripped on differential protection, 400/220kv ICT-1, 400/220kv 500MVA ICT tripped in cascading on overcurrent protection.	Load loss=974 MW	09.06.14	2225 hrs	GD-I
10	11.06.14	1005 hrs	WR	1) 400kv Nagothane-Padghe-I & II 2) 400kv Nagothane-Dabhol-I & II 3) 400/220 kv ICT-I,II & III, Nagothane	MSEB	While awaiting outage of Bus-I at 400 kv Nagothane,elements given in column E tripped.	Load loss=145 MW	11.06.14	1205 hrs	GD-I

17.माह जून 2014 की मुख्य घटनाये / डिस्टर्बेन्सेज Important Events / Disturbances June 2014

A	B		C	D	E	F	G	H		I
S.NO.	Outage		Region	Name of tripping elements	Owner / Agency	Event	Generation/Load Loss	Revival		Category as per CEA Grid Standards
	Date	Time						Date	Time	
11	11.06.14	1441 hrs	NR	1)400/220kV 315MVA ICT-1&2 2)400/220kV 500MVA ICT	PG/UPPCL	At 400kV Agra UP S/S, flashover has observed in the B-phase bushing of 400kV side of 400/220kV 500MVA MVA ICT . At the same time 400/220kV 315MVA ICT-1 & 2, tripped in cascading on overcurrent protection.	Load loss=800 MW	11.06.14	1539 hrs	GD-I
12	12.06.14	1710 hrs	ER	1)220 kV Kalyaneswari-Maithon-I & II 2) 220 kV Kalyaneswari-Mejia-I,II 7 III 3)220 kV Kalyaneswari-Chandrapura-I & II 4)220 kV Kalyaneswari-Burnpur 5) 220/132 kV,150 MVA, ICT-I,II & III 6) 132 kv Maithon-Jamatra 7) CTPS Unit-8(250 MW)	DVC	Due to bursting of Y-Phase Bus Tie CT at DVC Kalyaneswari,elements given in column E tripped.	Load loss=300 MW Gen Loss=200 MW	12.06.14	1850 hrs	GD-I
13	16.06.14	1222 hrs	NR	1). 400kV Uri II(NHPC)-Uri(NHPC) 2). 400kV Uri(NHPC)-Wagoora(PG) D/C 3). All 4 units (120MW each) of Uri(NHPC)	PG	R-phase to ground fault occurred in 400kV Uri II(NHPC)-Uri(NHPC) ckt and LBB Protection operated at Uri-I due to which given elements in coulum D tripped.	Gen Loss=475MW	16.06.14	1737 hrs	GD-I
14	18.06.14	1136 hrs	ER	1). 400 kV Arambag-Bakreshwar line 2). 400 kV Arambag-Kolaghat line 3). 400kV Arambag-PPSP 1 and 2 lines 4). 400/220kV, 315 MVA, ICT-III & IV at Arambag	WBSETCL	Due to bus-2 fault at Arambag, the given lines and ICT's at Arambag got tripped	Load Loss=245MW	18.06.14	1240 hrs	GD-I
15	20.06.14	1237hrs	ER	1). 400 kV Meramundli-GMR-Kaniha Ckt 2). 400 kV Meramundli-Mendhasal 3). 400 kV Meramundli-JSPL-Ckt-II 4). 400 kV Meramundli-Angul-Kaniha-Ckt-II 5). 220 kV Bhanjagar- Meramundali Ckt-I	OPTCL	Due to snapping of B ph jumper from Wave trap to line isolator in 400 KV Meramundli-GMR line at Meramundali end, given elements in Coulum D tripped.	Load Loss=Nil	20.06.14	1351hrs	GI-II
16	24.06.14	0934 hrs	NR	1). 220kV Akal-Bhu 2). 220kV Amarsagar-Tejwa D/C 3). Wind generation at Bhu, Mada, Tejwa & Bhesada	Suzlon	220 kV Akal-Bhu line tripped due to Broken jumper near Bhu Sub-Station resulted into wind power generation loss nearby Bhu areaAt the same time wind generation connected at 220kV Tejwa, Mada & Dangri station also tripped.	Gen Loss=848MW	24.06.14	1735 hrs	GD-I
17	26.06.14	0906 hrs	SR	1). 10 no.of 220kV lines 2). All running units of Kadra,Kodasalli and Nagjheri	KPCL	Due to sudden reduction in wind generation connected at 110kV Soundatti station which resulted in increased power flow on 220kV Bidnal-Soundatti line. Due to increased power flow, over current protection of line got operated which resulted in tripping of 220kV Bidnal-Soundatti line. After tripping of this line, 220kV lines connected to Bidnal, Hubli, Harthi, Gadag, Nagjheri stations tripped due to cascading.	Gen Loss=700MW	26.06.14	1534 hrs	GD-I
18	26.06.14	1225 hrs	ER	1). 220kV Chukha-Birpara-D/C 2). Unit# 3&4(84 MW each) at Chukha HPS	PG/DGPC(Bhutan)	220 kv Chukha-Birpara I tripped on R-Y-B phase fault & 220 KV Chukha-Birpara-II tripped on R-Y phase fault. Consequently CHPC(U#3 & 4) tripped due to loss of evacuation path.	Gen Loss=120MW	26.06.14	1636 hrs	GD-I
19	26.06.14	1503 hrs	ER	1). 220kV Biharshariff-Fatuah D/C 2). 400/220kV 3X315MVA ICT at Biharshariff	BSPHCL/PG	While closing 220kV Tenughat-Biharsariff (BSEB) line through transfer bus at Biharshariff (BSEB) end which tripped earlier. The line was reportedly being closed through transfer bus isolator with circuit breaker in closed condition causing charging current flows through the isolator. However the said fault did not clear properly from Biharshariff (BSEB) end due to which all the three 400/220kV ICTs at Biharshariff (PG) tripped on back up O/C protection from HV side and LV side also.	Load Loss=300MW	26.06.14	2121 hrs	GD-I

18. NEW ELEMENTS COMMISSIONED in JUNE-2014

COMMISSIONING OF NEW GENERATING UNITS

REGION	SL. NO.	CONSTITUENT	UNIT NAME	UNIT NO	CAPACITY (MW)	DATE	TIME
WR	1	IPP	DB Power	1	660	19.06.14	00:00

COMMISSIONING OF NEW TRANSMISSION LINES

REGION	SL. NO.	CONSTITUENT	LINE NAME	CKT NO	KV	DATE	TIME
WR	1	DB Power	DB Power - Kotra	I	400	20.06.14	17:34
	2		DB Power - Kotra	II	400	20.06.14	17:50
	3	Sterlite, BDTCL	BHOPAL- BHOPAL	II	400	29.06.14	11:40
WR/SR	4	RECTPCL	RAICHUR - SHOLAPUR	II	765	30.06.14	14:56
SR	5	POWERGRID	Raichur - Kurnool	I	765	16.06.14	21:51
	6	NLC TPL	NTPL - Coastal Energy LILO	I	400	25.06.14	23:52
NER	7	NETCL	Silchar - Azara	I	400	23.06.14	16:17
	8		LILO of Sarsujai - Boko at Azara (Kukurmara)	I	220	25.06.14	23:52

COMMISSIONING OF NEW ICTS

REGION	SL. NO.	CONSTITUENT	STATION NAME	KV RATIO	CAPACITY (MVA)	DATE	TIME
WR	1	POWERGRID	Aurangabad	765/400	1500	29.06.14	14:36
ER	2		Rangpo	400/220	315	06.06.14	17:50
	3			400/200	315	28.06.14	18:35

COMMISSIONING OF BUS REACTORS

REGION	SL.NO.	CONSTITUENT	STATION NAME	KV	CAPACITY (MVAR)	DATE	TIME
WR	1	POWERGRID	BHOPAL	765	125	30.06.14	12:29

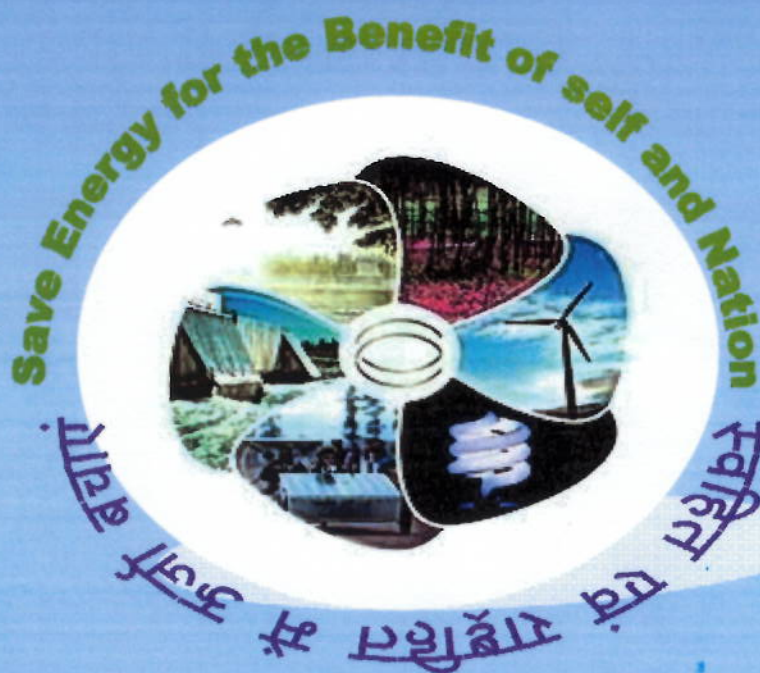
COMMISSIONING OF LINE REACTORS

REGION	SL. NO.	CONSTITUENT	STATION NAME	LINE NAME	KV	CAPACITY (MVAR)	DATE	TIME
				NIL				

19.विधुत विभव रूपरेखा माह – जून 2014
VOLTAGE PROFILE - JUNE 2014

क्र.स. Sl. No.	क्षेत्र REGION	उपकेंद्र SUBSTATION	VOLTAGE < V(lower)* (V=122,380,728 kV)	V(lower) < VOLTAGE < V(upper)*	VOLTAGE > V(upper)* (V=145, 420, 800 kV)	उच्चतम (कि.वो.) Maximum (kV)	निम्नतम (कि.वो.) Minimum (kV)	औसत (कि.वो.) Average (kV)
1	पूर्वी क्षेत्र ER	फरक्का FARAKKA	0%	93%	7%	424	406	416
2		कहलगाँव KAHALGAON	0%	47%	53%	427	409	419
3		तालचर TALCHER	0%	100%	0%	412	397	405
4		पुर्निया PURNEA	0%	97%	3%	422	397	412
5		मुजफ्फरपुर MUZAFFARPUR	0%	100%	0%	418	388	406
6		जमशेदपुर JAMSHEDPUR	0%	31%	69%	431	410	420
7		रेंगाली RENGALI	0%	100%	0%	408	393	401
8		जेयपुर JEYPORE	0%	97%	3%	437	384	412
1	उत्तरी क्षेत्र NR	नल्लागढ़ NALLAGARH	0%	100%	0%	416	385	402
2		भिवाड़ी BHIWADI	0%	81%	19%	433	392	412
3		बल्लभगढ़ BALLABGARH	0%	89%	11%	429	391	408
4		इलाहाबाद ALLAHABAD	0%	98%	2%	424	393	409
5		हिसार HISSAR	0%	100%	0%	418	384	396
6		बवाना BAWANA	0%	96%	3%	422	392	399
7		कानपुर KANPUR	0%	99%	1%	423	391	406
8		बस्सी BASSI	0%	74%	26%	431	391	409
9		लखनऊ LUCKNOW 765 kV	0%	99%	1%	782	721	751
10		मोगा MOGA	0%	100%	0%	416	388	401
11		रतनगढ़ RATANGARH	0%	98%	2%	422	387	404
1	पश्चिमी क्षेत्र WR	आसोज ASOJ	0%	100%	0%	419	395	410
2		इटारसी ITARSI	0%	93%	7%	426	396	413
3		जेतपुर JETPUR	0%	98%	2%	431	394	398
4		कासौर KASOR	0%	100%	0%	419	401	409
5		कोल्हापुर KOLHAPUR	0%	100%	0%	419	389	407
6		बीना BINA	0%	100%	0%	425	398	411
7		ग्वालियर GWALIOR	0%	100%	0%	404	397	400
8		रायपुर RAIPUR	0%	50%	50%	430	408	421
9		जबलपुर JABALPUR	0%	100%	0%	421	391	406
10		धुले DHULE	0%	85%	15%	433	383	420
1	दक्षिणी क्षेत्र SR	श्रीपेरुपुडूर SRIPERUMPUDUR	0%	100%	0%	419	384	401
2		नेवेली NEVELI	0%	87%	13%	426	400	414
3		सेलम SALEM	0%	100%	0%	419	381	400
4		बंगलूरु BANGALORE	1%	99%	0%	421	377	397
5		होसूर HOSUR	0%	100%	0%	418	381	398
6		रामागुंडम RAMAGUNDAM	0%	97%	3%	426	410	417
7		विजयवाड़ा VIJAYAWADA	0%	31%	69%	432	415	424
8		तिरुवनंतपुरम TIRIVANDRUM	2%	98%	0%	421	374	399
9		हैदराबाद HYDERABAD	0%	50%	50%	436	408	419
1	पूर्वोत्तर क्षेत्र NER	मिसा MISA	0%	100%	0%	417	391	404
2		बलिपारा BALIPARA	0%	100%	0%	414	390	401
3		बोंगईगाँव BONGAIGAON	0%	100%	0%	409	388	394
4		हाफ्लोंग HAFLONG 132 kV	0%	100%	0%	136	126	131
5		आइज़ोल AIZWAL 132 kV	1%	99%	0%	136	123	129
6		कुमारघाट KUMARGHAT 132 kV	0%	100%	0%	135	127	131
7		इम्फाल IMPHAL 132 kV	74%	26%	0%	136	122	117
8		खलेरियट Khlieriat PG 132 kV	0%	100%	0%	136	126	131

*Percentage is calculated w.r.t. Time of one month.



POWER SYSTEM OPERATION CORPORATION LIMITED

पाँवर सिस्टम ऑपरेशन कारपोरेशन लिमिटेड

NATIONAL LOAD DESPATCH CENTRE - राष्ट्रीय भार प्रेषण केन्द्र

POWERGRID, B-9, Qutab Institutional Area,
Katwaria Sarai, New Delhi-110016.