

# पावर सिस्टम ऑपरेशन कारपोरेशन लिमिटेड

(पावरग्रिड की पूर्ण स्वामित्व प्राप्त सहायक कंपनी)

## POWER SYSTEM OPERATION CORPORATION LIMITED

(A wholly owned subsidiary of POWERGRID)



पंजीकृत एवं केन्द्रीय कार्यालय : बी - 9, कुतुब इंस्टीट्यूशनल एरिया, कटवारिया सराय, नई दिल्ली - 110 016  
Registered & Corporate Office : B - 9, Qutab Institutional Area, Katwaria Sarai, New Delhi - 110 016  
Website : www.nldc.in, www.nldcindia.in, Tel. : 011-26536832, 26524522, Fax : 011-26524525, 26536901

संदर्भ संख्या:-POSOCO/NLDC/GM/

दिनांक: 24.12.2012

सेवा में,

वितरण सूची के अनुसार


विषय:- निष्पादन रिपोर्ट - नवम्बर 2012

महोदय,

आई०ई०जी०सी०-2010 के प्रावधान के अनुसार, - नवम्बर 2012 माह की अखिल भारतीय प्रणाली की निष्पादन रिपोर्ट

धन्यवाद

भवदीय

  
(अवधेश मणि) 24.12.2012

अपर महाप्रबंधक

(रा०भा०प्रे०के०)

संलग्नक: मासिक प्रणाली रिपोर्ट

## Distribution List

1. Secretary ,CERC, 3<sup>rd</sup> & 4<sup>th</sup> Floor , Chanderlok Building,36,Janpath,New Delhi-110001
2. Chief Engineer(GM),CEA,Sewa Bhavan, R.K.Puram , New Delhi-110066
3. Member Secretary ,NRPC,18/A,SJSS Marg, Katwaria Sarai,New Delhi-110016
- 4.Member Secretary ,WRPC,F-3,MIDC Area,Andheri (East),Mumbai-400093
- 5.Member Secretary,SRPC,29,Race Course Cross Road,Bangalore-560009
6. Member Secretary,ERPC,14,Golf Club Road , Kolkata-7000033
7. Member Secretary,NERPC,Meghalaya State Housing Finance Cooperative Society Ltd.  
Building,Nongrim Hills , Shillong -793003
8. General Manager , ERLDC,14, Golf Club Road , Kolkata-7000033
9. General Manager, WRLDC,F-3,MIDC Area,Andheri (East),Mumbai-400093
- 10.General Manager, NRLDC,18/A,SJSS Marg, Katwaria Sarai,New Delhi-110016
11. General Manager , SRLDC, 29,Race Course Cross Road,Bangalore-560009
12. AGM,NERLDC,Dongtiah,Lower Nongrah,Laplang,Shillong-793006

POWER SYSTEM OPERATION CORPORATION LTD  
NATIONAL LOAD DESPATCH CENTRE



OPERATIONAL PERFORMANCE REPORT FOR THE  
MONTH OF NOVEMBER 2012

## CONTENTS

1. SUMMARY OF REPORT FOR THE MONTH OF NOVEMBER 2012
2. REGION WISE INSTALLED CAPACITY
3. PEAK DEMAND MET AT NATIONAL LEVEL
4. ENERGY CONSUMPTION AT NATIONAL LEVEL
5. FREQUENCY PROFILE
6. HYDRO GENERATION AT NATIONAL LEVEL
7. WIND GENERATION AT NATIONAL LEVEL
8. PEAK DEMAND & ENERGY MET AT REGIONAL LEVEL
9. SCHEDULE & DRAWAL AT REGIONAL LEVEL
10. INTER-REGIONAL EXCHANGES
11. BILATERAL SHORT-TERM OPEN ACCESS & UI DETAILS
12. POWER MARKET INFORMATION
13. RENEWABLE ENERGY CERTIFICATE MECHANISM
14. IMPORTANT EVENTS/DISTURBANCES
15. IMPORTANT ELEMENTS COMMISSIONED
16. VOLTAGE PROFILE

## **SUMMARY OF REPORT FOR THE MONTH OF NOVEMBER 2012**

- During the month of November 2012, the overall system was running normal to the large extent. The maximum of all India peak demand met was 110870 MW (on 12 -11-2012) which is 2.49% more as compared to last year November month demand (108167MW) and 5.43% less as compared to October 2012 demand (117236MW).
- For 85.83% of time the NEW grid frequency was in the IEGC band (49.7 – 50.2 Hz) against 90.39% of the time in the last month (October 2012). For SR Grid, the frequency remained within the IEGC band for 90.39 % of the time against 89.38 % of the time in the last month (October 2012).
- All India energy consumption was 71861MU at the average of 2395 MU/day which is 4.58% less than that of last month (October 2012) average energy consumption (77819MUs, Average 2510 MU/day) and 2.92% more than the last year November month average energy consumption (69818MU, Average 2327 MU/day).
- There was around 16.43% decrement in average all India Hydro generation compared to last year & 25.13% decrement compared to last month.
- Regarding wind generation, there was around 28.95% decrement in average all India wind generation compared to last month. November 2012 average wind generation was 25MU/day against 35 MU/day in October 2012.

**6. ALL INDIA REGIONWISE GENERATING INSTALLED CAPACITY (MW) OF POWER UTILITIES INCLUDING ALLOCATED SHARES IN JOINT AND CENTRAL SECTOR UTILITIES**

(As on 30-11-12)

SL. NO.	REGION	THERMAL			Nuclear	HYDRO (Renewable)	R.E.S.@ (MNRE)	TOTAL	
		COAL	GAS	DSL					TOTAL
1	Northern	31323.50	4671.26	12.99	36007.75	1620.00	15456.75	4623.24	57707.74
2	Western	43099.50	8254.81	17.48	51371.79	1840.00	7447.50	8450.04	69109.33
3	Southern	23782.50	4962.78	939.32	29684.60	1320.00	11338.03	12096.78	54439.41
4	Eastern	22607.88	190.00	17.20	22815.08	0.00	3882.12	436.71	27133.91
5	N. Eastern	60.00	824.20	142.74	1026.94	0.00	1200.00	243.28	2470.22
6	Islands	0.00	0.00	70.02	70.02	0.00	0.00	6.10	76.12
7	<b>All India</b>	<b>120873.38</b>	<b>18903.05</b>	<b>1199.75</b>	<b>140976.18</b>	<b>4780.00</b>	<b>39324.40</b>	<b>25856.14</b>	<b>210936.72</b>

Captive Generation Capacity in Industries having demand of 1 MW or above, Grid interactive(as on 31-03-2011)=34444.12 MW

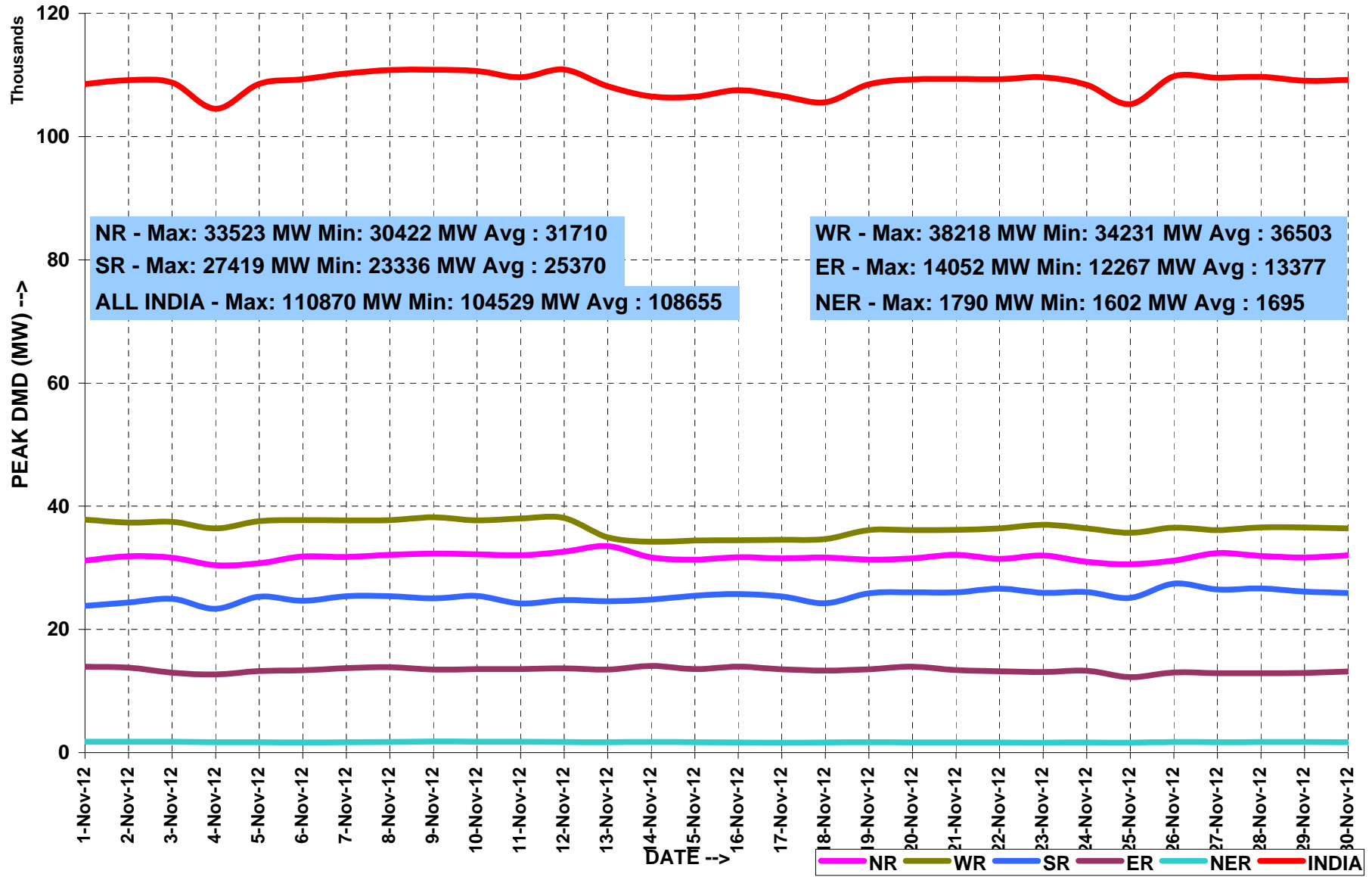
## PEAK DEMAND MET AT NATIONAL LEVEL

MONTH:- NOVEMBER 2012

All figures in MW

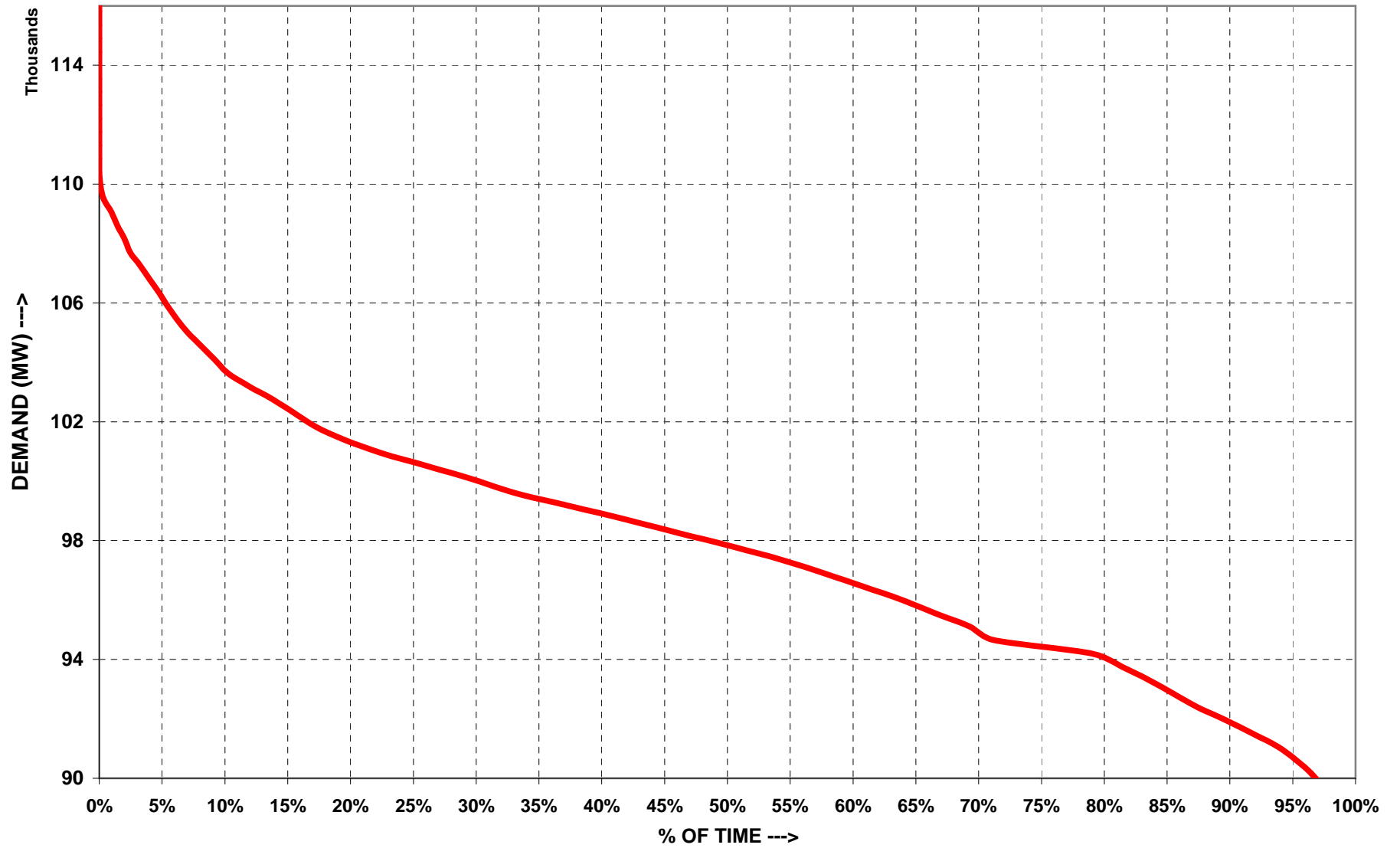
Date	NR	WR	SR	ER	NER	TOTAL
11/1/2012	31151	37829	23825	13961	1761	108527
11/2/2012	31869	37341	24366	13800	1767	109143
11/3/2012	31633	37458	24950	12959	1750	108750
11/4/2012	30422	36405	23336	12694	1672	104529
11/5/2012	30718	37589	25307	13249	1696	108559
11/6/2012	31856	37743	24656	13377	1666	109298
11/7/2012	31754	37699	25377	13704	1699	110233
11/8/2012	32116	37732	25372	13873	1718	110811
11/9/2012	32308	38218	25053	13477	1790	110846
11/10/2012	32190	37675	25442	13577	1762	110646
11/11/2012	32051	38028	24230	13554	1754	109617
11/12/2012	32610	38085	24767	13670	1738	110870
11/13/2012	33523	34934	24553	13463	1706	108179
11/14/2012	31666	34231	24860	14052	1714	106523
11/15/2012	31334	34429	25460	13550	1687	106460
11/16/2012	31705	34489	25728	13970	1654	107546
11/17/2012	31517	34567	25340	13529	1630	106583
11/18/2012	31688	34650	24269	13324	1644	105575
11/19/2012	31310	36122	25862	13523	1680	108497
11/20/2012	31518	36136	26007	13935	1656	109252
11/21/2012	32111	36179	26006	13408	1633	109337
11/22/2012	31440	36393	26621	13194	1656	109304
11/23/2012	32007	36989	25946	13075	1602	109619
11/24/2012	30986	36384	26065	13292	1660	108387
11/25/2012	30583	35673	25103	12267	1619	105245
11/26/2012	31155	36504	27419	12992	1725	109795
11/27/2012	32394	36106	26489	12880	1686	109555
11/28/2012	31925	36535	26650	12874	1713	109697
11/29/2012	31699	36552	26141	12942	1728	109062
11/30/2012	32051	36403	25914	13157	1671	109196
<b>MAXIMUM</b>	33523	38218	27419	14052	1790	110870
<b>MINIMUM</b>	30422	34231	23336	12267	1602	104529
<b>AVERAGE</b>	31710	36503	25370	13377	1695	108655
<b>All Time Max.</b>	38263	40699	31714	14976	1801	119089
<b>Date</b>	15.06.12	20.10.12	30.08.12	01.10.12	29.10.12	30.05.12

## PEAK DEMANDS MET DURING THE MONTH OF NOVEMBER' 2012





# ALL INDIA LOAD DURATION CURVE FOR NOVEMBER' 2012

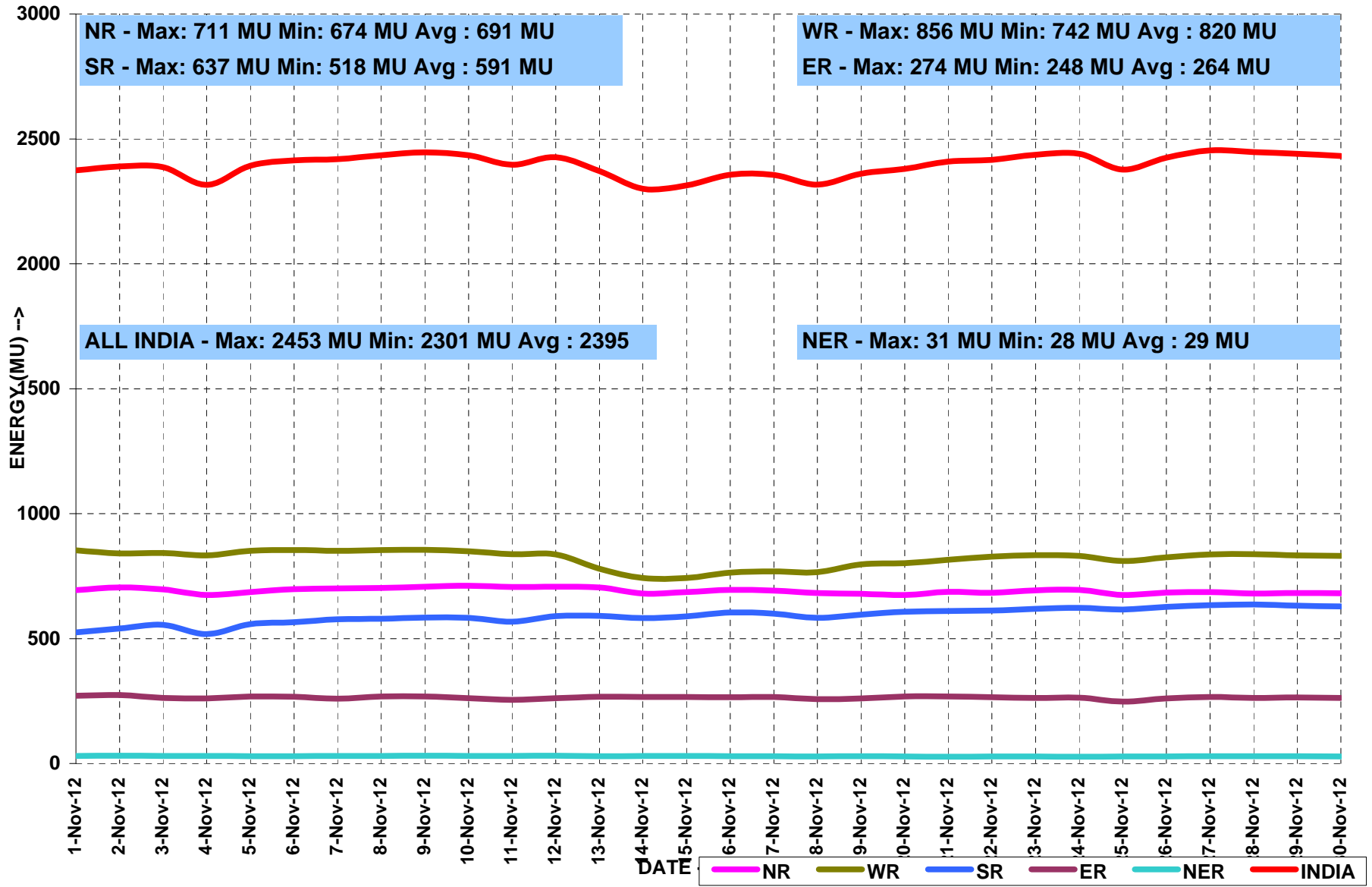


**ENERGY MET AT NATIONAL LEVEL****MONTH:- NOVEMBER 2012**

All figures in MU

Date	NR	WR	SR	ER	NER	TOTAL
11/1/2012	694	853	525	272	30	2375
11/2/2012	704	841	540	274	31	2390
11/3/2012	697	843	555	262	30	2387
11/4/2012	675	833	518	260	30	2316
11/5/2012	686	852	558	269	29	2393
11/6/2012	698	854	566	267	29	2414
11/7/2012	701	852	577	260	30	2418
11/8/2012	702	854	579	269	30	2434
11/9/2012	707	856	584	269	31	2446
11/10/2012	711	849	583	261	31	2435
11/11/2012	706	838	568	255	30	2397
11/12/2012	708	837	590	261	31	2426
11/13/2012	704	779	591	267	30	2371
11/14/2012	680	742	582	266	30	2301
11/15/2012	686	742	589	266	30	2314
11/16/2012	694	764	604	265	30	2357
11/17/2012	692	769	600	266	29	2356
11/18/2012	682	766	583	257	29	2317
11/19/2012	679	797	596	260	29	2361
11/20/2012	674	802	607	268	28	2380
11/21/2012	688	816	610	268	28	2409
11/22/2012	683	828	612	265	28	2416
11/23/2012	693	834	619	263	28	2436
11/24/2012	694	831	623	264	28	2440
11/25/2012	675	811	616	248	28	2377
11/26/2012	684	825	627	260	28	2425
11/27/2012	686	837	634	267	29	2453
11/28/2012	681	837	637	263	29	2447
11/29/2012	682	833	632	264	29	2440
11/30/2012	681	831	629	262	29	2431
<b>TOTAL</b>	<b>20727</b>	<b>24604</b>	<b>17734</b>	<b>7918</b>	<b>879</b>	<b>71861</b>
<b>MAXIMUM</b>	<b>711</b>	<b>856</b>	<b>637</b>	<b>274</b>	<b>31</b>	<b>2453</b>
<b>MINIMUM</b>	<b>674</b>	<b>742</b>	<b>518</b>	<b>248</b>	<b>28</b>	<b>2301</b>
<b>AVERAGE</b>	<b>691</b>	<b>820</b>	<b>591</b>	<b>264</b>	<b>29</b>	<b>2395</b>
<b>All Time Max.</b>	<b>937</b>	<b>884</b>	<b>720</b>	<b>321</b>	<b>34</b>	<b>2761</b>
<b>Date</b>	<b>23.06.12</b>	<b>22.10.12</b>	<b>30.05.12</b>	<b>30.09.12</b>	<b>05.09.12</b>	<b>30.05.12</b>

## ENERGY MET DURING THE MONTH OF NOVEMBER' 2012

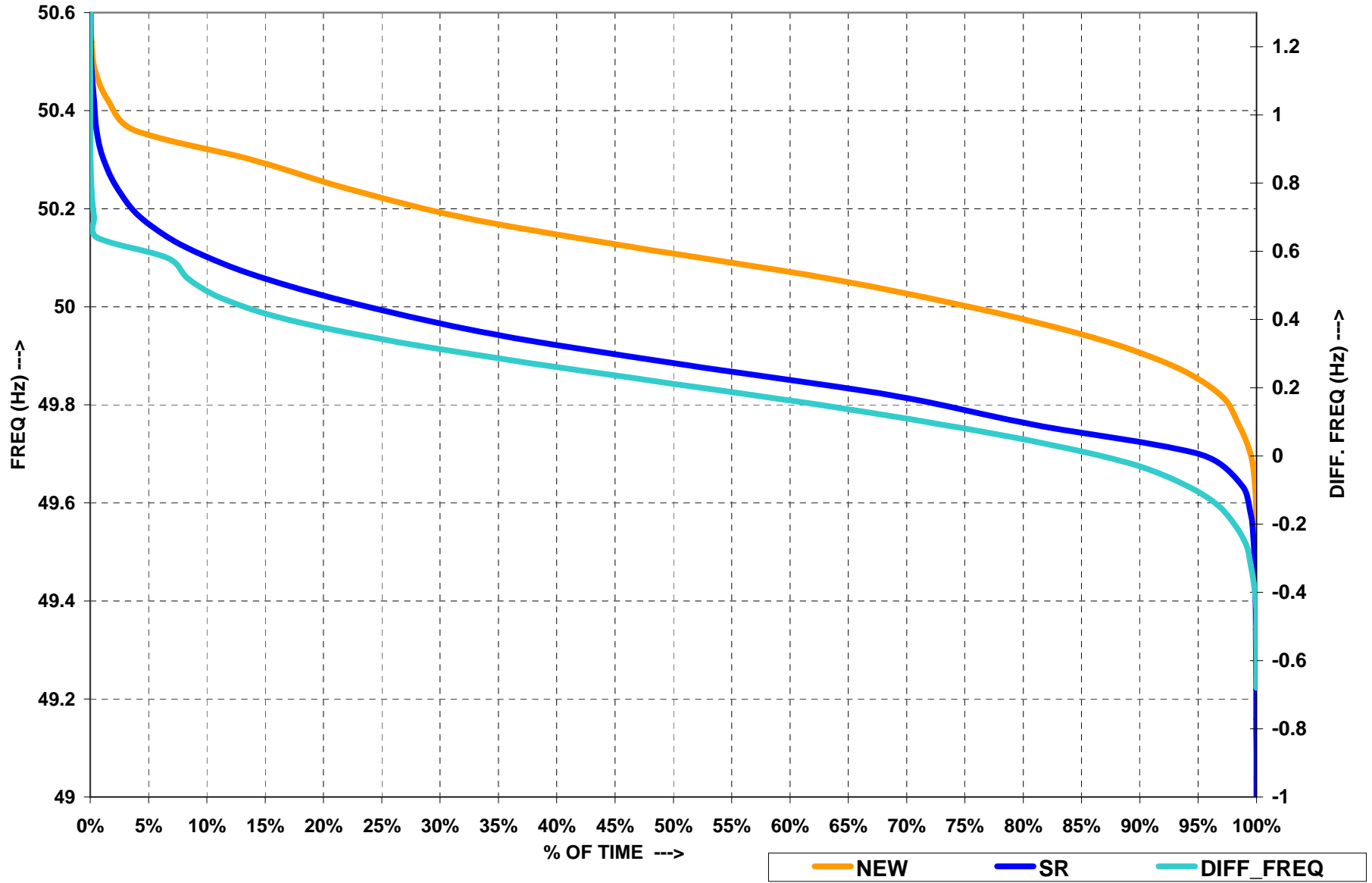


**FREQUENCY PROFILE FOR THE MONTH OF NOVEMBER 2012**

<b>SR GRID</b>										
<b>FREQUENCY PROFILE</b>		<b>&lt; 48.5</b>	<b>48.5 - 49.5</b>	<b>&lt; 49.5</b>	<b>49.5 - 50.2</b>	<b>&gt;50.2</b>		<b>Max. Freq</b>	<b>Min. Freq</b>	<b>Avg. Freq</b>
<b>% TIME</b>	<b>Apr-12</b>	0.00	7.79	7.79	91.28	0.93		50.66	48.66	49.69
	<b>May-12</b>	0.00	5.61	5.61	94.01	0.38		50.63	48.81	49.7
	<b>Jun-12</b>	0.00	7.83	7.83	91.03	1.14		50.79	48.86	49.68
	<b>Jul-12</b>	0.00	0.00	6.95	92.18	0.87		50.61	48.81	49.69
	<b>Aug-12</b>	0.00	3.17	3.17	95.57	1.26		50.55	48.86	49.75
	<b>Sep-12 (till 16 sep)</b>	0.00	1.68	1.68	95.88	2.44		50.58	49.12	49.81
<b>FREQUENCY PROFILE</b>		<b>&lt;49.0</b>	<b>49.0-49.7</b>	<b>&lt;49.7</b>	<b>49.7-50.2</b>	<b>&gt;50.2</b>		<b>Max. Freq</b>	<b>Min. Freq</b>	<b>Avg. Freq</b>
<b>% TIME</b>	<b>Sep-12 (17 Sep onwards)</b>	0.00	0.00	18.37	81.43	0.2		50.51	49.12	49.79
	<b>Oct-12</b>	0.00	8.26	8.26	89.38	2.36		50.73	49.19	49.86
	<b>Nov-12</b>	0.00	0.00	4.16	91.85	3.99		50.69	49.15	49.91

<b>NEW GRID</b>										
<b>FREQUENCY PROFILE</b>		<b>&lt; 48.5</b>	<b>48.5 - 49.5</b>	<b>&lt; 49.5</b>	<b>49.5 - 50.2</b>	<b>&gt;50.2</b>		<b>Max. Freq</b>	<b>Min. Freq</b>	<b>Avg. Freq</b>
<b>% TIME</b>	<b>Apr-12</b>	0.00	2.38	2.38	93.68	3.94		50.66	49.08	49.9
	<b>May-12</b>	0.00	10.82	10.82	87.82	1.36		50.75	48.82	49.8
	<b>Jun-12</b>	0.00	19.95	19.95	78.66	1.39		50.68	48.75	49.7
	<b>Jul-12</b>	0.00	24.38	24.38	73.59	2.03		51.21	49.79	49.68
	<b>Aug-12</b>	0.00	1.57	1.57	89.72	8.71		50.65	48.82	49.95
	<b>Sep-12 (till 16 sep)</b>	0.00	0.60	0.60	83.73	15.67		50.65	48.96	50.02
<b>FREQUENCY PROFILE</b>		<b>&lt;49.0</b>	<b>49.0-49.7</b>	<b>&lt;49.7</b>	<b>49.7-50.2</b>	<b>&gt;50.2</b>		<b>Max. Freq</b>	<b>Min. Freq</b>	<b>Avg. Freq</b>
<b>% TIME</b>	<b>Sep-12 (17 Sep onwards)</b>	0.00	3.22	3.22	84.09	12.69		50.65	48.96	50.03
	<b>Oct-12</b>	0.00	3.33	3.33	90.39	6.28		50.61	49.37	49.98
	<b>Nov-12</b>	0.00	0.05	1.79	85.83	12.38		50.63	49.33	50.02

# FREQUENCY DURATION CURVES FOR NOVEMBER' 2012



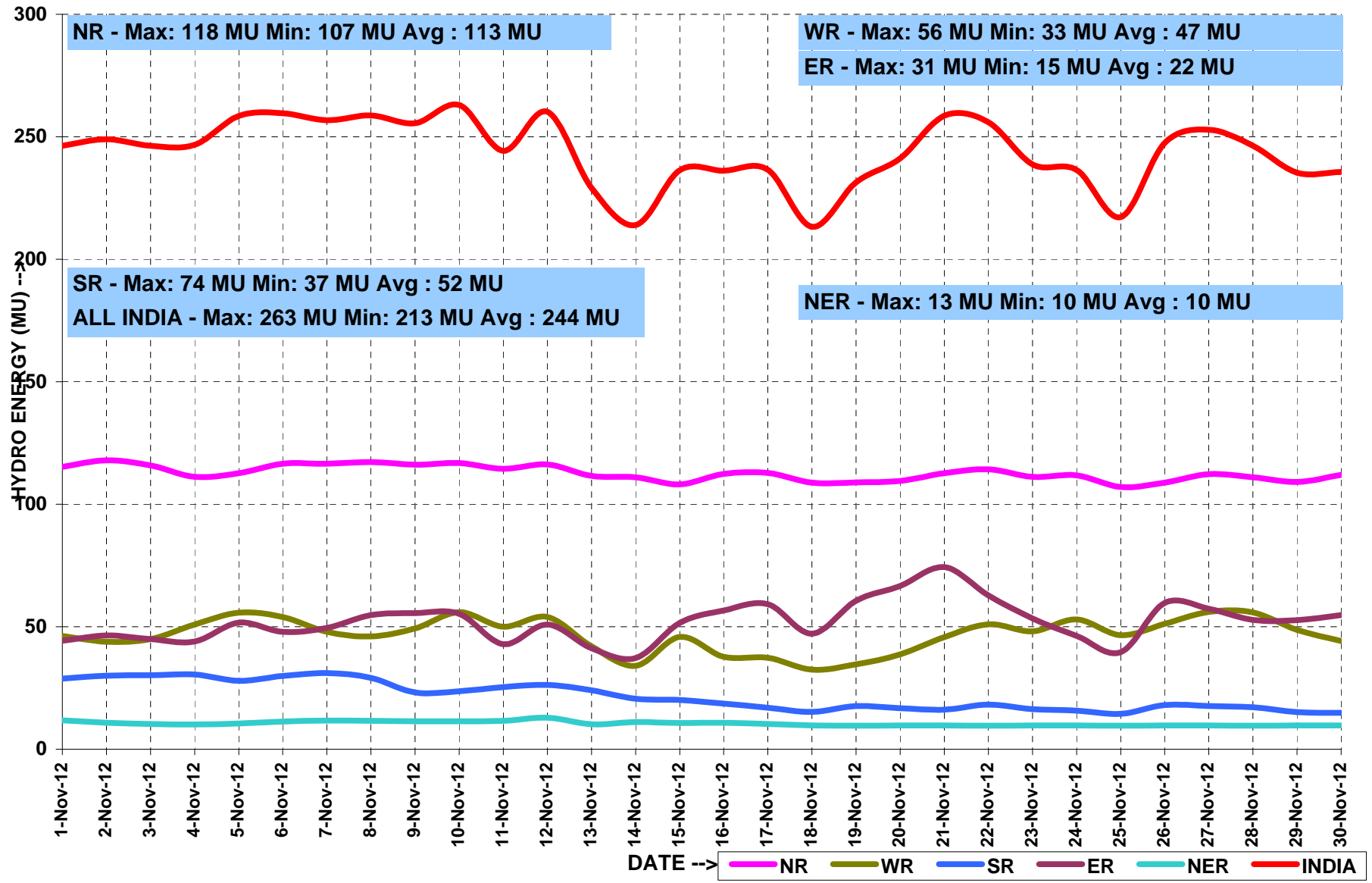
## HYDRO GENERATION AT NATIONAL LEVEL

MONTH:- NOVEMBER 2012

All figures in MU

Date	NR	WR	SR	ER	NER	TOTAL
11/1/2012	115	46	44	29	12	246
11/2/2012	118	44	46	30	11	249
11/3/2012	116	45	45	30	10	246
11/4/2012	111	51	44	31	10	247
11/5/2012	113	56	52	28	11	259
11/6/2012	117	54	48	30	11	260
11/7/2012	117	48	50	31	12	257
11/8/2012	117	46	55	29	12	259
11/9/2012	116	49	56	23	11	256
11/10/2012	117	56	55	24	11	263
11/11/2012	115	50	43	25	12	244
11/12/2012	116	54	51	26	13	260
11/13/2012	112	42	41	24	10	229
11/14/2012	111	34	37	21	11	214
11/15/2012	108	46	52	20	11	236
11/16/2012	112	38	57	19	11	236
11/17/2012	113	37	59	17	10	237
11/18/2012	109	33	47	15	10	213
11/19/2012	109	35	61	18	10	231
11/20/2012	110	39	67	17	10	241
11/21/2012	113	46	74	16	10	259
11/22/2012	114	51	63	18	10	256
11/23/2012	111	48	53	16	10	239
11/24/2012	112	53	46	16	10	236
11/25/2012	107	47	40	15	10	217
11/26/2012	109	51	60	18	10	247
11/27/2012	112	56	57	18	10	253
11/28/2012	111	56	53	17	10	246
11/29/2012	109	49	53	15	10	235
11/30/2012	112	44	55	15	10	236
<b>TOTAL</b>	<b>3380</b>	<b>1402</b>	<b>1562</b>	<b>649</b>	<b>314</b>	<b>7307</b>
<b>MAXIMUM</b>	<b>118</b>	<b>56</b>	<b>74</b>	<b>31</b>	<b>13</b>	<b>263</b>
<b>MINIMUM</b>	<b>107</b>	<b>33</b>	<b>37</b>	<b>15</b>	<b>10</b>	<b>213</b>
<b>AVERAGE</b>	<b>113</b>	<b>47</b>	<b>52</b>	<b>22</b>	<b>10</b>	<b>244</b>

## HYDRO ENERGY DURING THE MONTH OF NOVEMBER' 2012



## WIND GENERATION AT NATIONAL LEVEL

MONTH:- NOVEMBER 2012

All figures in MU

Date	NR	WR	SR	ER	NER	TOTAL
11/1/2012	1.6	24.9	44.4	...	...	70.9
11/2/2012	1.6	16.9	38.4	...	...	56.9
11/3/2012	0.7	12.0	42.5	...	...	55.2
11/4/2012	0.4	8.3	11.7	...	...	20.4
11/5/2012	1.6	6.8	6.1	...	...	14.5
11/6/2012	0.9	6.8	3.3	...	...	11.0
11/7/2012	0.7	5.9	2.4	...	...	9.0
11/8/2012	2.5	5.8	1.0	...	...	9.3
11/9/2012	3.6	5.9	4.4	...	...	13.9
11/10/2012	2.6	5.7	7.8	...	...	16.1
11/11/2012	4.1	6.2	7.5	...	...	17.8
11/12/2012	0.6	8.2	9.0	...	...	17.8
11/13/2012	2.5	10.0	12.2	...	...	24.7
11/14/2012	0.9	9.4	12.6	...	...	22.9
11/15/2012	0.9	15.4	12.5	...	...	28.8
11/16/2012	0.6	10.5	10.2	...	...	21.3
11/17/2012	0.5	9.2	7.0	...	...	16.7
11/18/2012	4.4	9.3	5.9	...	...	19.6
11/19/2012	9.6	14.6	4.6	...	...	28.8
11/20/2012	4.9	19.6	5.2	...	...	29.7
11/21/2012	2.8	6.7	4.9	...	...	14.4
11/22/2012	1.4	6.4	5.2	...	...	13.0
11/23/2012	1.4	6.7	6.4	...	...	14.5
11/24/2012	2.5	4.8	7.9	...	...	15.2
11/25/2012	4.6	9.8	18.8	...	...	33.2
11/26/2012	1.7	8.9	19.0	...	...	29.6
11/27/2012	1.7	7.1	20.8	...	...	29.6
11/28/2012	4.2	5.9	17.4	...	...	27.5
11/29/2012	7.0	24.5	14.7	...	...	46.2
11/30/2012	7.8	22.0	4.7	...	...	34.5
<b>TOTAL</b>	<b>80</b>	<b>314</b>	<b>369</b>	<b>...</b>	<b>...</b>	<b>763</b>
<b>MAXIMUM</b>	<b>10</b>	<b>25</b>	<b>44</b>	<b>...</b>	<b>...</b>	<b>71</b>
<b>MINIMUM</b>	<b>0</b>	<b>5</b>	<b>1</b>	<b>...</b>	<b>...</b>	<b>9</b>
<b>AVERAGE</b>	<b>3</b>	<b>10</b>	<b>12</b>	<b>...</b>	<b>...</b>	<b>25</b>



**ACTUAL POWER SUPPLY POSITION - NOVEMBER 2012**

REGION	STATE	Requirement/Availability in MU/DAY			Requirement/Availability in MU				Peak Demand/Peak Met in MW			
		Requirement	Energy met	Surplus(+)/ Deficit(-)	Requirement	Energy met	Surplus(+)/ Deficit(-)	% Shortage	Requirement	Peak Demand	Surplus(+)/ Deficit(-)	% Shortage
NR	Chandigarh	3	3	0	100	100	0	0	194	194	0	0
	Delhi	56	56	0	1671	1670	-1	0	3234	3234	0	0
	Haryana	101	98	-3	3022	2930	-92	3	5515	5197	-318	-6
	H.P.	23	23	0	684	679	-5	1	1329	1304	-25	-2
	J&K	45	34	-11	1365	1023	-341	25	2346	1759	-587	-25
	Punjab	91	87	-3	2722	2623	-99	4	4924	4924	0	0
	Rajasthan	161	159	-2	4828	4782	-46	1	7653	7527	-126	-2
	U.P.	237	200	-37	7098	6000	-1098	15	12876	11716	-1160	-9
	Uttarakhand	30	28	-2	888	832	-56	6	1679	1449	-230	-14
	NFF/Railway	2	2	0	70	70	0	0	103	103	0	0
	<b>TOTAL</b>	<b>748</b>	<b>690</b>	<b>-58</b>	<b>22448</b>	<b>20710</b>	<b>-1738</b>	<b>8</b>	<b>36249</b>	<b>34389</b>	<b>-1860</b>	<b>-5</b>
WR	Gujarat	232	232	0	6954	6947	-7	0	11582	11566	-16	0
	Madhya Pradesh	197	169	-28	5910	5060	-849	-14	10308	9692	-616	-6
	Chhattisgarh	54	54	0	1622	1614	-8	-1	2938	2828	-110	-4
	Maharashtra	349	341	-9	10483	10216	-268	-3	17611	16818	-793	-5
	Goa	8	8	0	232	228	-4	-2	425	395	-30	-7
	D&D	6	5	-1	172	154	-17	-10	259	257	-2	-1
	DNH	13	13	0	386	385	-1	0	594	568	-26	-4
	<b>TOTAL</b>	<b>859</b>	<b>820</b>	<b>-38</b>	<b>25759</b>	<b>24604</b>	<b>-1155</b>	<b>-4</b>	<b>40302</b>	<b>38904</b>	<b>-1398</b>	<b>-3</b>
SR	AP-TRANSCO	263	209	-54	7880	6266	-1614	-20	12143	10217	-1926	-16
	KPTCL	169	146	-22	5065	4391	-674	-13	8938	7852	-1086	-12
	KSEB	57	54	-3	1708	1619	-89	-5	2979	2993	14	0
	TNEB	232	177	-55	6949	5302	-1647	-24	10161	8518	-1643	-16
	PONDY	6	6	0	167	165	-2	-1	298	297	-1	0
		<b>TOTAL</b>	<b>726</b>	<b>591</b>	<b>-134</b>	<b>21770</b>	<b>17744</b>	<b>-4026</b>	<b>-18</b>	<b>34943</b>	<b>27846</b>	<b>-7097</b>
ER	Bihar	39	33	-39	1170	1004	-166	-14	2250	1687	-563	-25
	JSEB	21	19	-2	620	566	-54	-9	1115	1066	-49	-4
	GRIDCO	51	51	0	1530	1529	-1	0	2550	2745	195	8
	DVC	71	59	-11	2120	1782	-338	-16	3615	3232	-383	-11
	West Bengal	107	106	-1	3200	3175	-25	-1	6509	6563	54	1
	<b>TOTAL</b>	<b>288</b>	<b>269</b>	<b>-19</b>	<b>8640</b>	<b>8056</b>	<b>-584</b>	<b>-7</b>	<b>15674</b>	<b>14169</b>	<b>-1505</b>	<b>-10</b>
NER	Arunachal Pradesh	1	1	0	43	40	-3	-6.3	104	103	-1	-1
	Assam	17	16	-1	522	491	-31	-5.9	1197	1105	-92	-8
	Manipur	2	2	0	54	51	-3	-6.0	115	114	-1	-1
	MeSEB	5	4	-1	147	130	-17	-11.4	288	285	-3	-1
	Mizoram	1	1	0	34	32	-2	-6.8	68	66	-2	-3
	Nagaland	1	1	0	43	41	-2	-4.5	94	93	-1	-1
	Tripura	3	3	0	102	98	-3	-3.2	194	193	-1	0
	<b>TOTAL</b>	<b>31</b>	<b>29</b>	<b>-2</b>	<b>944</b>	<b>883</b>	<b>-61</b>	<b>-6.5</b>	<b>2060</b>	<b>1958</b>	<b>-102</b>	<b>-5</b>

**SCHEDULE AND DRAWAL OF CONSTITUENTS - NOVEMBER 2012**

REGION	STATE	SCHEDULE (MU)	ACTUAL DRAWAL (MU)	Over drawal(+)/ Under Drawal(-) (MU)	SCHEDULE (MU/DAY)	ACTUAL DRAWAL (MU/DAY)	Over drawal(+)/ Under Drawal(-) (MU/DAY)
NR	Chandigarh	101	103	3	3	3	0
	Delhi	845	747	-98	28	25	-3
	Haryana	1338	1132	-206	45	38	-7
	H.P.	447	491	44	15	16	1
	J&K	818	840	22	27	28	1
	Punjab	960	956	-4	32	32	0
	Rajasthan	1896	1896	0	63	63	0
	U.P.	2424	2386	-38	81	80	-1
	Uttarakhand	534	573	39	18	19	1
	NFF/Railway	72	70	-2	2	2	0
WR	Gujarat	1405	1357	-48	47	45	-2
	Madhya Pradesh	2753	2877	124	92	96	4
	Maharashtra	3568	3582	15	119	119	0
	Chhattisgarh	352	316	-36	12	11	-1
	Goa	220	214	-6	7	7	0
	D&D	163	154	-8	5	5	0
	D&NH	401	385	-16	13	13	-1
SR	APTRANSCO	2102	2173	71	70	72	2
	KPTCL	883	900	17	29	30	1
	KSEB	1026	1091	65	34	36	2
	TNEB	1608	1634	26	54	54	1
	PONDY	204	175	-29	7	6	-1
	GOA(SR)	52	51	-1	2	2	0
ER	Bihar	1000	1006	6	33	34	0
	JSEB	269	266	-3	9	9	0
	DVC	-772	-725	47	-26	-24	2
	GRIDCO	445	464	19	15	15	1
	Sikkim	166	194	28	6	6	1
	WBSEB	35	31	-5	1	1	0
NER	Arunachal Pradesh	38	45	6	1	1	0
	Assam	336	341	6	11	11	0
	Manipur	51	51	1	2	2	0
	MeSEB	67	82	15	2	3	1
	Mizoram	28	31	3	1	1	0
	Nagaland	32	39	6	1	1	0
	Tripura	12	6	-6	0	0	0

## Inter-Regional Exchanges (2012-2013)

All figs. in MUs

Provisional data - subject to change

		Apr-12	May-12	Jun-12	Jul-12	Aug-12	Sep-12	Oct-12	Nov-12	Dec-12	Jan-13	Feb-13	Mar-13	Total FINANCIAL YEAR2012-13 (Till June'12)
*	WR-NR	HVDC Vindhyachal B/B	22.31	146.15	203.64	198.81	212.96	102.09	131.08	7.61				1024.65
		HVDC Mundra-M'garh#				221.62	328.28	373.97	491.33	482.80				1898.00
		220KV Aur.-Mal.	0.33	0.00	1.51	9.17	0.00	1.18	0.00	0.00				12.18
		220KV Kota/Morak-Badod	6.94	40.25	11.71	42.95	16.11	22.89	6.25	2.73				149.83
		400KV Agra-Gwalior D/C	460.85	610.16	697.97	712.15	378.55	362.60	311.59	145.61				3679.49
		400KV Kankroli-Zerda	4.20	20.06	72.81	66.97	0.99	10.67	4.49	0.00				180.19
		400KV Bhinmal-Zerda	3.30	40.92	72.65	94.51	4.58	29.07	31.31	3.82				280.16
*	ER-NR	400KV Barh - Balia D/C	114.24	214.97	175.75	122.11	46.34	61.71	282.67	103.19				1120.98
		HVDC Sasaram B/B (Bypass wef 1 DEC'08)	22.34	63.33	58.57	180.46	101.20	127.47	33.20	102.62				689.19
		765 kV Gaya - Fatehpur					82.99	66.01	101.65	109.05				359.70
		400KV Mzp-Gkp D/C	309.11	484.33	447.30	670.69	499.81	481.15	536.30	282.99				3711.67
		220/132kV	105.31	98.91	105.40	98.24	101.12	109.94	106.68	99.39				824.97
		400KV Patna-Balia D/C	224.55	320.90	299.47	370.14	256.53	253.89	209.32	231.84				2166.64
		400kV Pusauli- Balia	0.00	0.00	7.54	13.48	6.48	9.36	30.89	1.43				69.18
		400KV Biharshariff-Balia D/C	208.57	293.31	274.10	330.85	231.34	198.45	241.50	184.24				1962.37
*	NR-WR	HVDC Vindhyachal B/B	70.00	17.02	16.83	19.77	6.86	26.18	55.01	194.44				406.12
		220KV Aur.-Mal.	30.53	32.46	17.41	10.57	35.00	36.63	69.13	100.33				332.06
		220KV Kota/Morak-Badod	7.12	0.67	0.80	0.00	14.83	4.28	37.09	77.33				142.12
		400KV Agra-Gwalior D/C	0.00	0.00	0.00	0.00	0.00	0.00	0.00	0.68				0.68
		400KV Kankroli-Zerda	86.94	14.45	11.31	5.92	46.44	28.02	48.47	88.70				330.25
		400KV Bhinmal-Zerda	68.76	8.67	12.42	8.51	42.83	7.75	8.28	25.52				182.74
*	NR-ER	400KV Barh - Balia D/C	0.00	0.00	0.00	0.00	0.00	0.00	0.00	0.00				0.00
		220/132kV	27.60	26.92	26.92	28.05	28.32	22.51	31.50	30.12				221.95
		400KV Mzp-Gkp D/C	0.00	0.00	0.00	0.00	0.00	0.00	0.00	0.00				0.00
		765 kV Gaya - Fatehpur					0.00	0.00	0.40	0.40				0.80
		HVDC Sasaram B/B (Bypass wef 1 DEC'08)	64.08	22.02	39.74	6.49	14.58	17.91	63.94	6.30				235.06
		400KV Patna-Balia D/C	0.00	0.00	0.00	0.00	0.00	0.00	0.00	0.00				0.00
		400kV Pusauli- Balia				3.69	9.95	21.23	1.66	26.16				62.68
		400KV Biharshariff-Balia D/C	0.00	0.00	0.00	0.00	0.00	0.00	0.00	0.00				0.00
*	NR-Nepal		19.17	11.91	11.91	13.25	10.28	3.52	0.85	11.79				82.68
**	ER-SR	HVDC-Gaz.	157.65	108.00	195.80	349.42	215.55	239.21	296.76	311.19				1873.58
		HVDC-Tal.	1571.43	1605.35	1427.68	1289.96	1070.88	945.53	1368.47	1043.47				10322.77
**	SR-ER	HVDC-Gaz.	1.64	1.16	2.83	0.42	3.51	0.00	0.00	0.00				9.56
***	ER-WR	AC links	188.97	240.24	149.77	61.17	93.46	99.07	303.91	258.07				1394.66
***	WR-ER	AC links	422.66	460.91	649.57	717.30	434.47	285.63	30.62	18.52				3019.68
***	ER-NER	AC links	246.32	231.89	124.78	86.43	105.44	90.27	70.50	215.87				1171.49
***	NER-ER	AC links	0.05	0.07	18.31	23.02	14.05	27.16	23.32	1.28				107.27
**	SR-WR	Chandrapur HVDC	0.00	0.00	0.00	0.00	0.00	0.00	0.00	0.00				0.00
**	WR-SR	Chandrapur HVDC	564.51	542.48	566.08	654.82	676.44	634.54	685.19	538.19				4862.25
	<b>TOTAL</b>		<b>5009</b>	<b>5657</b>	<b>5701</b>	<b>6411</b>	<b>5090</b>	<b>4700</b>	<b>5613</b>	<b>4706</b>	<b>0</b>	<b>0</b>	<b>0</b>	<b>42888</b>
	ER-SR	Tal.-Kol. Interconnector	225.40	246.9	348.7	358.9	257.8	258.1	66.8	143.2				1905.67
	<b>Net IR (Excl. Tal.-II)</b>		<b>3213</b>	<b>3805</b>	<b>3924</b>	<b>4762</b>	<b>3761</b>	<b>3496</b>	<b>4178</b>	<b>3519</b>	<b>0</b>	<b>0</b>	<b>0</b>	<b>30659</b>

\*\* Data is taken from SRLDC

\*\*\* Data is taken from ERLDC # dedicated transmission line of M/s Adani Power Ltd. and not part of ISTS

**STOA (BILATERAL AND COLLECTIVE) & UI BILLING DETAILS- NOVEMBER' 2012**

**BILATERAL SHORT TERM OPEN ACCESS**

Description	Name of RLDC	No. of Transactions	Energy Approved(MU)
NOV'12	NR	355	1198
	WR	229	1264
	SR	151	885
	ER	207	545
	NER	24	51
<b>TOTAL</b>		<b>966</b>	<b>3944</b>

**SHORT TERM OPEN ACCESS**

MONTH	Collective STOA		Bilateral STOA	
	NO. of Buyers/Sellers	Approved Energy (MU)	NO. of Buyers/Sellers	Approved Energy (MU)
APR'12	1676	1337	589	3460
MAY'12	1535	1478	724	3479
JUN'12	1650	1629	797	4155
JULY'12	1938	1572	826	5321
AUG'12	1876	1860	1103	5425
SEP'12	1725	1910	857	4635
OCT'12	2017	2301	918	3315
NOV'12	1988	2186	966	3944
<b>TOTAL</b>	<b>14405</b>	<b>14273</b>	<b>6780</b>	<b>33734</b>

**MONTHLY UI BILLING DETAILS**

provisional data subject to change

(RS. IN CRORES)

REGION	NORTH	WEST	EAST	SOUTH	NORTH EAST
(Upto 29th APR'12)	342	249	161	88	14
(Upto 27th MAY'12)	937	630	363	154	29
(Upto 01st JULY'12)	1,904	1,109	807	238	61
(Upto 29th JULY'12)	3,003	1,673	1,342	315	96
(Upto 26th AUG'12)	3,119	1,778	1,417	364	110
(upto 30th SEP'12)	3,220	1,850	1,485	425	121
( upto 28th OCT'12)	3,323	1,925	1,529	460	132
(upto 25th NOV'12)	3,402	1,979	1,575	504	140

**POWER MARKET INFORMATION**  
**EXCHANGES THROUGH POWER EXCHANGES ( IEX & PXI) - NOV' 2012**

S. No.	Regional Entity	Region	Through Power Exchange in MU	
			Sale	Purchase
1	Punjab	NR	31.43	126.39
2	Haryana	NR	0.00	124.53
3	Rajasthan	NR	11.16	399.41
4	Delhi	NR	478.11	0.14
5	Uttar Pradesh	NR	24.67	241.08
6	Uttarakhand	NR	6.67	32.56
7	Himachal Pradesh	NR	11.80	16.02
8	J & K	NR	21.94	3.84
9	UT Chandigarh	NR	3.39	0.49
10	AD Hydro	NR	0.30	0.00
11	KW	NR	41.42	0.00
12	Shree Cement	NR	18.44	0.00
13	Nathpa Jhakri	NR	0.00	0.00
14	Baira Siul HEP(BS0)	NR	1.47	0.00
15	Chamera-I HEP(CM1)	NR	3.86	0.00
16	Chamera-II HEP(CM2)	NR	4.76	0.00
17	Dhauliganga HEP(DG0)	NR	4.14	0.00
18	Dulahasti HEP(DU0)	NR	9.54	0.00
19	Salal HEP(SL0)	NR	8.75	0.00
20	Sewa-II NHPC(SW2)	NR	0.75	0.00
21	Tanakpur HEP(TP0)	NR	2.69	0.00
22	Uri HEP(UR0)	NR	6.18	0.00
23	LANCO Budhil	NR	1.52	0.00
24	chamera 3	NR	1.06	0.00
25	MP	WR	21.95	98.64
26	Maharashtra	WR	42.49	117.79
27	Gujarat	WR	267.55	419.34
28	Chattisgarh	WR	39.73	2.64
29	Goa	WR	0.00	0.75
30	Daman and Diu	WR	0.00	0.00
31	Dadra & Nagar Haveli	WR	0.00	0.00
32	JD	WR	271.77	0.00
33	LANCO AMK	WR	162.75	0.00
34	ACB India Limited	WR	10.87	0.00
35	Jindal Steel and Power Ltd	WR	47.89	0.00
36	Balco-II	WR	0.24	0.00
37	Sterlite(w3rse0)	WR	26.65	0.00
38	Andhra Pradesh	SR	70.45	188.46
39	Karnataka	SR	373.97	1.72
40	Kerala	SR	0.00	175.66
41	Tamilnadu	SR	0.00	141.82
42	Pondicherry	SR	0.00	0.00
43	Goa	SR	0.00	0.00
44	LANCO_KONDPLY	SR	0.00	0.00
45	SIMHAPURI	SR	0.66	0.00
46	MINAXI	SR	0.00	0.00
47	West Bengal	ER	78.56	48.19
48	Orissa	ER	23.36	0.00
49	Bihar	ER	0.00	0.00
50	Jharkhand	ER	0.00	0.00
51	Sikkim	ER	10.83	0.00
52	DVC	ER	19.97	0.00
53	STERLITE	ER	0.00	0.00
54	Maithon Power Ltd	ER	0.28	0.00
55	Arunachal Pradesh	NER	0.00	6.22
56	Assam	NER	0.02	36.91
57	Manipur	NER	0.00	0.00
58	Meghalaya	NER	0.59	3.51
59	Mizoram	NER	1.31	0.00
60	Nagaland	NER	0.00	0.00
61	Tripura	NER	0.00	0.00
62	Agartala GTPP_AG0	NER	4.64	0.00
63	KOPILI_KP1	NER	0.00	0.00
64	Assam GBPP_KT0	NER	8.05	0.00
65	LOKTAK	NER	7	0
Total			2186	2186

**RENEWABLE CERTIFICATE MECHANISM**  
**MONTH:- NOVEMBER 2012**

RE Source & Unit wise break up (Nov,12)					
Sr.No	Source Wise	Accreditation		Registration	
		Capacity(MW)	Unit	Capacity(MW)	Unit
1	Wind	0	0	0.85	1
2	Urban or Municipal Waste	0	0	0	0
3	Solar PV	0	0	0	0
4	Small Hydro	0	0	5	1
5	Others	0	0	0	0
6	Biomass	2.2	1	0	0
7	Bio-fuel cogeneration	6.3	1	2	1
	<b>Total</b>	<b>8.5</b>	<b>2</b>	<b>7.85</b>	<b>3</b>

RECs Issued (Nov,12)			
Sr.No.	Non Solar	Solar	Total
1	619946	1412	621358

Redemption of REC (Nov,12)			
Sr.No.	Non Solar	Solar	Total
1	132352	1219	133571

RE Source & Unit wise break up (Apr,12 - Nov,12)					
Sr.No	Source Wise	Accreditation		Registration	
		Capacity(MW)	Unit	Capacity(MW)	Unit
1	Wind	788.63	207	811.25	228
2	Urban or Municipal Waste	16	2	0	0
3	Solar PV	2.86	5	18.16	7
4	Small Hydro	7.2	2	10.7	3
5	Others	0	0	0	0
6	Biomass	81.43	11	127.4	16
7	Bio-fuel cogeneration	177.64	21	140.47	21
	<b>Total</b>	<b>1073.76</b>	<b>248</b>	<b>1107.98</b>	<b>275</b>

RECs Issued (Apr,12 - Nov,12)			
Sr.No.	Non Solar	Solar	Total
1	3049151	5549	3054700

Redemption of REC (Apr,12 - Nov,12)			
Sr.No.	Non Solar	Solar	Total
1	1527997	5080	1533077

## **IMPORTANT EVENTS / DISTURBANCES - NOVEMBER 2012**

On 15/11/12, at 1400 hours, 400 KV Wagoora-Kishenpur-II tripped and Wagoora-Kishenpur-I was under shutdown, this resulted in 700 MW load loss in Kashmir valley. Both lines were restored by 1752 hours on same day.

## **IMPORTANT ELEMENTS COMMISSIONED DURING NOVEMBER 2012**

<b>SL. NO</b>	<b>ELEMENT</b>	<b>VOLTAGE (KV)</b>	<b>DATE OF CHARGING</b>
1	In WR,400 kV Gandhar-Navsari charged for 1 <sup>st</sup> time.	400	1322Hrs on 02.11.2012
2	In NR, NTPC Rihand Stage III, Unit-IV of 500 MW synchronised for 1 <sup>st</sup> time.	400	1354Hrs on 13.11.2012
3	In ER, Adhunik Unit-I of 270 MW synchronised for 1 <sup>st</sup> time.	400	1002 Hrs on 13.11.2012
4	In NR,400 kV Navada-Ballabgarh (LILo of G.Noida-Ballabgarh at Navada ) synchronised for 1 <sup>st</sup> time.	400	2120 Hrs on 17.11.2012
5	In SR, 400 kV Gazuwal-Shankerpally charged for 1 <sup>st</sup> time.	400	1325 Hrs on 18.11.2012
6	In NR, 400/220 KV ICT # I & II of 315 MVA charged for first time at 765/400/220 kV Bhiwani (PG) S/S	400	1937 Hrs on 27.11.12
7	In NR,400 kV Merta-Jodhpur-II synchronised for 1 <sup>st</sup> time.	400	0017 Hrs on 29.11.2012
8	In ER, 400 kV Barh-Patna-III (LILo of Barh-Balia-I) synchronised for 1 <sup>st</sup> time.	400	1858 Hrs on 30.11.2012
9	In ER, 400 kV Barh-Patna-IV (LILo of Barh-Balia-II) synchronised for 1 <sup>st</sup> time.	400	1930 Hrs on 30.11.2012
10	In ER,400/132 kV ICT # I of 200 MVA test charged at Banka S/S.	400	1720 Hrs on 31.11.2012
11	In NR, ICT of 400/220 kV, 500 MVA test charged at Jaipur (South) S/S.	400	2309 Hrs on 31.11.2012

## VOLTAGE PROFILE - NOVEMBER 2012

Sl. No.	REGION	SUBSTATION	Maximum(kV)	Minimum(kV)
1	ER	FARAKKA	431	417
2		KAHALGAON	433	416
3		TALCHER	422	405
4		BINAGURI	432	400
5		PURNEA	427	402
6		MUZAFFARPUR	429	402
7		JAMSHEDPUR	435	422
8		RENGALI	420	403
9		JEYPORE	432	380
1	NR	NALLAGARH	432	398
2		BHIWADI	434	405
3		BALLABGARH	436	408
4		ALLAHABAD	434	409
5		HISSAR	422	397
6		BAWANA	434	408
7		KANPUR	425	398
8		BASSI	438	401
9		LUCKNOW PG	432	405
10		MOGA	427	399
11		RATANGARH	425	401
1	WR	ASOJ	422	401
2		ITARSI	425	396
3		JETPUR	421	393
4		KARAD	434	404
5		KASOR	424	409
6		BINA	427	394
7		GWALIOR	428	402
8		RAIPUR	434	418
9		JABALPUR	428	402
10		DHULE	436	394



## VOLTAGE PROFILE - NOVEMBER 2012

Sl. No.	REGION	SUBSTATION	Maximum(kV)	Minimum(kV)
1	SR	SRIPERUMPUDUR	426	394
2		NEYVELI	418	400
3		SALEM	419	391
4		BANGALORE	423	386
5		HOSUR	420	388
6		RAMAGUNDAM	421	406
7		VIJAYAWADA	435	416
8		TIRIVANDRUM	431	399
9		HYDERABAD	437	412
1	NER	MISA	424	393
2		BALIPARA	409	379
3		BONGAIGAON	416	390
4		SALAKATI 220 kV	235	220
5		HAFLONG 132 kV	137	122
6		AIZWAL 132 kV	136	120
7		KUMARGHAT 132 kV	135	125
8		IMPHAL 132 kV	149	132
9		Khlieriat_PG 132 kV	137	123