

# पावर सिस्टम ऑपरेशन कारपोरेशन लिमिटेड

(पावरग्रिड की पूर्ण स्वामित्व प्राप्त सहायक कंपनी)

## POWER SYSTEM OPERATION CORPORATION LIMITED

(A wholly owned subsidiary of POWERGRID)



पंजीकृत एवं केन्द्रीय कार्यालय : बी - 9, कुतुब इंस्टीट्यूशनल एरिया, कटवारिया सराय, नई दिल्ली - 110 016  
Registered & Corporate Office : B - 9, Qutab Institutional Area, Katwaria Sarai, New Delhi - 110 016  
Website : www.nldc.in, www.nldcindia.in, Tel. : 011-26536832, 26524522, Fax : 011-26524525, 26536901

संदर्भ संख्या:- POSOCO/NLDC/GM/596

दिनांक: 23.11.2012

सेवा में,

वितरण सूची के अनुसार

विषय:- निष्पादन रिपोर्ट - अक्टूबर 2012

महोदय,

आई०ई०जी०सी०-2010 के प्रावधान के अनुसार, - अक्टूबर 2012 माह की अखिल भारतीय प्रणाली की निष्पादन रिपोर्ट

धन्यवाद

भवदीय

(अवधेश मणि)

अपर महाप्रबंधक

(रा०भा०प्रे०के०)

संलग्नक: मासिक प्रणाली रिपोर्ट

## Distribution List

1. Secretary ,CERC, 3<sup>rd</sup> & 4<sup>th</sup> Floor , Chanderlok Building,36,Janpath,New Delhi-110001
2. Chief Engineer(GM),CEA,Sewa Bhavan, R.K.Puram , New Delhi-110066
3. Member Secretary ,NRPC,18/A,SJSS Marg, Katwaria Sarai,New Delhi-110016
- 4.Member Secretary ,WRPC,F-3,MIDC Area,Andheri (East),Mumbai-400093
- 5.Member Secretary,SRPC,29,Race Course Cross Road,Bangalore-560009
6. Member Secretary,ERPC,14,Golf Club Road , Kolkata-7000033
7. Member Secretary,NERPC,Meghalaya State Housing Finance Cooperative Society Ltd.  
Building,Nongrim Hills , Shillong -793003
8. General Manager , ERLDC,14, Golf Club Road , Kolkata-7000033
9. General Manager, WRLDC,F-3,MIDC Area,Andheri (East),Mumbai-400093
- 10.General Manager, NRLDC,18/A,SJSS Marg, Katwaria Sarai,New Delhi-110016
11. General Manager , SRLDC, 29,Race Course Cross Road,Bangalore-560009
12. AGM,NERLDC,Dongtiah,Lower Nongrah,Laplang,Shillong-793006

POWER SYSTEM OPERATION CORPORATION LTD  
NATIONAL LOAD DESPATCH CENTRE



OPERATIONAL PERFORMANCE REPORT FOR THE  
MONTH OF OCTOBER 2012

## CONTENTS

1. SUMMARY OF REPORT FOR THE MONTH OF OCTOBER 2012
2. REGION WISE INSTALLED CAPACITY
3. PEAK DEMAND MET AT NATIONAL LEVEL
4. ENERGY CONSUMPTION AT NATIONAL LEVEL
5. FREQUENCY PROFILE
6. HYDRO GENERATION AT NATIONAL LEVEL
7. WIND GENERATION AT NATIONAL LEVEL
8. PEAK DEMAND & ENERGY MET AT REGIONAL LEVEL
9. SCHEDULE & DRAWAL AT REGIONAL LEVEL
10. INTER-REGIONAL EXCHANGES
11. BILATERAL SHORT-TERM OPEN ACCESS & UI DETAILS
12. POWER MARKET INFORMATION
13. RENEWABLE ENERGY CERTIFICATE MECHANISM
14. IMPORTANT EVENTS/DISTURBANCES
15. IMPORTANT ELEMENTS COMMISSIONED
16. VOLTAGE PROFILE

## **SUMMARY OF REPORT FOR THE MONTH OF OCTOBER 2012**

- During the month of October 2012, the overall system was running normal to the large extent. The maximum of all India peak demand met was 117236MW (on 18-10-2012) which is 5.9% more as compared to last year October month demand (110614MW) and 0.09% more as compared to September 2012 demand (117120MW).
- For 90.39% of time the NEW grid frequency was in the IEGC band (49.7 – 50.2 Hz) against 83.73 % ( 01 Sep to 16 Sep 2012, IEGC band 49.5 – 50.2 Hz) and 84.09% (17 Sep to 30 Sep 2012, IEGC band 49.7 – 50.2 Hz) of the time in the last month (September 2012). For SR Grid, the frequency remained within the IEGC band for 89.38 % of the time against 95.88 % ( 01 Sep to 16 Sep 2012, IEGC band 49.5 – 50.2 Hz) and 81.43% (17 Sep to 30 Sep 2012, IEGC band 49.7 – 50.2 Hz) of the time in the last month (September 2012).
- All India energy consumption was 77819 MU at the average of 2510MU/day which is 1.33% more than that of last month (September 2012) average energy consumption (74319MUs, Average 2477 MU/day) and 6.69% more than the last year October month average energy consumption (72934MU, Average 2352 MU/day).
- There was around 21.2% decrement in average all India Hydro generation compared to last year & 38.14% decrement compared to last month.
- Regarding wind generation, there was around 63.54% decrement in average all India wind generation compared to last month. October 2012 average wind generation was 35 MU/day against 97 MU/day in September 2012.

**6. ALL INDIA REGIONWISE GENERATING INSTALLED CAPACITY (MW) OF POWER UTILITIES INCLUDING ALLOCATED SHARES IN JOINT AND CENTRAL SECTOR UTILITIES**

(As on 31-10-12)

SL. NO.	REGION	THERMAL				Nuclear	HYDRO (Renewable)	R.E.S.@ (MNRE)	TOTAL
		COAL	GAS	DSL	TOTAL				
1	Northern	30823.50	4671.26	12.99	35507.75	1620.00	15423.75	4437.65	56989.15
2	Western	43099.50	8254.81	17.48	51371.79	1840.00	7447.50	8146.69	68805.98
3	Southern	23782.50	4962.78	939.32	29684.60	1320.00	11338.03	11769.32	54111.95
4	Eastern	22337.88	190.00	17.20	22545.08	0.00	3882.12	410.71	26837.91
5	N. Eastern	60.00	824.20	142.74	1026.94	0.00	1200.00	228.00	2454.94
6	Islands	0.00	0.00	70.02	70.02	0.00	0.00	6.10	76.12
<b>7</b>	<b>All India</b>	<b>120103.38</b>	<b>18903.05</b>	<b>1199.75</b>	<b>140206.18</b>	<b>4780.00</b>	<b>39291.40</b>	<b>24998.46</b>	<b>209276.04</b>

Captive Generation Capacity in Industries having demand of 1 MW or above, Grid interactive(as on 31-03-2011)=34444.12 MW

**IMPORTANT EVENTS / DISTURBANCES - OCTOBER 2012**

**NIL**

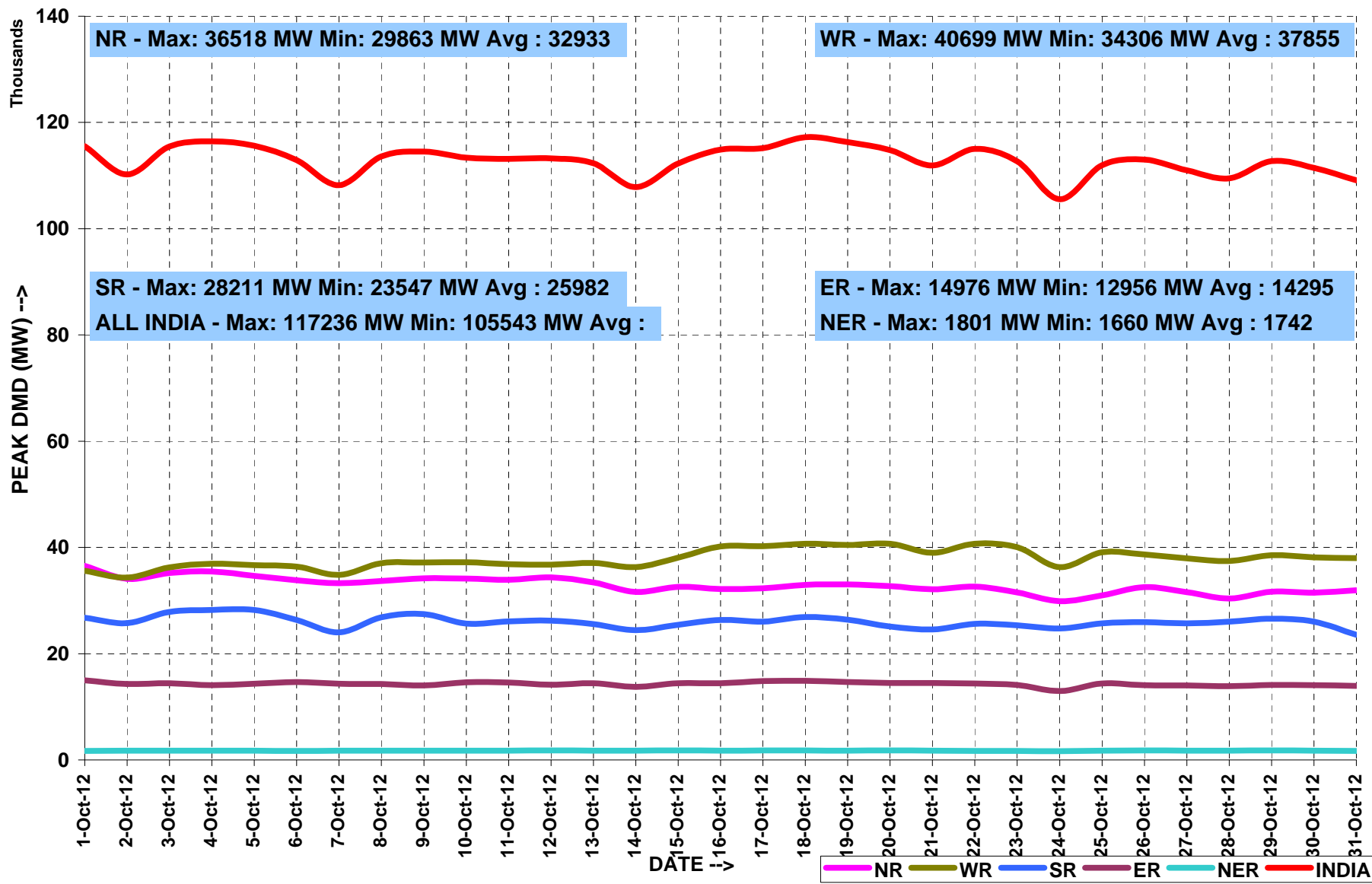
## PEAK DEMAND MET AT NATIONAL LEVEL

MONTH:- OCTOBER 2012

All figures in MW

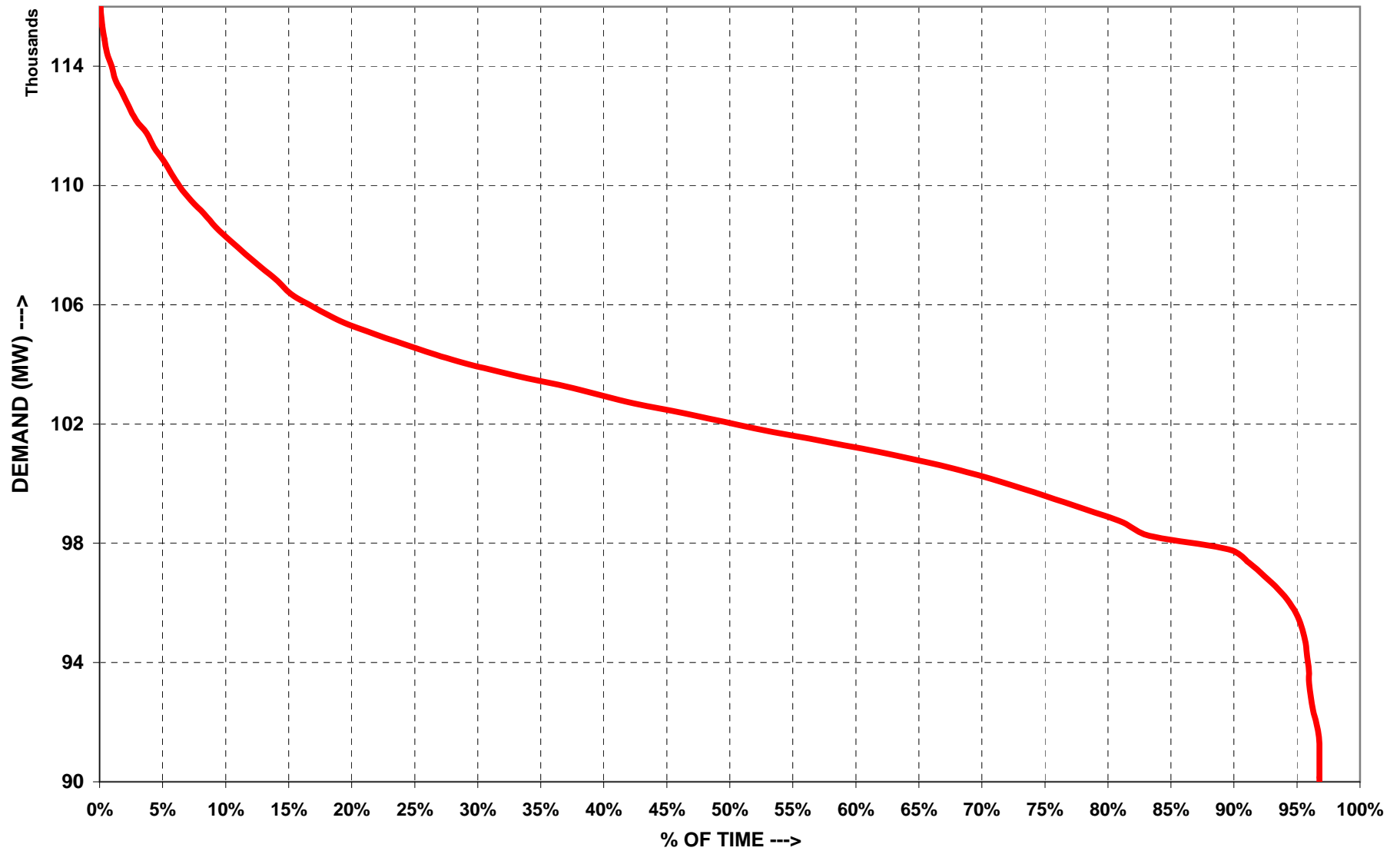
Date	NR	WR	SR	ER	NER	TOTAL
10/1/2012	36518	35586	26747	14976	1695	115522
10/2/2012	34095	34306	25755	14317	1756	110229
10/3/2012	35215	36265	27874	14417	1727	115498
10/4/2012	35490	36952	28207	14060	1748	116457
10/5/2012	34660	36672	28211	14358	1728	115629
10/6/2012	33827	36375	26340	14672	1682	112896
10/7/2012	33291	34823	24001	14327	1733	108175
10/8/2012	33701	37031	26846	14280	1760	113618
10/9/2012	34171	37162	27429	14001	1749	114512
10/10/2012	34156	37204	25655	14620	1729	113364
10/11/2012	33916	36834	26095	14569	1733	113147
10/12/2012	34358	36733	26202	14163	1784	113240
10/13/2012	33429	37072	25594	14451	1761	112307
10/14/2012	31629	36297	24432	13728	1757	107843
10/15/2012	32568	38079	25412	14444	1779	112282
10/16/2012	32184	40195	26328	14448	1742	114897
10/17/2012	32290	40219	26019	14849	1772	115149
10/18/2012	32963	40693	26919	14877	1784	117236
10/19/2012	33034	40475	26390	14644	1751	116294
10/20/2012	32719	40699	25104	14497	1793	114812
10/21/2012	32135	38983	24573	14462	1742	111895
10/22/2012	32611	40693	25631	14408	1704	115047
10/23/2012	31533	40057	25320	14111	1679	112700
10/24/2012	29863	36303	24761	12956	1660	105543
10/25/2012	30980	39087	25726	14406	1752	111951
10/26/2012	32515	38698	25923	14084	1775	112995
10/27/2012	31575	37943	25731	14007	1723	110979
10/28/2012	30367	37431	26045	13885	1757	109485
10/29/2012	31677	38548	26597	14127	1801	112750
10/30/2012	31493	38107	26021	14091	1728	111440
10/31/2012	31957	37980	23547	13911	1706	109101
MAXIMUM	36518	40699	28211	14976	1801	117236
MINIMUM	29863	34306	23547	12956	1660	105543
AVERAGE	32933	37855	25982	14295	1742	112806

## PEAK DEMANDS MET DURING THE MONTH OF OCTOBER' 2012





# ALL INDIA LOAD DURATION CURVE FOR OCTOBER' 2012



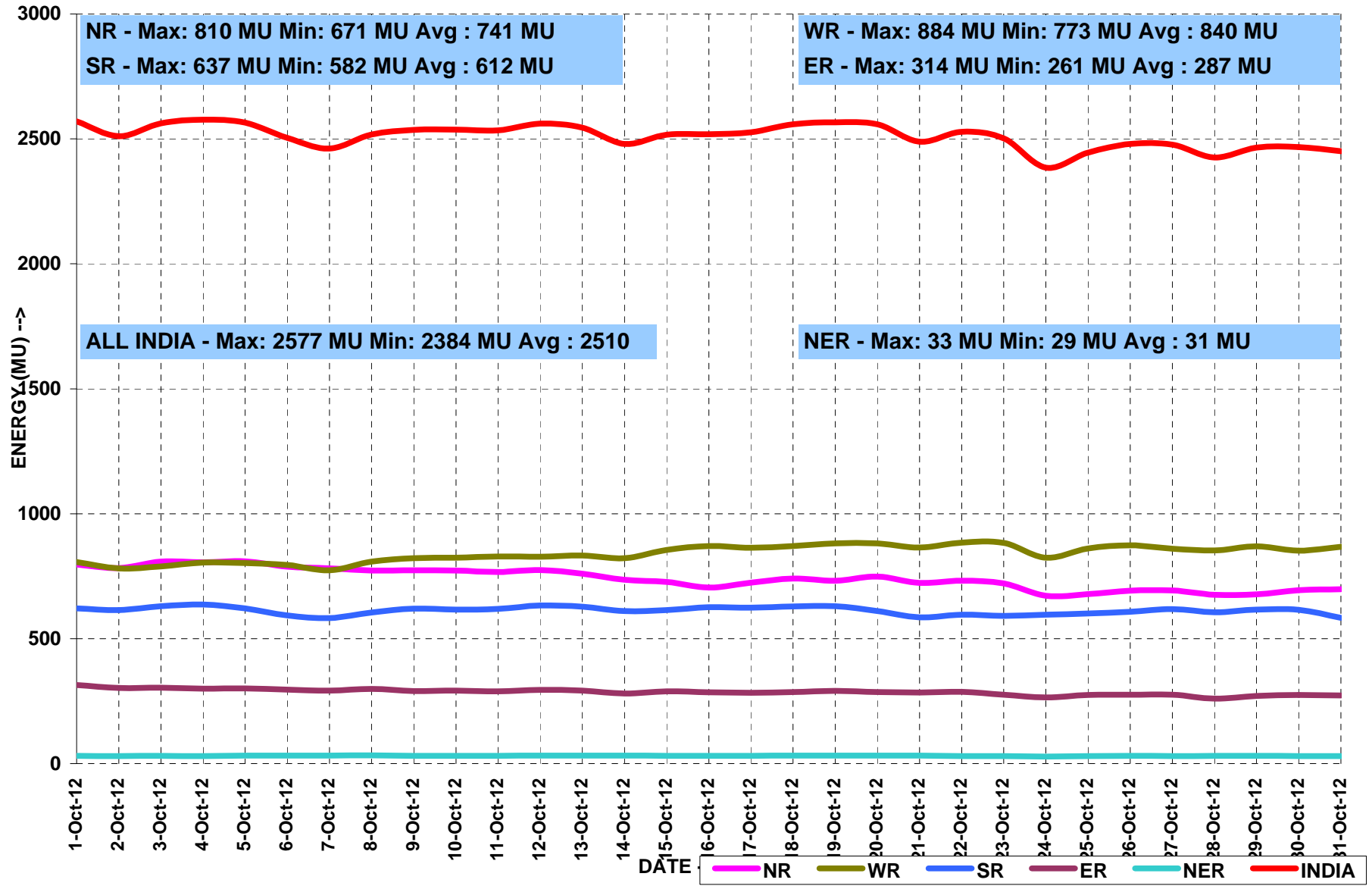
## ENERGY MET AT NATIONAL LEVEL

MONTH:- OCTOBER 2012

All figures in MU

Date	NR	WR	SR	ER	NER	TOTAL
10/1/2012	797	807	621	314	31	2570
10/2/2012	782	781	614	303	30	2511
10/3/2012	809	789	630	304	31	2563
10/4/2012	806	804	637	300	30	2577
10/5/2012	810	802	621	301	32	2565
10/6/2012	788	795	593	296	32	2504
10/7/2012	781	773	582	292	32	2461
10/8/2012	773	809	605	299	33	2518
10/9/2012	773	822	620	290	31	2537
10/10/2012	773	824	616	292	31	2537
10/11/2012	767	828	619	289	31	2534
10/12/2012	774	828	633	295	32	2562
10/13/2012	760	833	628	293	32	2545
10/14/2012	736	822	610	281	32	2480
10/15/2012	727	855	614	289	31	2517
10/16/2012	705	871	626	285	31	2519
10/17/2012	724	864	624	284	31	2526
10/18/2012	741	871	629	286	32	2558
10/19/2012	732	882	630	291	32	2566
10/20/2012	748	882	610	286	32	2558
10/21/2012	723	865	585	284	32	2489
10/22/2012	732	884	596	287	30	2528
10/23/2012	722	884	591	276	30	2502
10/24/2012	671	824	596	265	29	2384
10/25/2012	679	861	601	275	30	2445
10/26/2012	692	874	608	276	31	2480
10/27/2012	693	860	618	276	30	2477
10/28/2012	675	854	606	261	31	2426
10/29/2012	678	870	616	271	31	2465
10/30/2012	694	853	615	275	30	2467
10/31/2012	698	867	583	272	30	2450
<b>TOTAL</b>	<b>22960</b>	<b>26034</b>	<b>18977</b>	<b>8885</b>	<b>964</b>	<b>77819</b>
<b>MAXIMUM</b>	<b>810</b>	<b>884</b>	<b>637</b>	<b>314</b>	<b>33</b>	<b>2577</b>
<b>MINIMUM</b>	<b>671</b>	<b>773</b>	<b>582</b>	<b>261</b>	<b>29</b>	<b>2384</b>
<b>AVERAGE</b>	<b>741</b>	<b>840</b>	<b>612</b>	<b>287</b>	<b>31</b>	<b>2510</b>

## ENERGY MET DURING THE MONTH OF OCTOBER' 2012

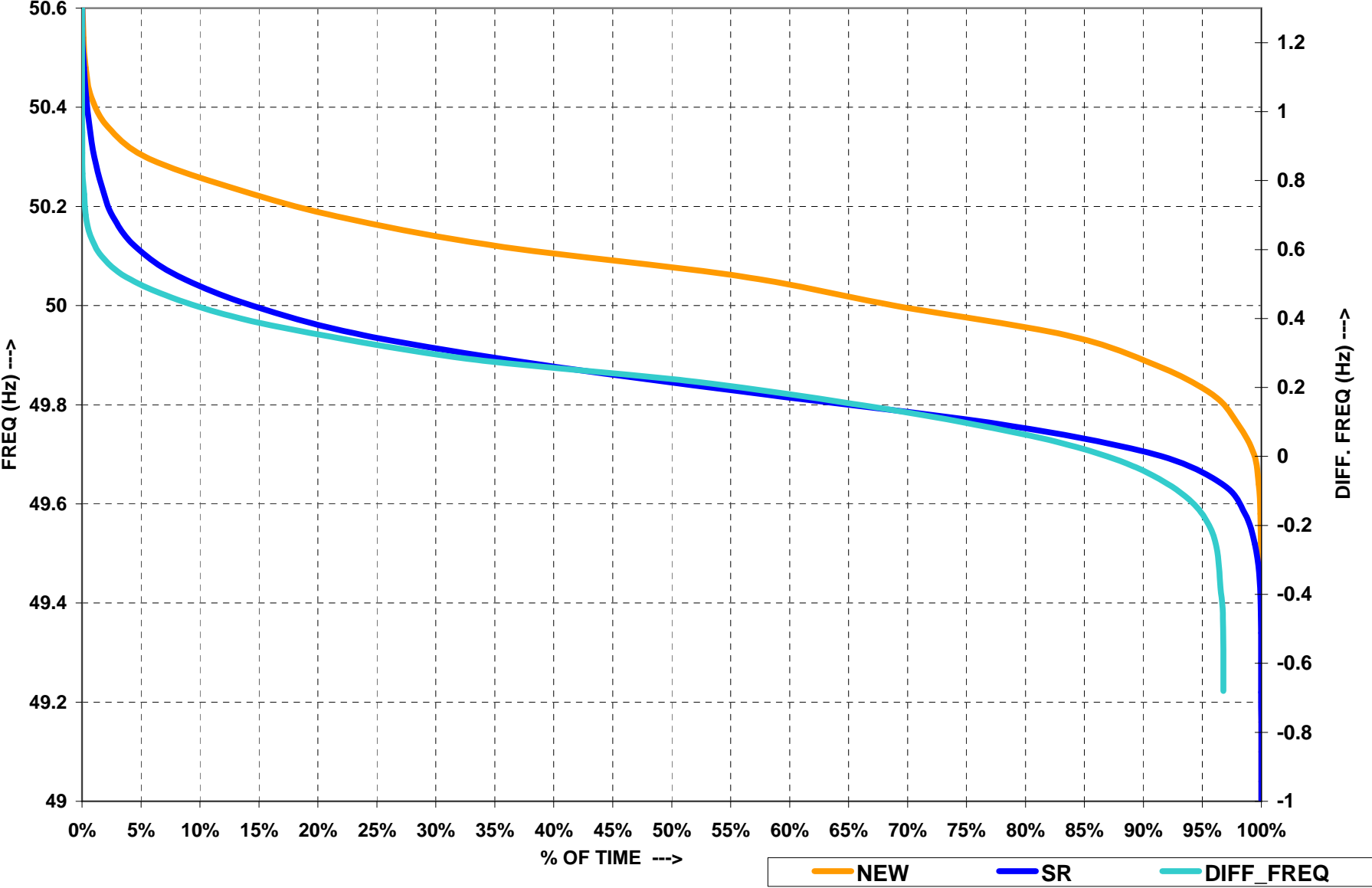


**FREQUENCY PROFILE FOR THE MONTH OF OCTOBER 2012**

<b>SR GRID</b>										
<b>FREQUENCY PROFILE</b>		<b>&lt; 48.5</b>	<b>48.5 - 49.5</b>	<b>&lt; 49.5</b>	<b>49.5 - 50.2</b>	<b>&gt;50.2</b>		<b>Max. Freq</b>	<b>Min. Freq</b>	<b>Avg. Freq</b>
<b>% TIME</b>	Apr-12	0.00	7.79	7.79	91.28	0.93		50.66	48.66	49.69
	May-12	0.00	5.61	5.61	94.01	0.38		50.63	48.81	49.7
	Jun-12	0.00	7.83	7.83	91.03	1.14		50.79	48.86	49.68
	Jul-12	0.00	0.00	6.95	92.18	0.87		50.61	48.81	49.69
	Aug-12	0.00	3.17	3.17	95.57	1.26		50.55	48.86	49.75
	Sep-12 (till 16 sep)	0.00	1.68	1.68	95.88	2.44		50.58	49.12	49.81
<b>FREQUENCY PROFILE</b>		<b>&lt;49.0</b>	<b>49.0-49.7</b>	<b>&lt;49.7</b>	<b>49.7-50.2</b>	<b>&gt;50.2</b>		<b>Max. Freq</b>	<b>Min. Freq</b>	<b>Avg. Freq</b>
<b>% TIME</b>	Sep-12 (17 Sep onwards)	0.00	0.00	18.37	81.43	0.2		50.51	49.12	49.79
	Oct-12	0.00	8.26	8.26	89.38	2.36		50.73	49.19	49.86

<b>NEW GRID</b>										
<b>FREQUENCY PROFILE</b>		<b>&lt; 48.5</b>	<b>48.5 - 49.5</b>	<b>&lt; 49.5</b>	<b>49.5 - 50.2</b>	<b>&gt;50.2</b>		<b>Max. Freq</b>	<b>Min. Freq</b>	<b>Avg. Freq</b>
<b>% TIME</b>	Apr-12	0.00	2.38	2.38	93.68	3.94		50.66	49.08	49.9
	May-12	0.00	10.82	10.82	87.82	1.36		50.75	48.82	49.8
	Jun-12	0.00	19.95	19.95	78.66	1.39		50.68	48.75	49.7
	Jul-12	0.00	24.38	24.38	73.59	2.03		51.21	49.79	49.68
	Aug-12	0.00	1.57	1.57	89.72	8.71		50.65	48.82	49.95
	Sep-12 (till 16 sep)	0.00	0.60	0.60	83.73	15.67		50.65	48.96	50.02
<b>FREQUENCY PROFILE</b>		<b>&lt;49.0</b>	<b>49.0-49.7</b>	<b>&lt;49.7</b>	<b>49.7-50.2</b>	<b>&gt;50.2</b>		<b>Max. Freq</b>	<b>Min. Freq</b>	<b>Avg. Freq</b>
<b>% TIME</b>	Sep-12 (17 Sep onwards)	0.00	3.22	3.22	84.09	12.69		50.65	48.96	50.03
	Oct-12	0.00	3.33	3.33	90.39	6.28		50.61	49.37	49.98

# FREQUENCY DURATION CURVES FOR OCTOBER' 2012



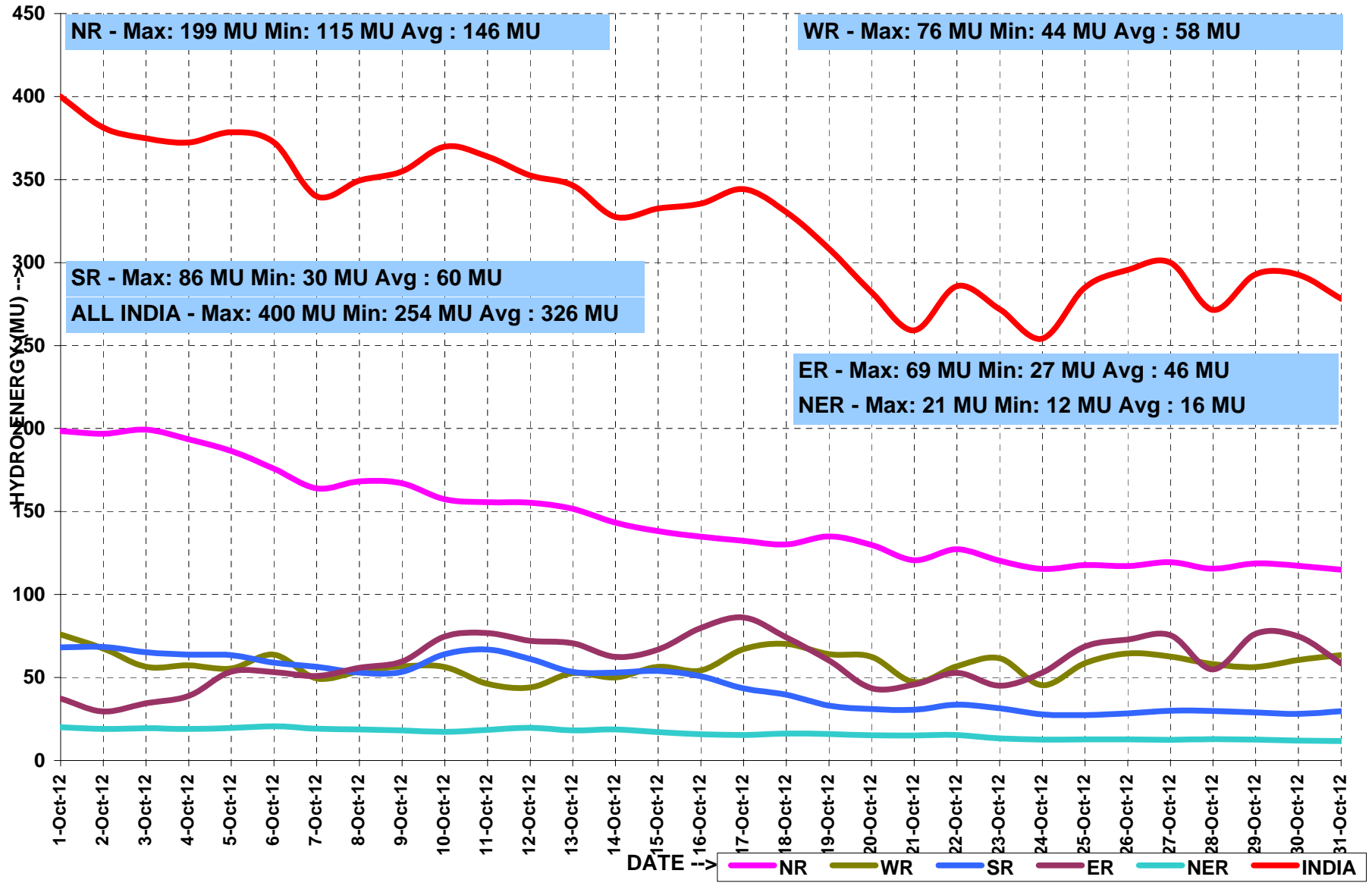
## HYDRO GENERATION AT NATIONAL LEVEL

MONTH:- OCTOBER 2012

All figures in MU

Date	NR	WR	SR	ER	NER	TOTAL
10/1/2012	199	76	37	68	20	400
10/2/2012	197	67	30	69	19	381
10/3/2012	199	56	35	65	19	375
10/4/2012	194	57	39	64	19	372
10/5/2012	187	55	54	64	20	379
10/6/2012	176	64	53	59	21	372
10/7/2012	164	49	51	57	19	340
10/8/2012	168	54	56	53	19	349
10/9/2012	167	57	60	53	18	355
10/10/2012	157	56	75	64	17	370
10/11/2012	156	46	77	67	18	364
10/12/2012	155	44	72	61	20	352
10/13/2012	152	53	71	53	18	347
10/14/2012	143	50	63	53	19	327
10/15/2012	138	57	67	54	17	333
10/16/2012	135	54	80	51	16	336
10/17/2012	132	67	86	44	15	344
10/18/2012	130	70	74	40	16	330
10/19/2012	135	64	60	33	16	308
10/20/2012	130	63	44	31	15	282
10/21/2012	121	47	46	31	15	259
10/22/2012	127	57	53	34	15	286
10/23/2012	120	62	45	32	13	272
10/24/2012	115	45	53	28	13	254
10/25/2012	118	59	69	27	13	285
10/26/2012	117	65	73	28	13	296
10/27/2012	120	63	76	30	12	300
10/28/2012	116	58	55	30	13	271
10/29/2012	119	56	76	29	13	293
10/30/2012	117	61	75	28	12	293
10/31/2012	115	63	59	30	12	278
<b>TOTAL</b>	<b>4518</b>	<b>1795</b>	<b>1859</b>	<b>1427</b>	<b>505</b>	<b>10103</b>
<b>MAXIMUM</b>	<b>199</b>	<b>76</b>	<b>86</b>	<b>69</b>	<b>21</b>	<b>400</b>
<b>MINIMUM</b>	<b>115</b>	<b>44</b>	<b>30</b>	<b>27</b>	<b>12</b>	<b>254</b>
<b>AVERAGE</b>	<b>146</b>	<b>58</b>	<b>60</b>	<b>46</b>	<b>16</b>	<b>326</b>

## HYDRO ENERGY DURING THE MONTH OF OCTOBER' 2012



## WIND GENERATION AT NATIONAL LEVEL

MONTH:- OCTOBER 2012

All figures in MU

Date	NR	WR	SR	ER	NER	TOTAL
10/1/2012	1.0	13.3	61.8	...	...	76.1
10/2/2012	0.4	11.4	71.4	...	...	83.2
10/3/2012	1.5	13.5	71.4	...	...	86.4
10/4/2012	2.7	11.4	64.5	...	...	78.6
10/5/2012	5.2	7.0	38.3	...	...	50.5
10/6/2012	6.0	5.2	25.0	...	...	36.2
10/7/2012	2.0	6.9	17.0	...	...	25.9
10/8/2012	0.8	8.1	9.0	...	...	17.9
10/9/2012	0.7	6.1	11.8	...	...	18.6
10/10/2012	0.4	5.7	8.8	...	...	14.9
10/11/2012	1.3	8.7	8.9	...	...	18.9
10/12/2012	11.5	6.9	6.0	...	...	24.4
10/13/2012	5.6	6.2	4.7	...	...	16.5
10/14/2012	2.6	3.8	8.3	...	...	14.7
10/15/2012	7.3	6.8	6.5	...	...	20.6
10/16/2012	1.7	6.9	8.8	...	...	17.4
10/17/2012	1.6	8.0	10.2	...	...	19.8
10/18/2012	2.7	10.3	18.9	...	...	31.9
10/19/2012	2.6	10.8	17.1	...	...	30.5
10/20/2012	5.9	12.9	18.9	...	...	37.7
10/21/2012	3.5	14.8	21.2	...	...	39.5
10/22/2012	2.7	17.2	19.3	...	...	39.2
10/23/2012	3.7	12.8	17.5	...	...	34.0
10/24/2012	1.9	8.8	16.5	...	...	27.2
10/25/2012	0.8	4.4	9.3	...	...	14.5
10/26/2012	1.2	6.0	10.5	...	...	17.7
10/27/2012	1.3	15.3	21.8	...	...	38.4
10/28/2012	0.7	16.2	29.1	...	...	46.0
10/29/2012	0.6	14.3	12.5	...	...	27.4
10/30/2012	0.7	17.0	12.3	...	...	30.0
10/31/2012	0.8	20.0	18.9	...	...	39.7
<b>TOTAL</b>	<b>81</b>	<b>317</b>	<b>676</b>	<b>...</b>	<b>...</b>	<b>1074</b>
<b>MAXIMUM</b>	<b>12</b>	<b>20</b>	<b>71</b>	<b>...</b>	<b>...</b>	<b>86</b>
<b>MINIMUM</b>	<b>0</b>	<b>4</b>	<b>5</b>	<b>...</b>	<b>...</b>	<b>15</b>
<b>AVERAGE</b>	<b>3</b>	<b>10</b>	<b>22</b>	<b>...</b>	<b>...</b>	<b>35</b>



## ACTUAL POWER SUPPLY POSITION - OCTOBER 2012

REGION	STATE	Requirement/Availability in MU/DAY			Requirement/Availability in MU				Peak Demand/Peak Met in MW			
		Requirement	Energy met	Surplus(+)/ Deficit(-)	Requirement	Energy met	Surplus(+)/ Deficit(-)	% Shortage	Requirement	Peak Demand	Surplus(+)/ Deficit(-)	% Shortage
NR	Chandigarh	4	4	0	117	117	0	0	242	242	0	0
	Delhi	68	68	0	2099	2097	-1	0	3995	3995	0	0
	Haryana	114	110	-4	3537	3401	-132	4	6429	5989	-440	-7
	H.P.	23	23	0	714	704	-9	1	1298	1298	0	0
	J&K	42	31	-10	1288	966	-312	25	2248	1686	-562	-25
	Punjab	119	114	-5	3679	3536	-138	4	8441	6860	-1581	-19
	Rajasthan	158	155	-3	4913	4809	-101	2	7454	7430	-24	0
	U.P.	257	207	-49	7956	6424	-1483	19	11883	10471	-1412	-12
	Uttarakhand	30	28	-2	926	874	-51	6	1672	1592	-80	-5
	NFF/Railway	2	2	0	73	73	0	0	108	108	0	0
	<b>TOTAL</b>	<b>816</b>	<b>742</b>	<b>-74</b>	<b>25302</b>	<b>23002</b>	<b>-2226</b>	<b>9</b>	<b>40856</b>	<b>36518</b>	<b>-4338</b>	<b>-11</b>
WR	Gujarat	266	266	0	8255	8244	-11	0	12387	12348	-39	0
	Madhya Pradesh	153	141	-12	4731	4358	-373	-8	9130	9013	-117	-1
	Chhattisgarh	64	64	0	1994	1982	-12	-1	3457	3320	-137	-4
	Maharashtra	351	342	-9	10894	10600	-294	-3	18437	17268	-1169	-6
	Goa	8	7	0	236	231	-5	-2	473	418	-55	-12
	D&D	6	6	0	185	171	-13	-7	276	247	-29	-11
	DNH	13	13	0	415	415	0	0	586	579	-7	-1
	<b>TOTAL</b>	<b>862</b>	<b>839</b>	<b>-23</b>	<b>26709</b>	<b>26000</b>	<b>-708</b>	<b>-3</b>	<b>41478</b>	<b>40890</b>	<b>-588</b>	<b>-1</b>
SR	AP-TRANSCO	277	225	-52	8592	6965	-1627	-19	12657	10901	-1756	-14
	KPTCL	170	148	-22	5278	4596	-682	-13	8772	7601	-1171	-13
	KSEB	57	54	-3	1763	1671	-92	-5	3389	3037	-352	-10
	TNEB	233	180	-53	7226	5568	-1658	-23	12753	10477	-2276	-18
	PONDY	6	6	0	178	175	-3	-2	317	315	-2	-1
		<b>TOTAL</b>	<b>743</b>	<b>612</b>	<b>-131</b>	<b>23037</b>	<b>18974</b>	<b>-4063</b>	<b>-18</b>	<b>36372</b>	<b>29971</b>	<b>-6401</b>
ER	Bihar	41	32	-9	1280	981	-299	-23	2500	1684	-816	-33
	JSEB	20	18	-2	630	569	-61	-10	1155	1058	-97	-8
	GRIDCO	51	55	4	1570	1695	125	8	2530	2575	45	2
	DVC	70	64	-6	2170	1973	-197	-9	3600	3435	-165	-5
	West Bengal	125	123	-2	3863	3805	-58	-2	6909	7104	195	3
	<b>TOTAL</b>	<b>307</b>	<b>291</b>	<b>-16</b>	<b>9513</b>	<b>9023</b>	<b>-490</b>	<b>-5</b>	<b>16309</b>	<b>14878</b>	<b>-1431</b>	<b>-9</b>
NER	Arunachal Pradesh	2	2	0	51	47	-4	-0.1	105	101	-4	-4
	Assam	19	18	-1	584	564	-20	0.0	1124	1098	-26	-2
	Manipur	2	2	0	55	52	-3	-0.1	117	110	-7	-6
	MeSEB	5	4	-1	154	131	-23	-0.2	263	264	1	0
	Mizoram	1	1	0	35	32	-3	-0.1	68	65	-3	-4
	Nagaland	2	2	0	50	47	-3	-0.1	110	109	-1	-1
	Tripura	3	3	0	101	96	-5	0	229	228	-1	0
	<b>TOTAL</b>	<b>33</b>	<b>31</b>	<b>-2</b>	<b>1029</b>	<b>969</b>	<b>-60</b>	<b>0</b>	<b>2015</b>	<b>1975</b>	<b>-39</b>	<b>-2</b>

**SCHEDULE AND DRAWAL OF CONSTITUENTS - OCTOBER 2012**

REGION	STATE	SCHEDULE (MU)	ACTUAL DRAWAL (MU)	Over draw(+)/ Under Drawal(-) (MU)	SCHEDULE (MU/DAY)	ACTUAL DRAWAL (MU/DAY)	Over draw(+)/ Under Drawal(-) (MU/DAY)
NR	Chandigarh	126	122	-5	4	4	0
	Delhi	1321	1218	-103	43	39	-3
	Haryana	1685	1625	-60	54	52	-2
	H.P.	353	381	28	11	12	1
	J&K	624	661	38	20	21	1
	Punjab	1630	1643	13	53	53	0
	Rajasthan	1866	1903	37	60	61	1
	U.P.	2916	2870	-46	94	93	-1
	Uttarakhand	409	481	72	13	16	2
	NFF/Railway	69	73	4	2	2	0
WR	Gujarat	1430	1379	-51	46	44	-2
	Madhya Pradesh	2173	2201	28	70	71	1
	Maharashtra	3573	3600	27	115	116	1
	Chhattisgarh	399	378	-21	13	12	-1
	Goa	207	217	11	7	7	0
	D&D	179	171	-8	6	6	0
	D&NH	425	415	-11	14	13	0
SR	APTRANSCO	2102	2173	71	68	70	2
	KPTCL	883	900	17	28	29	1
	KSEB	1026	1091	65	33	35	2
	TNEB	1608	1634	26	52	53	1
	PONDY	204	175	-29	7	6	-1
	GOA(SR)	52	51	-1	2	2	0
ER	Bihar	1000	1019	19	32	33	1
	JSEB	265	241	-24	9	8	-1
	DVC	-766	-731	35	-25	-24	1
	GRIDCO	325	339	14	10	11	0
	Sikkim	585	590	5	19	19	0
	WBSEB	35	28	-6	1	1	0
NER	Arunachal Pradesh	53	51	-2	2	2	0
	Assam	371	356	-15	12	11	0
	Manipur	65	53	-12	2	2	0
	MeSEB	43	41	-2	1	1	0
	Mizoram	31	30	-1	1	1	0
	Nagaland	42	40	-2	1	1	0
	Tripura	31	19	-12	1	1	0

## Inter-Regional Exchanges (2012-2013)

All figs. in MUs  
ALL FIGURES ARE IN MUS

		Apr-12	May-12	Jun-12	Jul-12	Aug-12	Sep-12	Oct-12	Nov-12	Dec-12	Jan-13	Feb-13	Mar-13	Total FINANCIAL YEAR 2012-13 (Till June'12)
*	WR-NR	HVDC Vindhyachal B/B	22.31	146.15	203.64	198.81	212.96	102.09	131.08					1017.03
		HVDC Mundra-M'garh#				221.62	328.28	373.97	491.33					1415.20
		220KV Aur.-Mal.	0.33	0.00	1.51	9.17	0.00	1.18	0.00					12.18
		220KV Kota/Morak-Badod	6.94	40.25	11.71	42.95	16.11	22.89	6.25					147.10
		400KV Agra-Gwalior	460.85	610.16	697.97	712.15	378.55	362.60	311.59					3533.88
		400KV Kankroli-Jerda	4.20	20.06	72.81	66.97	0.99	10.67	4.49					180.19
		400KV Bhinmal-Jerda	3.30	40.92	72.65	94.51	4.58	29.07	31.31					276.34
*	ER-NR	400KV Barh - Balia	114.24	214.97	175.75	122.11	46.34	61.71	282.67					1017.79
		HVDC Sasaram B/B (Bypass wef 1 DEC'08)	22.34	63.33	58.57	180.46	101.20	127.47	33.20					586.57
		765 kV Gaya - Fatehpur					82.99	66.01	101.65					250.65
		400KV Mzp-Gkp	309.11	484.33	447.30	670.69	499.81	481.15	536.30					3428.68
		220/132kV	105.31	98.91	105.40	98.24	101.12	109.94	106.68					725.59
		400KV Patna-Balia	224.55	320.90	299.47	370.14	256.53	253.89	209.32					1934.79
		400kV Pusauli- Balia	0.00	0.00	7.54	13.48	6.48	9.36	30.89					67.75
		400KV Biharshariff-Balia	208.57	293.31	274.10	330.85	231.34	198.45	241.50					1778.13
*	NR-WR	HVDC Vindhyachal B/B	70.00	17.02	16.83	19.77	6.86	26.18	55.01					211.68
		220KV Aur.-Mal.	30.53	32.46	17.41	10.57	35.00	36.63	69.13					231.73
		220KV Kota/Morak-Badod	7.12	0.67	0.80	0.00	14.83	4.28	37.09					64.79
		400KV Agra-Gwalior	0.00	0.00	0.00	0.00	0.00	0.00	0.00					0.00
		400KV Kankroli-Jerda	86.94	14.45	11.31	5.92	46.44	28.02	48.47					241.55
		400KV Bhinmal-Jerda	68.76	8.67	12.42	8.51	42.83	7.75	8.28					157.22
*	NR-ER	400KV Barh - Balia	0.00	0.00	0.00	0.00	0.00	0.00	0.00					0.00
		220/132kV	27.60	26.92	26.92	28.05	28.32	22.51	31.50					191.83
		400KV Mzp-Gkp	0.00	0.00	0.00	0.00	0.00	0.00	0.00					0.00
		765 kV Gaya - Fatehpur					0.00	0.00	0.40					0.40
		HVDC Sasaram B/B (Bypass wef 1 DEC'08)	64.08	22.02	39.74	6.49	14.58	17.91	63.94					228.76
		400KV Patna-Balia	0.00	0.00	0.00	0.00	0.00	0.00	0.00					0.00
		400kV Pusauli- Balia				3.69	9.95	21.23	1.66					36.53
		400KV Biharshariff-Balia	0.00	0.00	0.00	0.00	0.00	0.00	0.00					0.00
*	NR-Nepal		19.17	11.91	11.91	13.25	10.28	3.52	0.85					70.89
**	ER-SR	HVDC-Gaz.	157.65	108.00	195.80	349.42	215.55	239.21	296.76					1562.39
		HVDC-Tal.	1571.43	1605.35	1427.68	1289.96	1070.88	945.53	1368.47					9279.30
**	SR-ER	HVDC-Gaz.	1.64	1.16	2.83	0.42	3.51	0.00	0.00					9.56
***	ER-WR	AC links	115.00	206.00	102.00	0.00	35.00	41.00	273.00					772.00
***	WR-ER	AC links	349.00	426.00	601.00	656.00	376.00	227.00	0.00					2635.00
***	ER-NER	AC links	246.00	232.00	106.00	70.00	91.00	70.10	47.00					862.10
***	NER-ER	AC links	0.00	0.00	0.00	7.00	0.00	7.00	0.00					14.00
**	SR-WR	Chandrapur HVDC	0.00	0.00	0.00	0.00	0.00	0.00	0.00					0.00
**	WR-SR	Chandrapur HVDC	564.51	542.48	566.08	654.82	676.44	634.54	685.19					4324.06
	<b>TOTAL</b>		<b>4861</b>	<b>5588</b>	<b>5567</b>	<b>6256</b>	<b>4945</b>	<b>4543</b>	<b>5505</b>	<b>0</b>	<b>0</b>	<b>0</b>	<b>0</b>	<b>37266</b>
	ER-SR	Tal.-Kol. Interconnector	227.01	247.0	349.0	359.0	259.6	258.0	67.0					1766.63
	Net IR (Excl. Tal.-Il)		3063	3736	3790	4607	3614	3339	4070	0	0	0	0	26220

\*\* Data is taken from SRLDC

\*\*\* Data is taken from ERLDC # dedicated transmission line of M/s Adani Power Ltd. and not part of ISTS

**STOA (BILATERAL AND COLLECTIVE) & UI BILLING DETAILS- OCTOBER' 2012**

**BILATERAL SHORT TERM OPEN ACCESS**

Description	Name of RLDC	No. of Transactions	Energy Approved(MU)
OCT'12	NR	322	801
	WR	234	903
	SR	129	923
	ER	207	651
	NER	26	38
<b>TOTAL</b>		<b>918</b>	<b>3315</b>

**COLLECTIVE SHORT TERM OPEN ACCESS**

MONTH	NO. of Buyers/Sellers	Approved Energy (MU)
APR'12	1676	1337
MAY'12	1535	1478
JUN'12	1650	1630
JULY'12	1938	1572
AUG'12	1876	1860
SEP'12	1725	1910
OCT'12	2017	2301
<b>TOTAL</b>	<b>12417</b>	<b>12089</b>

**MONTHLY UI BILLING DETAILS**

REGION	(RS. IN CRORES)				
	NORTH	WEST	EAST	SOUTH	NORTH EAST
(Upto 29th APR'12)	342	249	161	88	17
(Upto 27th MAY'12)	937	630	363	154	29
(Upto 01st JULY'12)	3,003	1,109	807	238	58
(Upto 29th JULY'12)	2,252	1,673	1,342	315	86
(Upto 26th AUG'12)	3,119	1,778	1,417	364	104
(upto 30th SEP'12)	3,220	1,850	1,485	425	115
( upto 21st OCT'12)	3,309	1,912	1,522	451	124

**POWER MARKET INFORMATION**  
**EXCHANGES THROUGH POWER EXCHANGES ( IEX & PXI) - OCT' 2012**

S. No.	Regional Entity	Region	Through Power Exchange in MU	
			Sale	Purchase
1	Punjab	NR	8.28	87.18
2	Haryana	NR	0.98	123.86
3	Rajasthan	NR	25.52	572.43
4	Delhi	NR	328.77	1.67
5	Uttar Pradesh	NR	23.19	309.66
6	Uttarakhand	NR	3.36	55.87
7	Himachal Pradesh	NR	114.78	16.58
8	J & K	NR	9.98	7.68
9	UT Chandigarh	NR	9.00	0.53
10	AD Hydro	NR	14.00	0.00
11	KW	NR	109.88	0.00
12	Shree Cement	NR	28.97	0.00
13	Nathpa Jhakri	NR	0.00	0.00
14	Baira Siul HEP(BS0)	NR	1.79	0.00
15	Chamera-I HEP(CM1)	NR	3.78	0.00
16	Chamera-II HEP(CM2)	NR	5.03	0.00
17	Dhauliganga HEP(DG0)	NR	4.46	0.00
18	Dulahasti HEP(DU0)	NR	10.42	0.00
19	Salal HEP(SL0)	NR	9.96	0.00
20	Sewa-II NHPC(SW2)	NR	1.08	0.00
21	Tanakpur HEP(TP0)	NR	3.17	0.00
22	Uri HEP(UR0)	NR	7.94	0.00
23	LANCO Budhil	NR	15.47	0.00
24	MP	WR	83.99	34.08
25	Maharashtra	WR	20.75	205.71
26	Gujarat	WR	341.78	396.85
27	Chattisgarh	WR	98.56	8.30
28	Goa	WR	0.00	3.64
29	Daman and Diu	WR	0.00	0.00
30	Dadra & Nagar Haveli	WR	0.00	0.00
31	JD	WR	179.04	0.00
32	LANCO AMK	WR	68.31	0.00
33	ACB India Limited	WR	3.25	0.00
34	Jindal Steel and Power Ltd	WR	59.99	0.00
35	Balco-II	WR	3.98	0.00
36	Sterlite(w3rse0)	WR	77.79	0.00
37	Andhra Pradesh	SR	60.61	128.40
38	Karnataka	SR	306.23	3.16
39	Kerala	SR	0.00	203.41
40	Tamilnadu	SR	0.00	86.94
41	Pondicherry	SR	0.00	0.00
42	Goa	SR	0.00	0.00
43	LANCO_KONDPLY	SR	0.00	0.00
44	SIMHAPURI	SR	0.00	0.00
45	MINAXI	SR	0.00	0.00
46	West Bengal	ER	136.86	13.30
47	Orissa	ER	19.71	9.62
48	Bihar	ER	0.00	0.00
49	Jharkhand	ER	0.00	0.00
50	Sikkim	ER	23.85	0.00
51	DVC	ER	22.01	0.00
52	STERLITE	ER	0.00	0.00
53	Maithon Power Ltd	ER	3.75	0.00
54	Arunachal Pradesh	NER	0.00	4.68
55	Assam	NER	16.79	25.18
56	Manipur	NER	0.00	0.00
57	Meghalaya	NER	4.99	1.77
58	Mizoram	NER	4.12	0.00
59	Nagaland	NER	0.00	0.00
60	Tripura	NER	3.87	0.42
61	Agartala GTPP_AG0	NER	4.47	0.00
62	KOPIII_KP1	NER	0.00	0.00
63	Assam GBPP_KT0	NER	7.67	0.00
64	LOKTAK	NER	8.74	0.00
Total			2301	2301

**RENEWABLE CERTIFICATE MECHANISM**  
**MONTH:- OCTOBER 2012**

RE Source & Unit wise break up (Oct,12)					
Sr.No	Source Wise	Accreditation		Registration	
		Capacity(MW)	Unit	Capacity(MW)	Unit
1	Wind	41.9	18	79.4	18
2	Urban or Municipal Waste	0	0	0	0
3	Solar PV	0	0	0	0
4	Small Hydro	0	0	0	0
5	Others	0	0	0	0
6	Biomass	23.33	4	30.28	3
7	Bio-fuel cogeneration	11.77	3	57.17	9
	<b>Total</b>	<b>77</b>	<b>25</b>	<b>166.85</b>	<b>30</b>

RECs Issued (Oct,12)			
Sr.No.	Non Solar	Solar	Total
1	619946	1412	621358

Redemption of REC (Oct,12)			
Sr.No.	Non Solar	Solar	Total
1	222700	1791	224491

RE Source & Unit wise break up (Apr,12 - Oct,12)					
Sr.No	Source Wise	Accreditation		Registration	
		Capacity(MW)	Unit	Capacity(MW)	Unit
1	Wind	792.38	210	810.4	227
2	Urban or Municipal Waste	16	2	0	0
3	Solar PV	2.86	5	18.16	7
4	Small Hydro	7.2	2	5.7	2
5	Others	0	0	0	0
6	Biomass	79.23	10	127.4	16
7	Bio-fuel cogeneration	171.34	20	138.47	20
	<b>Total</b>	<b>1069.01</b>	<b>249</b>	<b>1100.13</b>	<b>272</b>

RECs Issued (Apr,12 - Oct,12)			
Sr.No.	Non Solar	Solar	Total
1	2656666	3946	2660612

Redemption of REC (Apr,12 - Oct,12)			
Sr.No.	Non Solar	Solar	Total
1	1395645	3861	1399506

## **IMPORTANT ELEMENTS COMMISSIONED DURING OCTOBER 2012**

<b>SL. NO</b>	<b>ELEMENT</b>	<b>VOLTAGE (KV)</b>	<b>DATE OF CHARGING</b>
1	ICT # III of 1500 MVA charged for first time at Jhatikara S/S	400	0511Hrs on 01.10.2012
2	ICT # I of 1500 MVA charged for first time at Jhatikara S/S	400	0440Hrs on 01.10.2012
3	CGPL Unit-III of 830 MW came to commercial operation	400	0531 Hrs on 27.10.2012
4	63 MVAR Line Reactor for Silchar-Bongaigaon-II line charged for first time	400	1915 Hrs 31.10.2012
5	In WR,240 MVAR Bus Reactor at Satna charged for first time	765	2139 Hrs on 31.10.2012
6	In NR, at Agra S/S (3*80) MVAr Bus Reactor charged for 1 <sup>st</sup> time	765	2025 Hrs on 31.10.2012
7	In NR, at Allahabad S/S 125 MVAr Bus Reactor charged for 1 <sup>st</sup> time	400	1959 Hrs on 31.10.2012
8	In NR, Gaya-Fatehpur line reactor of (3*110) MVAr charged for 1 <sup>st</sup> time	765	1919 Hrs on 31.10.2012
9	In ER, Kahalgaon-Banka line was charged for 1 <sup>st</sup> time.	400	1629 Hrs on 31.10.2012
10	In ER, Banka-Biharsharrif line was charged for 1 <sup>st</sup> time.	400	1553 Hrs on 31.10.2012
11	In WR,240 MVAR Line Reactor of Ranchi-Bilaspur(taken in service as Bus Reactor at Bilaspur) charged for first time.	765	1750 Hrs on 31.10.2012

## VOLTAGE PROFILE - OCTOBER 2012

Sl. No.	REGION	SUBSTATION	Maximum(kV)	Minimum(kV)
1	ER	FARAKKA	429	415
2		KAHALGAON	431	409
3		TALCHER	423	409
4		BINAGURI	430	402
5		PURNEA	428	400
6		MUZAFFARPUR	427	387
7		JAMSHEDPUR	431	417
8		RENGALI	418	406
9		JEYPORE	427	396
1	NR	NALLAGARH	430	399
2		BHIWADI	432	398
3		BALLABGARH	432	403
4		ALLAHABAD	432	408
5		HISSAR	420	393
6		BAWANA	430	403
7		KANPUR	427	397
8		BASSI	434	400
9		LUCKNOW PG	432	403
10		MOGA	425	396
11		RATANGARH	424	400
1	WR	ASOJ	419	400
2		ITARSI	425	395
3		JETPUR	423	391
4		KARAD	434	406
5		KASOR	424	411
6		BINA	426	393
7		GWALIOR	428	401
8		RAIPUR	433	419
9		JABALPUR	428	401
10		DHULE	436	398



## VOLTAGE PROFILE - OCTOBER 2012

Sl. No.	REGION	SUBSTATION	Maximum(kV)	Minimum(kV)
1	SR	SRIPERUMPUDUR	425	388
2		NEYVELI	421	395
3		SALEM	422	389
4		BANGALORE	421	383
5		HOSUR	417	389
6		RAMAGUNDAM	421	399
7		VIJAYAWADA	433	414
8		TIRIVANDRUM	430	388
9		HYDERABAD	340	403
1	NER	MISA	428	394
2		BALIPARA	417	379
3		BONGAIGAON	419	392
4		SALAKATI 220 kV	234	218
5		HAFLONG 132 kV	136	124
6		AIZWAL 132 kV	137	119
7		KUMARGHAT 132 kV	134	125
8		IMPHAL 132 kV	141	123
9		Khlieriat_PG 132 kV	136	122