

पावर सिस्टम ऑपरेशन कारपोरेशन लिमिटेड

(पावरग्रिड की पूर्ण स्वामित्व प्राप्त सहायक कंपनी)

POWER SYSTEM OPERATION CORPORATION LIMITED

(A wholly owned subsidiary of POWERGRID)



पंजीकृत एवं केन्द्रीय कार्यालय : बी - 9, कुतुब इंस्टीट्यूशनल एरिया, कटवारिया सराय, नई दिल्ली - 110 016
Registered & Corporate Office : B - 9, Qutab Institutional Area, Katwaria Sarai, New Delhi - 110 016
Website : www.nldc.in, www.nldcindia.in, Tel. : 011-26536832, 26524522, Fax : 011-26524525, 26536901

संदर्भ संख्या:-POSOCO/NLDC/GM/

दिनांक: 25.10.2012

सेवा में,

वितरण सूची के अनुसार

विषय:- निष्पादन रिपोर्ट - सितम्बर 2012

महोदय,

आई०ई०जी०सी०-2010 के प्रावधान के अनुसार, - सितम्बर 2012 माह की अखिल भारतीय प्रणाली की निष्पादन रिपोर्ट

धन्यवाद

भवदीय

Ar. K. Bansal
(आर. के. बंसल)

अपर महाप्रबंधक

(रा०भा०प्रे०के०)

संलग्नक: मासिक प्रणाली रिपोर्ट

Distribution List

1. Secretary ,CERC, 3rd & 4th Floor , Chanderlok Building,36,Janpath,New Delhi-110001
2. Chief Engineer(GM),CEA,Sewa Bhavan, R.K.Puram , New Delhi-110066
3. Member Secretary ,NRPC,18/A,SJSS Marg, Katwaria Sarai,New Delhi-110016
4. Member Secretary ,WRPC,F-3,MIDC Area,Andheri (East),Mumbai-400093
5. Member Secretary,SRPC,29,Race Course Cross Road,Bangalore-560009
6. Member Secretary,ERPC,14,Golf Club Road , Kolkata-7000033
7. Member Secretary,NERPC,Meghalaya State Housing Finance Cooperative Society Ltd.
Building,Nongrim Hills , Shillong -793003
8. General Manager , ERLDC,14, Golf Club Road , Kolkata-7000033
9. General Manager, WRLDC,F-3,MIDC Area,Andheri (East),Mumbai-400093
10. General Manager, NRLDC,18/A,SJSS Marg, Katwaria Sarai,New Delhi-110016
11. General Manager , SRLDC, 29,Race Course Cross Road,Bangalore-560009
12. AGM,NERLDC,Dongtiah,Lower Nongrah,Laplang,Shillong-793006

POWER SYSTEM OPERATION CORPORATION LTD
NATIONAL LOAD DESPATCH CENTRE



OPERATIONAL PERFORMANCE REPORT FOR THE
MONTH OF SEPTEMBER 2012

CONTENTS

1. SUMMARY OF REPORT FOR THE MONTH OF SEPTEMBER 2012
2. REGION WISE INSTALLED CAPACITY
3. PEAK DEMAND MET AT NATIONAL LEVEL
4. ENERGY CONSUMPTION AT NATIONAL LEVEL
5. FREQUENCY PROFILE
6. HYDRO GENERATION AT NATIONAL LEVEL
7. WIND GENERATION AT NATIONAL LEVEL
8. PEAK DEMAND & ENERGY MET AT REGIONAL LEVEL
9. SCHEDULE & DRAWAL AT REGIONAL LEVEL
10. INTER-REGIONAL EXCHANGES
11. BILATERAL SHORT-TERM OPEN ACCESS & UI DETAILS
12. POWER MARKET INFORMATION
13. RENEWABLE ENERGY CERTIFICATE MECHANISM
14. IMPORTANT EVENTS/DISTURBANCES
15. IMPORTANT ELEMENTS COMMISSIONED
16. VOLTAGE PROFILE

SUMMARY OF REPORT FOR THE MONTH OF SEPTEMBER 2012

- During the month of September 2012, the overall system was running normal to the large extent . The maximum of all India peak demand met was 117120 MW (on 28 -09-2012) which is 6.8% more as compared to last year September month demand (109646 MW) and 3.9% more as compared to August 2012 demand (112697MW).
- For 83.73% of time the NEW grid frequency was in the IEGC band (49.5 – 50.2) against 89.72% of the time in the last month (August 2012). For SR Grid, the frequency remained within the IEGC band for 95.88% of the time against 95.17% of the time in the last month (August 2012).The frequency band changed from 17 Sep onwards from 49.5-50.2 to 49.7-50.2.
- All India energy consumption was 74319 MU at the average of 2477 MU/day which is 0.03% more than that of last month (August 2012) average energy consumption (74293MUs, Average 2476MU/day) and 4.8% more than the last year September month average energy consumption (70870 MU, Average 2362 MU/day).
- There was around 15.6% decrement in average all India Hydro generation compared to last year & 6% increment compared to last month.
- Regarding wind generation, there was around 31.2% decrement in average all India wind generation compared to last month. September 2012 average wind generation was 97 MU/day against 141 MU/day in August 2012.

6. ALL INDIA REGIONWISE GENERATING INSTALLED CAPACITY (MW) OF POWER UTILITIES INCLUDING ALLOCATED SHARES IN JOINT AND CENTRAL SECTOR UTILITIES

(As on 30-09-12)

SL. NO.	REGION	THERMAL				Nuclear	HYDRO (Renewable)	R.E.S.@ (MNRE)	TOTAL
		COAL	GAS	DSL	TOTAL				
1	Northern	29923.50	4671.26	12.99	34607.75	1620.00	15423.75	4437.65	56089.15
2	Western	43199.50	8254.81	17.48	51471.79	1840.00	7447.50	8146.69	68905.98
3	Southern	23182.50	4962.78	939.32	29084.60	1320.00	11338.03	11769.32	53511.95
4	Eastern	22337.88	190.00	17.20	22545.08	0.00	3882.12	410.71	26837.91
5	N. Eastern	60.00	824.20	142.74	1026.94	0.00	1200.00	228.00	2454.94
6	Islands	0.00	0.00	70.02	70.02	0.00	0.00	6.10	76.12
7	All India	118703.38	18903.05	1199.75	138806.18	4780.00	39291.40	24998.46	207876.04

Captive Generation Capacity in Industries having demand of 1 MW or above, Grid interactive(as on 31-03-2011)=34444.12 MW

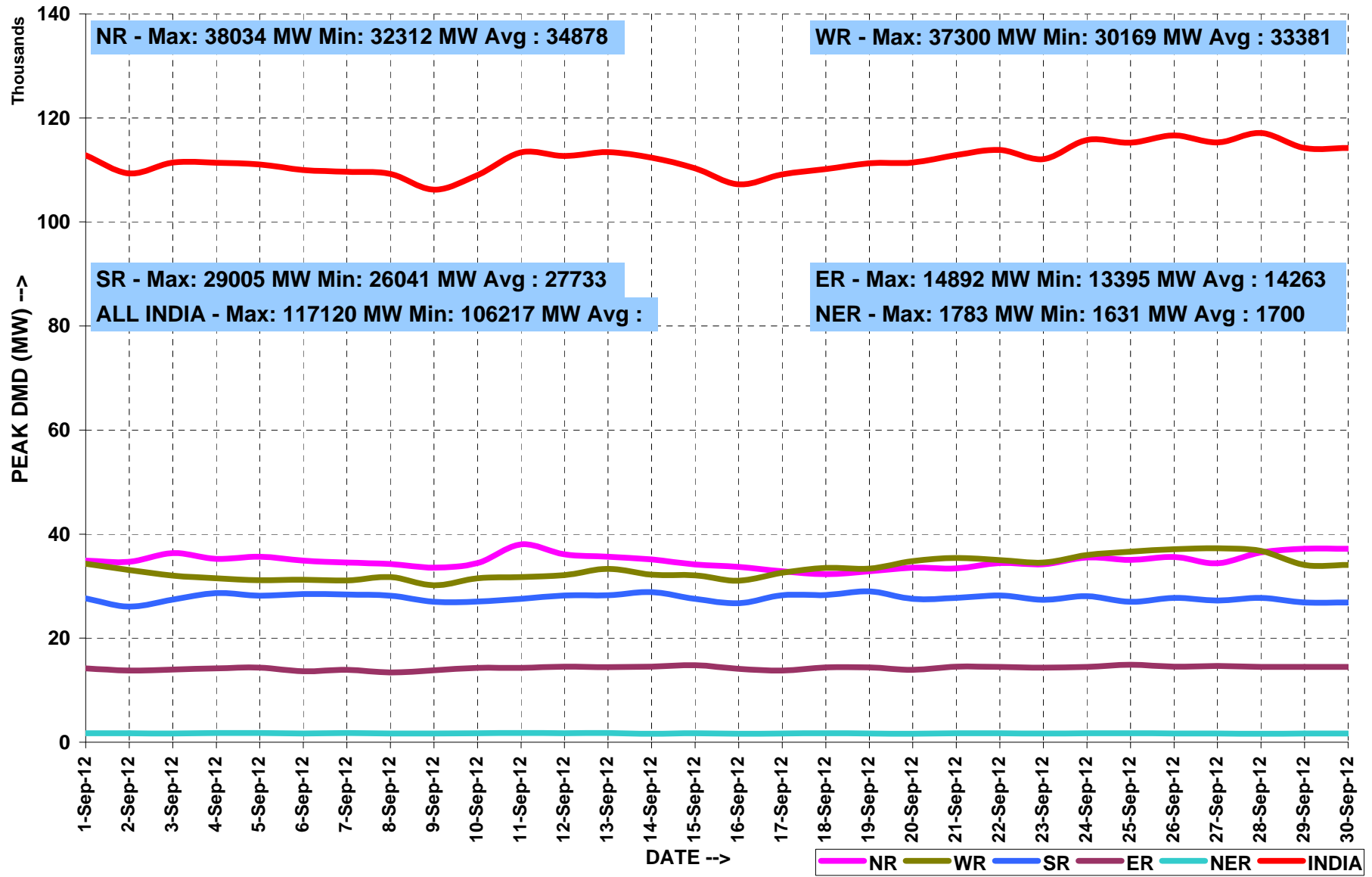
PEAK DEMAND MET AT NATIONAL LEVEL

MONTH:- SEPTEMBER 2012

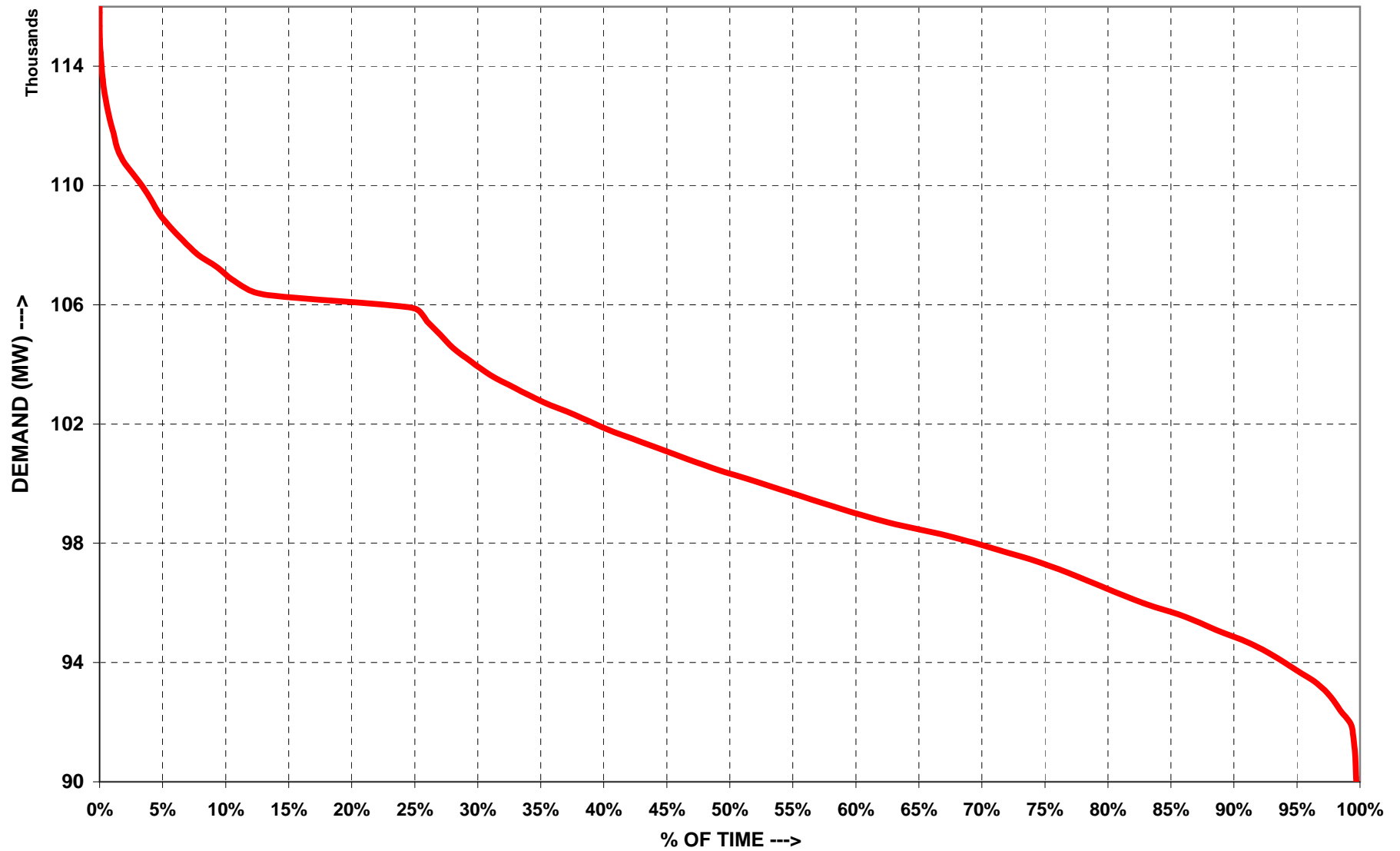
All figures in MW

Date	NR	WR	SR	ER	NER	TOTAL
9/1/2012	34913	34323	27661	14202	1709	112808
9/2/2012	34687	33083	26041	13795	1709	109315
9/3/2012	36337	32043	27412	13959	1676	111427
9/4/2012	35220	31506	28689	14214	1764	111393
9/5/2012	35651	31146	28173	14312	1748	111030
9/6/2012	34905	31225	28493	13659	1677	109959
9/7/2012	34546	31070	28376	13894	1749	109635
9/8/2012	34267	31728	28176	13395	1686	109252
9/9/2012	33568	30169	26994	13821	1665	106217
9/10/2012	34431	31507	27022	14307	1725	108992
9/11/2012	38034	31757	27538	14286	1756	113371
9/12/2012	36136	32119	28194	14504	1711	112664
9/13/2012	35640	33337	28232	14436	1783	113428
9/14/2012	35125	32214	28850	14508	1644	112341
9/15/2012	34157	32064	27568	14790	1720	110299
9/16/2012	33694	31057	26712	14098	1651	107212
9/17/2012	32863	32558	28248	13792	1680	109141
9/18/2012	32312	33488	28283	14362	1724	110169
9/19/2012	32840	33390	29005	14374	1681	111290
9/20/2012	33541	34794	27547	13913	1631	111426
9/21/2012	33422	35431	27724	14540	1735	112852
9/22/2012	34438	35020	28226	14456	1716	113856
9/23/2012	34209	34538	27347	14315	1661	112070
9/24/2012	35513	35973	28054	14464	1736	115740
9/25/2012	35032	36623	26974	14892	1739	115260
9/26/2012	35626	37104	27750	14501	1669	116650
9/27/2012	34395	37300	27247	14662	1673	115277
9/28/2012	36481	36776	27728	14485	1650	117120
9/29/2012	37175	34046	26857	14472	1670	114220
9/30/2012	37175	34046	26857	14472	1670	114220
MAXIMUM	38034	37300	29005	14892	1783	117120
MINIMUM	32312	30169	26041	13395	1631	106217
AVERAGE	34878	33381	27733	14263	1700	111954

PEAK DEMANDS MET DURING THE MONTH OF SEPTEMBER' 2012



ALL INDIA LOAD DURATION CURVE FOR SEPTEMBER' 2012



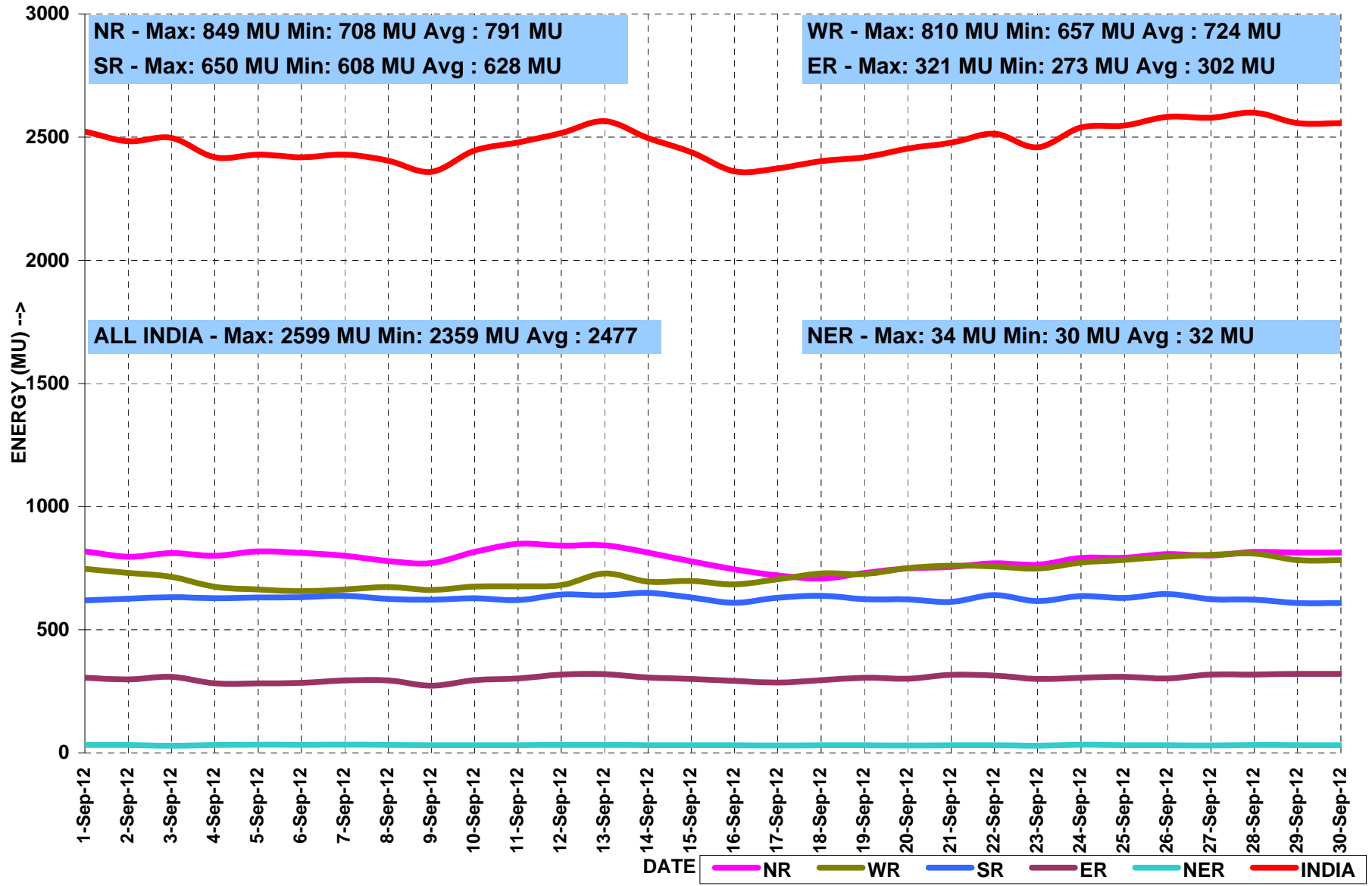
ENERGY MET AT NATIONAL LEVEL

MONTH:- SEPTEMBER 2012

All figures in MU

Date	NR	WR	SR	ER	NER	TOTAL
9/1/2012	818	748	619	305	33	2523
9/2/2012	796	731	626	298	32	2483
9/3/2012	811	715	632	309	30	2497
9/4/2012	801	674	628	283	33	2419
9/5/2012	818	664	631	283	34	2429
9/6/2012	812	657	632	284	33	2418
9/7/2012	800	664	638	294	33	2429
9/8/2012	779	674	625	294	32	2404
9/9/2012	771	662	622	273	32	2359
9/10/2012	816	675	628	295	31	2446
9/11/2012	849	676	620	302	31	2478
9/12/2012	842	681	643	318	32	2517
9/13/2012	843	729	640	320	33	2565
9/14/2012	814	695	650	306	31	2496
9/15/2012	778	698	631	300	32	2439
9/16/2012	746	684	609	292	31	2362
9/17/2012	721	705	630	286	30	2373
9/18/2012	708	729	638	296	31	2403
9/19/2012	731	727	624	305	32	2418
9/20/2012	749	750	623	301	30	2453
9/21/2012	756	760	613	317	31	2477
9/22/2012	770	758	641	314	31	2514
9/23/2012	764	748	616	300	30	2459
9/24/2012	792	773	637	305	33	2539
9/25/2012	793	784	629	309	32	2547
9/26/2012	808	796	645	303	31	2583
9/27/2012	801	804	624	319	31	2579
9/28/2012	816	810	622	318	32	2599
9/29/2012	814	783	608	321	31	2557
9/30/2012	814	783	608	321	31	2557
TOTAL	23729	21735	18832	9071	952	74319
MAXIMUM	849	810	650	321	34	2599
MINIMUM	708	657	608	273	30	2359
AVERAGE	791	724	628	302	32	2477

ENERGY MET DURING THE MONTH OF SEPTEMBER' 2012

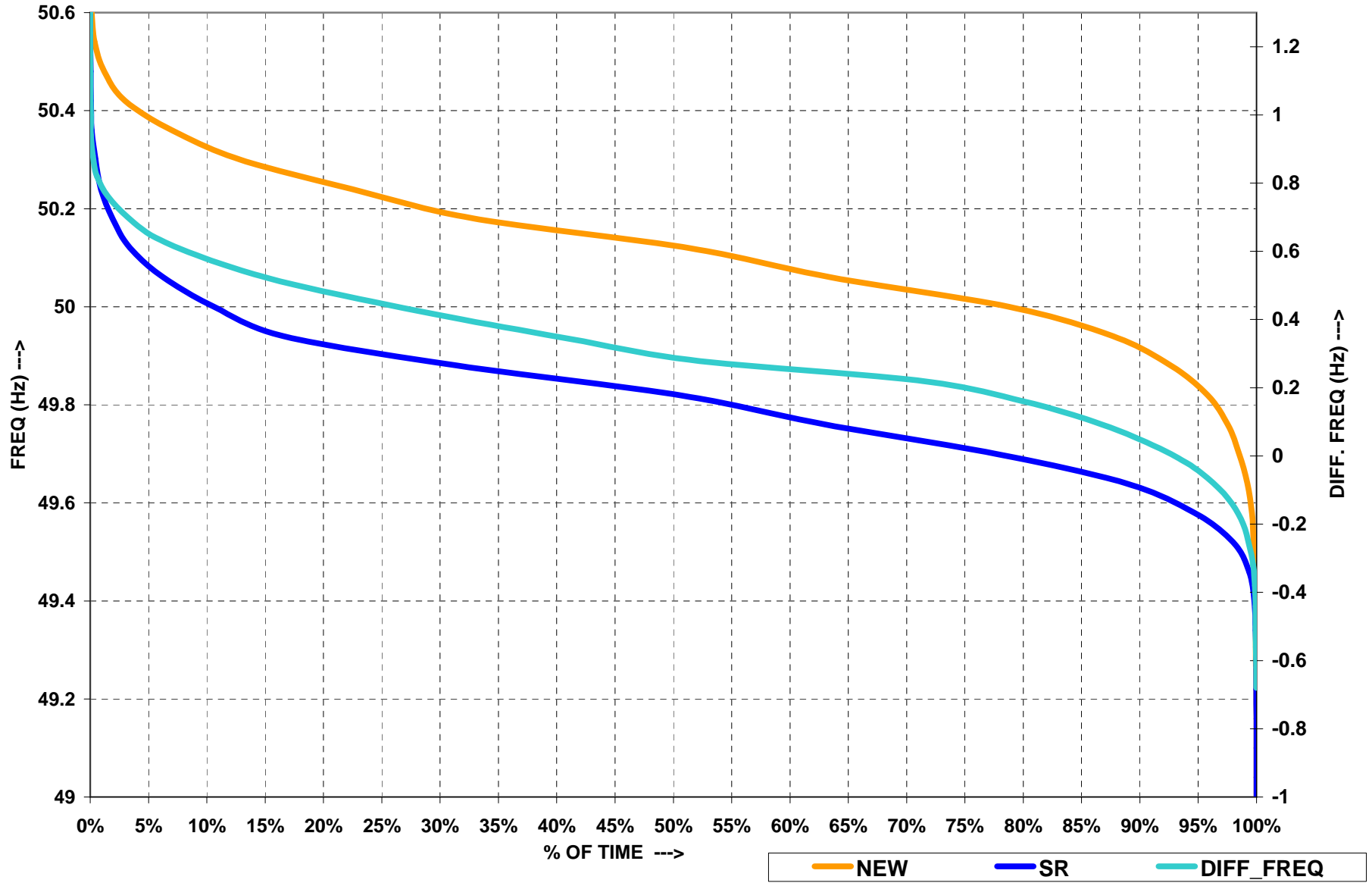


FREQUENCY PROFILE FOR THE MONTH OF SEPTEMBER 2012

SR GRID										
FREQUENCY PROFILE		< 48.5	48.5 - 49.5	< 49.5	49.5 - 50.2	>50.2		Max. Freq	Min. Freq	Avg. Freq
% TIME	Apr-12	0.00	7.79	7.79	91.28	0.93		50.66	48.66	49.69
	May-12	0.00	5.61	5.61	94.01	0.38		50.63	48.81	49.7
	Jun-12	0.00	7.83	7.83	91.03	1.14		50.79	48.86	49.68
	Jul-12	0.00	0.00	6.95	92.18	0.87		50.61	48.81	49.69
	Aug-12	0.00	3.17	3.17	95.57	1.26		50.55	48.86	49.75
	Sep-12 (till 16 sep)	0.00	1.68	1.68	95.88	2.44		50.58	49.12	49.81
FREQUENCY PROFILE		<49.0	49.0-49.7	<49.7	49.7-50.2	>50.2		Max. Freq	Min. Freq	Avg. Freq
% TIME	Sep-12 (17 Sep onwards)	0.00	0.00	18.37	81.43	0.2		50.51	49.12	49.79

NEW GRID										
FREQUENCY PROFILE		< 48.5	48.5 - 49.5	< 49.5	49.5 - 50.2	>50.2		Max. Freq	Min. Freq	Avg. Freq
% TIME	Apr-12	0.00	2.38	2.38	93.68	3.94		50.66	49.08	49.9
	May-12	0.00	10.82	10.82	87.82	1.36		50.75	48.82	49.8
	Jun-12	0.00	19.95	19.95	78.66	1.39		50.68	48.75	49.7
	Jul-12	0.00	24.38	24.38	73.59	2.03		51.21	49.79	49.68
	Aug-12	0.00	1.57	1.57	89.72	8.71		50.65	48.82	49.95
	Sep-12 (till 16 sep)	0.00	0.60	0.60	83.73	15.67		50.65	48.96	50.02
FREQUENCY PROFILE		<49.0	49.0-49.7	<49.7	49.7-50.2	>50.2		Max. Freq	Min. Freq	Avg. Freq
% TIME	Sep-12 (17 Sep onwards)	0.00	3.22	3.22	84.09	12.69		50.65	48.96	50.03

FREQUENCY DURATION CURVES FOR SEPTEMBER' 2012



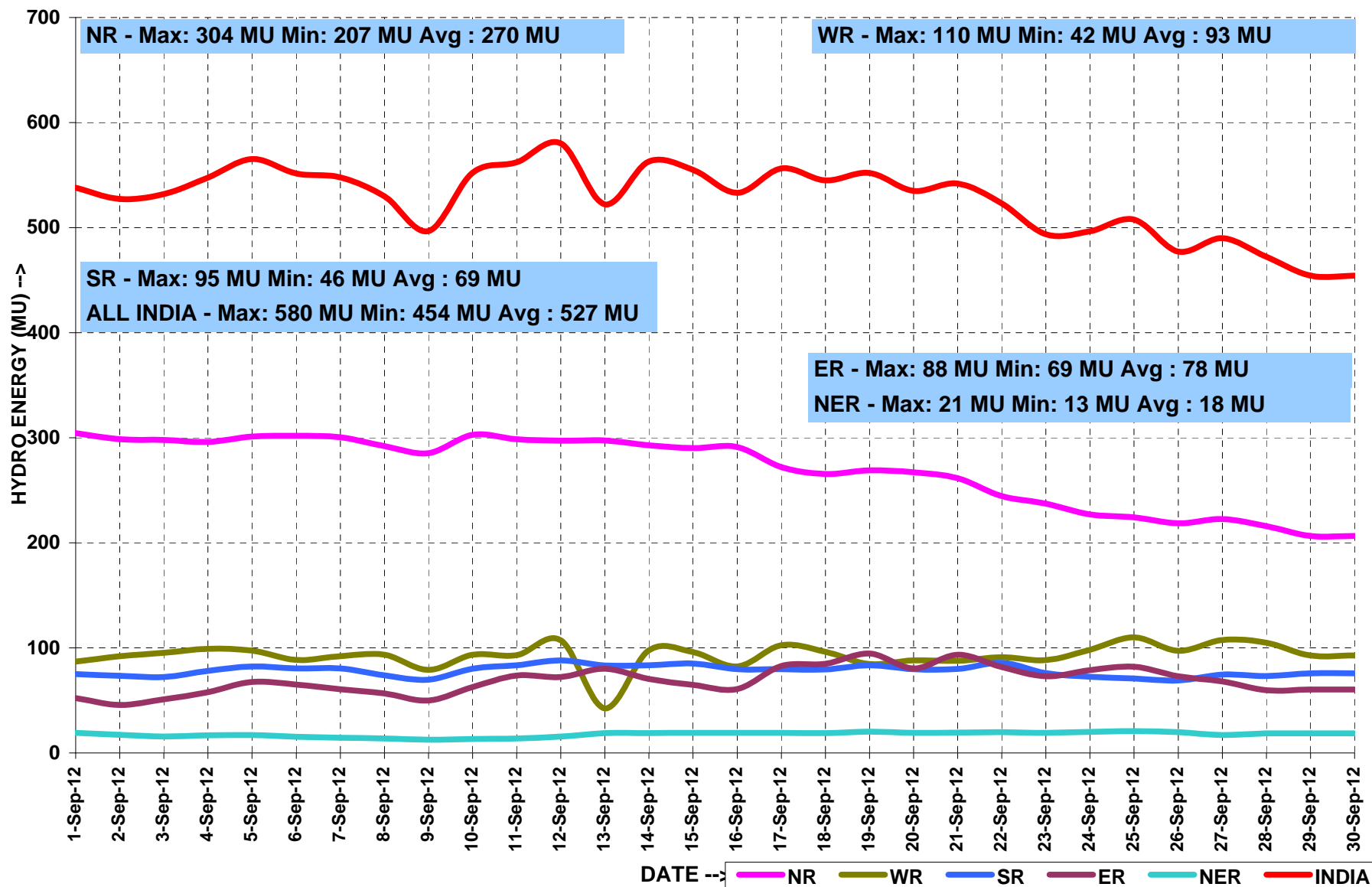
HYDRO GENERATION AT NATIONAL LEVEL

MONTH:- SEPTEMBER 2012

All figures in MU

Date	NR	WR	SR	ER	NER	TOTAL
9/1/2012	304	87	52	75	19	538
9/2/2012	299	92	46	73	17	527
9/3/2012	298	95	51	72	16	532
9/4/2012	296	99	58	78	17	548
9/5/2012	301	97	68	82	17	565
9/6/2012	302	89	65	81	16	551
9/7/2012	300	92	61	80	14	548
9/8/2012	292	93	57	74	14	530
9/9/2012	285	79	50	70	13	497
9/10/2012	303	93	63	80	13	552
9/11/2012	299	93	74	84	14	562
9/12/2012	297	107	72	88	16	580
9/13/2012	297	42	80	83	19	522
9/14/2012	293	98	70	83	19	563
9/15/2012	290	96	65	85	19	555
9/16/2012	291	82	61	80	19	533
9/17/2012	272	103	83	80	19	556
9/18/2012	266	96	85	80	19	545
9/19/2012	269	85	95	84	20	552
9/20/2012	267	88	81	80	19	535
9/21/2012	262	88	93	80	19	542
9/22/2012	245	91	82	86	20	523
9/23/2012	237	88	73	76	19	494
9/24/2012	227	98	79	73	20	497
9/25/2012	224	110	82	71	21	508
9/26/2012	219	97	73	69	20	477
9/27/2012	223	108	68	75	17	490
9/28/2012	216	105	60	73	19	472
9/29/2012	207	93	60	76	19	454
9/30/2012	207	93	60	76	19	454
TOTAL	8086	2778	2064	2344	530	15803
MAXIMUM	304	110	95	88	21	580
MINIMUM	207	42	46	69	13	454
AVERAGE	270	93	69	78	18	527

HYDRO ENERGY DURING THE MONTH OF SEPTEMBER' 2012



WIND GENERATION AT NATIONAL LEVEL

MONTH:- SEPTEMBER 2012

All figures in MU

Date	NR	WR	SR	ER	NER	TOTAL
9/1/2012	1.8	12.3	90.4	104.5
9/2/2012	2.5	12.6	95.4	110.5
9/3/2012	4.6	25.4	99.3	129.3
9/4/2012	0.8	21.2	99.6	121.6
9/5/2012	4.9	21.9	88.7	115.5
9/6/2012	8.3	25.8	88.2	122.3
9/7/2012	9.0	20.6	81.1	110.7
9/8/2012	5.0	23.6	72.2	100.8
9/9/2012	9.6	31.0	80.4	121.0
9/10/2012	6.5	31.4	87.2	125.1
9/11/2012	1.3	33.0	86.2	120.5
9/12/2012	1.6	25.9	80.0	107.5
9/13/2012	2.3	71.9	82.1	156.3
9/14/2012	8.2	32.9	93.5	134.6
9/15/2012	11.3	43.6	87.0	141.9
9/16/2012	6.0	39.1	77.0	122.1
9/17/2012	5.2	25.0	77.4	107.6
9/18/2012	3.5	13.1	64.6	81.2
9/19/2012	1.0	3.7	32.7	37.4
9/20/2012	1.7	7.5	43.6	52.8
9/21/2012	5.3	7.8	27.4	40.5
9/22/2012	9.9	13.9	49.3	73.1
9/23/2012	15.0	19.0	39.2	73.2
9/24/2012	10.8	24.5	71.9	107.2
9/25/2012	6.9	18.8	52.7	78.4
9/26/2012	3.3	12.1	65.4	80.8
9/27/2012	0.5	11.0	47.4	58.9
9/28/2012	1.6	10.2	43.3	55.1
9/29/2012	2.6	9.6	39.5	51.7
9/30/2012	1.5	9.6	67.3	78.4
TOTAL	153	658	2110	2921
MAXIMUM	15	72	100	156
MINIMUM	1	4	27	37
AVERAGE	5	22	70	97

ACTUAL POWER SUPPLY POSITION - SEPTEMBER 2012

REGION	STATE	Requirement/Availability in MU/DAY			Requirement/Availability in MU				Peak Demand/Peak Met in MW			
		Requirement	Energy met	Surplus(+)/ Deficit(-)	Requirement	Energy met	Surplus(+)/ Deficit(-)	% Shortage	Requirement	Peak Demand	Surplus(+)/ Deficit(-)	% Shortage
NR	Chandigarh	5	5	0	148	148	0	0	286	286	0	0
	Delhi	86	86	0	2571	2570	-1	0	4636	4621	-15	0
	Haryana	125	118	-7	3760	3543	-217	6	6743	6174	-569	-8
	H.P.	24	24	-1	726	708	-18	2	1240	1240	0	0
	J&K	38	29	-9	1140	880	-260	23	1705	1705	0	0
	Punjab	158	153	-4	4726	4595	-132	3	8147	8147	0	0
	Rajasthan	137	133	-4	4123	4002	-120	3	7404	7139	-265	-4
	U.P.	251	212	-39	7538	6355	-1183	16	12665	10958	-1707	-13
	Uttarakhand	31	30	-1	938	902	-36	4	1653	1518	-135	-8
	NFF/Railway	2	2	0	69	69	0	0	103	103	0	0
	TOTAL	858	792	-66	25739	23772	-1967	8	42070	37174	-4896	-12
WR	Gujarat	207	207	0	6224	6225	1	0	11169	11122	-47	0
	Madhya Pradesh	108	108	0	3234	3229	-5	0	6801	6799	-2	0
	Chhattisgarh	61	60	-1	1820	1804	-17	-1	3064	3044	-20	-1
	Maharashtra	331	322	-9	9929	9655	-273	-3	16496	16108	-388	-2
	Goa	8	7	0	227	223	-3	-2	407	398	-9	-2
	D&D	6	6	0	169	169	0	0	274	247	-27	-10
	DNH	14	14	0	414	411	-3	-1	606	607	1	0
	TOTAL	734	724	-10	22026	21716	-311	-1	37544	37300	-244	-1
SR	AP-TRANSCO	283	217	-67	8501	6503	-1998	-24	12461	10438	-2023	-16
	KPTCL	172	144	-28	5157	4310	-847	-16	9050	7863	-1187	-13
	KSEB	56	54	-2	1676	1627	-49	-3	3312	3158	-154	-5
	TNEB	254	208	-46	7612	6229	-1383	-18	11477	10534	-943	-8
	PONDY	6	6	0	186	178	-8	-4	309	308	-1	0
		TOTAL	771	628	-143	23133	18846	-4287	-19	37384	30269	-7115
ER	Bihar	39	32	-39	1170	949	-221	-19	2500	1680	-820	-33
	JSEB	20	18	-2	600	554	-46	-8	1115	1007	-108	-10
	GRIDCO	50	53	3	1510	1592	82	5	2515	2612	97	4
	DVC	69	70	1	2066	2110	44	2	3560	3428	-132	-4
	West Bengal	131	131	0	3930	3935	5	0	6976	7251	275	4
	TOTAL	309	305	-5	9276	9140	-136	-1	17282	15092	-2190	-13
NER	Arunachal Pradesh	2	2	0	52	47	-4	-8	115	112	-4	-3
	Assam	20	19	-1	603	566	-37	-6	1144	1073	-71	-6
	Manipur	2	2	0	53	51	-3	-5	118	114	-4	-3
	MeSEB	5	4	0	137	124	-12	-9	281	278	-3	-1
	Mizoram	1	1	0	34	31	-3	-8	65	64	-1	-1
	Nagaland	2	2	0	48	45	-3	-6	100	97	-3	-3
	Tripura	3	3	0	100	95	-5	-5	201	197	-4	-2
	TOTAL	34	32	-2	1027	960	-67	-7	2023	1934	-89	-4

SCHEDULE AND DRAWAL OF CONSTITUENTS - SEPTEMBER 2012

REGION	STATE	SCHEDULE (MU)	ACTUAL DRAWAL (MU)	Over drawal(+)/ Under Drawal(-) (MU)	SCHEDULE (MU/DAY)	ACTUAL DRAWAL (MU/DAY)	Over drawal(+)/ Under Drawal(-) (MU/DAY)
NR	Chandigarh	162	156	-5	5	5	0
	Delhi	2010	1874	-137	67	62	-5
	Haryana	1855	1794	-61	62	60	-2
	H.P.	87	85	-2	3	3	0
	J&K	507	448	-59	17	15	-2
	Punjab	2949	2930	-19	98	98	-1
	Rajasthan	1591	1583	-9	53	53	0
	U.P.	3309	3343	34	110	111	1
	Uttarakhand	320	340	20	11	11	1
	NFF/Railway	62	69	7	2	2	0
WR	Gujarat	1160	1123	-36	39	37	-1
	Madhya Pradesh	1108	1099	-9	37	37	0
	Maharashtra	3640	3645	6	121	122	0
	Chhattisgarh	376	397	22	13	13	1
	Goa	192	206	14	6	7	0
	D&D	172	169	-3	6	6	0
	D&NH	423	411	-11	14	14	0
SR	APTRANSCO	1888	2000	112	63	67	4
	KPTCL	775	761	-15	26	25	0
	KSEB	811	881	70	27	29	2
	TNEB	1413	1413	0	47	47	0
	PONDY	190	178	-12	6	6	0
	GOA(SR)	52	45	-7	2	1	0
ER	Bihar	997	989	-8	33	33	0
	JSEB	263	213	-49	9	7	-2
	DVC	-494	-441	54	-16	-15	2
	GRIDCO	235	262	27	8	9	1
	Sikkim	1073	1115	42	36	37	1
	WBSEB	26	28	2	1	1	0
NER	Arunachal Pradesh	58	51	-7	2	2	0
	Assam	374	386	12	12	13	0
	Manipur	64	51	-13	2	2	0
	MeSEB	46	40	-7	2	1	0
	Mizoram	32	27	-5	1	1	0
	Nagaland	42	34	-8	1	1	0
	Tripura	28	25	-4	1	1	0

Inter-Regional Exchanges (2012-2013)

All figs. in MUs
ALL FIGURES ARE IN MUS

		Apr-12	May-12	Jun-12	Jul-12	Aug-12	Sep-12	Oct-12	Nov-12	Dec-12	Jan-13	Feb-13	Mar-13	Total FINANCIAL YEAR 2012-13 (Till June'12)
*	WR-NR	HVDC Vindhyachal B/B	22.31	146.15	203.64	198.81	212.96	102.09						885.96
		HVDC Mundra-M'garh#				221.62	328.28	373.97						923.87
		220KV Aur.-Mal.	0.33	0.00	1.51	9.17	0.00	1.18						12.18
		220KV Kota/Morak-Badod	6.94	40.25	11.71	42.95	16.11	22.89						140.84
		400KV Agra-Gwalior	460.85	610.16	697.97	712.15	378.55	362.60						3222.29
		400KV Kankroli-Jerda	4.20	20.06	72.81	66.97	0.99	10.67						175.70
		400KV Bhinmal-Jerda	3.30	40.92	72.65	94.51	4.58	29.07						245.03
*	ER-NR	400KV Barh - Balia	114.24	214.97	175.75	122.11	46.34	61.71						735.12
		HVDC Sasaram B/B (Bypass wef 1 DEC'08)	22.34	63.33	58.57	180.46	101.20	127.47						553.37
		765 kV Gaya - Fatehpur					82.99	66.01						149.00
		400KV Mzp-Gkp	309.11	484.33	447.30	670.69	499.81	481.15						2892.38
		220/132kV	105.31	98.91	105.40	98.24	101.12	109.94						618.91
		400KV Patna-Balia	224.55	320.90	299.47	370.14	256.53	253.89						1725.47
		400kV Pusauli- Balia	0.00	0.00	7.54	13.48	6.48	9.36						36.86
		400KV Biharshariff-Balia	208.57	293.31	274.10	330.85	231.34	198.45						1536.62
*	NR-WR	HVDC Vindhyachal B/B	70.00	17.02	16.83	19.77	6.86	26.18						156.66
		220KV Aur.-Mal.	30.53	32.46	17.41	10.57	35.00	36.63						162.60
		220KV Kota/Morak-Badod	7.12	0.67	0.80	0.00	14.83	4.28						27.70
		400KV Agra-Gwalior	0.00	0.00	0.00	0.00	0.00	0.00						0.00
		400KV Kankroli-Jerda	86.94	14.45	11.31	5.92	46.44	28.02						193.08
		400KV Bhinmal-Jerda	68.76	8.67	12.42	8.51	42.83	7.75						148.95
*	NR-ER	400KV Barh - Balia	0.00	0.00	0.00	0.00	0.00	0.00						0.00
		220/132kV	27.60	26.92	26.92	28.05	28.32	22.51						160.33
		400KV Mzp-Gkp	0.00	0.00	0.00	0.00	0.00	0.00						0.00
		765 kV Gaya - Fatehpur					0.00	0.00						0.00
		HVDC Sasaram B/B (Bypass wef 1 DEC'08)	64.08	22.02	39.74	6.49	14.58	17.91						164.82
		400KV Patna-Balia	0.00	0.00	0.00	0.00	0.00	0.00						0.00
		400kV Pusauli- Balia				3.69	9.95	21.23						34.87
		400KV Biharshariff-Balia	0.00	0.00	0.00	0.00	0.00	0.00						0.00
*	NR-Nepal		19.17	11.91	11.91	13.25	10.28	3.52						70.04
**	ER-SR	HVDC-Gaz.	157.65	108.00	195.80	349.42	215.55	239.21						1265.63
		HVDC-Tal.	1571.43	1605.35	1427.68	1289.96	1070.88	945.53						7910.83
**	SR-ER	HVDC-Gaz.	1.64	1.16	2.83	0.42	3.51	0.00						9.56
***	ER-WR	AC links	115.00	206.00	102.00	0.00	35.00	41.00						499.00
***	WR-ER	AC links	349.00	426.00	601.00	656.00	376.00	227.00						2635.00
***	ER-NER	AC links	246.00	232.00	106.00	70.00	91.00	70.10						815.10
***	NER-ER	AC links	0.00	0.00	0.00	7.00	0.00	7.00						14.00
**	SR-WR	Chandrapur HVDC	0.00	0.00	0.00	0.00	0.00	0.00						0.00
**	WR-SR	Chandrapur HVDC	564.51	542.48	566.08	654.82	676.44	634.54						3638.87
	TOTAL		4861	5588	5567	6256	4945	4543	0	0	0	0	0	31761
	ER-SR	Tal.-Kol. Interconnector	227.01	247.0	349.0	359.0	259.6	258.0						1699.63
	Net IR (Excl. Tal.-Il)		3063	3736	3790	4607	3614	3339	0	0	0	0	0	22150

** Data is taken from SRLDC

*** Data is taken from ERLDC # dedicated transmission line of M/s Adani Power Ltd. and not part of ISTS

STOA (BILATERAL AND COLLECTIVE) & UI BILLING DETAILS- SEPTEMBER' 2012

BILATERAL SHORT TERM OPEN ACCESS

Description	Name of RLDC	No. of Transactions	Energy Approved(MU)
SEP'12	NR	387	2085
	WR	134	876
	SR	122	1025
	ER	206	616
	NER	8	34
TOTAL		857	4635

COLLECTIVE SHORT TERM OPEN ACCESS

MONTH	NO. of Buyers/Sellers	Approved Energy (MU)
APR'12	1676	1337
MAY'12	1535	1478
JUN'12	1650	1630
JULY'12	1938	1572
AUG'12	1876	1860
SEP'12	1725	1910
TOTAL	10400	9788

MONTHLY UI BILLING DETAILS

(RS. IN CRORES)

REGION	NORTH	WEST	EAST	SOUTH	NORTH EAST
(Upto 29th APR'12)	342	249	161	69	17
(Upto 27th MAY'12)	937	630	363	135	32
(Upto 01st JULY'12)	1,913	1,109	807	219	56
(Upto 15th JULY'12)	2,252	1,287	1,017	262	71
(Upto 26th AUG'12)	3,127	1,778	1,418	345	104
(upto 30th SEP'12)	3,229	1,850	1,486	406	115

POWER MARKET INFORMATION
EXCHANGES THROUGH POWER EXCHANGES (IEX & PXI) - SEP' 2012

S. No.	Regional Entity	Region	Through Power Exchange in MU	
			Sale	Purchase
1	Punjab	NR	0.00	327.02
2	Haryana	NR	0.00	161.92
3	Rajasthan	NR	7.07	319.32
4	Delhi	NR	105.09	1.62
5	Uttar Pradesh	NR	0.00	79.29
6	Uttarakhand	NR	20.74	13.71
7	Himachal Pradesh	NR	383.80	2.10
8	J & K	NR	1.71	0.00
9	UT Chandigarh	NR	9.62	0.00
10	AD Hydro	NR	24.79	0.00
11	KW	NR	177.91	0.00
12	Shree Cement	NR	8.16	0.00
13	Nathpa Jhakri	NR	0.00	0.00
14	Baira Siul HEP(BS0)	NR	3.88	0.00
15	Chamera-I HEP(CM1)	NR	11.87	0.00
16	Chamera-II HEP(CM2)	NR	11.42	0.00
17	Dhauliganga HEP(DG0)	NR	10.04	0.00
18	Dulahasti HEP(DU0)	NR	14.50	0.00
19	Salal HEP(SL0)	NR	21.01	0.00
20	Sewa-II NHPC(SW2)	NR	2.89	0.00
21	Tanakpur HEP(TP0)	NR	3.62	0.00
22	Uri HEP(UR0)	NR	14.58	0.00
23	LANCO Budhil	NR	1.95	0.00
24	MP	WR	343.86	39.29
25	Maharashtra	WR	4.88	245.87
26	Gujarat	WR	103.94	341.97
27	Chattisgarh	WR	26.44	3.17
28	Goa	WR	3.56	0.00
29	Daman and Diu	WR	0.00	0.00
30	Dadra & Nagar Haveli	WR	0.00	0.00
31	JD	WR	137.40	0.00
32	LANCO AMK	WR	31.64	0.00
33	ACB India Limited	WR	2.85	0.00
34	Jindal Steel and Power Ltd	WR	14.62	0.00
35	Balco-II	WR	0.00	0.00
36	Sterlite(w3rse0)	WR	0.00	0.00
37	Andhra Pradesh	SR	44.62	122.63
38	Karnataka	SR	232.53	4.25
39	Kerala	SR	0.00	126.72
40	Tamilnadu	SR	0.00	44.07
41	Pondicherry	SR	0.00	0.00
42	Goa	SR	0.00	0.00
43	LANCO_KONDPLY	SR	0.00	0.00
44	SIMHAPURI	SR	2.77	0.00
45	MINAXI	SR	0.00	0.00
46	West Bengal	ER	34.22	48.34
47	Orissa	ER	9.92	0.00
48	Bihar	ER	0.00	0.00
49	Jharkhand	ER	0.00	0.00
50	Sikkim	ER	22.74	0.00
51	DVC	ER	9.96	0.00
52	STERLITE	ER	0.36	0.00
53	Maithon Power Ltd	ER	0.02	0.00
54	Arunachal Pradesh	NER	0.00	0.49
55	Assam	NER	8.57	25.40
56	Manipur	NER	0.00	0.00
57	Meghalaya	NER	12.32	2.42
58	Mizoram	NER	5.86	0.00
59	Nagaland	NER	0.00	0.00
60	Tripura	NER	2.75	0.00
61	Agartala GTPP_AG0	NER	4.01	0.00
62	KOPIII_KP1	NER	0.00	0.00
63	Assam GBPP_KT0	NER	6.89	0.00
64	LOKTAK	NER	8.20	0.00
Total			1910	1910

RENEWABLE CERTIFICATE MECHANISM

MONTH:- SEPTEMBER 2012

RE Source & Unit wise break up (Sep,12)					
Sr.No	Source Wise	Accreditation		Registration	
		Capacity(MW)	Unit	Capacity(MW)	Unit
1	Wind	105.45	21	67.03	23
2	Urban or Municipal Waste	0	0	0	0
3	Solar PV	0	0	0	0
4	Small Hydro	5	1	2.2	1
5	Others	0	0	0	0
6	Biomass	0	0	14.4	2
7	Bio-fuel cogeneration	6.62	2	23.4	3
Total		117.07	24	107.03	29

RECs Issued (Sep,12)			
Sr.No.	Non Solar	Solar	Total
1	3312806	2534	3315340

Redemption of REC (Sep,12)			
Sr.No.	Non Solar	Solar	Total
1	2188643	2070	2190713

RE Source & Unit wise break up (Apr,12 - Sep,12)					
Sr.No	Source Wise	Accreditation		Registration	
		Capacity(MW)	Unit	Capacity(MW)	Unit
1	Wind	750.48	192	731	209
2	Urban or Municipal Waste	16	2	0	0
3	Solar PV	2.86	5	18.16	7
4	Small Hydro	7.2	2	5.7	2
5	Others	0	0	0	0
6	Biomass	55.9	6	97.12	13
7	Bio-fuel cogeneration	159.57	17	81.3	11
Total		992	224	933.28	242

RECs Issued (Apr,12 - Sep,12)			
Sr.No.	Non Solar	Solar	Total
1	3312806	2534	3315340

Redemption of REC (Apr,12 - Sep,12)			
Sr.No.	Non Solar	Solar	Total
1	2188643	2070	2190713

IMPORTANT EVENTS / DISTURBANCES - SEPTEMBER 2012

On 20.09.2012 at 2200 Hrs due to tripping of 132 kV Khandong – Kopili – I & tripping of 220 kV Bus Coupler at Kopili Substation, supply to Mizoram, Southern Assam, Tripura & Meghalaya interrupted. The system was restored at 2242 Hrs on 20.09.2012. Total generation & Load loss reported was 315 MW & 237 MW respectively.

IMPORTANT ELEMENTS COMMISSIONED DURING SEPTEMBER 2012

SL. NO	ELEMENT	VOLTAGE (KV)	DATE OF CHARGING
1	400 kV Bilaspur- ACBIL charged for first time	400	1620 Hrs on 08.09.2012
2	400 kV Vindhyachal- Jabalpur LILoed at Sasan	400	2220 Hrs on 15.09.2012
3	400 kV Bhiwani- Jhatikara synchronised for first time	765	1842 Hrs on 27.09.2012
4	Jhatikara Bus-II charged from Jhatikara end for first time	765	1915 Hrs 27.09.2012
5	240 MVAR Bus Reactor at Jhatikara S/S charged for first time	765	2018 Hrs on 27.09.2012
6	ICT # II of 3*500 MVA charged for first time at Jhatikara S/S	765	2050 Hrs on 27.09.12
7	80 MVAR Bus Reactor at Balipara S/S charged for first time	400	0017 Hrs on 29.09.2012
8	400 kV Bareilly- Mandola-II LILoed at Meerut	400	1746 Hrs on 29.09.2012
9	50 MVAR Line Reactor at Gaya S/S charged for first time	400	1213 Hrs on 29.09.2012
10	ICT # II of 1000 MVA charged for first time at Bhiwani S/S.	400	1352 Hrs on 30.09.2012
11	400 kV Bamnauli- Jhatikara-II synchronised for first time	400	1819 Hrs on 30.09.2012
12	125 MVAR Bus Reactor at Manesar S/S charged for first time	400	2223 Hrs on 30.09.2012
13	400 kV Mundaka- Jhatikara-I synchronised for first time	400	2302 Hrs on 30.09.2012
14	240 MVAR Line Reactor for Agra-Jhatikara line at Jhatikara S/S charged for first time	765	2315 Hrs on 30.09.2012
15	400 kV Mundaka- Jhatikara-II synchronised for first time	400	2352 Hrs on 30.09.2012

VOLTAGE PROFILE - SEPTEMBER 2012

Sl. No.	REGION	SUBSTATION	Maximum(kV)	Minimum(kV)
1	ER	FARAKKA	431	414
2		KAHALGAON	433	415
3		TALCHER	430	413
4		BINAGURI	422	401
5		PURNEA	425	401
6		MUZAFFARPUR	425	394
7		JAMSHEDPUR	431	419
8		RENGALI	424	409
9		JEYPORE	423	395
1	NR	NALLAGARH	422	388
2		BHIWADI	437	404
3		BALLABGARH	436	403
4		ALLAHABAD	438	408
5		HISSAR	421	390
6		BAWANA	425	394
7		KANPUR	428	398
8		BASSI	435	404
9		LUCKNOW PG	431	400
10		MOGA	421	388
11		RATANGARH	426	399
1	WR	ASOJ	420	400
2		ITARSI	427	400
3		JETPUR	437	403
4		KARAD	435	406
5		KASOR	420	406
6		BINA	429	388
7		GWALIOR	431	403
8		RAIPUR	435	415
9		JABALPUR	430	403
10		DHULE	438	408

VOLTAGE PROFILE - SEPTEMBER 2012

Sl. No.	REGION	SUBSTATION	Maximum(kV)	Minimum(kV)
1	SR	SRIPERUMPUDUR	421	382
2		NEYVELI	423	391
3		SALEM	431	386
4		BANGALORE	426	386
5		HOSUR	420	383
6		RAMAGUNDAM	425	408
7		VIJAYAWADA	436	416
8		TIRIVANDRUM	429	375
9		HYDERABAD	439	412
1	NER	MISA	428	396
2		BALIPARA	423	390
3		BONGAIGAON	411	379
4		SALAKATI 220 kV	235	215
5		HAFLONG 132 kV	141	124
6		AIZWAL 132 kV	136	116
7		KUMARGHAT 132 kV	135	124
8		IMPHAL 132 kV	144	121
9		Khlieriat_PG 132 kV	138	124