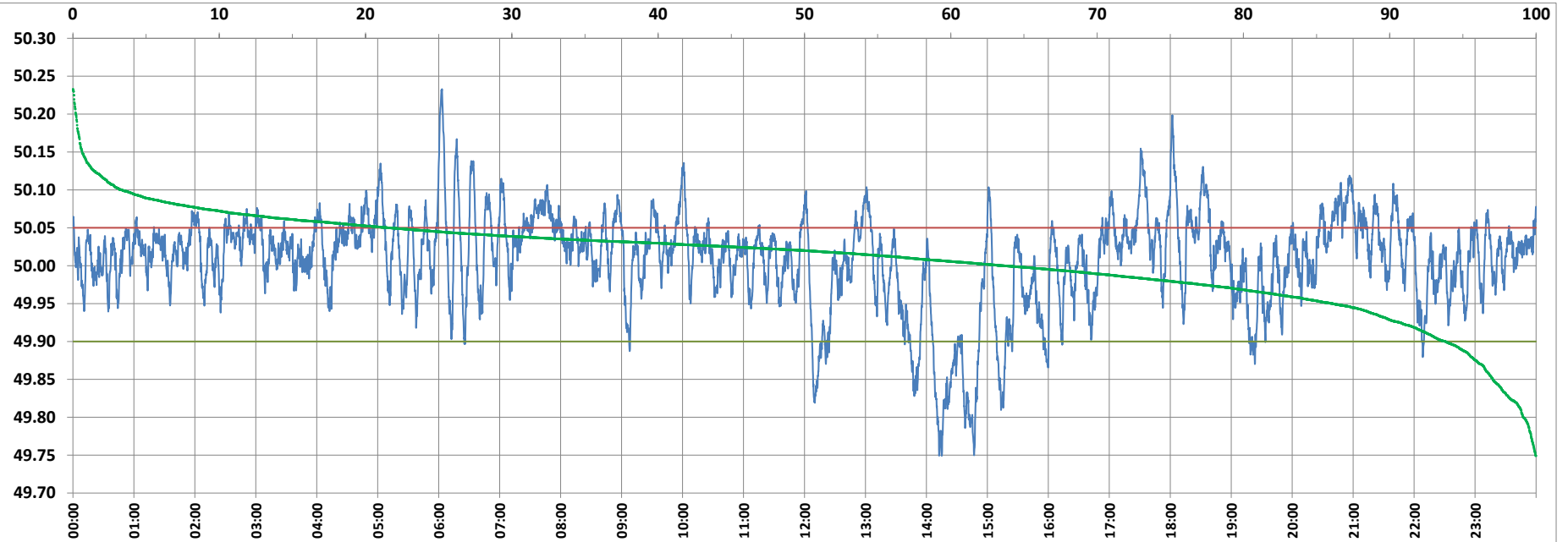


POWER SYSTEM OPERATION CORPORATION LIMITED

NATIONAL LOAD DESPATCH CENTRE, NEW DELHI



Frequency profile for 02-Mar-2022 (Wednesday)



<49.7	<49.90	<49.97	49.7-49.8	49.8-49.9	49.9-50.0	50.0-50.1	50.1-50.2	49.90-50.05	49.7-50.2	49.97-50.03	50.05-50.1	>50	>50.03	>50.05	>50.2	<49.95	49.95-50.05	49.90-49.95
0.00	6.22	20.69	0.88	5.34	30.25	60.19	3.14	72.26	99.79	39.75	18.18	63.53	39.56	21.53	0.21	13.92	64.55	7.71

Average Frequency : 50.008

Frequency Variation Index : 0.0394

Standard Deviation : 0.0622

Mileage: 45.0

FDI: 27.7

Instantaneous Frequency

Max	50.233	6:03:10
Min	49.749	14:15:00

15 minute Average Frequency

Max	50.089	21:00:00
Min	49.839	14:30:00

No. of excursions

above 50.03 Hz	241
below 49.97 Hz	96
above 50.00 Hz	162
below 50.00 Hz	161

Average time freq per excursion remains

below 49.97	0:03:06
above 50.03	0:02:22

No. of hours freq outside 49.9-50.05 Hz

6:39:30

Source : AGRA 10 Sec. (8640 samples)