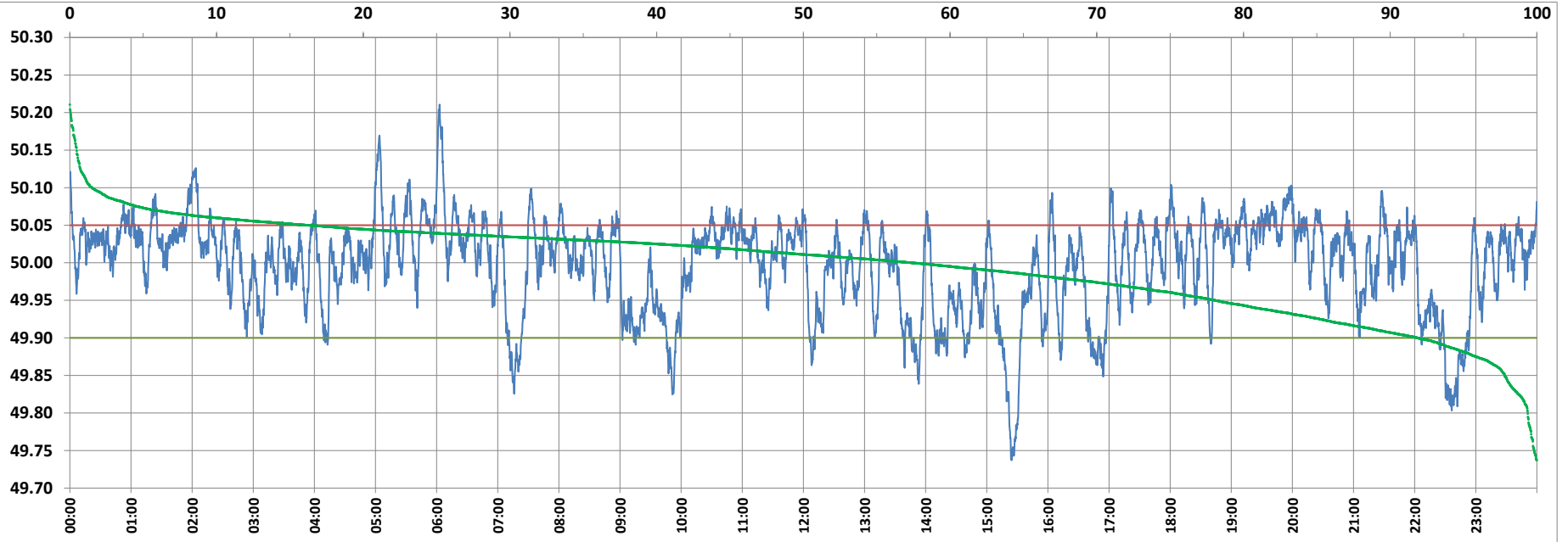


POWER SYSTEM OPERATION CORPORATION LIMITED

NATIONAL LOAD DESPATCH CENTRE, NEW DELHI



Frequency profile for 03-Feb-2022 (Thursday)



<49.7	<49.90	<49.97	49.7-49.8	49.8-49.9	49.9-50.0	50.0-50.1	50.1-50.2	49.90-50.05	49.7-50.2	49.97-50.03	50.05-50.1	>50	>50.03	>50.05	>50.2	<49.95	49.95-50.05	49.90-49.95
0.00	8.14	28.37	0.63	7.51	34.47	55.88	1.47	75.60	99.95	36.55	14.75	57.40	35.08	16.26	0.05	21.92	61.82	13.78

Average Frequency : 49.997

Frequency Variation Index : 0.0391

Standard Deviation : 0.0624

Mileage: 44.6

FDI: 24.4

Instantaneous Frequency		
Max	50.211	6:02:50
Min	49.737	15:24:30

15 minute Average Frequency		
Max	50.090	6:15:00
Min	49.803	15:30:00

No. of excursions	
above 50.03 Hz	235
below 49.97 Hz	84
above 50.00 Hz	145
below 50.00 Hz	144

Average time freq per excursion remains	
below 49.97	0:04:52
above 50.03	0:02:09

No. of hours freq outside 49.9-50.05 Hz	
	5:51:20

Source : AGRA 10 Sec. (8640 samples)