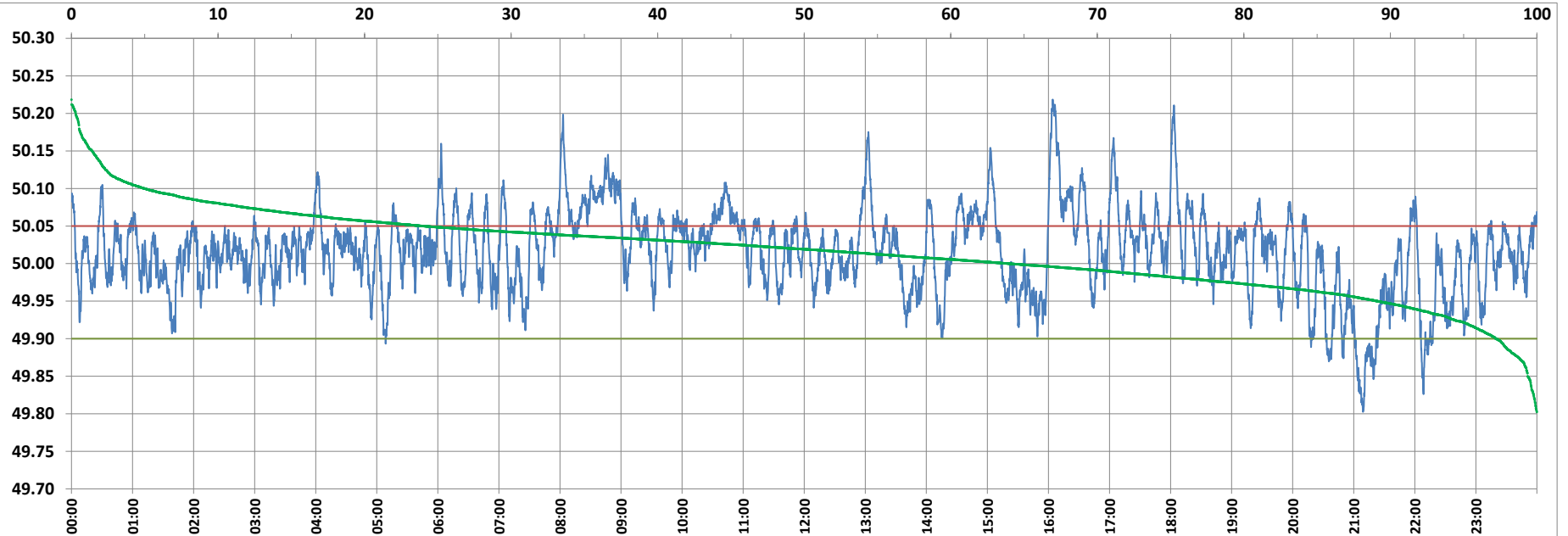


POWER SYSTEM OPERATION CORPORATION LIMITED

NATIONAL LOAD DESPATCH CENTRE, NEW DELHI



Frequency profile for 04-Feb-2022 (Friday)



<49.7	<49.90	<49.97	49.7-49.8	49.8-49.9	49.9-50.0	50.0-50.1	50.1-50.2	49.90-50.05	49.7-50.2	49.97-50.03	50.05-50.1	>50	>50.03	>50.05	>50.2	<49.95	49.95-50.05	49.90-49.95
0.00	2.81	18.46	0.00	2.81	33.21	58.97	4.72	73.14	99.71	40.37	19.04	63.97	41.17	24.05	0.29	10.87	65.08	8.06

Average Frequency : 50.016

Frequency Variation Index : 0.0331

Standard Deviation : 0.0555

Mileage: 44.3

FDI: 26.9

Instantaneous Frequency		
Max	50.218	16:04:10
Min	49.803	21:09:00

15 minute Average Frequency		
Max	50.145	16:15:00
Min	49.857	21:15:00

No. of excursions	
above 50.03 Hz	188
below 49.97 Hz	121
above 50.00 Hz	173
below 50.00 Hz	173

Average time freq per excursion remains	
below 49.97	0:02:12
above 50.03	0:03:09

No. of hours freq outside 49.9-50.05 Hz	
	6:26:50

Source : AGRA 10 Sec. (8640 samples)