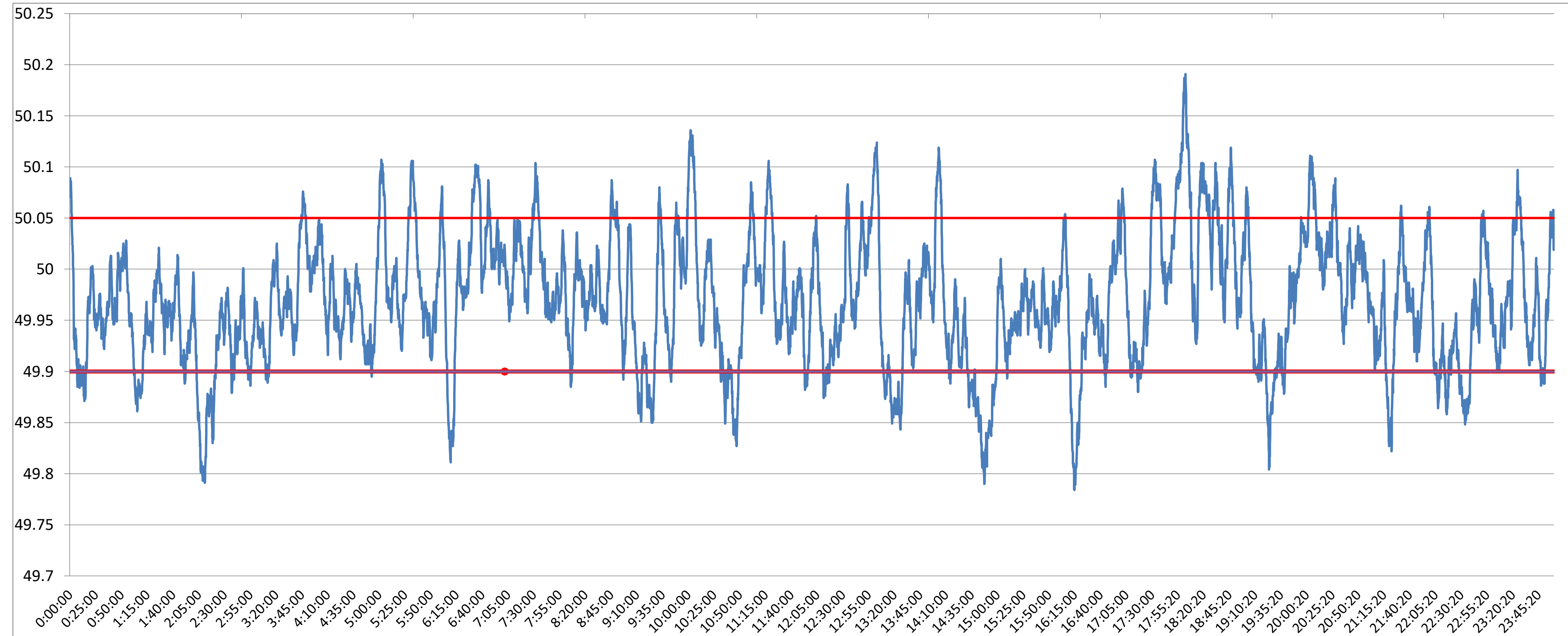




POWER SYSTEM OPERATION CORPORATION LIMITED
NATIONAL LOAD DESPATCH CENTRE NEW DELHI

400KV KALWA:Frequency

National Grid Frequency Profile for 05-May-17



<49.2	<49.7	<49.90	<49.97	49.7-49.8	49.8-49.9	49.9-50.0	50.0-50.1	50.1-50.2	49.90-50.05	49.7-50.2	49.97-50.03	50.05-50.1	>50	>50.03	>50.05	>50.2
0	0.00	13.40	52.64	0.28	13.13	57.07	27.69	1.84	76.01	100.00	30.96	9.17	28.62	16.40	10.59	0.00

Average Frequency		49.97	Frequency Variation Index :		0.050	Standard Deviation :		0.063
Instantaneous Frequency			15 minute average Frequency			No. of excursion above 50.03 Hz		62
Max	50.19	18:02:50	Max	50.063	18:30:00	No. of excursion below 49.97 Hz		118
Min	49.78	16:14:40	Min	49.848	15:00:00	No. of excursion above 50.00 Hz		93
Average time freq remains below 49.97 per excursion		0:06:25	Average time frequency remains above 50.03 per excursion		0:03:49	No. of excursion below 50.00 Hz		90