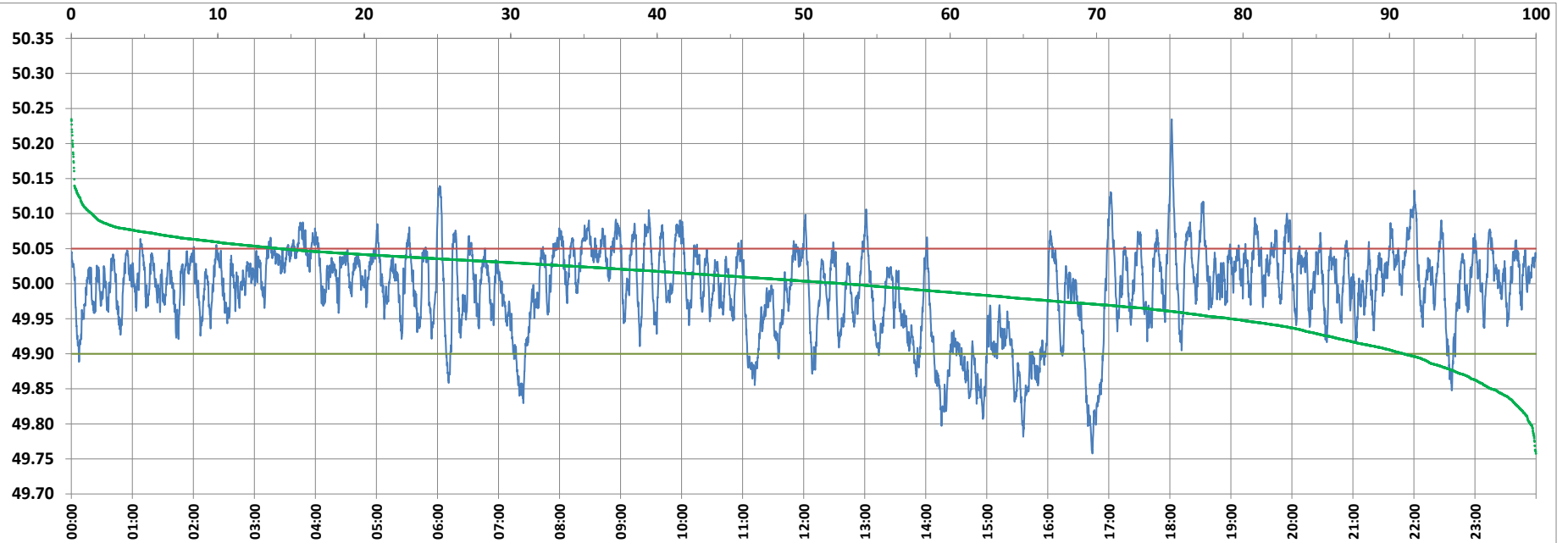


POWER SYSTEM OPERATION CORPORATION LIMITED

NATIONAL LOAD DESPATCH CENTRE, NEW DELHI



Frequency profile for 07-Mar-2022 (Monday)



<49.7	<49.90	<49.97	49.7-49.8	49.8-49.9	49.9-50.0	50.0-50.1	50.1-50.2	49.90-50.05	49.7-50.2	49.97-50.03	50.05-50.1	>50	>50.03	>50.05	>50.2	<49.95	49.95-50.05	49.90-49.95
0.00	9.03	29.71	0.39	8.63	38.32	51.26	1.30	76.78	99.91	40.32	12.80	52.65	29.97	14.19	0.09	20.88	64.93	11.85

Average Frequency : 49.993

Frequency Variation Index : 0.0383

Standard Deviation : 0.0615

Mileage: 44.9

FDI: 23.2

Instantaneous Frequency

Max	50.235	18:01:50
Min	49.758	16:43:50

15 minute Average Frequency

Max	50.057	4:00:00
Min	49.852	15:45:00

No. of excursions

above 50.03 Hz	174
below 49.97 Hz	130
above 50.00 Hz	162
below 50.00 Hz	161

Average time freq per excursion remains

below 49.97	0:03:17
above 50.03	0:02:29

No. of hours freq outside 49.9-50.05 Hz

5:34:20

Source : AGRA 10 Sec. (8640 samples)