

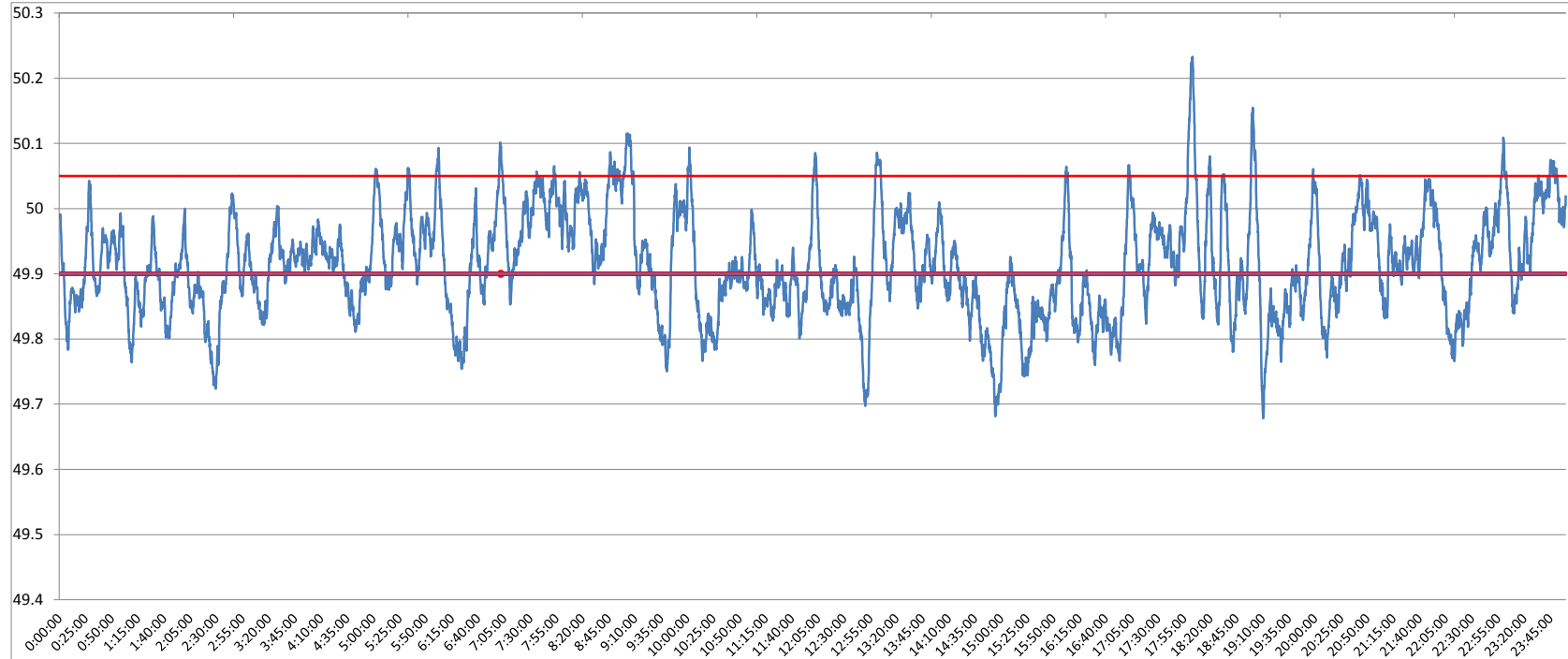


**POWER SYSTEM OPERATION CORPORATION LIMITED**  
NATIONAL LOAD DESPATCH CENTRE NEW DELHI

NTPC-VINDHYACHAL:Frequency

National Grid Frequency Profile for

08-Sep-15



<49.2	<49.7	<49.90	<49.97	49.7-49.8	49.8-49.9	49.9-50.0	50.0-50.1	50.1-50.2	49.90-50.05	49.7-50.2	49.97-50.03	50.05-50.1	>50	>50.03	>50.05	>50.2
0	0.17	45.14	75.49	7.04	37.93	39.18	14.77	0.76	50.22	99.68	15.69	3.74	15.65	8.82	4.64	0.15

<b>Average Frequency</b>		<b>49.91</b>	<b>Frequency Variation Index :</b>		<b>0.139</b>	<b>Standard Deviation :</b>		<b>0.081</b>
<b>Instantaneous Frequency</b>			<b>15 minute average Frequency</b>			<b>No. of excursion above 50.03 Hz</b>		<b>52</b>
<b>Max</b>	<b>50.23</b>	<b>18:03:00</b>	<b>Max</b>	<b>50.049</b>	<b>9:00:00</b>	<b>No. of excursion below 49.97 Hz</b>		<b>73</b>
<b>Min</b>	<b>49.68</b>	<b>19:10:40</b>	<b>Min</b>	<b>49.750</b>	<b>15:00:00</b>	<b>No. of excursion above 50.00 Hz</b>		<b>57</b>
<b>Average time freq remains below 49.97 per excursion</b>			<b>0:14:53</b>	<b>Average time frequency remains above 50.03 per excursion</b>				<b>0:02:27</b>
						<b>No. of excursion above 50.00 Hz</b>		<b>57</b>