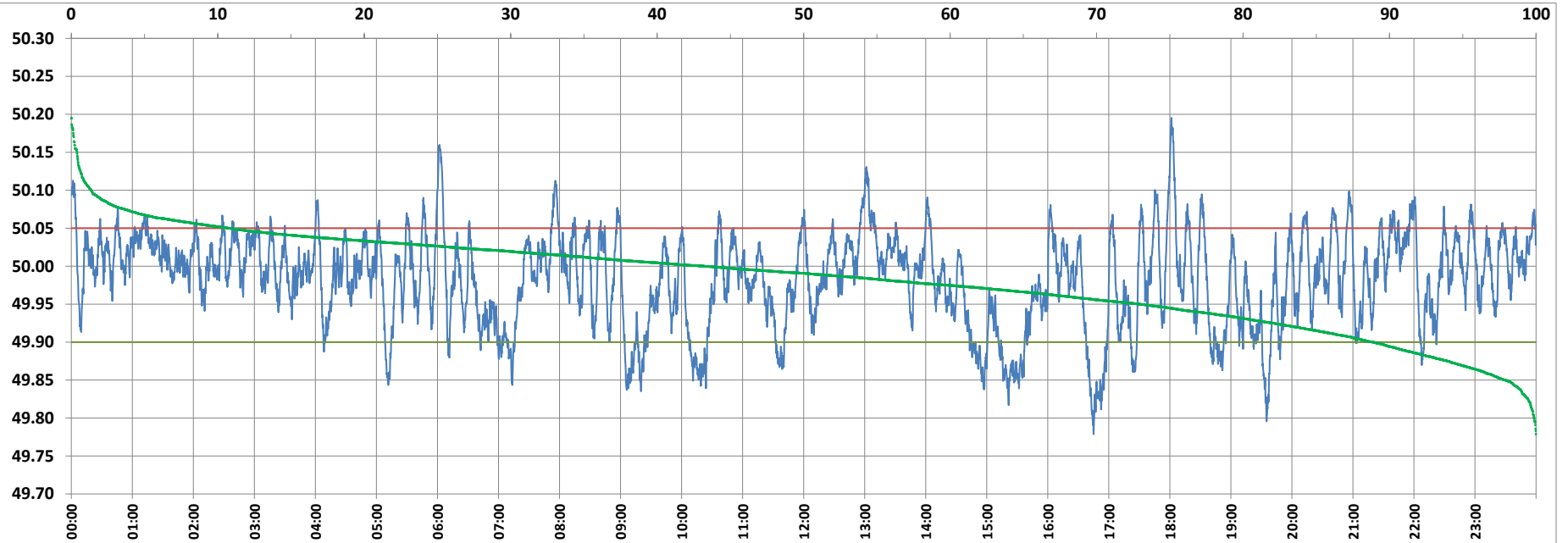


POWER SYSTEM OPERATION CORPORATION LIMITED

NATIONAL LOAD DESPATCH CENTRE, NEW DELHI



Frequency profile for 10-Mar-2022 (Thursday)



<49.7	<49.90	<49.97	49.7-49.8	49.8-49.9	49.9-50.0	50.0-50.1	50.1-50.2	49.90-50.05	49.7-50.2	49.97-50.03	50.05-50.1	>50	>50.03	>50.05	>50.2	<49.95	49.95-50.05	49.90-49.95
0.00	11.13	37.21	0.14	11.00	45.68	41.82	1.37	78.14	100.00	40.38	9.36	43.18	22.41	10.73	0.00	27.09	62.18	15.96

Average Frequency : 49.983

Frequency Variation Index : 0.0399

Standard Deviation : 0.0607

Mileage: 44.4

FDI: 21.9

Instantaneous Frequency

Max	50.195	18:01:30
Min	49.779	16:45:00

15 minute Average Frequency

Max	50.063	13:15:00
Min	49.851	17:00:00

No. of excursions

above 50.03 Hz	159
below 49.97 Hz	127
above 50.00 Hz	176
below 50.00 Hz	175

Average time freq per excursion remains

below 49.97	0:04:13
above 50.03	0:02:02

No. of hours freq outside 49.9-50.05 Hz

5:14:50

Source : BHADRAWATHI 10 Sec. (8640 samples)