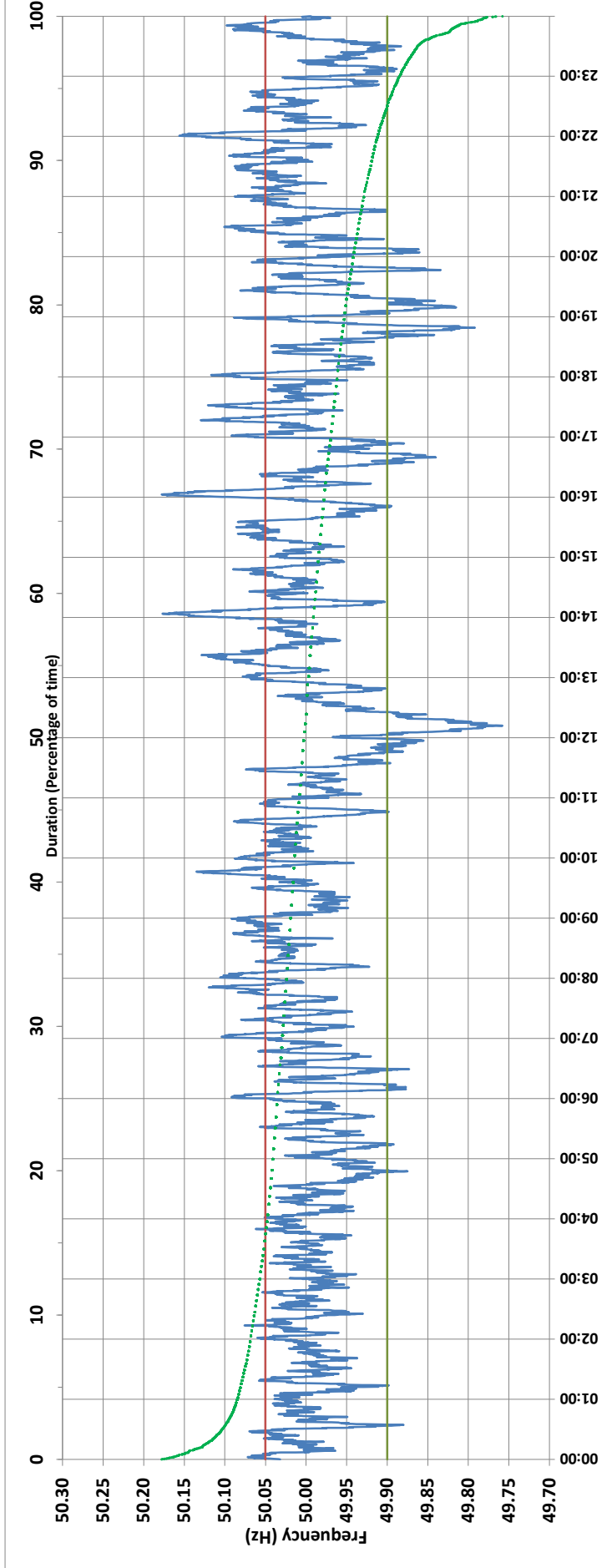


POWER SYSTEM OPERATION CORPORATION LIMITED

NATIONAL LOAD DESPATCH CENTRE, NEW DELHI



Frequency profile for 12-Jan-2021 (Tuesday)



<49.7	<49.90	<49.97	49.7-49.8	49.8-49.9	49.9-50.0	50.0-50.1	50.1-50.2	49.90-50.05	49.7-50.2	49.97-50.03	50.05-50.1	>50	>50.03	>50.05	>50.2	<49.95	49.95-50.05	49.90-49.95
0.00	6.00	28.78	0.44	5.56	41.05	50.53	2.42	78.38	100.00	42.69	13.74	51.63	28.53	15.63	0.00	19.22	65.15	13.23

Average Frequency : 49.997 Frequency Variation Index : 0.0343 Standard Deviation : 0.0586 Mileage: 50.1 FDI: 21.6

Instantaneous Frequency	
Max	50.178 16:02:40
Min	49.758 12:12:00

15 minute Average Frequency	
Max	50.078 13:30:00
Min	49.843 12:15:00

No. of excursions	
above 50.03 Hz	145
below 49.97 Hz	116
above 50.00 Hz	130
below 50.00 Hz	121

Average time freq per excursion remains	
below 49.97	0:03:34
above 50.03	0:02:50

No. of hours freq outside	
49.9-50.05 Hz	5:11:20

Source : BONGAIGON:Frequency 10 Sec. (8640 samples)