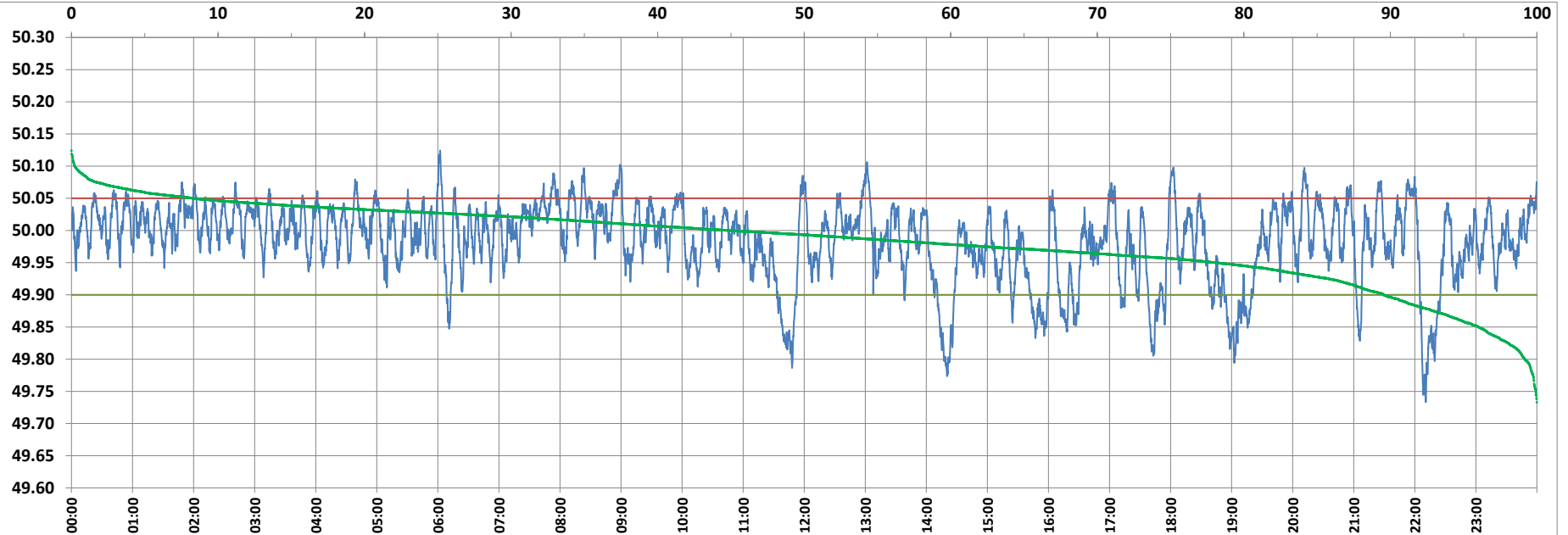


POWER SYSTEM OPERATION CORPORATION LIMITED

NATIONAL LOAD DESPATCH CENTRE, NEW DELHI



Frequency profile for 12-Mar-2022 (Saturday)



<49.7	<49.90	<49.97	49.7-49.8	49.8-49.9	49.9-50.0	50.0-50.1	50.1-50.2	49.90-50.05	49.7-50.2	49.97-50.03	50.05-50.1	>50	>50.03	>50.05	>50.2	<49.95	49.95-50.05	49.90-49.95
0.00	10.43	33.90	0.81	9.62	44.63	44.72	0.22	81.25	100.00	43.76	8.10	44.94	22.34	8.32	0.00	21.90	69.78	11.47

Average Frequency : 49.983

Frequency Variation Index : 0.0384

Standard Deviation : 0.0597

Mileage: 44.9

FDI: 18.8

Instantaneous Frequency		
Max	50.124	6:02:10
Min	49.733	22:10:40

15 minute Average Frequency		
Max	50.048	8:00:00
Min	49.836	14:30:00

No. of excursions	
above 50.03 Hz	187
below 49.97 Hz	167
above 50.00 Hz	179
below 50.00 Hz	178

Average time freq per excursion remains	
below 49.97	0:02:55
above 50.03	0:01:43

No. of hours freq outside 49.9-50.05 Hz	
	4:30:00

Source : AGRA 10 Sec. (8640 samples)