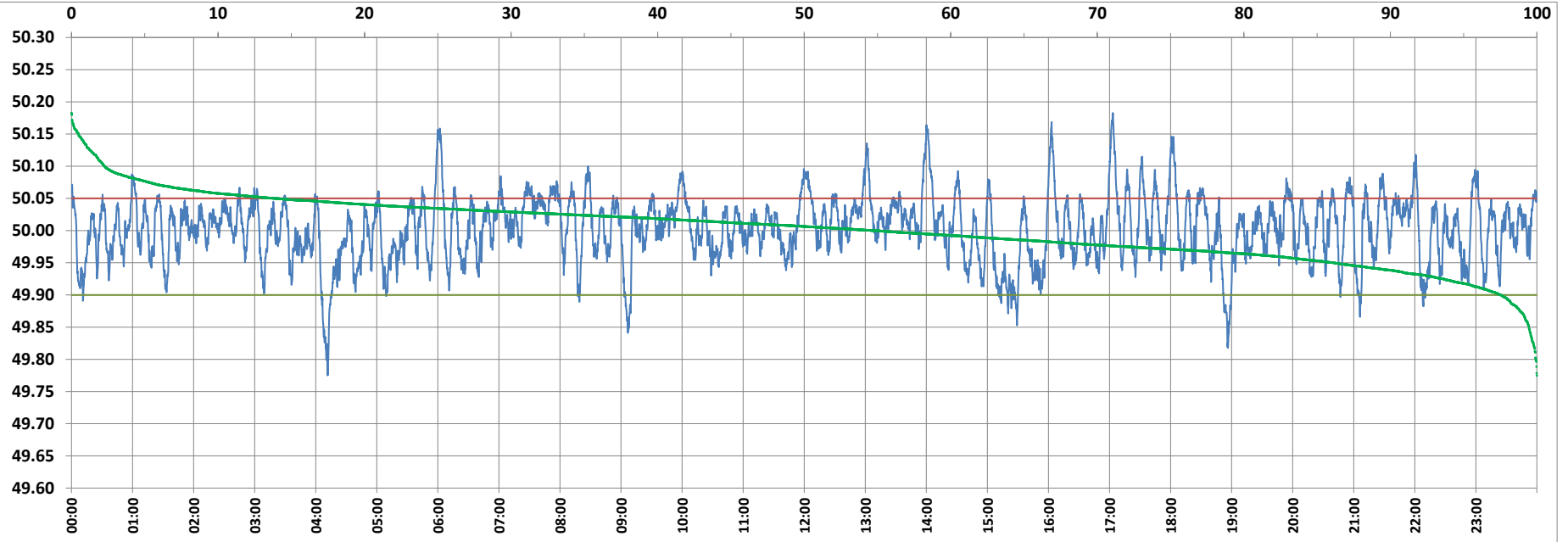


POWER SYSTEM OPERATION CORPORATION LIMITED

NATIONAL LOAD DESPATCH CENTRE, NEW DELHI



Frequency profile for 13-Mar-2022 (Sunday)



<49.7	<49.90	<49.97	49.7-49.8	49.8-49.9	49.9-50.0	50.0-50.1	50.1-50.2	49.90-50.05	49.7-50.2	49.97-50.03	50.05-50.1	>50	>50.03	>50.05	>50.2	<49.95	49.95-50.05	49.90-49.95
0.00	2.45	24.05	0.07	2.38	42.73	52.56	2.26	83.61	100.00	46.86	11.68	54.81	29.09	13.94	0.00	13.81	72.26	11.35

Average Frequency : 50.002

Frequency Variation Index : 0.0249

Standard Deviation : 0.0500

Mileage: 45.6

FDI: 16.4

Instantaneous Frequency		
Max	50.183	17:03:00
Min	49.775	4:11:40

15 minute Average Frequency		
Max	50.059	17:15:00
Min	49.903	4:15:00

No. of excursions	
above 50.03 Hz	188
below 49.97 Hz	167
above 50.00 Hz	189
below 50.00 Hz	188

Average time freq per excursion remains	
below 49.97	0:02:04
above 50.03	0:02:14

No. of hours freq outside 49.9-50.05 Hz	
	3:56:00

Source : BARH 10 Sec. (8640 samples)