

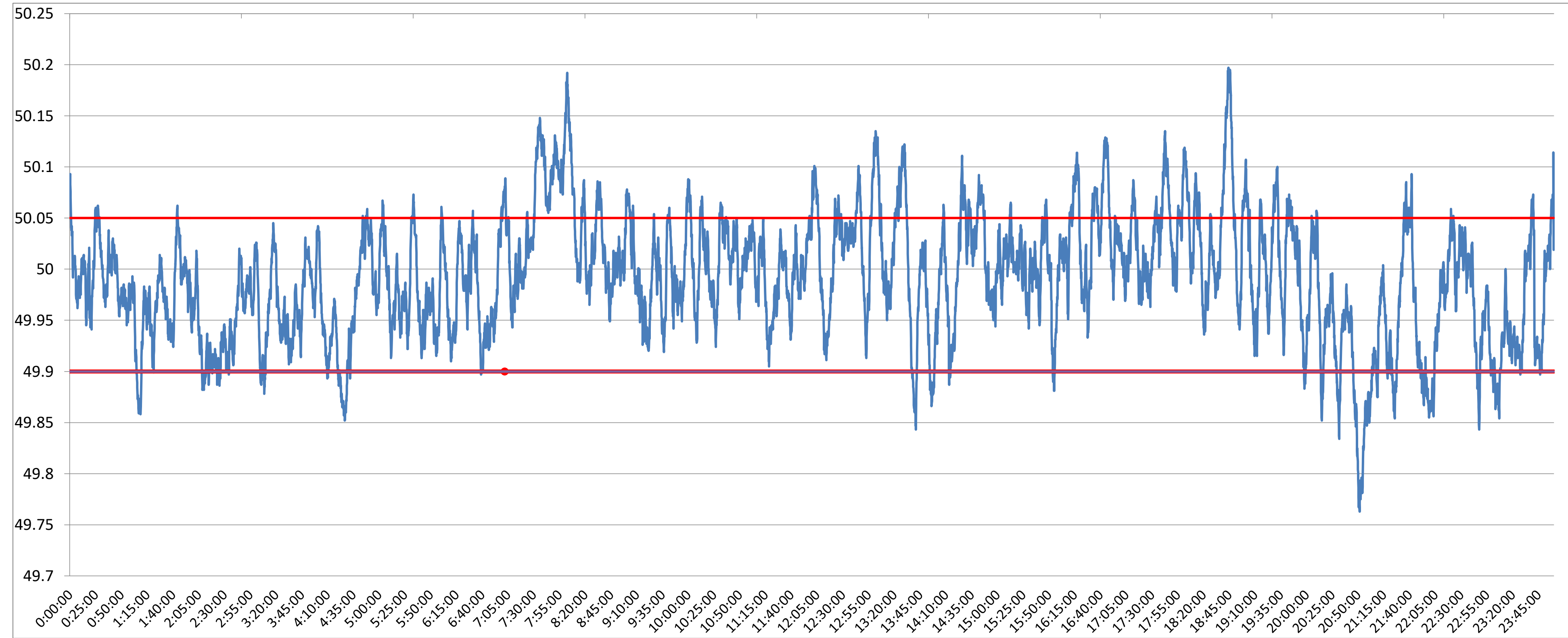


**POWER SYSTEM OPERATION CORPORATION LIMITED**  
NATIONAL LOAD DESPATCH CENTRE NEW DELHI

BAWANA:Frequency

National Grid Frequency Profile for

14-Jun-17



<49.2	<49.7	<49.90	<49.97	49.7-49.8	49.8-49.9	49.9-50.0	50.0-50.1	50.1-50.2	49.90-50.05	49.7-50.2	49.97-50.03	50.05-50.1	>50	>50.03	>50.05	>50.2
0	0.00	6.37	34.71	0.31	6.05	48.32	41.70	3.61	78.19	100.00	40.23	12.44	43.97	25.06	15.44	0.00

<b>Average Frequency</b>		<b>49.99</b>	<b>Frequency Variation Index :</b>		<b>0.037</b>	<b>Standard Deviation :</b>		<b>0.060</b>
<b>Instantaneous Frequency</b>			<b>15 minute average Frequency</b>			<b>No. of excursion above 50.03 Hz</b>		<b>122</b>
<b>Max</b>	<b>50.2</b>	<b>18:44:10</b>	<b>Max</b>	<b>50.101</b>	<b>7:45:00</b>	<b>No. of excursion below 49.97 Hz</b>		<b>133</b>
<b>Min</b>	<b>49.76</b>	<b>20:51:30</b>	<b>Min</b>	<b>49.833</b>	<b>21:00:00</b>	<b>No. of excursion above 50.00 Hz</b>		<b>117</b>
<b>No. of excursion below 50.00 Hz</b>						<b>121</b>		
<b>Average time freq remains below 49.97 per excursion</b>		<b>0:03:45</b>	<b>Average time frequency remains above 50.03 per excursion</b>		<b>0:02:57</b>			