

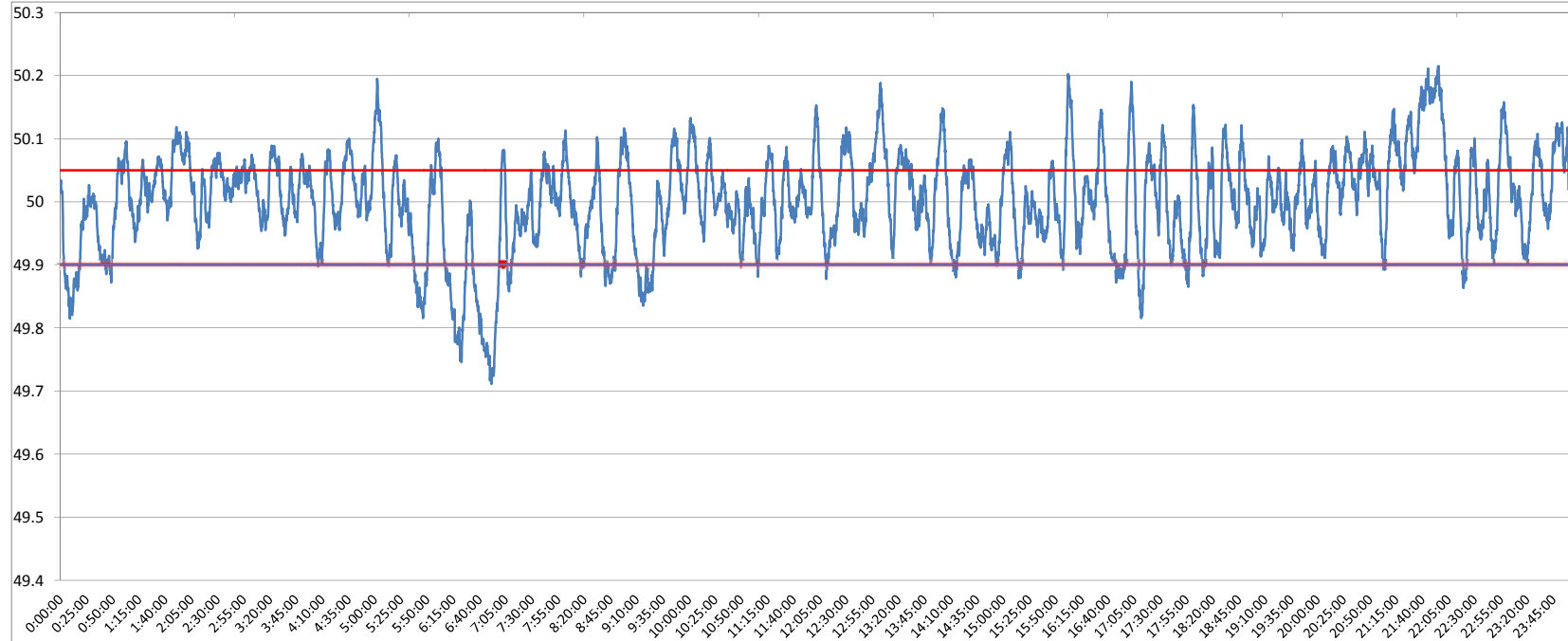


**POWER SYSTEM OPERATION CORPORATION LIMITED**  
NATIONAL LOAD DESPATCH CENTRE NEW DELHI

DADRI:Frequency

National Grid Frequency Profile for

17-Nov-15



<49.2	<49.7	<49.90	<49.97	49.7-49.8	49.8-49.9	49.9-50.0	50.0-50.1	50.1-50.2	49.90-50.05	49.7-50.2	49.97-50.03	50.05-50.1	>50	>50.03	>50.05	>50.2
0	0.00	9.79	31.57	1.48	8.31	38.39	43.99	7.67	62.55	99.85	31.08	19.92	51.77	37.35	27.66	0.15

<b>Average Frequency</b>		<b>50.00</b>	<b>Frequency Variation Index :</b>		<b>0.061</b>	<b>Standard Deviation :</b>		<b>0.078</b>
<b>Instantaneous Frequency</b>			<b>15 minute average Frequency</b>			<b>No. of excursion above 50.03 Hz</b>		<b>120</b>
<b>Max</b>	<b>50.21</b>	<b>21:55:40</b>	<b>Max</b>	<b>50.176</b>	<b>22:00:00</b>	<b>No. of excursion below 49.97 Hz</b>		<b>104</b>
<b>Min</b>	<b>49.71</b>	<b>6:51:40</b>	<b>Min</b>	<b>49.780</b>	<b>7:00:00</b>	<b>No. of excursion above 50.00 Hz</b>		<b>135</b>
<b>Average time freq remains below 49.97 per excursion</b>		<b>0:04:22</b>	<b>Average time frequency remains above 50.03 per excursion</b>		<b>0:04:29</b>	<b>No. of excursion below 50.00 Hz</b>		<b>134</b>