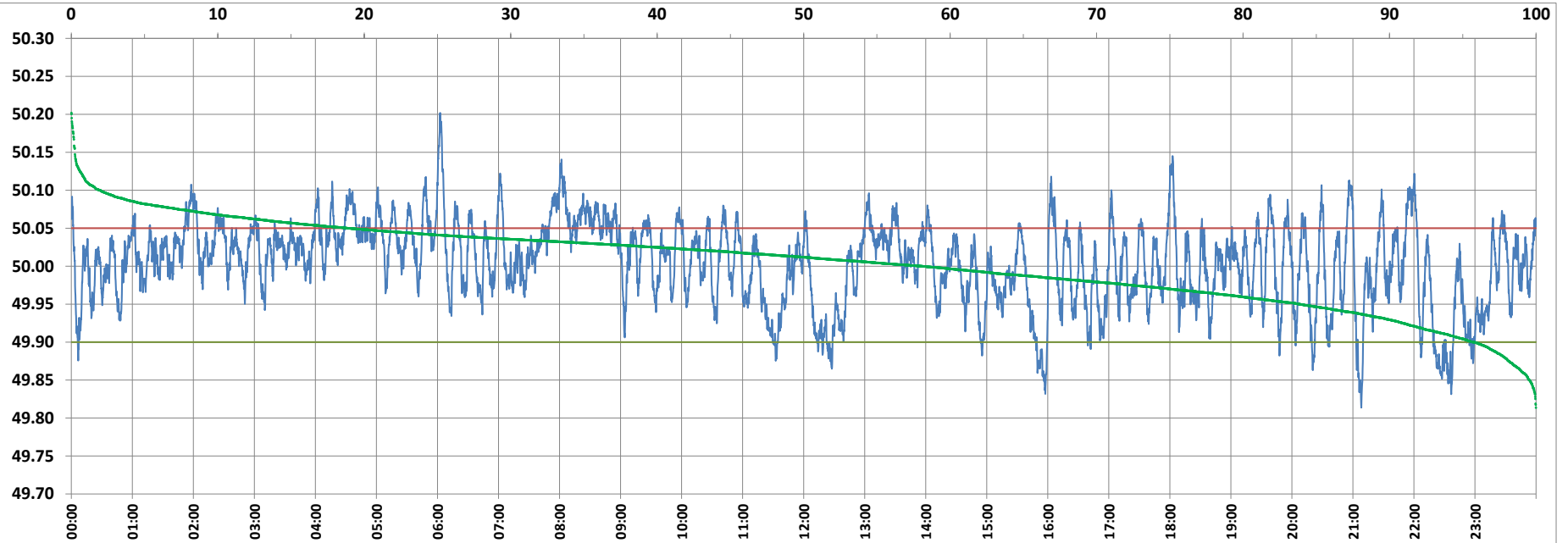


POWER SYSTEM OPERATION CORPORATION LIMITED

NATIONAL LOAD DESPATCH CENTRE, NEW DELHI



Frequency profile for 19-Feb-2022 (Saturday)



<49.7	<49.90	<49.97	49.7-49.8	49.8-49.9	49.9-50.0	50.0-50.1	50.1-50.2	49.90-50.05	49.7-50.2	49.97-50.03	50.05-50.1	>50	>50.03	>50.05	>50.2	<49.95	49.95-50.05	49.90-49.95
0.00	4.27	25.01	0.00	4.27	37.69	56.11	1.91	76.85	99.98	39.64	16.94	58.04	35.35	18.88	0.02	16.16	64.97	11.89

Average Frequency : 50.004

Frequency Variation Index : 0.0296

Standard Deviation : 0.0543

Mileage: 46.2

FDI: 23.1

Instantaneous Frequency

Max	50.202	6:02:30
Min	49.814	21:08:10

15 minute Average Frequency

Max	50.078	8:15:00
Min	49.882	16:00:00

No. of excursions

above 50.03 Hz	196
below 49.97 Hz	126
above 50.00 Hz	159
below 50.00 Hz	158

Average time freq per excursion remains

below 49.97	0:02:52
above 50.03	0:02:36

No. of hours freq outside 49.9-50.05 Hz

5:33:20

Source : AGRA 10 Sec. (8640 samples)