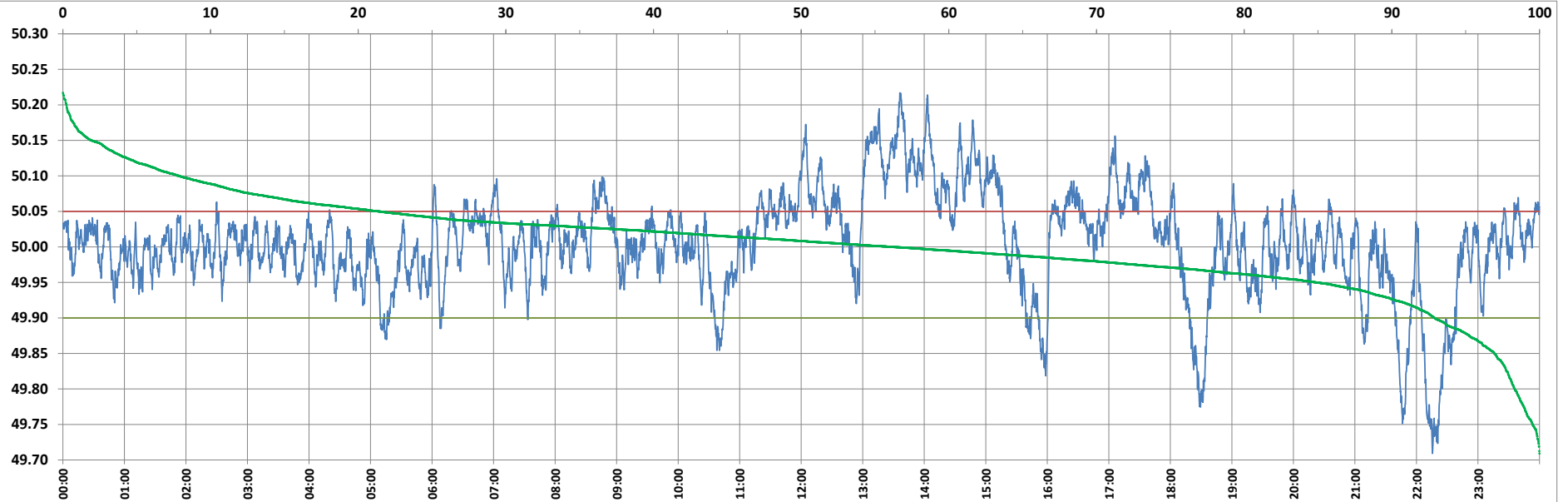


POWER SYSTEM OPERATION CORPORATION LIMITED

NATIONAL LOAD DESPATCH CENTRE, NEW DELHI



Frequency profile for 21-Aug-2022 (Sunday)



<49.7	<49.90	<49.97	49.7-49.8	49.8-49.9	49.9-50.0	50.0-50.1	50.1-50.2	49.90-50.05	49.7-50.2	49.97-50.03	50.05-50.1	>50	>50.03	>50.05	>50.2	<49.95	49.95-50.05	49.90-49.95
0.00	7.09	24.35	1.68	5.42	36.70	48.32	7.64	71.49	99.76	42.47	13.53	56.20	33.18	21.41	0.24	15.06	63.53	7.96

Average Frequency : 50.005

Frequency Variation Index : 0.0498

Standard Deviation : 0.0705

Mileage: 44.5

FDI: 28.5

Instantaneous Frequency		
Max	50.217	13:36:10
Min	49.709	22:15:30

15 minute Average Frequency		
Max	50.157	13:45:00
Min	49.792	22:30:00

No. of excursions	
above 50.03 Hz	168
below 49.97 Hz	127
above 50.00 Hz	173
below 50.00 Hz	172

Average time freq per excursion remains	
below 49.97	0:02:46
above 50.03	0:02:51

No. of hours freq outside 49.9-50.05 Hz	6:50:30
---	---------

Source : AGRA 10 Sec. (8640 samples)